

Get serious about saving fuel.
And have a gas on weekends.



Phasar'84

Phasar is fun. Phasar is flexibility. Phasar is the future.

It has the ride, handling and fuel efficiency of a car. But it's not a car.

It has the people and cargo capacity of a van. But it's not a van.

It has the liveability of a fully-equipped motor home. But it's not just a motor home, either.

It's a Phasar. A whole new category of vehicles. A whole new dimension of driving pleasure. A whole new expression of Itasca's continuing commitment to design and engineering excellence.

Phasar is just 20 feet long. So it doesn't need much room to maneuver.

That means you can cozy Phasar into a parking lot without a second thought. You can even parallel park a Phasar. It's that much like a car.

You can take it to work. Take it shopping. Take it anywhere you want.

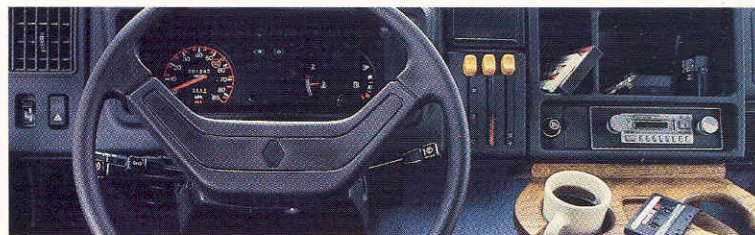
Phasar is unbelievable handling.

Phasar is a front wheel drive vehicle. With an extremely low center of gravity. That means it's agile as a cat. A driver's delight. Equally at home in



Phasar is as much at home in a supermarket parking lot — as it is a home for a weekend of fun.

city traffic — on a winding country road — or speeding you cross-country on an interstate.



Phasar's fully functional cockpit features a highly-styled dashboard.

After test driving Phasar, here's what *MotorHome Magazine* had to say:

"You can't help but be impressed with the vehicle's amazing stability. It is virtually immune to the buffeting of passing trucks, and it corners, even at high speeds, like a sports car."

Even Phasar's braking system is impressive. It actually reads the weight load — and automatically adjusts the braking capacity between front discs and rear drums.

Phasar is fuel efficiency.

The Phasar performs as impressively at the gas station as it does on the highway. In

fact, when the United States Auto Club tested a prototype, it turned in an average of 24.11 miles per gallon over 3,000 miles.*

The prototype was identical to Phasar — except it was not equipped with a sink, range, refrigerator and marine toilet. With that added weight, your mileage could be reduced to 22 MPG — still better than



Get serious about ha

many cars.

Everything about Phasar is designed to wring the last mile out of every gallon of fuel.

Phasar's radical wedge shaped silhouette not only looks great—it slices through headwinds like a knife. And dramatically reduces the drag coefficient.

Weight is kept to a minimum with aircraft-styled components. And our own Thermo-Panel side walls. The Phasar cab and chassis is unitized steel. And it's reinforced with steel transition panels along the sides—up and over the cab.

Power is provided by your choice of standard 2.2 liter diesel or optional turbo diesel.

Radial tires are standard equipment on Phasar. And so is an efficient four-speed transmission.

Options include power-assist steering, cruise control and auto air conditioning.

The Phasar's cockpit is outfitted with pedestal-mounted, reclining bucket seats. There's a European styled dash—with easy to reach controls. And the windshield is expansive—and provides an exceptional view of the road.

With an optional AM/FM

cassette stereo radio—or electronic tuning AM/FM stereo sound system—you've got

everything you need to sail gloriously, and efficiently, into the sunset.

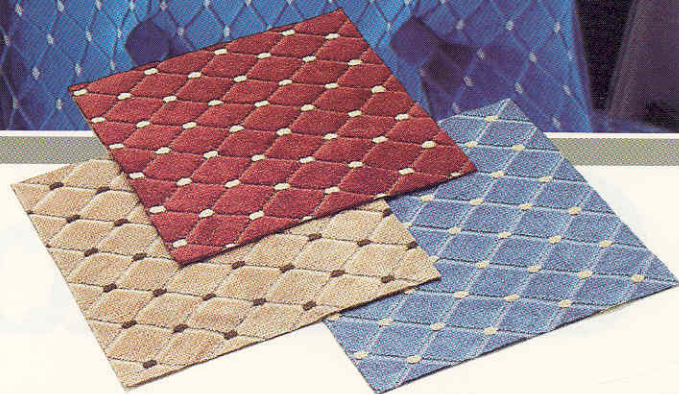


Even without this optional electronic tuning, AM/FM cassette stereo sound system—Phasar is music to your ears.

Phasar's ingenious split level floor plan is lower in the galley, lounge and bathroom—where you stand. And raised in the dinette and cab where you sit.



ving fun.



Everything in its place. With plenty of space for everything. Including you.

Phasar is a fully-equipped motor home. It seats eight. And sleeps four.

And even though Phasar is incredibly compact, it won't cramp your style. It's built life-size. For living. With full-size furnishings. For full-size people.

There's everything you need to set up housekeeping. A galley, dinette, bathroom, beds for four adults. And loads of storage space.

Phasar is your home away from home. It's your portable party room. Or your personal retreat.

Soft, luxurious companion seats by day— become a soft, luxurious bed by night.



**From ceiling to floor,
Phasar is pure function.**

Everywhere you look in Phasar you'll find comfort and convenience.

There's a full six feet of headroom. And Phasar gives you lots to stand up and cheer about.

The dinette table folds away and becomes a double



bed. So do the companion seats.

In the galley, there's a 12-volt refrigerator. A two-

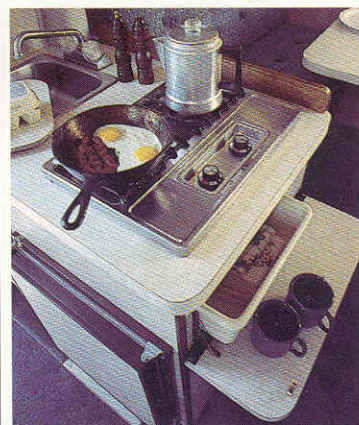
burner range. A stainless steel sink. And a six-gallon water heater.

Counter space is stretched by a clever stove extension. It looks like a drawer. And it is. But open it, and it also becomes the base for additional working space.

There's literally loads of storage capacity. Radius-edged, overhead cabinets. Under-seat

storage. And a spacious wardrobe that doubles as a pantry.

Every square inch in Phasar is engineered for function. Even the plumbing is routed to provide additional shelf space.



What looks like a drawer is also a convenient counter extender.



Get serious. Get a life

Phasar is wall to wall comfort.

More than anything else, Phasar is meant to be enjoyed. It's a place for entertaining. For relaxing. For making the most of your leisure time.

That's why comfort is the essence of Phasar.

The lush carpet is backed by a thick separate foam pad. It not only feels great under foot—it provides extra insulation from road noise. And temperature extremes.

The cushions are dacron wrapped foam—covered in rich, Scotchguarded® upholstery.

And Phasar is a room with a view. There are nine large, tinted windows to take in the sights. Most of them open—and have screens. And



The dinette is a double bed in disguise. Or is it the other way around?

there's a powered ceiling vent for extra ventilation.

When the weather is right for air conditioning, there's an optional automotive roof-

air unit to take you down the road in comfort. Plus an optional 7,100 BTU roof-air for climate control everywhere.

There's a 20,000 BTU furnace. Color-coordinated, vinyl-clad wall surfaces. Standard designer venetian blinds. An LP leak detector. And a 5 lb. fire extinguisher.

In short, there's *everything* in Phasar. Except wasted space.



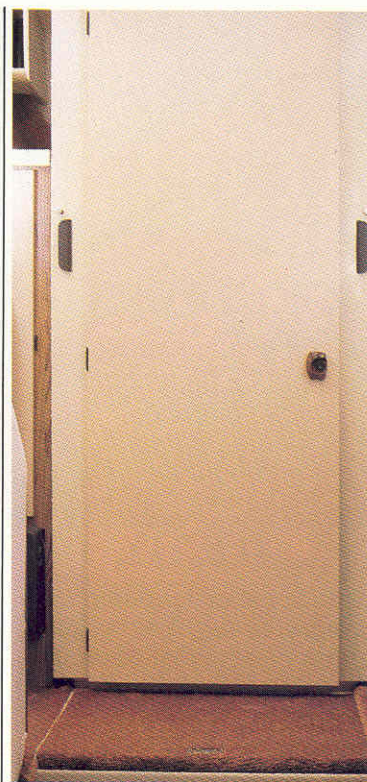
Phasar's crank-out windows are screened so you can let in the breezes—and keep out the insects.

Phasar's bathroom gives you "expansion space."

Phasar's bathroom is a marvelous example of Itasca design expertise.

When you want a bathroom simply open the door—and slide the walls out to double the size of the room. When you're finished, the walls tuck out of your way.

If you'd like, there's even an optional shower.



Phasar's ingenious bathroom shrinks to half size when it's not in use.

Open the door—pull out the walls—and, presto, a full size bathroom.



-size interior.

We don't
simply
assemble
or convert
vehicles.

We
manufacture
them.

We're in the motor home business to stay. And nothing speaks more to that commitment than Phasar. The absolute state-of-the-art. The most advanced and fuel efficient multi-purpose vehicle in America.

Best of all, Phasar isn't simply assembled or converted by Itasca—it's designed and built by Itasca. In fact, most of the components that go into a Phasar come out of our ultra-modern manufacturing facility in Forest City, Iowa.

Everything from doors to drivers seats. From holding tanks to window frames. All designed and built to the rigid standards that Itasca has come to stand for.

We're pioneering the application of computer aided design to motor homes.

To this day, nobody even comes close to the technological sophistication we apply to the design of Itasca motor homes.

We use state-of-the-art CAD systems (computer aided design) to continually probe for more effective use of space and materials. To analyze stress

and weight distribution. In short, to design for you the safest, most efficient, most advanced motor homes on wheels.

Computers offer an extra measure of manufacturing precision, too.

We apply the same sophistication to manufacturing that we apply to design.

For example, in addition



From design to manufacture, Phasar is a product of advanced computer technology.



to four 1,000 foot assembly lines, our production facility includes a computer controlled punch press.

And an automated welding system that's accurate to within six hundredths of an inch!

The result is remarkable precision and consistency. Ultimately arriving to you in the form of Phasar's exceptional fit and finish.



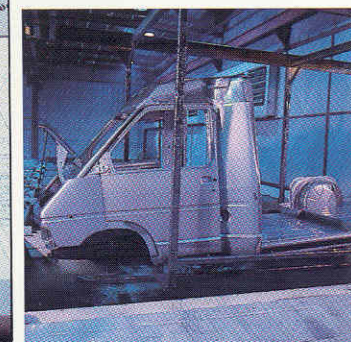
This automated welding system delivers remarkable accuracy. Time after time.

The toughest test we have to pass is our own.

Testing, like every other aspect of Phasar construction, is state-of-the-art.

A special heat chamber subjects molded plastic parts to temperature extremes from -100 to +400 degrees.

Phasar's body is entirely submerged in a series of 22,000 gallon dip tanks. It's part of a coating system that's among the most advanced in the world.



Get serious. Get the

A unique system sprays gravel at our paint finishes with 70 lbs. of air pressure to check chip resistance.

Another device is used to randomly test the lamination strength of our own Thermo-Panel sidewalls.

We routinely run vibration tests. Salt water spray tests. Weight distribution tests.

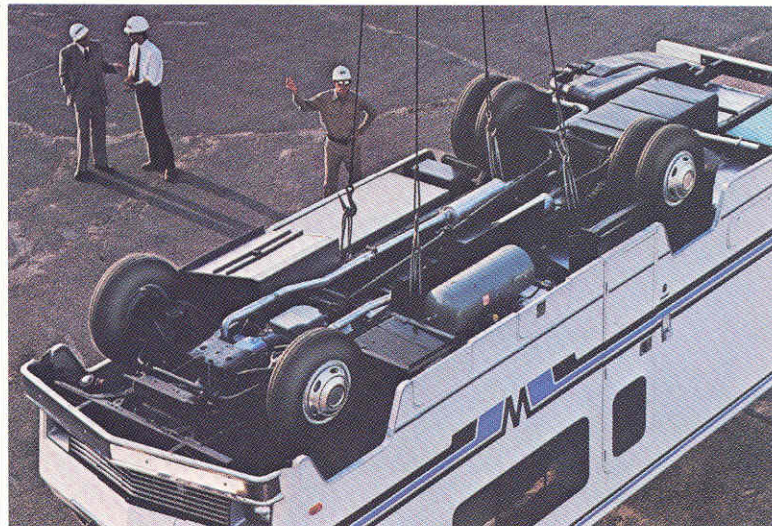
We even test the brand name appliances that are installed in Phasar to insure our standards are maintained.

Then, of course, there's our famous drop test. A free fall onto pavement. Upside

down. To make certain nothing buckles. Or becomes unbolted or unsafe.

And to make sure our testing stands the test, every Itasca built is manufactured under the watchful eyes of 30 quality control specialists. Along with volunteer Quality Circles who are always looking for ways to build Phasar even better.

Our drop test should be an industry standard. Instead, it's an industry exclusive.



20 Feet from end to end — so it doesn't take much room to maneuver.

Thermo-Panel sidewalls for insulation, strength and noise reduction.

Unique, optional, overhead automotive air conditioning system for cab and coach comfort while traveling.

Aerodynamic front end slices through headwinds and contributes to Phasar's superb handling.

Cruise control available.

Itasca

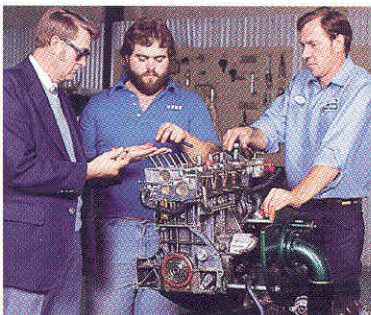
The driveshaft is eliminated by front wheel drive. That makes for a lower center of gravity. And Phasar's dramatic low silhouette.

Unitized steel body with steel transition panels along the sides — and up over the cab.

Unique split level floor plan. Lower where you stand. And raised where you sit.

22 gallon fresh water capacity with 6 gallon water heater.

28 lb. LP gas capacity with standard leak detector.



Dealer service personnel are required to complete an extensive factory training program at Winnebago Industries' fully staffed and equipped

Fully tinted windows.

Exclusive, expandable bathroom with shower, optional.

Dual battery system with 30 amp converter charger.

Optional turbo-diesel for performance and fuel efficiency.

All radial tires including spare.

Front wheel drive for remarkable traction and agility.



state-of-the-art.

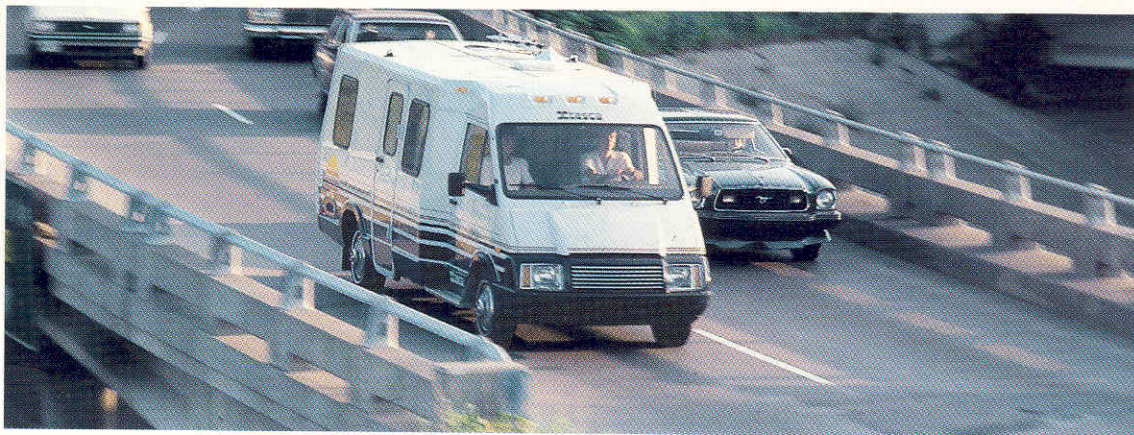
**We put more into Phasar—
so you get more out of it.**

Phasar meets or exceeds all State and Federal motor home safety codes written. But we don't stop there.

The roof is carefully curved around the sidewalls for a tight seal. So it won't leak.

The fuel lines have rubber sleeves wherever they pass through the frame. So they won't rub.

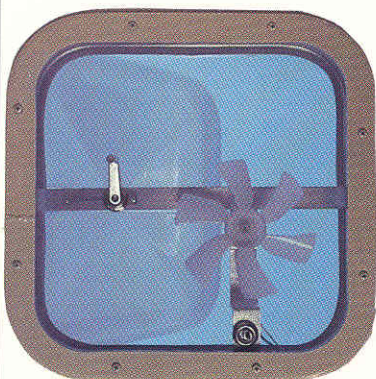
The sidewalls and roof are supported by aluminum frames. The rear floor and front cab are all steel. And the



And we've organized the storage areas and holding tanks for weight distribution. So that empty or full — your Phasar stays evenly balanced. From front to back. And from side to side.

You guessed it. The list goes on and on. Because we know the more effort we put into Phasar — the more fun you'll get out of it.

Like everything else in Phasar, the cupholder and ashtray are right where you want them.



Phasar's roof vent is coupled with a powerful fan for improved ventilation.

driver's compartment is shielded by a steel firewall.

Phasar packs plenty of payload. So there's room for all the gear you need. Even some you don't need.

Lighted, recessed beverage holder and ashtray.



Find your place in the sun — and stay cool and comfortable with Phasar's optional automotive roof air conditioning unit.



Finally, let's talk about real peace of mind.

Peace of mind is a very important part of Phasar's good life package.

It comes in the form of an unmatched service network that stretches from coast to coast.

In the form of a solid 12 month/12,000 mile limited warranty. Or, if you'd like, our optional 5 year/50,000 mile Traveler's Protection Plan.**

Sure, peace of mind comes in the form of Phasar's universal appeal — and promise of resale value, too.

But, most important of all, peace of mind comes in the form of a six letter word that means uncompromised quality, comfort and value. That word is Itasca.

Phasar's radius-edged cabinets not only look good — they're safer, too.



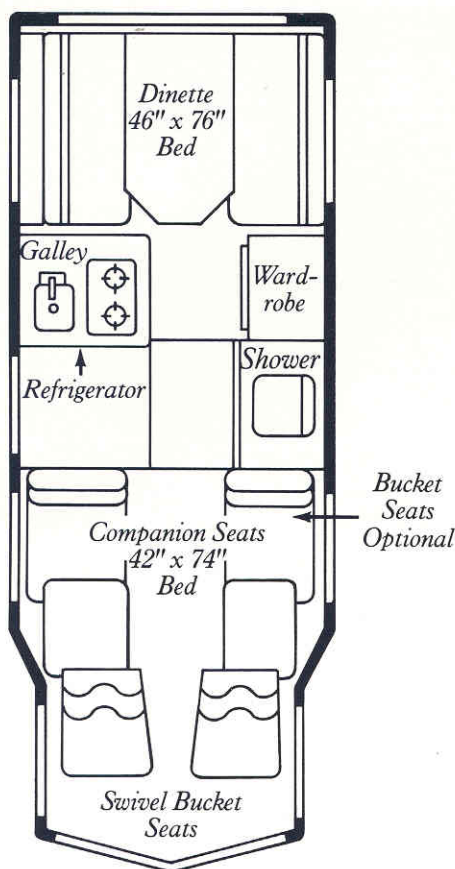
Phasar's monitor panel includes a digital alarm clock and an LP gas leak detector. And under the panel is a thermostat that puts you in command of a 20,000 BTU furnace.



Itasca has designed function into every conceivable corner of Phasar. Even under the companion seats.



most for your money.



STANDARD FEATURES

Reclining front bucket seats with armrests
 Companion lounge seats with armrests
 Convertible dinette/double bed
 12-Volt refrigerator
 2-Burner range
 Stainless steel sink
 6-Gallon electric water heater
 20,000-BTU furnace
 Full tinted windows
 Powered ceiling vent
 5 BC fire extinguisher
 Deluxe monitor panel
 Interior assist strap
 Ceiling lights
 Carpeting
 Designer venetian blinds w/side curtains and valances
 Fold-up lavatory
 Medicine cabinet
 Marine toilet
 Wardrobe
 High output alternator
 Dual battery system
 32-Amp. solid state convertor/charger
 LP leak detector
 Rear mud flaps
 Lockable fuel fill cap
 Left, right and interior rear view mirrors
 Wheel covers
 Sewer hose and compartment
 110 Volt exterior outlet
 4-Speed manual transmission
 Bosch fuel injectors & injection pump
 Emergency start solenoid
 Radial tires
 Front wheel drive
 Seatbelts
 Sunvisors
 Spare tire, carrier & cover
 Tire tools
 Demand water system
 Electric water pump

OPTIONAL EQUIPMENT

2.0 liter turbo-charged diesel engine
 Power-assist steering
 Automotive air conditioning
 7100 BTU roof air conditioning
 Cruise control
 AM/FM/Cassette stereo
 Electronic tuning AM/FM/cassette stereo
 Shower package
 Running boards
 Wire wheel covers
 Beverage tray
 5 Year/50,000 mile Traveler's Protection Plan**
 Designer venetian blinds
 Companion bucket seats
 Woven window shades
 Trailer towing package
 TV antenna

SPECIFICATIONS

Sleeping capacity	4
Engine	2 liter diesel
Length	19'8"
Exterior height	84.5"
Interior height-normal	67.6"
Interior height-maximum	72.4"
Interior width	80.5"
GVWR (lbs.)	5830
Wheelbase	145"
Fuel capacity (gal.)	15.9
Fresh water capacity (gal. w/heater)	22
Holding tank capacity (gal.)	13
LP gas (lbs.)	28
Maximum hitch load	100 lb. tongue, 1,000 lb. load

Itasca's continuing program of product improvement makes specifications, equipment, model availability and prices subject to change without notice. Some items shown may be extra cost options.

*Interstate highway mileage. Your actual fuel economy will vary depending on speed, weather and load conditions. Equipment, engine specifications, optional equipment and design may vary in subsequent production models and this may affect fuel economy.

**Not available in Canada.

© 1983 Winnebago Industries, Inc., Forest City, Iowa 50436. Printed in U.S.A.

Get serious. Get Itasca.

