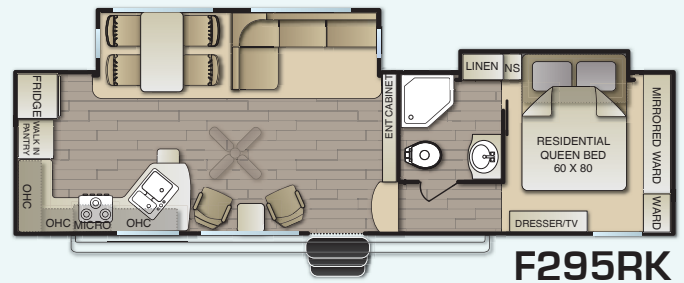
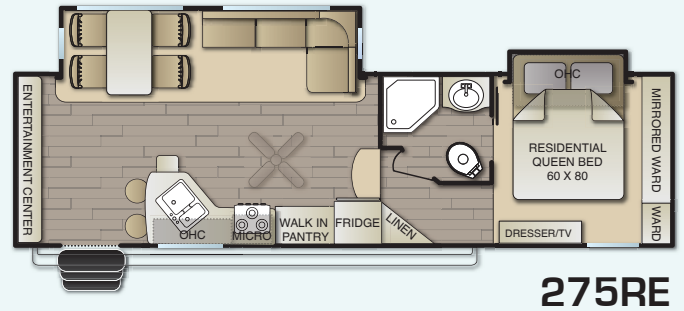
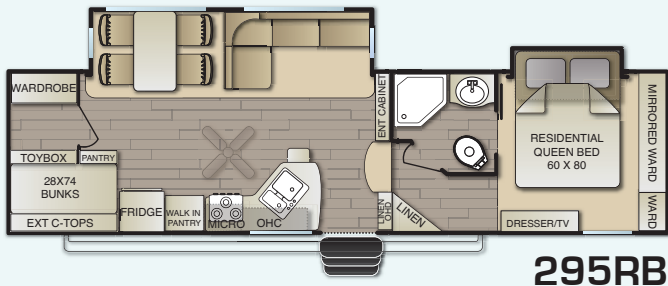
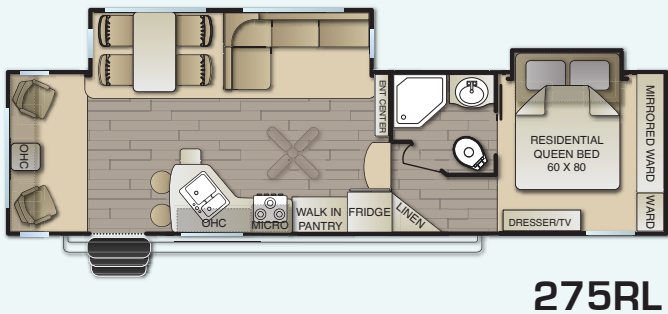
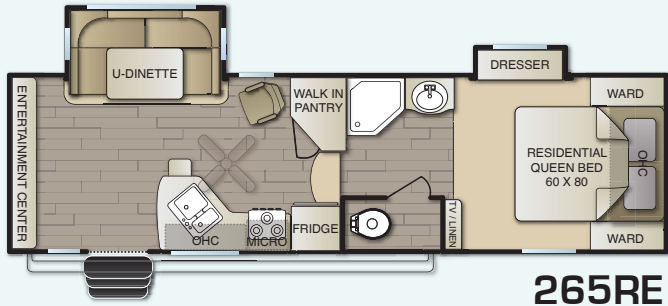




## LUXURY FIFTH WHEELS



MODEL	265RE	275RL	275RE	295RK	295RB
EXT LENGTH	29'-10"	34'-4"	32'-4"	35'-11"	36'-11"
EXT WIDTH	96"	96"	96"	96"	96"
INT. HEIGHT	8'-4"	8'-4"	8'-4"	8'-4"	8'-4"
EXT. HEIGHT	12'-6"	12'-6"	12'-6"	12'-6"	12'-6"
GVWR	12,000	12,000	12,000	12,000	12,000
UVW	8,340	9,340	8,980	9,450	TBD
PAYLOAD	3,660	2,660	3,020	2,550	TBD
FRESH WATER	83 GAL	83 GAL	83 GAL	83 GAL	83 GAL
GRAY WATER	50 GAL	50 GAL	50 GAL	50 GAL	50 GAL
BLACK WATER	50 GAL	50 GAL	50 GAL	50 GAL	50 GAL

NOTES: PCW reserves the right to change or discontinue at any time, without notice, prices, colors, materials, equipment, accessories, specifications, models, and packages, without incurring any obligations to make the same or similar changes to trailers. Unloaded vehicle weight (UVW) information is intended as a guide only and does not include water, fluids or popular options. Actual weight may vary. Payload capacity does not include the weight of water, fluids, or popular options. Weights and capacities are approximate and are subject to change without notice.

# PACIFICA

## FEATURES - EXTERIOR

- 16" Aluminum Wheels
- Dual Slide-Out Controls Exterior/Interior
- Equa-Flex™ Rubberized Suspension
- Extra Large Heavy Tinted Windows
- Extra Large Holding Tanks 85/50/50
- Laminated, Aluminum Framed Sidewalls w/"Medalion" High Gloss Finish
- Max-Turn High Gloss Front Cap
- Nitrogen Filled Tires
- On Demand "Tankless" Water Heater
- Power Awning
- Power Jacks Front and Rear
- Rota-Flex™ Rubberized Pin Box
- Sani-Flush - Black Tank

## FEATURES - INTERIOR

- A/C 15.0 BTU - Ducted
- All Windows Open in the Main Slide
- Ceiling Fan
- Custom Colored Tub Surround
- Custom Wood Valances
- Day/Night Shades
- Extra Large LED Lit Walk-In Pantry
- Extra Large Oven w/Stove Top
- Deluxe Entertainment Center
- LED Lights w/Dimmer
- Metal Ball Bearing Drawer Guides
- Porcelain Toilet
- Upgraded Residential Style Furniture



## POPULAR OPTIONS

- 160 W Solar w/Inverter
- 2nd A/C Bedroom - 13.5 BTU
- Fireplace
- Keyless Entry Door
- Solid Surface Counter Top - Galley
- Stainless Appearance Package
- Swivel Chair [1]
- TV - Bedroom
- Winterizing - "Anti-Burst"

3411 N. Perris Blvd., Perris, CA 92571 • (951) 686-7294 • [www.pacificcoachworks.com](http://www.pacificcoachworks.com)

All information included in this brochure is the latest at the time of publication. Pacific Coachworks reserves the right to make changes and to discontinue at anytime, without notice, prices, colors, materials, equipment, accessories, specifications, models, and packages, without incurring any obligations to make the same or similar changes to trailers. All vehicles built by Pacific Coachworks, Inc. include a one year factory warranty. Roadside Assistance via Coach-Net is also included.

