



EXPECT MORE - SACRIFICE NOTHING.



8007

### **LITE** STANDARDS

- Executive Chef Kitchen , most models feature:
  - Real wood cabinet doors – not composite doors
  - Dedicated trash can storage
  - Oversized pots and pans drawers
  - 100% larger pantry than competitors
  - Deep two bowl sink with sink cover cutting boards
  - Residential metal kitchen drawer-glides with steel ball bearings
- Residential porcelain toilet with foot pedal
- Ultra lube hubs on axles (all models)
- 30,000 BTU furnace
- One-piece seamless rubber roof
- All windows in main slide-out open
- Swivel rocker (29FKS-1, 29RLS-2)

### **LITE** CAMPING-IN-STYLE PKG.

- Day and night shades
- Laundry chute
- Black trim safety glass windows
- Microwave oven with turn style
- A & E awning
- Aluminum framed sidewalls, floors, front and rear
- 5" Fabricated galvanized Steel Truss
- Full walk-on crowned roof
- 13,500 BTU air conditioner
- Raised-panel upper cabinet doors (most models)

### **LITE** VALUE PACKAGE

- True home CD/DVD system with speakers and separate zones (12 Volt compatible) MP3 player hookup on stereo
- All weather outside speakers
- Gas/electric water heater with fast recovery
- Residential tiled shower/tub surround
- TV antenna
- Cable hook-up
- Gel coated filon fiberglass

### **LITE** CONVENIENCE PACKAGE

- Outside shower\*
- Residential refrigerator front\*
- Spare Tire\*
- Outside Cook Center\*
- \* Mandatory option

### **LITE** DRY CAMPING FEATURES

- 12 Volt stereo
- Large fresh, grey and black tanks on all models
- All slide-out lights are 12 Volt
- Space for dual batteries
- Underbelly enclosed to keep debris off tanks, water lines, etc.
- Fully enclosed and heated dump valves

### **LITE** SAFETY FEATURES

- Manual backup on all main slide-outs
- Back up scare light and door side light (great for night arrivals at campground)
- LP sensor
- Smoke detector
- Fire extinguisher
- Carbon monoxide detector

### **LITE** OPTIONS

- Polar package \*
- Free-standing dinette
- Hide-a-bed sofa
- Chrome Wheels\*
- \* Mandatory option

## EXPECT MORE - SACRIFICE NOTHING

- Highest trade-in and resale value in the industry on average
- Enclosed, underbelly with heated and enclosed dump valves
- 16.2 gallons per hour – quick recovery water heater (great for bunkhouses)
- Slide-out seal is mounted in a “T” track (no sticky tape to hold slide seals on)
- Cougar – Executive Chef Kitchen (see Cougar Standards for details)
- Easy access laundry chute (all models)
- Porcelain - foot flush toilets
- Solid lambrequin leg window treatments with Day and Night Shades standard on all models
- Large picture window at all dinettes, slide-out windows open for cross ventilation
- Five side welded aluminum super structure
- 5" Fabricated galvanized Steel-Truss Rafters on 16" centers
- R7 sidewall insulation, R14 floor and ceiling insulation and R15 astrofoil in the slide-out
- Fully ducted air conditioning featuring triple insulated, foil- wrapped, light-weight ducts
- 12 Volt compatible for dry camping



**Keystone RV Company**

2642 Hackberry Dr.,  
Goshen, IN 46526 • 574-535-2100  
[www.keystone-cougar.com](http://www.keystone-cougar.com)

Product information is as accurate as possible as of the date of publication of this brochure. Features, floor plans, and specifications are subject to change without notice. Please also consult Keystone's web site at [keystone.com](http://keystone.com) for more current product information and specifications. Tow Vehicle Disclaimer: CAUTION: Owners of Keystone recreational vehicles are solely responsible for the selection and proper use of tow vehicles. All customers should consult with a motor vehicle manufacturer or their dealer concerning the purchase and use of suitable tow vehicles for Keystone products. Keystone disclaims any liability or damages suffered as a result of the selection, operation, use or misuse of a tow vehicle. KEYSTONE'S LIMITED WARRANTY DOES NOT COVER DAMAGE TO THE RECREATIONAL VEHICLE OR THE TOW VEHICLE AS A RESULT OF THE SELECTION, OPERATION, USE OR MISUSE OF THE TOW VEHICLE. June 2007.

June 2007



Your Cougar Dealer:



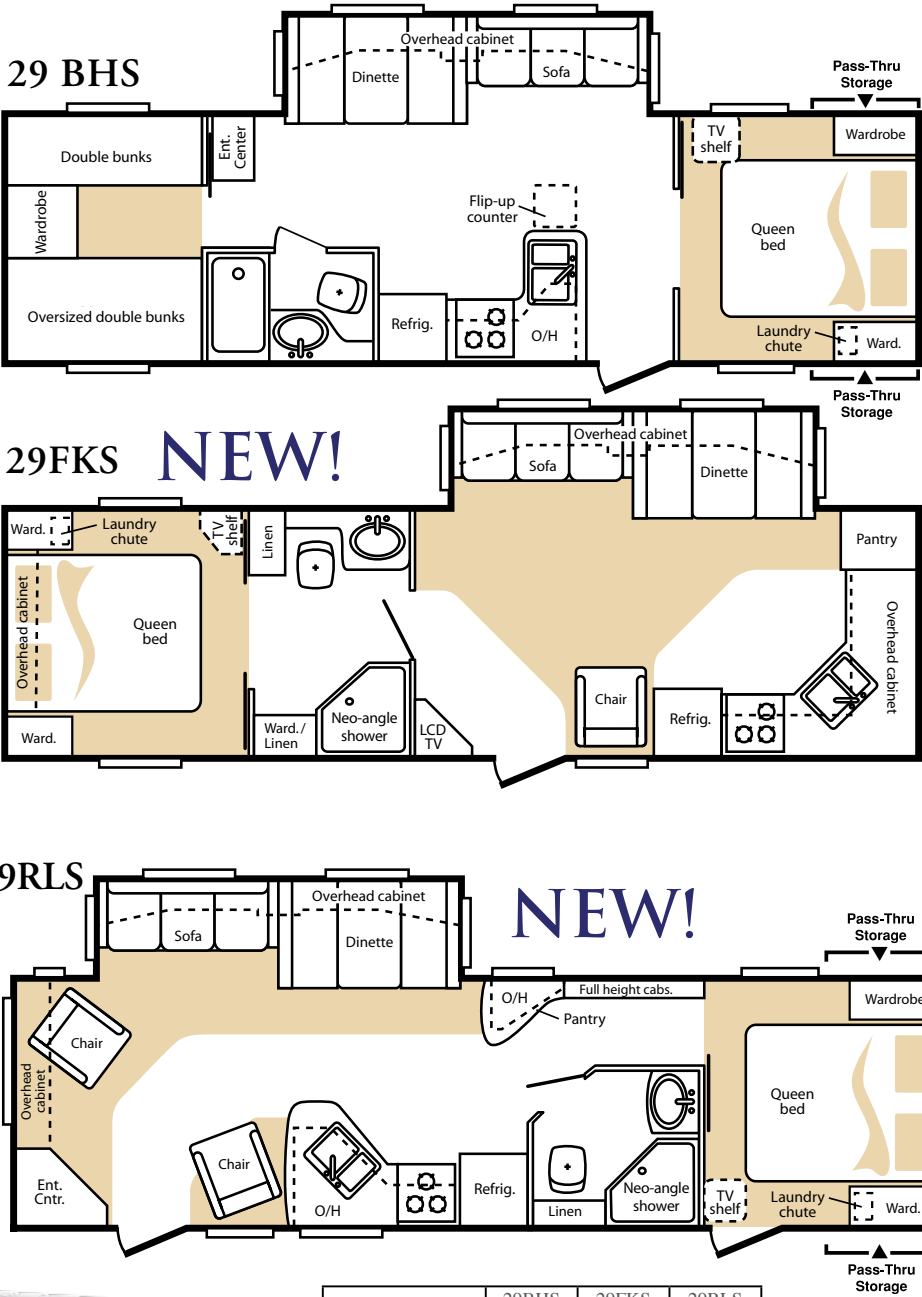
# INTRODUCING THE ALL-NEW *LITE* BY COUGAR.

You no longer have to sacrifice good taste when buying a lightweight Travel Trailer.

The innovative X-lite by Cougar shares your vision of beauty, elegance and towability.

Cougar X-lite features dazzle: a kitchen that really cooks, a magnificent master suite, a full-size slide-out and a bunkhouse model that can sleep up to nine people.

Your home away from home should reflect the way you live and the things you love.



	29BHS	29FKS	29RLS
Shipping Weight	6085	6085	TBD
Carrying Capacity	3585	3680	TBD
Hitch	870	965	TBD
Exterior Length	32' 7"	32' 6"	33'
Exterior Width	8'	8'	8'
Ext Height	10' 11"	10' 11"	10' 11"
Fresh Water	45	45	45
Waste Water	28	28	28
Grey Water	28	56	56
LPG Capacity (lb)	60	60	60



The fully-enclosed underbelly with heated and enclosed dump valves extends your camping season.



Outside camp kitchen includes a sink, spray port with hot and cold water, cook stove and a cutting board.



Easy-to-clean chrome rims add sleek style to your X-lite travel trailer.



Summer Sage



Desert Sunset



Ocean Breeze

The 29 BHS, shown in Desert Sunset, comes with a full-size slide-out and sleeps up to nine people.

LUXURIES FORMERLY RESERVED FOR THE FEW ARE NOW AVAILABLE TO EVERYONE IN THE ALL-NEW 2008 *LITE* BY COUGAR. [WWW.KEYSTONE-COUGARXLITE.COM](http://WWW.KEYSTONE-COUGARXLITE.COM).

