

BRISTOL BAY

By Sunny Brook



WHERE LUXURY AND VALUE MEET



Model 3150 FWRL shown in Copper Mountain.



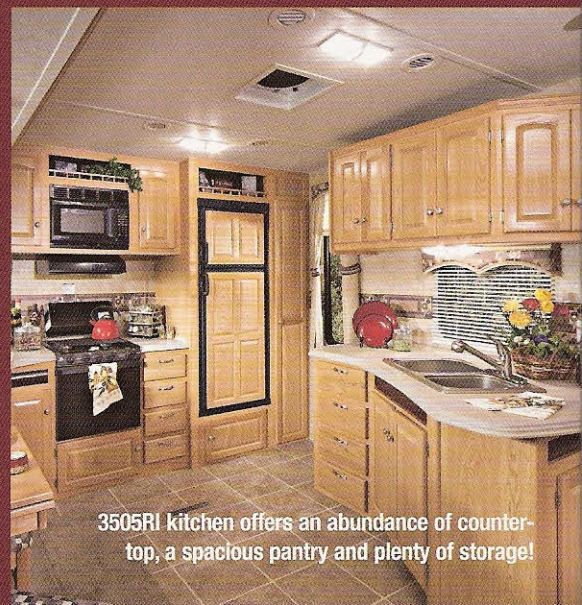
You'll find a spacious bedroom, bath and dressing area.



This 3505RI floorplan shown in Tranquility offers two large slide-outs making an incredible living area with a unique kitchen area.



The 3150 FWRL in Copper Mountain .



3505RI kitchen offers an abundance of counter-top, a spacious pantry and plenty of storage!



All Aluminum Superstructure!

CONSTRUCTION

When you choose a Bristol Bay, you're getting an aluminum Superstructure that's stronger, tows easier and will look better than others on the market. You will also get a higher return on your investment than any of the want-to-be aluminum units on the market.

SunnyBrook RV set the standard high. That's why we created and developed this aluminum-framed construction. Our ultra-light structure means a smoother ride, less fuel consumption, and a stronger body. Other brands either use minimal aluminum framing or an inexpensive, complete wood structure. Of course, if you look closer, it's easy to see that they use far less aluminum and structural support. SunnyBrook RV pioneered the aluminum Superstructure over 15 years ago because they care about quality. If you're looking for the best built trailers, see what's under the surface on a Bristol Bay.

FEATURES

BRISTOL BAY

OTHERS*

All Aluminum Superstructure

YES

NO

Hi-Gloss Gelcoat Exterior

YES

NO

Dual 30 lb. LP tanks

YES

NO

30" Radius Entry Door

YES

NO

True Queen-Size Bed (60" x 80")

YES

NO

Stain-Resistant Fabric

YES

NO

True 5.1 Stereo Surround Sound System

YES

NO

Satellite Prep

YES

NO

Oversized, Solid Surface Kitchen Countertop

YES

NO

Extra Tall Interior Slideout Height

YES

NO

Poplar Hardwood Cleats

YES

NO

Lumber Core Stiles

YES

NO

Steel Bathroom Floor Framing

YES

NO

Pull-Out Faucet at Kitchen Sink

YES

NO

Floor Decking—5/8" Exterior Grade Plywood

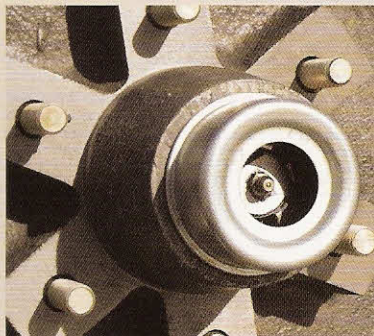
YES

NO

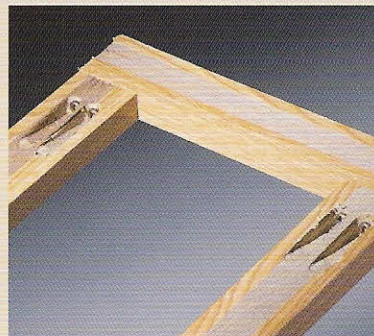
* This comparison is to "other" competitors in same category. Competitive models and features may vary.



Heated and enclosed holding tanks (60 gallon fresh!) along with ducted floor heat, and solid steel I beam frame are first class!



Beefy, six-lug hubs and Super Lube axles are standard. A Bristol Bay unit is built better and easier to maintain than others.



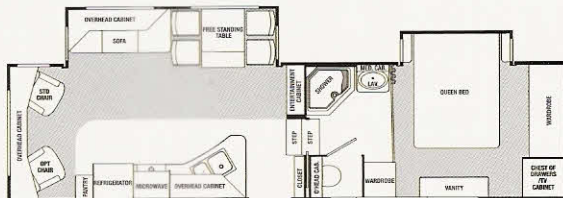
Real, Lumber Core cabinet stiles (vs. cheap MDF style stiles) are screwed together to provide the best cabinetry. We also use real poplar hardwood cabinet cleating vs. cheap pine that the competition uses.



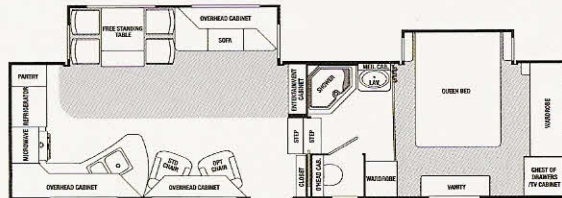
Your Bristol Bay is built better. R-26 insulation and a full walk-on and rubber roof* are more proof. Check out our aluminum superstructure!

* With Extreme Weather Package

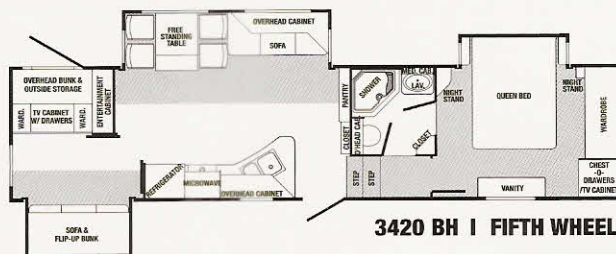
FLOORPLANS AND SPECIFICATIONS



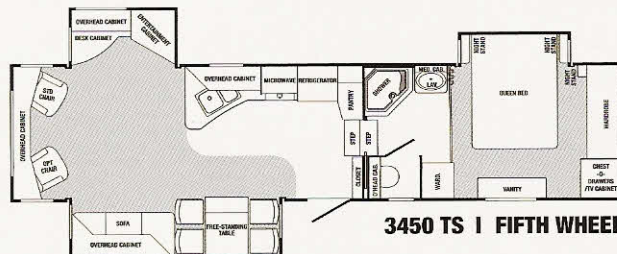
3150 RL | FIFTH WHEEL



3155 RK | FIFTH WHEEL



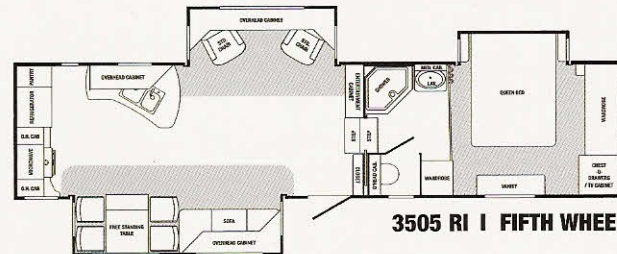
3420 BH | FIFTH WHEEL



3450 TS | FIFTH WHEEL



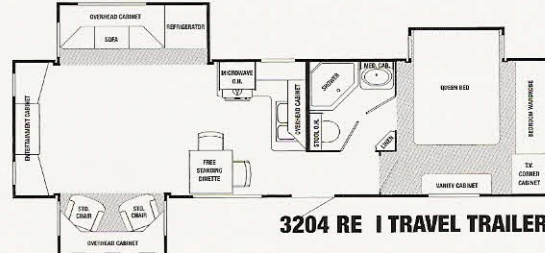
3455 CK | FIFTH WHEEL



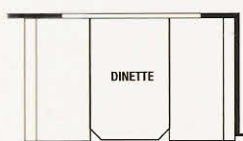
3505 RI | FIFTH WHEEL



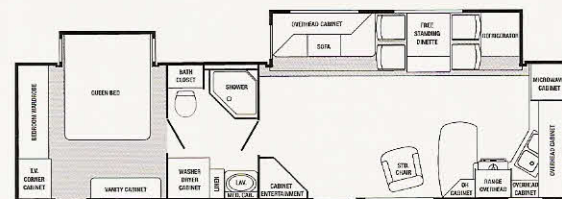
3510 RE | FIFTH WHEEL



3204 RE | TRAVEL TRAILER



OPTION BD



3208 FK | TRAVEL TRAILER

	3150 RL	3155 RK	3420 BH	3450 TS	3455CK	3505RI	3510 RE	3204 RE	3208 FK
EXTERIOR LENGTH*	32'-7 3/8"	32'-7 3/8"	36'-5"	35'-10"	35'-10"	35'-10"	36'-11"	35'-2"	35'-11 1/2"
EXTERIOR HEIGHT**	12'-3 1/2"	12'-3 1/2"	12'-3 1/2"	12'-3 1/2"	12'-3 1/2"	12'-3 1/2"	12'-3 1/2"	11'-3"	11'-3"
EXTERIOR WIDTH	8'-2 1/2"	8'-2 1/2"	8'-2 1/2"	8'-2 1/2"	8'-2 1/2"	8'-2 1/2"	8'-2 1/2"	8'-0"	8'-0"
INTERIOR HEIGHT	7'-0"	7'-0"	7'-0"	7'-0"	7'-0"	7'-0"	7'-0"	6'-8"	6'-8"
DRY HITCH WEIGHT/LBS.***	2211	2280	2440	2500	2357	2421	2255	1036	TBD
DRY GROSS WEIGHT/LBS.***	9497	9911	11103	10888	10597	10777	11425	8597	TBD
GVWR/LBS.	15000	15000	15000	15000	15000	15000	15000	11700	11700
DUAL 6000 LBS.	STR. AXLES	STR. AXLES	STR. AXLES	STR. AXLES	STR. AXLES	STR. AXLES	STR. AXLES	STR. AXLES	STR. AXLES
TIRE SIZE	ST235/80R16E	ST235/80R16E	ST235/80R16E	ST235/80R16E	ST235/80R16E	ST235/80R16E	ST235/80R16E	ST235/80R16D	ST235/80R16D
HITCH HEIGHT	48"	48"	48"	48"	48"	48"	48"	22"	22"
AWNING SIZE	20'	17'	18'	16'	18'	16'	17'	18'	18'
FURNACE SIZE	35M BTU	35M BTU	34M BTU	35M BTU	40M BTU	40M BTU	40M BTU	35M BTU	35M BTU
DOMETIC GAS/ELEC REFRIG.	DOUBLE DOOR	DOUBLE DOOR	DOUBLE DOOR	DOUBLE DOOR	DOUBLE DOOR	DOUBLE DOOR	DOUBLE DOOR	DOUBLE DOOR	DOUBLE DOOR
FRESH WATER CAPACITY/GAL.	56	56	56	56	56	56	56	56	56
BLACK WATER CAPACITY/GAL.	33	33	33	33	33	33	33	33	33
GRAY WATER CAPACITY/GAL.	69	69	69	69	69	69	69	33	69
SLEEPING CAPACITY	4 (6 w/ OPTION BD)	4 (6 w/ OPTION BD)	9 (11 w/ OPTION BD)	4 (6 w/ OPTION BD)	4 (6 w/ OPTION BD)	4 (6 w/ OPTION BD)	4 (6 w/ OPTION BD)	4 (6 w/ OPTION BD)	4 (6 w/ OPTION BD)

*From center of king pin to rear bumper **Includes AC on roof ***Not including options

STANDARDS AND OPTIONS

STANDARD FEATURES

EXTERIOR AND CONSTRUCTION

- MOR-ryde® RE Suspension
- I-Beam Frame
- High Gloss Gel Coat Exterior
- Fiberglass Front and Rear cap
- Heated and Enclosed Tanks
- R-8 Insulation, Sidewall*, R-26 floor*, Roof*
- Full Walk on Rubber Roof
- 30" Radius Entry Door
- High Illumination Scare Light
- Large Swing Out Entry Handle
- Dual 30lb. LP Tanks
- Radius Baggage Doors
- Super Lube Axles
- Awning
- Stabilizer Jacks
- Power Front Jacks (Fifth Wheels only)
- 56 Gallon Fresh Water Tank
- 5/8" Plywood Flooring
- 15.0 Ducted Air Conditioner
- Ducted Floor Heat
- Extra Large Storage
- Rear Ladder

INTERIOR

- Porcelain Foot Flush Toilet
- Night Shades
- Satellite Prep
- Rebond Carpet Padding
- Cable TV Hookup
- Glass Shower Door (when applicable)
- TV Antenna and Booster
- Tub / Shower Surround
- Double Door Refrigerator
- Deep Lipped Overhead Cabinetry
- Microwave

- Oven 21"
- Entertainment Center Cabinet
- Pull-out Kitchen Faucet
- Under Bed Storage with Gas Struts and safe
- Oversized Lavatory Sink
- True 5.1 Stereo Surround
- AM/FM/DVD 5.1 Entertainment Center
- Lumber Core Cabinet Stiles
- 3 Burner Range
- Screwed Cabinet Frames
- Solid Surface Kitchen Countertop
- 10 Year Cabinet Door Warranty
- LP Leak Detector
- Steel Ball Bearing Full Extension Drawer Guides
- Carbon Monoxide detector
- Poplar Wood Cleats (a true hard wood)
- Bathroom Power Vent
- Free Standing Table and Chairs
- 60" x 80" Bed
- Angled and Stylish Overhead Cabinetry
- 6 Gallon DSI Gas/Electric Water Heater
- Wallpaper Border
- Bedspread
- Valances with Curtains
- Water Heater By-pass
- E-Z Winterizing System
- 26" LCD TV

OPTIONAL EQUIPMENT

- Swivel Rocker
- Hide-a-Bed Sofa
- 13.5 Ducted A/C in Bedroom
- 15.0 Ducted A/C in Bedroom
- Fantastic Fan w/ Rain Sensor
- Aluminum Wheels
- Slide Room Awning
- Ceiling fan

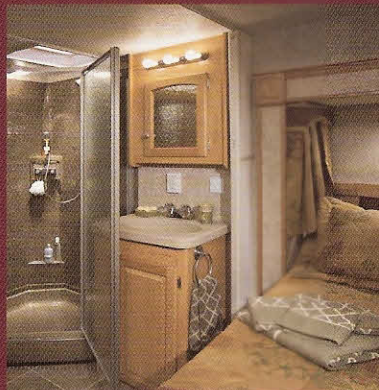
- 10 Gal. Gas/Electric DSI Water Heater
- Pre-wire for Second A/C (Requires 50 amp)
- 50 amp Service
- MOR-ryde® Extended Pin Box
- Generator Prep (LP Only)
- Kitchen/Bedroom Slide Room Awning
- Extreme Weather Package
- Convection Microwave
- Central Vacuum (Requires 50 amp) Fireplace (Requires 50 amp, N/A on 3150 and 3155)
- 16" Spare Tire and Carrier
- 5500 LP Onan® Generator
- (3) 40lb. LP Tanks on Slide Tray
- Wood Look Floor
- Washer/Dryer Prep
- King Bed
- Outside Shower
- Create-a-Breeze Kitchen/Bathroom
- 12 Volt Power Awning

* With Extreme Weather Package

And more. See your Bristol Bay dealer for details. Standards, options and specifications are subject to change.



Model 3155 RK is shown in Cocoa Bay.



Our large 60x80 inch bed and oversized lavatory sink, tub/shower surround with glass door, and bathroom power vent are nice amenities.



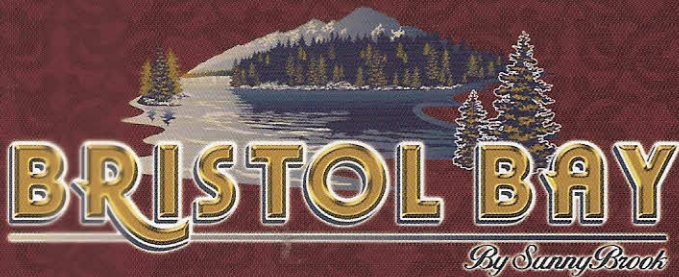
This large, solid-surface kitchen countertop along with pull out faucet and a 21" oven and microwave are all standards.



Great standards like these swivel rockers, and options like a Hide-a-Bed sofa, central vacuum and much more are available on Bristol Bay.



This console includes a TV and AM/FM/DVD 5.1 entertainment center with true stereo surround sound. All standard features on all models.



www.sunnybrookrv.com

(574) 825-5250

201 14th Street

Middlebury, IN 46540

Printed in the USA

© SunnyBrook RV, Inc

Rev. 2/08

Tow Vehicle Disclaimer: CAUTION: Owners of SunnyBrook RV, Inc. recreational vehicles are solely responsible for the selection and proper use of tow vehicles. All customers should consult with a motor vehicle manufacturer or their dealer concerning the purchase and use of suitable tow vehicles for SunnyBrook RV, Inc. products. SunnyBrook RV, Inc. disclaims any liability or damages suffered as a result of the selection, operation, use or misuse of a tow vehicle. SUNNYBROOK RV INC.'S LIMITED WARRANTY DOES NOT COVER DAMAGE TO THE RECREATIONAL VEHICLE OR THE TOW VEHICLE AS A RESULT OF THE SELECTION, OPERATION, USE OR MISUSE OF THE TOW VEHICLE.

All illustrations and specifications contained in this literature are based on the latest product information available at the time of printing. SunnyBrook RV, Inc. reserves the right to make changes to colors, materials, specifications and pricing without notice or obligation. Photography may show optional equipment available at an additional cost. Items used as props in photography are not part of the packages. All liquid capacities and weights are approximate and dimensions are nominal. SunnyBrook reserves the right to make changes and improvements without incorporating these changes into similar models produced at an earlier date. Consult your local, authorized Bristol Bay or SunnyBrook dealer for the latest information and changes. SunnyBrook RV, Inc. continues to be a member in good standing of the RVIA.