

2 0 0 1   T R A V E L   T R A I L E R S

# Aluma-Lite®

A HIGHER LEVEL OF RECREATION AND ENJOYMENT.







LEFT — (Top to bottom)  
Western Oak cabinets are  
standard, Colony Oak and  
Walnut are optional.

BELOW — Decor choices  
are Mahogany, Coral Coast,  
Sea View, and Emerald

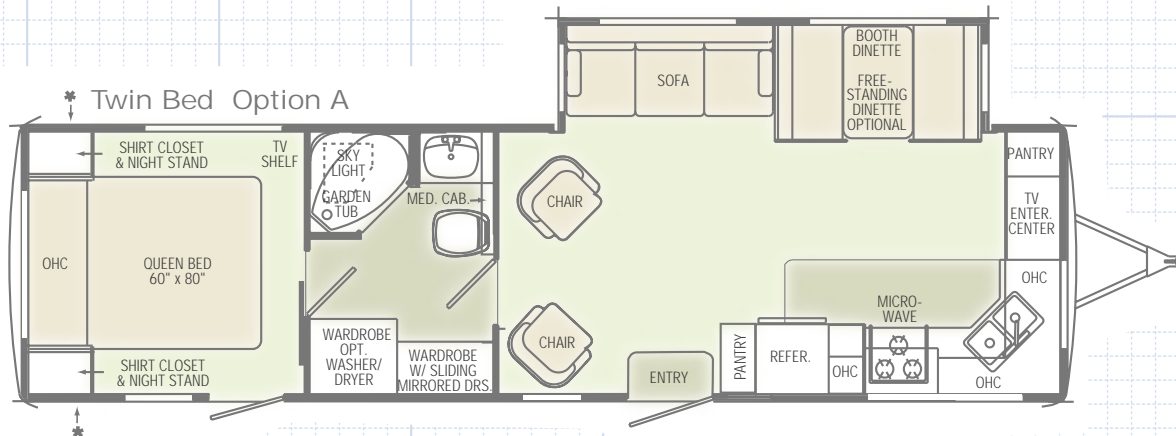
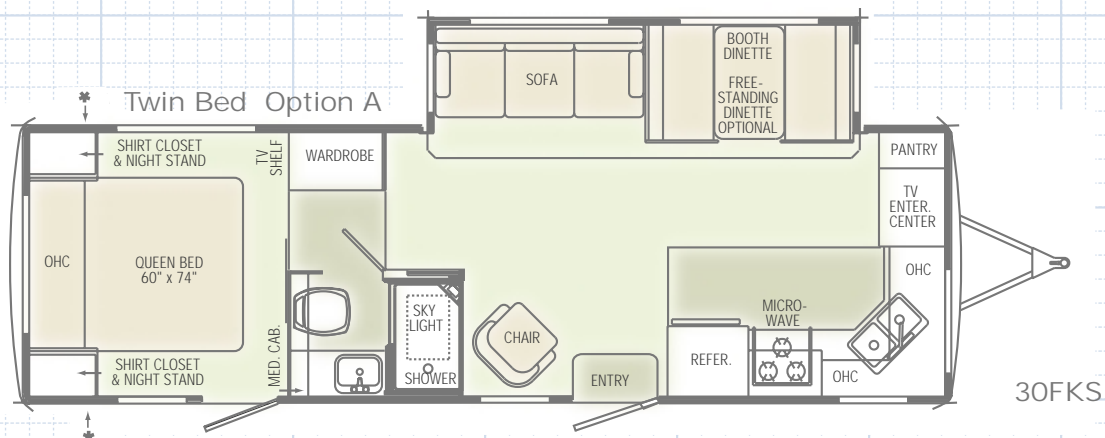
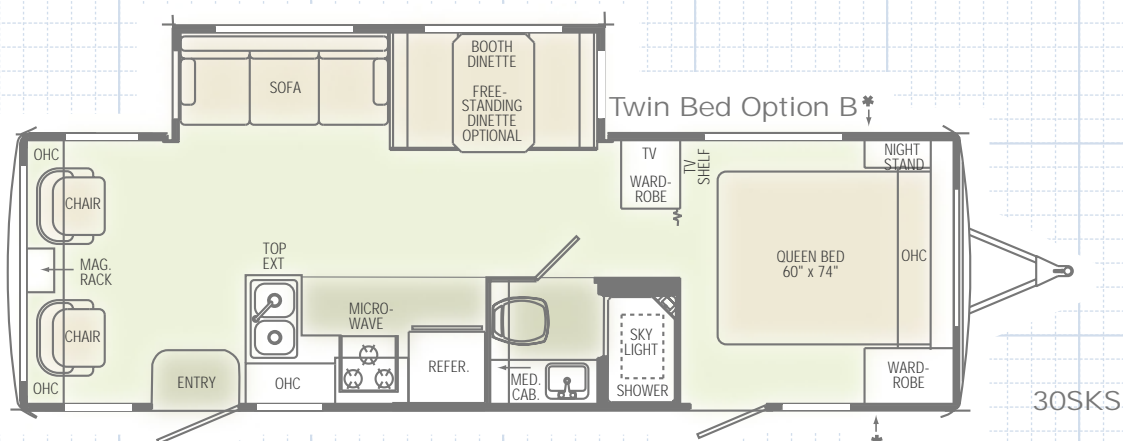
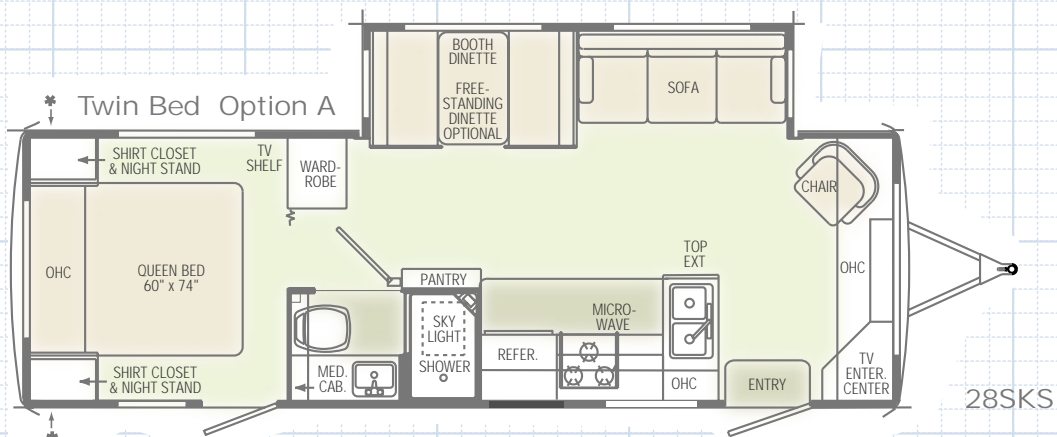


# 2001 Aluma-Lite® FLOOR PLANS

Carpet

Linoleum

\* Outside Storage





# 2001 Aluma-Lite® SPECIFICATIONS

WEIGHTS	28SKS	30SKS	30FKS	33FKS	34FKS
Gross Vehicle Weight Rating (Lbs.)	10,000	10,000	10,000	10,250	10,250
Hitch Weight (Lbs.)	980	870	N/A	1,340	1,230
Axle(s) Weight (Lbs.)	5,200	5,200	5,200	5,200	5,200
Unloaded Vehicle Weight (Lbs.)	7,280	7,580	N/A	8,160	8,220
Net Carrying Capacity (NCC) (Lbs.)	2,720	2,420	N/A	2,090	2,030
Tire Size	15"	15"	15"	15"	15"
Tire Load Range	D	D	D	D	D

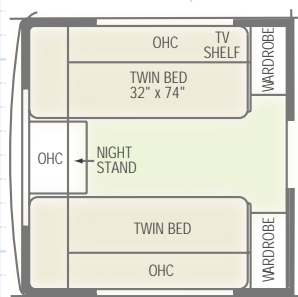
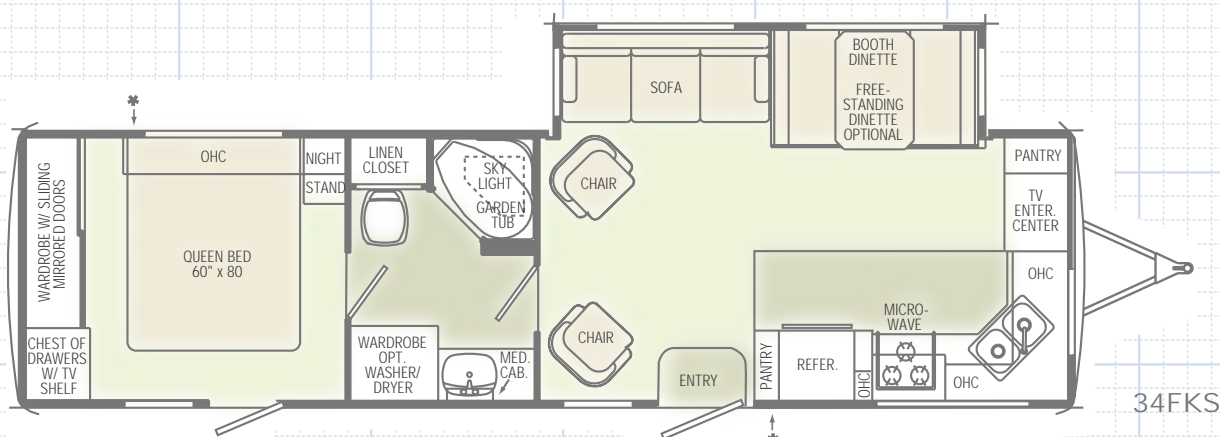
## MEASUREMENTS

Overall Length	29' 2"	30' 10"	30' 10"	33' 10"	34' 6"
Overall Height (including A/C)	10' 8"	10' 8"	10' 8"	10' 8"	10' 8"
Exterior Width	98"	98"	98"	98"	98"

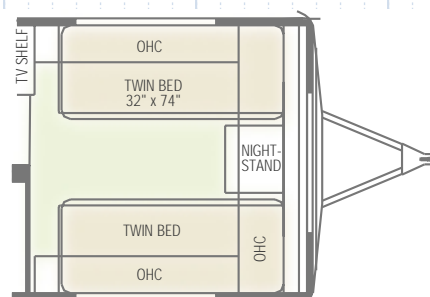
## TANK CAPACITIES

All Tank Capacities are Approximate. Actual "Usable Capacities" May Vary as a Result of Variances in Installation and Fabrication of the Tanks

Water Heater (Gal.)	6	6	6	6	6
Gray Tank (Gal.)	40	40	40/40	40/40	40/40
Black Tank (Gal.)	40	40	40	40	40
Fresh Tank (Gal.)	60	60	60	60	60
L.P. Tank (Gal.) (2)	30	30	30	30	30



Twin Bed Option A



Twin Bed Option B

Due to the large variety of options and floor plan arrangements available to our customers, actual weights for each unit can differ significantly. Holiday Rambler provides a weight sticker in each unit we produce which includes that unit's tank capacities and approximate weight. Consult your local Holiday Rambler dealer for unit availability and further information.

The information printed in this brochure reflects product design, fabrication, and component parts at the date of printing. The manufacturer reserves the right, at any time, to make changes in product design or material or component specifications as its sole option, without notice. This includes the substitution of components of a different brand or trade name which will result in comparable performance. All information printed in this brochure is subject to change after the date of printing. Some features shown or mentioned in this brochure are optional and may only be available in selected floor plans. Photographs may

show props or decorations that are not standard equipment on Holiday Rambler models.

Holiday Rambler, the HR logo and its design, are registered trademarks. All other products and company names are trademarks and/or registered trademarks of their respective holders.

While the color of the towable exteriors and the interior fabrics depicted in this sales brochure are fair and reasonable depictions, the colors depicted may not be an exact match of the actual colors because of the variances in photo-processing and variances caused by inserting the photographs within the sales brochure. Due to product improvements, changes during the model year and/or transcription errors that may occur, information represented within this brochure may not be accurate at the time of your purchase. If certain information is significant to your purchasing decision, please confirm the information with your dealer prior to submitting your order.

## BODY AND FRAME CONSTRUCTION

### Standard Features

Alumaframe® Superstructure  
Heavy Duty Steel 10-inch I-beam Frame  
Vinyl Exterior Graphics  
Heavy Duty Side Metal Wrap  
Two Wrap Storage Doors  
Smooth Aluminum Exterior Walls

### Front Molded Fiberglass Cap, LP Bottle

#### Cover and Battery Cover

Rear Molded Fiberglass Cap  
with Integrated Bumper  
3/8-inch Foam Core, Thermal  
Barrier Laminated Sidewall  
Structure

Steel Frame Sub-Floor

5/8-inch Structurewood Flooring

Enclosed Heated Underbelly with  
Side Wraps

10-Layer Aluminum Roof Structure with  
RV 2000 Roofing Material

Vapor Barrier in Roof

Soft Padded Vinyl Ceiling

Flat Floor Slide-Out Rooms



**Storage Under Rear Bed** (N/A: with Twin  
Bed Option) (N/A: 30SKS, 34FKS)

Tandem Axles with Electric Brakes

### Shock Absorbers

Radial Tires

Stylized 15-inch Sport

Wheels with Trim Ring and  
Chrome Center Hub

Spare Tire with Sport Wheel  
with Carrier Under Frame

### Options

**Chrome Wheels** (Four)

Scissor Jacks

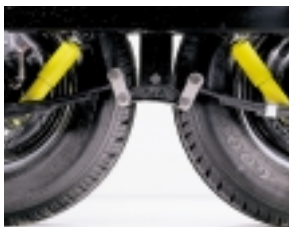
Gel Coat Fiberglass Sidewalls

Lighted Power Hitch Jack

Rear Ladder

Large Double-Door

Refrigerator



## APPLIANCES

### Standard Features

High Output Three-Burner Range/Oven  
Systems Monitor Panel on Range Hood  
with 12 Volt Fan

Bi-Fold Range Cover

TV Antenna and Booster  
with One-12V Recept. and  
TV Jack(s)

### Microwave with Touch

#### Control

Cable TV/DSS/  
VCR Hook-Ups with Video  
Control Box  
Telephone Jacks in Kitchen  
and Bedroom Areas

#### AM/FM

**Electronic Tune with CD  
Stereo and Cassette  
(Four Speakers)**

### Options

Large Double-Door

Refrigerator with Ice Maker

20-inch Color TV with Remote  
Control in Living Area  
(Requires TV Swivel Base)

13-inch Color TV with  
Remote Control in Bedroom

TV Swivel Base (N/A: 28SKS,  
30SKS)

### Surround Sound Speaker System

DSS Dish with Stand

Washer/Dryer Prep with 50 amp Service  
(Requires 10 Gallon DSI Gas/Elec.  
Water Heater) (33FKS, 34FKS)

Vented Combination Washer/Dryer  
(Requires Washer/Dryer Prep)  
(33FKS, 34FKS)

VCR



## INTERIORS (cont.)

### Standard Features

Laminate Kitchen Countertop with Solid  
Surface Countertop Edging

Color Matched Kitchen Sink Covers

Kitchen Countertop  
Extension (28SKS, 30SKS)

Clock

Pantry with Adjustable  
Shelving (N/A: 28SKS,  
30SKS)

Tip-Out Tray by Sink

Lined Wardrobe(s)

TV Shelf in Bedroom

Dressing Mirror

Medicine Cabinet

Toilet Tissue Holders

Towel Racks on Bathroom  
Door

Decor Glass in Cabinet Doors  
Slide-Out House Fascia Trim  
with Fabric Inserts

Carpeting and Pad in Living  
Area, Hallway and Bedroom

Linoleum in Bathroom,  
Kitchen and Entry

Decor Mirrors

### Options

Plank Floor in Kitchen and

Entry

Raised Panel Insert for the Refrigerator

Colony Oak or Walnut Cabinets

Designer Area Rug

## FURNITURE

### Standard Features

Queen Bed Head-To-Rear  
(N/A: 30SKS, 34FKS)

Queen Bed Head-To-Front (30SKS only)

Queen Bed Head-To-Off-Door Side  
(34FKS only)

Wood Booth Dinette with 36-inch  
Storage Drawers

Bedspring

Headboard

Easy-Bed Sleeper Sofa with Two Bolsters

Swivel Barrel Chair (Two in 30SKS,  
33FKS, 34FKS)

### Options

Leather Hide-A-Bed Sofa (33FKS, 34FKS)

Hide-A-Bed Sleeper Sofa with Two Throw  
Pillows (33FKS, 34FKS)

## FURNITURE (cont.)

### Options

Fabric Recliner (Two in 30SKS, 33FKS, 34FKS)

Leather Mate Recliner (Two in 30SKS, 33FKS, 34FKS)

Coffee Table

Free-Standing Dinette (Drop Leaf Trestle Table) with Four Wood Chairs

Twin Beds with Wardrobe (N/A: 30SKS, 34FKS)

Twin Bed with Night Stand (30SKS)

## ELECTRICAL SYSTEMS AND LIGHTS

### Standard Features

Electrical Management System (30 amp 12V with 55 amp Conv.)

Porch Light

120V Exterior Receptacle

Utility Service Light

### Entry Step Light



Wardrobe Lights

Hitch Light/Trunk Light

Decorative Dinette Light

Decorative Living Room Light

Cosmetic Light in Bathroom

Battery Disconnect Switch

12V Incandescent Ceiling Lights

Decorative Lights in Bedroom

### Options

Exterior Security Lights with Living Area and Bedroom Switch

One 12V Deep Cycle Battery

Two 12V Deep Cycle Batteries

Solar Prep

Fluorescent Ceiling Lights

## PLUMBING AND LP SYSTEMS

### Standard Features

White Kitchen Sink with Single Handle Lever Faucet (Dual Deep Basin)

Demand Water System with Water Pump

## PLUMBING AND LP SYSTEMS (cont.)

### Standard Features

6 Gallon LP Gas Water Heater with Electronic Ignition (DSI)

Fiberglass One-Piece Tub/Shower

Accordion Shower Door

### Outside Shower



Porcelain Toilet

Two 30 Lb. LP Tanks with Automatic Changeover and Cover

### Options

Fold-Down Shower Seat

Water Heater By-Pass Kit

No-Fuss Flush Holding Tank Rinsing System

6 Gallon LP Gas/Electric Water Heater with Electronic Ignition (DSI)

10 Gallon LP Gas/Electric Water Heater with Electronic Ignition (DSI)

Water Filter System in Kitchen

### Glass Shower Door

## SAFETY

### Standard Features

Fire Extinguisher

Deadbolt Lock(s) on Entrance Door(s)

120V GFI Protected Outlets (Kitchen, Bathroom and Exterior)

Breakaway Switch

Safety Chains

LP Gas Detector

Smoke Detector

Egress Window(s)

Safety Glass

## WINDOWS AND DOORS

### Standard Features

Tinted Radius Windows

30-inch Radius Main Entrance Door with Anti-Skid Steps

## WINDOWS AND DOORS (cont.)

### Standard Features

26-inch Bedroom Entrance Door with Anti-Skid Steps (N/A with Twin Beds)

Front High-Gloss Gel Coat Fiberglass Travel Awning

### Options

Tinted Skylight in Bathroom

Acrylic Patio Awning with Cover

Acrylic Slide-Out Awning

Swing-Out Entry Door Handle (N/A: 30SKS)

Dual Pane Windows

## HEATING, VENTS AND AIR CONDITIONING

### Standard Features

30M BTU Hydroflame® Electronic Ignition Furnace (28SKS)

35M BTU Hydroflame® Electronic Ignition Furnace (N/A: 28SKS)

One DuoTherm® 13.5M BTU

Air Conditioner with Ducted

Air and Wall Thermostat

In-Floor Ducted Heating System

Manual Roof Vent

12V Roof Vent in Bathroom

### Options

15.0M BTU A/C ILO 13.5M

12V Roof Vents

12V Attic Fan with Wall Switch



## WINDOW TREATMENTS

### Standard Features

Living Room: Mini Blinds, Padded Valances and Decorative Drapery Panels

Kitchen: Mini Blinds and Valance

Bedroom: Mini Blinds, Valances and Decorative Drapery Panels

### Options

Pleated Day/Night Shades in Living Area and Bedroom