

2008



	Workhorse UFO Rear-Engine Gas 2007 MY	Freightliner XC Rear-Engine Diesel 2007 MY - 2007 CY Emissions
GVWR	26,000 lbs.	27,910 lbs.
GAWR (Front)	9,500 lbs.	10,410 lbs.
(Rear)	17,500 lbs.	17,500 lbs.
GCWR	30,000 lbs.	33,000 lbs.
Engine	GM Vortec 8.1L <ul style="list-style-type: none"> • 340-HP @ 4,200 RPM • Torque 455 lbs.-ft. @ 3,200 RPM 	Cummins® ISB 6.7L <ul style="list-style-type: none"> • 300-HP @ 2,600 RPM (prior to 4/23/07) Torque 620 lbs.-ft. @ 1,600 RPM • 340-HP @ 2,800 RPM (beginning week of 4/23/07) Torque 660 lbs.-ft. @ 1,600 RPM • Engine Exhaust Brake • Engine Block Heater
Fuel Tank	100-Gallon, LH Fill	90-Gallon, LH Fill
Transmission	Allison® 2100MH (6-Speed Automatic) w/Overdrive (5th & 6th) <ul style="list-style-type: none"> • Touch Pad Shifter • Transmission Grade Braking • Synthetic Transmission Fluid • 5-Year/200,000-Mile Warranty 	Allison 2500MH (6-Speed Automatic) w/Overdrive <ul style="list-style-type: none"> • Touch Pad Shifter • TransSynd Transmission Fluid • 5-Year/200,000-Mile Warranty
Rear Axle Ratio	6.17	4.78
Suspension	Custom-Designed Sprung <ul style="list-style-type: none"> • Front Monoleaf Parabolic Spring • Rear Coil Springs w/Torque Box & Trailing Arm Ridge Design • Bilstein® Shocks 	Full Air w/Air Dump <ul style="list-style-type: none"> • Front: NeWay® AS120, I-Beam Axle • Rear: NeWay ADL • Sachs Shocks
Wheels	Steel 22.5 x 7.5	Steel 22.5 x 7.5
Tires	Michelin® XRV 255/80R22.5 LR 'G'	Michelin XRV 255/80R22.5 LR 'G'
Brakes	HPB Quadraulic <ul style="list-style-type: none"> • 4-Wheel Disc • 4-Wheel Antilock (ABS) 	Full Air <ul style="list-style-type: none"> • 4-Wheel Drum • 4-Wheel Antilock (ABS)
Steering	Power Assist <ul style="list-style-type: none"> • 18" Diameter Wheel - Custom Vinyl • Tilt Wheel • 55° Wheel Cut 	Power Assist <ul style="list-style-type: none"> • 18" Diameter Wheel - Vinyl - Wrap • TRW Foot Release Tilt & Telescope • 55° Wheel Cut
Driver Pedals	Adjustable	Fixed Treadle
Instrument Cluster	Single-Gauge Cluster w/Trip Computer <ul style="list-style-type: none"> • Black Face, White Text, & Red Pointer 	Individual Gauges <ul style="list-style-type: none"> • Black face w/Smoke Chrome Bezel & Red Pointer • Information Center
Electrical	Battery - One Group 24, 690 CCA Alternator - 145-Amp. Delco	Batteries - Two Group 31, 1900 CCA Total Alternator - 170-Amp. Leece-Neville

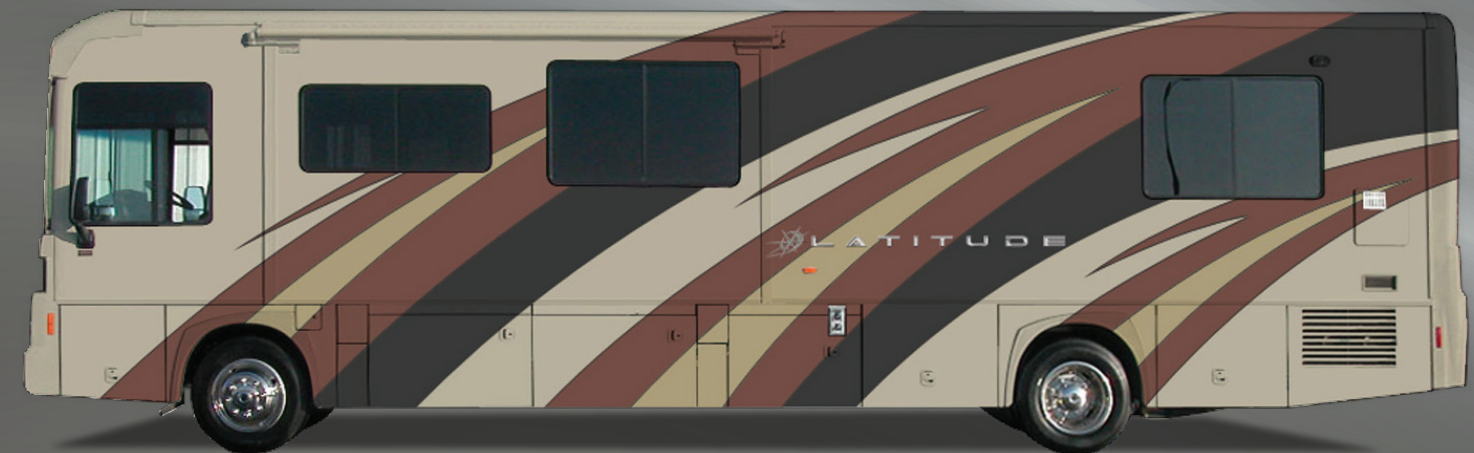
ALL NEW

Unlike anything you've seen before



LATITUDE

FIREMIST - FULL BODY PAINT



GOLDEN - PAINT WITH GRAPHICS



GUNFLINT - FULL BODY PAINT



JADE STONE - PAINT WITH GRAPHICS



THE LEADER AT EVERY TURN™

SHALE GREY - FULL BODY PAINT



2008 Itasca Latitude

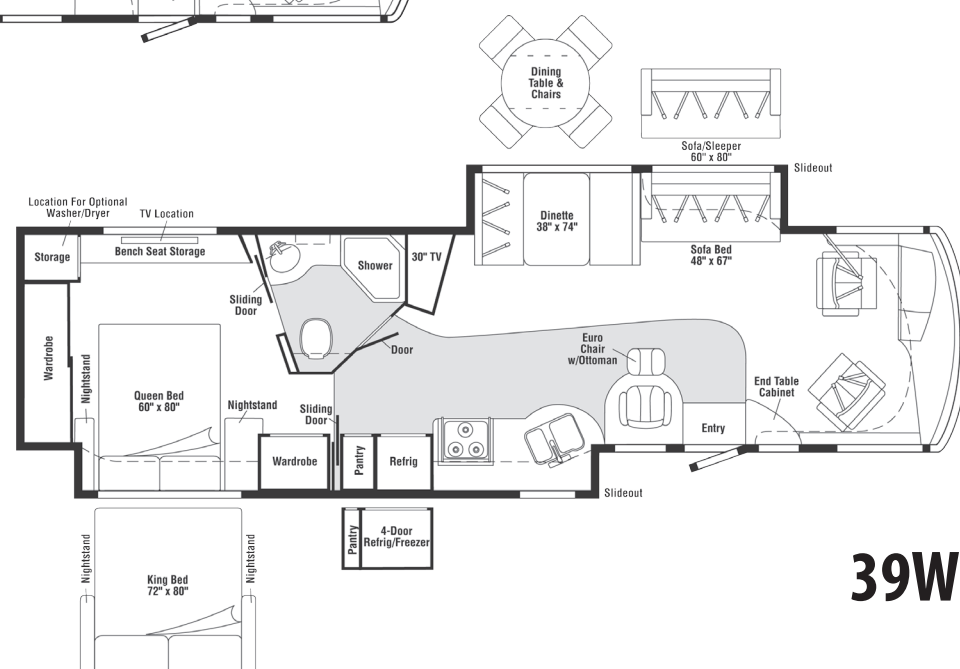
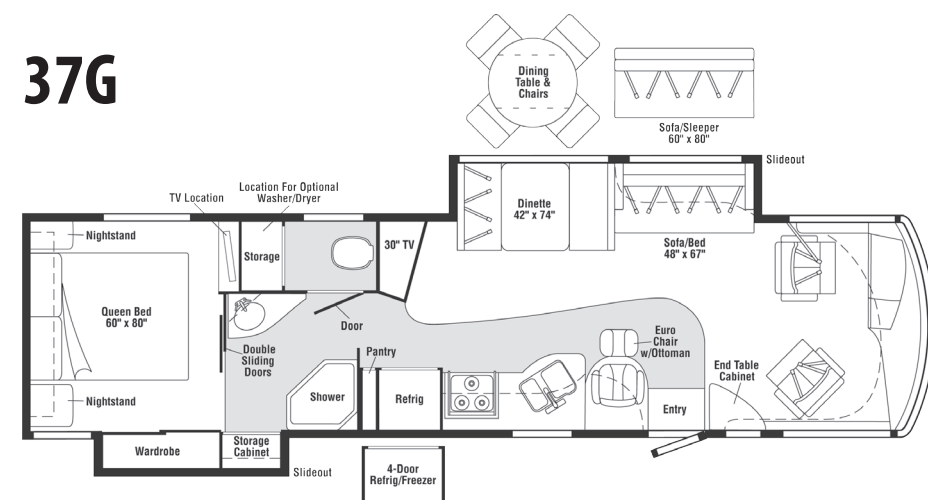
The all-new 2008 Itasca Latitude is a revolutionary pusher coach unlike any other; specifically designed from the ground up to offer the choice of a Workhorse UFO™ gas pusher or Freightliner® XC diesel pusher platform.

- ✂ Workhorse UFO Gas Pusher - Standard
- ✂ Freightliner XC Diesel Pusher - Optional
- ✂ Full Body Paint with Film Graphics
- ✂ Full Body Paint - Optional
- ✂ Mid Coach Entry
- ✂ Pass Through Storage
- ✂ Two Models, 37G and 39W
- ✂ Automatic Leveling Jacks
- ✂ Flexsteel Ultra Leather Cab Seats
- ✂ Three Décor Choices

The Latitude provides innovative, flat-floor slideout floorplans with incredible interior storage, high-volume exterior pass-through storage, and impressive interior and exterior styling and features.

- ✂ Two Wood Choices - Honey Cherry or Honey Cherry with Washed Maple Accents
- ✂ Curved Cabinet Doors
- ✂ 30" TV with Built in Entertainment Center
- ✂ Side-hinged Exterior Doors
- ✂ Abundant Interior Storage
- ✂ Side View Video Camera - Optional

37G

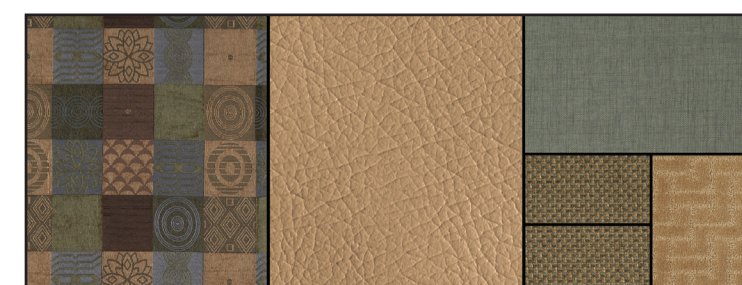


39W

Two Unique Floorplans



Rattan / Optional UltraLeather Ragweed



Wasabi Green / Optional UltraLeather Timber



Tidal Wave / Optional UltraLeather Pine Cone

MAIN	ULTRA-LEATHER	BEDSPREAD
		ACCENT
		CARPET



2-TONE SOFA



Honey Cherry



Honey Cherry w/Washed Maple Accents