

2010

Southwind

CLASS A GAS

Discover your way back to
life's little pleasures.



2010 SOUTHWIND

 **FLEETWOOD RV**



AWAKEN YOUR SENSES.

It's time for you to take time to enjoy the simple things in life. Experience the fresh, comfortable style of your Southwind. Explore its fully-appointed galley. Unwind in its spacious master suite. In Southwind, the journey is as pleasurable as the destination.

The Bathroom is a cut above the rest, with a Moen® faucet and attractive bow-front sink that's especially handy for shaving. The roomy medicine cabinet offers ample space for make-up, and the oversized mirror lets you check your look.

The Bedroom Suite feels as good as it looks. The luxurious Restonic® mattress is queen-size with a pillowtop and innersprings. For even more comfort, upgrade to an air mattress that lets you customize each side separately.



Optional washer/dryer combo available on select models.



The Entertainment System lets you unwind with a great movie. Enjoy your favorites on a 26" LCD HDTV and DVD player with home theater sound.

The Galley is the place to cook up those freshly caught trout on the three-burner stove — you'll appreciate the Fan-Tastic® roof fan that circulates the air. For faster cooking, try the optional GE® convection microwave.



WHY BUY SOUTHWIND?

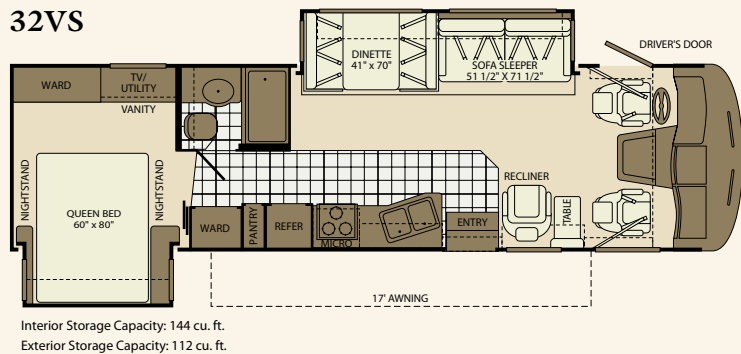
- Contemporary Styling
- Full-Body Paint
- Entertainment Centers
- Comfort and Convenience
- Power Platform Construction®

Southwind 36D shown in Domino interior décor with Symphony Cherry wood cabinetry.

SOUTHWIND. WIDE OPEN SPACES. INSIDE AND OUT.

FLOOR PLANS

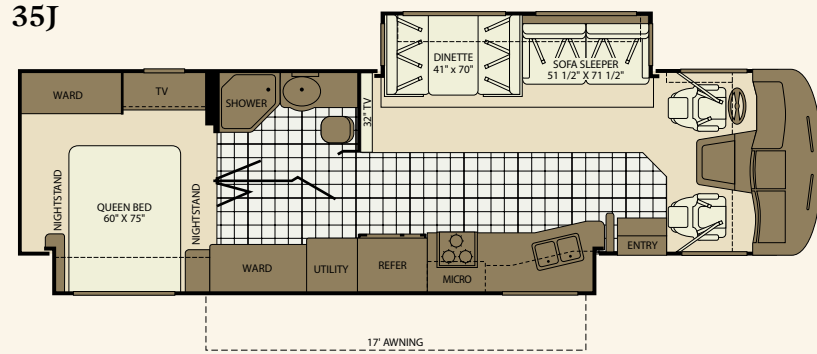
32VS



Interior Storage Capacity: 144 cu. ft.
Exterior Storage Capacity: 112 cu. ft.

• Available Options: 491, 833

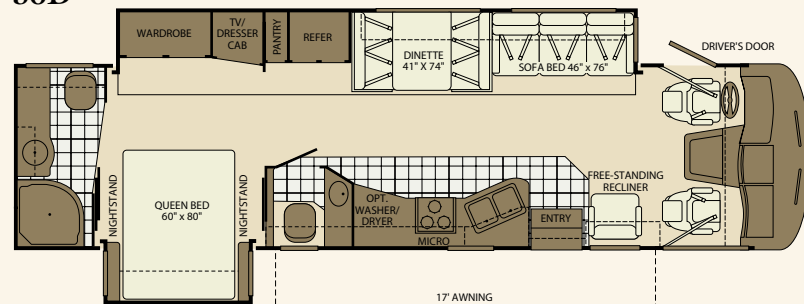
35J



Interior Storage Capacity: 173 cu. ft.
Exterior Storage Capacity: 87 cu. ft.

• Available Options: 122, 126, 631, 833, 852

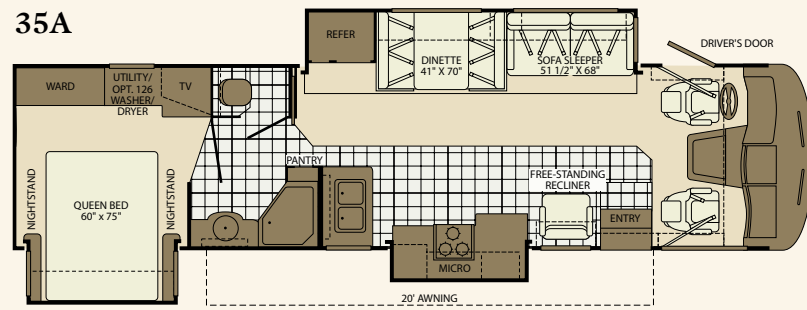
36D



Interior Storage Capacity: 145 cu. ft.
Exterior Storage Capacity: 105 cu. ft.

• Available Options: 122, 126, 491, 833

35A

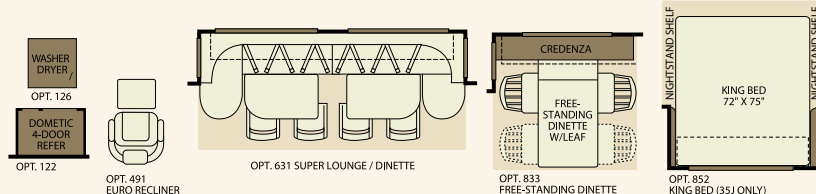


Interior Storage Capacity: 143 cu. ft.
Exterior Storage Capacity: 108 cu. ft.

• Available Options: 122, 126, 491, 833

OPTIONS

Seatbelt configuration may vary depending on options chosen.



Southwind



WEIGHTS AND MEASUREMENTS

FORD® CHASSIS/ WORKHORSE™ CHASSIS				
MODELS	32VS	35A	35J	36D
Engine Displacement (Liters)	6.8/8.1	6.8/8.1	6.8/8.1	6.8/8.1
Wheelbase (Inches)	208"	228"	228"	228"
GVWR (lbs) ¹	22,000	22,000/24,000	22,000	22,000/24,000
Front GAWR (lbs) ²	7,500	7,500/9,000	7,500	7,500/9,000
Rear GAWR (lbs) ²	14,500	14,500/15,500	14,500	14,500/15,500
GCWR (lbs) ³	26,000	26,000/30,000	26,000	26,000/30,000
Hitch Rating Weight (lbs) ⁷	5,000	5,000/6,000	5,000	5,000/6,000
Tongue Weight (lbs) ¹	500	500/600	500	500/600
Fuel Capacity (gal)	75	75	75	75

Liquid Weight Reference:
Water (gal) = (8.3 lbs/3.8 kgs) Fuel (gal) = (6.1 lbs/2.8 kgs) Propane (gal) = (4.2 lbs/1.9 kgs)

Metric Conversion:
Multiply pounds x 0.453 to obtain kilograms. Multiply gallons x 3.785 to obtain liters.
Multiply liters x 61 to obtain cubic inches.

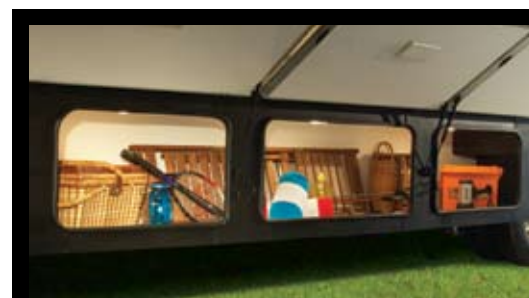
DIMENSIONS & CAPACITIES

MODELS	32VS	35A	35J	36D
Overall Length ⁴	33' 5"	36' 5"	36' 11"	36' 5"
Overall Height (with A/C)	12' 10"	12' 10"	12' 10"	12' 10"
Overall Width (maximum) ^{5,6}	102"	102"	102"	102"
Interior Height (maximum)	84"	84"	84"	84"
Interior Width (maximum)	96"	96"	96"	96"
Fresh Water Holding Tank (gal)	80	80	85	80
Grey Water Holding Tank (gal)	58	58	58	58
Black Water Holding Tank (gal)	42	42	42	42
Appliance Propane Tank (gal) (WC) ⁷	25	25	25	25
Water Heater Tank (gal)	10	10	10	10

Model: Ford®/Workhorse™
Engine: 6.8L Triton V10/8.1L Vortec™ V8
Transmission: Ford®, 5-Spd. Automatic w/Overdrive
Workhorse™, 6-Speed Automatic w/Overdrive
Alternator: 130 Amp/145 Amp
Torque: 457 lb-ft @ 3250 RPM/455 lb-ft @ 3200 RPM
Horsepower: 362HP/340HP

- GVWR (Gross Vehicle Weight Rating) is the maximum permissible weight of this fully loaded motor home. The GVWR is equal to or greater than the sum of the (UVW) unloaded vehicle weight plus the (OCCC) occupant cargo carrying capacity*.
 - GAWR (Gross Axle Weight Rating) is the maximum permissible loaded weight a specific axle is designed to carry.
 - GCWR (Gross Combined Weight Rating) is the value specified by the motor home manufacturer as the maximum allowable loaded weight of this motor home with its towed vehicle. Towing and braking capacities may be different. Refer to Fleetwood and chassis manufacturer's manuals for complete information.
 - Length measured from front bumper to rear bumper (excludes accessories).
 - Excludes safety equipment and awnings.
 - Motor homes feature a body-width over 96" which will restrict your access to certain roads. Before purchasing, you should research any state and/or province road laws which may affect your usage.
 - Tank manufacturer's listed water capacity (WC). Actual propane capacity is 80% of water listing as required by the safety code.
- † The chassis manufacturer recommends the installation of a supplemental brake control system to activate the brakes on the vehicle or trailer you are towing. Hitch receiver ratings expressed are maximum for the hitch receiver installed and may require the purchase of additional equipment that is dependent on the weight of the towed load. Consult with hitch receiver manufacturer for further information.
- * UVW and OCCC are found on the label containing the federal certification tag in each RV.

IMPORTANT — PLEASE READ: Product information, photography and illustrations included in this publication were as accurate as possible at the time of printing. For further product information and changes, please visit our website at www.fleetwoodrv.com or contact your local Fleetwood dealer. Prices, materials, design and specifications are subject to change without notice. All weights, fuel, liquid capacities and dimensions are approximate. Fleetwood has designed its recreational vehicles to provide a variety of uses for its customers. Each vehicle features optimal seating, sleeping, storage and fluid capacities. The user is responsible for selecting the proper combination of loads (i.e. occupants, equipment, fluids, cargo, etc.) to ensure that the vehicle's capacities are not exceeded.



THE EZ STORE COMPARTMENT holds large items like golf equipment, coolers, or even a ladder. It moves with the slide-out so you're not stooping underneath.



PASS THROUGH STORAGE is included on select models. This big space holds chairs, sports gear and more – and you can access it from either side of the coach.

EXTERIOR GRAPHICS

Champagne Star



Fire Storm



Satin Steel



White Pearl

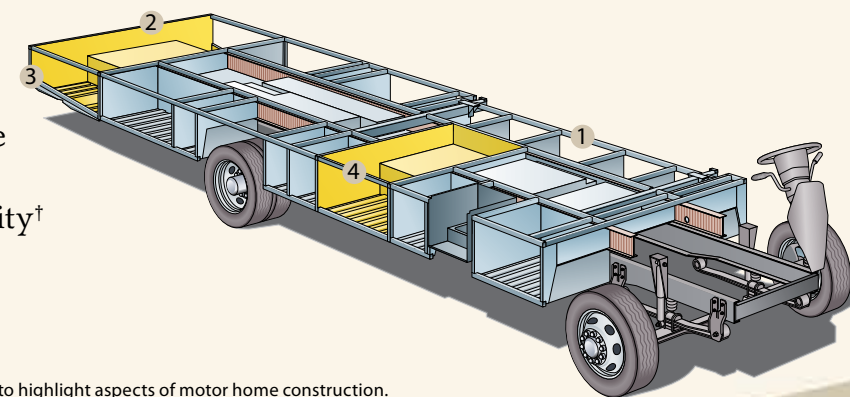


POWER PLATFORM®.

Built for strength, stability and pass-through storage.

Fleetwood RV's patented Power Platform® is the envy of our competitors. The ultra-strong chassis provides enormous storage space, lined with molded plastic for easy cleaning and lit to help you see after dark. The holding tanks are positioned in the bottom to enhance balance, and enclosed so they can be heated in cold weather to help prevent freezing.

- EZ Store
- Pass-Through Storage Compartment
- Large Towing Capacity†
- Storage Maximizer



Drawings are for illustrative purposes only to highlight aspects of motor home construction. Actual motor home design depends on model and is subject to change.

† The chassis manufacturer recommends the installation of a supplemental brake control system to activate the brakes on the vehicle or trailer you are towing. Hitch receiver ratings expressed are maximum for the hitch receiver installed and may require the purchase of additional equipment that is dependent on the weight of the towed load. Consult with hitch receiver manufacturer for further information.

STANDARD FEATURES

INTERIOR THROUGHTOUT

- 10 Gallon Quick Recovery Water Heater w/Direct Spark Ignition (Gas/Electric)
- 20,000/30,000 Btu Dual Furnaces (35J, 36D)
- 3 Interior Decors
- 34,000 Btu Furnace (32VS, 35A)
- Beveled Mirrors
- Bijoux Cherry Wood Grain or Symphony Cherry Wood Grain
- Complete TuffPEX Plumbing System
- Deluxe Roller Bearing, Full Extension Drawer Guides & Transit-Ship Locks
- Demand Water Pump w/Filter
- Dual 6V Deep Cycle House Batteries
- Dual Roof A/C High Efficiency w/Solar Panel and Chill Grills
- Vinyl Ceiling, Cushioned
- Water Heater Bypass
- Whole Coach Water Filtration System
- 7' Interior Ceiling Height
- Fluorescent Ceiling Lights w/Dual Bulbs & Wood Trim

DRIVER CONVENIENCE

- 3 Point Seat Belts at Driver & Front Passenger Seats
- AM/FM Radio w/CD Player, Satellite Radio Ready w/Auxiliary Inputs
- Auto A/C Heater Combo
- Auxiliary Start Circuit
- Computer Workstation In-Dash
- Cruise Control
- Dash Fans
- Power Front Windshield Shade
- Engine Cover Convenience Tray
- Intermittent Wiper Control
- Radio Switch Main/Auxiliary Power
- iPod Docking Station
- Tilt Steering Wheel
- Battery Disconnect System
- Driver/Front Passenger Ultraleather™ Captain's Chairs w/Power Driver Seat
- DSS Manual Lift Satellite Dish
- Driver's Door w/Power Window Lift

GALLEY

- 1.4 cu.ft. Microwave Oven
- 3 Burner, High Output Range w/Oven
- 8 cu.ft. Dometic® Double Door Refrigerator
- Brushed Nickel Finish Cabinet Hardware
- Double Bowl Stainless Steel Sink
- Fan-Tastic® Power Roof Vent
- Radius Corner Cabinetry
- Range Cover Flush Mount
- Single Lever Moen® Faucet w/Sprayer
- Sink Cover/Cutting Board

- Skylight
- Solid Surface Counter Tops
- Waste Basket
- Slide-Out Dinette Bins w/Latches

LIVING ROOM

- 26" LCD HDTV
- 26" and 32" LCD HDTV in 35J
- DVD Home Theater Sound System
- Day/Night Pleated Shades
- Free-Standing Lounge Recliner (Optional on 35J)
- Residential Seat Styling

BEDROOM

- 19" or 26" LCD HDTV Dependent on Floor Plan
- Bedspreed w/Decor Pillows
- Headboard
- Pleated Shades
- Rear Speakers
- Restonic® Deluxe Pillow Top Innerspring Mattress
- Dual Pane Torque Windows
- Accessory Package (Hair Dryer, Vacuum & Flashlight)

BATHROOM

- Porcelain Lavvy Sink
- Moen® Lavvy Faucet
- Fan-Tastic® Power Roof Vent
- Make-Up Lights
- Molded Tub/Shower Enclosure
- Porcelain Toilet w/Water Saver
- Skylight in Tub/Shower
- Toilet Tank San-T-Flush™ System
- Vinyl Flooring

SAFETY/CONVENIENCE

- Carbon Monoxide Detector/Alarm
- Child Safety Tether
- New 30" Wide Entry Door
- Entry Assist Handle
- Multiple Seatbelt Locations
- Propane Detector/Alarm
- Smoke Detector/Alarm
- 10 ABC Fire Extinguisher

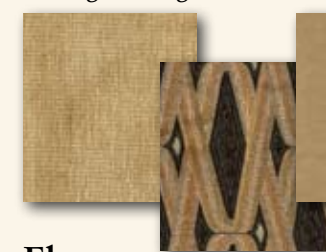
EXTERIOR THROUGHTOUT

- 120V/12V AC/DC Converter Central Electrical Panel
- 4 Graphic Color Choices
- 3 Way Water Pump Switch
- 5.5 kW Onan® MicroQuiet Generator
- 50 Amp Service
- Aluminum Tube Front Grill
- Awning Rail/Drip Molding (Both Sides)
- Dual Pane Windows w/Screens
- Dual Patio Receptacles
- Fiberglass Front/Rear Caps
- Full-Body Paint

INTERIOR DÉCORS

Domino

Living/Dining Room

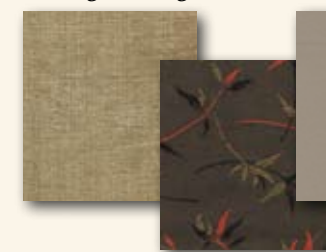


Bedroom

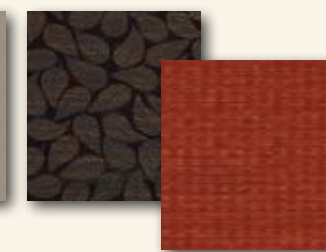


Ebony

Living/Dining Room

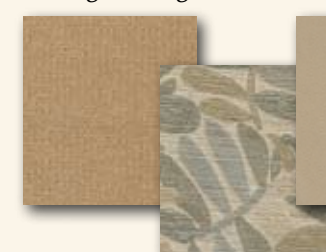


Bedroom



Spa

Living/Dining Room



Bedroom



Wood
Finishes



Symphony Cherry

Bijoux Cherry

FEATURES AND OPTIONS

DRIVER CONVENIENCE

- Auto-Locating Satellite Dish
- CB Radio Ready
- Sirius Satellite Radio® (6 Month Subscription Included)

GALLEY

- 4 Door Dometic® Refrigerator w/Ice Maker*
- Convection Microwave Oven
- Free-Standing Dinette w/Credenza
- Washer/Dryer*

LIVING ROOM

- Super Lounge/Dinette*
- Leather Euro Recliner w/Ottoman*
- Soft Touch Hide-A-Bed w/Air Mattress*
- Soft Touch Hide-A-Bed w/Air Mattress/ Footrest*
- Ultraleather™ Sofa Bed*
- Ultraleather™ Lounge Recliner*

BEDROOM

- Queen Bed Air Mattress
- King Bed*

EXTERIOR

- Side View Camera System
- CSA Package (Canadian Specs)**
- Dual A/C w/Heat Pump w/Solar Panel on Front A/C
- Diamond Shield Clear Front Protective Mask
- Electric Awning Weather Pro*
- Exterior Entertainment Center

AUTOMOTIVE

- Workhorse™ Chassis w/ 8.1L Vortec™ Engine
- Ford® Chassis w/6.8L Triton® V10 Engine

FLEETWOOD ADVANTAGES

- Power Platform® Construction (Fleetwood Exclusive)
- Pass Through Storage
- Contemporary Styling and Decor, Interior and Exterior
- Multiple Floor Plans, Including Unique Full-Wall Slide Plans
- One-Piece Panoramic Windshield
- Up to 6,000 lbs. Towing Capacity†
- Side Swinging Luggage Doors (Select Locations)

* Not all options are available on all floor plans. See your Fleetwood dealer for details.

** CSA standards may require substitution or deletion to achieve conformance.



RV OWNERCARE*

Limited one-year/15,000-mile coach warranty and three-year/50,000-mile structural warranty, whichever occurs first, and it is fully transferable for the first 12 months. RV OWNERCARE is one of the RV industry's most comprehensive programs and includes systems, appliances, components and construction, with no deductible and no service charge. RV OWNERCARE coverage is provided from a company that will be around in the future to service your needs. See your nearest Fleetwood RV dealer for a full explanation of benefits and restrictions.

CONTACT US

To locate a dealer near you, visit our website at www.fleetwoodrv.com or call 1-800-444-4905. We can also be contacted at Fleetwood RV Customer Relations, P.O. Box 1007, Decatur, IN 46733.

FLEETWOOD MOTOR HOME CLUBS

As a Fleetwood owner, you're invited to become a member of several Fleetwood RV motor home clubs. Becoming a club member is the perfect way to meet other Fleetwood owners who love to travel across America and share in the RV lifestyle. Visit our website at www.fleetwoodrv.com/owners_clubs to learn more and join the fun.

YOUR LOCAL FLEETWOOD RV DEALER IS:



*For complete info see your Fleetwood dealer.

©2009. Fleetwood RV, Inc.
Printed in the USA. Inventory Control Number SW10B1, 10/09.
Model Year 2010, First Edition.

IMPORTANT—PLEASE READ

Product information, photography and illustrations included in this publication were as accurate as possible at the time of printing. For further product information and changes, please visit our website at www.fleetwoodrv.com or contact your local Fleetwood RV dealer. Prices, materials, design and specifications are subject to change without notice. All weights, fuel, liquid capacities and dimensions are approximate. Fleetwood RV has designed its recreational vehicles to provide a variety of uses for customers. Each vehicle features optimal seating, sleeping, storage and fluid capacities. The user is responsible for selecting the proper combination of loads (i.e. occupants, equipment, fluids, cargo, etc.) to ensure that the vehicle's capacities are not exceeded.

WHY FLEETWOOD RV?



Quality

There's no cutting corners. Skilled craftsmen build every Fleetwood RV for maximum durability and longevity.



Trust

More people trust Fleetwood RV. After all, we've spent the last 60 years perfecting RVs, earning the loyalty of generations of RVers.



Passion

We're truly passionate about the RV lifestyle. Fleetwood RV was founded by RV enthusiasts, and that tradition continues today.



Safety

You've got precious cargo. So we've engineered dozens of innovative safety features into our motor homes to give you more peace of mind.



Service

Help is nearby. When you need an upgrade or repair, you'll find Fleetwood dealers all across North America ready to assist you.



Warranty

Exclusive RV ownercare warranty. See your Fleetwood RV dealer for details.

