

A MILLION MILES AWAY
IS CLOSER THAN YOU THINK.

Southwind
CLASS A GAS



2009 SOUTHWIND

 FLEETWOOD.

WEEKENDS ARE MEANT FOR LIVING, NOT LAUNDRY.

It's Friday afternoon, and your ticket to adventure is as close as your driveway. Southwind is waiting. With every passing mile, your spirits lift. You have the freedom to roam with the comforts of home. After a day of fishing on the river, you'll enjoy the crystal-clear TV and a spacious bed. The galley holds your favorite snacks behind beautiful cabinetry. When it comes to weekends, Southwind makes those two days worth the other five.

Quality



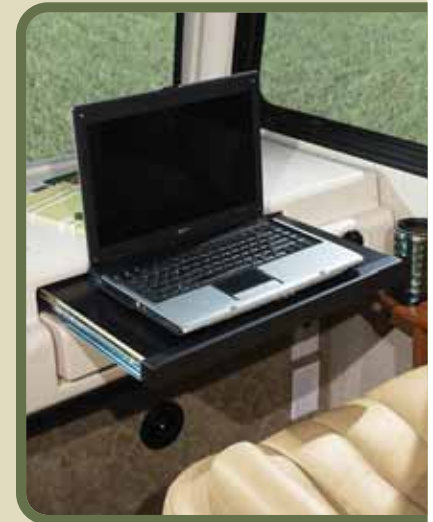
There's no cutting corners. Skilled craftsmen build every Fleetwood RV for maximum durability and longevity.



SOUTHWIND



THE ENTERTAINMENT SYSTEM lets you unwind with a great movie. Enjoy your favorites on a 26" LCD HDTV and DVD player with home theater sound.



THE PASSENGER-SIDE DASH lets you get away from the office but still get some work done. Your laptop fits perfectly on the slide-out desk, with 12V, 120V and telephone outlets. The drawer holds your supplies, and the cup holders keep your coffee at your side.

Why Buy Southwind?





SOUTHWIND 36D shown in Domino interior décor with Symphony Cherry wood cabinetry.

Contemporary Styling

With its clean, modern style, Southwind's interior is spacious, comfortable, and feels like home.

Full-Body Paint

Southwind projects a high-quality image with dazzling, full-body paint, and striking exterior graphics.

Entertainment Centers

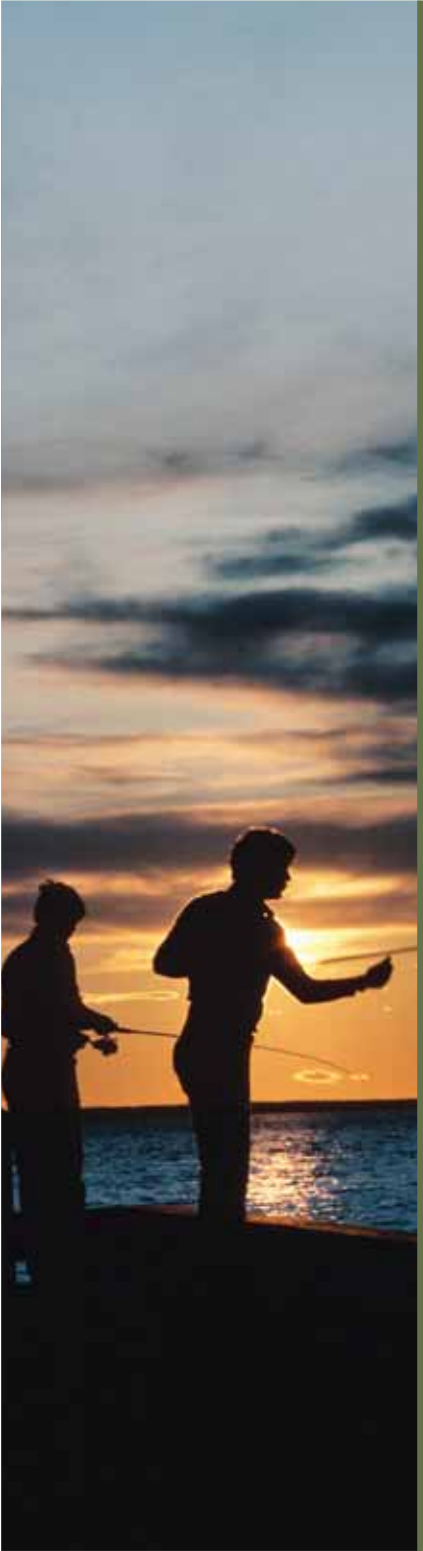
With big, LCD HDTVs in both the living room and the bedroom, your entertainment options are as wide open as the road.

Comfort and Convenience

Camping in Southwind doesn't mean roughing it. You'll enjoy comfortable furniture, brand name appliances and high-end components.

Power Platform® Construction

Fleetwood's patented platform is not only super-strong, it provides an amazing amount of storage, including pass-through storage on select models.



NO MATTER HOW FAR YOU GO, YOU'LL NEVER LOSE YOUR SENSE OF STYLE.

If you're particular when it comes to style, Southwind is designed for you. The furniture, color palette and finishes all work together to create a tone that's understated, contemporary and informal at the same time. In the galley, the wood-look laminate flooring and brushed nickel hardware provide that decorator touch. Southwind also includes some hidden delights, such as whole-coach water filtration to deliver clean, dependable drinking water wherever you are.

Trust



More people trust Fleetwood. After all, we've spent over 50 years perfecting RVs, earning the loyalty of generations of RVers.



SOUTHWIND



THE DINETTE provides spacious seating for four, and a view that can change with the menu. The large picture window lets you enjoy the scenery to the fullest. After sunset, you can make the space into a comfortable extra bed.



FULLY EXTENDING
DRAWERS allow you
to store things in the
very back. No storage
space is wasted.



THE GALLEY is the place to cook up those freshly caught trout on the three-burner stove — you'll appreciate the Fan-Tastic® roof fan that circulates the air. For faster cooking, try the optional GE® convection microwave.



THE SINK gleams with its stainless steel finish and chrome faucet. When it's time for dishes, you'll appreciate the deep double bowls and the easy-to-adjust single lever on the faucet. The easy-to-clean, solid surface countertops have matching sink covers to give you extra counter space.



THE CABINETRY is beautiful on the outside, but the inside offers some nice surprises too. For example, the adjustable shelves are large enough to store full-size plates, and lined to protect your dishes in transit.

THE REFRIGERATOR offers cold lemonade after a day of hiking. With 8 cu. feet of cold food storage, the Dometic® refrigerator is a luxury you can't do without. For added convenience, upgrade to the optional Dometic® (select models) or Norcold® 4-door refrigerator (shown) with icemaker. They're also 50% larger, providing 12 cubic feet of space.





RELAX. REVIVE. RECHARGE. REPEAT AS NEEDED.

Whether it's an extended weekend or a week long vacation, relaxation is easy in Southwind, full of the stylish comforts of home. The room you may appreciate most is the bedroom suite, especially the clean, private bath. Step into the roomy shower with its marbleized walls, and enjoy a hot morning shower under the skylight. For ultimate convenience, there's even a standard accessory package that includes a handheld vacuum, rechargeable flashlight and wall-mounted hair dryer.

Passion



We're truly passionate about the RV lifestyle. Fleetwood was founded by RV enthusiasts, and that tradition continues today.



SOUTHWIND



THE BATHROOM is a cut above the rest, with a Moen® faucet and attractive bow-front sink that's especially handy for shaving. The roomy medicine cabinet offers ample space for make-up, and the oversized mirror lets you check your look.



THE CEDAR-LINED WARDROBE holds full-size hangers so your shirts stay free from wrinkles. Below, fully extending drawers provide easy access to items at the very back.



THE BEDROOM SUITE feels as good as it looks. The luxurious Restonic® mattress is queen-size with a pillowtop and innersprings. For even more comfort, upgrade to an air mattress that lets you customize each side separately.



THE WASHER/DRYER (optional on select models) takes care of that red wine stain before it sets. And you can save your quarters, too.



THE BEDROOM ENTERTAINMENT CENTER includes a large LCD HDTV. Because vacation means never having to say, you're sorry for watching TV in bed.

DON'T WORRY, IT JUST LOOKS LIKE A MILLION BUCKS.

Southwind projects an undeniably upscale look thanks to its contemporary graphics and full-body paint. We carefully apply DuPont® paint in a two-step process for maximum durability and a high-gloss finish. And to preserve the beauty even longer, opt for Diamond Shield, a clear, 8 mil. urethane film protects your paint finish on the lower front cap. Which color suits you best?

SOUTHWIND EXTERIORS

BLUE TOPAZ
Scheme 2*



CAFE MILAN
Scheme 2*



CHAMPAGNE STAR
Scheme 2*



FIRE STORM
Scheme 2*



SATIN STEEL
Scheme 2*



WHITE SHADOW
Scheme 2*



SATIN STEEL
Scheme 1*



* Each color is available in both Scheme 1 and Scheme 2 graphics. See your Fleetwood dealer or visit our website at www.fleetwoodrv.com to view all graphic and color choices.



SOUTHWIND

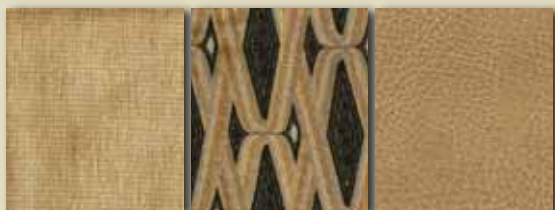
DECORATORS' CHALLENGE.

Our interior designers get to stretch their talents when it comes to Southwind, bypassing the ordinary to choose distinctive fabrics in superior grades. Now, it's your turn to choose which palette you like best.

INTERIOR DÉCORS

DOMINO

Living/Dining Room

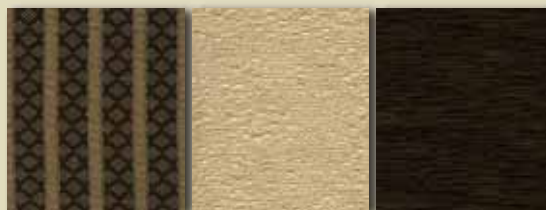


Sofa

Dinette Cushions

Ultraleather™
Driver and Front
Passenger Seats,
Sofa (optional)

Bedroom



Bedsread &
Headboard

Accent Fabric

Throw Pillows

EBONY

Living/Dining Room

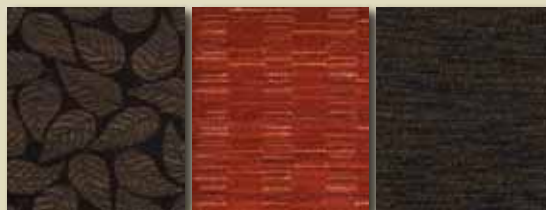


Sofa

Dinette Cushions

Ultraleather™
Driver and Front
Passenger Seats,
Sofa (optional)

Bedroom



Bedsread &
Headboard

Accent Fabric

Throw Pillows

SPA

Living/Dining Room

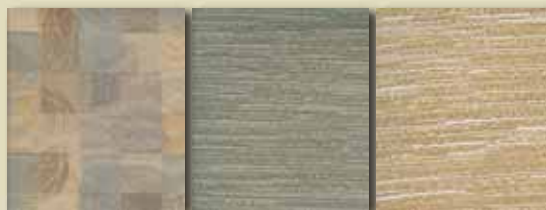


Sofa

Dinette Cushions

Ultraleather™
Driver and Front
Passenger Seats,
Sofa (optional)

Bedroom



Bedsread &
Headboard

Accent Fabric

Throw Pillows

WOOD FINISHES



Symphony Cherry



Plantation Cherry

ITS BEAUTY IS MORE THAN SKIN DEEP.

While Southwind is undeniably attractive, its real beauty lies in its engineering and construction. Fleetwood has been a respected industry leader for more than 55 years, and we put everything we've learned into Southwind to make it one of the best-built motor homes on the road. To top it off, Southwind is backed by one of the most comprehensive warranties available.

- 1 THE PATIO AWNING provides an instant front porch and protection from the sun.
- 2 ONE-PIECE PANORAMIC WINDSHIELD gives you an unobstructed view of the road and scenery.
- 3 22.5" WHEELS provide a smooth ride and look good doing it.
- 4 TUFF-PLY ROOF doesn't scratch like competitors' fiberglass and is quieter in the rain.

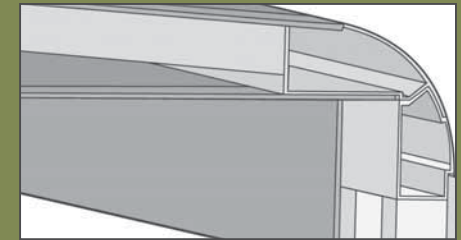


Vehicle shown in White Shadow Scheme 2 exterior graphics.

- 5 HYDRAULIC AUTOMATIC LEVELING JACKS level the coach at the touch of a button.
- 6 DUAL A/C UNITS keep you cool inside, and the roof mounting creates extra storage space in the basement.
- 7 LIGHTED STORAGE COMPARTMENTS have side swinging luggage doors on select locations.
- 8 THE UTILITY COMPARTMENT provides a central place to empty your holding tanks and a sprayer for quick clean up.



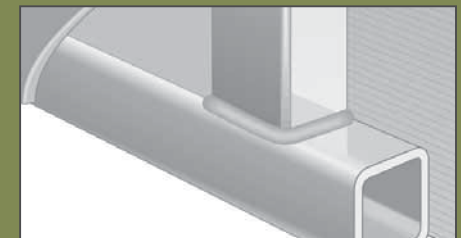
Vehicle shown in White Shadow Scheme 2 exterior graphics.



INTERLOCKING CEILING-TO-SIDEWALL CONSTRUCTION helps keep the box square. This assures a proper cabinet fit.



INTERLOCKING FLOOR-TO-SIDEWALL CONSTRUCTION locks tightly to keep out water, dust and noise, and helps eliminate squeaks and rattles.



VACU-BOND® SIDEWALL CONSTRUCTION creates a strong, weather-resistant structure. The sidewalls, floor and ceiling are Vacu-bonded to a durable metal frame, far superior to the pinch roll method our competitors often use.



SOUTHWIND

PEACE OF MIND INCLUDED, STANDARD.

Fleetwood engineers have built dozens of safety features into Southwind to keep your family safe. Of course, we've included 3-point seat belts for the driver and passenger, safety-belted seating locations inside for other passengers, and a child seat safety tether. A few other notable safety features include hydraulic powered disc brakes with ABS, and leveling jacks that automatically retract if the drive gear is engaged.

Safety



You've got precious cargo. So we've engineered dozens of innovative safety features into our motor homes to give you more peace of mind.

THE COCKPIT wraps around you with its ergonomic design, as do the plush Ultraleather™ driver and passenger seats. New for 2009, the iPod docking station lets you control your music selection through the audio system.

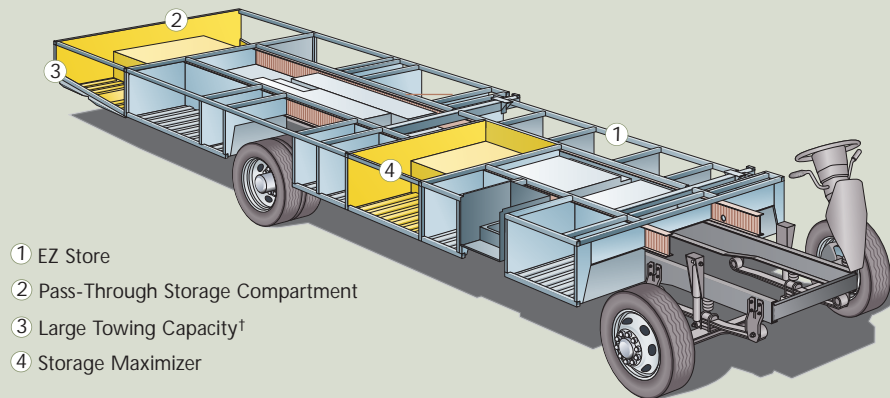


THE STORAGE MAXIMIZER does exactly that – gives you maximum storage. It's the perfect place for bulky items.



POWER PLATFORM®. BUILT FOR STRENGTH, STABILITY AND PASS-THROUGH STORAGE.

Fleetwood's patented Power Platform® is the envy of our competitors. The ultra-strong chassis provides enormous storage space, lined with molded plastic for easy cleaning and lit to help you see after dark. The holding tanks are positioned in the bottom to enhance balance, and enclosed so they can be heated in cold weather to help prevent freezing.



- ① EZ Store
- ② Pass-Through Storage Compartment
- ③ Large Towing Capacity†
- ④ Storage Maximizer

Drawings are for illustrative purposes only to highlight aspects of motor home construction. Actual motor home design depends on model and is subject to change.

† The chassis manufacturer recommends the installation of a supplemental brake control system to activate the brakes on the vehicle or trailer you are towing. Hitch receiver ratings expressed are maximum for the hitch receiver installed and may require the purchase of additional equipment that is dependent on the weight of the towed load. Consult with hitch receiver manufacturer for further information.

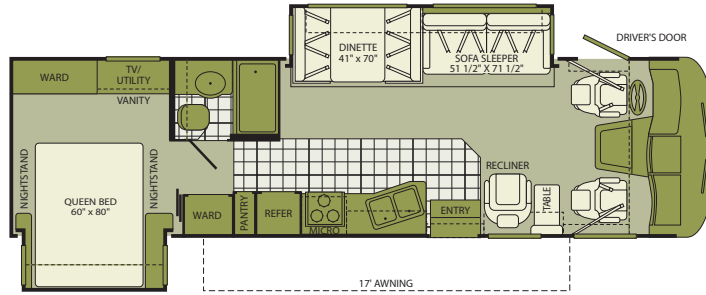


THE EZ STORE COMPARTMENT holds large items like golf equipment, coolers, or even a ladder. It moves with the slide-out so you're not stooping underneath.



PASS THROUGH STORAGE is included on select models. This big space holds chairs, sports gear and more – and you can access it from either side of the coach.

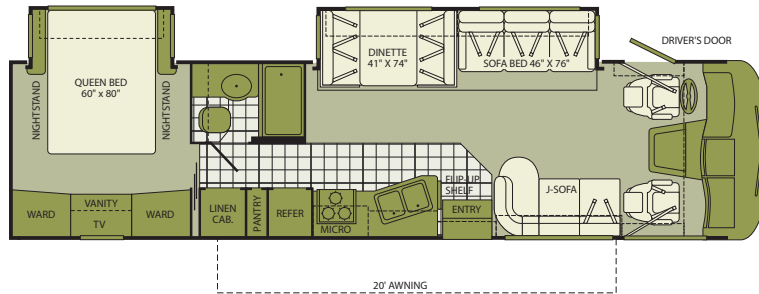
32VS



Interior Storage Capacity: 144 cu. ft.
Exterior Storage Capacity: 112 cu. ft.

- Extremely spacious 32' floor plan
- Desirable sofa and dinette slide-out
- Available Options: 149, 491, 700, 832, 833

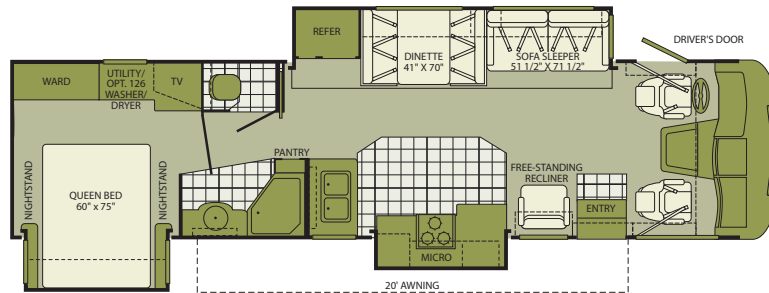
34G



Interior Storage Capacity: 163 cu. ft.
Exterior Storage Capacity: 136 cu. ft.

- Residential-like opposing sofas
- Deep 30" bedroom slide for expansive space
- Available Options: 149, 700, 807, 832, 833, 852

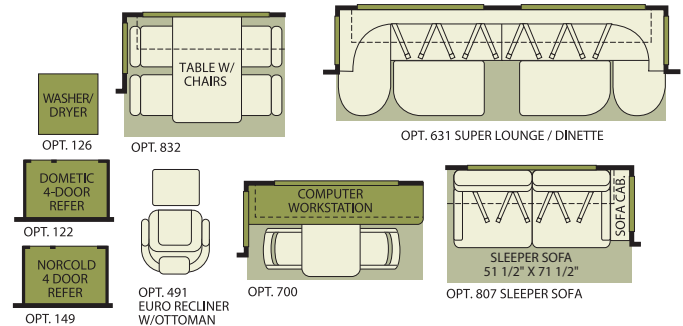
35A



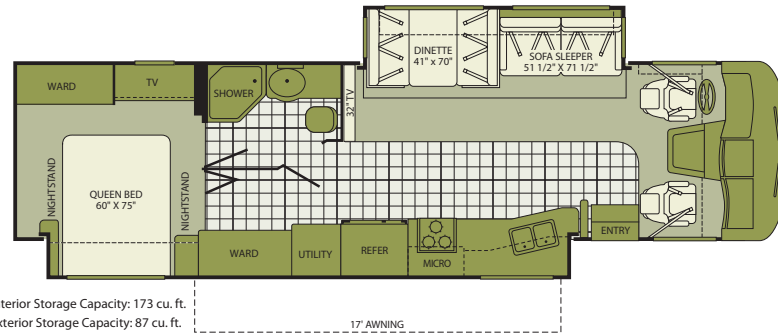
Interior Storage Capacity: 143 cu. ft.
Exterior Storage Capacity: 108 cu. ft.

- Large living and galley area; an entertainer's delight
- Luxurious master suite
- Available Options: 122, 126, 149, 491, 700, 832, 833

OPTIONS

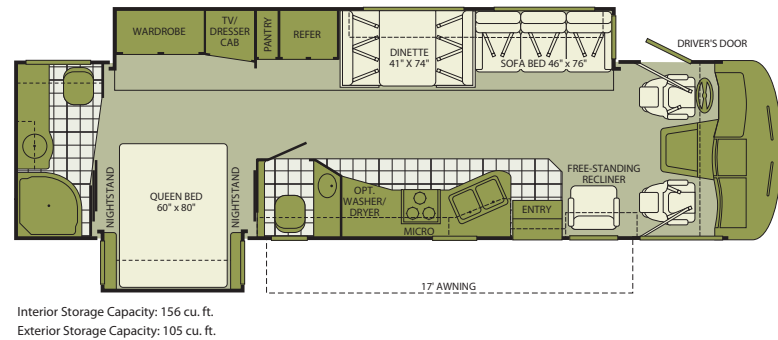


35J



- Industry leading, patio-side full-wall slide for maximum space
- Huge shaded patio with slide-out mounted awning
- 32" mid-coach LCD HDTV
- Available Options: 122, 126, 149, 631, 700, 832, 833, 852

36D



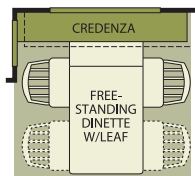
- Industry leading full-wall slide for maximum space
- Bath and a half for residential livability
- Available Options: 122, 126, 149, 491, 700, 807, 832, 833

Seatbelt configuration may vary depending on options chosen.

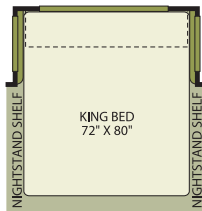
Service



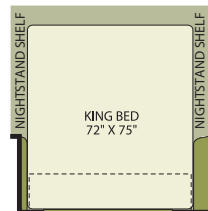
Help is nearby. When you need an upgrade or repair, you'll find Fleetwood dealers all across North America ready to assist you.



OPT. 833
FREE-STANDING DINETTE
WITH CRENZENZA



OPT. 852
KING BED



OPT. 852
KING BED (35J ONLY)



SOUTHWIND

STANDARD FEATURES

INTERIOR Throughout

- 10 Gallon Quick Recovery Water Heater w/Direct Spark Ignition (Gas/Electric)
- 20,000/30,000 Btu Dual Furnaces (35J, 36D)
- 3 Interior Decors
- 34,000 Btu Furnace (32VS, 34G, & 35A)
- Beveled Mirrors
- Plantation Cherry Wood Grain or Symphony Cherry Wood Grain
- Complete TuffPEX Plumbing System
- Deluxe Roller Bearing, Full Extension Drawer Guides & Transit-Ship Locks
- Demand Water Pump w/Filter
- Dual 6V Deep Cycle House Batteries
- Dual Roof A/C High Efficiency w/Solar Panel and Chill Grills
- Telephone Jack In-Dash
- Vinyl Ceiling, Cushioned
- Water Heater Bypass
- Whole Coach Water Filtration System
- 7' Interior Ceiling Height
- Fluorescent Ceiling Lights w/Dual Bulbs & Wood Trim
- DVD Home Theater Sound System

Driver Convenience

- 3 Point Seat Belts at Driver & Front Passenger Seats
- AM/FM Radio w/CD Player, Satellite Radio Ready w/Auxiliary Inputs
- Auto A/C Heater Combo
- Auxiliary Start Circuit
- Computer Workstation In-Dash
- Cruise Control
- Dash Fans
- Power Front Windshield Shade
- Engine Cover Convenience Tray
- Intermittent Wiper Control
- Radio Switch Main/Auxiliary Power
- iPod Docking Station
- Tilt Steering Wheel
- Battery Disconnect System
- Driver/Front Passenger Ultraleather™ Captain's Chairs w/Power Driver Seat
- DSS Manual Lift Satellite Dish
- Driver's Door w/Power Window Lift

Galley

- 1.4 cu.ft. Microwave Oven
- 3 Burner, High Output Range w/Oven
- 8 cu.ft. Dometic® Double Door Refrigerator
- Brushed Nickel Finish Cabinet Hardware
- Double Bowl Stainless Steel Sink
- Fan-Tastic® Power Roof Vent
- Radius Corner Cabinetry
- Range Cover Flush Mount
- Single Lever Moen® Faucet w/Sprayer
- Sink Cover/Cutting Board
- Skylight
- Solid Surface Counter Tops
- Waste Basket
- Slide-Out Dinette Bins w/Latches

Living Room

- 26" or 32" LCD HDTV Dependent on Floor Plan
- Day/Night Pleated Shades
- Free-Standing Lounge Recliner (N/A on 34G, Optional on 35J)
- Residential Seat Styling

Bedroom

- 19" or 26" LCD HDTV Dependent on Floor Plan
- Bedspread w/Decor Pillows
- Headboard
- Pleated Shades
- Rear Speakers
- Restonic® Deluxe Pillow Top Innerspring Mattress
- Dual Pane Torque Windows
- Accessory Package (Hair Dryer, Vacuum & Flashlight)

Bathroom

- Porcelain Lavvy Sink
- Moen® Lavvy Faucet
- Fan-Tastic® Power Roof Vent
- Make-Up Lights
- Molded Tub/Shower Enclosure
- Porcelain Toilet w/Water Saver
- Skylight in Tub/Shower
- Toilet Tank San-T-Flush™ System
- Vinyl Flooring

Safety/Convenience

- Carbon Monoxide Detector/Alarm
- Child Safety Tether
- New 30" Wide Entry Door
- Entry Assist Handle
- Multiple Seatbelt Locations
- Propane Detector/Alarm
- Smoke Detector/Alarm
- 10 ABC Fire Extinguisher

EXTERIOR Throughout

- 120V/12V AC/DC Converter Central Electrical Panel
- 6 Colorways in 2 Graphic Schemes
- 3 Way Water Pump Switch
- 5.5 kW Onan® MicroQuiet Generator
- 50 Amp Service
- Aluminum Tube Front Grill
- Awning Rail/Drip Molding (Both Sides)
- Dual Pane Windows w/Screens
- Dual Patio Receptacles
- Fiberglass Front/Rear Caps
- Full-Body Paint
- Halogen Headlights
- Heated Water & Holding Tank Compartments
- One-Piece Panoramic Windshield
- Mud Flaps
- Park Cable Receptacle
- Patio Awning
- Single Motor Windshield Wipers w/Wet Arm
- Slide Topper Awnings
- Steel Outriggers
- TV Antenna w/Signal Booster
- Molded Front Quarter Panels

Automotive

- 4 Point Hydraulic Automatic Levelers
- Trailer Hitch w/7 Pin Electrical Hook-Up†

Safety/Convenience

- Automotive Safety Glass
- Daytime Running Lights
- Hydraulic 4 Wheel Disk Brakes w/4 Wheel Anti-Lock Brakes
- Large, Heated Remote Rear View Mirrors
- Porch Light (Doorside)
- Power Entry Step
- Color LCD Rear Vision Camera w/One-Way Audio
- Roof Ladder
- Underhood Utility Lights
- Utility Compartment w/Exterior Shower
- Winterizing Pick-Up Tube
- Lighted Entry Assist Handle

Storage

- Continuous One-Piece Compartment Bulb Seal
- Gas Lift Strut Supports (Select Locations)
- Side Swinging Luggage Doors (Select Locations)
- Lighted Luggage Compartments
- Pass Through Storage (Select Models)
- Rotomolded Polyethylene Luggage Compartments

Body Structure

- Aluminum Interlocking Floor/Wall/Ceiling Framing
- Basement Floor Configuration
- Power Platform® Construction (Fleetwood Exclusive)
- Royal Tuff-Ply Radius Roof w/Ducted A/C
- Vacu-bond® Upper/Lower Floors
- Vacu-bond® Walls w/Smooth, High Gloss Tuff-Coat® Exterior Fiberglass

OPTIONS

INTERIOR

- Neutral Loss Protection
- 1200 Watt Inverter

Driver Convenience

- Auto-Locating Satellite Dish
- CB Radio Ready
- Sirius Satellite Radio® (6 Month Subscription Included)

Galley

- 4 Door Dometic® Refrigerator w/Ice Maker*
- 4 Door Norcold® Refrigerator w/Ice Maker
- Convection Microwave Oven
- Dinette Table w/Free-Standing Chairs
- Dinette/Computer Workstation
- Free-Standing Dinette w/Credenza
- Washer/Dryer*

Living Room

- Super Lounge/Dinette*
- Hide-A-Bed Sofa*
- Leather Euro Recliner w/Ottoman*

- Sofa w/Footrest*
- Ultraleather™ Sofa Bed*
- Ultraleather™ Hide-A-Bed*
- Ultraleather™ Lounge Recliner*
- Ultraleather™ Sofa w/Footrest*

Bedroom

- King Bed Air Mattress*
- Queen Bed Air Mattress

EXTERIOR

- Side View Camera System
- CSA Package (Canadian Specs)**
- Dual A/C w/Heat Pump w/Solar Panel on Front A/C
- Diamond Shield Clear Front Protective Mask
- Electric Awning Weather Pro (32VS, 34G, 36D & 35J)
- Exterior Entertainment Center

Automotive

- Workhorse™ Chassis w/ 8.1L Vortec™ Engine
- Ford® Chassis w/6.8L Triton® V10 Engine

FLEETWOOD ADVANTAGES

- Power Platform® Construction (Fleetwood Exclusive)
- Pass Through Storage
- Contemporary Styling and Decor, Interior and Exterior
- Multiple Floor Plans, Including Unique Full-Wall Slide Plans
- One-Piece Panoramic Windshield
- Up to 6,000 lbs. Towing Capacity†
- Side Swinging Luggage Doors (Select Locations)

* Not all options are available on all floor plans. See your Fleetwood dealer for details.

** CSA standards may require substitution or deletion to achieve conformance.

WEIGHTS AND MEASUREMENTS

FORD® CHASSIS / WORKHORSE™ CHASSIS

MODELS	32VS	34G	35A	35J	36D
Engine Displacement (Liters)	6.8/8.1	6.8/8.1	6.8/8.1	6.8/8.1	6.8/8.1
Wheelbase (Inches)	208"	228"	228"	228"	228"
GVWR (lbs) ¹	22,000	22,000	22,000/24,000	22,000	22,000/24,000
Front GAWR (lbs) ²	7,500	7,500	7,500/9,000	7,500	7,500/9,000
Rear GAWR (lbs) ²	14,500	14,500	14,500/15,500	14,500	14,500/15,500
GCWR (lbs) ³	26,000	26,000	26,000/30,000	26,000	26,000/30,000
Hitch Rating Weight (lbs) ⁴	5,000	5,000	5,000/6,000	5,000	5,000/6,000
Tongue Weight (lbs) ⁴	500	500	500/600	500	500/600
Fuel Capacity (gal)	75	75	75	75	75

DIMENSIONS & CAPACITIES

MODELS	32VS	34G	35A	35J	36D
Overall Length ⁴	33' 5"	35' 11"	36' 5"	36' 11"	36' 5"
Overall Height (with A/C)	12' 10"	12' 10"	12' 10"	12' 10"	12' 10"
Overall Width (maximum) ^{5, 6}	102"	102"	102"	102"	102"
Interior Height (maximum)	84"	84"	84"	84"	84"
Interior Width (maximum)	96"	96"	96"	96"	96"
Fresh Water Holding Tank (gal)	80	85	80	85	80
Grey Water Holding Tank (gal)	58	58	58	58	58
Black Water Holding Tank (gal)	42	42	42	42	42
Appliance Propane Tank (gal) (WC) ⁷	25	25	25	25	25
Water Heater Tank (gal)	10	10	10	10	10

Liquid Weight Reference: Water (gal) = (8.3 lbs/3.8 kgs) Fuel (gal) = (6.1 lbs/2.8 kgs) Propane (gal) = (4.2 lbs/1.9 kgs)

Metric Conversion: Multiply pounds x 0.453 to obtain kilograms. Multiply gallons x 3.785 to obtain liters. Multiply liters x 61 to obtain cubic inches.

CHASSIS

Model: Ford®/Workhorse™

Engine: 6.8L Triton V10/8.1L Vortec™ V8

Horsepower: 362HP/340HP

Torque: 457 lb-ft @ 3250 RPM/455 lb-ft @ 3200 RPM

Alternator: 130 Amp/145 Amp

Transmission: Ford®, 5-Speed Automatic w/Overdrive
Workhorse™, 6-Speed Automatic w/Overdrive

Warranty



Exclusive RV ownercare warranty.
See your Fleetwood dealer for details.



CLASS A GAS

- GVWR (Gross Vehicle Weight Rating) is the maximum permissible weight of this fully loaded motor home. The GVWR is equal to or greater than the sum of the (UVW) unloaded vehicle weight plus (OCCC) occupant and cargo carrying capacity[†].
- GAWR (Gross Axle Weight Rating) is the maximum permissible loaded weight a specific axle is designed to carry.
- GCWR (Gross Combined Weight Rating) is the value specified by the motor home manufacturer as the maximum allowable loaded weight of this motor home with its towed vehicle. Towing and braking capacities may be different. Refer to Fleetwood and chassis manufacturer's manuals for complete information.
- Length is measured from front bumper to rear bumper (excludes accessories).
- Excludes safety equipment and awnings.
- Motor homes feature a body-width over 96" which will restrict your access to certain roads. Before purchasing, you should research any state and/or province road laws which may affect your usage.
- Tank manufacturer's listed water capacity (WC). Actual propane capacity is 80% of water listing as required by the safety code.

[†] The chassis manufacturer recommends the installation of a supplemental brake control system to activate the brakes on the vehicle or trailer you are towing. Hitch receiver ratings expressed are maximum for the hitch receiver installed and may require the purchase of additional equipment that is dependent on the weight of the towed load. Consult with hitch receiver manufacturer for further information.

N/A = Not available at time of printing.

*UVW and OCCC are found on the label containing the federal certification tag in each RV.

IMPORTANT—PLEASE READ: Product information, photography and illustrations included in this publication were as accurate as possible at the time of printing. For further product information and changes, please visit our website at www.fleetwoodrv.com or contact your local Fleetwood dealer. Prices, materials, design and specifications are subject to change without notice. All weights, fuel, liquid capacities and dimensions are approximate. Fleetwood has designed its recreational vehicles to provide a variety of uses for its customers. Each vehicle features optimal seating, sleeping, storage and fluid capacities. The user is responsible for selecting the proper combination of loads (i.e. occupants, equipment, fluids, cargo, etc.) to ensure that the vehicle's capacities are not exceeded.



RV OWNERCARE*

Limited one-year/15,000-mile coach warranty and three-year/50,000-mile structural warranty, whichever occurs first, and it is fully transferable for the first 12 months. RV OWNERCARE is one of the RV industry's most comprehensive programs and includes systems, appliances, components and construction, with no deductible and no service charge. RV OWNERCARE coverage is provided from a company that will be around in the future to service your needs. See your nearest Fleetwood dealer for a full explanation of benefits and restrictions.

CONTACT US

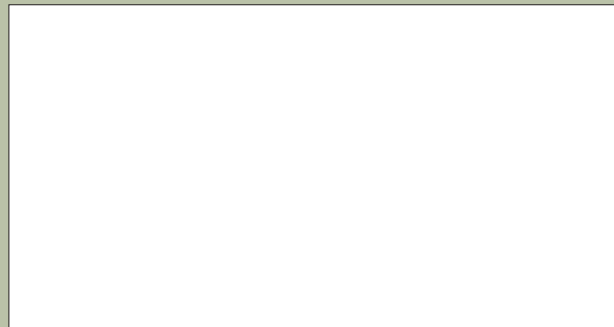
To locate a dealer near you, visit our website at www.fleetwoodrv.com or call 1-800-444-4905. We can also be contacted at Fleetwood Customer Relations, P.O. Box 1007, Decatur, IN 46733.

FLEETWOOD MOTOR HOME CLUBS

As a Fleetwood owner, you're invited to become a member of several Fleetwood motor home clubs. Becoming a club member is the perfect way to meet other Fleetwood owners who love to travel across America and share in the RV lifestyle. Visit our website at www.fleetwoodrv.com/owners_clubs to learn more and join the fun.



YOUR LOCAL FLEETWOOD DEALER IS:



*For complete info see your Fleetwood dealer.

©2008. Fleetwood Enterprises, Inc.
Printed in the USA. Inventory Control Number SW09B1, 9/08.
Model Year 2009, First Edition.

IMPORTANT—PLEASE READ

Product information, photography and illustrations included in this publication were as accurate as possible at the time of printing. For further product information and changes, please visit our website at www.fleetwoodrv.com or contact your local Fleetwood dealer. Prices, materials, design and specifications are subject to change without notice. All weights, fuel, liquid capacities and dimensions are approximate. Fleetwood has designed its recreational vehicles to provide a variety of uses for customers. Each vehicle features optimal seating, sleeping, storage and fluid capacities. The user is responsible for selecting the proper combination of loads (i.e. occupants, equipment, fluids, cargo, etc.) to ensure that the vehicles capacities are not exceeded.

WHY FLEETWOOD?



Quality

There's no cutting corners. Skilled craftsmen build every Fleetwood RV for maximum durability and longevity.



Trust

More people trust Fleetwood. After all, we've spent over 50 years perfecting RVs, earning the loyalty of generations of RVers.



Passion

We're truly passionate about the RV lifestyle. Fleetwood was founded by RV enthusiasts, and that tradition continues today.



Safety

You've got precious cargo. So we've engineered dozens of innovative safety features into our motor homes to give you more peace of mind.



Service

Help is nearby. When you need an upgrade or repair, you'll find Fleetwood dealers all across North America ready to assist you.



Warranty

Exclusive RV ownercare warranty. See your Fleetwood dealer for details.

