

STORM®

STORM®



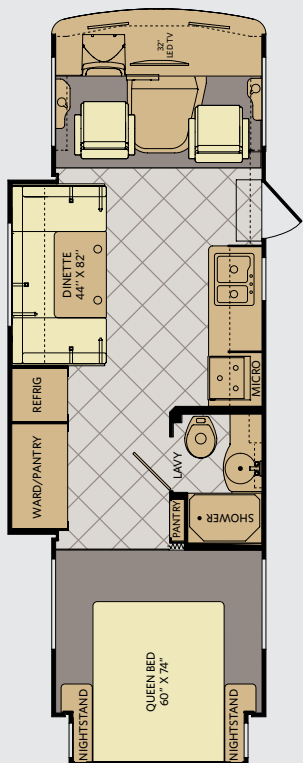
2015

CLASS A GAS



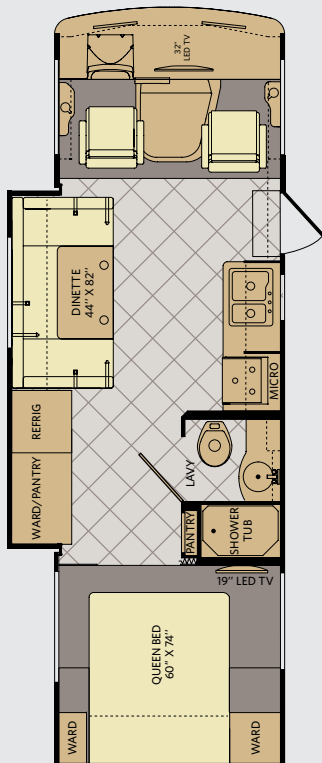
 FLEETWOOD RV

Storm Floor Plans



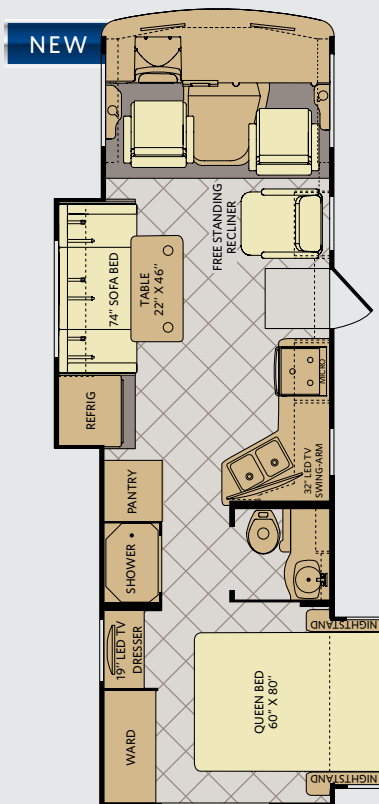
28F

Available options:
084, 093, 218, 351



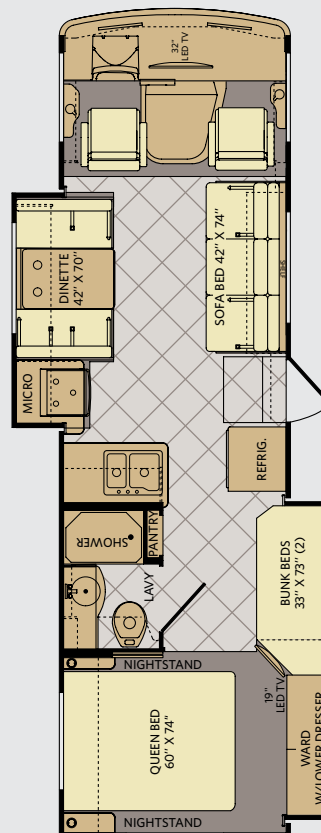
28MS

Available options:
084, 093, 218, 351



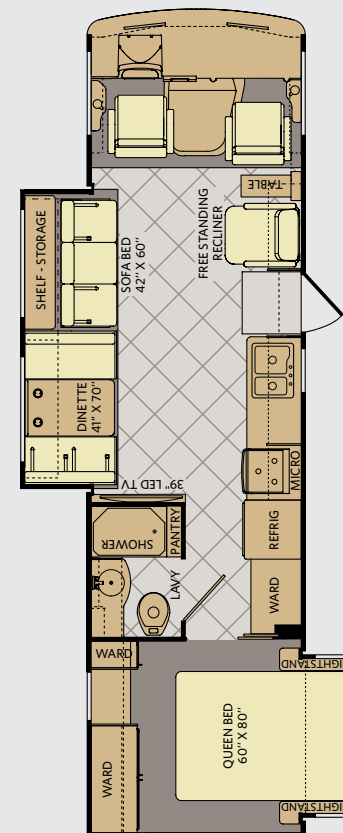
30L

Available options:
084, 093, 217, 830



32H

Available options:
084, 093, 097, 157, 218,
351, 860/864



32V

Available options:
084, 093, 217

BLUSHING BRONZE

SOFA	ACCENT	BEDSPREAD	COUNTERTOP	FLOORING	CARPET

PLATINUM ONYX

SOFA	ACCENT	BEDSPREAD	COUNTERTOP	FLOORING	CARPET

CABINETRY

BUTTERNUT	CINNABAR	SPICE



BLUSHING BRONZE



PLATINUM ONYX

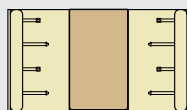
FLOOR PLAN OPTIONS

OPT. 084
BEDROOM
19" LED TV

OPT. 093
EXTERIOR
ENTERTAINMENT
CENTER

OPT. 097
BUNK AREA
19" LED TV

OPT. 157
DUAL
PANEL TV'S

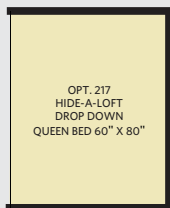


OPT. 830
FACING DINETTE

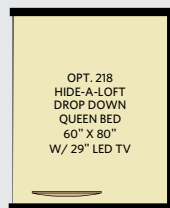


OPT. 860/864
DINETTE W/ SWING DOWN BUNK
30" X 70" DINETTE / 28" X 70" BUNK

OPT. 351
32" LED TV
W/HOME
THEATER SYSTEM



OPT. 217
HIDE-A-LOFT
DROP DOWN
QUEEN BED 60" X 80"



OPT. 218
HIDE-A-LOFT
DROP DOWN
QUEEN BED
60" X 80"
W/ 29" LED TV

ADDENDUMS

- GVWR (Gross Vehicle Weight Rating) is the maximum permissible weight of this fully loaded motor home. The GVWR is equal to or greater than the sum of the (UVW) unloaded vehicle weight plus the (OCCC) occupant cargo-carrying capacity.
- GAWR (Gross Axle Weight Rating) is the maximum permissible loaded weight a specific axle is designed to carry.
- GCWR (Gross Combined Weight Rating) is the value specified by the motor home manufacturer as the maximum allowable loaded weight of this motor home with its towed vehicle. Towing and braking capacities may be different. Refer to Fleetwood and chassis manufacturer's manuals for complete information.
- Length measured from front bumper to rear bumper (excludes accessories).
- Excludes safety equipment and awnings.
- Motor homes feature a body width over 96" which will restrict your access to certain roads. Before purchasing, you should research any state and/or province road laws which may affect your usage.

- Tank manufacturer's listed water capacity (WC). Actual propane capacity is 80% of water listing as required by the safety code.

† The chassis manufacturer recommends the installation of a supplemental brake control system to activate the brakes on the vehicle or trailer you are towing. Hitch receiver ratings expressed are maximum for the hitch receiver installed and may require the purchase of additional equipment that is dependent on the weight of the towed load. Consult with hitch receiver manufacturer for further information.

†† Minimum Towable Load is the available weight, up to GCWR, when the coach is fully loaded to maximum GVWR, that extra available weight can be added to your Towable load. For example, if your coach is loaded to 1000lbs less than maximum GVWR, your Towable Load increases accordingly.

* UVW and OCCC are found on the label containing the federal certification tag in each RV.

CHASSIS

MODELS	28F	28MS	30L	32H	32V
Engine Displacement (liters)	6.8	6.8	6.8	6.8	6.8
Wheelbase (inches)	178"	178"	178"	190"	208"
GVWR (lbs) ¹	18,000	18,000	18,000	18,000	18,000
Front GAWR (lbs) ²	7,000	7,000	7,000	7,000	7,000
Rear GAWR (lbs) ²	12,000	12,000	12,000	12,000	12,000
GCWR (lbs) ³	23,000	23,000	23,000	23,000	23,000
Hitch Rating Weight (lbs) [†]	5,000	5,000	5,000	5,000	5,000
Tongue Weight (lbs) [*]	500	500	500	500	500
Fuel Capacity (gal)	80	80	80	80	80

FORD® CHASSIS

Model: Ford®

Engine: 6.8L Triton V10

Transmission: Ford® 5-Speed,
Automatic w/Overdrive

Alternator: 175 Amp

Torque: 457 lb-ft @3,250 RPM

Horsepower: 362HP

DIMENSIONS & CAPACITIES

MODELS	28F	28MS	30L	32H	32V
Overall Length (inches) ⁴	28' 8"	28' 8"	29' 11"	31'	32' 9"
Overall Height (with A/C)	12'	12'	12'	12'	12'
Overall Width (maximum) ^{5, 6}	102"	102"	102"	102"	102"
Interior Height (maximum)	82"	82"	82"	82"	82"
Interior Width (maximum)	96"	96"	96"	96"	96"
Patio Awning Width	14'	18'	14'	10'	18'
Interior Storage Capacity CU. FT.	110	125	132	116	128
Exterior Storage Capacity CU. FT.	132	132	185	104	192
Fresh Water Holding Tank (gal)	60	60	60	60	60
Grey Water Holding Tank (gal)	35	35	35	35	37
Black Water Holding Tank (gal)	35	35	35	35	37
Appliance Propane Tank (gal) (WC) ⁷	14	14	14	14	14
Water Heater Tank (gal)	6	6	6	6	6



WHY FLEETWOOD?



Quality

There's no cutting corners. Skilled craftsmen build every Fleetwood RV for maximum durability and longevity.



Trust

More people trust Fleetwood RV. After all, we've spent over 60 years perfecting RVs, earning the loyalty of generations of RVers.



Passion

We're truly passionate about the RV lifestyle. Fleetwood RV was founded by RV enthusiasts, and that tradition continues today.



Safety

You've got precious cargo. So we've engineered dozens of innovative safety features into our motor homes to give you more peace of mind.



Service

Help is nearby with 24/7 emergency Fleetwood RV Trusted Roadside Assistance.* And when you need an upgrade or repair, you'll find Fleetwood RV dealers all across North America ready to assist you.



Warranty

Enjoy your RV adventure with the peace of mind that comes with our trusted RV OwnerCare warranty and industry leading customer service.

*All 2015 Fleetwood RV motor homes include a 1-year emergency roadside assistance membership.

**For complete info, see your Fleetwood RV dealer.



Visit FleetwoodRV.com or find Fleetwood RV tablet apps in the App Store and Google Play.

RV OWNERCARE**

Limited one-year/15,000-mile coach warranty and three-year/45,000-mile structural warranty, whichever occurs first, and it is fully transferable for the first 12 months. RV OWNERCARE is one of the RV industry's most comprehensive programs and includes systems, appliances, components and construction, with no deductible and no service charge. RV OWNERCARE coverage is provided by a company that will be around in the future to service your needs. See your nearest Fleetwood RV dealer for a full explanation of benefits and restrictions.

CONTACT US

To locate a dealer near you, visit our website at www.fleetwoodrv.com or call 1-800-322-8216. We can also be contacted at Fleetwood RV Customer Relations, P.O. Box 1007, Decatur, IN 46733.

FLEETWOOD RV MOTOR HOME CLUBS

As a Fleetwood RV owner, you're invited to become a member of several Fleetwood Motor Home Association (FMA). Becoming a club member is the perfect way to meet other Fleetwood owners who love to travel across America and share in the RV lifestyle. Visit our website at www.fma4fun.org to learn more and join the fun.

IMPORTANT—PLEASE READ: Product information, photography and illustrations included in this publication were as accurate as possible at the time of printing. For further product information and changes, please visit our website at www.fleetwoodrv.com or contact your local Fleetwood RV dealer. Prices, materials, design and specifications are subject to change without notice. All weights, fuel, liquid capacities and dimensions are approximate. Fleetwood RV has designed its recreational vehicles to provide a variety of uses for its customers. Each vehicle features optimal seating, sleeping, storage and fluid capacities. The user is responsible for selecting the proper combination of loads (i.e., occupants, equipment, fluids, cargo, etc.) to ensure that the vehicle's capacities are not exceeded.

YOUR LOCAL FLEETWOOD RV DEALER IS:

©2014. Allied Recreation Group Inc.

Printed in the USA. Inventory Control Number ST15B4, 11/14.

Model Year 2015, Forth Edition.

