

Sun Voyager

2004 MOTORHOMES

GULF STREAM
COACH, INC.

GAS MODEL CLASS A



Luxurious Travel with Friends and Family

Sun Voyager Beautiful and Versatile



SPACIOUS LIVING ROOM • MODEL 8368

Gulf Stream offers a comprehensive list of interior appointments, not offered by other manufacturers. What was once available in only "high-end" motorhomes is now available in the *Sun Voyager*.

Gulf Stream Coach makes luxury affordable by offering standards and features you would expect only from a coach costing thousands more. This is easily seen by our "Brass & Glass" interior accents, that has raised the standard of light fixtures and mirrors for all motorhomes. Gulf Stream has also partnered with Flexsteel® to bring you the highest level of quality and durability in our residential style furniture.

You will appreciate our attention to the details seen in the Amish-crafted solid hardwood cabinetry. We feature residential style hardwood cabinet stiles, raised panel cabinet doors and large overhead and base cabinet storage. *Sun Voyager's* extra living space is not sacrificed for the roomy storage.

The *Sun Voyager* features a wide variety of floorplans with spacious heavy-duty slide-out rooms. One of the creative designs are sure to meet the needs of you and your family for years to come. You will love the *Sun Voyager* Class A Motorhome... it is beautiful, versatile and a high-value coach.



**TWO-TONE
HARDWARE**



RESIDENTIAL STYLE CABINETS

Our residential style cabinets are constructed with solid hardwood stiles and doors. This brings both structural integrity and beauty to your living environment.

Living Accommodations...



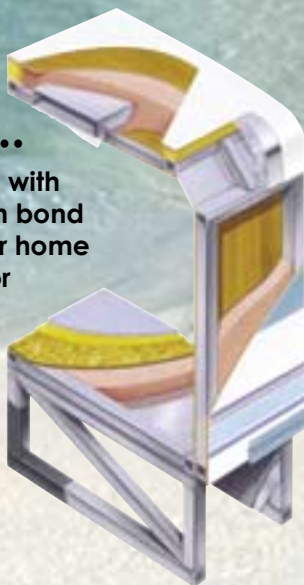
KITCHEN W/DISHWASHER

GALLEY CONVENIENCE...

Our wide-open galley offers all the comforts of your kitchen at home. With Corian™ countertops; deep solid surface sink; 3-burner high performance range; 2-door, 2-way refrigerator and large microwave oven, you will be able to prepare any of your family favorite meals.

DURABLE CONSTRUCTION...

Sun Voyager's construction begins with a seamless fiberglass roof, vacuum bond laminated 2" sidewalls to give your home the very best rigidity. The sub-floor features steel construction with a combination of tubular steel and strong steel trusses. All are fully (High-Density Block Foam) insulated to maximize the insulating value.



DRIVER COMFORT...

The Sun Voyager's cockpit is ergonomically designed to bring the controls to the driver's fingertips. Large easy to read gauges and luxurious seating will make your driving time more comfortable. The wrap-around windshield improves your visibility and sightseeing



COMFORTABLY DESIGNED COCKPIT



SPACIOUS PASS-THROUGH STORAGE

EXTERIOR STORAGE...

There is plenty of exterior storage room for your travel needs as well. The basement storage compartments are formed of galvanized steel for superior strength and durability. Most of them are carpeted to protect your belongings and lighted for easy loading and unloading at night.

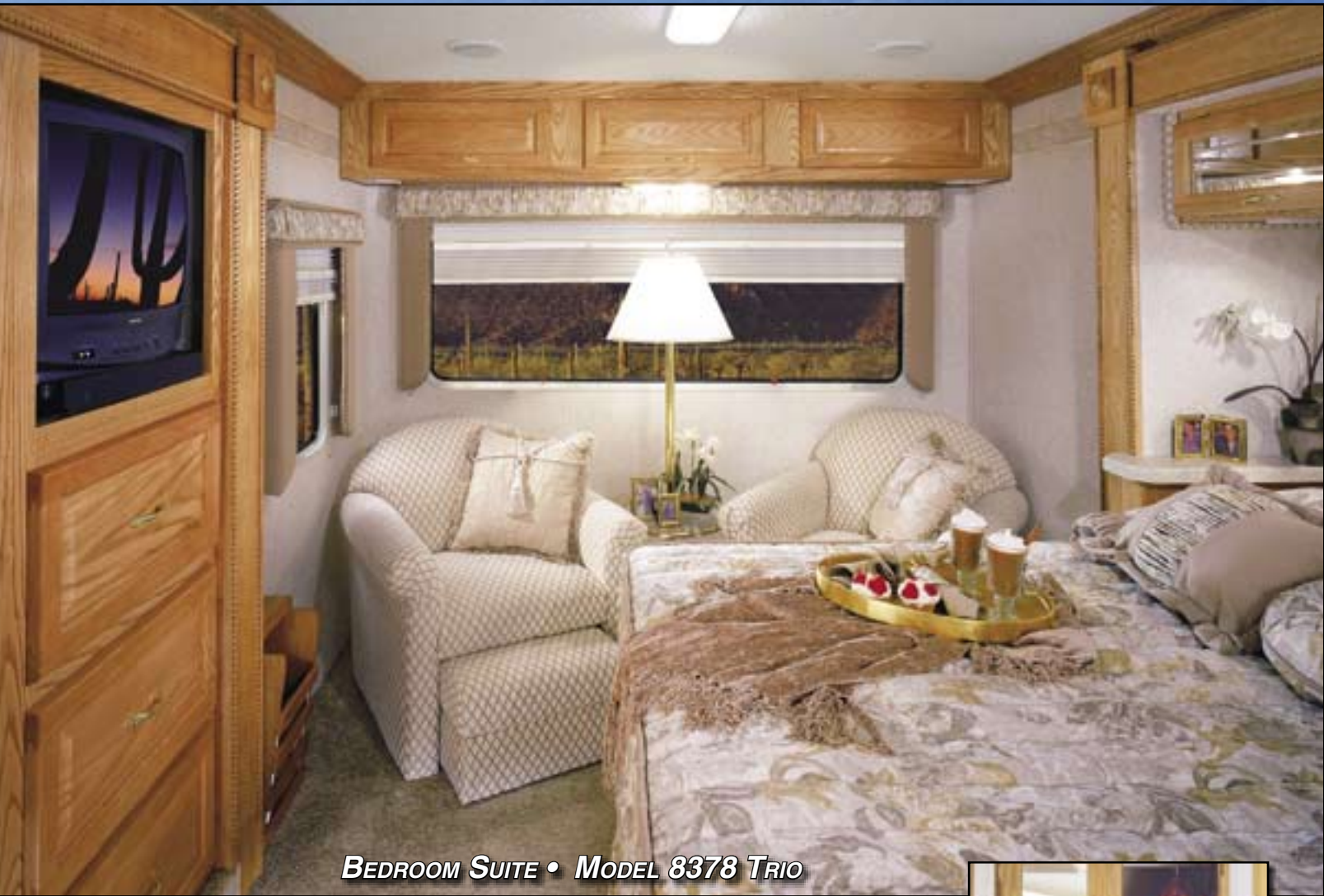


EXTERIOR PAINT • BLUE

**EXTERIOR PAINT
EARTH**



EXTERIOR PAINT • GREEN



BEDROOM SUITE • MODEL 8378 TRIO

SPACIOUS BEDROOMS...

If you need a quiet private place... the rear sitting or vanity/desk area makes your bedroom suite usable all day long.

You will enjoy the warm comfort of your queen-size bed with a full entertainment center to help you relax.

Retiring into your bedroom suite may be just what you need... After a long days travel.



VANITY/DESK • MODEL 8378 TRIO



**WASHER/DRYER
COMBINATION**

& Luxurious Baths...



BEDROOM COMFORT...

The openness of all Sun Voyager's bedrooms give you the floorplan choices you need to meet your needs for privacy and relaxation.

The full 60" wide beds, in our bedroom slides, provide plenty of room for a restful nights sleep with all the amenities you would expect from Gulf Stream.



BEDROOM SUITE • MODEL 8368



PRIVATE BATH • MODEL 8378

LUXURIOUS BATH AREAS...

The full-size "French Doors" (Model 8378) truly add to the elegant residential feel to the Sun Voyager. They provide an openness to the bath as well as adding privacy to the bedroom when desired.

The full-size one piece shower or a deeper tub/shower, with skydome, makes your personal bathing just like being at home. The ceramic tile flooring makes cleaning easy.

You will truly appreciate the open space our bathrooms offer, with plenty of room for 2 or 3 people as you prepare for that special night out.

Luxury... privacy... and function make the Sun Voyager's bath areas one of the most appreciated aspects of our creative floorplan designs.

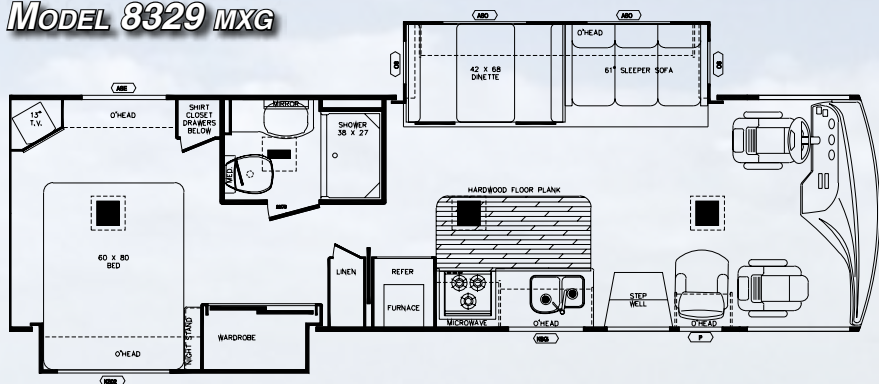


***LARGE SHOWER
MODEL 8378***



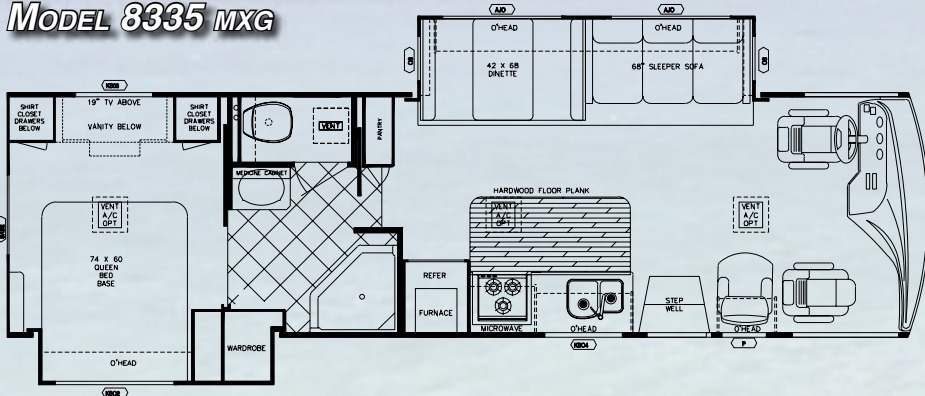
***TUB/SHOWER COMBO
MODEL 8378***

MODEL 8329 MXG



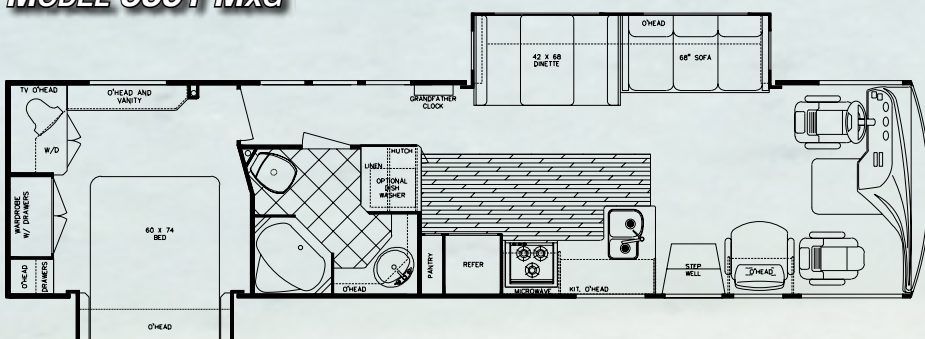
Engine	8.1
GVWR	20,700
Wheelbase	208"
Ext. Length	32'-6"
Ext. Height w/AC - Ford	11'-8"
Ext. Height w/AC - WH	12'-2"
Ext. Width	101"
Int. Height	83"
Int. Width	97"
Fresh	55 gal.
Grey	50 gal.
Black	50 gal.
Water Heater w/DSI	6 gal.
LP Gas Tanks	85 lbs.
Fuel Tank (Gal.)	75
Furnace (BTU's)	40,000

MODEL 8335 MXG



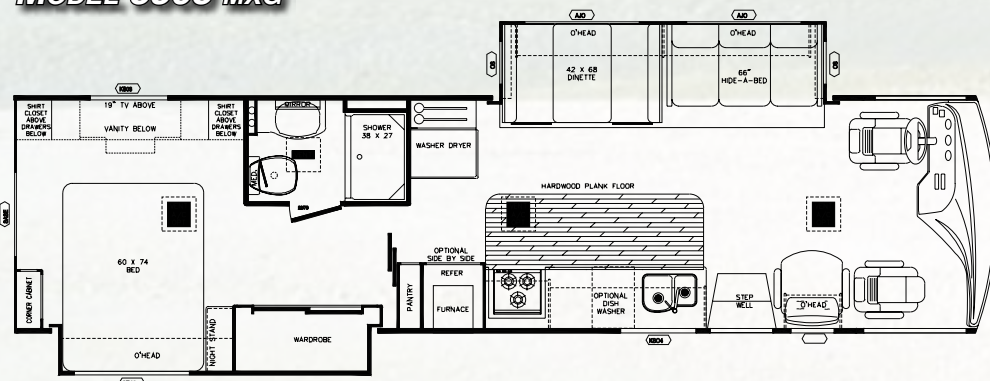
Engine	8.1
GVWR	20,700
Wheelbase	208"
Ext. Length	33'-4"
Ext. Height w/AC - Ford	11'-8"
Ext. Height w/AC - WH	12'-2"
Ext. Width	101"
Int. Height	83"
Int. Width	97"
Fresh	55 gal.
Grey	50 gal.
Black	50 gal.
Water Heater w/DSI	6 gal.
LP Gas Tanks	85 lbs.
Fuel Tank (Gal.)	75
Furnace (BTU's)	40,000

MODEL 8351 MXG



Engine	8.1
GVWR	22,000
Wheelbase	242"
Ext. Length	36'-8"
Ext. Height w/AC - Ford	11'-8"
Ext. Height w/AC - WH	12'-2"
Ext. Width	101"
Int. Height	83"
Int. Width	97"
Fresh	60 gal.
Grey	50 gal.
Black	50 gal.
Water Heater w/DSI	10 gal.
LP Gas Tanks	85 lbs.
Fuel Tank (Gal.)	75
Furnace (BTU's)	40,000

MODEL 8368 MXG

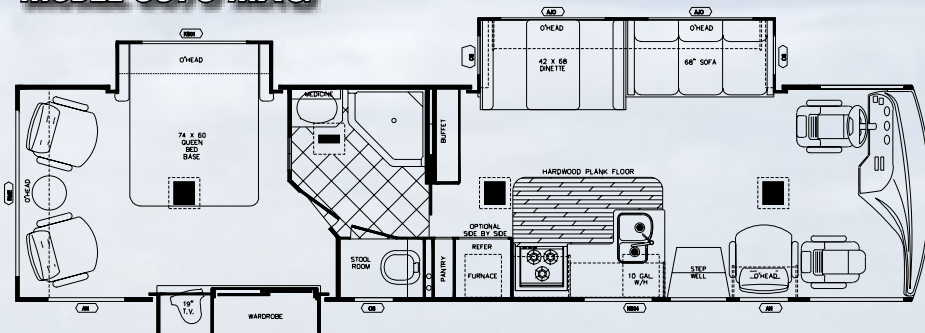


Engine	8.1
GVWR	22,000
Wheelbase	242"
Ext. Length	36'-8"
Ext. Height w/AC - Ford	11'-8"
Ext. Height w/AC - WH	12'-2"
Ext. Width	101"
Int. Height	83"
Int. Width	97"
Fresh	60 gal.
Grey	50 gal.
Black	50 gal.
Water Heater w/DSI	10 gal.
LP Gas Tanks	85 lbs.
Fuel Tank (Gal.)	75
Furnace (BTU's)	40,000

Standards & Options...



Model 8378 MXG



Engine	8.1
GVWR	22,000
Wheelbase	242"
Ext. Length	36'-8"
Ext. Height w/AC - Ford	11'-8"
Ext. Height w/AC - WH	12'-2"
Ext. Width	101"
Int. Height	83"
Int. Width	97"
Fresh	55 gal.
Grey	50 gal.
Black	50 gal.
Water Heater w/DSI	10 gal.
LP Gas Tanks	85 lbs.
Fuel Tank (Gal.)	75
Furnace (BTU's)	40,000

Interior & Decor

- Nearly 7' of Interior Ceiling Height
- Large Residential Style Cabinetry
- Natural Oak Cabinet Doors
- Corian™ Countertops in Kitchen
- Corian™ Edged Solid Surface Countertops in Bathroom and Bedroom
- 22" Metal Drawer Guides w/Nylon Rollers
- Silverware Drawer and Drawer Front
- Windshield Privacy Drape
- Flexsteel Furniture
- Aluminum Frame Dinnette Seats
- 3-Way Driver & Passenger Seats
- Deluxe Carpet w/Pad
- Coordinated Bedspread & Shams
- Lighted Closets
- Decorator Mirror (where available)
- Generous Overhead Storage
- Day/Night Shades
- Hardwood Stiles
- Hardwood Cabinets

Appliances

- 3-Burner High-Performance Range
- Lighted, Power Range Hood
- 2-Door, 2-Way Refrigerator
- Large Microwave Oven

Electrical Systems

- Easy-Access Dual Battery System
- 12-volt, 45-Amp Converter
- Electric Supply Cord
- Electric Overload Protection
- Automotive-Type, Color-Coded Wiring
- Lighted Entry & Aisle Lights
- Directional Reading/Map Lights
- Battery Disconnect
- 50 AMP Service (8378, 8368, 8351)

Heating, Ventilation & A/C

- Ducted Furnace w/Elect. Ignition (40,000 BTU's)
- Ducted Roof A/C

Exterior & Construction

- "Cradle of Strength" Construction:
 - Welded Steel Sub-Floor Truss Sys.
 - 1-1/2" Tubular Metal Cage Construction on Sidewalls & Roof
 - Insulated Floors w/Virtually Seamless Weyerhaeuser Structurewood Decking
 - Vacuum-Bond Laminated 2" Thick Sidewall Construction w/Seamless Fiberglass
- High-Density Block Foam Insulation Throughout Sidewalls, Roof & Floor
- Radiused Laminated Fiberglass Roof w/Tubular Metal Rafters
- Molded Roof Brick Insulation in Roof, Surrounding Ducted Roof A/C Vents
- Heated & Fully Enclosed Holding Tanks
- Automotive-Style Bumpers
- Deluxe Outside Mirrors
- Generous Pass-Through Basement Storage, Including a Full-Width Rear Trunk Area
- Hinged Exterior Storage Doors
- Exterior Storage Compartment Latches & Locks
- Fully Welded Steel Firewall
- Below Floor Storage Area's are Constructed of Galvanized Steel (not plywood or plastic)
- Deluxe Ext. Paint Graphics

Deluxe Standard Features

- Raised Panel Refrigerator Inserts
- 24" Sony Color TV in Front Overhead
- 10 Gal. Elect. Ign. Water Heater (8351, 8368, 8378)
- TV Antenna w/Amp and Boost & 2 Jacks
- Spare Tire and Wheel Covers (Ford Only)
- AM/FM Cassette or CD Stereo w/4 Speakers
- Monitor Panel
- Generator Ready
- Converter w/Battery Charger
- Auto Start Switch
- Flush Floor Slideouts
- Wood Plank Flooring
- All Paint Exterior

Chassis

- Workhorse - Vortec 8.1 and 5-Speed Automatic Transmission, 19.5" Tires, 20,700 GVWR (8329, 8335)
- Workhorse - Vortec 8.1 and 5-Speed Automatic Transmission, 22" tires, 22,000 GVWR (8351, 8368, 8378)
- Electronic Ignition
- Power Steering and Brakes
- High Capacity Automotive Heater & A/C w/R134 Environmental Refrigerant
- Tilt Steering Wheel
- Cruise Control

Optional Chassis

- FORD - Super Duty w/Triton V-10, 4-Speed Automatic Transmission, 20,500 GVWR (8329, 8335)
- FORD - Super Duty w/Triton V-10, 4-Speed Automatic Transmission, 20,500 GVWR (8351, 8368, 8378)
- Electronic Ignition
- Power Steering and Brakes
- High Capacity Automotive Heater & A/C w/R134 Environmental Refrigerant
- Tilt Steering Wheel
- Cruise Control

Bath & Water

- Demand Water System
- City Water Hook-Up
- Tub/Shower (most models)
- Marine Toilet
- Gravity Drains on Fresh Water Lines
- Skydome in Shower (most models)

Popular Options

- Driver's Door
- Exterior Radio/Cassette Compartment
- Back Up Monitor
- Sony Surround Sound w/DVD Player
- Full Body Paint
- Garden Tub
- 19" Sansui Color TV in Bedroom (8335, 8351, 8368, 8378)