

**SO MUCH FUN OUT THERE, YOU CAN  
ALMOST HEAR YOUR MOM CALLING  
YOU IN FOR SUPPER.**



PIONEER & PIONEER SPIRIT



Pioneer 21CKS shown in Starlight interior décor with Summer Oak wood finish. TV (as shown) not included.

## INTERIOR DÉCOR CHOICES

### DESERT SAND



LIVING ROOM

BEDROOM

### LODEN



LIVING ROOM

BEDROOM

### STARLIGHT



LIVING ROOM

BEDROOM

### WOOD CHOICES



**CLEAR OAK**

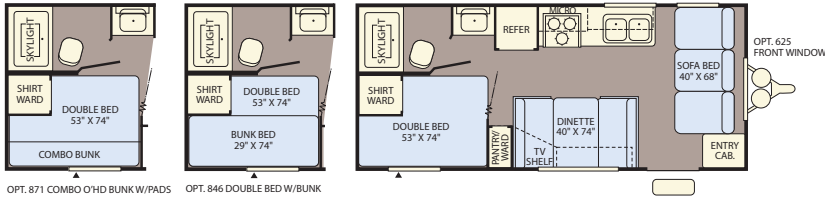


**SUMMER OAK**

# PIONEER SPIRIT FLOOR PLANS

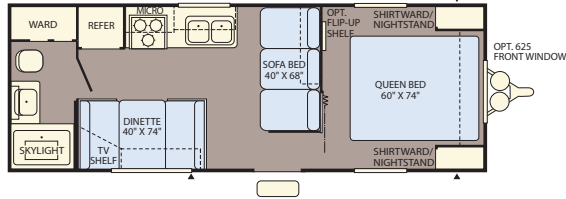
## 18CK

Sleeps 6-7\*



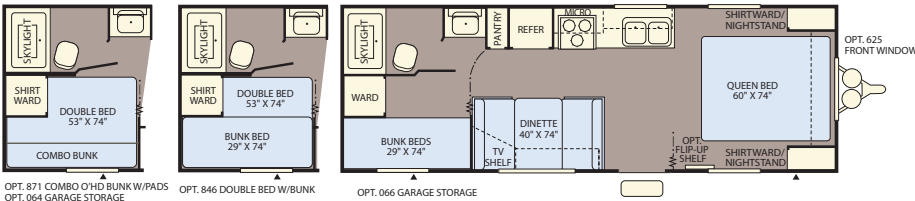
## 23FQ

Sleeps 6\*



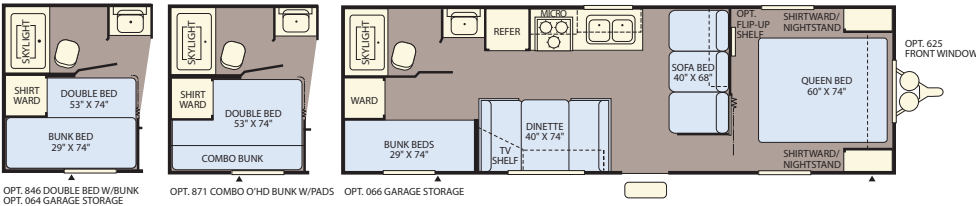
## 24BH

Sleeps 6-7\*



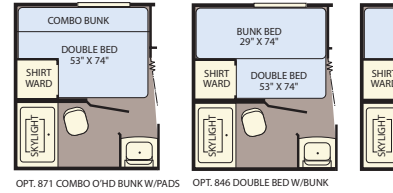
## 28BH

Sleeps 8-9\*



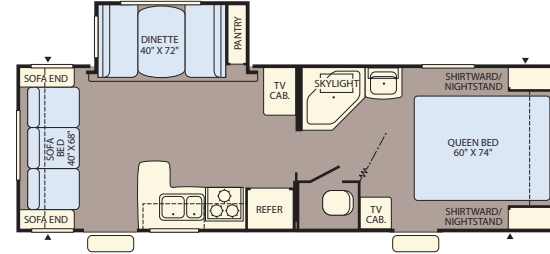
## 21CKS

Single Slide-Out  
Sleeps 6-7\*



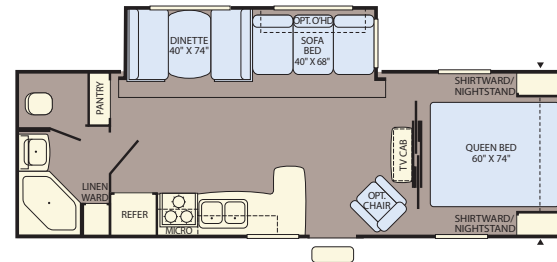
## 25RLS

Single Slide-Out • Sleeps 6\*



## 27RBS

Single Slide-Out • Sleeps 6\*

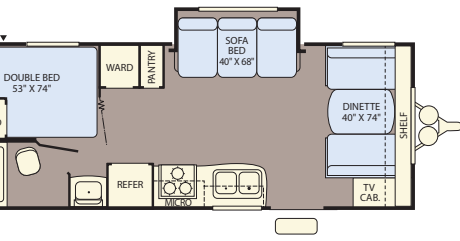


\*Sleeping capacity is a variable number and is affected by items such as size of occupant, options and floor plan. Some models are not available in all areas of the country. Please see your local dealer for model availability.

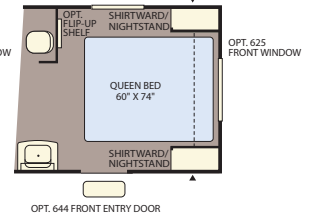
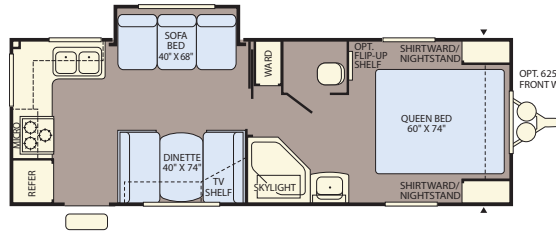
▲ = Exterior Storage

	PIONEER SPIRIT				PIONEER					
	18CK	23FQ	24BH	28BH	21CKS	24RKS	25RLS	26BKS	26RLS	27RBS
<b>WEIGHTS</b>										
GVWR (lbs) <sup>1</sup>	5,600	6,400	5,800	7,500	6,400	7,000	7,900	8,000	7,900	8,000
Gross Dry Weight (lbs) <sup>2, 6</sup>	4,000*	4,264*	4,005*	4,591*	4,198*	4,461*	5,795*	5,595*	5,521*	5,883*
Cargo Carrying Capacity (lbs) <sup>3, 6</sup>	1,600*	2,136*	1,795*	2,909*	2,202*	2,539*	2,105*	2,405*	2,379*	2,117*
Hitch Dry Weight (lbs) <sup>2, 6, 9</sup>	345*	496*	453*	549*	636*	473*	596*	518*	801*	780*
<b>CAPACITIES</b>										
Length (Feet & Inches) <sup>4, 6, 8</sup>	22' 3"	26' 1"	26' 8"	29' 7"	24' 8"	27' 2"	28' 11"	29' 3"	29' 1"	29' 6"
Height (Feet & Inches) <sup>5, 6</sup>	9' 11"	9' 11"	9' 11"	9' 11"	9' 11"	9' 11"	10' 4"	10' 4"	10' 4"	10' 4"
Fresh Water Holding Tank (gal) <sup>6, 7</sup>	40	40	40	40	50	50	50	50	50	50
Grey Water Holding Tank (gal) <sup>6, 7</sup>	40	40	40	40	40	80	40	40	40	40
Black Water Holding Tank (gal) <sup>6, 7</sup>	40	40	40	40	40	40	40	40	40	40
Propane Capacity (lbs) <sup>6, 7</sup>	40	40	40	40	60	60	60	60	60	60
Tire Size (Load Range)	ST205/ 75 15C	ST205/ 75 15C	ST205/ 75 15C	ST205/ 75 15C	ST205/ 75 15C	ST205/ 75 15C	ST225/ 75 15D	ST225/ 75 15D	ST225/ 75 15D	ST225/ 75 15D

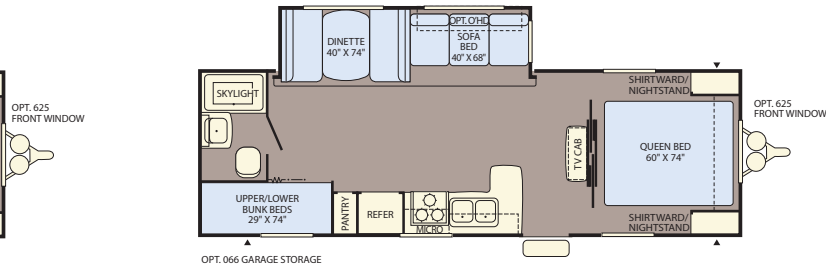
# PIONEER FLOOR PLANS



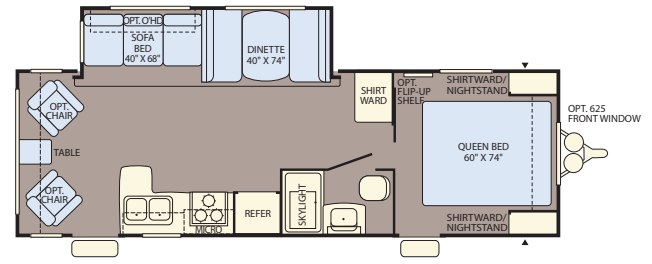
**24RKS**  
Single Slide-Out  
Sleeps 6\*



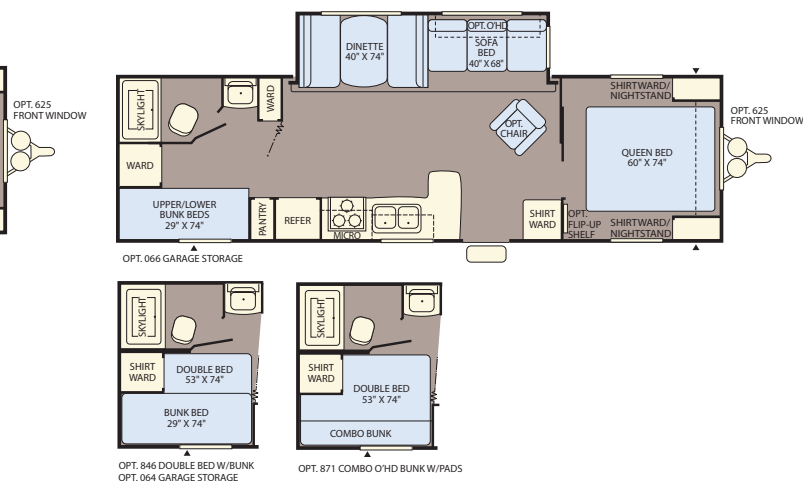
**26BKS**  
Single Slide-Out • Sleeps 8\*



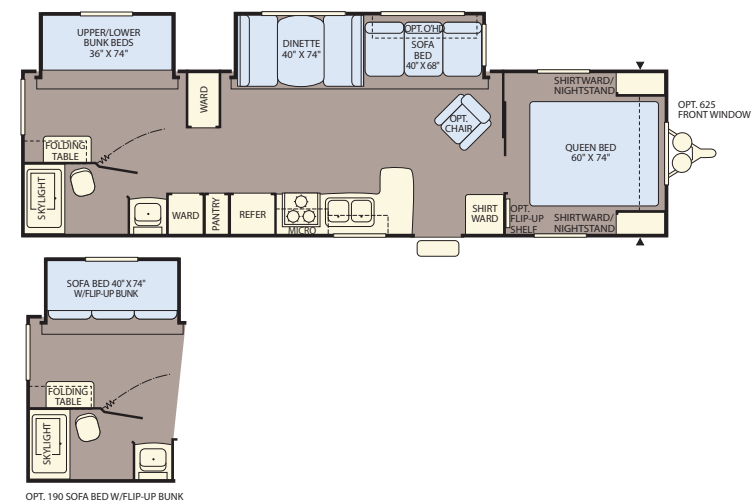
**26RLS**  
Single Slide-Out • Sleeps 6\*



**29BHS**  
Single Slide-Out • Sleeps 8-9\*



**31BD2S**  
Double Slide-Out • Sleeps 8-9\*



29BHS	31BD2S
9,000	9,500
5,705*	7,112*
3,295*	2,388*
720*	766*
32' 2"	34' 1"
10' 4"	10' 4"
50	50
40	40
40	40
60	60
ST225/ 75 15D	ST225/ 75 15D

- GVWR (Gross Vehicle Weight Rating) is the maximum permissible weight of this trailer when fully loaded. It includes all weight at the trailer axle(s) and tongue or pin.
- All dry weights are based on the standard model and do not include optional features or equipment.
- Cargo Carrying Capacity is determined by subtracting Gross Dry Weight from GVWR. Cargo includes all fluids, optional features, equipment, and personal cargo.
- Length measured from hitch or pin box to rear bumper (excludes accessories). Trailer length includes hitch; fifth wheel includes standard pin box.
- Actual height may be lower, based on option offerings. Consult with your dealer to obtain actual height for the unit you are interested in.
- Approximate.
- Water weight equals 8.3 lbs per gallon. Propane weight equals 4.2 lbs per gallon.
- Add 10" if equipped with optional spare tire and carrier.

- Hitch weights are dependent upon how the trailer is equipped with options, on-board cargo and tank fluid levels. Actual hitch weights may be higher or lower than shown. It is recommended that the tow vehicle and hitch for your trailer have sufficient capacity to accommodate the GVWR of the trailer selected.

N/A = Not available at the time of printing.

\* = Estimated weights

**IMPORTANT— PLEASE READ:** Product information, photography and illustrations included in this publication were as accurate as possible at the time of printing. For further product information and changes, please visit our website at [www.fleetwoodrv.com](http://www.fleetwoodrv.com) or contact your local Fleetwood dealer. Prices, materials, design and specifications are subject to change without notice. All weights, fuel, liquid capacities and dimensions are approximate. Fleetwood has designed its recreational vehicles to provide a variety of uses for customers. Each vehicle features optimal seating, sleeping, storage and fluid capacities. The user is responsible for selecting the proper combination of loads (i.e., equipment, fluids, cargo, etc.) to ensure that the vehicle's capacities are not exceeded.



# FEATURES

## STANDARD FEATURES

### INTERIOR - THROUGHOUT

- 120V Central Electrical Panel
- 120-Volt GFI Circuit Protection (Galley/Bath/Patio)
- 6-Gallon Propane/12V DSI (Direct Spark Ignition) Water Heater
- 92 5/8" Interior Width
- Double-Light Fixtures (Most Areas)
- Dual 7-Gallon Propane Cylinders w/Regulator & Auto-Changeover (Most Models)
- Hydro Flame® Forced Air, Direct Spark Ignition Furnace w/Thermostat
- In-Ceiling Air Conditioner Ducting (Most Models)
- In-Floor Furnace Ducting (Most Models)
- Large TV Location (Most Models)
- Light Colored Interior Wall Coverings
- Mini-blinds Throughout (Except Bunk Windows)
- Prewired for Roof Air Conditioner
- Prewired for Stereo & Speakers
- Solid State Converter w/Built-In Battery Charger
- Stereo AM/FM CD Player
- Throw Pillow
- Wall-Mounted Systems Monitor Panel
- Wall-Switched Interior Lights
- Water Heater Bypass

### GALLEY

- Double Bowl Sink
- Double Handle High Rise Faucet

- 16" Drop in Range w/Oven
- Deluxe 3 Panel Wood Grain Refrigerator Insert (Excludes Spirit Model)
- Double Door Propane/Electric Refrigerator
- Large Cabinet Doors
- Microwave w/Electronic Touch Pad
- Mortise and Tenon Cabinet Doors
- Overhead Storage Cabinet Above Sink
- Range Hood w/12V Light & Exhaust Fan

### BEDROOM

- Bedside Nightstand (Most Models)
- Decor-Coordinated Bedspread
- Innerspring Mattress
- Lift-Up Bed Platform w/Below Bed Storage (Most Models)
- Wardrobes Accommodate Residential Size Clothes Hangers

### BATHROOM

- 12V Power Exhaust Roof Vent
- ABS Bath Tub Wall Surround (Most Models)
- Medicine Cabinet w/Mirrored Door & Adjustable Shelves
- Skylight
- Thetford® Fresh Water Flush Toilet
- Towel Bar, Towel Ring, Toilet Paper Holder
- Wall-Switched Ceiling Light

### SAFETY/CONVENIENCE

- 26" Wide Main Entry Door w/Window
- 4-Wheel Electric Brakes

- Break-Away Emergency Disconnect Brake
- Carbon Monoxide Detector/Alarm
- Fire Extinguisher
- Flush Mount Entry Door Latch w/Deadbolt Lock
- Patio Light-Interior Switch
- Propane Detector/Alarm
- Retractable Entry Step w/Non-Skid Strip
- Smoke Detector/Alarm

### EXTERIOR - THROUGHOUT

- 120V Patio Receptacle
- Arctic White Gloss Exterior Metal Finish
- Fiberglass Insulation
- Front Gravel Guard
- Full Color Decorative Exterior Graphics
- LPG Cover
- Molded Wheel Well Skirts (Most Models)
- Patio Awning
- Radius Aluminum Sidewall Skirting (Most Models)
- Radius Corner Entry Door (Most Models)
- Radius Corner Luggage Doors (Most Models)
- Radius Corner Safety Glass Windows
- Screen Door
- Rear Bumper w/Sewer Hose Carrier
- Slide-Out End Wall Window
- Seamless, One-Piece Rubber Roof
- Structural I-Beam Cambered Chassis

- Sub-Floor Fresh Water Holding Tank (Most Models)
- Truss Roof Rafters
- TV Antenna

### STORAGE

- Locking, Insulated Luggage Doors

## OPTIONS

### INTERIOR - THROUGHOUT

- 13,500 BTU Air Conditioner
- 6-Gallon Propane/12V/110V DSI (Direct Spark Ignition) Water Heater (Most Models)
- Front Window w/Rockguard
- Bedroom Carpet (Most Models)
- Living Room Carpet (Most Models)
- Stereo AM/FM/CD/DVD/MP3 Player (Most Models)
- Headboard
- LCD TV (Most Models)
- Range Cover
- Sink Lids

### EXTERIOR - THROUGHOUT

- Enclosed Chassis (Most Models)
- Exterior Shower
- Garage Storage (Most Models)
- Spare Tire and Carrier
- Stabilizer Jacks
- Exterior Speakers

## CONTACT US

To locate a dealer near you, visit our website at [www.fleetwoodrv.com](http://www.fleetwoodrv.com) or call 1-800-444-4905. We can also be contacted at Fleetwood Customer Relations, P.O. Box 1007, Decatur, IN 46733.

## FLEETWOOD TRAVELCADE CLUB

As a Fleetwood owner, you're eligible to become a member of the Fleetwood Travelcade Club. It's a perfect way to meet other Fleetwood owners who love to travel across America and share in the RV lifestyle. Call (877) 577-2560 or visit our website at [www.fleetwoodrv.com/owners\\_clubs](http://www.fleetwoodrv.com/owners_clubs) to learn more and join the fun!

## RV OWNERCARE

See your local dealer for complete details.

Your Local Fleetwood Dealer Is:

## TO OUR CUSTOMERS...

To make sure that you get the maximum satisfaction out of your recreational vehicle purchase, there are several things you should know:

1. Learn all you can about the travel trailer or fifth wheel you're planning to buy. Don't rely on word of mouth. Get the facts about the actual trailer length, width, unloaded weight with options, Gross Vehicle Weight Rating, and Cargo Carrying Capacity. These are usually available in the manufacturer's sales literature or from the Cargo Carrying Capacity Label located in each trailer. Be sure to check this information before you decide which unit to buy.
2. Verify the towing capacity of your tow vehicle. If you don't know, or aren't sure, you can ask at your automotive dealership. Be sure to match its tow rating to the loaded (not dry) weight of your trailer. Include the weight of water, additional accessories, clothing, food, and gear. To help Fleetwood travel trailer customers estimate this total weight, our Gross Vehicle Weight Ratings reflect the maximum weight of the trailer when fully loaded for camping. Be sure the weight of the tow vehicle plus the weight of your trailer do not exceed the Gross Combined Weight Rating of the tow vehicle. Taking these simple steps before you buy will help ensure that your trailer and tow vehicle combination is just what you wanted.

See you on the trail!

