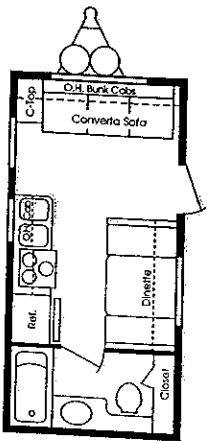


1996

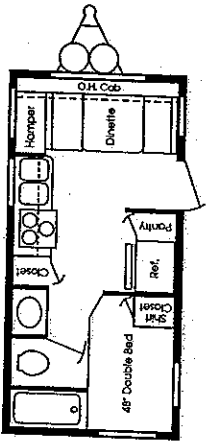
**MAKE  
YOUR MARK  
WITH A**

**Four Winds XL**

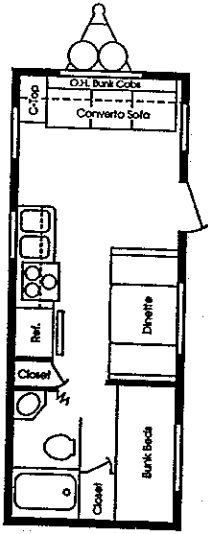
18 RB



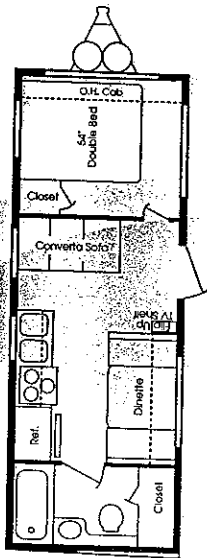
18 FD



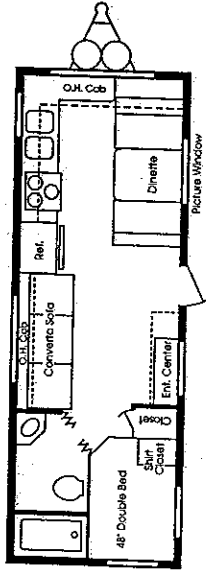
22 BH



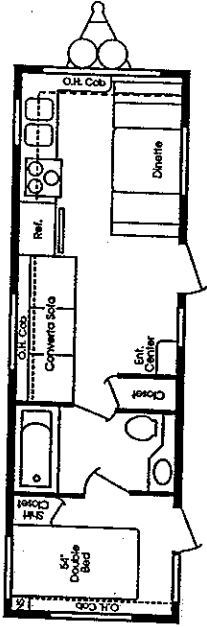
24 FB



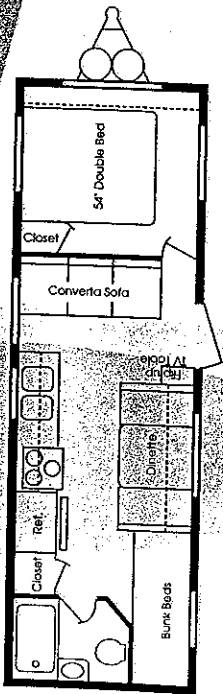
24 FK



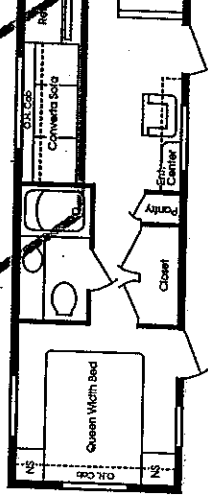
26 FK



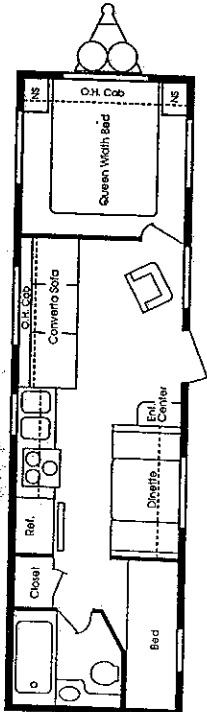
26 B2



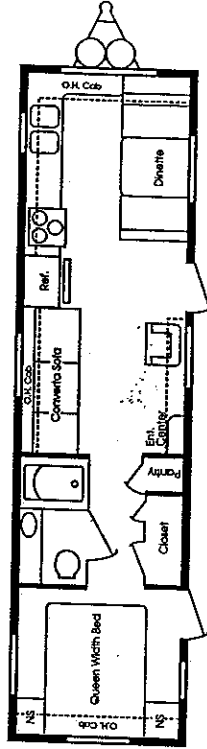
30 FK



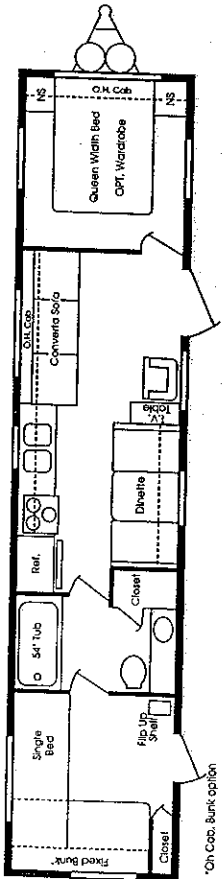
30 BH2



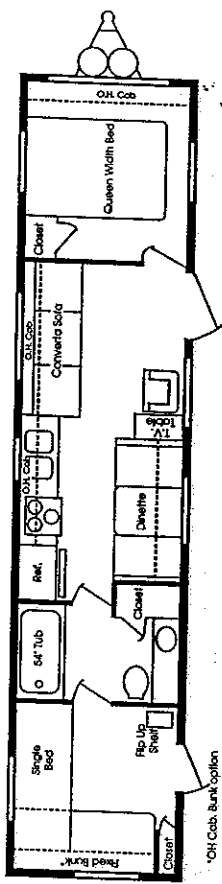
32 FK



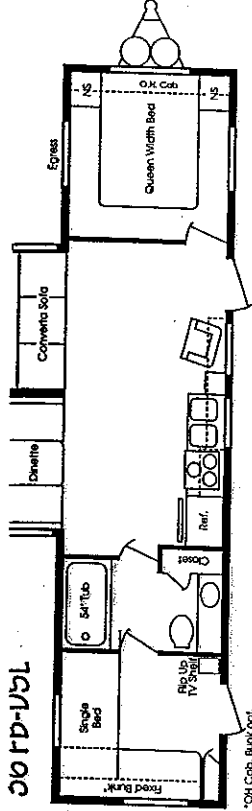
35 FB



35FB-2B

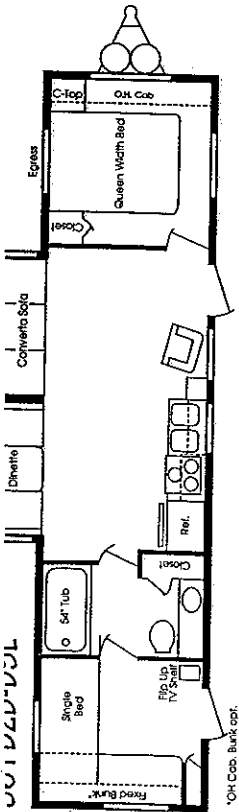


\*On Cab. Bunk option



30 RD-151L

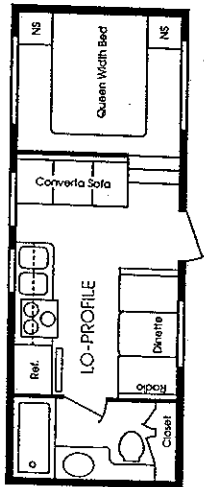
\*OH Cab, Bunk Opt.



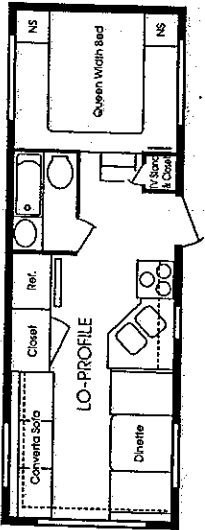
30 RD-151R

\*OH Cab, Bunk Opt.

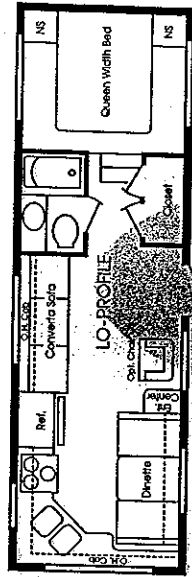
22 FWRB



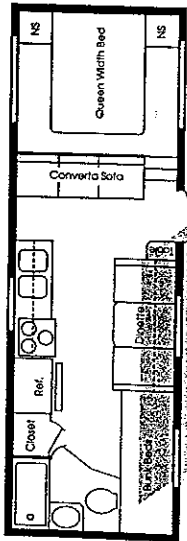
24 FWCK



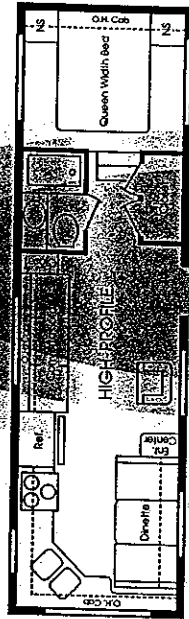
26 FWRK



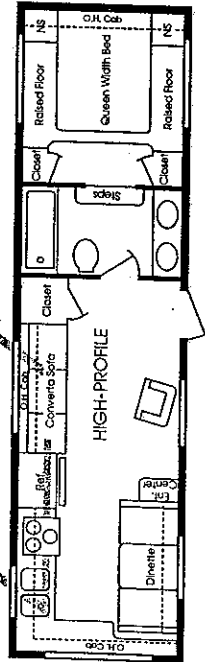
26 FWBH



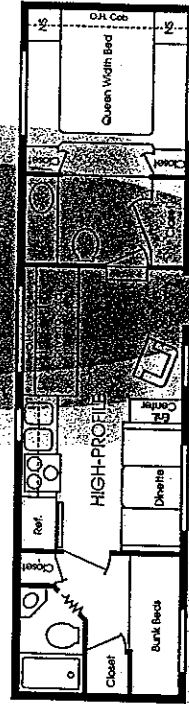
28 FWRK-2



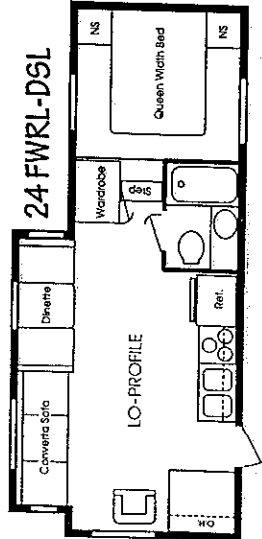
30 FWRK



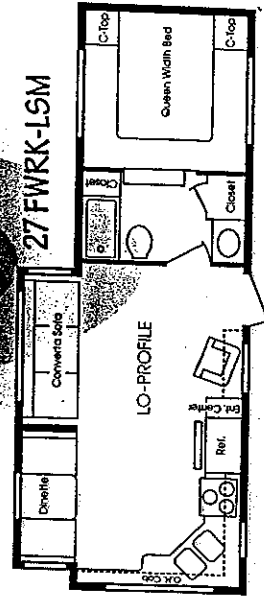
32 FW-2B



24 FWRD-DSL



27 FWRK-LSM



1996 Fifth Wheel Specifications	18RB	18FD	22BH	24FB	24FK	26B2	30FK	30BH-2	32FK	35FB	35FB-2	36FB	36FB	22FB	24CK	26RK	26BH	28RK-2	30RK	32-2B	24RL	27RK
Sleeping Area	2	2	3	3	3	3	3	4	3	4	4	4	4	3	3	3	3	3	3	4	3	3
Length	19'4"	19'4"	23'4"	25'4"	27'4"	27'4"	31'4"	31'4"	32'11"	35'11"	35'11"	36'11"	36'11"	22'11"	24'11"	26'11"	26'11"	28'11"	30'11"	32'11"	24'11"	27'11"
Width w/o Awning	96"	96"	96"	96"	96"	96"	96"	96"	96"	96"	96"	96"	96"	96"	96"	96"	96"	96"	96"	96"	96"	96"
Hitch Dry Weight (Approx.)	435	460	555	535	558	504	796	500	950	844	804	1470	1470	780	860	870	880	1155	1375	1375	1000	915
Axle Dry Weight (approx)	3105	3280	3565	3706	3907	4101	4475	4620	4540	5071	5051	6790	6790	3235	4440	4345	4640	4530	4450	5295	5080	5685
GVWR	7000	7000	7000	7000	7000	7000	7000	7000	7000	7000	7000	8800	8800	7000	7000	7000	7000	7000	7000	7000	7000	8800
NCC—Net Carrying Capacity	3895	3740	3415	3135	3093	2899	2525	2380	2460	1929	1949	2010	2010	3765	2560	2655	2360	2470	2520	1705	1920	2935
UVW—Unloaded Vehicle Weight	3540	3720	4120	4400	4550	4605	5271	5120	5480	5915	5855	8260	8260	4015	5300	5215	5520	5685	5825	6670	6080	6600
Radial Tire—Size	ST205 75R15	ST205 75R15	ST205 75R15	ST205 75R15	ST205 75R15	ST205 75R15	ST205 75R15	ST205 75R15	ST225 75R15	ST225 75R15	ST225 75R15	ST225 75R15	ST225 75R15	ST205 75R15	ST205 75R15	ST205 75R15	ST205 75R15	ST225 75R15	ST225 75R15	ST225 75R15	ST225 75R15	ST225 75R15
Tire Load Range	C	C	C	C	C	C	C	C	C	C	C	C	C	C	C	C	C	C	C	C	C	C
Axle Dry Weight Coupler Class Used	4	4	4	4	4	4	4	4	3	3	3	3	3									
Dual LP Tanks w/Reg./Changeover (Gals.)	5	5	5	5	5	5	5	5	5	5	5	5	5									
Dual Waste Water Holding Tanks (Approx. Gals.)	60	60	60	60	60	60	60	60	60	60	60	60	60									
Demand Water Sys. w/12 V. Pump (Approx. Gals.)	30	30	30	30	30	30	30	30	30	30	30	30	30									
Furnace w/12V Fan/Thermostat (BTUS)	20M	20M	20M	25M	25M	25M	31M	31M	31M	31M	31M	31M	31M	25M	25M	25M	31M	31M	31M	31M	31M	31M

**FOUR WINDS XL STANDARDS**

Roof Ducting for Air • Crown Roof 5" Truss (26' and above) • Double Door Refer • TV Antenna w/RV Booster • 45 AMP Converter • Dead Bolt Locks • 3 Burner High-intensity Range • Porch & Service Light • Full 8' Width • Radius Jalousie Windows • Tinted Windows • Tongue & Groove 5/8" Plywood Floors • Radius Compartment Doors • Knife Holder • Slotte Ralley Wheels • 6 Gal. Gas Water Heater • Shower Curtain • Monitor Panel • Power Vent in Bath • Living Room Carpet w/Pad • Radial Tires • Bed Lifts on Island Beds • In-floor Ducted Heat • Solid Oak Framed Cabinet Doors • One-piece Tub Surround • Radius Entry Doors • AM/FM Stereo Cassette 2/4 Speakers • Full Size Stainless Steel Kitchen Sink • Smoke Detector • Pull Shades • 20# Gas Bottles w/Auto Switch

**CONSTRUCTION FEATURES**

No Putty Tape — We Use Butyl Rubber, Silicon Caulk and Imported Foam Tape • Ducted Air Run in a 5" Truss Roof (26' and above) • Unit is Full 8' Wide • Heavy-duty Box Tube Frame with 4" to 6" Wide Supporting Outriggers • Walls, Roof and Floor Framing is All Minimum of 16" on Center • Bottom Exterior Metal Attached with Screws Instead of Staples • Stress Seams Installed Above Entry Doors • 5/8" Exterior Grade Tongue & Groove Plywood Floor • In-floor Heat Ducting • Solid Oak Frame Cabinet Doors (Classic) • Wood Ceiling Trim, No Plastic Gimp • Cabinets Fit flush to Ceiling • Dicor Corp Brite-Ply Seamless EPDM Roof Covering

**Vehicle Loading**—Every effort has been made to provide the greatest number of options for the recreational vehicle owner. Along with these choices comes the responsibility to manage the loads that are imposed by the choices so that they remain within the manufacturer's specified chassis weight limits. Do not overload the recreational vehicle.

**Dry weights** based on standard features; optional equipment not included. Carrying capacity determined by subtracting dry gross weight from GVWR and includes fluids, options and cargo. Liquid capacities and weights are approximations only.

**Warning:** This information is intended as a guide only. Weights of individual vehicles may vary. Consult your Owner's manual for complete loading, weighing & towing instructions.

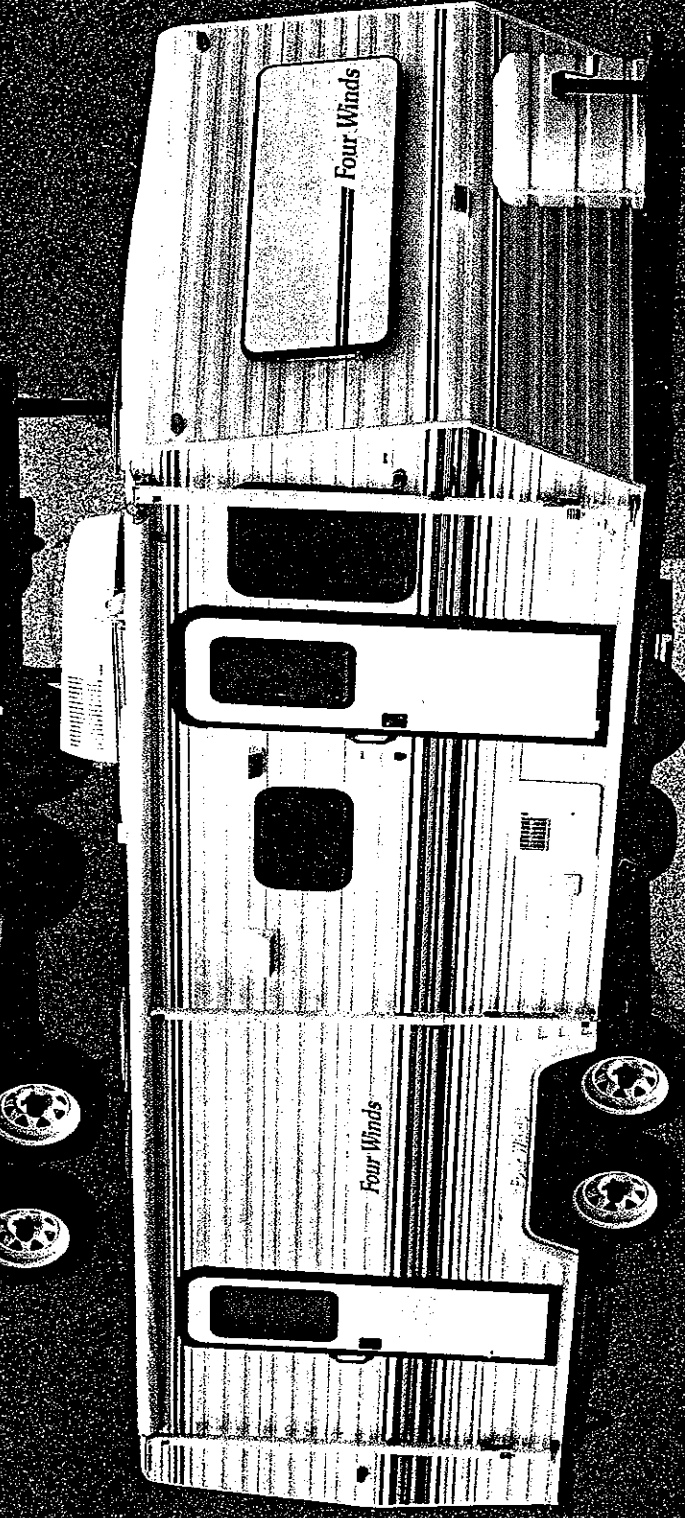
**Four Winds XL**

305 Steury Ave. • Goshen, IN 46526  
(219) 534-1224



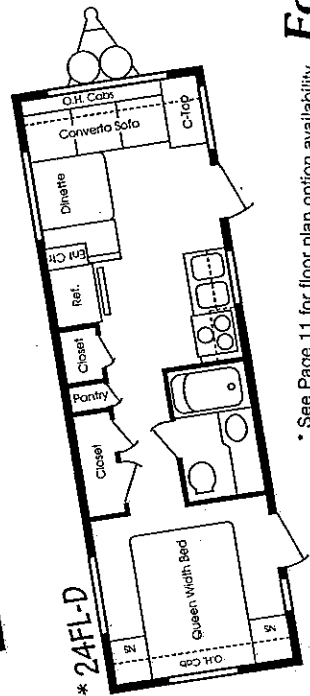
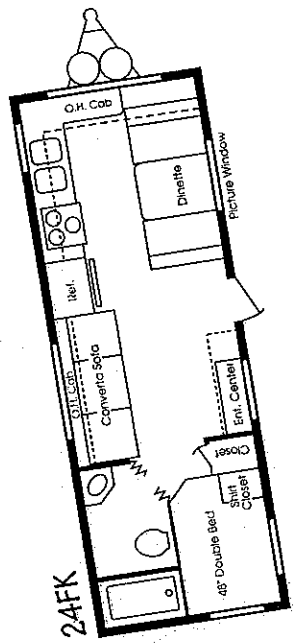
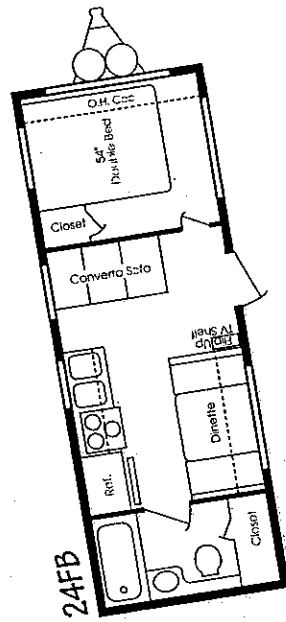
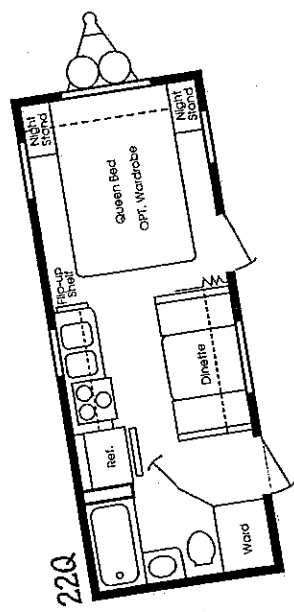
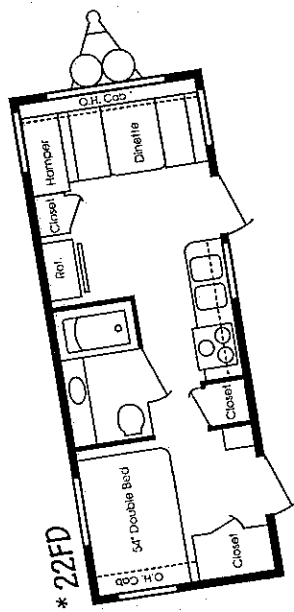
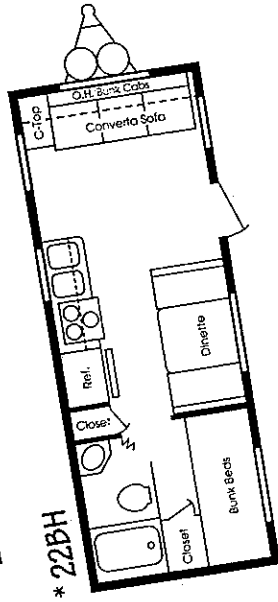
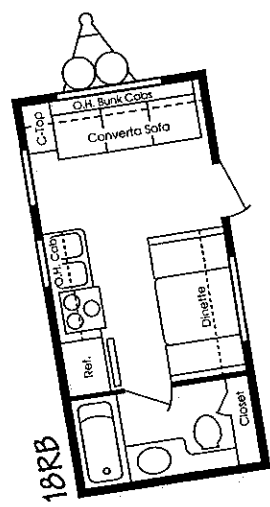
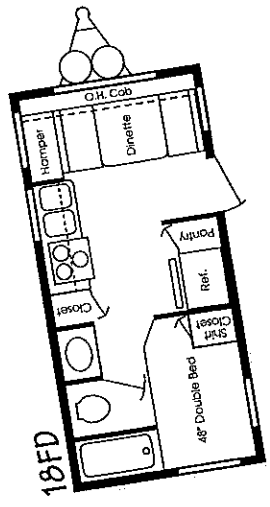
1996

# DISCOVER FOUR WINDS

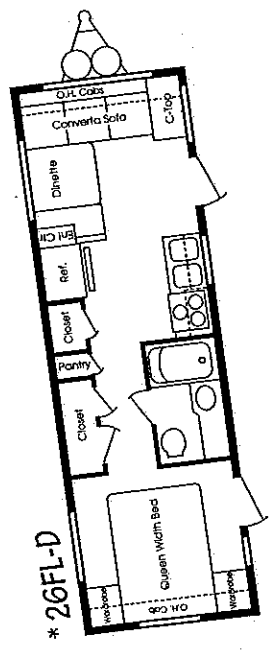
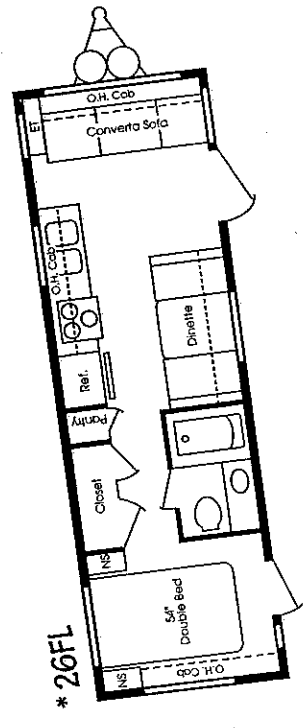
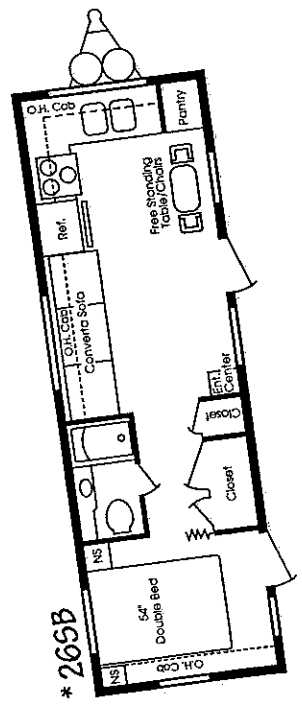
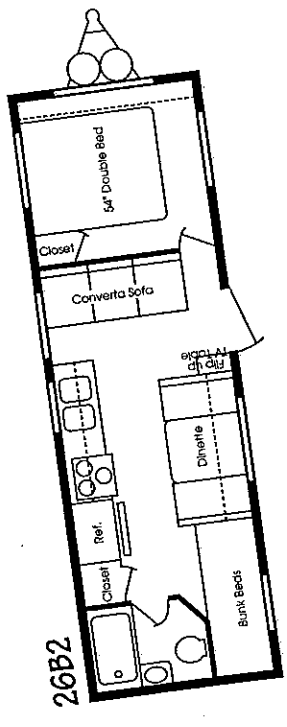
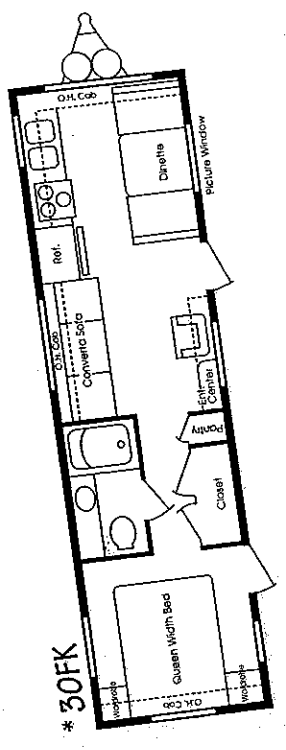
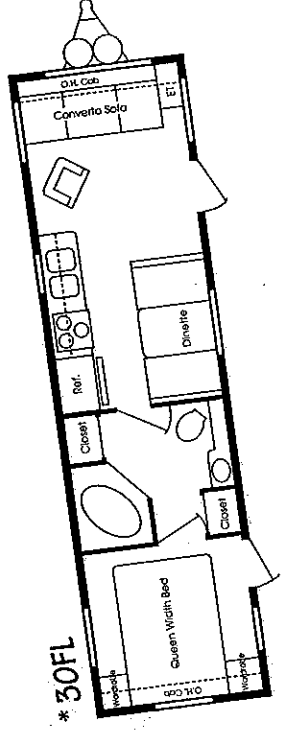
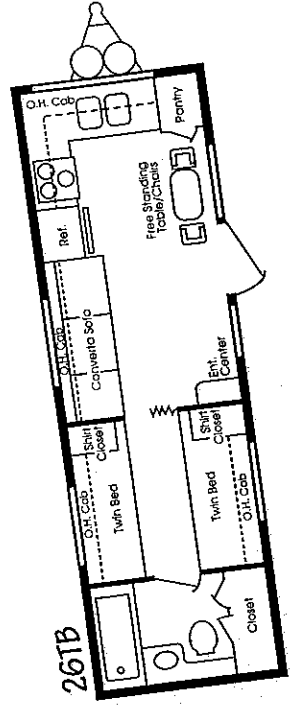
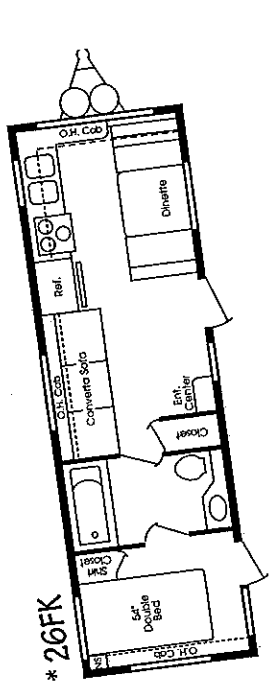


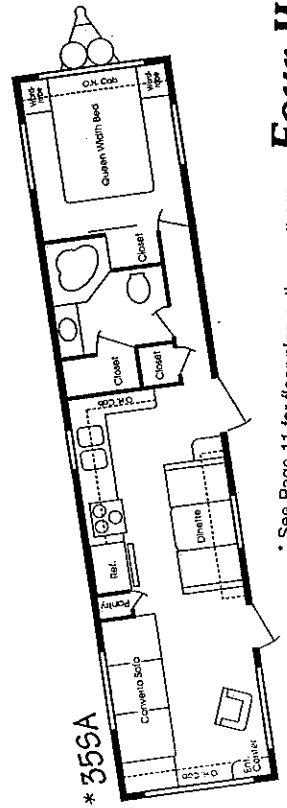
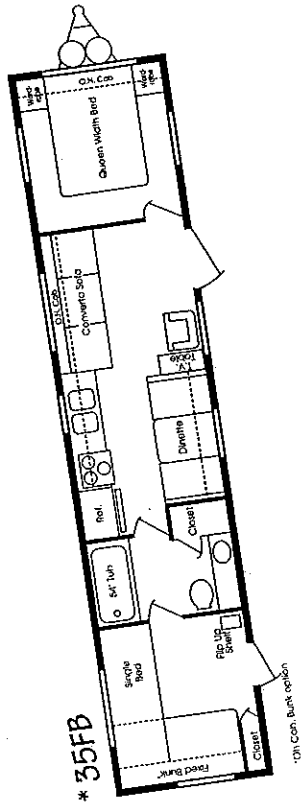
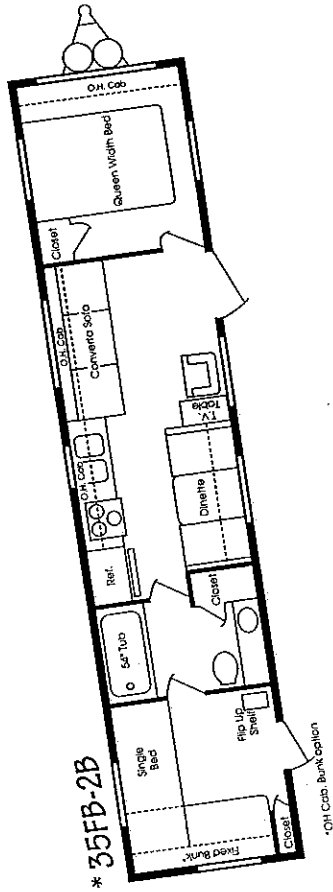
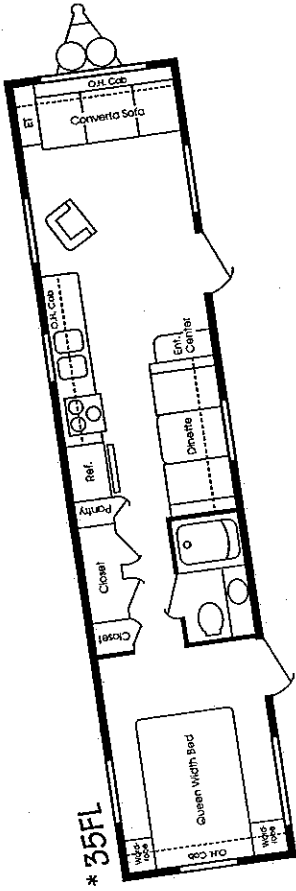
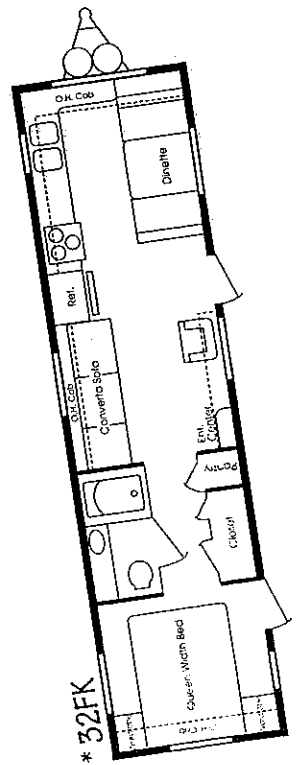
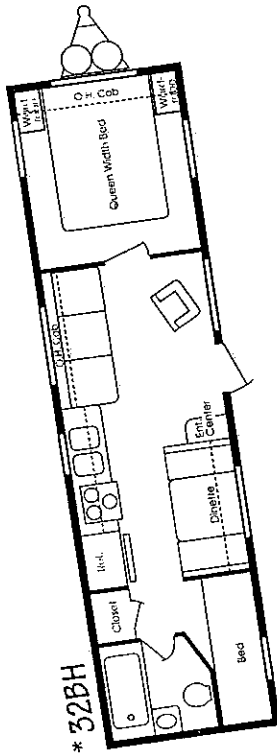
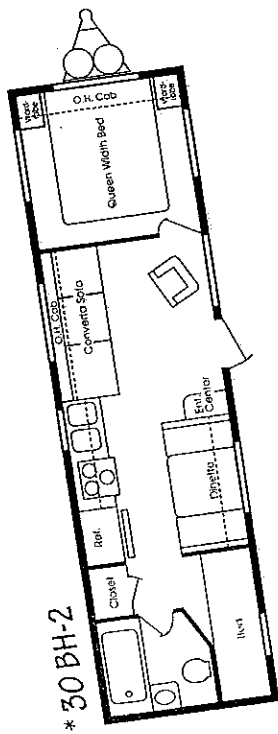
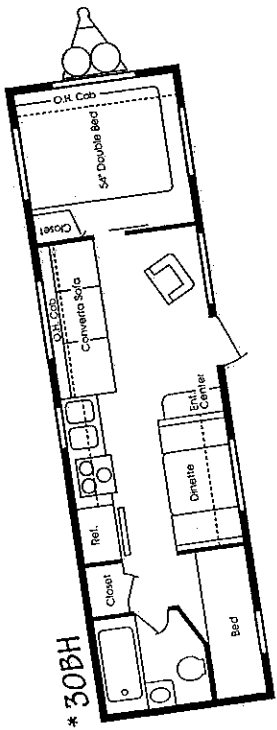
# TRAVEL TRAILERS

Four Winds offers the widest selection of floorplans in its class, so you're sure to find the one that's perfect for your family and your lifestyle. And our selection of slideouts and floorplan options allows you to customize your Four Winds to meet all of your needs.



# Four Winds





\* See Page 11 for floor plan option availability.

**Four Winds**



# Four Winds



\* See Page 11 for floor plan option availability.

# Travel Trailer

1996 Four Winds Travel Trailer Specifications																
18FD	18RB	22BH	22FD	22Q	24FB	24FK	24FLD	26SB	26FK	26B2	26FL	26FLD	26TB	30FK	30FL	30BH
2	2	3	2	2	3	3	2	2	3	3	3	2	2	3	3	4
194"	194"	234"	234"	234"	254"	254"	254"	274"	274"	274"	274"	274"	274"	314"	314"	314"
96"	96"	96"	96"	96"	96"	96"	96"	96"	96"	96"	96"	96"	96"	96"	96"	96"
460	435	555	513	480	535	609	700	885	558	504	711	775	748	796	719	500
3280	3105	3565	3302	3880	3865	3706	3850	3840	3907	4101	3894	3905	3897	4475	4551	4620
7000	7000	7000	7000	7000	7000	7000	7000	7000	7000	7000	7000	7000	7000	7000	7000	7000
3740	3540	4120	3815	4360	4400	4550	4725	4465	4605	4605	4680	4645	4645	5271	5270	5120
3720	3895	3415	3698	3120	3135	3294	3150	3160	3093	2899	3106	3095	3103	2525	2449	2380
ST205	ST205	ST205	ST205	ST205	ST205	ST205	ST205	ST205	ST205	ST205	ST205	ST205	ST205	ST205	ST205	ST205
75R15	75R15	75R15	75R15	75R15	75R15	75R15	75R15	75R15	75R15	75R15	75R15	75R15	75R15	75R15	75R15	75R15
C	C	C	C	C	C	C	C	C	C	C	C	C	C	C	C	C
4	4	4	4	4	4	4	4	4	4	4	4	4	4	4	4	4
7	7	7	7	7	7	7	7	7	7	7	7	7	7	7	7	7
60	60	60	60	60	60	60	60	60	60	60	60	60	60	60	60	60
30	30	30	30	30	30	30	30	30	30	30	30	30	30	30	30	30
20M	20M	20M	20M	20M	25M	25M	25M	25M	25M	25M	25M	25M	25M	31M	31M	31M
<b>Floorplan Options</b>																
Queen Bed	NA	NA	NA	NA	NA	NA	S	NA	NA	NA	NA	S	NA	S	S	NA
Double Bed #1	NA	NA	NA	NA	NA	NA	NA	S	S	NA	S	NA	NA	NA	NA	S
Double Bed #2	S		NA	NA	NA	SL	NA	NA	NA	NA	NA	NA	NA	NA	NA	NA
Twin Bed	NA	NA	O	NA	NA	NA	O	O	O	NA	O	O	S	O	O	O
Bunks over Twins w/Closet	NA	NA	NA	NA	NA	NA	NA	NA	NA	NA	NA	NA	NA	NA	NA	NA
Triple Bunks	NA	NA	NA	NA	NA	NA	NA	NA	NA	NA	O	NA	NA	NA	NA	NA
Garden Bath #2	NA	NA	NA	NA	NA	NA	NA	NA	NA	NA	NA	NA	NA	NA	NA	NA
Walk-through Bath	NA	NA	NA	NA	NA	NA	NA	NA	NA	NA	NA	NA	NA	NA	NA	NA
Shower Bath	NA	NA	NA	NA	NA	NA	NA	NA	NA	NA	NA	NA	NA	NA	NA	NA
Patio Door	NA	NA	NA	NA	NA	NA	NA	NA	NA	NA	NA	NA	NA	NA	NA	NA
Sofa Option	NA	NA	O	NA	NA	NA	NA	NA	NA	NA	NA	NA	NA	NA	NA	NA



1996 Fifth Wheel Specifications										
22RB	24CK	26RK	26BH	26RK-2	26RL	24RL	27RK	27RK	27BH	27LSM
3	3	3	3	3	4	3	3	3	4	4
22'11"	24'11"	26'11"	26'11"	26'11"	N/A	24'11"	27'11"	27'11"	27'11"	27'11"
96"	96"	96"	96"	96"	96"	96"	96"	96"	96"	96"
780	920	920	1020	900	N/A	740	960	1100	1120	1120
3235	4280	4620	4380	4800	N/A	5460	5620	5680	5540	5540
7000	7920	7920	8020	7900	N/A	7740	9760	9900	9920	9920
3765	2720	2380	2620	2200	N/A	1540	2220	2020	3260	3260
4015	5200	5400	5400	5700	N/A	6200	6580	6780	6660	6660
ST205	ST205	ST205	ST205	ST205	ST205	ST225	ST225	ST225	ST225	ST225
75R15	75R15	75R15	75R15	75R15	75R15	75R15	75R15	75R15	75R15	75R15
C	C	C	C	C	C	C	D	D	D	D
7	7	7	7	7	7	7	7	7	7	7
60	60	60	60	60	60	60	60	60	60	60
30	30	30	30	30	30	30	30	30	30	30
25M	25M	25M	25M	25M	25M	25M	25M	25M	25M	25M
Furnace w/12V Fan/Thermostat (BTU'S)										
Demand Water System w/12 V Pump (Approx. Gals.)										
Dual LP Tanks w/Regulator and Changeover (Gals.)										
Dual Waste Water Holding Tanks (Approx. Gals.)										
Tire Load Range										
Tire-Size										
Radial										
NCC—Net Carrying Capacity										
U/VW—Unloaded Vehicle Weight (approx)										
GWWR										
Axle Dry Weight (approx)										
Hitch Dry Weight (Approx.)										
Width w/o Awning										
Length										
Sleeping Area										

# Fifth Wheels

Slide Out Units

These weights are for our "Classic" series and are approximate. Other series may weigh slightly more or less. Please consult with your dealer for more information.

1996 Four Winds Travel Trailer Specifications										
19FD	19RB	22BH	22S	22Q	24FB	24FK	24FLD	26FK	26B2	
2	2	3	3	2	3	3	2	3	3	
19'4"	19'4"	23'4"	23'4"	23'4"	25'4"	25'4"	25'4"	27'4"	27'4"	
96"	96"	96"	96"	96"	96"	96"	96"	96"	96"	
560	600	600	N/A	460	560	780	880	840	760	
3320	3380	3780	N/A	3880	3980	3860	3860	4200	4140	
7560	7600	7600	N/A	7460	7560	7780	7880	7840	7760	
3880	3980	4380	N/A	4340	4540	4640	4740	5040	4900	
3680	3620	3220	N/A	3120	3020	3140	2260	2800	2860	
ST205	ST205	ST205	ST205	ST205	ST205	ST205	ST205	ST205	ST205	
75R15	75R15	75R15	75R15	75R15	75R15	75R15	75R15	75R15	75R15	
C	C	C	C	C	C	C	C	C	C	
4	4	4	4	4	4	4	4	4	4	
Axle Dry Weight Coupler Class Used										
Tire Load Range										
Tire-Size										
Radial										
NCC—Net Carrying Capacity										
U/VW—Unloaded Vehicle Weight (approx)										
GWWR										
Axle Dry Weight (approx)										
Hitch Dry Weight (Approx.)										
Width (w/out awning)										
Length										
Sleeping Area										

# Travel Trailer

FOUR WINDS

**FOUR WINDS**

**Double Slide Out**

26FL	26Q	28BH	28FK	30FK	30BH-2	32FK	35FB	26FL	26FK	31FK	31BH	33FK	36FB	36FK	36FL
27'4"	27'4"	27'4"	28'4"	31'4"	32'1"	35'1"	N/A	31'1"	31'1"	31'1"	31'1"	33'1"	36'1"	36'1"	36'1"
3	2	5	4	3	4	3	3	3	3	3	3	4	4	4	4
96"	96"	96"	96"	96"	96"	96"	96"	96"	96"	96"	96"	96"	96"	96"	96"
860	900	N/A	N/A	1100	560	980	900	1060	5700	5820	5920	6580	6260	1000	
4220	4020	N/A	N/A	4840	4900	4920	5500	4940	5700	5820	5920	6580	6260	1000	
7860	7900	N/A	N/A	8100	7560	7980	7900	N/A	8060	9820	9980	9720	9800	9800	
5080	4920	N/A	N/A	5940	5240	6400	N/A	6000	6720	6420	7100	7500	7260	7260	
2780	2980	N/A	N/A	2160	2080	1500	N/A	2060	3100	2980	2880	2220	2540	2540	
ST205	ST205	ST205	ST205	ST205	ST205	ST225	ST225	ST225	ST225	ST225	ST225	ST225	ST225	ST225	
75R15	75R15	75R15	75R15	75R15	75R15	75R15	75R15	75R15	75R15	75R15	75R15	75R15	75R15	75R15	
C	C	C	C	C	C	C	C	C	C	C	D	D	D	D	
4	4	4	4	4	3	3	N/A	4	3	3	4	3	4	4	
7	7	7	7	7	7	7	7	7	7	7	7	7	7	7	
60	60	60	60	60	60	60	60	60	60	60	60	60	60	60	
30	30	30	30	30	30	30	30	30	30	30	30	30	30	30	
25M	25M	N/A	N/A	N/A	N/A	31M	31M	31M	31M	31M	31M	31M	31M	31M	

27RK	30RK	33RK	35-2B	3	3	3	4	27'11"	30'11"	33'11"	35'11"	96"	1200	1360	1500	5780	6120	6580	6420	10000	10060	10160	10300	2380	3020	2680	2220	2380	6980	7380	7940	7920	ST225	ST225	ST225	75R15	75R15	75R15	75R15	D	D	D	D	7	7	7	7	90	90	90	30	30	30	35M	35M	35M
------	------	------	-------	---	---	---	---	--------	--------	--------	--------	-----	------	------	------	------	------	------	------	-------	-------	-------	-------	------	------	------	------	------	------	------	------	------	-------	-------	-------	-------	-------	-------	-------	---	---	---	---	---	---	---	---	----	----	----	----	----	----	-----	-----	-----

**Vehicle Loading**—Every effort has been made to provide the greatest number of options for the recreational vehicle owner. Along with these choices comes the responsibility to manage the loads that are imposed by the choices so that they remain within the manufacturer's specified chassis weight limits. Do not overload the recreational vehicle.

**Dry weights** based on standard features; optional equipment not included. Carrying capacity determined by subtracting dry gross weight from GVWR and includes fluids, options and cargo. Liquid capacities and weights are approximations only.

**Warning:** This information is intended as a guide only. Weights of individual vehicles may vary. Consult your Owner's manual for complete loading, weighing & towing instructions.