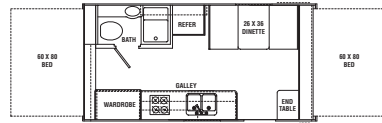




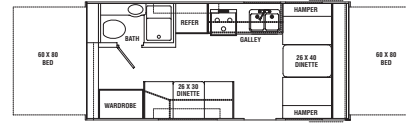
Cub 2002

endless possibilities

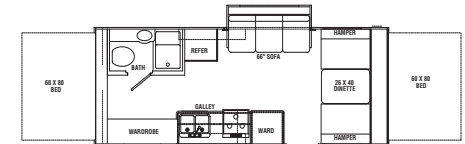




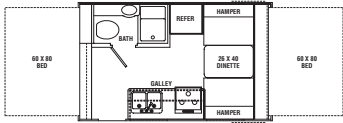
C195



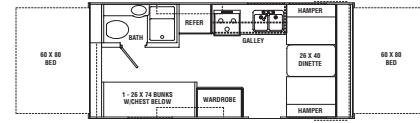
C210D



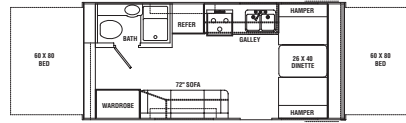
C230F



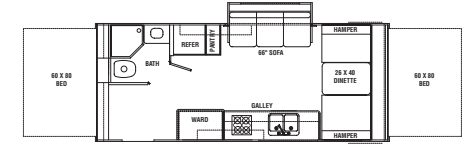
C160



C210



C210S



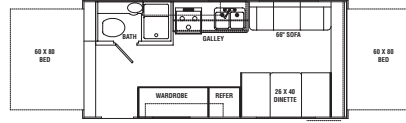
C230R



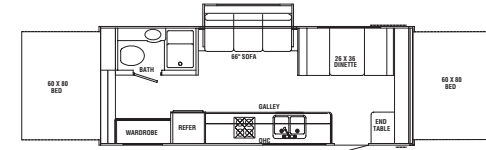
C190



C210B



C215



C236

Weight Chart

	C160	C190	C195	C210	C210B	C210D	C210S	C215	C230F	C230R	C236
GVWR (lbs.)	3180	4700	4660	4780	4780	4760	4740	4720	4780	4760	4720
Gross Dry Weight (lbs.)	2308	2928	2728	2968	3028	2988	2908	2888	3388	3368	3328
Carrying Capacity (lbs.)	872	1772	1932	1812	1752	1772	1832	1832	1392	1392	1392
Dry Hitch Weight (lbs.)	180	300	260	380	380	360	340	320	380	360	320
Traveling Length	16'	19'	19'	21'	21'	21'	21'	21'	23'	23'	23'
Expanded Living Length	20'6"	23'6"	23'6"	25'6"	25'6"	25'6"	25'6"	25'6"	27'6"	27'6"	27'6"
Width	7'6"	7'6"	7'6"	7'6"	7'6"	7'6"	7'6"	7'6"	7'6"	7'6"	7'6"
Height (Add 14" for AC)	8'1"	8'1"	8'1"	8'1"	8'1"	8'1"	8'1"	8'1"	8'1"	8'1"	8'1"
Fresh Water (gal.)	30	30	30	30	30	30	30	30	30	30	30
Gray Water (gal.)	36	36	36	36	36	36	36	36	36	36	36
Black Water (gal.)	26	26	26	26	26	26	26	26	26	26	26
LPG Capacity (2)(lbs.)	40	40	40	40	40	40	40	40	40	40	40
Radial Tire Size	14	13	13	13	13	13	13	13	13	13	13
Optional Awning Size	8'	11'	11'	13'	13'	13'	13'	13'	15'	15'	15'

Product information, specifications, and photography in this brochure were as accurate as possible at time of printing. Photographs may contain some features that are optional on your vehicle. Since we continually strive to improve our products, actual products may differ. Prices and specifications are subject to change without notice. All capacities are approximate and dimensions are nominal. Some features or options may be different or unavailable in Canada.

Standard and Optional Features

EXTERIOR

AL-KO Kober galvanized chassis
 AL-KO independent torsion suspension
 Galvanized single step
 Front mounted battery rack
 4 stabilizer jacks
 2-20 lb. LP bottles with tray and ABS cover
 26" radius entry door
 Upgraded exterior graphics
 Colored fender skirts
 Automotive D-seal windows
 Vinyl one piece seamless rubber roof (12 year warranty)
 Welded aluminum laminated frame (roof, floor and walls)
 Cavlar-15 tent (5 year warranty)
 Radius front and rear bunk doors with large drip rails
 Corrosion free laminated Darco underbelly

INTERIOR

Sub floor thermostatically controlled heated fresh water tank
 Residential grade linoleum

Upgraded interior design
 Upgraded interior lighting
 Extra large laminated fold down beds (60 x 80)
 5" thick dinette cushions
 Privacy curtain for bunks
 5 cubic foot gas electric refrigerator
 Mini blinds
 TV shelf
 Wallpaper borders
 Power roof vent in bathroom
 Oak mortise and tenon cabinet doors
 Pre-wired for A/C and roof vent
 Tent bed lights
 Fire extinguisher
 Smoke detector
 LP detector
 20,000 ducted BTU furnace
 6 gallon gas water heater with bypass
 Three burner cooktop
 Shower curtain
 Medicine cabinet
 Fiber link bathtub
 Towel storage bin in bathroom

Powder coated radius tent poles
 Safety cable on front and rear bunks
 Stereo prep 2 speakers, wire and antenna

OPTIONS

Heated waste holding tanks
 DSI water heater
 Spare tire with cover
 13.5 A/C
 Exterior cooktop
 Outside shower
 AM/FM CD with 2 speakers
 Microwave
 Oven with range
 TV antenna
 Awning
 Monitor panel
 Stove cover
 6 cubic foot double door refrigerator
 Bunk light with fan
 Water Filter System



Aero Coach, Inc.

305 Steury Avenue • Goshen, IN 46528
 574.534.1224 • www.aerocoachinc.com



This brochure is printed on recycled paper as part of Thor's corporate effort to minimize waste and conserve our natural resources. Providing safe, fuel-efficient recreational vehicles is Thor's way of further demonstrating our role as the industry leader in safeguarding our nation's environment.



"2 + 2" Warranty

Thor's Exclusive Full 2-Year Standard Warranty — We're so confident in the design and construction of our products that they are covered by Thor's exclusive Full 2-Year Standard Warranty: "hitch-to-bumper" coverage to protect your RV investment. The best protection in the RV industry - by far!