

Tradewinds LTC

Fabrics:



Mocha Sunset



Platinum Sands



Tropical Elegance

Woods:



Maple



Walnut



Cherry



7374 LTC

7391 LTC

Painted Exteriors:



Mocha Sunset



Platinum Sands



Tropical Elegance



Due to continued product improvement, National R. V., Inc. reserves the right to change materials, colors, specifications and prices at any time without notification. Copyright © 2002 by National R. V., Inc. 03/02

TRADEWINDS LTC FEATURES & SPECIFICATIONS

CHASSIS SPECIFICATIONS

Freightliner® XC Series Raised Rail Chassis
TRW TAS 65 Integral hydraulic power steering gear, 12,000 lb. rating with 50° turning angle and 20.4:1 steering ratio
Michelin® XRV radial tires 255/80R22.5 (G) on four polished 10 lug aluminum wheels and two steel inside duals
Service Brakes: Full air brakes (drums) with ABS; automatic heated air tank moisture ejectors; 15 x 4 front drums; 16.5 x 7 rear drums, S-cam style, automatic slack adjusters
Parking Brake: Spring applied, air release on rear drum brakes; push-pull lever control; automatic park brake
Leece-Neville® 160 Amp alternator
Two Alliance MF1031 1,500 CCA maintenance free chassis batteries
Neway® independent front air suspension and Neway® AD-200 20,000 lb capacity rear air suspension and electronic manual air dump
Tuned Bilstein® shock absorbers
Dana Spicer® driveline
Meritor® RS-19-145 drive axle with 4.88:1 drive ratio
100 gallon fuel tank dual fuel fill with remote mounted fuel/water separator
Cooling Package: Side mounted charge air cooler, radiator, and A/C condenser with variable speed hydraulic cooling fan
Remote mounted transmission oil cooler (water to oil)
Filter Minder® air intake restriction indicator
7,000 lb. Class III hitch receiver with skid bar and six pin electrical connector
3 years/50,000 miles chassis warranty
Cummins® ISC 8.3 liter, 350 HP @ 2,000 RPM and 1,050 lb.-ft. torque @ 1,400 RPM Pac Brake® exhaust brake
Allison® MH 3000, 6 speed automatic transmission with keypad electronic shifter with digital display

BODY CONSTRUCTION

Duraframe® patented steel sub floor construction
Steel framed laminated floor
Steel framed crowned laminated fiberglass roof
Steel framed laminated fiberglass high gloss walls
Custom painted three color full body exterior graphics with choice of three color packages
Molded, high gloss, full fiberglass caps with integrated front and rear bumpers
Soft touch interior ceiling material
Electric slide-out rooms
Fiberglass exterior storage compartment doors, insulated with integrated paddle latches and struts
Aluminum rear ladder

Convenience D-Ring mounts in basement storage compartments
Automotive undercoating as required
Steel insulated front bulkhead

COCKPIT FEATURES

Pioneer® AM/FM stereo with CD player, XM receiver and remote control
Driver and passenger gooseneck reading lights
Custom dash in high gloss walnut finish with full gauge package
Cockpit heater and air conditioner with dash controls
Convenience tray
Auxiliary driving lights
Pantographic windshield wipers
Power steering
Electronic cruise control
18" tilt and telescopic steering wheel
Roof mounted dual chrome trumpet air horns
Rear vision system with microphone
Painted to match power controlled heated exterior mirrors with power convex control
Power Gear® fully automatic leveling jacks
Passenger workstation with 12V receptacle and 110V receptacle
Aviation style sun visors
Cup holders
Two 2-speed dash fans
Electric stepwell cover
CB radio ready
Wraparound privacy curtain with easy reach wand

APPLIANCES & ACCESSORIES

RCA® 27" TV with front A/V jacks in cockpit
RCA® Hi-Fi VCR in cockpit
Multi-speaker TV sound
RCA® 19" TV with front A/V jacks in bedroom
10 cu. ft. double door refrigerator with icemaker and pantry
High output three burner cook top with flush mount Corian® range cover
GE® SpaceSaver convection microwave oven with carousel, built-in light and fan
Systems monitor panel
Cable TV hook-up and multiple telephone jacks
Wall mounted AM/FM stereo with CD, clock, alarm and inside temperature monitor in bedroom
Kingdome® automatic stationary satellite dish
Winegard® TV antenna

FURNITURE

Kustom Fit® monogrammed UltraLeather™
6-way power driver recliner seat with swivel base and integrated seatbelt

Kustom Fit® monogrammed UltraLeather™
passenger recliner seat with swivel base and integrated seatbelt
Kustom Fit® 74" Wonder-Bed® fabric sleeper sofa with slide-in armrests and drawer underneath
Freestanding Kustom Fit® fabric swivel recliner chair with footrest

INTERIORS

Throughout Coach

Maple paneling and doors
Solid wood raised panel cabinet doors and face framing
Deluxe overhead storage doors with telestrut hardware; positive catches on all other doors
Drawers with ball bearing roller guide design

Cockpit Area

Patterned floor mats

Living Area

Fabrica® patterned plush carpet with deluxe pad
Pleated day/night shades
Valances and lambrequins
Magazine rack
Freestanding Corian® topped dinette table with two high-back wooden chairs and two wooden folding chairs

Kitchen Area

Corian® kitchen countertop with Corian® sink cover
Corian® surface countertop extension (lounge slides only)
Wastebasket
Silverware organizer
Beveled mirror galley backsplash
Ceramic tile floor
Venetian blind and valance

Bath Area

Ceramic tile floor
Corian® surface bathroom lavatory top
Porcelain oval lavatory sink
Raised panel doors
Insulated skylight in shower
Towel bars
Medicine cabinet
Window in private toilet room
Residential style pocket doors
Residential toilet room door with hardware

Bedroom Area

Fabrica® patterned plush carpet with deluxe pad
Pleated day/night shades
Valances and lambrequins
Raised panel doors
"Beachcomber Premium" residential-style pillow top mattress
Queen bed slide-out

Coordinate bedspread, pillows and shams
Radius padded headboard
Nightstands with Corian® tops
Cedar lining in wardrobe
Rear wardrobe with mirrored sliding doors
Wall dresser with drawers and laundry hamper
Residential style closet rods

ELECTRICAL SYSTEMS & LIGHTS

50 Amp 120V distribution panel and cord
50 Amp shore power cord
Dual 21 watt solar panels
Onan® 6.5 kW LP generator
2,000 watt inverter/converter with remote on/off switch
Four 6V deep cycle house batteries
Slide-out battery tray
Two 760 CCA 12V maintenance-free chassis batteries
Battery disconnect switch
Porch light
Patio receptacle
Three water pump switches (kitchen, bath and service station)
Decorative overhead dining light
Cosmetic light in bathroom
Decorative lights in living area
Courtesy light at entry-door switch panel
Fluorescent lights in ceiling
Decorative indirect mood lights

PLUMBING & LPG SYSTEMS

Coach Exterior

Heated and insulated holding and water tanks
Manual dump valves
Pressurized water fill with regulator
Variable rate water pump
Water heater by-pass valve
Winterization antifreeze inlet to pump
Holding tank rinsing system (waste only)
Outside shower

Kitchen Area

Water filter in kitchen
10 gallon gas/electric water heater
Delta® single lever faucet with pullout sprayer

Bedroom/Bathroom Area

Porcelain toilet with sprayer
Clear glass shower enclosure with etched decorative design for privacy
One piece fiberglass tub and shower
Single lever brass faucet with crystal handle
Pre-plumbed for washer/dryer

SAFETY FEATURES

Fire extinguisher
Deadbolt lock on entrance door

12V GFI protected circuits (kitchen, bath and exterior)
Smoke, carbon monoxide (CO) and LPG detectors
Driver and passenger integrated three point lap and shoulder seatbelts
Egress window
Deluxe acrylic exterior assist handle

WINDOWS, DOORS & AWNINGS

Tinted dual pane windows
Power double entrance step with light and anti-skid
Tinted skylight in bathroom
Electric patio awning with metal cover*
Electric front entry door awning*
Slide-out topper awnings on living room, galley slide and bedroom slide*

VENTILATION

Dual 13,500 BTU Duo-Therm® low profile Penguin® air conditioners with in-ceiling ducting
35,000 BTU and 20,000 BTU furnaces
12V Fan-Tastic® Vent in bathroom
12V Fan-Tastic® Vent with wall thermostat and rain sensor in living area

OPTIONAL FEATURES

Exterior

Dual directional roll-out compartment storage tray
Manual living room and bedroom window awning package
Onan® 7.5 kW Quiet Diesel generator
Dual 13,500 BTU Duo-Therm® low profile Penguin® air conditioners with heat pumps, two-speed fans and in-ceiling ducting
Chrome power controlled heated exterior mirrors with power convex control

Throughout Coach

Walnut paneling and doors
Cherry paneling and doors

Cockpit Area

Pioneer® multi-disc CD changer
Douglas® tilt and telescoping steering column with 18" VIP® Smart Wheel
RCA® DVD with Dolby Digital 5.1 receiver and home theater speaker package

Furniture

Kustom Fit® monogrammed UltraLeather™
6-way power passenger recliner seat with swivel base, integrated seatbelt and power footrest
Kustom Fit® monogrammed UltraLeather™
6-way power extra-wide passenger recliner seat with swivel base, integrated seatbelt and power footrest
Kustom Fit® 74" UltraLeather™ Wonder-Bed® sleeper sofa with slide-in armrests and drawer underneath
Freestanding Kustom Fit® UltraLeather™ Euro-recliner with ottoman
Freestanding Kustom Fit® UltraLeather™ swivel recliner chair with footrest
Corian® topped booth dinette with slide-out storage drawers

Kitchen Area

GE Advantium® oven/microwave
12 cu. ft. side-by-side refrigerator with ice maker (delete slide-out pantry)

Bedroom/Bathroom Area

Combination washer/dryer
Thetford® electric porcelain toilet with sprayer

WEIGHTS (POUNDS)	7374	7391
Gross Vehicle Weight Rating	29,410 lbs.	29,410 lbs.
Gross Combined Weight Rating	36,410 lbs.	36,410 lbs.
Front Gross Axle Weight Rating	10,410 lbs.	10,410 lbs.
Rear Gross Axle Weight Rating	19,000 lbs.	19,000 lbs.
Unloaded Vehicle Weight	23,740 lbs.	24,180 lbs.
Maximum Carrying Capacity	5,670 lbs.	5,230 lbs.
Cargo Carrying Capacity	3,934 lbs.	3,494 lbs.
MEASUREMENTS	7374	7391
Wheelbase	228"	252"
Overall Length	36' 9"	38' 9"
Exterior Height (with Satellite)	12' 6"	12' 6"
Interior Height	79 1/2"	79 1/2"
Interior Width	98 1/2"	98 1/2"
Exterior Width	102"	102"
TANK CAPACITIES	7374	7391
Water Heater	10 gal.	10 gal.
Gray Tank	40 gal.	40 gal.
Black Tank	45 gal.	45 gal.
Fresh Water Tank(s)	95 gal.	95 gal.
LPG Tank (Volume W.C.)	69 gal.	69 gal.

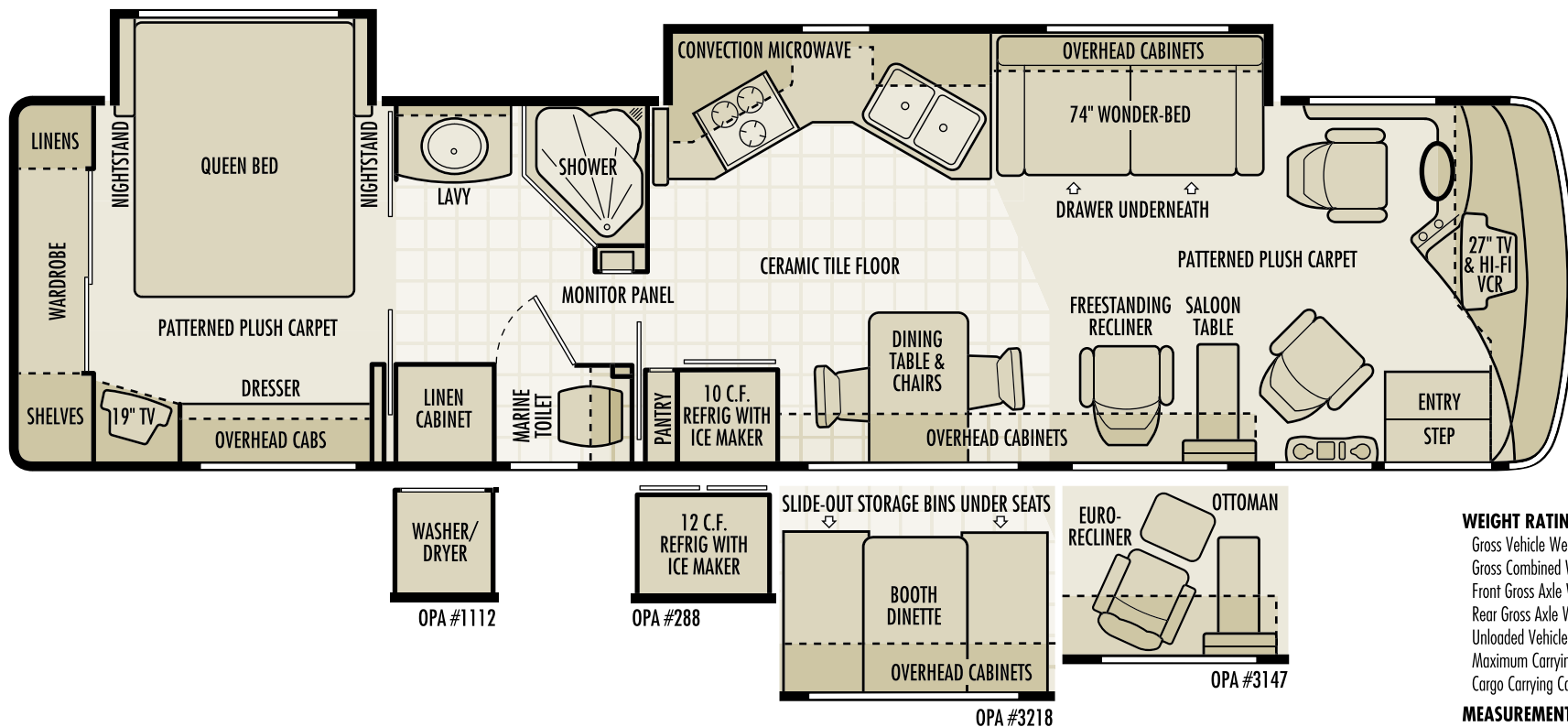
2003 INFORMATION SHEET

Tradewinds LTC

TRADEWINDS LTC 7374



TWO THOUSAND 3



WEIGHT RATINGS (Pounds)

Gross Vehicle Weight Rating	29,410
Gross Combined Weight Rating	36,410
Front Gross Axle Weight Rating	10,410
Rear Gross Axle Weight Rating	19,000
Unloaded Vehicle Weight	TBD
Maximum Carrying Capacity	TBD
Cargo Carrying Capacity	TBD

MEASUREMENTS

Wheelbase	228"
Overall Length	36' 9"
Overall Height (w/satellite dome)	12' 6"
Interior Height	79 1/2"
Interior Width	98 1/2"
Exterior Width	102"

TANK CAPACITIES (Gallons)

Fuel (diesel)	100
Fresh Water Tank	95
Grey Tank	40
Black Tank	45
Water Heater	10
LPG Tank (volume)	69

CHASSIS

Make/Model	Freightliner X-C Series
Design	Rear Engine/Raised Rail
Axle Ratio	4.88:1
Tires	255/80R22.5 (G)
Service Brakes	Full Air/Drums with ABS
Shocks	Tuned Bilstein
Alternator	160 Amp Leece-Neville
Warranty	3 Years/50,000 Miles

ENGINE

Make/Model	Cummins ISC
Displacement	8.3 Liters
Peak HP	350 HP @ 2,000 RPM
Peak Torque	1,050 ft/lbs @ 1,400
Exhaust Brake	Pac Brake
Warranty	5 Years/100,000 Miles

TRANSMISSION

Make/Model	Allison MH 3000
Type	6-Speed Automatic w/OD
Shifter	Electronic keypad
Warranty	3 Years/Unlimited Miles



NOTE: Floorplans and features are subject to change without notice.

© Copyright 03/2002 National R.V., Inc., 3411 N. Perris Boulevard, Perris, CA 92571 •

TLTC 7374

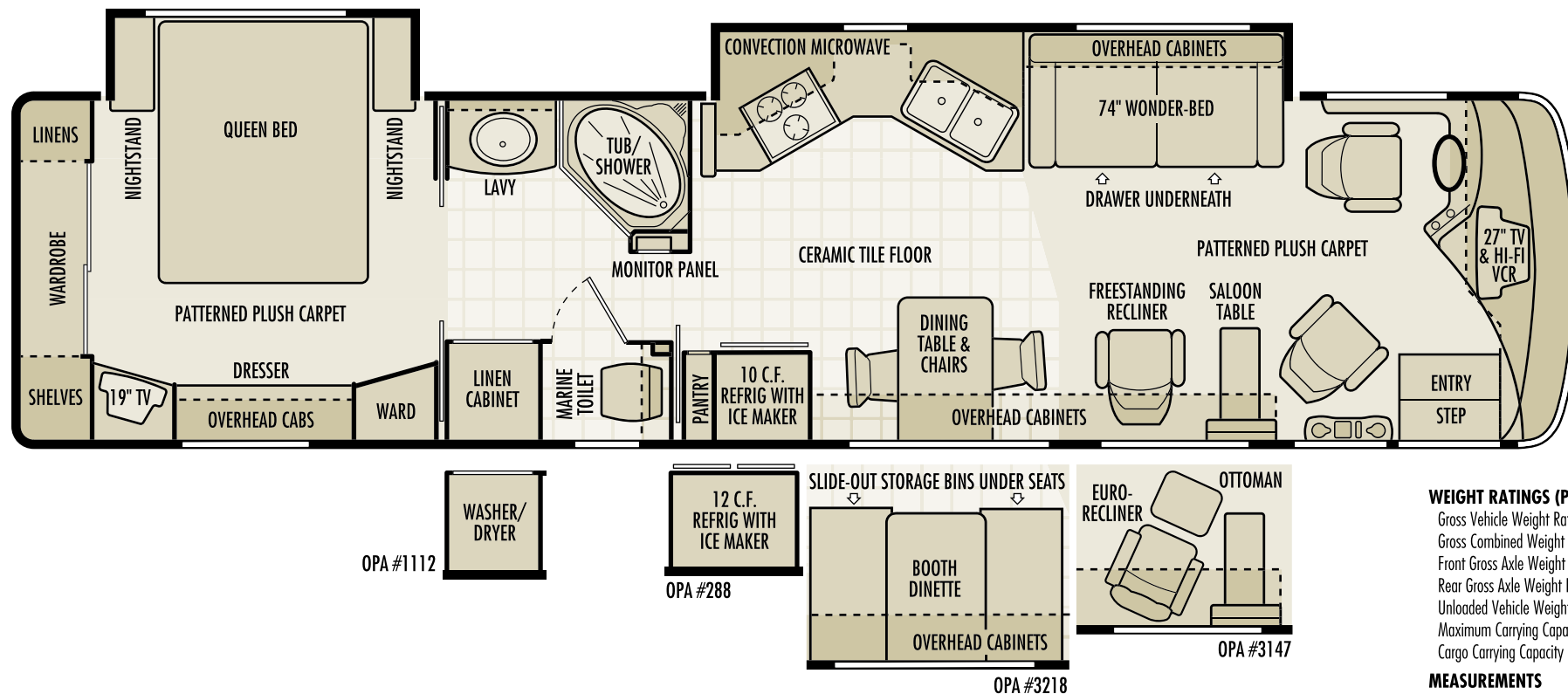
2003 INFORMATION SHEET

Tradewinds LTC

TRADEWINDS LTC 7391



TWO THOUSAND 3



WEIGHT RATINGS (Pounds)

Gross Vehicle Weight Rating	29,410
Gross Combined Weight Rating	36,410
Front Gross Axle Weight Rating	10,410
Rear Gross Axle Weight Rating	19,000
Unloaded Vehicle Weight	24,180
Maximum Carrying Capacity	5,230
Cargo Carrying Capacity	3,494

MEASUREMENTS

Wheelbase	252"
Overall Length	38' 9"
Overall Height (w/satellite dome)	12' 6"
Interior Height	79 1/2"
Interior Width	98 1/2"
Exterior Width	102"

TANK CAPACITIES (Gallons)

Fuel (diesel)	100
Fresh Water Tank	95
Grey Tank	40
Black Tank	45
Water Heater	10
LPG Tank (volume)	69

CHASSIS

Make/Model	Freightliner X-C Series
Design	Rear Engine/Raised Rail
Axle Ratio	4.88:1
Tires	255/80R22.5 (G)
Service Brakes	Full Air/Drums with ABS
Shocks	Tuned Bilstein
Alternator	160 Amp Leece-Neville
Warranty	3 Years/50,000 Miles

ENGINE

Make/Model	Cummins ISC
Displacement	8.3 Liters
Peak HP	350 HP @ 2,000 RPM
Peak Torque	1,050 ft/lbs @ 1,400
Exhaust Brake	Pac Brake
Warranty	5 Years/100,000 Miles

TRANSMISSION

Make/Model	Allison MH 3000
Type	6-Speed Automatic w/OD
Shifter	Electronic keypad
Warranty	3 Years/Unlimited Miles



NOTE: Floorplans and features are subject to change without notice.

© Copyright 03/2002 National R.V., Inc., 3411 N. Perris Boulevard, Perris, CA 92571 •

TLTC 7391