

SIGNATURE2005



SIGNATURE2005



WRITE YOUR OWN STORY.

Triple E's Signature is here to let you pursue your dreams on your own terms. From its smartly designed cockpit that converts into extra living area to its surprisingly spacious bedroom with large mirrored double door closet, Signature expands your ideas of what a motor home can be. And, because Triple E knows that comfort is in the details, we've added numerous little extras such as oak cabinetry (optional maple), a water purifier faucet in the galley and halogen reading lamp above the bed to make your home on the road a, well, true home on the road.

New Signature Features For 2005 Include:

- Alcoa Aluminum Wheels
- Solid Surface Countertops — Standard
- Porcelain Sink in Lavatory
- Caterpillar C7-330 HP Turbo Diesel Engine





You'll enjoy the extra touches in Signature's spacious bathroom such as the neo angle shower, glass door and overhead skylight.

As comfortable as the one you have at home, Signature's master bedroom features a makeup table with optional stool, day night shades with black out on the windows and an extra spacious wardrobe.

Signature's cockpit maximizes available space by easily converting into a living room. In addition to the plush comfort of the captain's and passenger chairs, a recliner is included as standard on select models.





Chart a course for adventure from Signature's ergonomically contoured, ultra leather captain's chair. Its six way power adjustment lets you find the comfort spot that's right for you.

Signature's residential quality 60" x 80" queen bed with decorative bedspread features halogen reading lights above bed. Windows on each end of the bedroom slide out allow unrestricted flow of fresh air through the room.

Yes, you can take it with you. Signature allows you to personalize your living environment with a number of optional features that can make life on the road that much more homelike including a refreshment center, perfect for entertaining and an exterior TV (mounted on a slide out tray in the baggage compartment).



A solid oak or maple medicine cabinet with vanity lighting nicely finishes the bathroom.



The hutch area with under cabinet halogen lights creates a beautiful focal point in Signature's galley. The large pullout pantry allows you to keep your cans, bottle and jars stored neatly.



The galley is completed with an optional solid oak or maple wall mount table with four solid wood chairs. In addition, choose the extra leaf with two additional folding chairs.



COLOUR OPTIONS

You can personalize both Signature's interior and exterior schemes. First select either Misty Meadow or Sahara Sunset for your exterior (both are available in standard and full paint options). Then select your interior design scheme from the four available. While we've provided two recommended interior design options for each exterior motif, any of the four interior designs can be selected for your vehicle. Each interior motif has been artfully created by Triple E's professional interior designers to skillfully coordinate upholstery, carpeting and window treatments for an overall effect that is both warm and inviting.

Visit www.tripleerv.com for more information on available options.

Exterior		MISTY MEADOW		SAHARA SUNSET	
STANDARD					
OPTIONAL FULL PAINT					
Interior		KEY WEST	GRECIAN BRONZE	JAMAICAN SAND	BRAZILIAN SPICE
SOFA					
CAPTAIN CHAIRS					
DINING CHAIRS					
BEDSPREAD					
CARPET					

Wood Options

AUTUMN OAK



GOLDEN MAPLE

INTERIOR COMFORT AND EXTERIOR PROTECTION

Born of our northern heritage, Triple E's exclusive Climate Guard® system is quite simply the best interior comfort and exterior protection package available in the recreational vehicle industry today. The Climate Guard® system has been developed with today's motorhome enthusiast in mind. It provides year round climate controlled comfort for passengers as well as built in protection for the motorhome itself, ensuring years of trouble free operation and enjoyment.



The major considerations in building a top quality motorhome are long lasting beauty coupled with the ability to stand up to all weather conditions. The coach is an aluminium and steel framed structure with vacuum bonded gel coat fibreglass sidewalls and a domed roof finished with a seamless FRP Flexroof.

INTERIOR COMFORT

- Dometic® roof air conditioners, ducted front to rear, control the temperature throughout the coach.
- High output chassis air conditioner provides travelling comfort.
- Electronic ignition furnace designed to maintain requested interior temperatures through extreme exterior temperatures.
- High output chassis heater for quick windshield defrost.
- A rear auxiliary automotive heater – complete with electric coolant valve – makes travel comfortable while heating the fresh water and holding tank compartments.
- Vacuum bonded, aluminium framed, insulated sidewall and roof construction provides structural strength and maintained warmth throughout the coach.
- Coach windows are designed with a dual pane construction – impeding the transfer of cold to make the interior of the window warmer and less subject to condensation.
- Optional insulated vent covers provide superior insulation for the fantastic fans and roof vents.



EXTERIOR PROTECTION

- Scratch and hail resistant gel coat fibreglass sidewalls with all weather exterior finish are easy to maintain and will not rust, pit, or fade.
- A domed, seamless, insulated, one piece FRP Flexroof promotes quick water run off and minimizes exterior maintenance.
- Urethane undercoating protects against dust and moisture and reduces stone and road noise.
- Steel enclosed, fibreglass insulated and heated fresh water and holding tanks assure extreme cold climate performance for your plumbing system. Tanks are heated from two different sources – the motorhome's ducted furnace while parked and the rear auxiliary automotive heater when travelling.
- Winterization system complete with potable antifreeze pickup kit allows you to easily drain tanks and fill water lines with potable antifreeze.
- Steel, insulated, and sealed firewall protects the driver and passengers from the outside elements.
- Additional ½" thermal break insulation beyond the standard 1" Styrofoam block insulation separates the climate controlled interior from the outside elements.



FLOOR

- 1 One Piece Woven Poly-Propylene Underbelly
- 2 ¾" Plywood
- 3 Tubular Steel Framing (Welded)
- 4 Styrofoam Filled Wall Support Plates
- 5 1" Block Styrofoam Insulation
- 6 ½" Plywood
- 7 Carpet Underlay
- 8 Carpeting (Floor covering)



SIDEWALLS

- 1 Seamless Gelcoat Fibreglass Exterior
- 2 Luan Structural Backer
- 3 Aluminium Framing (Welded)
- 4 Styrofoam Filled Floor and Roof Plate
- 5 1" Block Styrofoam Insulation
- 6 ½" Styrofoam Thermal Break Insulation
- 7 Interior Decorative Luan Wall Panels

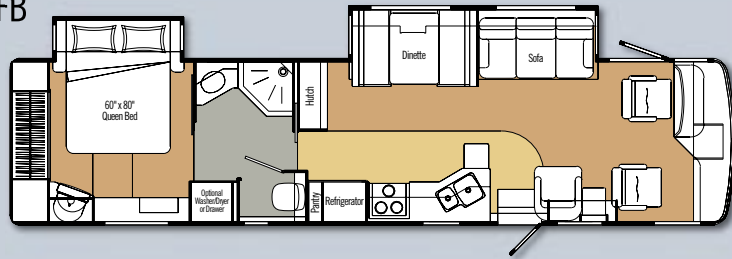


ROOF

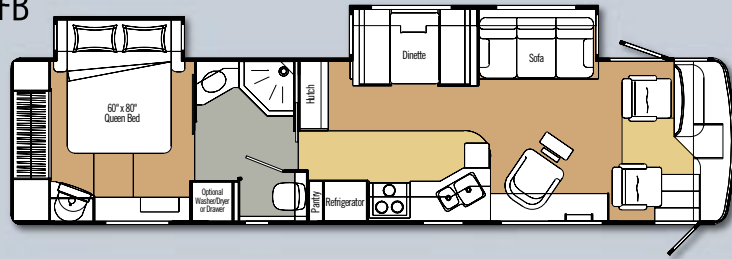
- 1 One Piece FRP Flexroof
- 2 Luan Backer
- 3 Aluminium Roof Truss
- 4 Styrofoam Filled Roof Truss Supports
- 5 1½" Block Styrofoam Insulation
- 6 Enclosed/Insulated Climate Control Ducting
- 7 2" Block Styrofoam Thermal Break Insulation
- 8 ¾" Plywood
- 9 Padded Vinyl Headliner

FLOOR PLANS

A3801FB



A3802FB



A3803FGB

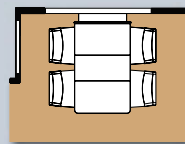
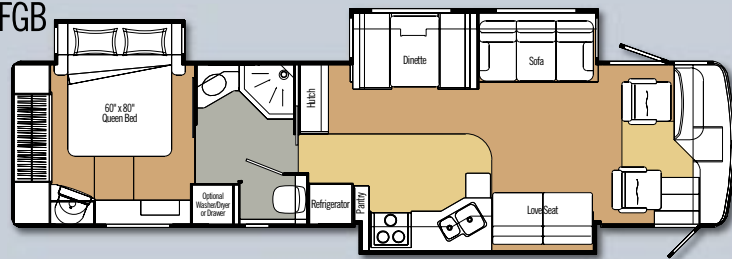


TABLE OPTION 1

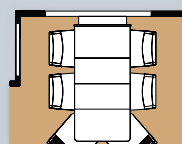


TABLE OPTION 2



SPECIFICATIONS

SIGNATURE 2005

	A3801FW	A3802FW	A3803FB
GVWR – lbs. (kg)	29,410 (13 338)	29,410 (13 338)	29,410 (13 338)
UVW – lbs. (kg)	23,435 (10 630)	23,531 (10 673)	23,875 (10 829)
NCC – lbs. (kg)	5,975 (2 710)	5,878 (2 667)	5,535 (2 510)
Wheelbase – in. (mm)	242") (6 147)	242") (6 147)	242") (6 147)
Length – ft. (mm)	37' 11" (11 557)	37' 11" (11 557)	37' 11" (11 557)
Width – ft. (mm)	8' 4" (2 534)	8' 4" (2 534)	8' 4" (2 534)
Height* – ft. (mm)	12' 1" (3 683)	12' 1" (3 683)	12' 1" (3 683)
Water Tank Capacity** – U.S. gal. (L)	102 (386)	102 (386)	102 (386)
Holding Tank (Grey) Capacity – U.S. gal. (L)	57 (216)	57 (216)	57 (216)
Holding Tank (Black) Capacity – U.S. gal. (L)	57 (216)	57 (216)	57 (216)
Fuel Capacity – U.S. gal. (L)	100 (379)	100 (379)	100 (379)
Propane Capacity – U.S. gal. (L)	32 (121)	32 (121)	32 (121)

*Includes A/C **Includes 10 gal. water heater

GVWR (GROSS VEHICLE WEIGHT RATING)

The maximum permissible weight of this motorhome. The GVWR is equal to or greater than the sum of the unloaded vehicle weight (UVW) plus the net carrying capacity (NCC).

UVW (UNLOADED VEHICLE WEIGHT)

The weight of the motorhome as built at the factory with full fuel, engine oil, and coolants. The UVW does not include cargo, fresh water, LP gas, occupants, factory or dealer installed accessories.

NCC (NET CARRYING CAPACITY)

The maximum weight of all occupants, including the driver, personal belongings, food, fresh water, LP gas, tools, tongue weight of towed vehicle, factory and dealer installed accessories, etc., that can be carried by this motorhome. (NCC is equal to or less than GVWR minus UVW.)

Please see your dealer for weights of factory installed options.

STANDARDS AND OPTIONS

	A3801FB	A3802FB	A3803FGB
VEHICULAR			
Air Brakes with Automatic Slack Adjusters	S	S	S
Air Conditioner – Chassis	S	S	S
Air Horns	S	S	S
Air Suspension with Bilstein Shocks	S	S	S
Alternator 160 Amp	S	S	S
Block Heater (1,000 W) with Switch in Bedroom	S	S	S
Bumper – Integrated Steel Reinforced Fibreglass Bumpers	S	S	S
Chassis – Freightliner with Caterpillar C7, 330 HP Turbo Diesel (XC) Raised Rail	S	S	S
Compass/Thermometer – Dash Mounted Directional Compass with Exterior Temperature	0	0	0
Cruise Control	S	S	S
Door – Driver Door with Power Window	S	S	S
Exhaust Brake	S	S	S
Fans – Chrome Cockpit Ventilating with Dash Switch	0	0	0
Fuel Fill – Concealed Locking Fuel Fill Access on Both Sides	S	S	S
Headlights – Halogen Styled	S	S	S
Hitch – Trailer Hitch Receiver with wiring and plug, 10,000 lb.	S	S	S
Jacks – HWH Automatic Levelling System with Auto Air Dump	S	S	S
Light – High Mount Stoplight, LED Long Life	S	S	S
Lights – Halogen Automotive Driving Lights	S	S	S
Mats – Driver/Passenger (on Mid Entry Models) Floor Mats	S	S	S
Mirrors – Heated Remote Power Mirrors	S	S	S
Mud Guard – Monogrammed Triple E Rear Mudguard	0	0	0
Rust Protection	0	0	0
Slide Out – Flush Floor HWH Hydraulic Slide Out System in Living Area with Electric Travel Locks	S	S	S
Steering Wheel – Tilt/Telescopic	S	S	S
Switch – Battery Boost Switch (Coach to Chassis Batteries)	S	S	S
Switch – Battery Selector Switch for Radio	S	S	S
Tires – Michelin Radial, 255/80R22.5XRV	S	S	S
Transmission – Allison 3000MH Six Speed Automatic with Lock Up	S	S	S
Transmission Cooler	S	S	S
Transmission Temperature Gauge	S	S	S
Undercoating – Automotive Type	S	S	S
Wheels – Alcoa Aluminium	S	S	S
Wipers – Wet Arm Windshield Wipers with Intermittent Function	S	S	S
CONSTRUCTION			
Baggage Doors – Aluminium Baggage Doors with Gas Struts and Slam Latch	S	S	S
Cargo Slide – Mounted in Forward Baggage Bay (N/A with Freezer and Exterior TV)	0	0	0
Cargo Slide – Mounted in Rear Baggage Bay	0	0	0
Gelcoat Fibreglass Moulded Front and Rear Mask	S	S	S
Lined and Lighted Baggage Compartments	S	S	S
Roof – Domed Kevlar FRP Flexroof	S	S	S
Steel Cab Floor, Firewall and Dash Structure	S	S	S
Vacuum Bonded Aluminium Framed Insulated Sidewall and Roof Construction with Thermal Break	S	S	S
Vacuum Bonded Gelcoat Fibreglass Sidewalls	S	S	S
Vacuum Bonded Steel Framed Insulated Floor Construction	S	S	S
Windows – Thermal Pane	S	S	S

	A3801FB	A3802FB	A3803FGB
EXTERIOR			
Diamondshield® Paint Protection Film – Invisible Bra	0	0	0
Door – Screened Entry with Deadbolt Lock	S	S	S
Exterior Shower	S	S	S
Handle – Entry and Driver Door Assist Handles (Interior Mounted)	-	S	S
Handle – Monogrammed Exterior Entry Handle	S	-	-
Ladder – Exterior Ladder with Detachable Lower Section	S	S	S
Light – Scare Light	S	S	S
Lights – Docking Lights in Rear Bumper	S	S	S
Paint – Full Body Exterior Paint with Clear Coat and Vinyl Graphics	0	0	0
Step – Electric Retractable Entry Step	S	S	S
INTERIOR			
Bedsread – Decorative Bedsread and Throw Pillows	S	S	S
Blinds – Drivers and Passengers Side Roller Blinds	S	S	S
Cabinetry – “Golden Maple” Cabinetry with Maple Fridge Insert	0	0	0
Cabinetry – Solid Oak Cabinet Face Framing	S	S	S
Ceiling – Domed with Padded Vinyl Headliner	S	S	S
Cover – Pneumatic Powered Front Step Cover	-	S	S
Covers – Insulated Vent Covers	0	0	0
Detectors – Electronic Smoke, LP and CO	S	S	S
Doors – Solid Oak Raised Panel Cabinet Doors	S	S	S
Drawers – Drawer Option in Washer Dryer Cabinet (N/A with Washer/Dryer Option)	0	0	0
Drawers – Dual Roller Glide Drawers with Travel Lock	S	S	S
Fire Extinguisher – Dry Chemical	S	S	S
Flooring – Ceramic Floor Tile in Galley, Lavatory and Entrance (Front Door Models) with Carpet Upgrade in Living and Bedroom Area	0	0	0
Flooring – Wall to Wall Carpeting in Living and Bedroom Areas	S	S	S
Latches – Snap Latches on Galley, Lavatory Overhead Cabinets and Large Wardrobe Doors.	S	S	S
Lighting – Fluorescent Aisle Lighting with Halogen Lights under Cabinets above Coach and Bed	S	S	S
Lighting – Three Way Switched Interior Lights (Door, Dash and on Light)	S	S	S
Lights – Courtesy Floor Lamps	S	S	S
Safe – Keylock Safebox	0	0	0
Shades – Day/Night Pleated Shades with Bedroom Blackout	S	S	S
Skylight with Blind in Living Area	0	0	0
Slide Out – Bed Slide Out with Rear Wardrobe	S	S	S
Storage – Easy Under Bed Storage and Engine Access with Gas Struts	S	S	S
Sun Visor – Power Centre Sun Visor with Switch on Dash	0	0	0
Sun Visor – Power Driver’s and Passengers Sun Visor with Switch on Dash	0	0	0
Thermostatically Controlled Fan – Bedroom (N/A with Dual Roof Air Option)	S	S	S
Tray – Passenger’s Computer Tray	0	0	0
FURNITURE			
Booth Dinette – Wrapped Laminated Cushions with Slide Out Drawers and Solid Surface Edged Table	S	S	S
Cabinet – Refreshment Centre (6 Bottle) (with Standard Recliner only)	0	0	-
Chair – Ultra Leather Recliner with Flip Table on Passenger Side	S	S	-
Hide-A-Bed – Cloth Hide-A-Bed with Air coil Mattress with 110 Volt air Pump on Driver’s Side	0	0	0
Mattress – Residential Quality Queen	S	S	S
Mattress – Upgrade	0	0	0
Seat – Ultra Leather Drivers Captain Chair with 3 Point Seat Belts and 6-Way Power	S	S	S
Seat – Ultra Leather Passenger Captain Chair with 3 Point Seat Belt	S	S	S

	A3801FB	A3802FB	A3803FB
FURNITURE (CONTINUED)			
Seat – Upgrade to 6-Way Power Passenger Seat (3 Point Belt) with Power Foot Rest	0	0	0
Sofa – Cloth Designer Series Easybed on Driver's Side with Flip Up Seat and Bayonet Arms	S	S	S
Sofa – Ultra Leather Love Seat On Passenger's Side	0	0	S
Stool – Stool for Make up Table	0	0	0
Table (Option 1) – Solid Wood Wall Mount Table with 4 Solid Wood Chairs with One Leaf in Lieu of Booth Dinette	0	0	0
Table (Option 2) – Two Extra Folding Chairs with Second Leaf for Table	0	0	0
GALLEY			
Cook Top – Recessed with High Output Burners	S	S	S
Countertop – Solid Surface Counter, Stainless Steel Sink with Flush Sink Covers	S	S	S
Cover – Recessed Bi-Fold Range Cover	S	S	S
Flooring – High Pressure Wood Look Laminate Floor to Match Interior Wood Choice	S	S	S
Micro/Convection Oven – (OTR) with 110 Volt Range Hood and Light	S	S	S
Oven – LP Gas	0	0	0
Refrigerator – Dometic LP/Electric 10 cu. ft 2 Door with Ice Maker (10 cu. ft.)	0	0	0
Refrigerator – Dometic LP/Electric 8 cu. ft. with Temp Control	S	S	S
Refrigerator Inserts – Raised Sculptured Solid Oak Fridge Inserts	S	S	S
LAVATORY			
Cabinet – Oak Medicine Cabinet with Mirror	S	S	S
Fan – Thermostatically Controlled (Non Reversible) Ceiling Fan in Lavatory or Toilet Room	-	S	S
Fan – Thermostatically Controlled (Non Reversible) Ceiling Fan in Shower Area	-	-	S
Shower – Fibreglass Neo Angle Shower with Glass Doors	S	S	S
Sink – Porcelain Sink in Lavatory	S	S	S
Skylight – Shower Compartment	S	S	S
Toilet – Sealand Traveller Lite, China, Foot Flush	S	S	S
Window – with Valance and Venetian Blind in Toilet Room	S	S	S
ENTERTAINMENT			
CB Antenna – includes Coax Lead in under Dash	0	0	0
CD Changer – 10 Stack CD Changer (N/A with AM/FM/Cassette/CD)	0	0	0
DVD/VCR Combination Unit	0	0	0
Master Control – Audio/Video Master Control Switch Box	S	S	S
Pre-Wire – Satellite Dish (with 12 Volt Power and 110 Volt)	S	S	S
Satellite Dish – KVH LF In Motion without Receiver	0	0	0
Satellite Dish – KVH SF Automatic without Receiver	0	0	0
Satellite Dish – Winegard with Electronic Elevation Sensor	0	0	0
Stereo – AM/FM CD Stereo in Bedroom with Alarm Clock	0	0	0
Stereo – AM/FM Weather Band Receiver with Cassette/CD Player with Big Button	0	0	0
Stereo – AM/FM Weather Band Receiver with CD Player in Dash with Big Button	S	S	S
Stereo – DHS Mobile Theatre System – 5 Channel Stereo with Subwoofers	0	0	0
Stereo – Exterior AM/FM – CD Stereo with Shielded Speakers	0	0	0
Telephone and Cable TV Hook-Up – Exterior	S	S	S
TV – AC 20" Exterior TV in Baggage Compartment with SlideOut Tray	0	0	-
TV – AC 20" Colour Stereo TV with Remote in Bedroom	S	S	S
TV – AC 20" Colour Stereo TV with Remote in Overhead Cabinet	S	S	S
TV – AC 32" Flat Screen Colour Stereo TV with Remote in Entertainment Cabinet In Lieu of 20" TV in Front Overhead Console	0	0	0
TV Antenna – Roof Top Retractable Antenna with Booster with Dash Mounted "Antenna Up" Light	S	S	S

	A3801FB	A3802FB	A3803FB
HEATING VENTILATING AND AIR CONDITIONING			
Air Conditioner – Dual Ducted (2) 13,500 BTU with Heat Strip	S	S	S
Fan – Thermostatically Controlled Fan in Living Area	0	0	0
Furnace – 40,000 BTU Central Furnace with Electronic Ignition	S	S	S
Heater – Dual Rear Auxiliary Automotive Heaters with Electric Valve	S	S	S
ELECTRICAL			
Alarm System with Motion Detector	0	0	0
Batteries – Deep Cycle Coach Batteries, 2 x 6 volt	S	S	S
Battery Disconnect – Chassis Batteries	S	S	S
Bidirectional Isolator Relay Delay (BIRD) Battery Charging	S	S	S
Converter – 120/12 Volt with Charger and Changeover Relay	S	S	S
Generator – 5.5 KW Onan Quiet Diesel on Slide Out Tray with Dash Mounted Hour Meter	S	S	S
Generator – 7.5 KW Onan Quiet Diesel on Slide Out Tray with Dash Mounted Hour Meter	0	0	0
Inverter – 2000 Watt Inverter with 100 Amp Charger with Freedom Remote with Upgrade to 4 x 6 Volt Batteries	0	0	0
Panel – 50 Amp Electrical Service with Energy Management System	S	S	S
Power Cord Reel – 50 Amp Power Cord Reel	0	0	0
Pre-Wire – 110 Volt/12 Volt Receptacles in Baggage Compartment (Freezer Prep)	S	S	S
Pre-Wire – For Solar Panel	S	S	S
Switch – 3-Way Water Pump Switch	S	S	S
Switch – Electronic Battery Disconnect (Coach Batteries)	S	S	S
PLUMBING AND LP SYSTEMS			
Black Tank Flush System	S	S	S
Holding Tanks – Enclosed and Insulated, Dual Heated Waste Holding Tanks	S	S	S
LP Tank – Easy Access Propane Tank	S	S	S
Prep Package for Washer/Dryer	S	S	S
Systems Monitor Panel	S	S	S
Valve – Water Heater By-Pass	S	S	S
Water Heater – Electronic Ignition LP/Electric/Motoraid Water Heater (10 gal.)	S	S	S
Water Purifier – Faucet in Galley	S	S	S
Water Tank – Enclosed and Insulated, Dual Heated Fresh Water Tank	S	S	S
Water Tank Fill and Bleach Port	S	S	S
Winterization System with Potable Antifreeze Tank	S	S	S
SYSTEMS			
Rearview Camera/Monitor – Colour LCD Display Mounted in Dash	S	S	S
Freezer/Refrigerator – On Slide Out Tray 1.38 cu. ft. (AC/DC)	0	0	0
Vacuum – Central Vacuum with Outlet in Baggage Compartment	S	S	S
Washer/Dryer (Vented)	0	0	0
OPTIONAL AWNING PACKAGES			
Awning – Weathershield Equipped A&E 2 Step, Acrylic (length shown)	18	18	18
Awning – Weathershield Equipped A&E Slide Topper (number of awnings shown)	2	2	2
Awning – Weathershield Equipped A&E Elite Window Awnings (Main Slide Windows and Bedroom Window)	2	2	2
Awning – Front Door Awning – A&E Oasis Power with Remote	-	0	0
Awning – Front Door Awning – A&E Oasis Manual	-	0	0
Awning – Weathershield Equipped Weatherpro Power, Acrylic with Remote and Wind Sensor (Length Shown)	18	18	18
Factory P.D.I.			
	0	0	0
* New for 2005 S Standard 0 Optional			

Coach Net

Triple E is a proud partner of Coach Net, an extensive support program providing complete and fully paid roadside assistance, emergency road service, and special warranty support benefits that follow you throughout Canada and the U.S. Service is free for the first year of ownership and available at a nominal fee for subsequent years.

COACH NET'S 24-HOUR CUSTOMER CARE INCLUDES

- Emergency roadside assistance – including tow vehicle
- Toll free technician hotline for operation and service support
- Toll free nationwide service appointment assistance
- Free custom trip routing and colour maps
- Warranty service at over 6,800 locations throughout North America
- Benefits such as free jump starts, tire changes, fuel delivery and lock out service

2 Year Limited Warranty

Triple E is proud to offer a 2 year limited warranty on structure as well as most major components. Please see your dealer for further details.

A reputation for excellence since 1965

For forty years Triple E has produced style, comfort, durability and uncompromising quality in recreation vehicles. We've built our reputation by maintaining full control of the manufacturing process, and almost everything you see in the finished product has been built on site to our renowned high standards, plus those of the Canadian Standards Association or Recreational Vehicle Industry Association. Triple E was also one of the first RV manufacturers to achieve ISO 9001 certification. If you demand the best in your RV, you've found it in Triple E.



Founder P.W. Enns with the first Triple E Class A motorhome.



The first Triple E 13' travel trailer manufactured in 1965.



RECREATIONAL VEHICLES

www.tripleerv.com

Triple E Recreational Vehicles P.O. Box 1230, Winkler, Manitoba, Canada R6W 4C4 Telephone: (204) 325-4361 Fax: (204) 325-5241



Triple E Recreational Vehicles meet or surpass CSA-CRVA-RVIA standards covering electrical services, gas services, plumbing services and vehicular safety. Signature Motorhomes exceed 96" in width. In some states, 96" is the maximum width of vehicles travelling some or all state roads. It is the responsibility of the owner to be familiar with the road usage laws of the states in which you travel. Product improvement is a continuing process at Triple E Recreational Vehicles. Thus, we reserve the right to change specifications on any or all products without prior notice; errors and omissions excepted. Triple E Recreational Vehicles is under no obligation to undertake modification to units manufactured prior to changes on specifications. Brochure pictures may be shown with optional equipment. Colours may not be exactly as shown due to the printing process. Please see your dealer for specific colours.