



EXCELLENCE YOU DESERVE!

Corsair 2006
excella



FIFTH WHEEL & TRAVEL TRAILERS



Model 33RLTS in Autumn Fern Decor

Excelsa Livability

Experience the “At Home” comfort and livability that only Corsair Excelsa quality provides. Residential style features are endless! Panoramic “Stormtite” double glazed windows, “Dayliter” Dual-Pane residential skylights with moisture control. “Karadon” solid surface countertops, high quality furniture and fabrics and brand name components are just a few of the unique features offered by Corsair. New for 2006 is the “Atwood” XT water heater that provides 16 gallons of hot water from a 10 gallon tank. Our un-matched quality construction and wide body design provide year round comfort, exclusive livability and peace of mind.

Additional residential features include central air conditioning, energy saving two stage furnace, optional electric fireplace and an attic ventilation system incorporated in the R11 trussed roof.

For your entertainment pleasure, enjoy the JVC Home Theatre DVD Stereo System and 27" TV with surround sound or keep in touch with family and friends at the multi-functional computer desk.

Excellence You Deserve!



Model 34RLTS in Elegance Decor with Optional Leather Fabric



We are General Coach, a division of Thor Industries Inc., a western Canadian company that manufactures the well known Corsair brand of quality recreational vehicles. For over 55 years we have been consumer established as

builders of high value, superior quality RV's with proven high resale value.

Because we are a limited capacity production company we do not mass produce our products allowing us to ensure strict quality control standards which, in turn, ensures your comfort and satisfaction. Residential quality components and residential style construction techniques are utilized by skilled, conscientious, long term employees dedicated to quality workmanship.

*Corsair by General Coach is designed for recreational use in western Canadian climate and conditions with "Polar Pak" features second to none. Your peace of mind with your purchase decision is reinforced by Corsair's **Six Year Limited Structural Integrity Warranty.***

Why a Thor Product Is Your Best RV Value.

Thor industries, Inc., proudly traces its history back nearly seventy years to the pioneering days of the RV industry with the founding of Airstream, the industry's oldest and most renowned brand. Our total commitment to quality and our philosophy of putting our customers first has led to our continuous growth; today Thor is the largest manufacturer of travel trailers and fifth wheels, a major manufacturer of motorhomes and the largest builder of small and mid-size buses in North America. Thor's strong financial condition and years of solid growth are your assurance that we will be here to serve you for years to come. We think this extra peace of mind is important when you are making a significant investment. Our customers are always #1 with us.

“ We purchased our first General Coach fifth wheel in 1995 and have upgraded with the purchases of two others since. We have looked at many other brands but we always come back to General Coach .We have been on a plant tour and seen the quality workmanship. The value is always there and when you spend 100 nights a year in the unit you appreciate that quality. The comments & compliments that you receive in campgrounds and on the road are great. We have even sold our used units to family members. Because of your continuing positive improvements we are looking at upgrading to the new 31CKDS in the future. Thank you and your Oliver, BC Plant team and keep up the good work.

Dale & Sandi Paschinski
Calgary, AB



Table of Contents

FIFTH WHEELS

Model 26RKS	3
Model 28.5RKS	4
Model 29CKS	5
Model 29.5RLS	6
Model 29RKDS	7
Model 30RLDS	8
Model 31CKDS	9
Model 31.5RLS	10
Model 32.5TKS	11
Model 33RLTS	12
Model 34RLTS	13

TRAVEL TRAILER

Model 30RLS	14
Polar Pak Your Subzero Solution ..	15
Feature Photos	16-18
Construction Detail	19

Corsair Excella, Excellence You Deserve!

Production information, specifications, photography in this brochure were as accurate as possible at time of printing. Photographs may contain some features that are optional on your vehicle. Since we continually strive to improve our products, actual products may differ. Prices and specifications are subject to change without notice. All capacities are approximate and dimensions are nominal. All products meet or exceed CSA or RVIA standards.

Check with your local dealer for a complete list of options and features on the model you are considering.





Pictured is the New Model 31CKDS XL Series Fifth Wheel with spacious wide body livability and a newly designed bathroom and bedroom with a level floor. The new XL Series features a residential 7'7" height in the living area with a 6'2" height in the living room slide out. The functional kitchen features include optional "Karadon" solid surface countertops, deep, scratch resistant acrylic fiberglass sink, "Moen" faucet, full height maple cabinet doors and large full depth drawers. The contemporary design of the floor plan is the answer to all your full time living requirements. The rear lounge is complemented by large solar reflective windows, and attractive entertainment center with optional fireplace and a multi-use computer desk area. A recliner rocker with flip up computer shelf is available in lieu of the computer desk with chair. The hide-a-bed is available with optional retractable footrests for added comfort.

Model
31CKDS XL
in Elegance
Decor



The Model 31CKDS XL has excellent bedroom height at 6'6" with the one level floor in the bathroom and bedroom area. Our wide body design allows for a residential queen bed or optional king bed with extra deep dresser drawers. An optional 17" LCD television is integrated into the bedroom overhead cabinet.

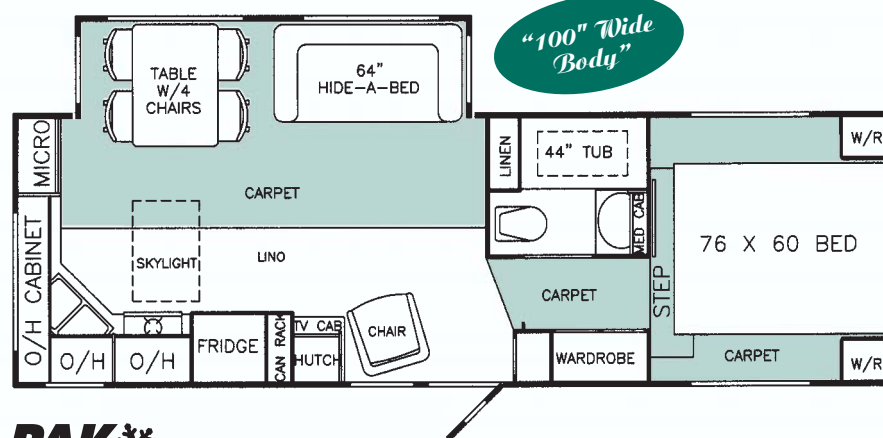
Full height residential fiberglass garden tub (38") is standard with the "Daylighter" residential skylight designed with exclusive interior moisture control.

Our low volume production levels allow extra attention to detail and the pride of quality workmanship is evident in all General Coach products.

Model 31CKDS-XL Elegance Bedroom Decor



FIFTH WHEEL MODEL 26RKS



POLAR-PAK
THE SUB-ZERO SOLUTION

STANDARD FEATURES

BATH/BEDROOM

- ◆ “Moen” Vanity Faucet
- ◆ Power Vent in Bath
- ◆ CO Detector
- ◆ Residential Fiberglass Tub W/Glass Door
- ◆ Escape Window in Bedroom
- ◆ Porcelain Toilet
- ◆ 5'9" Bedroom Height
- ◆ Queen Mattress—76" x 60"
- ◆ Co-ord. Bedspread & Pillows
- ◆ Day/Nite Fabric Blinds
- ◆ Tooth Brush Holder, Soap Dish
- * Residential Skylight with Moisture Control & Blind

KITCHEN

- ◆ Knife Block
- ◆ Jensen Range Hood W/Systems Monitor
- ◆ “Atwood” High Output Range
- ◆ “Norcold” 8 cu.ft. Fridge W/Aluminum Laminate Door Panels
- * Residential Skylight with Moisture Control & Blind
- ◆ Raised Maple Cabinet Doors
- ◆ Acrylic Kitchen Sink W/“Moen” Faucet W/Spray
- ◆ Kitchen Drawers—Birch Plywood—Nylon Rollers & Steel Guides
- ◆ Hardwood Table & 4 High Back Chairs
- ◆ Fluorescent Light in Ceiling
- ◆ Pull Out Can Rack

LIVING ROOM

- ◆ Cable/Telephone Hook Up
- ◆ Smoke Detector
- ◆ Fire Extinguisher
- ◆ AM/FM Stereo/CD Player W/4 Speakers
- ◆ Cocktail Chair - 28" Recliner
- ◆ 120 V. Lights & Receptacles in Slide Out
- ◆ Day/Nite Fabric Blinds
- ◆ Raised Maple Cabinet Doors
- ◆ Fluorescent Light in Ceiling
- ◆ Solid Maple & Fabric Fascia - L.R. Slide

EXCELLA STANDARD FEATURES

- ◆ Central Roof AC—13.5
- ◆ 15' Awning A+E
- ◆ Microwave Oven
- ◆ TV Antenna
- * “Fantastic” Rain Sensor Vent Fan
- ◆ Black Tank Flush
- ◆ Extended Pin Box
- ◆ Fold Away Assist Rail
- ◆ Hide A Bed - 64"
- ◆ Propane Leak Detector
- * Stormtite Windows
- ◆ TV Shelf/BR
- ◆ Aluminum Wheels (4)

EXTERIOR

- ◆ “Medallion Filon” High Gloss Fiberglass
- ◆ Solar Reflective Radius Corner Windows
- ◆ Seamless Fiberglass Frt. & Rear Caps
- ◆ Fiberglass Skirts/Fenders
- * Compartment Doors w/1" Insulation
- ◆ Roof Rack & Ladder
- ◆ Shock Absorbers (4)
- ◆ 2 Rear Stab. Jacks
- ◆ Elec. Front Jacks W/Quick Release Pins
- ◆ “Dicor” Vinyl Roof
- ◆ Seamless Polypropylene Undersiding
- * 2" Vac-U-Lam Sidewalls W/Dbl. Plywood
- ◆ Basement Storage—Full Width
- ◆ Dexter Nev-R-Lube Axles W/12" Brakes
- ◆ 16" Radials w/Spare
- * 3/8" Plywood Roof Deck
- ◆ 8' Sewer Hose Compartment
- ◆ Automotive Undercoat
- ◆ Curbside Scare Light
- ◆ Adjustable Height Spring Hangers

MECHANICAL/CONSTRUCTION

- * Crowned Truss Roof R-11 Insulation
- * 2 Stage Furnace 23-34 BTU
- * Heated & Encl. Holding & Fresh Water Tanks
- ◆ 45 Amp Power Converter W/Batt. Charger
- ◆ Hot Water Bypass Valves
- ◆ Gas/Elec. Water Heater W/DSI—23 L (6 US Gal.)
- ◆ Fresh Water 228 L (60 US Gal.)
- ◆ Toilet Holding Tank 203 L (53.4 US Gal.)
- ◆ Grey Water 194 L (51 US Gal.)
- ◆ Dual Propane Bottles 13.6 Kg ea. (30 lbs. ea.)
- ◆ Electric “Sta-Tite” Slide Out W/Manual Override—“Flush Floor”
- ◆ Auto Change Over Propane Reg.
- ◆ Solar Panel & Satellite Prewire
- ◆ Antifreeze Pick Up System
- * Insulated Slide Out Floor 23/8"

OPTIONS AVAILABLE

- ◆ “Weather Pro” Electric Awning*
- ◆ Awning Upgrade 9000 Series
- * Attic Ventilation System*
- ◆ Central Vacuum*
- ◆ Dinette ILO F/S Table*
- ◆ Electric Rear Stabilizer Jacks*
- ◆ Exterior Shower*
- ◆ Hideabed w/Footrest
- ◆ Maple Fridge Panels
- ◆ Round Dining Table
- ◆ Twin Beds*
- ◆ Solar Panel*
- ◆ Water Filter
- ◆ “Norcold” 10 cu. ft. Fridge
- ◆ 12 Volt Disconnect*
- ◆ Memory Foam Mattress Pad

* Before Production Only.

Specifications are subject to change without notice or obligation.

VEHICLE LOADING: Every effort has been made to provide the greatest number of options for the recreation vehicle owner. Along with these choices comes the responsibility to manage the loads that are imposed by the choices so that they remain within the manufacturer's specified chassis weight limits. Do not overload the recreation vehicle.

DRY WEIGHT is the total weight of the trailer with standard features included and all tanks empty.

NET CARRYING CAPACITY is calculated with standard features only and all tanks empty. Any options, fluids, or dealer added options must be subtracted from the Net Carrying Capacity to determine the remaining cargo allowance.

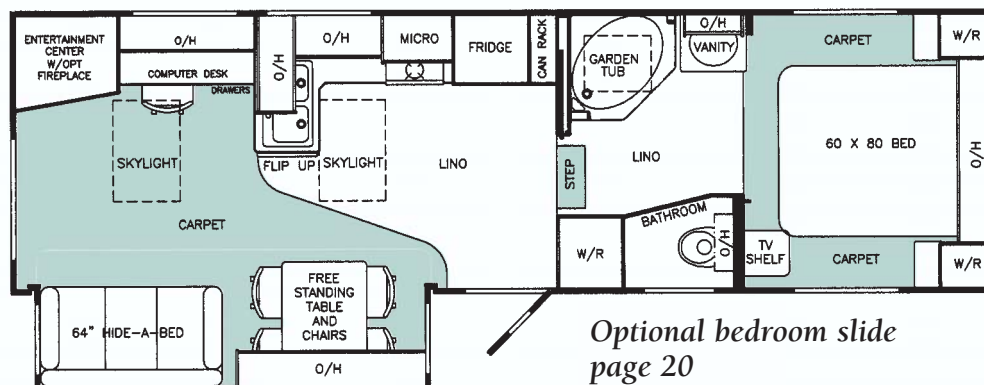
WARNING: This information is intended as a guide only. Weights of individual vehicles may vary. Consult your owner's manual for complete loading, weighing, and towing instructions.



FIFTH WHEEL MODEL 29CKS



"100" Wide
Body"



Optional bedroom slide
page 20

SPECIFICATIONS

GVWR	5672 Kg/12,500 lbs.
Dry Weight	4578 Kg/10,090 lbs.
Net Carrying Capacity	1094 Kg/2,410 lbs.
Axle Capacity	5430 Kg/12,000 lbs.
Hitch Weight	846 Kg/1,865 lbs.
Height*	3.9 M/12'8"
Width	2.5 M/8'4"
Length	9.2 M/30'3"
Exterior Storage	89 cu. ft.

* Approximate height to top
of air conditioner

POLAR-PAK
THE SUB-ZERO SOLUTION

STANDARD FEATURES

BATH/BEDROOM

- ◆ "Moen" Vanity Faucet
- ◆ Power Vent in Toilet Compartment
- ◆ CO Detector
- ◆ Residential Fiberglass Garden Tub W/Glass Door
- ◆ Escape Window
- * "Fantastic" Vent Fan Bathroom
- ◆ 6'0" Bedroom Height
- ◆ Queen Mattress—60" x 80"
- ◆ Co-ord. Bedspread & Pillows
- ◆ Day/Nite Fabric Blinds
- ◆ TV Shelf in Bedroom
- ◆ Porcelain Toilet W/Pedal Flush
- * Residential Skylight with Moisture Control

KITCHEN

- ◆ Knife Block
- ◆ Jensen Range Hood W/Systems Monitor
- ◆ "Atwood" High Output Range
- ◆ "Norcold" 8 cu. ft. Fridge W/Aluminum Laminate Door Panels
- ◆ Hardwood Table & 4 High Back Chairs
- ◆ Acrylic Kitchen Sink W/"Moen" Faucet W/Spray
- ◆ Kitchen Drawers—Birch Plywood—Nylon Rollers & Steel Guides
- ◆ Raised Maple Cabinet Doors W/Brushed Nickel Hardware
- ◆ Fluorescent Light in Ceiling
- ◆ Double Can Storage Rack
- * "Fantastic Rain Sensor" Vent Fan
- * Residential Skylight with Moisture Control & Blind

LIVING ROOM

- ◆ Cable/Telephone Hook Up
- ◆ Fire Extinguisher & Smoke Detector
- ◆ Residential CD & DVD Stereo with Surround Sound
- ◆ Computer Desk w/Chair
- ◆ 120 V. Lights & Receptacle in Slide Out
- ◆ Day/Nite Fabric Blinds
- ◆ Raised Maple Cabinet Doors
- ◆ Co-ord. "C" Valances
- ◆ Fluorescent Light in Ceiling
- ◆ 27" Flatscreen TV
- * Residential Skylight with Moisture Control & Blind

EXCELLA STANDARD FEATURES

- ◆ Central Roof AC—13.5 BTU
- ◆ 15' Awning A+E - 8500
- ◆ Microwave Oven
- ◆ TV Antenna
- ◆ "Medallion Filon" Exterior
- ◆ Black Tank Flush
- ◆ Antifreeze Pickup System
- ◆ Hide A Bed - 64"
- ◆ Propane Leak Detector
- ◆ TV Shelf/BR

EXTERIOR

- * Solar Reflective "Stormtite" Windows with Thermopane Glass
- ◆ Seamless Fiberglass Frt. & Rear Caps
- ◆ Fiberglass Skirts/Fenders
- * Compartment Doors w/1" Insulation
- ◆ Roof Rack & Ladder
- ◆ Shock Absorbers (4)
- ◆ 2 Rear Stab. Jacks
- ◆ Elec. Front Jacks W/Quick Release Pins
- ◆ "Dicor" Vinyl Roof
- ◆ Hitch Hook Up Light

MECHANICAL/CONSTRUCTION

- * Crowned Truss Roof R-11 Ins.
- * 2 Stage Furnace 23-34 BTU
- * Heated & Encl. Holding & Fresh Water Tanks
- ◆ 45 Amp Power Converter W/Batt. Charger
- ◆ Hot Water Bypass Valves
- ◆ XT16 Gas/Elec. Water Heater W/DSI—36 L (10 US Gal.)
- ◆ Fresh Water 232 L (61 US Gal.)
- * Insulated Slide Out Floor 2 3/8"
- ◆ Toilet Holding Tank 203 L (53.4 US Gal.)
- ◆ Grey Water 194 L (51 US Gal.)
- ◆ Dual Propane Bottles 13.6 Kg ea. (30 lbs. ea.)
- ◆ Electric "Sta-Tite" Slide Outs W/Manual Override
- ◆ Auto Change Over Propane Reg.
- * Cable Ext. Terminal Valves
- ◆ Solar Panel & Satellite Pre-wire
- ◆ Aluminum Wheels (4)

OPTIONS AVAILABLE

- ◆ Bedroom Slide Out - page 20
- ◆ Awning Upgrade 9000 Series
- * Attic Ventilation System*
- ◆ "Weather Pro" Electric Awning Central Vacuum*
- ◆ Laminate Kitchen Floor
- ◆ Dinette ILO F/S Table*
- ◆ Exterior Shower*
- ◆ Generator Compartment (25x33)*
- ◆ 12 Volt Disconnect*
- ◆ Round Dining Table
- ◆ Maple Fridge Panels
- ◆ Electric Rear Stabilizer Jacks*
- ◆ Electric Fireplace
- ◆ Coffee Table or End Table
- ◆ Recliner ILO Computer Desk*
- ◆ 2 Recliners ILO Hide-a-Bed
- ◆ Twin Beds* (N/A w/Br. Slide)
- ◆ Solar Panel*
- ◆ Garden Shower ILO Bathtub*
- ◆ Water Filter
- ◆ "Norcold" 10 cu. ft. Fridge
- ◆ Hide-a-Bed w/Footrest
- ◆ Solid Surface Kitchen & Vanity Counters*
- ◆ Memory Foam Mattress Pad

* Before Production Only.

Specifications are subject to change without notice or obligation.



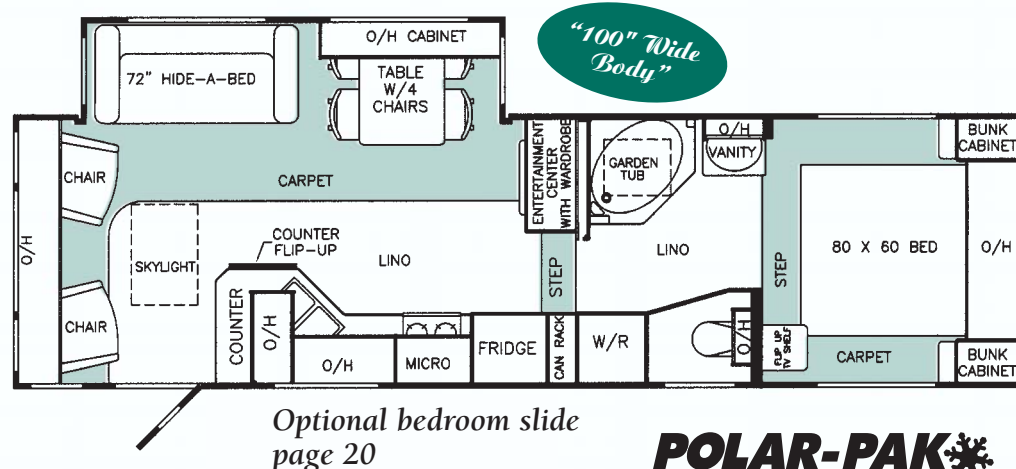


FIFTH WHEEL MODEL 29.5RLS

SPECIFICATIONS

GVWR	5672 Kg/12,500 lbs.
Dry Weight	4812 Kg/10,605 lbs.
Net Carrying Capacity	932 Kg/2,055 lbs.
Axle Capacity	5430 Kg/12,000 lbs.
Hitch Weight	987 Kg/2,175 lbs.
Height*	3.8 M/12'4"
Width	2.5 M/8'4"
Length	9.4 M/30'11"
Exterior Storage	86 cu. ft.

* Approximate height to top of air conditioner



Optional bedroom slide
page 20

POLAR-PAK
THE SUB-ZERO SOLUTION

STANDARD FEATURES

BATH/BEDROOM

- ◆ “Moen” Vanity Faucet
- ◆ Power Vent in Bath
- ◆ CO Detector
- ◆ Residential Fiberglass Garden Tub W/Glass Door
- * Residential Skylight with Moisture Control
- ◆ Escape Window
- * “Fantastic” Vent Fan
- ◆ 6'0" Bedroom Height
- ◆ Queen Mattress—80" x 60"
- ◆ Co-ord. Bedspread & Pillows
- ◆ Day/Nite Fabric Blinds
- ◆ TV Shelf in Bedroom
- ◆ Porcelain Toilet W/Pedal Flush
- ◆ Tooth Brush Holder, Soap Dish

KITCHEN

- ◆ Knife Block
- ◆ Jensen Range Hood W/Systems Monitor
- ◆ “Atwood” High Output Range
- ◆ “Norcold” 8 cu. ft. Fridge W/Aluminum Laminate Door Panels
- ◆ Hardwood Table & 4 High Back Chairs
- ◆ Acrylic Kitchen Sink W/“Moen” Faucet W/Spray
- ◆ Kitchen Drawers—Birch Plywood—Nylon Rollers & Steel Guides
- ◆ Raised Maple Cabinet Doors W/Brushed Nickel Handles
- ◆ Fluorescent Light in Ceiling
- ◆ Double Can Storage Rack
- * Residential Skylight with Moisture Control & Blind

LIVING ROOM

- ◆ Cable/Telephone Hook Up
- ◆ Fire Extinguisher & Smoke Detector
- ◆ Residential Home Theater CD & DVD Stereo System 120 V.
- ◆ 120 V. Lights & Receptacle in Slide Out
- ◆ 2 Cocktail Chairs—28" Recliner
- ◆ Day/Nite Fabric Blinds
- ◆ Raised Maple Cabinet Doors
- ◆ Fluorescent Light in Ceiling
- ◆ 27" Flatscreen TV
- ◆ Maple & Fabric Fascia - L.R. Slide
- * “Fantastic Rain Sensor” Vent Fan

EXCELLA STANDARD FEATURES

- ◆ Central Roof AC—13.5 BTU
- ◆ 16' Awning A+E
- ◆ Microwave Oven
- ◆ TV Antenna
- ◆ Battery Tray Double
- ◆ Black Tank Flush
- ◆ Extended Pin Box
- ◆ Hide A Bed
- ◆ Propane Leak Detector
- ◆ TV Shelf/BR

EXTERIOR

- ◆ “Medallion Filon” High Gloss Fiberglass
- * Stormite Windows Thermopane Glass
- ◆ Seamless Fiberglass Caps
- ◆ Fiberglass Skirts/Fenders
- * Compartment Doors w/1" Insulation
- ◆ Roof Rack & Ladder
- ◆ Shock Absorbers (4)
- ◆ 2 Rear Stab. Jacks
- ◆ Elec. Front Jacks W/Quick Release Pins
- ◆ “Dicor” Vinyl Roof
- ◆ Hitch Hook Up Light
- ◆ Seamless Polypropylene Undersiding
- * 2" Vac-U-Lam Sidewalls W/DbL. Plywood
- ◆ Basement Storage—Lighted
- ◆ Dexter Nev-R-Lube Axles W/12" Brakes
- ◆ 16" Radials w/Spare
- * 3/8" Plywood Roof Deck
- ◆ 8' Sewer Hose Compartment
- ◆ Automotive Undercoat
- ◆ Curbside Scare Light
- ◆ Adjustable Height Spring Hangers

MECHANICAL/CONSTRUCTION

- * Crowned Truss Roof R-11 Ins.
- * 2 Stage Furnace 25-40 BTU
- * Heated & Encl. Holding & Fresh Water Tanks
- ◆ 45 Amp Power Converter W/Batt. Charger
- ◆ Hot Water Bypass Valves
- ◆ XT16 Gas/Elec. Water Heater W/DSI—36 L (10 US Gal.)
- ◆ Fresh Water 232 L (61 US Gal.)
- ◆ Toilet Holding Tank 203 L (53.4 US Gal.)
- * Cable Ext. - Termination Valves
- ◆ Grey Water 194 L (51 US Gal.)
- ◆ Dual Propane Bottles 13.6 Kg ea. (30 lbs. ea.)
- ◆ Electric “Sta-Tite” Slide Out W/Manual Override—“Flush Floor”
- ◆ Auto Change Over Propane Reg.
- ◆ Slide Out Propane Tray
- ◆ Solar Panel & Satellite Pre-wire
- ◆ Aluminum Wheels (4)
- ◆ Antifreeze Pick Up System
- * Insulated Slide Out Floors 2 3/8"

OPTIONS AVAILABLE

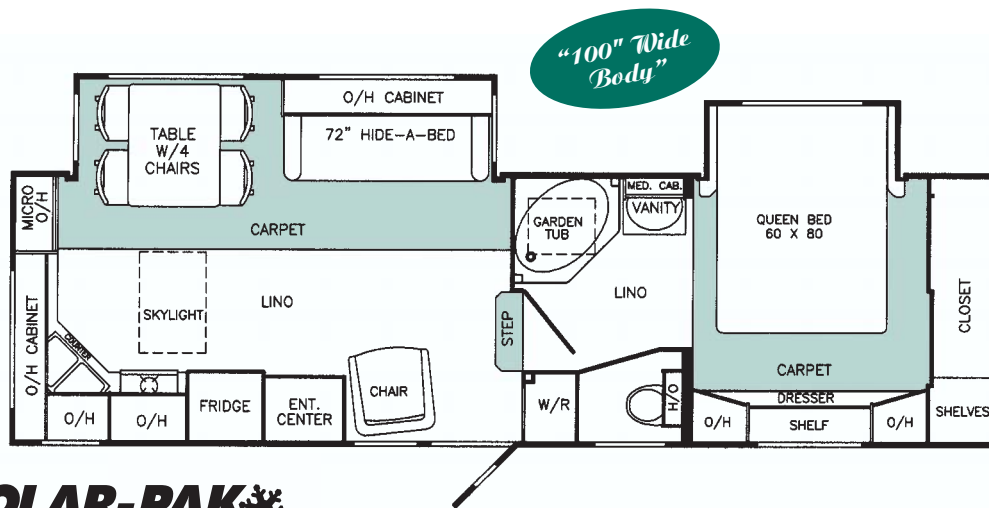
- ❖ “Weather Pro” Electric Awning*
- ❖ Awning Upgrade 9000 Series
- * Attic Ventilation System*
- ❖ Bedroom Slide-Out - page 20
- ❖ Central Vacuum*
- ❖ Dinette ILO F/S Table*
- ❖ Exterior Shower*
- ❖ Round Dining Table
- ❖ Laminate Kitchen Floor*
- ❖ Maple Fridge Panels
- ❖ Maple End Table
- ❖ Electric Rear Stabilizer Jacks*
- ❖ Electric Fireplace (in lieu of Wardrobe)
- ❖ Twin Beds*
- ❖ Solar Panel*
- ❖ Garden Shower ILO Bathtub*
- ❖ Water Filter
- ❖ “Norcold” 10 cu. ft. Fridge
- ❖ Generator Compartment* (25x33)
- ❖ 12 Volt Disconnect*
- ❖ Solid Surface Kitchen & Vanity Counters*
- ❖ Memory Foam Mattress Pad

* Before Production Only.

Specifications are subject to change without notice or obligation.



FIFTH WHEEL MODEL 29RKDS



POLAR-PAK
THE SUB-ZERO SOLUTION

SPECIFICATIONS

GVWR	5898 Kg/13,000 lbs.
Dry Weight	4812 Kg/10,605 lbs.
Net Carrying Capacity	1087 Kg/2,395 lbs.
Axle Capacity	5430 Kg/12,000 lbs.
Hitch Weight	1069 Kg/2,355 lbs.
Height*	3.8 M/12'6"
Width	2.5 M/8'4"
Length	9.2 M/30'2"
Exterior Storage	97 cu. ft.

* Approximate height to top of air conditioner

STANDARD FEATURES

BATH/BEDROOM

- ◆ "Moen" Vanity Faucet
- ◆ Power Vent in Bath
- ◆ CO Detector
- ◆ Residential Fiberglass Tub W/Glass Door
- ◆ Porcelain Toilet W/Pedal Flush
- ◆ Escape Window
- ◆ 6'0" Bedroom Height
- * "Fantastic" Vent Fan
- ◆ Queen Mattress—80" x 60"
- ◆ Co-ord. Bedspread & Pillows
- ◆ Color Co-ord. Valances
- ◆ Day/Nite Fabric Blinds
- ◆ TV Pre-Wire in Bedroom
- ◆ "Sta-Tite" Slide W/Manual Override
- ◆ Tooth Brush Holder, Soap Dish
- * Residential Skylight with Moisture Control over Tub

KITCHEN

- ◆ Knife Block
- ◆ Jensen Range Hood W/Systems Monitor
- ◆ "Atwood" High Output Range
- ◆ Norcold 8 cu. ft. Fridge W/Aluminum Laminate Door Panels
- ◆ Acrylic Kitchen Sink W/"Moen" Faucet W/Spray
- * "Fantastic Rain Sensor" Vent
- Fan
- ◆ Kitchen Drawers—Birch Plywood—Nylon Rollers & Steel Guides
- ◆ Hardwood Table & 4 High Back Chairs
- ◆ Fluorescent Light in Ceiling
- ◆ Double Can Storage Rack
- ◆ Raised Maple Cabinet Doors W/Brushed Nickel Handles

LIVING ROOM

- ◆ Cable/Telephone Hook Up
- ◆ Smoke Detector
- ◆ Fire Extinguisher
- ◆ Cocktail Chair 28" (Recliner)
- ◆ 120 V. Lights & Receptacle in Slide Out
- ◆ Maple & Fascia Fascia - L.R. Slide
- ◆ Co-ord. "C" Valances
- ◆ Day/Nite Fabric Blinds
- ◆ Fluorescent Light in Ceiling
- ◆ Residential Home Theater Stereo System w/CD & DVD Player - 120 V
- ◆ 20" Flatscreen TV

EXCELLA STANDARD FEATURES

- * Central Roof AC—15 BTU W/Heat Pump
- ◆ 18' Awning A+E
- ◆ Microwave Oven
- ◆ TV Antenna
- ◆ Battery Tray Quad
- ◆ Black Tank Flush
- ◆ Fold Away Assist Rail
- ◆ Hide A Bed - 72"
- ◆ Propane Leak Detector
- * Residential Skylight/Kitchen with Moisture Control & Blind

EXTERIOR

- ◆ "Medallion Filon" High Gloss Fiberglass
- * Stormite Windows—Thermopane Glass
- ◆ Seamless Fiberglass Frt. & Rear Caps
- ◆ Fiberglass Skirts/Fenders
- * Compartment Doors w/1" Insulation
- ◆ Roof Rack & Ladder
- ◆ Shock Absorbers (4)
- ◆ 2 Rear Stab. Jacks
- ◆ Elec. Front Jacks W/Quick Release Pins
- ◆ "Dicor" Vinyl Roof
- ◆ Curbside Scare Light
- ◆ Seamless Polypropylene Undersiding
- * 2" Vac-U-Lam Sidewalls W/DbL. Plywood
- ◆ Full Width Storage—Lined & Lighted
- ◆ Dexter Nev-R-Lube Axles W/12" Brakes
- ◆ 16" Radials w/Spare
- ◆ 3/8" Plywood Roof Deck
- ◆ 8' Sewer Hose Compartment
- ◆ Automotive Undercoat
- ◆ Adjustable Height Spring Hangers

MECHANICAL/CONSTRUCTION

- * Crowned Truss Roof R-11 Insulation
- * 2 Stage Furnace 23-34 BTU
- * Heated & Encl. Holding & Fresh Water Tanks
- ◆ 45 Amp Power Converter W/Batt. Charger
- ◆ Hot Water Bypass Valves
- ◆ XT16 Gas/Elec. Water Heater W/DSI—36 L (10 US Gal.)
- ◆ Fresh Water 241 L (64 US Gal.)
- * Cable Ext. - Termination Valves
- ◆ Toilet Holding Tank 203 L (53.4 US Gal.)
- ◆ Grey Water 194 L (51 US Gal.)
- ◆ Dual Propane Bottles 13.6 Kg ea. (30 lbs. ea.)
- ◆ Electric "Sta-Tite" Slide Outs W/Manual Override—"Flush Floor"
- ◆ Auto Change Over Propane Reg.
- ◆ Solar Panel & Satellite Pre-wire
- ◆ Aluminum Wheels (4)
- ◆ Antifreeze Pick Up System
- * Insulated Slide Out Floors 2 3/8"

OPTIONS AVAILABLE

- ◆ "Weather Pro" Electric Awning*
- ◆ Awning Upgrade 9000 Series
- * Attic Ventilation System*
- ◆ Computer Shelf—Lift Up
- ◆ Laminate Kitchen Floor
- ◆ Dinette ILO F/S Table*
- ◆ Maple Coffee Table
- ◆ Exterior Shower*
- ◆ Maple Fridge Panels
- ◆ Solid Surface Kitchen & Vanity Counter*
- ◆ Central Vacuum*
- ◆ Bedroom Pocket Door
- ◆ Round Dining Table
- ◆ Solar Panel*
- ◆ Garden Shower ILO Bathtub*
- ◆ Water Filter
- ◆ "Norcold" 10 cu. ft. Fridge
- ◆ Generator Compartment* (25x33)
- ◆ 12 Volt Disconnect*
- ◆ Memory Foam Mattress Pad
- ◆ Electric Rear Stabilizer Jacks*

* Before Production Only.

Specifications are subject to change without notice or obligation.



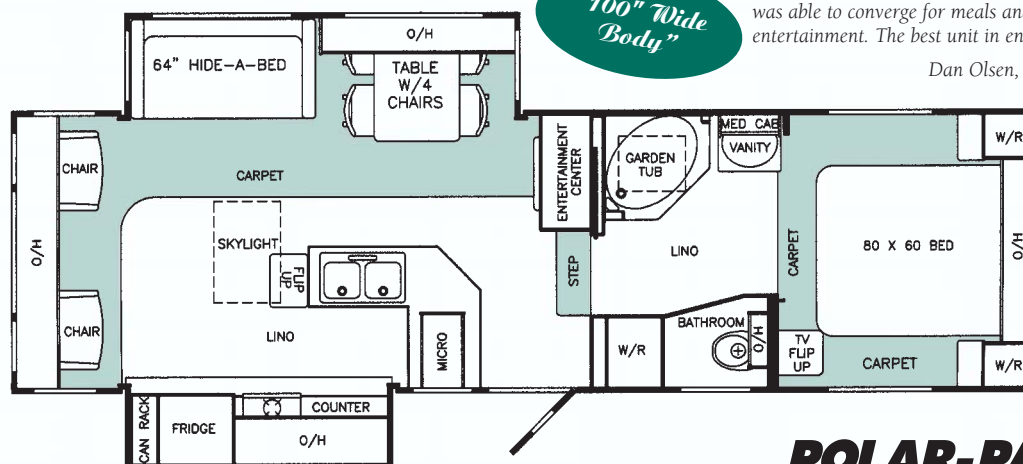


FIFTH WHEEL MODEL 30RLDS

SPECIFICATIONS

GVWR	5944 Kg/13,100 lbs.
Dry Weight	4948 Kg/10,905 lbs.
Net Carrying Capacity	996 Kg/2,195 lbs.
Axle Capacity	5445 Kg/12,000 lbs.
Hitch Weight	894 Kg/1,970 lbs.
Height*	3.8 M/12'4"
Width	2.5 M/8'4"
Length	9.6 M/31'5"
Exterior Storage	86 cu. ft.

* Approximate height to top of air conditioner



"100" Wide Body"

"This is an unbelievable unit! Due to relentless rain on our annual trek, the entire group of 10 was able to converge for meals and entertainment. The best unit in entire campsite."

Dan Olsen, Edmonton, AB

POLAR-PAK
THE SUB-ZERO SOLUTION

STANDARD FEATURES

BATH/BEDROOM

- ◆ "Moen" Vanity Faucet
- ◆ Power Vent in Bath
- ◆ CO Detector
- ◆ Residential Fiberglass Shower W/Glass Door
- ◆ Porcelain Toilet W/Pedal Flush
- ◆ Escape Window
- * ◆ "Fantastic" Vent Fan
- ◆ 6'0" Bedroom Height
- ◆ Queen Mattress—60" x 80"
- ◆ Co-ord. Bedspread & Pillows
- ◆ Day/Nite Fabric Blinds
- * ◆ Residential Skylight with Moisture Control over Tub
- ◆ TV Pre-Wire in Bedroom W/TV Shelf
- ◆ Tooth Brush Holder, Soap Dish

KITCHEN

- ◆ Knife Block
- ◆ Jensen Range Hood W/Systems Monitor
- ◆ "Atwood" High Output Range
- ◆ "Norcold" 8 cu. ft. Fridge W/Aluminum Laminate Door Panels
- ◆ Hardwood Table & 4 High Back Chairs
- ◆ Acrylic Kitchen Sink W/"Moen" Faucet W/Spray
- ◆ Kitchen Drawers—Birch Plywood—Nylon Rollers & Steel Guides
- ◆ Raised Maple Cabinet Doors W/Brushed Nickel Handles
- ◆ Fluorescent Light in Ceiling
- ◆ Maple & Fabric Fascia - Kitchen Slide
- * ◆ Residential Skylight with Moisture Control & Blind

LIVING ROOM

- ◆ Cable/Telephone Hook Up
- ◆ Smoke Detector
- ◆ Fire Extinguisher
- ◆ 120 V. Lights & Receptacle in Slide Out
- ◆ 2 Cocktail Chairs 28" (Recliners)
- ◆ Day/Nite Fabric Blinds
- ◆ Electric "Sta-Tite" Slide W/Manual Override—"Flush Floor"
- ◆ Fluorescent Light in Ceiling
- ◆ 27" Flatscreen TV
- ◆ Maple & Fabric Fascia - L.R. Slide
- * ◆ "Fantastic Rain Sensor" Vent Fan

EXCELLA STANDARD FEATURES

- ◆ Central Roof AC—13.5 BTU
- ◆ Aluminum Wheels (4)
- ◆ 16' Awning
- ◆ Microwave Oven
- ◆ TV Antenna
- ◆ Battery Tray Quad
- ◆ Black Tank Flush
- ◆ Fold Away Assist Rail
- ◆ Hide A Bed - 64"
- ◆ Propane Leak Detector
- ◆ Residential Home Theater Stereo System w/CD & DVD Player - 120V

EXTERIOR

- ◆ Medallion Filon High Gloss Fiberglass
- * ◆ Stormtite Windows—Thermopane Glass
- ◆ Seamless Fiberglass Frt. & Rear Caps
- ◆ Fiberglass Skirts/Fenders
- * ◆ Compartment Doors w/1" Insulation
- ◆ Roof Rack & Ladder
- ◆ Shock Absorbers (4)
- ◆ 2 Rear Stab. Jacks
- ◆ "Dicor" Vinyl Roof
- ◆ Elec. Front Jacks W/Quick Release Pins
- ◆ Hitch Hook Up Light
- ◆ Seamless Polypropylene Undersiding
- * ◆ 2" Vac-U-Lam Sidewalls W/DbL. Plywood
- * ◆ 3/8" Plywood Roof Deck
- ◆ Locking Water Fill & Power Cord Compartment
- ◆ Dexter Nev-R-Lube Axles W/12" Brakes
- ◆ 16" Radials w/Spare
- ◆ 8' Sewer Hose Compartment
- ◆ Automotive Undercoat
- ◆ Curbside Scare Light
- ◆ Adjustable Height Spring Hangers

MECHANICAL/CONSTRUCTION

- * ◆ Crowned Truss Roof R-11 Insulation
- * ◆ 2 Stage Furnace 23-34 BTU
- * ◆ Heated & Encl. Holding & Fresh Water Tanks
- ◆ 45 Amp Power Converter W/Batt. Charger
- ◆ Hot Water Bypass Valves
- ◆ XT16 Gas/Elec. Water Heater W/DSI—36 L (10 US Gal.)
- * ◆ Cable Ext. - Termination Valves
- ◆ Toilet Holding Tank 203 L (53.4 US Gal.)
- ◆ Fresh Water 232 L (61 US Gal.)
- ◆ Grey Water 194 L (51 US Gal.)
- ◆ Dual Propane Bottles 13.6 Kg ea. (30 lbs. ea.)
- ◆ Auto Change Propane Regulator
- ◆ Slide Out Propane Tray
- ◆ Solar Panel & Satellite Pre-wire
- ◆ Antifreeze Pick Up System
- * ◆ Insulated Slide Out Floors 2 3/8"

OPTIONS AVAILABLE

- * ◆ Attic Ventilation System*
- ◆ Awning Upgrade 9000 Series
- ◆ Garden Shower ILO Bathtub
- ◆ Maple Coffee Table
- ◆ Laminate Kitchen Floor
- ◆ Dinette ILO F/S Table*
- ◆ Exterior Shower*
- ◆ Bedroom Slide Out - page 20
- ◆ Solid Surface Kitchen & Vanity Counter*
- ◆ Maple Fridge Panels
- ◆ Central Vacuum*
- ◆ Maple End Table
- ◆ Fabric Recliners 30"
- ◆ "Fabric Leather" Recliners 30"
- ◆ Round Dining Table
- ◆ Solar Panel*
- ◆ Water Filter
- ◆ "Norcold" 10 cu. ft. Fridge
- ◆ Generator Compartment* (25x33)
- ◆ 12 Volt Disconnect*
- ◆ Memory Foam Mattress Pad
- ◆ Electric Fireplace in Ent. Center*
- ◆ Electric Rear Stabilizer Jacks

* Before Production Only.

Specifications are subject to change without notice or obligation.



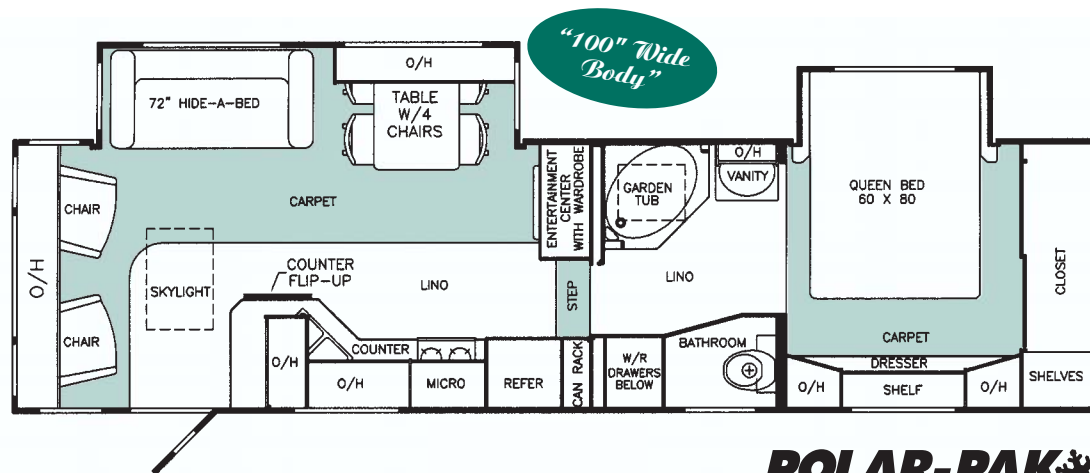


FIFTH WHEEL MODEL 31.5RLS

SPECIFICATIONS

GVWR
6125 Kg/13,500 lbs.
Dry Weight
5104 Kg/11,250 lbs.
Net Carrying Capacity
1021 Kg/2,250 lbs.
Axle Capacity
5430 Kg/12,000 lbs.
Hitch Weight
1080 Kg/2,380 lbs.
Height*
3.8 M/12'4"
Width
2.5 M/8'4"
Length
10.0 M/32'11"
Exterior Storage
107 cu. ft.

* Approximate height to top of air conditioner



POLAR-PAK
THE SUB-ZERO SOLUTION

STANDARD FEATURES

BATH/BEDROOM

- ◆ "Moen" Vanity Faucet
- ◆ Power Vent in Bath
- ◆ CO Detector
- ◆ Residential Fiberglass Shower W/Glass Door
- ◆ Porcelain Toilet W/Pedal Flush
- ◆ Escape Window
- * "Fantastic" Vent Fan
- ◆ 6'0" Bedroom Height
- ◆ Queen Mattress—60" x 80"
- ◆ Co-ord. Bedspread & Pillows
- ◆ Day/Nite Fabric Blinds
- ◆ "Sta-Tite" BR Slide W/Manual Override
- ◆ TV Pre-Wire in Bedroom
- ◆ Tooth Brush Holder, Soap Dish
- ◆ Clothes Hamper in Bedroom

KITCHEN

- ◆ Knife Block
- ◆ Jensen Range Hood W/Systems Monitor
- ◆ "Atwood" High Output Range
- ◆ Norcold 8 cu. ft. Fridge W/Aluminum Laminate Door Panels
- ◆ Fluorescent Light in Ceiling
- ◆ Hardwood Table & 4 High Back Chairs
- ◆ Acrylic Kitchen Sink W/"Moen" Faucet W/Spray
- ◆ Kitchen Drawers—Birch Plywood—Nylon Rollers & Steel Guides
- ◆ Raised Maple Cabinet Doors W/Brushed Nickel Handles

LIVING ROOM

- ◆ Cable/Telephone Hook Up
- ◆ Fire Extinguisher & Smoke Detector
- ◆ 120 V. Lights & Receptacle in Slide Out
- ◆ 2 Cocktail Chairs 28" (Recliners)
- ◆ Co-ord. "C" Valances
- ◆ Day/Nite Fabric Blinds
- ◆ Electric "Sta-Tite" Slide W/Manual Override—"Flush Floor"
- ◆ Fluorescent Light in Ceiling
- ◆ 27" Flatscreen TV
- ◆ Maple & Fabric Fascia - L.R. Slide
- * "Fantastic Rain Sensor" Vent Fan

EXCELLA STANDARD FEATURES

- * Central Roof AC—15 BTU W/Heat Pump
- ◆ 18' Awning
- ◆ Microwave Oven
- ◆ TV Antenna
- ◆ Battery Tray Quad
- ◆ Black Tank Flush
- ◆ Fold Away Assist Rail
- ◆ Hide A Bed
- ◆ Propane Leak Detector
- * Residential Skylight/Living Room with Moisture Control & Blind
- * Residential Skylight/Tub with Moisture Control
- ◆ Residential Home Theater Stereo System w/CD & DVD Player - 120V

EXTERIOR

- ◆ Medallion Filon High Gloss Fiberglass
- * Stormtite Windows—Thermopane Glass
- ◆ Seamless Fiberglass Frt. & Rear Caps
- ◆ Fiberglass Skirts/Fenders
- * Compartment Doors w/1" Insulation
- ◆ Roof Rack & Ladder
- ◆ Shock Absorbers (4)
- ◆ 2 Rear Stab. Jacks
- ◆ "Dicor Vinyl" Roof
- ◆ Elec. Front Jacks W/Quick Release Pins
- ◆ Hitch Hook Up Light
- ◆ Seamless Polypropylene Undersiding
- * 2" Vac-U-Lam Sidewalls W/Dbl. Plywood
- * 3/8" Plywood Roof Deck
- ◆ Locking Water Fill & Power Cord Compartment
- ◆ Dexter Nev-R-Lube Axles W/12" Brakes
- ◆ 16" Radials w/Spare
- ◆ 8' Sewer Hose Compartment
- ◆ Automotive Undercoat
- ◆ Curbside Scare Light
- ◆ Adjustable Height Spring Hangers

MECHANICAL/CONSTRUCTION

- * Crowned Truss Roof R-11 Insulation
- * 2 Stage Furnace 25-40 BTU
- * Heated & Encl. Holding & Fresh Water Tanks
- ◆ 45 Amp Power Converter W/Batt. Charger
- ◆ Hot Water Bypass Valves
- ◆ XT16 Gas/Elec. Water Heater W/DSI—36 L (10 US Gal.)
- ◆ Aluminum Wheels (4)
- * Cable Ext. - Termination Valves
- ◆ Toilet Holding Tank 203 L (53.4 US Gal.)
- ◆ Fresh Water 232 L (60 US Gal.)
- ◆ Grey Water 194 L (51 US Gal.)
- ◆ Dual Propane Bottles 13.6 Kg ea. (30 lbs. ea.)
- ◆ Auto Change Propane Regulator
- ◆ Pre-Plumbed for Washer/Dryer
- ◆ Slide Out Propane Tray
- ◆ Solar Panel & Satellite Pre-wire
- ◆ Antifreeze Pick Up System
- * Insulated Slide Out Floors 2 3/8"

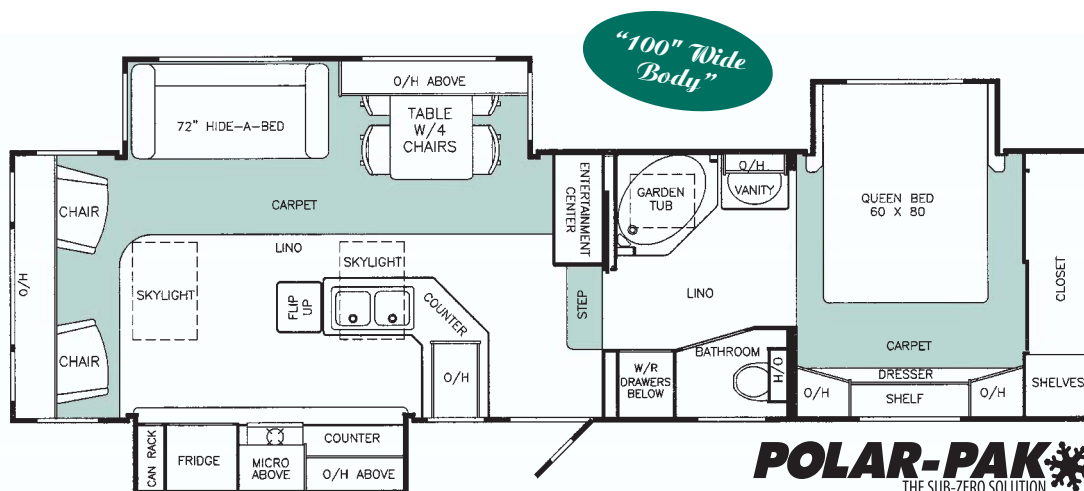
OPTIONS AVAILABLE

- ◆ "Weather Pro" Electric Awning*
- ◆ Awning Upgrade 9000 Series
- * Attic Ventilation System*
- ◆ Awning on Bedroom Slide
- ◆ Laminate Kitchen Floor*
- ◆ Maple Coffee Table
- ◆ Dinette ILO F/S Table*
- ◆ Exterior Shower*
- ◆ Washer/Dryer Cabinet & 50 Amp Service*
- ◆ Washer/Dryer—1 pc. Splendid*
- ◆ Solid Surface Kitchen & Vanity Counter*
- ◆ Maple End Table
- ◆ "Norcold" 10 cu. ft. Fridge
- ◆ Round Dining Table
- ◆ Solar Panel*
- ◆ Water Filter
- ◆ Bedroom Pocket Door*
- ◆ Generator Compartment* (25x33)
- ◆ 12 Volt Disconnect*
- ◆ Memory Foam Mattress Pad
- ◆ Maple Fridge Panels
- ◆ Electric Rear Stabilizer Jacks*
- ◆ Electric Fireplace in Ent. Center*

* Before Production Only.

Specifications are subject to change without notice or obligation.

FIFTH WHEEL MODEL 32.5TKS



POLAR-PAK
THE SUB-ZERO SOLUTION

SPECIFICATIONS

GVWR	6715 Kg/14,800 lbs.
Dry Weight	5633 Kg/12,415 lbs.
Net Carrying Capacity	1082 Kg/2,385 lbs.
Axle Capacity	6352 Kg/14,000 lbs.
Hitch Weight	1180 Kg/2,600 lbs.
Height*	3.9 M/12'6"
Width	2.5 M/8'4"
Length	10.4 M/34'
Exterior Storage	106 cu. ft.

* Approximate height to top of air conditioner

STANDARD FEATURES

BATH/BEDROOM

- ◆ Fiberglass Garden Tub Enclosure W/Residential Faucet
- ◆ Porcelain Toilet W/Pedal Flush
- ◆ 6'0" Bedroom Height
- ◆ Queen Mattress—80" x 60"
- ◆ Bedspread & Pillows
- ◆ Day/Nite Fabric Blinds
- * ◆ "Fantastic" Vent Fan
- ◆ "Karadon" Solid Surface Vanity
- ◆ "Sta-Tite" Slide W/Manual Override
- ◆ TV Pre-Wire in Bedroom
- * ◆ Residential Skylight/Shower with Moisture Control
- ◆ Vanity W/Acrylic Sink & "Moen" Residential Faucet
- ◆ Fluorescent Light in Bath
- ◆ Tooth Brush Holder, Soap Dish
- ◆ CO Detector
- ◆ Clothes Hamper in Bedroom

KITCHEN

- ◆ Large Countertops W/Acrylic Sink & Residential "Moen" Faucet W/Spray
- ◆ Knife Block
- ◆ "Atwood" High Output Range Top
- ◆ "Norcold" 8 cu. ft. Fridge W/Aluminum Laminate Door Panels
- ◆ Kitchen Drawers—Birch Plywood—Nylon Rollers & Steel Guides
- ◆ "Karadon" Solid Surface Countertop
- ◆ Raised Maple Doors
- ◆ Hardwood Table & 4 High Back Chairs
- ◆ Fluorescent Lights in Ceiling
- * ◆ "Fantastic Rain Sensor" Vent Fan
- * ◆ Residential Skylight with Moisture Control & Blind
- ◆ Propane Leak Detector
- ◆ Clock
- ◆ Convection Microwave W/120V Range Hood
- ◆ Decorative Mirror
- ◆ Double Can Storage Rack
- ◆ Maple & Fabric Fascia - Kitchen Slide

LIVING ROOM

- ◆ 27" Flatscreen TV
- ◆ Residential Home Theater Stereo W/CD & DVD Player
- ◆ Surround Sound
- ◆ Cable/Telephone Hook Up
- ◆ Video Control Center
- ◆ Fire Extinguisher & Smoke Detector
- ◆ 120 V. Lights & Receptacle in Slide Out
- ◆ Day/Nite Fabric Blinds
- ◆ Electric "Sta-Tite" Rack & Pinion Super Slides—"Flush Floor"
- ◆ Fluorescent Lights in Ceiling
- ◆ Hide A Bed - 72"
- ◆ TV Antenna
- ◆ 2 - 28" Recliner/Chairs
- ◆ Reading Lights
- * ◆ Residential Skylight with Moisture Control & Blind
- ◆ Maple & Fabric Fascia - L.R. Slide

EXTERIOR

- ◆ Medallion Filon High Gloss Fiberglass
- ◆ Entrance Door - 30"
- * ◆ Stormtite Windows—Thermopane Glass
- ◆ Seamless Fiberglass Frt. & Rear Caps
- ◆ Roof Rack & Ladder
- ◆ Shock Absorbers (4)
- ◆ "Dicor" Vinyl Seamless Roof
- ◆ 2 Rear Stab. Jacks
- ◆ Elec. Front Jacks W/Quick Release Pins
- ◆ Aluminum Wheels (4)
- ◆ Hitch Hook Up Light
- ◆ Seamless Polypropylene Undersiding
- ◆ Battery Tray Quad
- ◆ 8' Sewer Hose Compartment
- ◆ Automotive Undercoat
- * ◆ Central Roof AC W/Heat Pump
- ◆ 18' Awning A&E
- ◆ Fold Away Assist Rail
- ◆ Underslung Tire
- ◆ Curbside Scare Light
- * ◆ Compartment Doors w/1" Ins.

MECHANICAL/CONSTRUCTION

- * ◆ 2" Vac-U-Lam Sidewalls
- * ◆ 3/8" Plywood Roof Deck
- * ◆ Tapered Truss Roof
- * ◆ R-11 Insulation - Roof
- ◆ 16" Radials
- ◆ Dexter Nev-R-Lube Axles W/Elec. Brakes (12")
- * ◆ "Dual" 2 Stage Furnaces 23-34 BTU
- * ◆ Heated & Insulated Holding Tank Compartments
- ◆ 45 Amp Power Converter W/Batt. Charger
- * ◆ Cable Ext. - Termination Valves
- * ◆ Insulated Slide Out Floors 2 3/8"
- ◆ XT16 Gas/Elec. DSI Water Heater 36 L (10 US Gal.) W/Bypass Valves
- ◆ Toilet Holding Tank 203 L (53.4 US Gal.)
- ◆ Fresh Water 232 L (61 US Gal.)
- ◆ Grey Water 194 L (51 US Gal.)
- ◆ Dual Propane Bottles 13.6 Kg ea. (30 lbs. ea.) W/Auto CO Reg.
- ◆ Slide Out Propane Tray
- ◆ Black Tank Flush
- ◆ Pre-Wire for Solar Panel
- ◆ Solar Panel & Satellite Pre-wire
- ◆ Antifreeze Pick Up System
- ◆ Adjustable Height Spring Hangers

OPTIONS AVAILABLE

- ◆ Awning Upgrade 9000 Series
- ◆ Awning on Bedroom Slide
- * ◆ Attic Ventilation System*
- ◆ Coffee Table
- ◆ Laminate Kitchen Floor*
- ◆ Dinette ILO F/S Table*
- ◆ Exterior Shower*
- ◆ "Fabric Leather" Recliners - 30"*
- ◆ "Fabric Leather" Hide-a-bed
- ◆ Range w/Deep Oven*
- ◆ Fabric Recliners - 30"
- ◆ Bedroom Pocket Door*
- ◆ Maple Fridge Panels
- ◆ Maple End Table
- ◆ Electric Rear Stabilizer Jacks
- ◆ Garden Shower ILO Garden Tub*
- ◆ Round Dining Table
- ◆ Central Vacuum*
- ◆ Solar Panel*
- ◆ Washer/Dryer Cabinet & 50 Amp Service*
- ◆ Washer/Dryer—1 pc. Splendid*
- ◆ Water Filter
- ◆ Generator Compartment* (25x33)
- ◆ Memory Foam Mattress Pad
- ◆ 12 Volt Disconnect*

* Before Production Only.

Specifications are subject to change without notice or obligation.



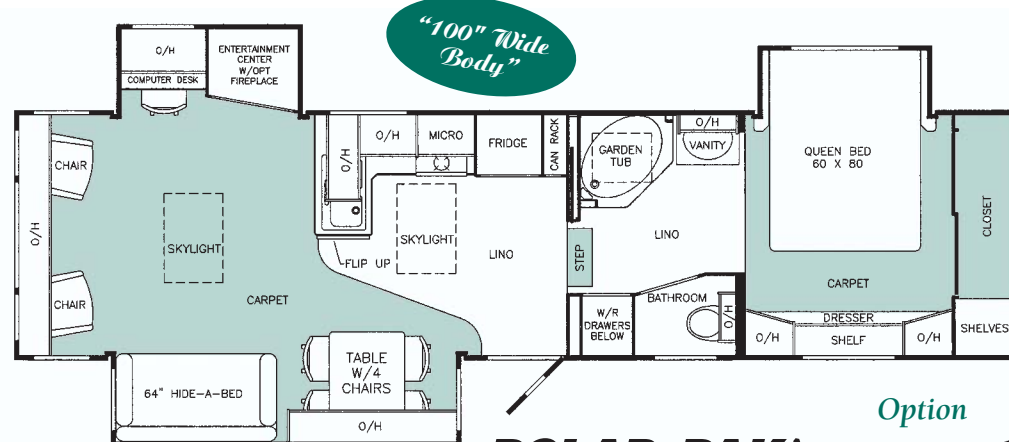


FIFTH WHEEL MODEL 33RLTS

SPECIFICATIONS

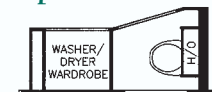
GVWR	6715 Kg/14,800 lbs.
Dry Weight	5633 Kg/12,415 lbs.
Net Carrying Capacity	1082 Kg/2,385 lbs.
Axle Capacity	6352 Kg/14,000 lbs.
Hitch Weight	1069 Kg/2,355 lbs.
Height*	3.8 M/12'4"
Width	2.5 M/8'4"
Length	10.5 M/34'4"
Exterior Storage	113 cu. ft.

* Approximate height to top of air conditioner



POLAR-PAK
THE SUB-ZERO SOLUTION

Option



STANDARD FEATURES

BATH/BEDROOM

- ◆ Fiberglass Garden Tub Enclosure W/Residential Faucet
- ◆ Porcelain Toilet W/Pedal Flush
- ◆ 6'0" Bedroom Height
- ◆ Queen Mattress—80" x 60"
- ◆ Bedspread & Pillows
- ◆ Day/Nite Fabric Blinds
- ◆ * "Fantastic" Vent Fan
- ◆ * "Karadon" Solid Surface Vanity
- ◆ "Sta-Tite" Slide W/Manual Override
- ◆ TV Pre-Wire in Bedroom
- ◆ * Residential Skylight/Shower w/Moisture Control
- ◆ Vanity W/Acrylic Sink & Residential "Moen" Faucet
- ◆ Fluorescent Light in Bath
- ◆ Tooth Brush Holder, Soap Dish
- ◆ CO Detector
- ◆ Clothes Hamper in Bedroom

KITCHEN

- ◆ Large Countertops W/Acrylic Sink & Residential "Moen" Faucet W/Spray
- ◆ Knife Block
- ◆ "Atwood" High Output Range Top
- ◆ "Norcold" 8 cu. ft. Fridge W/Aluminum Laminate Door Panels
- ◆ Kitchen Drawers—Birch Plywood—Nylon Rollers & Steel Guides
- ◆ Double Can Storage Rack
- ◆ "Karadon" Solid Surface Countertop
- ◆ Raised Maple Doors
- ◆ Hardwood Table & 4 High Back Chairs
- ◆ Fluorescent Lights in Ceiling
- ◆ * Residential Skylight w/Moisture Control & Blind
- ◆ Propane Leak Detector
- ◆ Clock
- ◆ Convection Microwave W/120V Range Hood
- ◆ Decorative Mirror

LIVING ROOM

- ◆ 27" Flatscreen TV
- ◆ Residential Home Theater Stereo W/DVD Player & Surround Sound
- ◆ Cable/Telephone Hook Up
- ◆ Video Control Center
- ◆ Fire Extinguisher & Smoke Detector
- ◆ 120 V. Lights & Receptacle in Slide Out
- ◆ Day/Nite Fabric Blinds
- ◆ Chair at Computer Desk
- ◆ Electric "Sta-Tite" Rack & Pinion Super Slides—"Flush Floor"
- ◆ * Insulated Slide Floors 2 3/8"
- ◆ Fluorescent Lights in Ceiling
- ◆ Hide A Bed - 64"
- ◆ TV Antenna
- ◆ 2 - 28" Recliner/Chairs
- ◆ Reading Lights
- ◆ * Residential Skylight w/Moisture Control & Blind
- ◆ Solid Maple Fascia - Entertainment Centre Slide
- ◆ * "Fantastic" Rain Sensor Vent Fan

EXTERIOR

- ◆ Medallion Filon High Gloss Fiberglass
- ◆ Entrance Door - 30"
- ◆ * Stormtite Windows—Thermopane Glass
- ◆ Seamless Fiberglass Frt. & Rear Caps
- ◆ Roof Rack & Ladder
- ◆ Shock Absorbers (4)
- ◆ "Dicor" Vinyl Seamless Roof
- ◆ 2 Rear Stab. Jacks
- ◆ Elec. Front Jacks W/Quick Release Pins
- ◆ Aluminum Wheels (4)
- ◆ Hitch Hook Up Light
- ◆ Seamless Polypropylene Undersiding
- ◆ Battery Tray Quad
- ◆ 8' Sewer Hose Compartment
- ◆ Automotive Undercoat
- ◆ * Central Roof AC W/Heat Pump
- ◆ 15' Awning
- ◆ Fold Away Assist Rail
- ◆ Underslung Tire
- ◆ Curbside Scare Light
- ◆ * Compartment Doors w/1" Ins.

MECHANICAL/CONSTRUCTION

- ◆ * 2" Vac-U-Lam Sidewalls
- ◆ * 3/8" Plywood Roof Deck
- ◆ * Tapered Truss Roof
- ◆ * R-11 Insulation - Roof
- ◆ 16" Radials
- ◆ Dexter Nev-R-Lube Axles W/Elec. Brakes (12 1/4" x 3 3/8")
- ◆ * "Dual" 2 Stage Furnaces 23-34 BTU each
- ◆ * Heated & Insulated Holding Tank Compartments
- ◆ 45 Amp Power Converter W/Batt. Charger
- ◆ * Cable Ext. - Termination Valves
- ◆ XT16 Gas/Elec. DSI Water Heater 36 L (10 US Gal.) W/Bypass Valves
- ◆ Toilet Holding Tank 203 L (53.4 US Gal.)
- ◆ Fresh Water 232 L (61 US Gal.)
- ◆ Grey Water 194 L (51 US Gal.)
- ◆ Dual Propane Bottles 13.6 Kg ea. (30 lbs. ea.) W/Auto CO Reg.
- ◆ Slide Out Propane Tray
- ◆ Black Tank Flush
- ◆ Aluminum Wheels (4)
- ◆ Solar Panel & Satellite Pre-wire
- ◆ Antifreeze Pick Up System
- ◆ Adjustable Height Spring Hangers

OPTIONS AVAILABLE

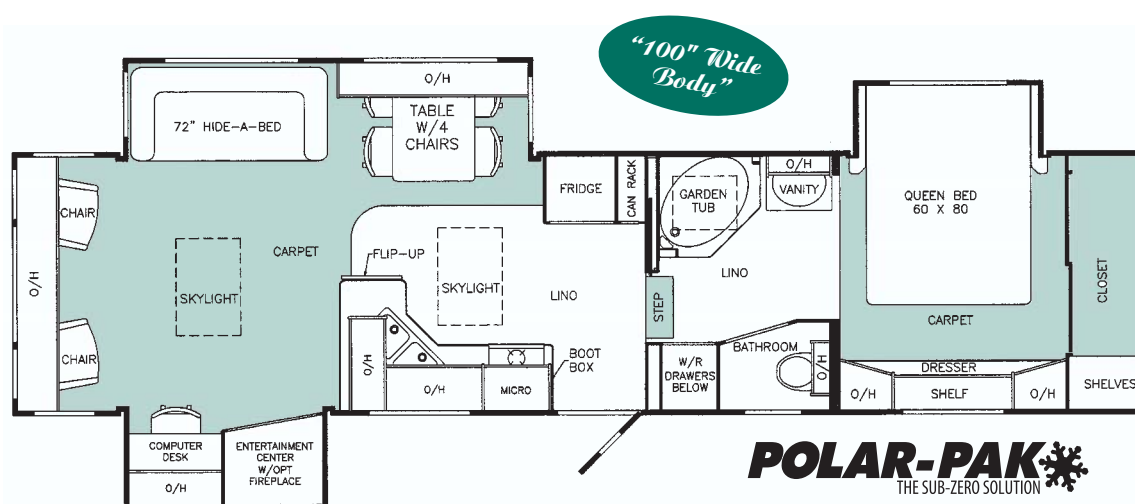
- ◆ "Weather Pro" Electric Awning*
- ◆ Awning Upgrade 9000 Series
- ◆ Awning on Bedroom Slide
- ◆ * Attic Ventilation System*
- ◆ Coffee Table
- ◆ Dinette ILO F/S Table*
- ◆ Exterior Shower*
- ◆ Electric Fireplace
- ◆ Laminate Kitchen Floor*
- ◆ Bedroom Pocket Door*
- ◆ "Fabric Leather" Recliners - 30"*
- ◆ Range w/Deep Oven*
- ◆ Hideabed w/Footrest
- ◆ Maple End Table
- ◆ Fabric Recliners - 30"
- ◆ Garden Shower ILO Garden Tub*
- ◆ Round Dining Table
- ◆ "Norcold" 10 cu. ft. Fridge
- ◆ Central Vacuum*
- ◆ Solar Panel*
- ◆ Washer/Dryer Cabinet & 50 Amp Service*
- ◆ Washer/Dryer—1 pc. Splendid Water Filter
- ◆ Generator Compartment* (25x33)
- ◆ Memory Foam Mattress Pad
- ◆ 12 Volt Disconnect*
- ◆ Electric Rear Stabilizer Jacks*

* Before Production Only.



Specifications are subject to change without notice or obligation.

FIFTH WHEEL MODEL 34RLTS



POLAR-PAK
THE SUB-ZERO SOLUTION

SPECIFICATIONS

GVWR	6806 Kg/14,800 lbs.
Dry Weight	56942 Kg/12,550 lbs.
Net Carrying Capacity	1021 Kg/2,250 lbs.
Axle Capacity	6352 Kg/14,000 lbs.
Hitch Weight	935 Kg/2,060 lbs.
Height*	3.8 M/12'4"
Width	2.5 M/8'4"
Length	10.7 M/35'3"
Exterior Storage	113 cu. ft.

* Approximate height to top of air conditioner

STANDARD FEATURES

BATH/BEDROOM

- ◆ Fiberglass Garden Tub Enclosure W/Residential Faucet
- ◆ Porcelain Toilet W/Pedal Flush
- ◆ 6'0" Bedroom Height
- ◆ Queen Mattress—80" x 60"
- ◆ Bedspread & Pillows
- ◆ Day/Nite Fabric Blinds
- * ◆ "Fantastic" Vent Fan
- ◆ "Karadon" Solid Surface Vanity
- ◆ "Sta-Tite" Slide W/Manual Override
- ◆ TV Pre-Wire in Bedroom
- * ◆ Residential Skylight with Moisture Control
- ◆ Vanity W/Acrylic Sink & Moen Faucet
- ◆ Fluorescent Light in Bath
- ◆ Tooth Brush Holder, Soap Dish
- ◆ CO Detector
- ◆ Clothes Hamper in Bedroom

KITCHEN

- ◆ Large Countertop W/Acrylic Sink & "Moen" Faucet W/Spray
- ◆ Knife Block
- ◆ "Atwood" High Output Range Top
- ◆ Norcold 8 cu. ft. Fridge W/Aluminum Laminate Door Panels
- ◆ Kitchen Drawers—Birch Plywood—Nylon Rollers & Steel Guides
- ◆ "Karadon" Solid Surface Countertop
- ◆ Raised Maple Doors
- ◆ Hardwood Table & 4 High Back Chairs
- ◆ Fluorescent Lights in Ceiling
- * ◆ "Fantastic Rain Sensor" Vent Fan
- * ◆ Residential Skylight with Moisture Control & Blind
- ◆ Propane Leak Detector
- ◆ Clock
- ◆ Convection Microwave W/120V Range Hood
- ◆ Decorative Mirror
- ◆ Double Can Storage Rack

LIVING ROOM

- ◆ 27" Flatscreen TV
- ◆ Residential Home Theatre Stereo W/CD & DVD Player & Surround Sound
- ◆ Cable/Telephone Hook Up
- ◆ Fire Extinguisher & Smoke Detector
- ◆ 120 V. Lights & Receptacle in Slide Out
- ◆ Day/Nite Fabric Blinds
- ◆ Maple & Fabric Fascia - L.R. Slides
- ◆ Electric "Sta-Tite" Rack & Pinion Super Slides—"Flush Floor"
- ◆ Fluorescent Lights in Ceiling
- ◆ Hide A Bed - 72"
- ◆ TV Antenna
- ◆ 2 - 28" Recliner/Chairs
- ◆ Reading Lights
- * ◆ Residential Skylight with Moisture Control & Blind
- ◆ Chair at Computer Desk
- ◆ Video Control Center

EXTERIOR

- ◆ Entrance Door - 30"
- * ◆ Stormite Windows—Thermopane Glass
- ◆ Seamless Fiberglass Caps
- ◆ Roof Rack & Ladder
- ◆ Shock Absorbers (4)
- ◆ "Dicor" Vinyl Seamless Roof
- ◆ 2 Rear Stab. Jacks
- ◆ Elec. Front Jacks W/Quick Release Pins
- ◆ Hitch Hook Up Light
- ◆ Seamless Polypropylene Undersiding
- ◆ Battery Tray Quad
- ◆ 8' Sewer Hose Compartment
- ◆ Automotive Undercoat
- ◆ Central Roof AC W/Heat Pump
- ◆ 20' Awning A&E
- ◆ Fold Away Assist Rail
- ◆ Underslung Tire
- ◆ Curbside Scare Light
- * ◆ Compartment Doors w/1" Ins.

MECHANICAL/CONSTRUCTION

- * ◆ 2" Vac-U-Lam Sidewalls
- * ◆ 3/8" Plywood Roof Deck
- * ◆ Tapered Truss Roof
- * ◆ R-11 Insulation - Roof
- ◆ 16" Radials
- ◆ Dexter Nev-R-Lube Axles W/Elec. Brakes (12¹/₄" x 3³/₈")
- * ◆ "Dual" 2 Stage Furnaces 23-34 BTU
- * ◆ Heated & Insulated Holding Tank Compartments
- ◆ 45 Amp Power Converter W/Batt. Charger
- * ◆ Insulated Slide Floors 2³/₈"
- ◆ XT16 Gas/Elec. DSI Water Heater 36 L (10 US Gal.) W/Bypass Valves
- ◆ Toilet Holding Tank 203 L (53.4 US Gal.)
- ◆ Fresh Water 232 L (61 US Gal.)
- ◆ Grey Water 194 L (51 US Gal.)
- ◆ Dual Propane Bottles 13.6 Kg ea. (30 lbs. ea.) W/Auto CO Reg.
- ◆ Slide Out Propane Tray
- ◆ Black Tank Flush
- ◆ Solar Panel & Satellite Pre-wire
- ◆ Adjustable Height Spring Hangers

OPTIONS AVAILABLE

- ◆ "Weather Pro" Electric Awning*
- ◆ Awning Upgrade 9000 Series
- ◆ Awning on Bedroom Slide
- * ◆ Attic Ventilation System*
- ◆ Coffee Table
- ◆ Laminate Kitchen Floor*
- ◆ Dinette ILO F/S Table*
- ◆ Exterior Shower*
- ◆ Bedroom Pocket Door*
- ◆ Electric Fireplace
- ◆ "Fabric Leather" Recliners - 30"
- ◆ "Fabric Leather" Hide-a-bed - 72"
- ◆ Fabric Recliners - 30"
- ◆ Garden Shower ILO Garden Tub*
- ◆ Maple End Table
- ◆ Round Dining Table
- ◆ Electric Rear Stabilizer Jacks*
- ◆ Solar Panel*
- ◆ "Norcold" 10 cu. ft. Fridge
- ◆ Central Vacuum*
- ◆ Washer/Dryer Cabinet & 50 Amp Service*
- ◆ Washer/Dryer—1 pc. Splendid
- ◆ Generator Compartment* (25x33)
- ◆ Memory Foam Mattress Pad
- ◆ Water Filter
- ◆ 12 Volt Disconnect*
- ◆ Range w/Oven*

* Before Production Only.

Specifications are subject to change without notice or obligation.

POLAR PAK FEATURES



*POLAR PAK FEATURES - YOUR SUB ZERO SOLUTION



General Coach has developed the best all season product available today. The exclusive Polar Pak Features are a combination of Canadian residential components and proven all season residential construction techniques. Our full wood frame Vacuum laminated walls are 2" thick, residential style truss roof and framed floor with 5/8" plywood will not sweat or conduct heat and cold as aluminum framing.



The "Dayliter" skylights from Richmond, BC are the best residential skylight on the market today. Only "Dayliter" skylights control interior moisture build up by catching the moisture in a drip rail and weeping the moisture to the exterior not back into the unit or into the roof cavity. Integral venting allows air to flow between the dual aircraft acrylic panes to prevent frost or moisture forming.



Made in Canada "Stormtite" thermopane windows are proven to be the best all season windows with an extra heavy duty frame and the only framed sliding section that locks in the closed position for a positive seal against dust and moisture. The solar reflective glass also provides daytime privacy and reduces heat build up by 10 to 15%.



The exclusive "Attic" ventilation system allows fresh air to be circulated through the ceiling cavity to reduce heat in the summer and condensation in the winter. The system consists of a fresh air intake at the rear of the unit and a 12 volt marine extraction fan on the roof above the bedroom. The fan is controlled by a 2 speed switch in the roadside cabinet.

"Excalibur XT" Two Stage furnaces conserve fuel and reduce noise for quieter nights. Set the digital thermostat and let the furnace take over. During cold start-ups the furnace operates on the high BTU and high fan for quick quiet warm up. Then, when the temperature is reached the furnace automatically switches to low BTU and low fan to maintain the set temperature. The Models 32.5TKS and larger have 2 separate furnace systems for the best control of temperature through out the unit.



All models have the "Fantastic" Rain Sensor vent fans in the living area. The rain sensor is controlled from a wall thermostat that can be set according to temperature and humidity. Larger models also have a "Fantastic" vent fan above the vanity to control the bathroom humidity.



Holding Tanks are enclosed within a steel compartment that is insulated and heated with a direct duct from the furnace. Most models have the dump valve handles located above in a heated storage compartment, easy access and protected from road hazards. Compartment doors have 1" of High Density Foam Insulation.

New for 2006 is the "Atwood XT" gas/electric water heater that provides 16 gallons of hot water from a 10 gallon tank.



Specifications are subject to change without notice or obligation.



The 30 Rear Lounge Double Slide shown above boasts an exceptionally open floor plan and a generous kitchen area due to General Coach's exclusive 100" wide body design. Large panoramic windows, residential skylight, modern Hide-a-Bed and two swivel recliners compliment the rear living room. Optional Bedroom Slide Out shown on page 20.

Model 30RLDS – Elegance Decor

“When we purchased our previous General Coach 5th Wheel we were sent a survey form. There were 3 things that we felt could have been improved upon. You actually listen to customers! When we chose our new General Coach 5th Wheel (Model 30RLDS) those suggestions were made. We're really pleased to deal with a company who does listen to and care about their customers. Also, the workmanship and comfort of our unit are tops. The people who are on the assembly line truly take pride in their work and it shows, when you look at how well these units are built inside and out.

Lloyd & Jan Harvey
Cranbrook, British Columbia



The Model 30RLDS kitchen features a large double pull out can rack, deluxe "Atwood" high output range, numerous large full depth drawers, deep, scratch resistant acrylic fiberglass sink and a top quality "Moen" faucet with spray. The optional "Norcold" 10 cubic foot refrigerator maximizes usable storage space.

Our unique slide out construction features a 2 3/8" thick full frame insulated floor; a solid maple and fabric fascia and is double sealed in the open or closed position. The slide system combines a rack and pinion drive with steel rollers and a built in travel locking system. No cables or hydraulics to worry about.



Model 30RLDS – Elegance Decor

Specifications are subject to change without notice or obligation.



30" Glider Recliner Rockers shown in the Elegance Fabric are available in Fifth Wheel Models 30 and larger. Relax in residential comfort and enjoy the JVC Home Theatre Surround Sound System standard in all models 28 and larger. The residential Hide-a-Bed is available with the optional retractable footrest. The 30" Glider Recliners are designed with a travel lock to prevent damage on rough roads.



Hand-cranked stabilizing becomes a backache of the past with the optional Quick Draw Electric Stabilizer Jacks. Both jacks operate together and ensure equal pressure is on both legs. A touch of the switch results in a level and stable unit. The maximum support is 3200 lbs. A 3 Year warranty provides peace of mind.

Optional "Carefree" Awnings over the Bedroom Slide Out provides extra protection from the elements. The Bedroom slide outs are optional in the Models 29CKS, 29.5RLS, 30RLDS and standard in Model 29RKDS, 31.5RLS and larger.





The top selling rear kitchen Model 29RKDS shown in the rich Autumn Fern decor combines exceptional residential livability in a very towable 30'. Abundant storage with the full width kitchen cabinetry and superb lighting from the large residential skylight and numerous windows ensures your comfort. The optional "Norcold" 10 cubic foot refrigerator is a great addition for the full timer. New for 2006 is the "Atwood" XT Water heater that provides the equivalent hot water to a 16 gallon tank with only a 10 gallon tank.



"We've only used our 29RKDS one season, but so far we love it!"
Lorne & Jean Wilcox, Duncan, BC

Model 29RKDS Autumn Fern Decor

Excellence You Deserve!



The very popular Model 29.5RLS has all the features of many larger models with out the extra length. The residential "Dayliter" skylight and large panoramic windows ensure that the 29.5RLS is very livable for extended travel.



Model 29.5 RLS Topaz Decor



Color co-ordinated, one piece fiberglass skirts, "Dexter Nev R Lube" axles are warranted for 5 years or 100,000 miles against defects in material or workmanship, and attractive 16" aluminum wheels with Goodyear steel belted radial tires are standard on all models. The adjustable spring hangers ensure a level ride with all tow vehicles.

"We love how the 29.5RLS is so solid. There is nothing 'Flimsy' about it. We were concerned with the weight, but our Chev 3600 8.1L V8 pulls it just fine. Thank you for a great product!"

Jake & Julie Warkentin,
Kelowna, BC



New for 2006, Model 30RLS Travel Trailer

Garden Decor

EXCELLA CONSTRUCTION CROWNED ROOF

- 1 "Dicor" vinyl roof, seamless, overlaps the sidewall, 12 year warranty
- 2 $\frac{3}{8}$ " plywood deck, screwed to truss
- 3 Fiberglass insulation R-11 full width
- 4 Engineered residential crowned truss, $5\frac{1}{4}$ " thick in centre sloped to $3\frac{1}{2}$ " on the ends
- 5 Insulated rigid air conditioning duct - 2"
- 6 Drip rail with down spouts
- 7 Interior ceiling panel - plywood

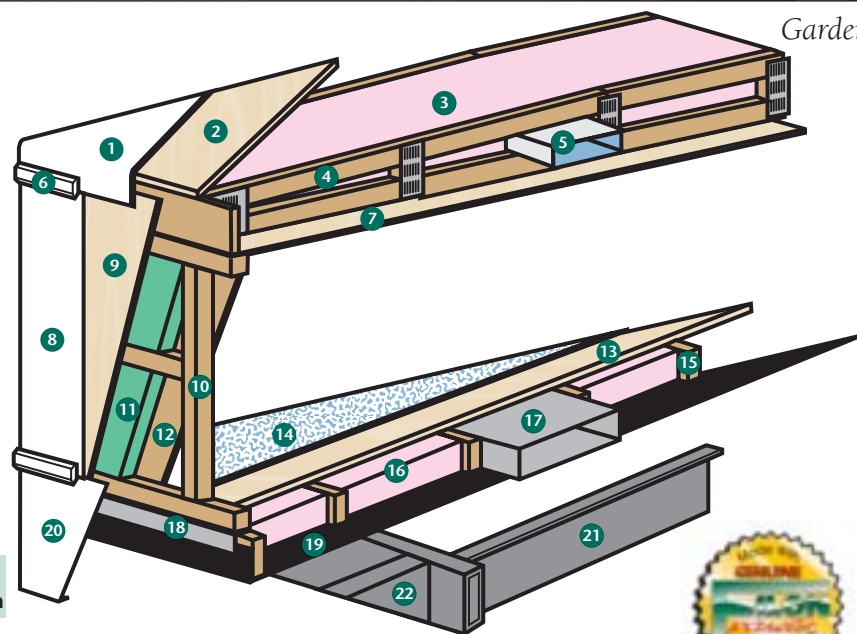
VACUUM BONDED WALL

- 8 "Medallion Filon" gelcoat panels
- 9 Plywood substrate
- 10 Kiln dried studs - 2x2, 2x4, 2x6
- 11 Ultra high density rigid polystyrene insulation
- 12 Interior panel - plywood

Walls on all models are framed utilizing 2" x 2", 2" x 3" and 2" x 6" kiln dried studs, steel reinforced and mounted directly on top of the foundation floor.

The sidewalls are individually laminated, cured under vacuum pressure and tear tested for a perfect bond prior to installation. Laminated to plywood, the Filon gelcoat panels are warranted for 2 years materials and labor and guarantees a high resale value as it retains colour and lustre and won't rust, corrode, ding or dent.

POLAR-PAK
THE SUB-ZERO SOLUTION



FOUNDATION FLOOR

- 13 $\frac{5}{8}$ " plywood tongue & groove deck - glued and screwed to studs
- 14 Vinyl flooring residential installation
- 15 Kiln dried studs
- 16 Fiberglass insulation
- 17 Galvanized steel heat ducting (not all models)
- 18 Galvanized steel flashing

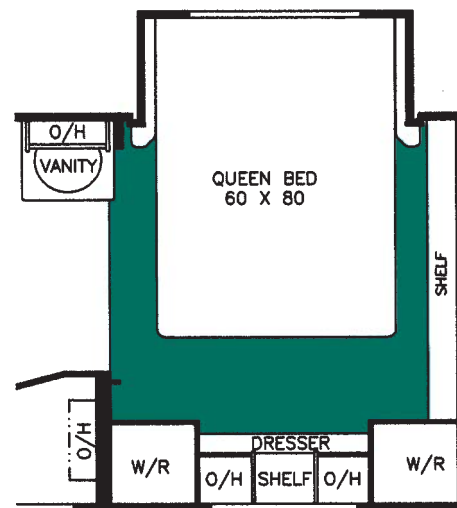
- 19 Seamless polypropylene undersiding complete wrap up sides, front and rear
- 20 Fiberglass radius skirt, double sealed at marriage
- 21 Floor is bolted to steel chassis. Steel is fully undercoated with automotive undercoat. Holding tanks are enclosed, insulated and protected within the 12 gauge steel chassis members and heated directly from the furnace.
- 22 12 gauge steel outriggers support full width of floor.





As a before production option the Models 29CKS, 29.5RLS and 30RLDS can be ordered with a bedroom slide. This option boasts a dresser with six large drawers as well as two extra large mirrored wardrobes to accommodate all your personal items. This bedroom slide option does not alter the overall length and only increases the hitch weight by approximately 300 lbs. The GVWR will be increased accordingly for each model.

Model 29CKS Autumn Fern Decor



OPTIONAL
BEDSLIDE

Models 29CKS, 29.5RLS, 30RLDS

FIFTH WHEEL

Optional Bedroom Slide

Most models with the Garden Tub can be ordered with the optional garden shower designed for ease of access. The optional pocket door improves bedroom privacy and is available in all walk thru bath models.

Excellence You Deserve!

Optional Pocket Door to Bedroom
& Optional Shower in lieu of Garden Tub.
Optional Shower not available in Model
31CKDS-XL



Corsair Excella - Excellence You Deserve!!



General Coach is proud of our 99% customer satisfaction record.
But don't take our word for it, ask our owners for *their* opinions.

“After owning a General Coach product, we would not consider buying any other RV!
The quality of our trailer is exceptional, and have recommended your company to anyone interested in purchasing a unit.

Harley Jeanotte
Prince George, British Columbia

“All things being considered, I think the people who designed and built this trailer deserve a thank you from my wife and myself. We are proud of our built in B.C. trailer by professional union workers. It is a really nice home for us when we are working out of town.

Dale Gage
Kamloops, British Columbia

“We have been extremely pleased with the performance of our General Coach. We looked at many different brands of 5th wheel over the last few years and talked to many Rvers. Your product certainly stood out in many ways and General Coach's reputation is very good in the RV community. There are many, many features that make our travels extremely comfortable and enjoyable.

Alan & Shirley Nauss
Surrey, British Columbia

“General Coach of course. The main reason is quality workmanship and very few warranty claims, if any! We bought another another brand (1996) with slide because we didn't feel we could afford the General Coach of the same model - Huge mistake! Once you own a General Coach nothing else can compare! Our 32RKS has everything we could want and more.

Merv & Sylvia Toliver
Cranbrook, British Columbia

“You make a great product. My wife and I really enjoyed our first General Coach and that was probably the main reason we bought another. It is very functional, easy to tow and park. We spend 8-9 months of the year in our unit so we like our home to be a “real home”. We are certainly glad we bought another General Coach.

Ray & Suzanne Elphick
Red Deer, Alberta

“This is our third General Coach 5th wheel, whenever we upgrade we have checked out other manufacturers and have not found any other 5th wheel that had the quality of General Coach.

Willie Giesbrecht
Vanscoy, Saskatchewan

“The Model 33RLTS is an outstanding unit, with few if any features left out. Please thank all the engineers, designers and staff for a job well done.

Elaine & John Paton
Fort McMurray, Alberta

“In 2002 we took a factory tour of General Coach in Oliver and found the best quality construction and the most attractive unit appearance both inside and out. Although the price was slightly more than others we aren't sorry at all we made the purchase. The quality is excellent, the decor is excellent, we really enjoyed the trailer in Kelowna and Fairmont. We get lots of compliments in campgrounds. We certainly appreciate the value for our dollars. The truck easily pulls the trailer and it is very well balanced. Thank you for building a great fifth wheel, we really enjoy it!

Steve & Pat Truhamchuk
Edmonton, Alberta

“In 1989, we took five factory tours in BC and Alberta, including General Coach in Oliver. General Coach was the best quality and had the most attractive appearance. Although the price was slightly more than the others, we bought our first General Coach in 1991 and have never been sorry. In October of 2000, we bought our second General Coach Fifth Wheel. The quality is still excellent and with more features, we really enjoy our trailer. We get lots of compliments in campgrounds. We certainly appreciate the value for our dollars. Thanks for building a great fifth wheel.

Cleave & Diane Buckton
Maple Ridge, British Columbia

The following is an excerpt from the “RV Times” magazine:

“We really do enjoy your publication. Our last trip was of three months duration: 16,200 miles, most of them in Canada. We would like to sing the praise of our new trailer built by General Coach in B.C. Our travel is always off-season and we looked for something that would be comfortable on the Alaska Highway in winter. More Canadians should know about this product.

Eva Books
Skagway, Alaska

“We believe that the General Coach line is one of the top lines in North America. We have owned 7 General Coach products.

Heinz & Marlene Leuenberge
150 Mile House, British Columbia



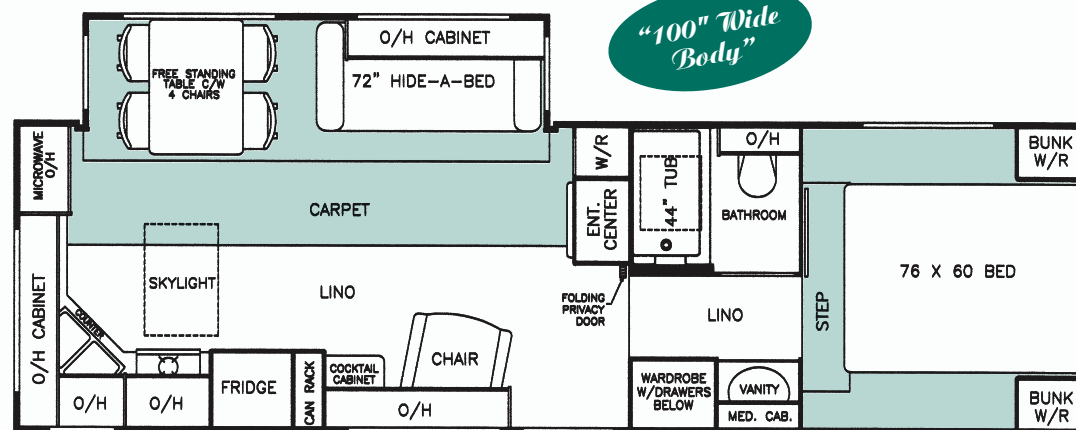


FIFTH WHEEL MODEL 28.5RKS

SPECIFICATIONS

GVWR	5218 Kg/11,500 lbs.
Dry Weight	4360 Kg/9,610 lbs.
Net Carrying Capacity	858 Kg/1,890 lbs.
Axle Capacity	4719 Kg/10,400 lbs.
Hitch Weight	760 Kg/1,675 lbs.
Height*	3.6 M/11'10"
Width	2.5 M/8'4"
Length	9.1 M/29'11"
Exterior Storage	70 cu. ft.

* Approximate height to top of air conditioner



POLAR-PAK
THE SUB-ZERO SOLUTION

STANDARD FEATURES

BATH/BEDROOM

- ◆ "Moen" Vanity Faucet
- ◆ Power Vent in Bath
- ◆ CO Detector
- ◆ Residential Fiberglass Tub 44" W/Glass Door
- ◆ Porcelain Toilet W/Pedal Flush
- ◆ Escape Window in Bedroom
- ◆ 5'9" Bedroom Height
- ◆ Queen Mattress—76" x 60"
- ◆ Co-ord. Bedspread & Pillows
- ◆ Day/Nite Fabric Blinds
- ◆ TV shelf in Bedroom
- ◆ Tooth Brush Holder, Soap Dish
- * Residential Skylight with Moisture Control

KITCHEN

- ◆ Knife Block
- ◆ Jensen Range Hood W/Systems Monitor
- ◆ "Atwood" High Output Range
- ◆ "Norcold" 8 cu. ft. Fridge W/Aluminum Laminate Door Panels
- ◆ Acrylic Kitchen Sink W/"Moen" Faucet W/Spray
- * "Fantastic Rain Sensor" Vent Fan
- ◆ Kitchen Drawers—Birch Plywood—Nylon Rollers & Steel Guides
- ◆ Hardwood Table & 4 High Back Chairs
- ◆ Fluorescent Light in Ceiling
- ◆ Double Can Storage Rack
- ◆ Raised Maple Cabinet Doors W/Brushed Nickel Handles
- * Residential Skylight with Moisture Control & Blind

LIVING ROOM

- ◆ Cable/Telephone Hook Up
- ◆ Smoke Detector
- ◆ Fire Extinguisher
- ◆ Residential Hide A Bed - 72"
- ◆ 120 V. Lights & Receptacle in Slide Out
- ◆ Cocktail Chair 28" (Recliner)
- ◆ Day/Nite Fabric Blinds
- ◆ Fluorescent Light in Ceiling
- ◆ Entertainment Center
- ◆ 20" Flatscreen TV
- ◆ Maple & Fabric Fascia - L.R. Slide

EXCELLA STANDARD FEATURES

- ◆ Central Roof AC—13.5 BTU
- ◆ 18' Awning A+E
- ◆ Microwave Oven
- ◆ TV Antenna
- ◆ Battery Tray Double
- ◆ Black Tank Flush
- ◆ Fold Away Assist Rail
- ◆ Propane Leak Detector
- ◆ Residential Home Theater CD/DVD Stereo with Surround Sound System 120V.
- ◆ Aluminum Wheels (4)

EXTERIOR

- ◆ "Medallion Filon" High Gloss Fiberglass
- * Stormtite Windows—Thermopane Glass
- ◆ Seamless Fiberglass Frt. & Rear Caps
- ◆ Fiberglass Skirts/Fenders
- * Compartment Doors w/1" Insulation
- ◆ Roof Rack & Ladder
- ◆ Shock Absorbers (4)
- ◆ 2 Rear Stab. Jacks
- ◆ Elec. Front Jacks W/Quick Release Pins
- ◆ "Dicor" Vinyl Roof
- ◆ Curbside Scare Light
- ◆ Seamless Polypropylene Undersiding
- * 2" Vac-U-Lam Sidewalls W/Dbl. Plywood
- ◆ Full Width Storage Lighted
- ◆ Dexter Nev-R-Lube Axles W/12" Brakes
- ◆ 16" Radials w/Spare
- * 3/8" Plywood Roof Deck
- ◆ 8' Sewer Hose Compartment
- ◆ Automotive Undercoating
- ◆ Adjustable Height Spring Hangers

MECHANICAL/CONSTRUCTION

- * Crowned Truss Roof R-11 Insulation
- * 2 Stage Furnace 23-34 BTU
- * Heated & Encl. Holding & Fresh Water Tanks
- ◆ 45 Amp Power Converter W/Batt. Charger
- ◆ Hot Water Bypass Valves
- ◆ XT16 Gas/Elec. Water Heater W/DSI—36 L (10 US Gal.) Equiv. to 16 Gal.
- ◆ Fresh Water 241 L (64 US Gal.)
- ◆ Toilet Holding Tank 203 L (53.4 US Gal.)
- ◆ Grey Water 194 L (51 US Gal.)
- ◆ Dual Propane Bottles 13.6 Kg ea. (30 lbs. ea.)
- ◆ Electric "Sta-Tite" Slide Out W/Manual Override—"Flush Floor"
- ◆ Auto Change Over Propane Reg.
- ◆ Solar Panel & Satellite Pre-wire
- ◆ Antifreeze Pick Up System
- * Insulated Slide Out Floor 2³/8"

OPTIONS AVAILABLE

- ❖ "Weather Pro" Electric Awning*
- ❖ Awning Upgrade 9000 Series
- * Attic Ventilation System*
- ❖ Central Vacuum*
- ❖ Computer Desk ILO Cabinet*
- ❖ Dinette ILO F/S Table*
- ❖ Maple Coffee Table
- ❖ Exterior Shower*
- ❖ "Norcold" 10 cu. ft. Fridge
- * "Fantastic" Vent Fan - Bedroom
- ❖ Round Dining Table
- ❖ Memory Foam Mattress Pad
- ❖ Solar Panel*
- ❖ Solid Surface Kitchen & Vanity Counters*
- ❖ Maple Fridge Door Panels
- ❖ Twin Beds*
- ❖ Water Filter
- ❖ Generator Compartment*
- ❖ 12 Volt Disconnect*
- ❖ Laminate Kitchen Floor*
- ❖ Electric Rear Stabilizer Jacks*

* Before Production Only.

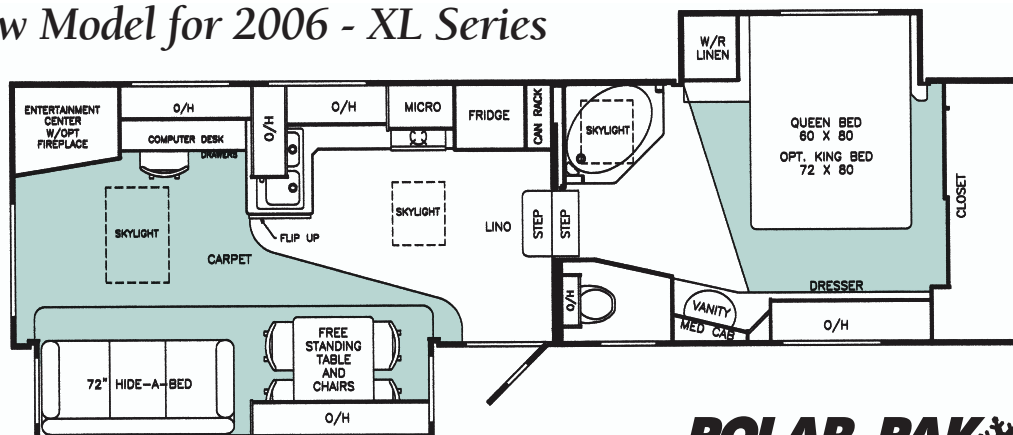
Specifications are subject to change without notice or obligation.



FIFTH WHEEL MODEL 31CKDS



New Model for 2006 - XL Series



POLAR-PAK
THE SUB-ZERO SOLUTION

SPECIFICATIONS

GVWR	5898 Kg/13,000 lbs.
Dry Weight	4914 Kg/10,830 lbs.
Net Carrying Capacity	985 Kg/2,170 lbs.
Axle Capacity	5430 Kg/12,000 lbs.
Hitch Weight	876 Kg/1,930 lbs.
Height*	3.9 M/12'9"
Width	2.5 M/8'4"
Length	9.9 M/32'4"
Exterior Storage	107 cu. ft.

* Approximate height to top of air conditioner

STANDARD FEATURES

BATH/BEDROOM

- ◆ "Moen" Vanity Faucet
- ◆ Power Vent in Toilet Compartment
- ◆ CO Detector
- ◆ Residential Fiberglass Garden Tub W/Glass Door
- ◆ Porcelain Toilet W/Pedal Flush
- ◆ Escape Window
- * ◆ "Fantastic" Vent Fan
- ◆ Flat Floor Bath & Bedroom
- ◆ 6'6" Bedroom Height
- ◆ Queen Mattress—60" x 80"
- ◆ Co-ord. Bedspread & Pillows
- ◆ Day/Nite Fabric Blinds
- ◆ "Sta-Tite" BR Slide W/Manual Override
- ◆ TV Pre-Wire in Bedroom
- ◆ Tooth Brush Holder, Soap Dish
- ◆ Clothes Hamper in Bedroom

KITCHEN

- ◆ Knife Block
- ◆ Jensen Range Hood W/Systems Monitor
- ◆ "Atwood" High Output Range
- ◆ Norcold 8 cu. ft. Fridge W/Aluminum Laminate Door Panels
- ◆ 7'7" Interior Height
- ◆ Fluorescent Light in Ceiling
- ◆ Hardwood Table & 4 High Back Chairs
- ◆ Acrylic Kitchen Sink W/"Moen" Faucet W/Spray
- ◆ Kitchen Drawers—Birch Plywood—Nylon Rollers & Steel Guides
- ◆ Raised Maple Cabinet Doors W/Brushed Nickel Handles

LIVING ROOM

- ◆ Cable/Telephone Hook Up
- ◆ Fire Extinguisher & Smoke Detector
- ◆ 120 V. Lights & Receptacle in Slide Out
- ◆ Co-ord. "C" Valances
- ◆ Day/Nite Fabric Blinds
- ◆ Electric "Sta-Tite" Slide W/Manual Override—"Flush Floor"
- ◆ Fluorescent Light in Ceiling
- ◆ 27" Flatscreen TV
- ◆ Maple & Fabric Fascia - L.R. Slide
- * ◆ "Fantastic Rain Sensor" Vent Fan
- ◆ Computer Desk w/Chair
- ◆ 6'2" Height in Slide Out

EXCELLA STANDARD FEATURES

- * ◆ Central Roof AC—15 BTU W/Heat Pump
- ◆ 15' Awning
- ◆ Microwave Oven
- ◆ TV Antenna
- ◆ Battery Tray Quad
- ◆ Black Tank Flush
- ◆ Fold Away Assist Rail
- ◆ Hide A Bed - 72"
- ◆ Propane Leak Detector
- * ◆ Residential Skylights/Living Room & Kitchen w/Moisture Control
- * ◆ Residential Skylight/Tub w/Moisture Control
- ◆ Residential Home Theater Stereo System w/CD & DVD Player - 120V

EXTERIOR

- ◆ Medallion Filon High Gloss Fiberglass
- * ◆ Stormite Windows—Thermopane Glass
- ◆ Seamless Fiberglass Frt. & Rear Caps
- ◆ Fiberglass Skirts/Fenders
- * ◆ Compartment Doors w/1" Insulation
- ◆ Roof Rack & Ladder
- ◆ Shock Absorbers (4)
- ◆ 2 Rear Stab. Jacks
- ◆ "Dicor" Vinyl Roof
- ◆ Elec. Front Jacks W/Quick Release Pins
- ◆ Hitch Hook Up Light
- ◆ Seamless Polypropylene Undersiding
- * ◆ 2" Vac-U-Lam Sidewalls W/DbL. Plywood
- * ◆ 3/8" Plywood Roof Deck
- ◆ Locking Water Fill & Power Cord Compartment
- ◆ Dexter Nev-R-Lube Axles W/12" Brakes
- ◆ 16" Radials w/Spare
- ◆ 8' Sewer Hose Compartment
- ◆ Automotive Undercoat
- ◆ Curbside Scare Light
- ◆ Adjustable Height Spring Hangers

MECHANICAL/CONSTRUCTION

- * ◆ Crowned Truss Roof R-11 Insulation
- * ◆ 2 Stage Furnace 25-40 BTU
- * ◆ Heated & Encl. Holding & Fresh Water Tanks
- ◆ 45 Amp Power Converter W/Batt. Charger
- ◆ Hot Water Bypass Valves
- ◆ XT16 Gas/Elec. Water Heater W/DSI—36 L (10 US Gal.)
- ◆ Aluminum Wheels (4)
- ◆ Cable Ext. - Termination Valves
- ◆ Toilet Holding Tank 203 L (53.4 US Gal.)
- ◆ Fresh Water 232 L (60 US Gal.)
- ◆ Grey Water 194 L (51 US Gal.)
- ◆ Dual Propane Bottles 13.6 Kg ea. (30 lbs. ea.)
- ◆ Auto Change Propane Regulator
- ◆ Solar Panel & Satellite Pre-wire
- ◆ Antifreeze Pick Up System
- * ◆ Insulated Slide Out Floors 2 3/8"

OPTIONS AVAILABLE

- ◆ "Weather Pro" Electric Awning*
- ◆ Awning Upgrade 9000 Series
- * ◆ Attic Ventilation System*
- ◆ Awning on Bedroom Slide
- ◆ Laminate Kitchen Floor*
- ◆ Dinette ILO F/S Table*
- ◆ Exterior Shower*
- ◆ Electric Fireplace
- ◆ Solid Surface Kitchen & Computer Counters*
- ◆ "Norcold" 10 cu. ft. Fridge
- ◆ King Bed 72x80*
- ◆ Maple Fridge Panels
- ◆ Hideabed w/Footrest
- ◆ Maple End Table 36x13
- ◆ Round Dining Table
- ◆ Solar Panel*
- ◆ Water Filter
- ◆ 17" LCD TV in Bedroom
- ◆ Recliner w/flip up shelf ILO Computer Desk & Chair*
- ◆ Generator Compartment* (25x33)
- ◆ 12 Volt Disconnect*
- ◆ Memory Foam Mattress Pad
- ◆ Electric Rear Stabilizer Jacks*

* Before Production Only.

Specifications are subject to change without notice or obligation.





TRAVEL TRAILER MODEL 30RLS

New for 2006

SPECIFICATIONS

GVWR

5263 Kg/11,600 lbs.

Dry Weight

4274 Kg/9420 lbs.

Net Carrying Capacity

989 Kg/2,188 lbs.

Axle Capacity

5455 Kg/12,000 lbs.

Hitch Weight

349 Kg/770 lbs.

Height*

3.4 M/11'3"

Width

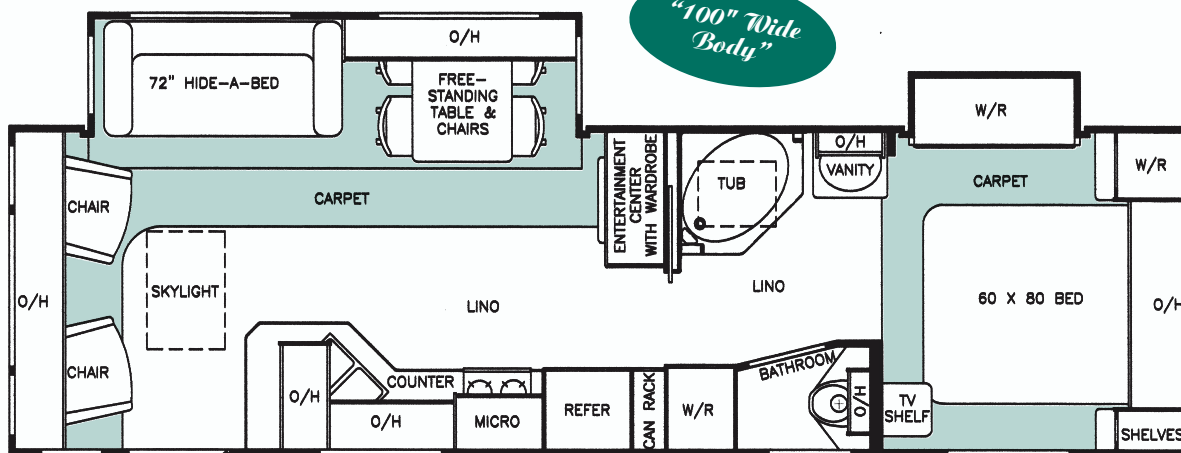
2.5 M/8'4"

Length

10.6 M/34'11"

Exterior Storage

35 cu. ft.



* Approximate height to top of air conditioner

POLAR-PAK
THE SUB-ZERO SOLUTION

STANDARD FEATURES

BATH/BEDROOM

- ◆ "Moen" Vanity Faucet
- ◆ Power Vent in Toilet Compartment
- ◆ GFI Receptacle/Bath
- ◆ Residential Fiberglass Tub
- ◆ Wardrobe Slide Out
- ◆ Day/Nite Fabric Blinds
- ◆ Residential Coil Spring Mattress-60" x 80"
- ◆ Co-ord. Bedspread w/Pillows
- * Residential Skylight with Moisture Control
- ◆ Glass Shower Door
- ◆ CO Detector
- * "Fantastic" Vent Fan

KITCHEN

- ◆ Knife Block
- ◆ Jensen Range Hood W/Systems Monitor
- ◆ "Atwood" High Output Range
- ◆ "Norcold" 8 cu. ft. Fridge W/Aluminum Laminate Door Panels
- ◆ Raised Maple Cabinet Doors
- ◆ Acrylic Kitchen Sink W/"Moen" Faucet w/Spray
- ◆ Kitchen Drawers-Birch Plywood-Nylon Rollers & Steel Guides
- ◆ Hardwood Table & 4 High Back Chairs
- ◆ Fluorescent Light in Ceiling
- * "Fantastic Rain Sensor" Vent Fan
- ◆ 6'8" Interior Height

LIVING ROOM

- ◆ Cable/Telephone Hook Up
- ◆ Residential Skylight with Moisture Control
- ◆ Slide Out W/120 V. Lights & Receptacle
- ◆ Day/Nite Fabric Blinds
- ◆ Home Theatre Stereo
- ◆ "Sta-Tite" Rack/Pinon Slide Mechanism-"Flush Floor"
- ◆ Raised Maple Cabinet Doors
- ◆ Fluorescent Light in Ceiling
- ◆ 2 - 28" Recliners
- ◆ 27" Flat Screen TV

EXCELLA STANDARD FEATURES

- ◆ Central Roof AC-13.5
- ◆ 18' Awning 18' A&E 8500
- ◆ Microwave Oven
- ◆ TV Antenna
- ◆ Black Tank Flush
- ◆ Fold Away Assist Rail
- ◆ Hide A Bed - 72"
- ◆ Aluminum Wheels (4)
- ◆ Antifreeze Pickup System
- ◆ Roof Rack & Ladder
- ◆ Stabilizer Jacks-Front & Rear
- ◆ TV Shelf/BR
- ◆ Propane Leak Detector

EXTERIOR

- * Stormtite Windows Thermopane Glass
- ◆ "Medallion Filon" Fiberglass Exterior
- ◆ Aerodynamic Fiberglass Caps
- ◆ Propane Bottles Cover
- ◆ Fiberglass Radius Skirt & Fenders
- * Compartment Doors w/1" Ins.
- ◆ "Dicor" Seamless Vinyl Roof
- ◆ Power Front Jack w/light
- ◆ Full Width Exterior Storage
- ◆ Hitch Hook Up Light
- ◆ Dual Battery Tray
- ◆ Polypropylene Undersiding
- ◆ Golf Club Storage
- ◆ Curbside Scare Light

MECHANICAL/CONSTRUCTION

- * Crowned Truss Roof R-11 Insulation
- * 2 Stage Furnace 23-34 BTU
- ◆ 45 Amp Power Converter W/Batt. Charger
- ◆ Hot Water Bypass Valves
- ◆ XT16 Gas/Elec. Water Heater W/DSI 36 L (10 US Gal.)
- ◆ Toilet Holding Tank 155 L (40 US Gal.)
- ◆ Fresh Water 218 L (56 US Gal.)
- ◆ Grey Water 232 L (60 US Gal.)
- ◆ Dual Propane Bottles 13.6 Kg ea. (30 lbs. ea.)
- * Insulated Slide Floors 2 3/8"
- ◆ Auto Change Over Propane Regulator
- * 2" Vac-U-Lam Sidewalls W/Dbl. Plywood
- ◆ Full Frame Construction
- ◆ 3/8" Plywood Decked Roof
- ◆ 16" Goodyear Radials
- ◆ 2-6,000 lbs. "Dexter Nev-R-Lube Axles" 100,000 Mile Warranty
- ◆ 4 Shock Absorbers & Leaf Springs
- * Heated & Enclosed Holding & Fresh Water Tanks
- ◆ Solar Panel & Satellite Pre-Wire

OPTIONS AVAILABLE

- ❖ "Weather Pro" Electric Awning
- ❖ Awning Upgrade 9000 Series
- ❖ Awning on Bedroom Slide
- ❖ Awning on Livingroom Slide
- * Attic Ventilation System*
- ❖ Central Vacuum*
- ❖ Dinette ILO F/S Table*
- ❖ Exterior Shower*
- ❖ Electric Rear Stabilizer Jacks*
- ❖ Coffee Table
- ❖ Maple End Table
- ❖ Hide-a-Bed w/footrest
- ❖ Maple Fridge Door Panels
- ❖ Laminated Kitchen Floor
- ❖ "Norcold" 10 cu. ft. Fridge
- ❖ Round Dining Table
- ❖ Solar Panel*
- ❖ Garden Shower ILO Garden Tub
- ❖ Water Filter
- ❖ 12 Volt Disconnect*
- ❖ Memory Foam Mattress Pad

* Before Production Only.

Specifications are subject to change without notice or obligation.



Our Commitment to Customer Satisfaction

Corsair's full two-year limited warranty is reinforced by a limited six-year structural integrity warranty and a two-year component warranty. Quality assurance you can depend on! This added warranty is unique to the recreational vehicle industry and should be one of your very serious considerations when choosing your next R.V.

Corsair is backed by a national dealer and service network that is some 100 strong and stretches from coast-to-coast as well as affiliates in the U.S.A. for North American worry free travel. These dealers and dealer service technicians will gladly attest to the excellence of Corsair's construction and quality.

Join thousands of General Coach customers in North America and take command of the road with your Corsair. A buying decision you'll never regret.

We are very proud of our highly skilled people who exercise extreme care in the manufacture of every Corsair. We invite you to visit us at General Coach, see the quality process yourself. We know you'll be impressed and we know you'll love the Okanagan Valley.



Model 30 RLS Travel Trailer



GENERAL COACH

P.O. Box 700
Oliver, BC V0H 1T0
Telephone: (250) 498-3471
Fax: (250) 498-3240

E-mail: gcsales@otvcablelan.net
Website: www.generalcoach.bc.ca

POLAR-PAK ❄️
THE SUB-ZERO SOLUTION



THOR
CANADA'S BEST RV VALUE

Proudly Presented By



Printed in Canada by
Wayside Press Ltd.