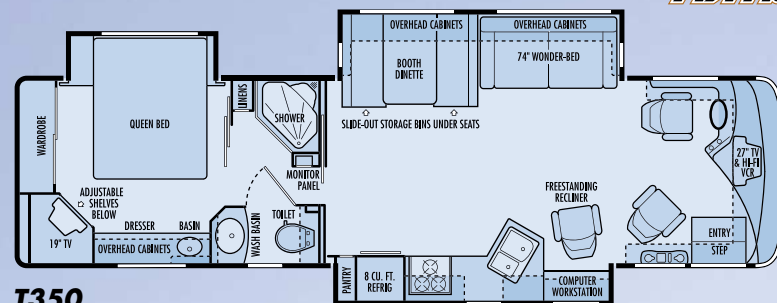


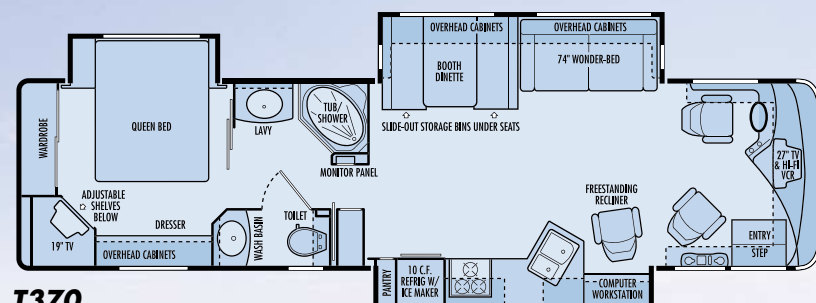
Tropi-Cal



Tropi-Cal in Spice Island



T350



T370

CHASSIS SPECIFICATIONS

FREIGHTLINER

Chassis	Freightliner® Custom Chassis XC Series (27,910 GVWR)
Chassis Design	Raised rail
Steering Gear	TRW TAS 55 power steering gear with 51° turning angle and 20.4:1 steering ratio
Tires	Michelin® radial tires 255/80R22.5 14 ply
Wheels	Steel wheels with stainless steel wheel simulators and valve extensions; 10 lugs
Service Brakes	Full air brakes with ABS; Wabco 4S/4M; 15x4" Q+cam front drums, 16.5x7" Q+cast spider cam rear drums
Alternator	Delco Remy® 130 amp alternator
Chassis Batteries	Two Alliance® 1131MF - min 1900 CCA Batteries
Front Suspension	Neway® AS-120 front-10,500 lb. capacity
Rear Suspension	Neway® ADL rear - 17,500 lb. capacity
Spring Type	Neway® full air suspension system with manual air dump
Shock Absorbers	Sachs®
Drive Axle	Meritor® RS-17-144
Drive Axle Ratio	4.63:1

Fuel Capacity	100 gallon fuel tank
Engine Block Heater	Phillips® 115V 750 watt engine block heater
Cooling Pack Mounting	Rear mounted
Air Intake Restriction Indicator	60" Flex ducting with 12" air intake pre-cleaner and a 6" intake pipe with air restriction indicator
Towing Equipment	7,000 lb. Class III hitch receiver with skid bar and six-pin electrical connector
Chassis Warranty	2 years/50,000 miles

CHASSIS SPECIFICATIONS

SPARTAN

Chassis	Spartan® Summit GTi (27,410 GVWR) (OPTIONAL FOR T370)
Chassis Design	Raised rail
Steering Gear	TRW TAS 55 power steering gear with 51° turning angle and 20.4:1 steering ratio
Tires	Michelin® radial tires 255/80R22.5(G)
Wheels	Steel wheels with stainless steel wheel simulators and valve extensions; 10 lugs
Service Brakes	Full air brakes with ABS; 15" x 4" front drums; 16.5" x 6" rear drums

Parking Brake	Spring applied, air release on rear drum brakes
Alternator	Leece-Neville® 160 Amp alternator
Chassis Batteries	Two BCI group 31 1,000 CCA
Front Suspension	Tuthill® independent front suspension
Rear Suspension	Reyco® 610AR 17,000 lb. capacity
Spring Type	Full air ride with dual ride height control valves and electronic manual air dump
Shock Absorbers	Tune Bilstein®
Driveline	Dana® Spicer 1610 series
Drive Axle	Meritor® RS-19-145
Drive Axle Ratio	4.88:1
Fuel Capacity	100 gallon fuel tank
Engine Block Heater	120V 1,000 watt engine block heater
Cooling Pack Mounting	Rear mounted
Charge Air Cooler	Cross flow
Transmission Oil Cooler	Integral to radiator; water to oil
Cooling Fan	Belt driven
Air Intake Restriction Indicator	Air intake restriction indicator
Other features	Frame mounted fuel/water separator

Towing Equipment	7,000 lb. Class III hitch receiver with skid bar and six-pin electrical connector
Chassis Warranty	2 years/50,000 miles
Engine	Caterpillar® 3126B
Displacement	7.2L
Peak Horsepower	330 HP @ 2,200 RPM
Peak Torque	860 lb/ft torque @ 1,440 RPM
Engine/Exhaust Brake	Pac Brake® exhaust brake
Engine Warranty	5 years/unlimited miles
Transmission	Allison® MH 3000
Transmission Type	Six speed automatic with 2 overdrive gears
Gear ratios	3.49:1 First gear 1.86:1 Second gear 1.41:1 Third gear 1.00:1 Fourth gear 0.75:1 Fifth gear 0.65:1 Sixth gear -5.03:1 Reverse
Transmission Shifter	T-handle electronic shifter with digital display
Transmission Warranty	3 years/unlimited miles

Due to continued product improvement, National R. V., Inc. reserves the right to change materials, colors, specifications and prices at any time without notification. Copyright © 2002 by National R. V., Inc. 11/02

TROPICAL FEATURES & SPECIFICATIONS

BODY CONSTRUCTION

Duraframe® patented steel sub-floor construction
Steel framed laminated floor
Steel framed crowned laminated fiberglass roof
Steel framed laminated fiberglass high gloss walls
Custom vinyl exterior graphics with two available color schemes: Emerald Coast and Spice Island
Molded, high gloss, full fiberglass caps with integrated front and rear bumpers
Soft touch interior ceiling material
Insulated fiberglass exterior storage compartment doors with integrated paddle latches and gas struts
Electric slide-out rooms
Aluminum rear ladder
Convenience D-Ring mounts in basement storage compartments
Automotive undercoating as required
Steel insulated front bulkhead

COCKPIT FEATURES

JVC® AM/FM stereo with CD player and four speakers
Driver and passenger gooseneck reading lights
Custom dash in dark gray matte grid finish with full gauge package
Cockpit heater and air conditioner with dash controls
Convenience tray
Pantographic windshield wipers
Power steering
Electronic cruise control
18" tilt and telescopic steering wheel
Rear vision system with microphone
White power controlled, heated exterior mirrors
Hydraulic leveling jacks with dash mounted controls
Passenger workstation with 12V receptacle and 110V receptacle
Aviation style sun visors
Cup holders
Two 2-speed dash fans
Electric stepwell cover
Wraparound privacy curtain with easy-reach wand
Pre-wired for your CB radio

APPLIANCES & ACCESSORIES

RCA® 27" TV with front A/V jacks in cockpit
RCA® Hi-Fi VCR in cockpit
Multi-speaker TV sound
RCA® 19" TV with front A/V jacks in bedroom
8 cu. ft. double door refrigerator with ice maker and pantry
High output three burner cook top with flush mount Corian® range cover
GE® SpaceSaver® convection microwave oven with carousel, built-in light and fan
Systems monitor panel
Cable TV hook-up and multiple telephone jacks
Winegard® TV antenna
Winegard® video control box allows for a third TV

FURNITURE

Kustom Fit® fabric driver recliner seat with swivel base
Kustom Fit® fabric passenger recliner seat with swivel base
Kustom Fit® 74" Wonder-Bed® sleeper sofa with slide-in armrests
Freestanding Kustom Fit® fabric swivel Euro-recliner chair

INTERIORS

Throughout Coach

Maple paneling and doors
Solid wood, raised panel cabinet doors in living area, flat panel doors on base cabinets in dressing and bedroom
Deluxe overhead storage doors with telescopic hardware; positive catches on all other doors
Drawers with ball bearing roller guide design

Cockpit Area

Floormats

Living Area

Patterned plush carpet with deluxe pad
Pleated day/night shades
Valances and lambrequins
48" deep booth dinette with slide-out storage drawers

Kitchen Area

Corian® kitchen countertop
Swanstone® under-mount kitchen sink
Slide-out pantry
Wastebasket
Silverware organizer
Ceramic tile floor
Venetian blind and valance

Bath Area

Ceramic tile floor
Pleated day/night shades
Flat panel doors
Insulated skylight in shower
Towel bars
Two towel rings
Medicine cabinet
Window, valance and blinds in the private toilet room
Residential style door for private toilet room
Stylish, decorative wall border

Bedroom Area

Patterned plush carpet with deluxe pad
Pleated day/night shades
Valances and lambrequins
Flat panel doors
"Sandpiper Deluxe" residential-style pillow top mattress (60"x80")
Queen bed slide-out
Stylish, designer coordinate bedspread, pillows and shams
Radius padded headboard
Laminate top nightstands with woodgrain edge
Cedar lining in wardrobe

Wall dresser with drawers and laundry hamper
Residential style closet rods
Hardwood louvered washer/dryer doors below the TV
Second lavvy sink (T350)

ELECTRICAL SYSTEMS & LIGHTS

50 Amp 120V distribution panel and cord
50 Amp shore power cord
21 watt solar panel
Onan® 7.5 kW LPG generator
Two 6V deep cycle house batteries
Slide-out battery tray
Two 1900 CCA 12V maintenance-free chassis batteries
Easily accessible battery disconnect switch
Porch light
Patio receptacle in sidewall
Three water pump switches (kitchen, bath and service station)
Decorative overhead dining light
Decorative overhead light in bedroom
Cosmetic light in bathroom
Stylish, designer decorative lights in living area
Courtesy light at entry-door switch panel
Fluorescent ceiling lights

PLUMBING & LPG SYSTEMS

Coach Exterior

Heated and insulated holding and water tanks
Manual dump valves
Pressurized water fill with regulator
Demand water pump
Water heater by-pass valve
Winterization antifreeze inlet to pump
Holding tank rinsing system (waste tank only)
Outside shower

Kitchen Area

Water filter/faucet in kitchen
10 gallon gas/electric water heater
Price Pfister® single lever faucet with gooseneck sprayer

Bedroom/Bathroom Area

Low-profile porcelain toilet with sprayer (T350, T370)
Designer, "Leaf Patterned" glass shower enclosure
One piece fiberglass shower with seat (T350)
One piece fiberglass tub and shower, lowered for easy entry and exit (T370)
Single lever brass faucets with crystal handle for lavys
Pre-plumbed for washer/dryer

SAFETY FEATURES

Fire extinguisher
Deadbolt lock on entrance door
12V GFI protected circuits (kitchen, bath and exterior)
Smoke, carbon monoxide (CO) and LPG detectors
Driver and passenger three point lap and shoulder seatbelts

Egress window
Deluxe acrylic exterior assist handle

WINDOWS, DOORS & AWNINGS

Insulated and tinted dual pane windows
Power double entrance step with light and anti-skid coating
Tinted skylight in bathroom
Slide-out tapper awnings on living room, galley and bedroom slide
Electric patio awning in the stylish Sand Shadow scheme with matching white hardware for a bright, vibrant appearance

VENTILATION

Dual 13,500 BTU Duo-Therm® low profile Penguin® air conditioners with in-ceiling ducting
Dual 20,000 BTU furnaces
12V fan in bathroom
12V Fan-Tastic® Vent with wall thermostat and rain sensor in living area

OPTIONAL FEATURES

Coach Exterior

Dual roof mounted chrome trumpet air horns
Manual front entry door awning*
Manual living room and bedroom window awning package

Electrical Systems

2,000 watt inverter, two 6V batteries, 40 watt solar panel package (replaces standard 21 watt solar panel)

Throughout Coach

Walnut paneling and doors

Furniture

Kustom Fit® Ultra-Leather™ 6-way power driver recliner seat with swivel base and Kustom Fit® Ultra-Leather™ passenger recliner seat with swivel base
Kustom Fit® 74" Ultra-Leather™ Wonder-Bed® sleeper sofa with slide-in armrests
Freestanding Kustom Fit® Ultra-Leather™ swivel Euro-Recliner chair

Entertainment Systems

Home theater package: Includes an RCA® DVD digital receiver; a subwoofer/speaker system; 20" TV with a swivel base located in an exterior compartment on a full-extension slide tray with a fixed stereo unit with two speakers mounted by the exterior TV
Kingdome® automatic stationary satellite dish with RCA® satellite receiver
Kingdome® automatic stationary satellite dish without satellite receiver
RCA® satellite receiver
JVC® multi-disc CD changer

Living Area

Freestanding dinette table with two low-back wooden chairs and two wooden folding chairs

Kitchen Area

Corian® countertop extension
21" high output three burner range and oven
12 cu. ft. side-by-side refrigerator with ice maker (replaces the slide-out pantry)

Bedroom/Bathroom Area

Combination washer/dryer

WEIGHTS	T350	T370
Freightliner Chassis		
Gross Vehicle Weight Rating	27,910 lbs.	27,910 lbs.
Gross Combined Weight Rating	32,910 lbs.	32,910 lbs.
Front Gross Axle Weight Rating	10,410 lbs.	10,410 lbs.
Rear Gross Axle Weight Rating	17,500 lbs.	17,500 lbs.
Unloaded Vehicle Weight	23,480 lbs.	TBD
Maximum Carrying Capacity	4,430 lbs.	TBD
Cargo Carrying Capacity (CCC)	2,694 lbs.	TBD
Spartan GTI Chassis		
Gross Vehicle Weight Rating	N/A	TBD
Gross Combined Weight Rating	N/A	TBD
Front Gross Axle Weight Rating	N/A	TBD
Rear Gross Axle Weight Rating	N/A	TBD
Unloaded Vehicle Weight	N/A	TBD
Maximum Carrying Capacity	N/A	TBD
Cargo Carrying Capacity (CCC)	N/A	TBD
MEASUREMENTS		
Wheelbase	208"	228"
Overall Length	35' 5"	37' 1"
Exterior Height (Freightliner Chassis)	12' 1"	12' 1"
Exterior Height (Spartan Chassis)	N/A	TBD
Exterior Height (with Satellite)	12' 5"	12' 5"
Interior Height	79 1/2"	79 1/2"
Interior Width	98"	98"
Exterior Width	102"	102"
TANK CAPACITIES		
Water Heater	10 gal.	10 gal.
Gray Tank	40 gal.	40 gal.
Black Tank	45 gal.	45 gal.
Fresh Water Tank(s)	95 gal.	95 gal.
LP-Gas Tank (Volume W.C.)	69 gal.	69 gal.

*Not available on CSA units