



COMMANDER

2002



*Every mile is a memory,
Every day a new adventure*



OPEN MIND, OPEN ROAD

EMBRACE YOUR INDEPENDENCE.

CROSS THE COUNTRY OR NESTLE IN

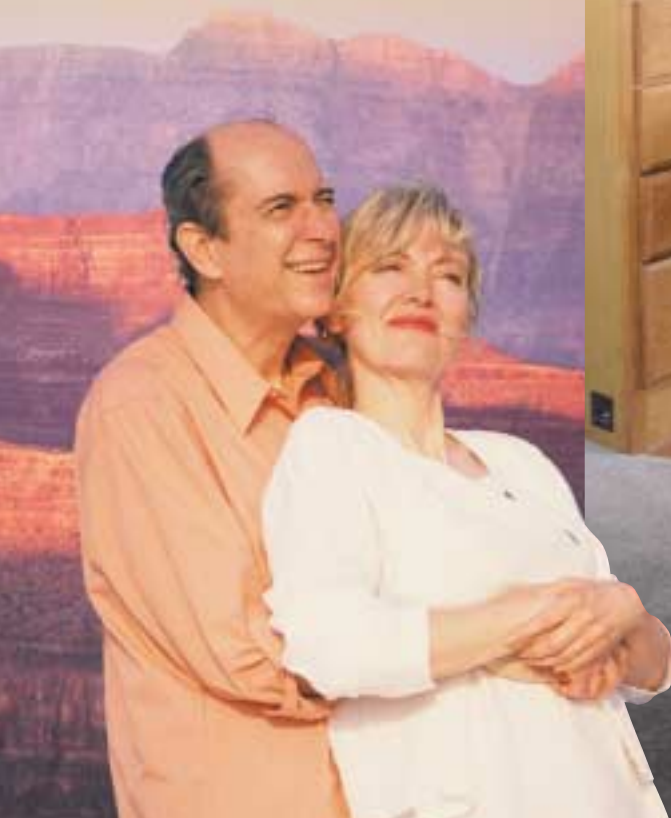
YOUR FAVORITE LOCALE. THERE'S

NO TIME LIKE THE PRESENT TO

START LIVING YOUR DREAMS.



A3509FB shown with Laguna Mist Decor





Exterior storage is lit and easily accessible with gas-powered struts.



Space is even more plentiful with the bedroom slide-out.



Ease back in the optional Versa-Lounger which also converts to a bed.

Plush and attractive, the 2002 Commander is much more than an RV, it's your home base for the leisure time that you richly deserve. For absolute comfort in unbeatable style, this is the vehicle, from hardwood flooring to the elegant interior design.

Completely equipped to ensure a seamless experience, the Commander is an excellent example of why the RV lifestyle is so appealing. The galley is full featured and well organized, the recreational area has extra

comfy chairs to enjoy the 20-inch remote TV or in dash CD player. The 2002 Commander is powered by a Ford 6.8L V10 engine for power on demand.

Not only are there numerous possible floor plans ranging from 29 to 35 feet, you can further customize your unit, depending on your needs, with optional water filtration, a washer/dryer on some models, or central vacuum.



The 2002 Commander features a flush floor slide out.



The automotive style dash keeps the driving comfortable and familiar.

PRESENTATION IS EVERYTHING

ALONG WITH YOUR CHOICE OF FLOOR PLANS AND A HOST OF OPTIONS, FURTHER CUSTOMIZE YOUR MOTORHOME WITH ONE OF THREE DISTINCT INTERIOR DESIGN SCHEMES. SELECTED BY A GROUP OF PROFESSIONALS, THE COMBINATIONS SKILLFULLY COORDINATE UPHOLSTERY, CARPETING, WINDOW TREATMENTS AND EXTERIOR GRAPHICS WITH PAINT.



FERN GROVE



LAGUNA MIST



OYSTER



MORNING MIST



AUTUMNWOOD

Colors may not be exactly as shown due to the printing process.
Please see your dealer for specific colors.

STANDARDS AND OPTIONS

S = Standard O = Option 🍁 New for 2002

	A2901	A3201	A3202F	A3402	A3503F	A3505G	A3509FB
VEHICULAR							
Airbag Assist Suspension - Rear	S	S	S	S	S	S	S
Airbag Assist Suspension - Front	O	O	O	O	O	O	O
Alternator 130 Amp	S	S	S	S	S	S	S
Automotive Undercoating	S	S	S	S	S	S	S
Battery Boost Switch (Coach to Chassis Batteries)	S	S	S	S	S	S	S
Battery Selector Switch for Radio	S	S	S	S	S	S	S
Block Heater	S	S	S	S	S	S	S
Chassis - Ford 6.8L V-10 Triton 18,000 lb. GVW	S	-	-	-	-	-	-
Chassis - Ford 6.8L V-10 Triton 20,500 lb. GVW	-	S	S	S	-	-	-
Chassis - Ford 6.8L V-10 Triton 22,000 lb. GVW 🍁	-	-	-	-	S	S	S
Chassis Air Conditioner	S	S	S	S	S	S	S
Cruise Control	S	S	S	S	S	S	S
Dash Mounted Directional Compass with Exterior							
Driver Door c/w Power Window	S	S	S	S	S	S	S
Driver/Passenger Floor Mats	S	S	S	S	S	S	S
Flush Floor HWH Slide Out System 🍁	-	-	S	-	S	-	S
Halogen Headlamps	S	S	S	S	S	S	S
Heated Remote Mirrors	S	S	S	S	S	S	S
High Mount Stoplight - LED Long Life	S	S	S	S	S	S	S
HWH Hydraulic Leveling Jacks	O	O	S	O	S	S	S
HWH Slide Out System	-	-	-	-	-	S	-
Integrated Fiberglass Bumper	S	S	S	S	S	S	S
Radial Tires 245/70R 19.5 - LRF 12 Ply	S	S	S	S	S	S	S
Rust Protection	O	O	O	O	O	O	O
Spare Tire	S	S	S	S	S	S	S
Temperature Readout 🍁	O	O	O	O	O	O	O
Three Point Cockpit Seatbelts	S	S	S	S	S	S	S
Tilt Steering Wheel	S	S	S	S	S	S	S
Trailer Hitch Receiver c/w Wiring and 7 Pole Plug - Class III	S	S	S	S	S	S	S
Transmission Cooler (Ford Supplied)	S	S	S	S	S	S	S
Wet Arm Windshield Wipers c/w Intermittent Function	S	S	S	S	S	S	S
Wheel Simulators c/w Tire Valve Extensions	S	S	S	S	S	S	S

CONSTRUCTION							
Aluminum Baggage Doors c/w Gas Struts and Slam Latch	S	S	S	S	S	S	S
Domed EPDM Rubber Roof	S	S	S	S	S	S	S
Gelcoat Fiberglass Front & Rear Masks	S	S	S	S	S	S	S
Lined and Lighted Baggage Compartments	S	S	S	S	S	S	S
Rain Gutters c/w Down Spouts 🍁	S	S	S	S	S	S	S
Steel Cab Floor, Firewall and Dash Structure	S	S	S	S	S	S	S
Thermal Pane Windows	S	S	S	S	S	S	S
Vacuum Bonded Aluminum Frame Insulated Sidewall and Roof Construction	S	S	S	S	S	S	S
Vacuum Bonded Gelcoat Fiberglass Sidewalls	S	S	S	S	S	S	S
Vacuum Bonded Steel Frame Insulated Floor Construction	S	S	S	S	S	S	S


EXTERIOR							
Concealed Locking Fuel Fill Access	S	S	S	S	S	S	S
Dead Bolt Door Lock	S	S	S	S	S	S	S
Electric Retractable Entry Step	S	S	S	S	S	S	S
Exterior Ladder c/w Detachable Lower Section	O	O	O	O	O	O	O

Exterior Shower	S	S	S	S	S	S	S
Monogrammed Exterior Entry Handle	S	S	S	S	S	S	S
Patio Light	S	S	S	S	S	S	S
Rear Mounted Docking Lights	O	O	O	O	O	O	O
Screened Entry Door with Stud Shield	S	S	S	S	S	S	S
Winter Front Package	O	O	O	O	O	O	O

INTERIOR							
Automotive "Soft Touch" Headliner	S	S	S	S	S	S	S
Bedroom Slide Out c/w 20" Color A/C TV	-	-	O	-	O	O	S
Cockpit Ventilating Fans	O	O	O	O	O	O	O
Courtesy Floor Lamps	S	S	S	S	S	S	S
Day/Night Pleated Shades c/w Bedroom Blackout	S	S	S	S	S	S	S
Decorative Bedspread with Throw Pillows	S	S	S	S	S	S	S
Decorative Mirrors	S	S	S	S	S	S	S
Domed Interior Ceiling	S	S	S	S	S	S	S
Drivers & Passengers Side Roller Blinds	O	O	O	O	O	O	O
Driver's Side Power Sun Visor 🍁	O	O	O	O	O	O	O
Dual Roller Glide Drawers c/w Travel Locks	S	S	S	S	S	S	S
Easy Underbed Storage c/w Gas Struts	S	S	S	S	S	S	S
Fluorescent Lighting in Aisle (except Bathroom)	O	O	O	O	O	O	O
Halogen Lighting under the Overhead Cabinets above the Couch and above the Bed	O	O	O	O	O	O	O
Insulated Vent Covers	O	O	O	O	O	O	O
Oak Raised Panel Cabinet Doors	S	S	S	S	S	S	S
Passenger's Computer Tray	O	O	O	O	O	O	O
Skylight - Shower Compartment	S	S	S	S	S	S	S
Skylight with Blind in Living Area	O	O	O	O	O	O	O
Slide Out Drawer Option in Washer /Dryer Cabinet (N/A with Washer/Dryer Option)	-	-	-	-	O	O	O
Solid Surface Counter in Galley and Booth Dinette or Freestanding Table (N/A with Wall Mount Table option)	O	O	O	O	O	O	O
Southco Snap Latches on Galley, Lavatory Overhead Cabinets and Large Wardrobe Doors.	S	S	S	S	S	S	S
Thermostatically Controlled Fan in Bedroom	S	S	S	S	S	S	S
Upgrade to Thermostatically Controlled Fan in Bathroom (included with Dual Roof Air Option)	O	O	O	O	O	O	O
Thermostatically Controlled Fan in Living Area	O	O	O	O	O	O	O
Wall to Wall Carpeting	S	S	S	S	S	S	S

FURNITURE							
Booth Dinette with 5" Wrapped Laminated Cushions	S	S	S	S	S	S	S
Cloth Captains Chair in lieu of Cocktail Chair	O	O	O	O	O	O	O
Electric Driver Seat	O	O	O	O	O	O	O
Flexsteel Versaflex Lounger 🍁	-	-	O	-	O	-	O
Hide-A-Bed	-	-	S	-	S	-	S
Magic Bed Option 🍁	-	-	-	-	-	O	-
Mattress (Residential Quality Queen Bed)	S	S	S	S	S	S	S
Mattress Upgrade	O	O	O	O	O	O	O
Oak Table & Chairs in Lieu of Booth Dinette - optional on all models (F - Freestanding, W - Wall Mount)	W	W	F	W	F	W	F
Refreshment Centre	O	O	O	O	O	O	O

STANDARDS AND OPTIONS

S = Standard O = Option  New for 2002

	A2901	A3201	A3202F	A3402	A3503F	A3505G	A3509FB
Slide Out Drawers under Booth Dinette 	-	S	S	S	S	S	S
Sofa in lieu of Cocktail Chairs	O	-	-	-	-	-	-
Swivel Cocktail Chair	S	S	S	S	S	S	S
Swivel Driver & Passenger Captain Chairs c/w Recline (Cloth)	S	S	S	S	S	S	S
Twin Beds (N/A with Bedroom Slide Option)	O	O	O	O	O	O	-
Ultra Leather Captain Chair in Lieu of Cocktail Chair	O	O	O	O	O	O	O
Ultra Leather Cocktail Chair in Lieu of Cloth	O	O	O	O	O	O	O
Ultra Leather Driver & Passenger Captain Chairs	O	O	O	O	O	O	O




GALLEY

Coffee Maker	O	O	O	O	O	O	O
Dometic Microwave	S	S	-	S	-	-	-
Gas Oven	O	O	O	O	O	O	O
Hardwood Flooring in Galley	S	S	S	S	S	S	S
Laminate Countertop c/w Solid Surface Edging	S	S	S	S	S	S	S
Micro/Convection Oven (OTR) c/w 110V Range Hood	-	-	S	-	S	S	S
Raised Oak Fridge Inserts	O	O	O	O	O	O	O
Range Hood c/w Light (on Non Slide Models)	S	S	-	S	-	-	-
Recessed Acrylic Sink	S	S	S	S	S	S	S
Recessed Bi-fold Range Cover	S	S	S	S	S	S	S
Recessed Cooktop c/w High Output Burner	S	S	S	S	S	S	S
Two Door Fridge, LP/Electric (10 Cu. ft.)	O	O	O	O	O	O	O
Two Door Fridge, LP/Electric (8 cu. ft.)	S	S	S	S	S	S	S




LAVATORY

Marine Toilet	S	S	S	S	S	S	S
Neo-Angle Shower	-	-	S	S	-	-	-
Power Vent Fan in Bathroom	S	S	S	S	S	S	S
Shower/Tub Door (F-Folding, S-Sliding)	F	F	F	S	S	S	S
Skylight in Shower	S	S	S	S	S	S	S

ENTERTAINMENT

A/C 20" Color Stereo TV c/w Remote in Front Overhead Cabinet 	S	S	S	S	S	S	S
A/C Video Cassette Recorder	O	O	O	O	O	O	O
AC/DC Bedroom TV c/w Remote (N/A with Bedroom Slide Out Option)	O	O	O	O	O	O	-
AM/FM Cassette In Dash Stereo	O	O	O	O	O	O	O
AM/FM Cassette with 8 Stack CD Changer	O	O	O	O	O	O	O
AM/FM CD In-Dash Stereo	S	S	S	S	S	S	S
CB Antenna	O	O	O	O	O	O	O
Exterior AM/FM CD Stereo	O	O	O	O	O	O	O
Exterior Telephone & Cable TV Hookup	S	S	S	S	S	S	S
Halogen Automotive Driving Lights 	S	S	S	S	S	S	S
Prewire for AC/DC Bedroom TV	S	S	S	S	S	S	S
Radio Monoplex System	S	S	S	S	S	S	S
Satellite Dish Prewire (with 12V and 110V Power) 	O	O	O	O	O	O	O
TV Antenna c/w Booster	S	S	S	S	S	S	S
Video System Master Control	S	S	S	S	S	S	S

SYSTEMS

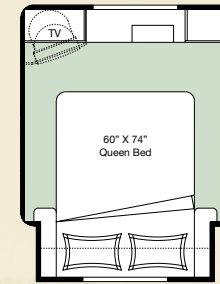
	A2901	A3201	A3202F	A3402	A3503F	A3505G	A3509FB
120/12 Volt Converter c/w Charger & Changeover Relay	S	S	S	S	S	S	S
1500 Watt Inverter c/w 75 Amp Charger (Requires Energy Management System)	-	-	O	O	O	O	O
2 - 25,000 BTU Furnace c/w Electronic Ignition	-	-	S	-	S	S	S
3 Way Water Pump Switch	S	S	S	S	S	S	S
30 Amp Electrical Service	S	S	S	S	S	S	S
35,000 BTU Furnace c/w Electronic Ignition	S	S	-	S	-	-	-
Alarm System c/w Motion Detector	O	O	O	O	O	O	O
Bi-Directional Isolator Relay Delay (BIRD) Battery Charging	S	S	S	S	S	S	S
Black Tank Flush System	S	S	S	S	S	S	S
Central Vacuum with Outlet in Baggage Compartment 	O	O	O	O	O	O	O
Dry Chemical Fire Extinguisher	S	S	S	S	S	S	S
Dual Ducted Air Conditioning (2) 13,500 BTU c/w Energy Management System	-	-	O	O	O	O	O
Dual H.D. RV 27 Deep Cycle Auxiliary Batteries (12V)	S	S	S	S	S	S	S
Ducted Roof Air Conditioner - 13,500 BTU	S	S	S	S	S	S	S
Ducted Roof Air Conditioner - 15,000 BTU	-	-	O	O	O	O	O
Easy Access Propane Tank	S	S	S	S	S	S	S
Electronic Battery Disconnect (Coach Batteries)	S	S	S	S	S	S	S
Electronic Ignition LP/Electric/Motoraid Water Heater	S	S	S	S	S	S	S
Electronic Smoke, LP and CO Detectors	S	S	S	S	S	S	S
Enclosed and Insulated, Dual Heated Fresh Water & Generator Ready Package	S	S	S	S	S	S	S
Energy Management System	-	-	O	O	O	O	O
Generator 5.5 KW Onan Marquis Gold	O	O	O	O	O	O	O
Pre-wire Rearview Camera	S	S	S	S	S	S	S
Rear Auxiliary Automotive Heater with Electric Water Valve	S	S	S	S	S	S	S
Rearview Camera/Monitor - Color - Mounted in Dash 	O	O	O	O	O	O	O
Roughed in for Washer/Dryer	-	-	-	-	S	S	S
Solar Panel Prewire	O	O	O	O	O	O	O
Systems Monitor Panel	S	S	S	S	S	S	S
Waste Holding Tanks	S	S	S	S	S	S	S
Water Heater By-Pass	S	S	S	S	S	S	S
Water Purifier	O	O	O	O	O	O	O
Water Tank Fill/Bleach Fill System 	S	S	S	S	S	S	S
Winterization System c/w Antifreeze Pickup	S	S	S	S	S	S	S
Washer/Dryer (vented)	-	-	-	-	O	O	O
Factory P.D.I.	O	O	O	O	O	O	O

Product improvement is a continuing process at Triple E Recreational Vehicles. Thus we reserve the right to change specifications on any or all products without prior notice; errors and omissions excepted. Triple E Recreational Vehicles is under no obligation to undertake modification to units manufactured prior to changes on specifications.

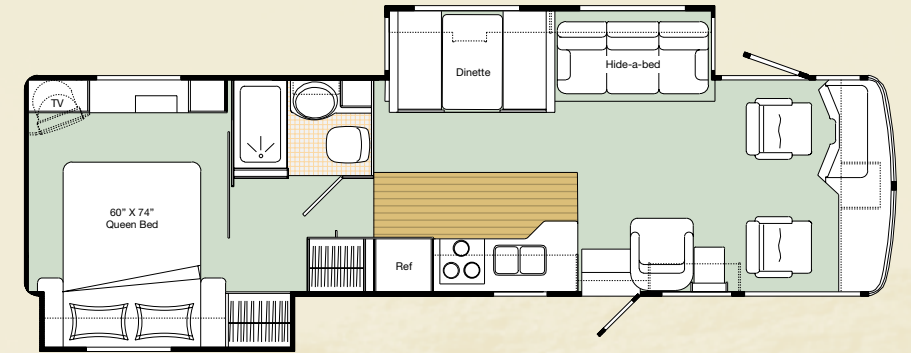
SPECIFICATIONS

	A2901	A3201	A3202F	A3402	A3503F	A3505G	A3509FB
GVWR - lbs (kg)	18000(8160)	20500(9295)	20500(9295)	20500(9295)	22000(10000)	22000(10000)	22000(10000)
UVW - lbs (kg)	14964(6665)	15351(6963)	TBA	15775(7155)	17275(7852)	17022(7737)	17853(8115)
NCC - lbs (kg)	3306(1500)	5149(2336)	TBA	4725(2143)	4725(2148)	4978(2263)	4147(1885)
Wheelbase - inches (mm)	190(4826)	208(5283)	208(5283)	228(5791)	228(5791)	228(5791)	228(5791)
Length - feet (mm)	29'10"(9098)	32'7"(9932)	32'7"(9932)	34'3"(10439)	34'3"(10439)	34'3"(10439)	34'3"(10439)
Width - feet (mm)	8'4"(2534)	8'4"(2534)	8'4"(2534)	8'4"(2534)	8'4"(2534)	8'4"(2534)	8'4"(2534)
Height Incl. A/C - feet (mm)	11'9"(3581)	11'9"(3581)	11'9"(3581)	11'9"(3581)	11'9"(3581)	11'9"(3581)	11'9"(3581)
* Water Tank Cap. - gal (l)	84(319)	80(305)	84(319)	80(305)	84(319)	84(319)	84(319)
Holding Tank Cap. - gal (l)	78(295)	78(295)	78(295)	78(295)	78(295)	78(295)	78(295)
Fuel Capacity - gal (l)	75(284)	75(284)	75(284)	75(284)	75(284)	75(284)	75(284)
Propane Capacity - gal (l)	25.3(95.8)	25.3(95.8)	25.3(95.8)	25.3(95.8)	25.3(95.8)	25.3(95.8)	25.3(95.8)

* - Includes 6 gallon Water Heater (All capacities in US gallons)

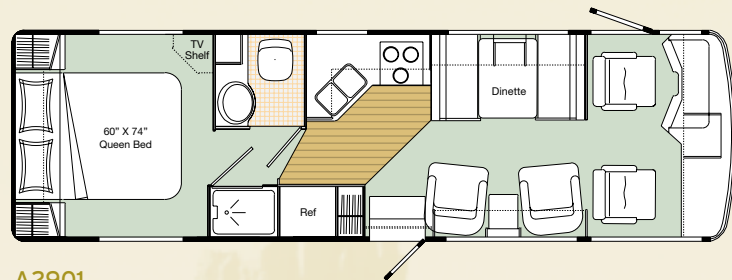


Optional Bedroom Slide-out

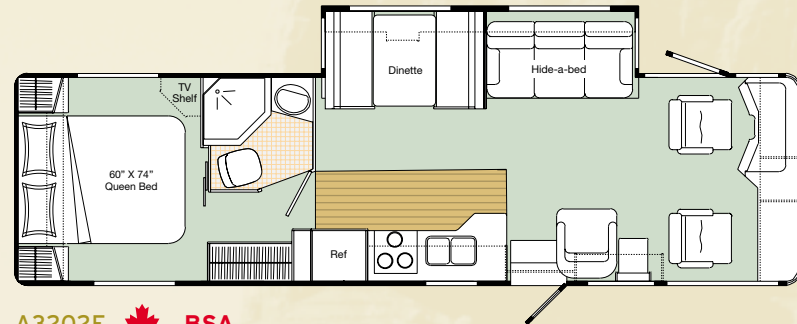


A3509FB

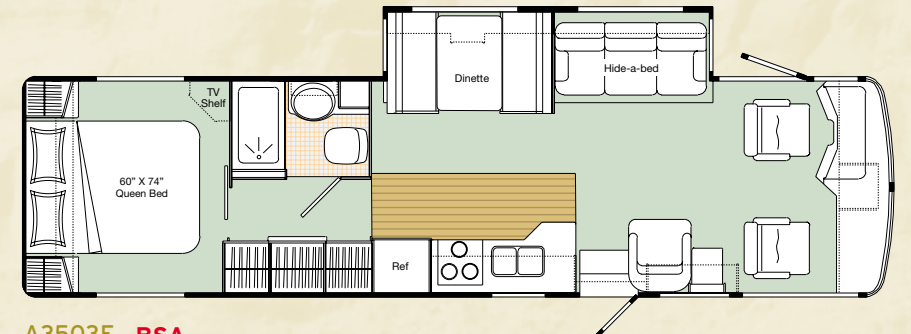
FLOORPLANS



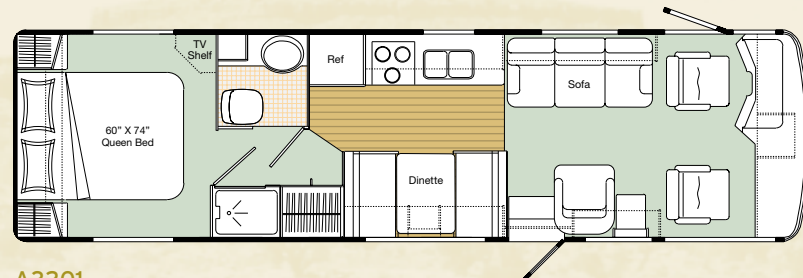
A2901



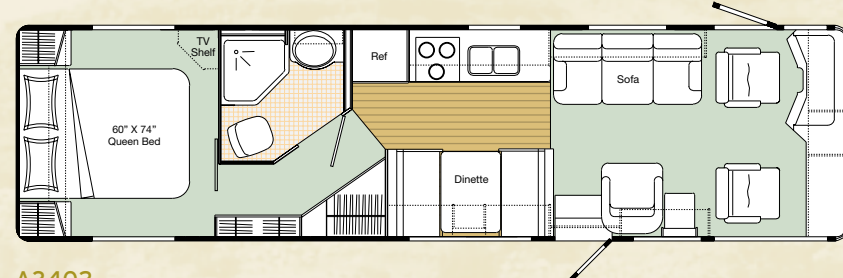
A3202F BSA



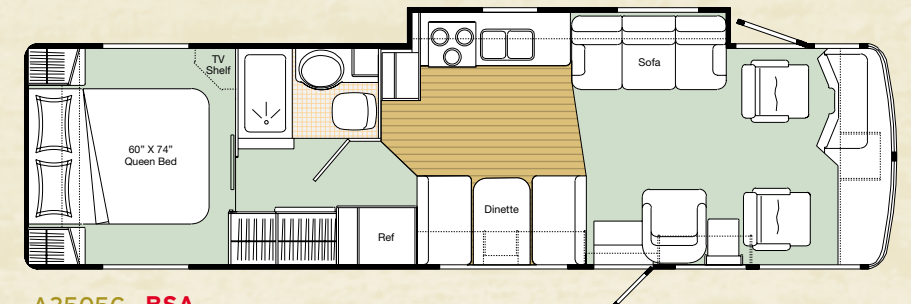
A3503F BSA



A3201



A3402



A3505G BSA

GVWR

GROSS VEHICLE WEIGHT RATING means the maximum permissible weight of this motorhome. The GVWR is equal to or greater than the sum of the unloaded vehicle weight (UVW) plus the net carrying capacity (NCC).

UVW

UNLOADED VEHICLE WEIGHT means the weight of the motorhome as built at the factory with full fuel, engine oil, and coolants. The UVW does not include cargo, fresh water, LP gas, occupants, factory or dealer installed accessories.

NCC

NET CARRYING CAPACITY means the maximum weight of all occupants, including the driver, personal belongings, food, fresh water, LP gas, tools, tongue weight of towed vehicle, factory and dealer installed accessories, etc., that can be carried by this motorhome. (NCC is equal to or less than GVWR minus UVW.)



New for 2002

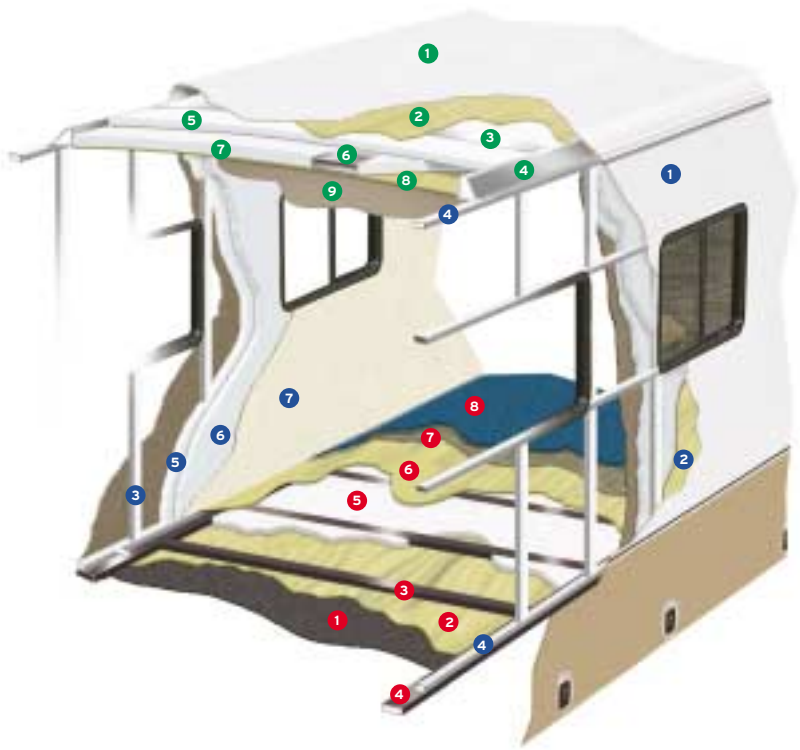
BSA - Bedroom Slide Available

NOTE: Please see your dealer for weights of factory installed options.



CONSTRUCTION

The major considerations in building a top quality motorhome are long lasting beauty coupled with the ability to stand up to any weather conditions. The coach is an aluminum and steel framed structure with vacuum bonded gelcoat fiberglass side walls and a domed roof finished with a seamless EPDM membrane.



Floor (Exterior to Interior)

1. One Piece Woven Poly Propylene Underbelly
2. 3/8" Plywood
3. Tubular Steel Framing (Welded)
4. Styrofoam Filled Wall Support Plates
5. 1" Block Styrofoam Insulation
6. 1/2" Plywood
7. Carpet Underlay
8. Carpeting (Floor covering)

Sidewalls (Exterior to Interior)

1. Seamless Fiberglass Exterior
2. Luaun Structural Backer
3. Aluminium Framing (Welded)
4. Styrofoam Filled Floor and Roof Plate
5. 1" Block Styrofoam Insulation
6. 1/2" Styrofoam Thermal Break Insulation
7. Interior Decorative Luaun Wall Panels

Roof (Exterior to Interior)

1. One Piece EPDM Roofing
2. Luaun Backer
3. Aluminium Roof Truss
4. Styrofoam Filled Roof Truss Supports
5. 1 1/2" Block Styrofoam Insulation
6. Enclosed/Insulated Climate Control Ducting
7. 2" Block Styrofoam Thermal Break Insulation
8. 3/8" Plywood
9. One Piece Headliner

TRIPLE E QUALITY

A Triple E Commander Motorhome is a combination of first-class materials and quality controlled construction.

Built with a solid foundation, integrity is never compromised – inside and out.

Exteriors are virtually maintenance free and abrasion resistant. The domed roof allows for quick water run-off and an EPDM membrane both serves to protect against leaks and contributes to energy-efficiency.

Cabinetry is constructed with screws rather than staples to ensure structural integrity and durability. Both strong and moisture repellent, the solid oak doors are a front to ample storage space.

Designer interior decors are a mixture of style and functionality – with quality fabrics developed to handle years of wear while meeting or exceeding flame retardant standards.

All Triple E products are built to CSA (Canadian Standards Association) or RVIA (Recreational Vehicle Industry Association) Standards. Triple E was one of the first RV manufacturers to obtain the ISO 9002 certification – your assurance of the careful construction and high quality materials that are part and parcel of every Triple E Recreational Vehicle.



MAKE SURE YOU VISIT OUR WEBSITE AT www.tripleerv.com

Triple E is proud to offer a

2 YEAR LIMITED WARRANTY

on structure as well as most major components.

Please see your dealer for further details.



This combination of labels assures the purchaser that the manufacturer has met or surpassed CSA-CRVA-RVIA standards covering electrical services, gas services, plumbing services, and vehicular safety.

Commander motorhomes exceed 96 inches in width. In some states 96 inches is the maximum width of vehicles travelling some or all state roads. It is the responsibility of the owner to be familiar with the road usage laws of the states in which you travel.

COACH NET

Triple E is a proud partner of Coach Net, an extensive support program that provides complete and fully paid roadside assistance, emergency road service, and special warranty support benefits that follow you throughout Canada and the US. Service is free for the first year of ownership and is available at a nominal fee for subsequent years.

Coach Net's 24-hour Customer Care includes:

- Emergency roadside assistance including tow vehicle
- Toll free technician hotline for operation and service support
- Toll free nationwide service appointment assistance
- Free custom trip routing and color maps
- Warranty service at over 6,800 locations throughout North America
- Benefits such as free jump starts, tire changes, fuel delivery, and lock out service

Brochure pictures may be shown with optional equipment.



P.O. Box 1230, Winkler, MB
Canada R6W 4C4
Tel: (204) 325-4361
Fax: (204) 325-5241
www.tripleerv.com

Experience the Difference