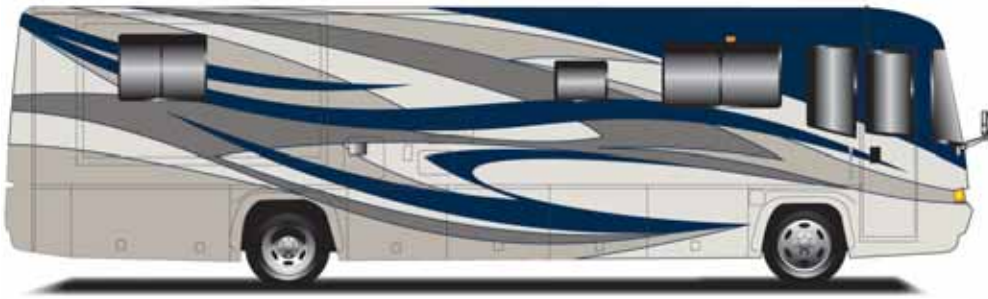


# TUSCANY

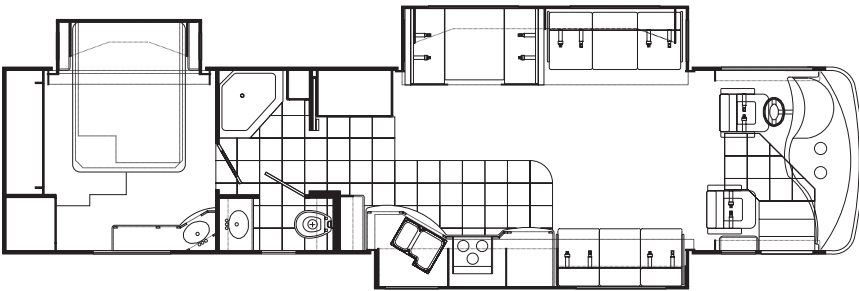
## 2005 MODELS



Cobalt Suede Full-Body Paint Package



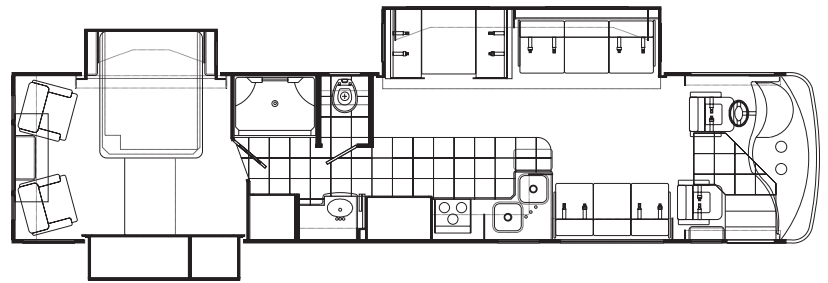
Almond Mocha Full-Body Paint Package



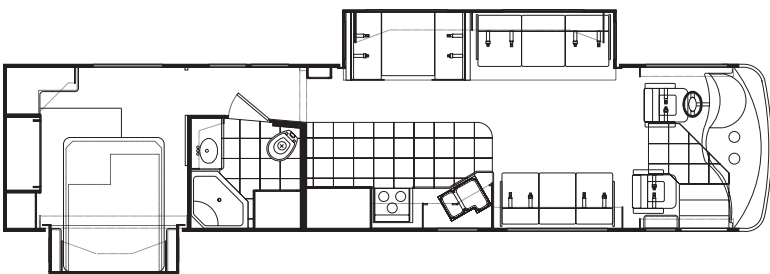
2005 Tuscany 3974 Floor Plan



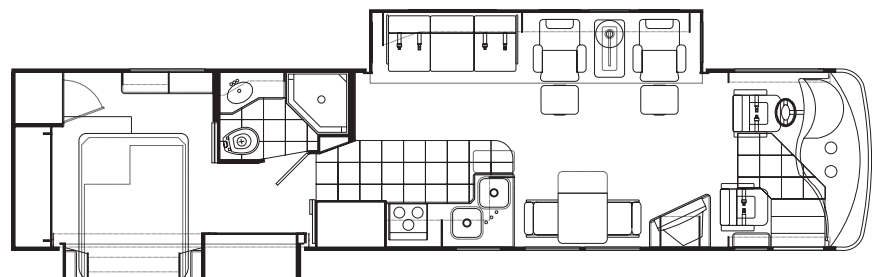
Emerald Toast Full-Body Paint Package



2005 Tuscany 4075 Floor Plan



2005 Tuscany 3976 Floor Plan



2005 Tuscany 4077 Floor Plan



*Value by design is back!*

# 2005 TUSCANY SPECIFICATIONS

<b>Tuscany Bathroom</b>	<b>3974</b>	<b>3976</b>	<b>4075</b>	<b>4077</b>
Full-height fiberglass tub or shower with door	S	S	S	S
Skylight in shower	S	S	S	S
Obscure glass window in private stool area	S	N/A	S	N/A
Power vent	S	S	S	S
Foot-flush porcelain toilet with sprayer	S	S	S	S
Wallpaper border	S	S	S	S
Ceramic tile flooring	S	S	S	S

<b>Tuscany Bedroom</b>	<b>3974</b>	<b>3976</b>	<b>4075</b>	<b>4077</b>
Pillowtop mattress	S	S	S	S
Bedsprad with throw pillows	S	S	S	S
19" or 20" color TV	S	S	S	S
Lambrequin window treatments	S	S	S	S
Day/night shades	S	S	S	S
Pin-up lights	S	S	S	S
AM/FM/CD player	0	0	0	0

<b>Tuscany Chassis</b>	<b>3974</b>	<b>3976</b>	<b>4075</b>	<b>4077</b>
Raised-rail chassis	S	S	S	S
330-hp Cummins® engine, Workhorse chassis	N/A	0	0	N/A
350-hp Caterpillar® engine	S	S	S	S
In-block engine heater	S	S	S	S
Leece Neville® 160-amp, 12-volt alternator	S	S	S	S
Allison® MH-3000 automatic transmission – 6 speed	S	S	S	S
Exhaust brake	S	S	S	S
Full air brakes with automatic slack adjusters (front and rear)	S	S	S	S
Antilock brakes	S	S	S	S
Midland® Pure-Air Plus™ heated air dryer	S	S	S	S
Air-ride suspension system	S	S	S	S
Sachs® shock absorbers (front and rear)	S	S	S	S
22.5" radial tires	S	S	S	S
Leveling jacks	S	S	S	S
Front and rear mud flaps	S	S	S	S
Full-width stainless-steel stone guard with Damon stencil	S	S	S	S
Trailer hitch (10,000 lbs.)	S	S	S	S
Emergency start circuit	S	S	S	S
Under-hood light	S	S	S	S
Layer of neoprene vibration dampener	S	S	S	S
Dual fuel fills	S	S	S	S
Aluminum wheels (set of four)	S	S	S	S

<b>Tuscany Cockpit</b>	<b>3974</b>	<b>3976</b>	<b>4075</b>	<b>4077</b>
Molded ABS dash	S	S	S	S
Electronically controlled dash air conditioning	S	S	S	S
Premium AM/FM radio with in-dash CD	S	S	S	S
Multi-disc CD changer	0	0	0	0
Premium 4-speaker system with powered subwoofer	S	S	S	S
Electronic cruise control	S	S	S	S
Padded steering wheel	S	S	S	S
Douglas® tilt/telescoping steering column	S	S	S	S
Map lights	S	S	S	S
Dash fans	S	S	S	S
Air horns	S	S	S	S
Tinted wraparound windshield	S	S	S	S
Windshield privacy shade	S	S	S	S
Front-mounted power mirrors with heat	S	S	S	S
Chrome-plated front-mounted power mirrors with heat	0	0	0	0
Ceramic tile entry	S	S	S	S
Ultra-leather driver's seat with 6-way power	S	S	S	S
Ultra-leather passenger seat with 6-way power	S	S	S	S
Ultra-leather oversized passenger seat with 6-way power and electric foot rest	0	0	0	0
3-point wall-mounted seat belts	S	S	S	S
Storage cabinets above driver and passenger	S	S	S	S
Sun visors	S	S	S	S
Electric sun visors with two manual side shades	S	S	S	S
Backup monitor system with audio	S	S	S	S
Drink holders	S	S	S	S
Electric step cover	0	0	0	0

<b>Tuscany Exterior</b>	<b>3974</b>	<b>3976</b>	<b>4075</b>	<b>4077</b>
Full-body paint package with color-coordinated slideroom awnings	S	S	S	S
Color-coordinated patio awning with remote control	S	S	S	S

Color-coordinated window awnings	0	0	0	0
Fog lights	S	S	S	S
Wide-body design	S	S	S	S
Radius-corner domed TPO roof	S	S	S	S
Rear ladder	S	S	S	S
Aerodynamic front and rear fiberglass caps	S	S	S	S
Side-mounted awning over slideout	S	S	S	S
Upgraded gel-coated fiberglass sidewalls	S	S	S	S
Locking aluminum exterior storage doors	S	S	S	S
Custom-designed front entry door with screen	S	S	S	S
Black-framed, dual-pane windows	S	S	S	S
Two patio lights (one on each side)	S	S	S	S
Lighted storage compartments	S	S	S	S
Pass-through full basement storage	S	S	S	S
Easy-slide storage tray in basement	0	0	0	0
Exterior entertainment center with 20" TV	0	0	0	0
Gas pistons on exterior storage doors	S	S	S	S
Invisible bra	0	0	0	0

<b>Tuscany Kitchen</b>	<b>3974</b>	<b>3976</b>	<b>4075</b>	<b>4077</b>
Refrigerator: side-by-side	S	S	S	S
Refrigerator: side-by-side with icemaker	0	0	0	0
Refrigerator: raised-panel hardwood front (maple or cherry)	S	S	S	S
Cooktop	S	S	S	S
3-burner range and oven IPO cooktop	0	0	0	0
Solid-surface range cover	S	S	S	S
1.1 cubic-foot space-saver microwave/convection oven	S	S	S	S
Two solid-surface sink covers	S	S	S	S
Single-lever faucet with sprayer	S	S	S	S
Kitchen faucet water filter	S	S	S	S
Pantry	S	S	S	S
Solid-surface countertops	S	S	S	S
Solid wood cabinet doors throughout (maple or cherry)	S	S	S	S
Ceramic tile flooring	S	S	S	S
Booth dinette with wood-edged table	S	S	S	N/A
2 folding chairs (available with buffet)	0	0	0	0
Buffet with additional storage	0	0	0	N/A
Mini blind	S	S	S	S
Fantastic® power vent	S	S	S	S
Fantastic® power vent w/ rain sensor	0	0	0	0
Wallpaper border	S	S	S	S

<b>Tuscany Living Area</b>	<b>3974</b>	<b>3976</b>	<b>4075</b>	<b>4077</b>
Sofa bed (ultra-leather)(passenger's side)	S	S	S	N/A
Two Euro recliners IPO sofa bed (passenger's side)	N/A	N/A	0	N/A
Two Euro recliners with lounge table IPO sofa bed (passenger's side)	N/A	0	N/A	N/A
Two Euro recliners with coffee table and lamp IPO sofa bed (driver's side)	N/A	N/A	N/A	S

Hide-a-bed (décor fabric)(driver's side)	S	S	S	S
Hide-a-bed (ultra-leather)(driver's side)	0	0	0	0
Day/night shades	S	S	S	S
100% continuous-filament nylon carpeting with stain treatment and padding	S	S	S	S
24" color TV in cockpit overhead with full-function remote, antenna booster and jack	S	S	S	N/A
27" color, flat screen TV in entertainment center with full-function remote, antenna booster and jack	N/A	N/A	N/A	S
Home theater package (VCR, DVD/CD player and 5-channel Dolby® Pro-Logic receiver amplifier)	S	S	S	S
Soft-touch padded vinyl ceiling	S	S	S	S
Fluorescent lighting	S	S	S	S
Living room pin-up lights	S	S	S	S
Aisle lights	S	S	S	S

<b>Tuscany Utilities</b>	<b>3974</b>	<b>3976</b>	<b>4075</b>	<b>4077</b>
Air conditioner: 13,500-BTU ducted central (front)	S	S	S	S
Air conditioner: 13,500-BTU ducted central (rear)	S	S	S	S
Dual heat pumps with 15,000-BTU A/C and 12,700-BTU heat	0	0	0	0
5-watt chassis solar battery charger	0	0	0	0
Furnace: 35,000-BTU electronic ignition floor-ducted	S	S	S	S
Water heater: 10-gallon gas/electric with electric ignition	S	S	S	S
Water heater: Motoraid® 10-gallon gas/electric with electric ignition	N/A	0	0	0
Water heater bypass kit	S	S	S	S
Generator: 7.5 kW Generac® Quietpact	S	S	S	S
Generator: 7.5 kW Onan® diesel	0	0	0	0
Inverter: 2000-watt	S	S	S	S
6-volt Thermoil® auxiliary batteries (two standard, four with 2000-watt inverter)	S	S	S	S
Battery disconnect	S	S	S	S
50-amp, 120-volt service with marine-type detachable power cord	S	S	S	S
Energy management system	0	0	0	0
Exterior GFCI receptacle	S	S	S	S
Enclosed heated potable and holding tanks	S	S	S	S
Black water tank flush	S	S	S	S
Three-way valve for tank/city water fill	S	S	S	S
Washer/dryer prep	S	S	S	S
Washer/dryer combo	0	0	0	0
Telephone hookup	S	S	S	S
Cable TV/satellite hookup	S	S	S	S
Pre-wired for roof-mounted satellite dish	S	S	S	S
DSS manual satellite dish	S	S	S	S
DSS automatic-tracking satellite dish	0	0	0	0
Exterior shower	S	S	S	S
Carbon monoxide, LP gas and smoke detectors	S	S	S	S
Monitor panel with LPG readout	S	S	S	S
Motoraid® auxiliary rear heater	0	0	0	0

<b>Tuscany Weights &amp; Measures</b>	<b>3974</b>	<b>3976</b>	<b>4075</b>	<b>4077</b>
Chassis	Freightliner®	Freightliner®	Freightliner®	Freightliner®
Wheelbase	252	252	266	266
Overall length	40' 0"	40' 0"	41' 0"	41' 0"
Overall width	101"	101"	101"	101"
Overall height with AC	12' 7"	12' 7"	12' 7"	12' 7"
Std. weight (appx. lbs.)	N/A	23,486	25,550	25,239
GVWR	31K	31K	31K	31K
GCWR	41K	41K	41K	41K
Fresh water (appx. gal.)	99	99	99	99
Grey / black water (appx. gal.)	50	50	50	50
LP (lbs.)	126	126	126	126
Sleeping capacity	4	4	4	4
Exterior storage capacity (cu. ft.)	195	195	215	215
Interior drawers	27	27	25	19
Interior storage capacity (cu. ft.)	15	15	17	14
Fuel capacity (appx. gal.)	100	100	100	100

Floor plans and specifications are subject to change without notice.



P.O. Box 2888 • Elkhart, IN 46515  
 Customer Service: 800-860-3812  
 Sales Department: 800-860-5658  
[www.DamonRV.com](http://www.DamonRV.com)

