

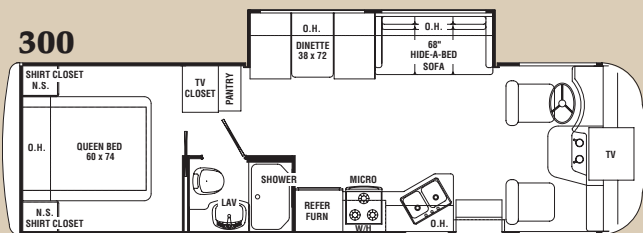
# Passage

by SAFARI

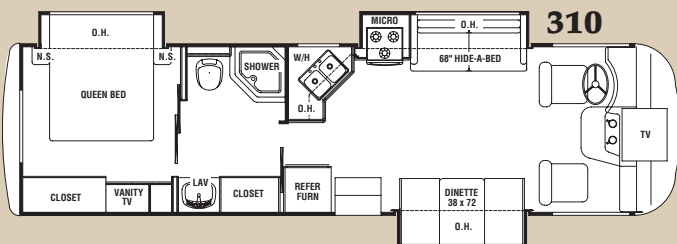


## FLOOR PLANS & SPECIFICATIONS

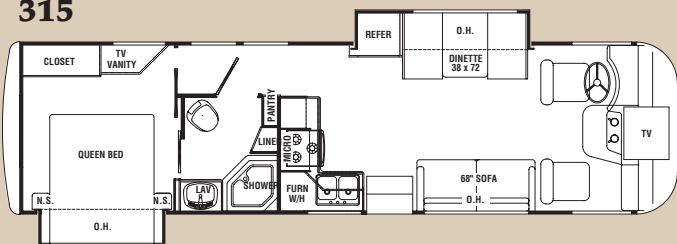
**300**



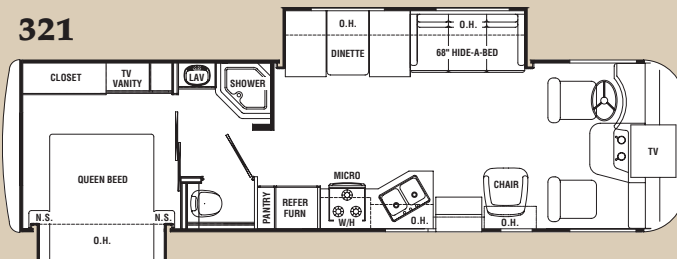
**310**



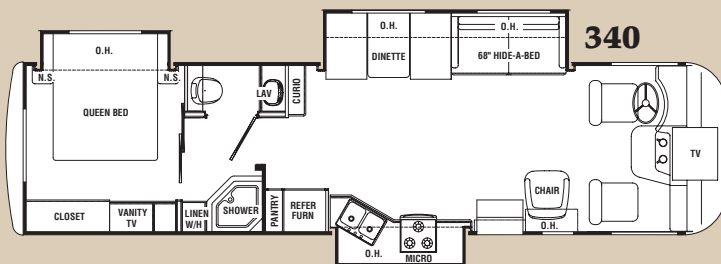
**315**



**321**



**340**



2007 ARISTA/PASSAGE	300	310	315	321	340
<b>Chassis &amp; Weight Ratings (Lbs.)</b>					
Workhorse Chassis - 8.1L Vortec	V8	V8	V8	V8	V8
Gross Vehicle Weight (GVWR)	16,000	18,000	18,000	18,000	20,700
Gross Combined Weight (GCWR)	22,000	22,000	22,000	22,000	26,000
Ford Chassis-6.8L Triton	V-10	V-10	V-10	V-10	V-10
Gross Vehicle Weight (GVWR)	15,700	18,000	18,000	18,000	20,500
Gross Combined Weight (GCWR)	26,000	26,000	26,000	26,000	26,000
<b>Measurements</b>					
Wheel Base	190"	190"	190"	190"	228"
Exterior Length (without ladder)	29' 4"	32' 8"	32' 8"	32' 8"	34' 8"
Exterior Height (with air conditioner)	11' 8"	11' 8"	11' 8"	11' 8"	11' 10"
Interior Height	79"	79"	79"	79"	79"
Awning Size	14'	18'	18'	18'	18'
<b>Tank Capacities</b>					
Fuel (Gallons)	75	75	75	75	75
LPG (Pounds)	68	68	68	81	81
Fresh Water	50	50	50	50	50
Waste Water (Gallons)	40	40	40	40	40
Gray Water (Gallons)	40	40	40	40	40
Water Heater (Gallons)	6	6	6	6	6
Furnace (BTU's)	35,000	35,000	35,000	35,000	35,000

# Standards & Options



## STANDARDS

### Exterior Features

- Tubular aluminum welded sidewalls, roof and floor
- Laminated roof, floor, and walls with high-density block foam insulation
- Air conditioning duct work molded into roof insulation
- Automatic electric entrance step
- In floor rigid heat duct
- Fiberglass exterior sidewalls
- Exterior utility center (N/A on 300, 310 and 315)
- Exterior shower (opt. on 300, 310 and 315)
- Rubber roof
- Automatic hydraulic leveling jacks (opt. on 300, 310 and 315)
- Patio awning and slide-out awnings
- Roof ladder

### Automotive Features

- 5,000 lb. trailer hitch
- Wood grain dash kit
- Dash fans
- Deluxe exterior mirrors
- One-piece fiberglass front and rear caps
- Fog lights

- AM/FM/CD/Cass radio/weatherband and SIRIUS® satellite ready
- Stainless steel wheel liners with valve extenders

### Interior Features

- Residential linoleum (entry way, galley and bath)
- Large metal entry grab handle
- 13,500 BTU roof air conditioner-front
- Mortise and tenon raised panel overhead cabinet doors
- Brushed nickel finish hardware
- Mini blinds throughout
- Soft touch vinyl ceiling (N/A on 300, 310 and 315)
- Hard vinyl ceiling (N/A on 321 and 340)
- Fabric hide-a-bed sofa (N/A on 300, 310 and 315)
- Overhead lights in living room

### Galley

- Double door refrigerator
- 3-burner high output gas range with oven
- Microwave oven
- Laminate countertops

- Large stainless steel double bowl sink
- Slide-out pantry (N/A on 300, 310 and 315)
- Full extension metal drawer guides

### Entertainment

- Cable television and satellite prep
- 24" color television in front overhead (N/A 300, 310 and 315)
- 20" color television in front overhead (N/A on 321 and 340)
- 20" color television in bedroom (N/A 300, 310 and 315)
- Television cabinet-bedroom

### Bedroom & Bathroom

- Inner spring mattress
- Bedspread and pillow shams
- Vanity with stool (N/A on 300 and 315)
- China bowl toilet
- Power bath vent
- Skylight in shower
- Neo-angled shower with glass door (N/A on 300)

### Safety Features

- Entry door with deadbolt lock
- Smoke, LPG, and carbon monoxide detectors

- Fire extinguisher
- Three-point seat belts
- Seat belts throughout

### Electrical Systems

- Guardian RV Quietpac® 40G (3600 watt) generator (1 A/C only) (N/A on 321 and 340)
- Guardian RV Quietpac® 55G (5500 watt) generator (N/A on 300, 310 and 315)
- 30-amp service
- Marine-style detachable power cord
- 6-gallon gas water heater
- Water heater bypass kit
- Battery disconnect
- Emergency start switch
- "Command Central" systems control switch/monitor panel

### Storage Area

- Large pass-through roto-cast storage compartment
- Flush mount radius luggage doors
- Heated holding tanks (opt. on 300, 310 and 315)

## OPTIONS

### Exterior Features

- Lower paint
- Exterior shower (std. on 321 and 340)

### Automotive Features

- Ultra™ Leather driver and passenger captains chairs
- Six way power driver's seat
- Back-up monitor
- Heated, remote exterior mirrors
- Spare tire and rim (N/A on 340)

### Interior Features

- 13,500 BTU rear roof air conditioner (requires 50 amp service and 5500 watt generator)
- Day/night shades throughout
- Fantastic fan-living area
- Thermal pane windows
- Ultra™ Leather sofa

- Ultra™ Leather hide-a-bed sofa (N/A on 300, 310 and 315)
- Fabric sofa with pedestal table in place of dinette (310 Only)
- Ultra™ Leather sofa with pedestal table in place of dinette (310 Only)
- Fabric recliner in place of barrel chair (N/A on 300, 310 and 315)
- Ultra™ Leather recliner in place of barrel chair (N/A on 300, 310 and 315)

### Galley

- Half-Time microwave oven with 3 burner range top

### Entertainment

- Surround sound home theater system w/DVD player
- Exterior entertainment center with CD player

- 14" color television-bedroom (N/A on 321 and 340)
- DVD player
- Satellite dish

### Electrical System

- 50 amp service/gas elect Water Heater (5.5 gen. required)
- Onan Microquiet™ 4000 (4000 watt) generator (N/A on 321 and 340)
- Guardian RV Quietpac® 55G (5500 watt) generator
- Onan RV Marquis Gold (5500 watt) generator
- Second auxiliary battery

### Storage Area

- Heated and enclosed roto-cast. holding tanks (Std. on 321 and 340)



**Live out Loud.**

91320 Coburg Industrial Way  
Coburg, OR 97408  
1.800.458.8735  
www.safarimotorcoaches.com



**MONACO COACH CORPORATION**  
Monaco is a traded on the New York Stock Exchange under the listing MNC. 2006, Monaco Coach Corporation

**Your Dealer**

1 Towing capacity is limited by GCWR; your vehicle's towing capacity is the difference between the GCWR and the actual vehicle weight, including all water, fuel, passengers and cargo. Your towed vehicle should be equipped with auxiliary brakes if the weight of the towed vehicle exceeds 1,000 lbs. Consult your owner's manual for further towing information.

2 All tank capacities are estimated based upon calculations provided by the tank manufacturers and represent approximate capacities. The actual "usable capacity" may be greater or less than the estimated capacities based upon fabrication and installation of the tanks.

3 Actual filled LP capacity is 80% of listing due to safety shut-off required on tank.

The actual overall length of the recreational vehicle may differ from that indicated in the brochure due to variances in the manufacturing process and/or installed components. The actual length may be greater or less than that indicated. Due to the large variety of options and floorplan arrangements available to our customers, actual weights for each unit can differ significantly. Monaco Coach provides a weight sticker on each unit we produce which includes that unit's tank capacities and approximate weight. Consult your local Monaco Coach dealer for unit availability and further information. The information printed in this brochure reflects product design, fabrication, and component parts at the date of printing. The manufacturer reserves the right, at any time, to make changes in product design or material or component specifications as its sole option, without notice. This includes the substitution of components of a different brand or trade name which will result in comparable performance. All information printed in this brochure is subject to change after the date of printing. Some features shown or mentioned in this brochure are optional and may only be available in selected floorplans. Photographs may show props or decorations that are not standard equipment on Monaco Coach models. Monaco Coach, the Monaco logo and its design, are registered trademarks. All other products and company names are trademarks and/or registered trademarks of their respective holders. While the color of the motorhome's exterior and the interior fabrics depicted in this sales brochure are fair and reasonable depictions, the colors depicted may not be an exact match of the actual colors because of the variances in photoprocessing and variances caused by inserting the photographs within the sales brochure. Due to product improvements, changes during the model year and/or transcription errors that may occur, information represented within this brochure may not be accurate at the time of your purchase. If certain information is significant to your purchasing decision, please confirm the information with your dealer prior to submitting your order. Component part and appliance manufacturers issue limited warranties covering those portions of the recreational vehicle not covered by the Limited Warranties issued by Monaco Coach Corporation. To learn which specific component parts and appliances are excluded from the Limited Warranties issued by Monaco Coach Corporation, please contact your selling dealership or Monaco Coach Corporation directly, or review the warranty packet inside the recreational vehicle.