

FLEETWOOD
Driven to Explore

Set your course.

{Flair}

FLAIR Class A Gas 2005



FEED YOUR ACTIVE LIFESTYLE
AND ALWAYS KEEP MOVING.
CUSTOMIZE YOUR ADVENTURES
AND EXPLORE UNTIL YOUR
HEART'S CONTENT. ON THE
ROAD, YOU CALL ALL THE SHOTS.



WELL DESIGNED.

Enjoy Flair's spacious layout, providing a comfortable atmosphere on the road. Features like flush flooring provide a near seamless living area when the slide-outs are extended, while comfortable Flexsteel® furniture, with a lifetime warranty on the frame, is the perfect place to relax.



THE FLEXSTEEL® RECLINER (optional, swivel chair is standard) is very comfortable and features a convenient fold away table perfect for reading a book, using a laptop or enjoying a snack.



THE CHILL GRILL provides fast air conditioning for those warm days.



SPACIOUS OVERHEAD STORAGE is a great place to keep books, DVD's or video tapes for your long journeys.

Flair 33R shown in Heritage Olive interior decor with Summer Oak wood finish.



DELUXE BALL BEARING, FULL-EXTENSION DRAWER GUIDES on all the drawers throughout Flair are very sturdy and give you full access to the drawers.



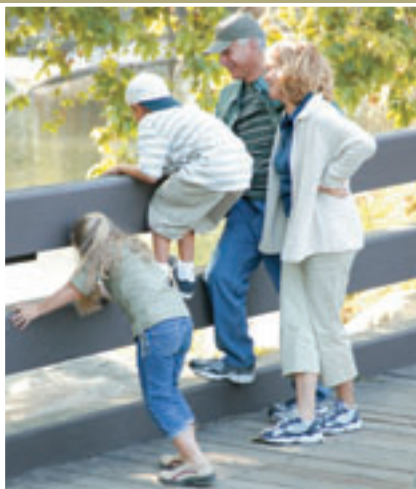
SPACIOUS OVERHEAD STORAGE in the galley has adjustable shelves (select models) and provides plenty of space to store full-size plates and dishes.



DESIGNED FOR YOU.

You'll be right at home in Flair's well appointed galley. It's hard to believe so many conveniences of home are now at your fingertips. You'll love the easy to use pull-out baskets in the pantry for storing non-perishables, the Fan-Tastic® roof fan for ventilation, the 8 cu. ft.

Dometic® double door refrigerator for food and drink and elegant raised panel wood cabinetry. You'll also enjoy a water filter in the galley sink for fresh drinking water as you venture from place to place. You may never go home again.



***FLAIR'S BEDROOM** is well equipped with under-the-bed storage as well as overhead cabinets providing ample storage for extra bedding or linens. You'll also love the comfortable queen-sized innerspring mattress and night pleated shades to keep the sun out during those afternoon naps.*



***THE BEDROOM WARDROBE** with mirrored doors gives you more than enough room for storing your clothing, and any extras you may need along the way.*



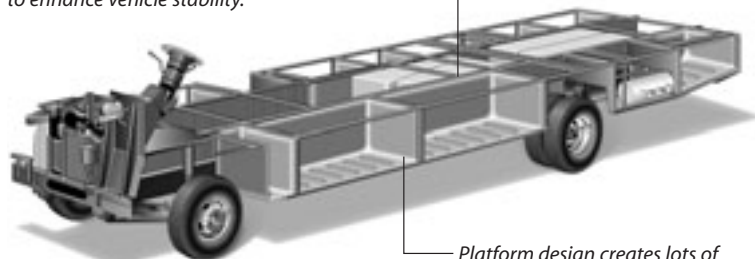
***A CONVENIENT COMPUTER DESK** in the bedroom comes complete with phone and power jacks, giving you the ability to email friends and family during your travels.*

POWER PLATFORM CONSTRUCTION

Fleetwood's patented Power Platform begins with two 10-in. steel I-beams welded lengthwise to the chassis. From the beams, steel outriggers extend outward. Together, they create a basement for fluid tanks and storage while supporting the floor, walls and roof with a rigid metal frame. This complements the chassis to make it even stronger.

Holding tanks are positioned in the bottom center of the platform to enhance vehicle stability.

Holding tanks are enclosed between the upper and lower basement floors. This allows them to be heated to prevent freezing in cold weather.



Platform design creates lots of storage area and supports the sturdy Vacu-Bonded® walls.

*Drawings are for illustrative purpose only to highlight aspects of motor home construction. Actual motor home design depends on model and is subject to change.

An Exterior Awning is standard and provides great protection from the weather, so you can enjoy your surroundings rain or shine.

Tuff-Ply Roof is UV resistant, durable, easy to clean, and doesn't scratch like many competitors' fiberglass or aluminum roofs.



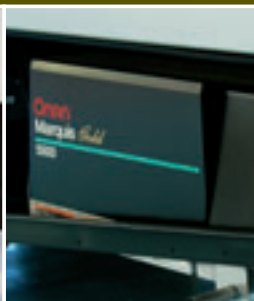
Tuff-Coat® Exterior Fiberglass Sidewalls are Vacu-bonded® into a strong composite structure, as opposed to competitors' thin fiberglass laminate.

Storage Compartments are lighted and include single paddle latches, gas-lift strut supports, stainless-steel hinges and insulated aluminum doors.

Vehicle shown in Heritage Olive.



THE UTILITY COMPARTMENT provides a central place to empty your holding tanks and includes a water sprayer for quick clean up. For your convenience the compartment is lighted and all components are clearly marked.



ONAN® 4.0 kW MICRO QUIET GENERATOR minimizes campground noise and runs very quietly compared to other generators (5.5 kW standard on 33R & 34F).



THE REAR FUEL FILL is easy to fill up no matter what side of the pump you're on.



EXTERIOR EZ-STORE® COMPARTMENTS are durable, move with the slide-out and have an easy to clean fiberglass interior.



FLAIR COMES STANDARD with a 24" RCA® TV in the living room, and storage for video tapes and DVD's. (A DVD/VCR combo player is optional).



THE DRIVER'S AREA features an AM/FM radio with CD player, easy to read gauges, convenient map storage and cup holders.

THREE INTERIORS, TWO WOOD CHOICES. THE CHOICE IS YOURS.

Choose from three interior decor motifs, with color coordinated exterior graphics and two wood finishes for a total of of six distinct decor choices.



SWEET BLUETTE

Living/Dining Room



Sofa Bed



Dinette Cushions & Throw Pillow

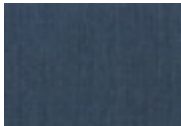


Swivel Chair

Bedroom



Bedspread

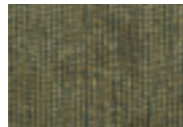


Pillow Shams



HERITAGE OLIVE

Living/Dining Room



Sofa Bed



Dinette Cushions & Throw Pillow

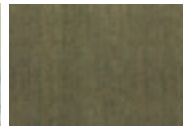


Swivel Chair

Bedroom



Bedspread

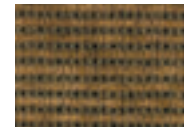


Pillow Shams



ASIAN JUTE

Living/Dining Room



Sofa Bed



Dinette Cushions & Throw Pillow



Swivel Chair

Bedroom



Bedspread



Pillow Shams

INTERIOR WOOD FINISHES



Summer Oak



Windsor Birch

Flair Class A Gas

What Drives You?

Maybe it's feeling like you're the only one on Earth. Perhaps it's the unique sense of closeness with the great outdoors. Or, it might be the joy that comes from spending quality time with family and friends. Whatever the reason, we know that you have a strong drive to experience everything that comes with spending time on the road. And for more than 50 years, we've shared that passion with you. Because we're RV enthusiasts ourselves, you can see our passion in the vehicles we design and build. Own a Fleetwood, and you'll feel like you're not just traveling, but embarking on an experience unlike any other. Set your own course for adventure and get out there and explore the world around you. Once you do, you'll see what it is that drives us — it's you.

RV OWNERCARE* is a limited one-year/15,000-mile and three-year/50,000-mile structural warranty and it is fully transferable for the first 12 months. RV OWNERCARE is one of the RV industry's most comprehensive programs and includes systems, appliances, components and construction, with no deductible and no service charge. RV OWNERCARE coverage is provided from a company that will be around in the future to service your needs. See your nearest Fleetwood dealer for a full explanation of benefits and restrictions.

CLUB FLEETWOOD As a Fleetwood owner, you're eligible to become a member of our owners' group, Club Fleetwood. It's a perfect way to meet other Fleetwood owners who love to travel to beautiful resorts and vacation spots all across America. Call (877) 577-2560 and join the fun! Or visit www.fleetwood.com/clubs to learn more.

FLEETWOODRV.COM To locate a dealer near you, visit our website or call 1-800-444-4905. We can also be contacted at Fleetwood Customer Relations, P.O. Box 7638, Riverside, CA 92513-7638.



www.fleetwoodrv.com

IMPORTANT—PLEASE READ Product information, photography and illustrations included in this publication were as accurate as possible at the time of printing. For further product information and changes, please visit our website at www.fleetwoodrv.com or contact your local Fleetwood dealer. Prices, materials, design and specifications are subject to change without notice. All weights, fuel, liquid capacities and dimensions are approximate. Fleetwood has designed its recreational vehicles to provide a variety of uses for customers. Each vehicle features optimal seating, sleeping, storage and fluid capacities. The user is responsible for selecting the proper combination of loads (i.e. occupants, equipment, fluids, cargo, etc.) to ensure that the vehicle's capacities are not exceeded.

Your local Fleetwood dealer is:



*For complete info see your Fleetwood dealer. © 2004. Fleetwood Enterprises, Inc.
Printed in the USA. Inventory control number FLO5B1 8/04.