

GULF STREAM



SILVER BULLET 2010



POWER
MEETS
FUEL
EFFICIENCY

THE EVOLUTION OF THE AMERICAN RV INDUSTRY

GET THE MOST...

- TOWING CAPACITY
- EXTERIOR STORAGE
- FUEL EFFICIENT MOTORHOME
IN INDUSTRY HISTORY

Your Quality Time Comes From Our Quality Planning

SILVER BULLET RESIDENTIAL LIVING



IMAGINE YOUR HOME WITH AN EVER CHANGING VIEW

Excellence of a motorhome begins with the ability of the manufacturer to make you feel like you are at home while you are traveling out on the road. The Silver Bullet has mastered just that feat. Spectacular features throughout this one-of-a-kind motorhome set your mind at ease.

Starting with the panoramic sky view cap, the ambient lighting of the Silver Bullet makes the whole motorhome seem larger.

The expansive cabover sleep area gives anyone enough room to enjoy a restful night's sleep, or you can option in an ultimate cabover entertainment center.

RESIDENTIAL LIVING



WHEN IT COMES TO QUALITY THE SKY IS THE LIMIT

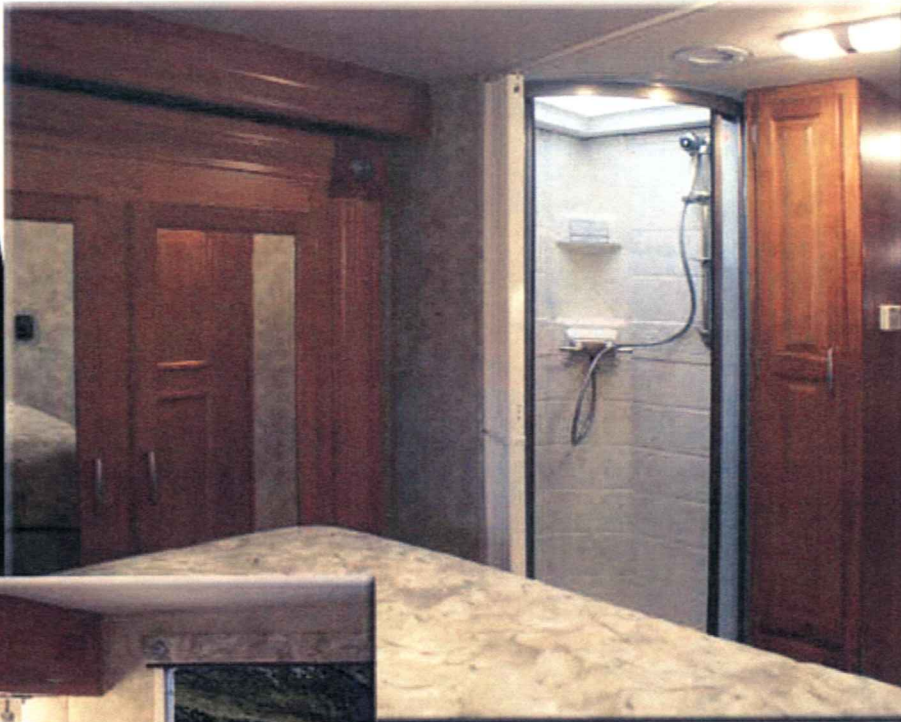
As you enjoy the well laid out floor plans (three to choose from), you will notice the workmanship is focused and pristine. Specifically, the solid hardwood maple cabinet doors and frames act as the backdrop for the best looking interior in the motorhome market today.

Be amazed at the spacious exclusive patented atrium room with horseshoe dinette. This uniquely designed eating area with a view (rain or shine) gives everyone room to enjoy each other as well as take in a movie on the high quality 32" monitor.

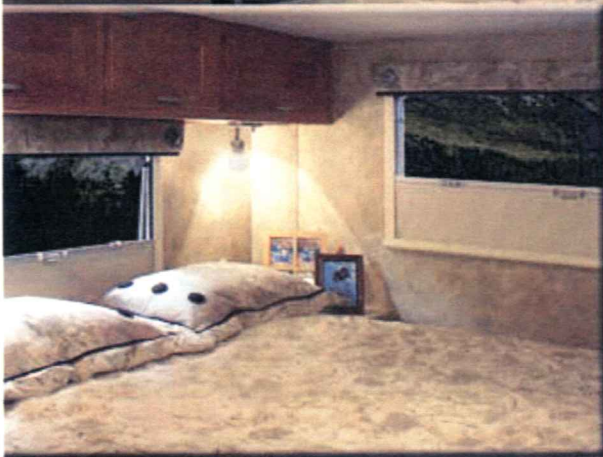
Every floor plan's kitchen expands on design traditions reaching a new level of refinement. Plenty of countertop space, drawers, and storage meet all your needs and desires.
Good for you! Good for everyone!



RESIDENTIAL LIVING



As you prepare for the day or unwind in the evening, you can enjoy a full size residential radius shower with luxurious radius shower door.



REJUVINATION... REST ASSURED

The impressive bedroom suite with king bed gives you the privacy and accommodations to relax while on the road after a long day of site seeing.

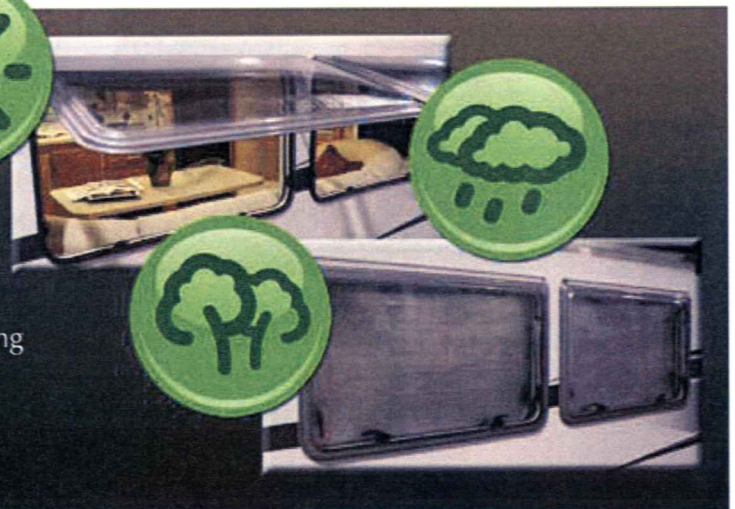
Beau Floor™ The very latest in flooring has been used in the prolific Silver Bullet. No carpet to clean or mildew to worry about. This exclusive flooring is the most durable flooring in the RV industry.

Beau Floor™



EUROPEAN-STYLE ACRYLIC WINDOWS

These dual panel high resolution acrylic windows eliminate virtually all "squeaking" as you drive down the road. In addition to their extraordinary insulating and light control qualities, each window acts as an awning for those raining days.



SILVER BULLET DRIVEABILITY

The Silver Bullet features a spacious cockpit with an expansive view that assures you safety on the road.



DRIVES LIKE A DREAM - SLEEK, SMOOTH & STYLISH

One of the greatest things to admire about the Silver Bullet is the automotive style and feel in the cockpit. Although the Sterling 5500 Ram chassis is classified as a Heavy Duty truck due to its rugged 19,500 lb GVWR, *she drives like a dream.*

Every indicator is easy to operate and accessible.

The styling and comfort of the driver/passenger chairs makes any long trip easy to bear.

The unique aerodynamic design of the Silver Bullet has created the best fuel efficiency of any full size motorhome ever made...

***16mpg**

*Comparison is estimated and based upon a similar Ford chassis – actual mileage will vary depending upon how you drive and maintain your vehicle. Emissions are estimated and may vary. Ask Dealer for details.

THE SILVER BULLET VS STANDARD CLASS C



THE UNIQUE
AERODYNAMIC DESIGN
HAS HELPED CREATE
THE MOST FUEL
EFFICIENT FULL SIZE
MOTORHOME
EVER MADE

SILVER BULLET DRIVEABILITY

The very best drive train was developed in this "one of a kind" *efficiently powerful* package. Inspired by Toyota, the Six-Speed Aisin transmission and the 305 horse power Cummins diesel engine give you the performance you expect when traveling. The maximum calibrated rear axle ratio reduces engine noise and assists in fuel efficiency.

Comparing fuel efficiency with others in its class will demonstrate not only that the Silver Bullet is powerful, *she is efficient... Efficiently Powerful*



As you depart on your voyage, you will realize the unbelievable range of this efficiently powerful motorhome. You will be relieved as you save the time and hassle of stopping to fill up your motorhome.

SILVER BULLET
WITH STERLING 5500 RAM 305 CUMMINS
52 GAL TANK X 16 MPG = 832 MILES PER TANK
52 GAL X \$3.25 PER GAL = \$169 FILL UP

VS

STANDARD KODIAK 6.6 DURAMAX DIESEL CLASS C
GETS 11 MPG
IT WOULD TAKE 75.6 GAL TO TRAVEL 832 MILES
AT \$3.25 PER GAL = \$245

YOU SAVE \$76 EVERY TIME YOU FILL UP!
SAVE \$461 ANNUALLY (BASED ON 5,000 MILES DRIVEN)

*Fuel mileage is estimated. Actual mileage will vary depending upon how you drive, road and weather conditions and how you maintain your vehicle.

SILVER BULLET POWER

The Silver Bullet is the next generation of RV's in America. Gulf Stream combines advance automotive engineering from Toyota and Sterling to maximize power and fuel efficiency with light weight Euro-inspired design for a cutting edge polished coach.

NEVER BEFORE
HAS THERE BEEN A
MOTORHOME THAT CAN TOW
10,000 LBS, GET UP TO
16 MPG, AND THE LARGEST
ON BOARD STORAGE
COMPARTMENT
IN ITS CLASS!

A new wonder and achievement - from the exterior sleek high gloss fiberglass to the lightweight thermopanel acrylic windows, the Silver Bullet will exceed all your expectations while keeping money in your wallet. Never before has there been a motorhome that could tow 10,000 pounds with the largest on board storage compartment and get up to 17 mpg.



TAKE PRIDE IN YOUR RV AND OUR PLANET

The RV industry has never seen the combination of fuel efficiency and towing capacity in the same unit, thus the tag line Efficiently Powerful.

The engineered angles of the front cap and wings in conjunction with the Sterling 5500 Series chassis, cut through the wind making your ride smooth while saving hundreds of dollars on fuel and preserving resources.

Not only do you have the largest onboard storage compartment, the Silver Bullet gives you the highest towing capacity in its class, 10,000 pounds!

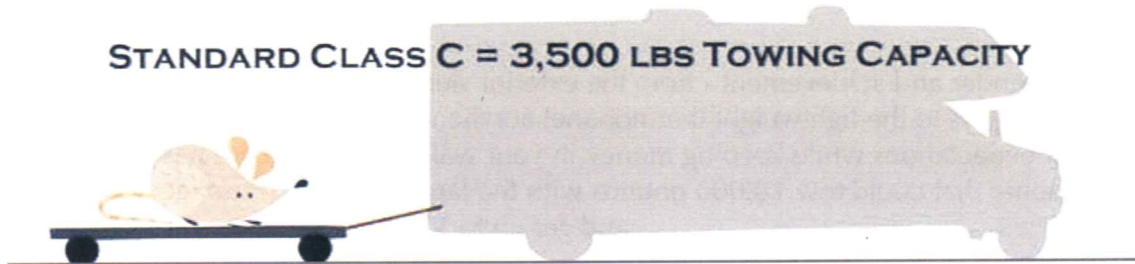
Turn the page and compare!

SILVER BULLET TOWING POWER

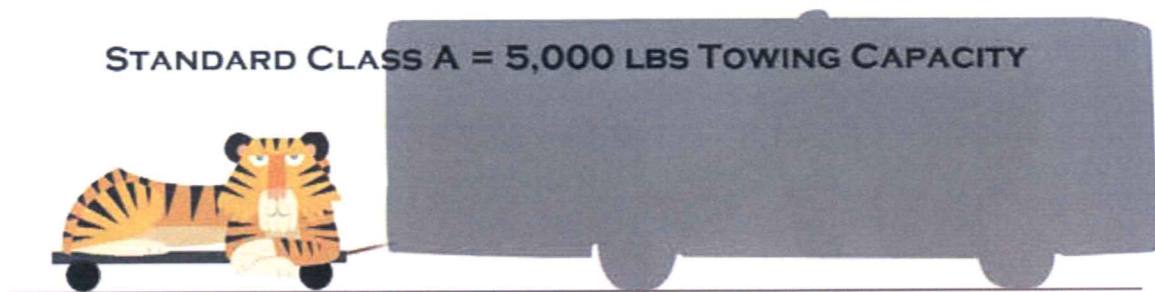
POWER TO TOW WHAT YOU WANT - WHERE YOU WANT

The 10,000 pound standard hitch is the ultimate in Super C towing utilizing the efficiently powerful 305 Cummins diesel with enhanced Six-Speed Aisin transmission.

STANDARD CLASS C = 3,500 LBS TOWING CAPACITY



STANDARD CLASS A = 5,000 LBS TOWING CAPACITY



**THE SILVER BULLET
10,000 LBS
TOWING CAPACITY**



Take ALL your favorite toys from home with you!



EXTERIOR STORAGE



"GORILLA STORAGE" - BIG & STRONG

When you take your Silver Bullet on the road, you don't leave any comforts behind. The largest rear storage compartment in its class gives you the ability to bring large items on board without leaving them out in the elements.



**104 CUBIC FT
OF EXTERIOR STORAGE
- THE LARGEST
IN ITS CLASS!**

GORILLA STORAGE





STANDARDS & OPTIONS

SHOW AND COMPARE

Exclusive Features
of the Silver Bullet

SILVER BULLET

OTHER

<input checked="" type="checkbox"/>	Sterling Chassis	<input type="checkbox"/>
<input checked="" type="checkbox"/>	305 HP Cummins Engine	<input type="checkbox"/>
<input checked="" type="checkbox"/>	6-Speed Aisin Transmission	<input type="checkbox"/>
<input checked="" type="checkbox"/>	Burden Bearing Suspension	<input type="checkbox"/>
<input checked="" type="checkbox"/>	2 Overdrives	<input type="checkbox"/>
<input checked="" type="checkbox"/>	Exhaust Brakes	<input type="checkbox"/>
<input checked="" type="checkbox"/>	3 Year/180,000 Mile Transmission Warranty	<input type="checkbox"/>
<input checked="" type="checkbox"/>	10,000 lb Hitch	<input type="checkbox"/>
<input checked="" type="checkbox"/>	Beauflooring	<input type="checkbox"/>
<input checked="" type="checkbox"/>	Sky View Window	<input type="checkbox"/>
<input checked="" type="checkbox"/>	Thermopanel Acrylic Windows	<input type="checkbox"/>
<input checked="" type="checkbox"/>	MAX Cubic Foot Storage	<input type="checkbox"/>
<input checked="" type="checkbox"/>	Solid Hardwood Cabinetry	<input type="checkbox"/>
<input checked="" type="checkbox"/>	Spacious Horseshoe Dinette	<input type="checkbox"/>
<input checked="" type="checkbox"/>	Large Radius Shower	<input type="checkbox"/>

DON'T SETTLE FOR LESS!

STANDARDS

CHASSIS

- 19,500 GVWR, Cummins Powered Ram
- 5500 Ram Chassis, 305 HP Cummins

EXTERIOR

- Slide Out Room (Sofa, Din)
- Slide Out Room (Bed/Bunk Beds)
- Slide Out Room (Din, Refer)
- Slide Out Room (Bed)
- Seamless G3 Fiberglass Exterior Walls
- Welded Aluminum Perimeter Frame
- Laminated Radius Ducted TOP Roof
- Laminated Steel Frame Floor
- w/ Metal Underbelly
- (2) Slide Out Toppers
- Basement Storage
- Bumper Cover
- Double Electric Step
- Stainless Steel Wheel Inserts
- Undercoat Paint
- Rear Mud Flaps
- Heated & Remote Exterior Sideview Mirrors
- Rear Window
- Electric Awning
- Acrylic Thermopane Windows
- Skirt Paint
- Running Boards
- 10,000 Lb Hitch
- Anti-Sway Bars Front & Rear

DÉCOR

- Roll Goods in Kitchen, Bath & Hall
- Hard Rock Maple Interior
- Fluorescent Light over Kitchen Sink
- Maple M&T Cabinet Doors
- Hardwood Stiles & Trim

HEATING & COOLING

- Dash AC
- 13,500 BTU Ducted AC
- 35,000 BTU Furnace

BATH

- Corner Shower w/ Neo Round Shower Door
- 24 x 38 Shower w/ Accordion Shower Door
- Skydome
- Power Bath Vent

ELECTRICAL

- Ceiling Light Wall Switch
- Monitor Panel
- Generator Switch & Hour Meter
- TV Jack n Bedroom
- Cable TV Ready
- TV Antenna w/ AMP & Boost
- Flat LCD TV w/ Arm Across from Bunks
- w/ Wireless Headsets
- Side Cabover Entertainment Center
- w/ LCD Color TV
- AM/FM Radio w/ CD Player in Cab

FURNISHINGS

- Queen Bed w/ Lifts, Innerspring Mattress,
- Bedspread & Pillows
- (2) 28 x 72 Bunk Beds
- Single Barrel Chair
- 2-Way D/P Seats w/ Armrests
- Soft Touch J-Knife Sofa

- J-Knife Sofa (PS)
- Pleated Privacy Door
- Soft Touch H-A-B Sofa IPO Cloth
- Inside Handrail
- Decorative Sofa Pillows
- Dream Dinette
- Comfort Plus Booth Dinette

APPLIANCES

- 6 Gal Electronic Ignition Water Heater
- w/ By-Pass Valve
- LP Gas Tank
- Carbon Monoxide Detector
- LP Leak Detector
- Sm. 2-Way Dbl Door Refer
- OTR Convection Microwave
- w/ 3-Burner Top

POWER

- Auxillary Battery
- 50 AMP Service w/ Auto Change Over & Converter
- Generator Prep
- Battery Disconnect

OPTIONS

POWER

- Emergency Start Switch
- Dual Auxiliary Batteries
- 6.0 Onan Diesel Generator

MISCELLANEOUS

- Ladder
- Black Flush Tank

EXTERIOR

- Sky View Cap w/ Shade
- Aluminum Full Auto Jacks
- Weather Pro Electric Awning Upgrade

HEATING & COOLING

- 11,000 BTU Ducted Rear AC
- 15,000 BTU Ducted AC IPO
- 13,500 AC
- Arctic Package

FURNISHINGS

- Wardrobe IPO Bunks (6341)
- Deluxe Comfort Plus Mattress

DÉCOR

- Vinyl Ceiling

ELECTRICAL

- Back-Up Monitor
- 3-Speed Fantastic Fan (Kitchen)
- (7) Fluorescent Lights
- DSS Pre-Wire
- Home Theatre Surround Sound
- Dual Flip Down TV's in Bunk Area
- IPO LCD in Hallway
- Rear LCD Color TV w/ Remote
- AVS 100 Video Box

APPLIANCES

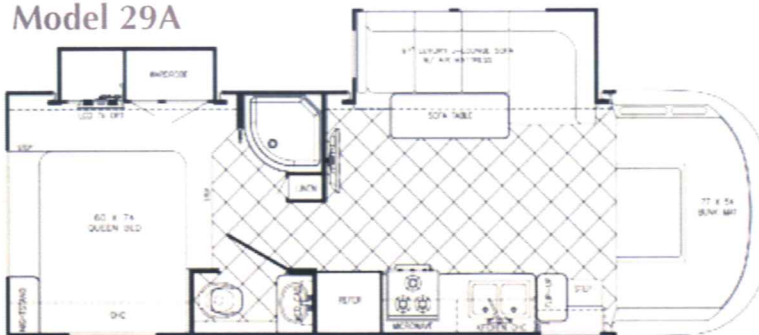
- Large 2-Way Double Door Refer
- Range Cover
- Raised Refer Panels



FLOOR PLANS & SPECS

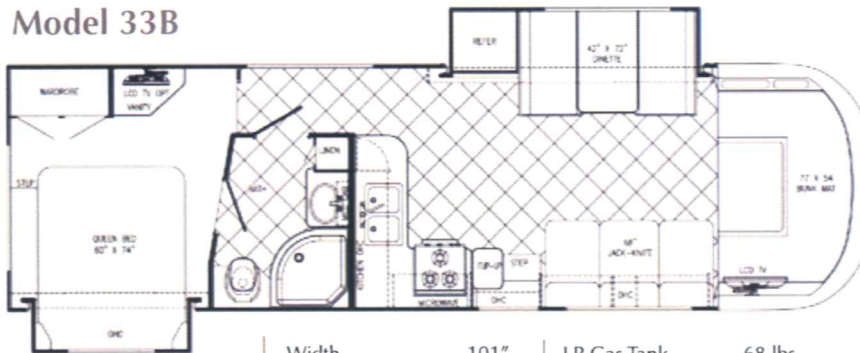
Unforgettable journeys and pursuits are in store for the explorer aboard this mighty motorhome offering three floor plans.

Model 29A



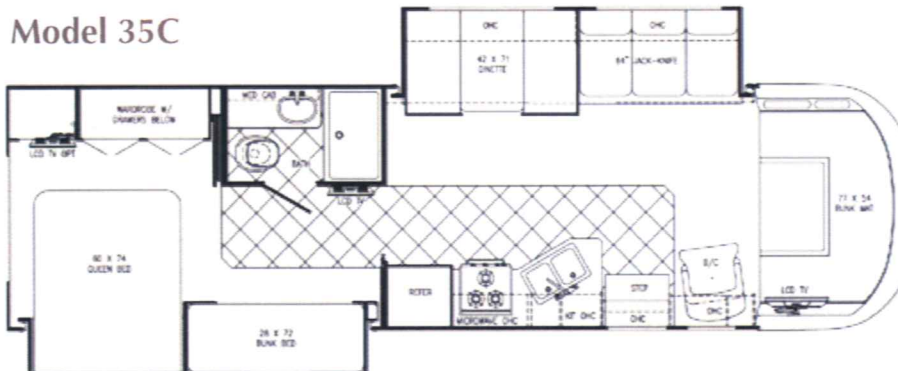
Length	31'9"	Fresh Water	54 gal.	Furnace BTU's	35,000
Height W/AC	11' 11"	Grey Water	36 gal.	Chassis	Ram 5500
Width	101"	Black Water	36 gal.	Engine	I6
Interior Height	77"	Water Heater	6 gal.	Fuel	52 gal.
Interior Width	97"	LP Gas Tank	68 lbs.	Wheel Base	218.5"
				GVWR	19,500

Model 33B



Length	35'1"	Width	101"	LP Gas Tank	68 lbs.
Height W/AC	11' 11"	Interior Height	77"	Furnace BTU's	35,000
		Interior Width	97"	Chassis	Ram 5500
		Fresh Water	80 gal.	Engine	I6
		Grey Water	36 gal.	Fuel	52 gal.
		Black Water	36 gal.	Wheel Base	238.5"
		Water Heater	6 gal.	GVWR	19,500

Model 35C



Length	36'8"	Fresh Water	54 gal.	Furnace BTU's	35,000
Height W/AC	11' 11"	Grey Water	36 gal.	Chassis	Ram 5500
Width	101"	Black Water	36 gal.	Engine	I6
Interior Height	77"	Water Heater	6 gal.	Fuel	52 gal.
Interior Width	97"	LP Gas Tank	68 lbs.	Wheel Base	257.5"
				GVWR	19,500



Gulf Stream Coach is a privately owned company with over 25 years of RV manufacturing experience.

RV dealers and consumers look to Gulf Stream for high-value products offering quality construction, innovative features, contemporary design, unmatched service, and continual support.

Gulf Stream offers the largest product line in the industry. From entry level travel trailers to luxury motorhomes - all use the most advanced manufacturing techniques.

*Your Quality Time Comes
From Our Quality Planning*



Premium Customer Care

Over the centuries gold has been one of the most valuable and precious materials on earth. Gulf Stream feels the same way about its family of customers. We want our family to be out on the open road enjoying our products knowing that they have a friend at Gulf Stream Coach. That's why we have implemented the Gulf Stream GOLD Premium Customer Care Program.

The GOLD program gives you access to a specialized group of customer service representatives that can assist you with your needs.

1-800-289-8787 for more information



The Gulf Streamers RV Club is a valuable benefit to all Gulf Stream owners. Members enjoy staying active and participating in the various rallies and caravans offered throughout the United States and Canada. The Main Stream is the club magazine with up-to-date product information, service tips and company highlights. Members benefit from the Emergency Road Service and Gulf Streamers Insurance options. Both are available at competitive rates with friendly, reliable service. In addition, members save 10% at campgrounds throughout the U.S. and Canada plus receive discounts at national theme parks and special attractions. Members are provided with RV and travel guides, directories and magazines.

Gulf Streamers spend quality time touring attractions, enjoy fabulous meals, take in area highlights and shows - all to make the most out of their RV experience. Go to www.GulfStreamRV.com and click RV Club for more information.

Post Office Box 1005



Nappanee, IN 46550

• Your Gulf Stream Coach Dealer •

Learn More About Our Wide Range of Products at
www.GulfStreamRV.com

For more information and available options, contact your local Gulf Stream Dealer, www.GulfStreamRV.com, or Gulf Stream Coach, Inc. Gulf Stream; Reserves the right to make changes in prices, colors, materials, components, and specifications and to discontinue models at any time without notice or obligation. Assumes no responsibility for any error in type or print reproduction of specifications or floor plans in this brochure. Photos may show equipment or items that are optional and are not included in the price of the coach. Test drive and review a current model at your nearest dealer. ©2009 Gulf Stream Coach, Inc. Nappanee, Indiana U.S.A.