



# TRUCK CAMPERS & TRAILERS





Bigfoot Industries Manufacturing Complex and Head Office

## MESSAGE FROM THE PRESIDENT

Bigfoot Industries is pleased to be entering its twenty-eighth year of building quality recreational vehicles. Our promise to you our valued customer, is our assurance that we listen to your comments and ideas as we design our products with you in mind.

With your approval, Bigfoot Industries pays for your first year membership in the Bigfoot Owner's Club after the purchase of one of our Bigfoot products. For owners, past, present, and future, all it takes is to log onto [www.bigfootowners.com](http://www.bigfootowners.com) to participate in the activities and forums offered. Our Bigfoot family sincerely appreciates your ongoing loyalty and support, and we trust that all moments you experience in your Bigfoot will be outstanding ones.

Sincerely yours,

A handwritten signature in cursive script that reads "S. Mayall".

Sharon Mayall  
President and CEO



Our commitment to our customers in 2006 has strengthened, with Bigfoot recently becoming "Lean Certified" as a World Class Manufacturer.

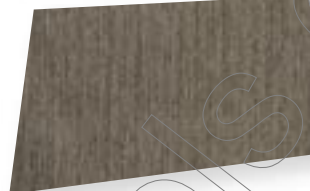
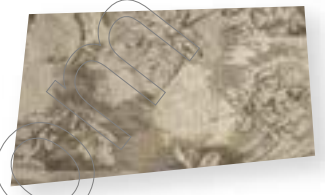
Lean can be described as "a systematic approach to identifying and eliminating waste (non-value-added activities) through continuous improvement by flowing the product at the pull of the customer in pursuit of perfection."

It's a "mind set & commitment" to achieve a totally waste-free operation that's focused on our customers' success...that is achieved by simplifying and continuously improving all processes and relationships in an environment of trust, respect and full employee involvement.



---

## UPHOLSTERY



Fusion

Atlantis

Willow

---

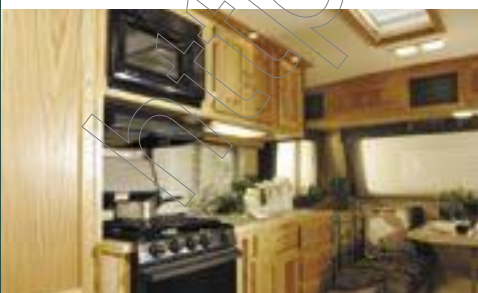
## WOOD TRIM



Cinnamon



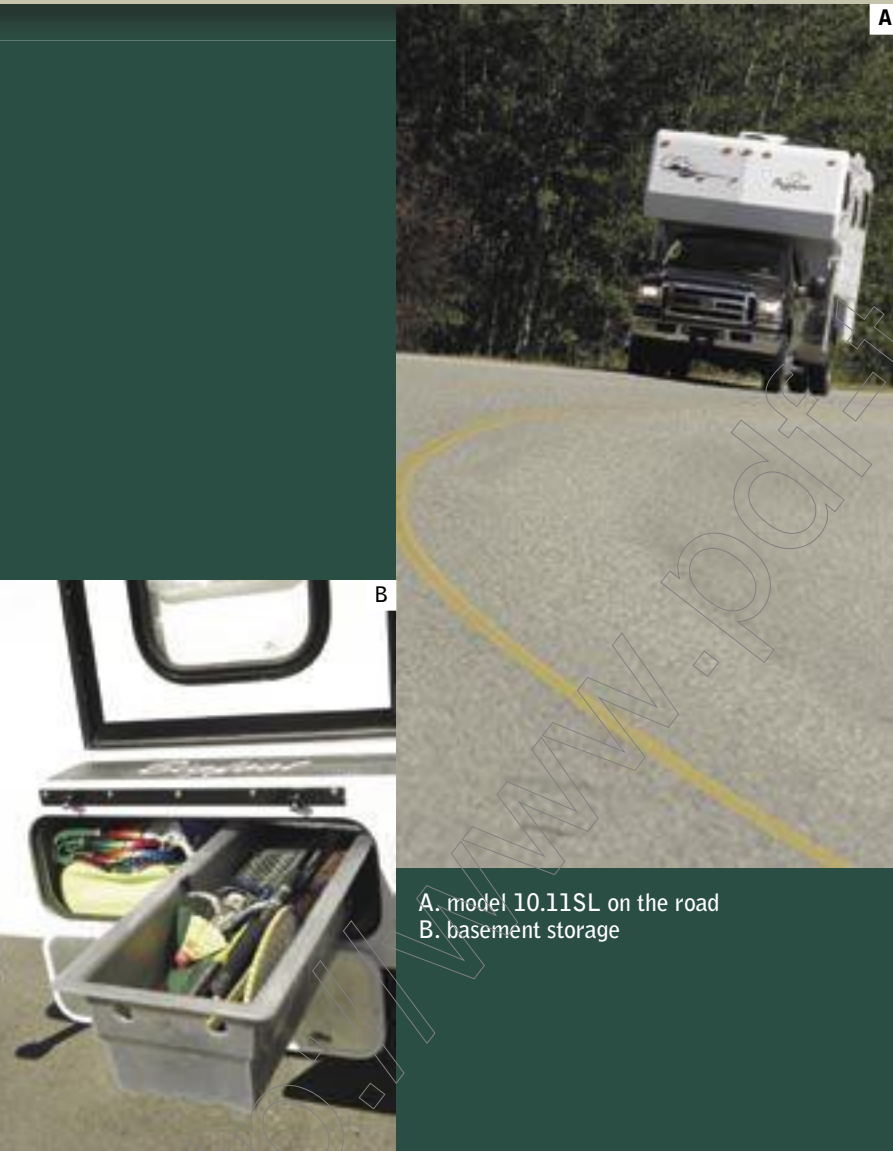
Honey



# 3000 SERIES TRUCK CAMPER

Bigfoot 3000 Series Truck Campers are the top of the line in the Bigfoot Truck Camper lineup, and feature durable construction combined with superior insulation values.

These deluxe wide-body Truck Campers offer our proprietary Fibercore Wall System®, which in combination with standard features such as a slide-out dual battery compartment, high output 30,000 BTU furnace and enclosed, insulated and heated fresh and wastewater holding tanks will allow outdoor enthusiasts greater functionality during the winter months.



A. model 10.11SL on the road  
B. basement storage

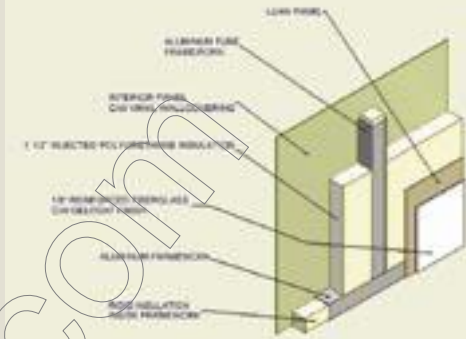




## PATENTED SIDEWALL CONSTRUCTION TECHNOLOGY:

The Fibercore(r) Wall System is a design feature that is unique to Bigfoot motorhomes, and cannot be found anywhere else in the RV Industry.

The walls, roof and floors of Bigfoot Motorhomes are framed with an Insulated tubular aluminum frame. A Gelcoat Fiberglass exterior is then place on this fame which is then injected with a polyurethane insulation material. In addition to providing strength, it also provides superior insulation values when compared to other conventionally bonded sidewalls.



# 3000 SERIES TR



A

A. model 10.11SL galley  
B. optional AM/FM/CD/DVD entertainment center

B



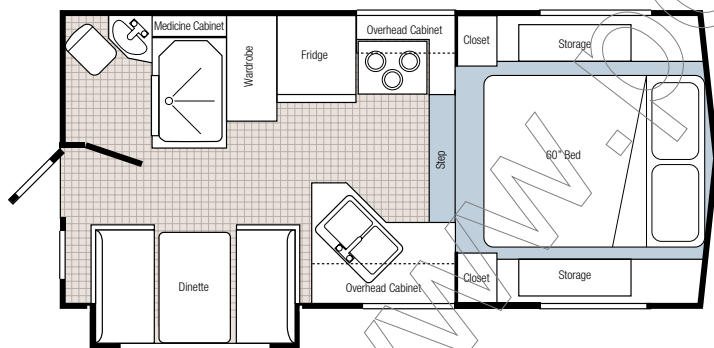
# BUCK CAMPERS

## SPECIFICATIONS

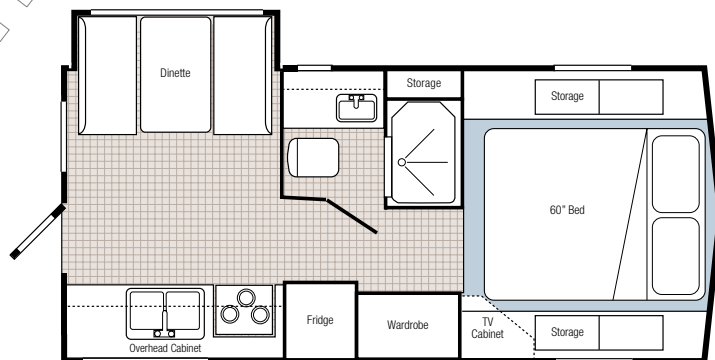
	Units		30C10.10SL		30C10.11		30C10.11SL	
Overall Length	ft/in	mtr	18'-4"	5.59	18'-4"	5.59	18'-7"	5.66
Overall Height*	ft/in	mtr	8'-1"	2.46	8'-1"	2.46	8'-1"	2.46
Overall Width	ft/in	mtr	8'-4"	2.54	8'-4"	2.54	8'-4"	2.54
Interior Headroom	ft/in	mtr	6'-4"	1.93	6'-4"	1.93	6'-4"	1.93
Base Dry Weight	lbs	kg	3380	1533	3110	1411	3270	1483
Fresh Water	US gal.	litres	47	178	32	122	32	122
Grey Water	US gal.	litres	26	99	32	122	32	122
Black Water	US gal.	litres	28	106	32	122	32	122
LPG Capacity	lbs	litres	20	9	20	9	20	9
Water Heater	US gal.	litres	6	23	6	23	6	23
Furnace c/w Elec. Ign.	BTU		30,000	30,000	30,000	30,000	30,000	30,000
Refrigerator 2-Way	cu. ft.	Litres	6	169	6	169	6	169

\* Truck Bed to Fridge Vent

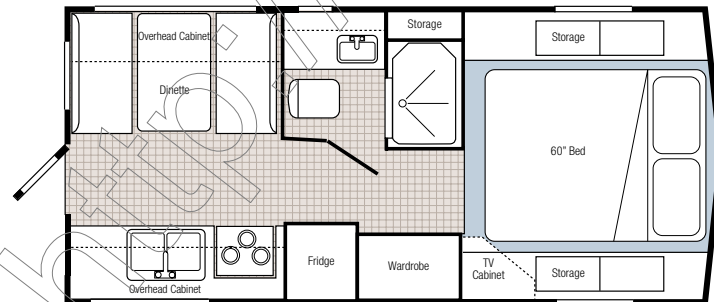
## FLOOR PLANS



30C10.10SL



30C10.11SL



30C10.11



# 3000 SERIES TR

## FEATURES & OPTIONS

EXTERIOR	30C10.10SL	30C10.11FR	30C10.11SL
Fibercore® Bonded Fiberglass Sidewalls c/w 1 1/2" Polyurethane Insulation (R12)	S	S	S
Fibercore® Bonded Ceiling (c/w 2" Polyurethane Insulation (R14))	S	S	S
Slide Out Room with Fibercore® Bonded Fiberglass Sidewall (c/w 1 1/2" Polyurethane Insulation (R12))	S	N/A	S
Seamless Rubber Roof	S	S	S
Radius Corner Safety Glass Windows	S	S	S
Folding Assist Handle	S	S	S
Molded Fiberglass Front Cap	S	S	S
Molded Fiberglass Rear Cap (c/w Bumper and Built-in Step)	S	S	S
Molded Propane Tank Storage Compartment	S	S	S
Molded Fiberglass Basement Storage Compartment (c/w Plastic Storage Tray)	S	S	S
Sewer Hose Storage Compartment	S	S	S
Radius Corner Compartment Doors	S	S	S
Cab Thru Window	S	S	S
Radius Corner Entry Door c/w Deadbolt Lock and Gas Strut	S	S	S
Blocking for Rear Awning	S	S	S
Blocking for Roof Rack & Ladder	S	S	S
Mechanical Jacks (Powder Coated)	S	S	S
Step Bracket	S	S	S
<b>INTERIOR</b>			
Washable Vinyl Wall Paneling	S	S	S
Marine Quality Fabric Headliner	S	S	S
Face Framed Double Screwed Oak Styled Cabinets	S	S	S
Queen Size Bed with Foam Mattress (60" x 80")	S	S	S
42" Headroom in Bunk Area	S	S	S
Shirt Closet in Bunk Area	S	S	S
Day/Night Shades	S	S	S
Bedside Storage Boxes	S	S	S
TV Shelf	S	S	S
Venetian Blinds in Galley	S	S	S
<b>KITCHEN AND APPLIANCES</b>			
3-Burner Cooktop	S	S	S
Electronic Ignition 30,000 BTU Ducted Forced Air Furnace	S	S	S
Fluorescent Light in Galley	S	S	S
12-Volt Rangehood (c/w Monitor Panel)	S	S	S
Stainless Steel Sink	Double	Double	Double
Cutting Board	S	S	S
Single Lever Faucet	S	S	S
20 LB Propane Tank (c/w OPD Valve)	S	S	S
2-Way 6 Cu. Ft. Refrigerator	S	S	S
<b>ELECTRICAL</b>			
Electrical 120-VAC/30-Amp Service	S	S	S
45-Amp DC Power Converter (c/w Battery Charger)	S	S	S
Prewire for Roof Air and Microwave	S	S	S
Power Fan in Bathroom	S	S	S
Stereo Prewire (c/w 4 Speakers & Antenna)	S	S	S
Molded Exterior Battery Compartment (c/w Pull-out Tray)	S	S	S
Exterior Lights (3)	S	S	S
Electric Jack, Prewire	S	S	S
<b>PLUMBING</b>			
City Water Hookup	S	S	S
12-Volt Demand Water Pump System	S	S	S
Molded Fiberglass Shower Enclosure (c/w Vanity and Medicine Cabinet)	S	S	S
Water Heater Bypass System	S	S	S
RV Anti-Freeze Pickup System	S	S	S
Foot-flush RV Toilet	S	S	S
Electronic Ignition Hot Water Heater (6 Gallon)	S	S	S
Enclosed Heated & Insulated Holding Tanks	S	S	S





<b>SAFETY</b>	<b>30C10.10SL</b>	<b>30C10.11FR</b>	<b>30C10.11SL</b>
MVSS 302 Fire Rated Automotive Fabric	S	S	S
Smoke Detector	S	S	S
Propane Detector	S	S	S
Fire Extinguisher	S	S	S
Carbon Monoxide Detector	S	S	S
Egress Window	S	S	S
<b>OPTIONS</b>			
A & E Awning (Recessed)	N/A	8'	8'
AC Roof – 11,00 BTU	0	0	0
Battery Disconnect (Electronic)	0	0	0
Black Tank Rinse System	0	0	0
Camper 5-Step	0	0	0
Camper 6-Step	0	0	0
Electric Jacks, Motors & Remote	0	0	0
Exterior Shower (c/w Winterizing Valves)	0	0	0
Fantastic Fan, Bathroom (Exhaust)	0	0	0
Fantastic Fan, Bunk (Exhaust)	0	0	0
Fantastic Fan, Galley (Exhaust)	0	0	0
Fiberglass Roof	0	0	0
Generator Ready Package	0	0	0
Generator, Onan Camp Power (2.5kw. Propane – Requires Gen. Ready Pkg.)	0	0	0
Jack Brackets (Dually)	0	0	0
LCD TV (Includes LCD TV Prep. Package)	0	0	0
LCD TV Prep. Package (c/w Swing Arm Bracket)	0	0	0
Optical Rear Vision Door	0	0	0
Privacy Curtain	0	0	0
Rear Door Awning (90")	0	0	0
Rear View Camera System (Color)	0	0	0
Roll Away Shower Door	0	0	0
Skylight (c/w Pleated Shade)	0	0	0
Slide Topper Awning	0	N/A	0
Sofa (In Lieu of Dinette)	0	N/A	0
Solar Energy System (RV50)	0	0	0
Stereo AM/FM – Cassette/CD Changer	0	0	0
Stereo AM/FM – CD/DVD Player	0	0	0
Stereo AM/FM – CD Player	0	0	0
Solar Reflective Thermal Pane Windows	0	0	0
Twin Beds (30" x 74")	0	0	0
<b>PREFERRED OPTION PACKAGE</b>			
Aluminum Framed Sidewalls	Incl.	Incl.	Incl.
Auto Changeover (Propane Regulator)	Incl.	Incl.	Incl.
Bifold Range Cover	Incl.	Incl.	Incl.
Dual Propane Tanks (20 LB ea.)	Incl.	Incl.	Incl.
Oven (c/w 3-Burner Cooktop)	Incl.	Incl.	Incl.
Hidden TV Antenna (c/w TV Booster, Satellite Ready, Cable Hook-up)	Incl.	Incl.	Incl.
Rack & Ladder	Incl.	Incl.	Incl.
Spring Filled Mattress (Exchange)	Incl.	Incl.	Incl.
Skylight in Shower	Incl.	Incl.	Incl.

S = Standard    0 = Optional    POP = Preferred Opt. Package

# 2500



A



B



- A. optional "phant" rack
- B. 25C9.6 (c/w opt. rear door awning)
- C. 25C10.6 (c/w opt. box awning)

C



## 2500 SERIES TRUCK CAMPER

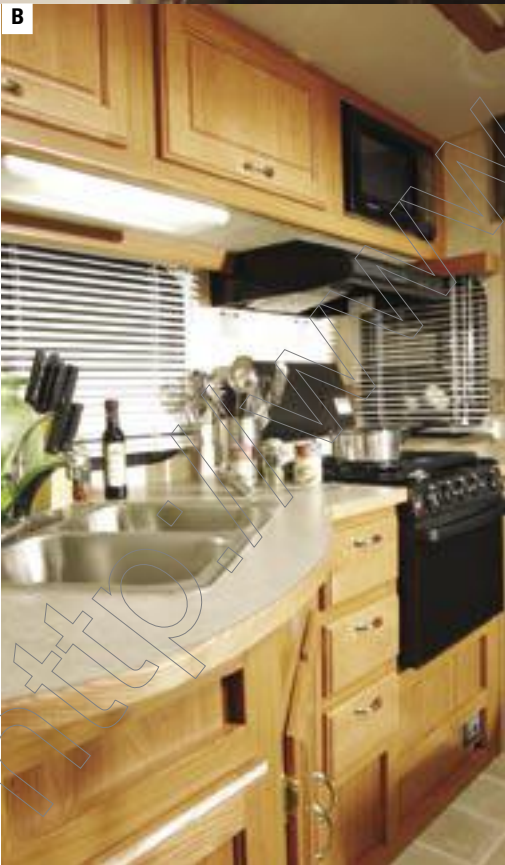
Bigfoot 2500 Series Truck Campers are constructed out of two molded gelcoat fiberglass shells that are joined together similar to a deck and hull of a boat, thus giving the camper its extremely durable and weatherproof design.

Available in long and short box configurations, Bigfoot 2500 Series Truck Campers are insulated using a 1½" high-density polystyrene insulation, and feature a comprehensive list of standard features, large exterior basement storage compartments, and enclosed, insulated fresh and wastewater holding tanks, that are heated by a 30,000 BTU high output furnace.

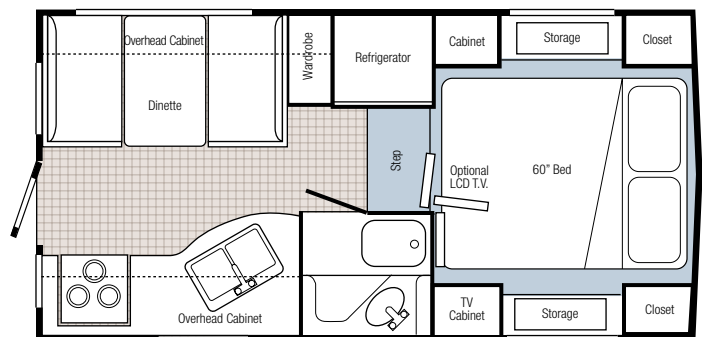




# 2500 SERIES TR



A. 25c10.6 dinette & bunk  
B. 9.4LB galley  
C. 25C10.6 galley  
D. 25C10.6 TV Shelf



25C9.4 short box



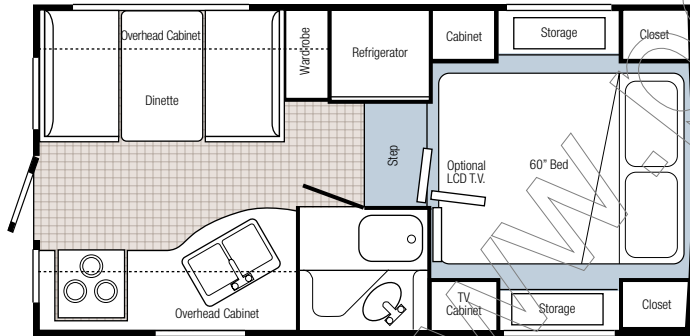
# TRUCK CAMPER S

## SPECIFICATIONS

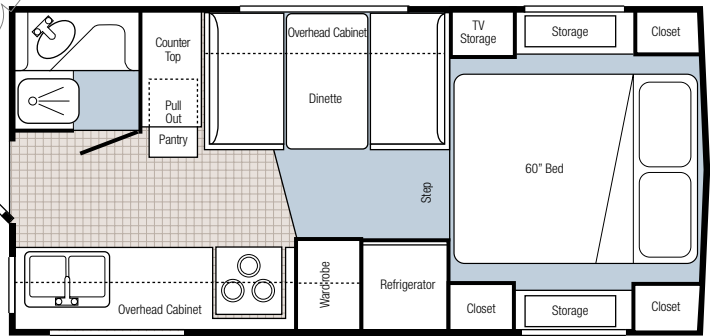
	Units		25C9.4 Short Box		25C9.4		25C9.6		25C10.5		25C10.6	
Overall Length	ft/in	mtr	16'-6"	5.03	16'-6"	5.03	16'-6"	5.03	17'-11"	5.46	17'-11"	5.46
Overall Height*	ft/in	mtr	8'-3"	2.514	8'-3"	2.514	8'-3"	2.514	8'-3"	2.514	8'-3"	2.514
Overall Width	ft/in	mtr	7'-11"	2.41	7'-11"	2.41	7'-11"	2.41	7'-11"	2.41	7'-11"	2.41
Interior Headroom	ft/in	mtr	6'-4"	1.93	6'-4"	1.93	6'-4"	1.93	6'-4"	1.93	6'-4"	1.93
Base Dry Weight	lbs	kg	2435	1105	2435	1105	2400	1089	2600	1179	2600	1179
Fresh Water	US gal.	litres	38	144	38	144	50	190	50	190	50	190
Grey Water	US gal.	litres	32	121	32	121	24	91	24	91	24	91
Black Water	US gal.	litres	22	84	22	84	14	53	19	72	19	72
LPG Capacity	lbs	litres	20	9	20	9	20	9	20	9	20	9
Water Heater	US gal.	litres	6	23	6	23	6	23	6	23	6	23
Furnace c/w Elec.lgn.	BTU		30,000		30,000		30,000		30,000		30,000	
Refrigerator 2-Way	cu. ft.	litres	6	169	6	169	6	169	6	169	6	169

\* Truck Bed to Fridge Vent

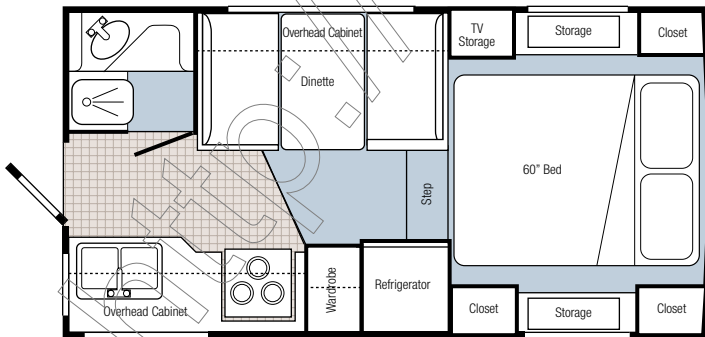
## FLOOR PLANS



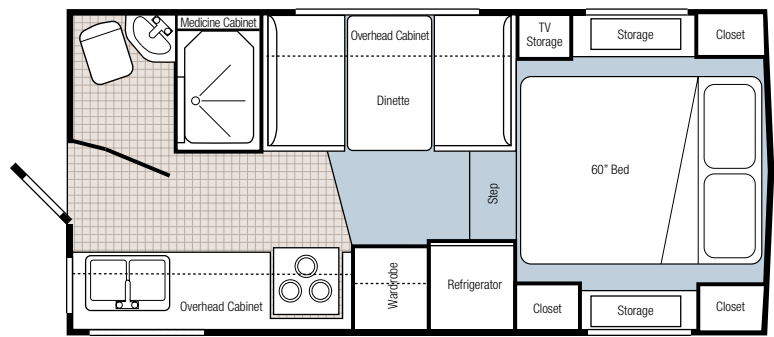
25C9.4 long box (NEW for 2006)



25C10.5



25C9.6



25C10.6

# 2500 SERIES TR

## FEATURES & OPTIONS

	25C9.4SB	25C9.4LB	25C9.6E	25C10.5E	25C10.6E
<b>EXTERIOR</b>					
Lightweight Two Piece Fiberglass Exterior Shell	S	S	S	S	S
1 1/2" High Density EPS Insulation (R8)	S	S	S	S	S
Radius Corner Safety Glass Windows (c/w Screens)	S	S	S	S	S
Folding Assist Handle	S	S	S	S	S
Molded Propane Tank Storage Compartment	S	S	S	S	S
Molded Fiberglass Basement Storage Compartment	S	S	S	S	S
Sewer Hose Storage Compartment	S	S	S	S	S
Aluminum Rear Bumper	S	N/A	N/A	S	S
Radius Corner Compartment Doors	S	S	S	S	S
Cab Thru Window	S	S	S	S	S
Radius Corner Entry Door (c/w Deadbolt Lock and Gas Strut)	S	S	S	S	S
Blocking for Rear Awning	S	S	S	S	S
Blocking for Roof Rack & Ladder	S	S	S	S	S
Mechanical Jacks (Powder Coated)	S	S	S	S	S
Step Bracket	S	S	S	S	S
<b>INTERIOR</b>					
Washable Vinyl Wall Paneling	S	S	S	S	S
Marine Quality Fabric Headliner	S	S	S	S	S
Face Framed Double Screwed Oak Styled Cabinets	S	S	S	S	S
Queen Size Bed with Foam Mattress (60" x 74")	S	S	S	S	S
42" Headroom in Bunk	S	S	S	S	S
Shirt Closet in Bunk Area	S	S	S	S	S
Day/Night Shades	S	S	S	S	S
Bedside Storage Boxes	S	S	S	S	S
TV Shelf	S	S	S	S	S
Venetian Blinds in Galley	S	S	S	S	S
<b>KITCHEN AND APPLIANCES</b>					
3-Burner Cooktop	S	S	S	S	S
Electronic Ignition 30,000 BTU Ducted Forced Air Furnace	S	S	S	S	S
Fluorescent Light in Galley	S	S	S	S	S
12-Volt Rangehood (c/w Monitor Panel)	S	S	S	S	S
Stainless Steel Sink	Double	Double	Double	Double	Double
Cutting Board	S	S	S	S	S
Single Lever Faucet	S	S	S	S	S
20 LB Propane Tank (c/w OPD Valve)	S	S	S	S	S
2-Way 6 Cu. Ft. Refrigerator	S	S	S	S	S
<b>ELECTRICAL</b>					
Electrical 120-VAC/30-Amp Service	S	S	S	S	S
45-Amp DC Power Converter (c/w Battery Charger)	S	S	S	S	S
Prewire for Roof Air and Microwave	S	S	S	S	S
Power Fan in Bathroom	S	S	S	S	S
Stereo Prewire (c/w 2 Speakers & Antenna)	S	S	S	S	S
Battery Compartment	S	S	S	S	S
Exterior Lights (3)	S	S	S	S	S
<b>PLUMBING</b>					
City Water Hookup	S	S	S	S	S
12- Volt Demand Water Pump System	S	S	S	S	S
Molded Fiberglass Shower Enclosure (c/w Vanity and Medicine Cabinet)	S	S	S	S	S
Water Heater By-Pass System	S	S	S	S	S
RV Anti-Freeze Pickup System	S	S	S	S	S
Foot-flush RV Toilet	S	S	S	S	S
Electronic Ignition Hot Water Heater (6 Gallon)	S	S	S	S	S
Enclosed Heated & Insulated Holding Tanks	S	S	S	S	S
<b>SAFETY</b>					
MVSS 302 Fire Rated Automotive Fabric	S	S	S	S	S
Smoke Detector	S	S	S	S	S
Propane Detector	S	S	S	S	S
Fire Extinguisher	S	S	S	S	S
Carbon Monoxide Detector	S	S	S	S	S
Egress Window	S	S	S	S	S





OPTIONS	25C9.4 Shortbox				
	and 25C9.4E	25C9.4LB	25C9.6E	25C10.5E	25C10.6E
A & E Box Awning	8'	8'	8'	10'	10'
AC Roof — 11,000 BTU	0	0	0	0	0
Awning Rail	0	0	0	0	0
Battery Disconnect (Electronic)	0	0	0	0	0
Black Tank Rinse System	0	0	0	0	0
Camper 5-Step	0	0	0	0	0
Camper 6-Step	0	0	0	0	0
Electric Jacks, Motors & Remote	0	0	0	0	0
Exterior Shower (c/w Winterizing Valves)	0	0	0	0	0
Fantastic Fan, Bathroom (Exhaust)	0	0	0	0	0
Fantastic Fan, Bunk (Exhaust)	0	0	0	0	0
Fantastic Fan, Galley (Exhaust)	0	0	0	0	0
Generator Ready Package	0	N/A	N/A	0	0
Generator, Onan (2.5kw. Propane — Requires Gen. Ready Pkg.)	0	N/A	N/A	0	0
Jack Brackets (Dually)	0	0	0	0	0
LCD TV (Includes LCD TV Prep. Package)	0	0	0	0	0
LCD TV Prep. Package (c/w Swing Arm Bracket)	0	0	0	0	0
Microwave Oven (.7 Cu Ft.)	0	0	0	0	0
Optical Rear Vision Door	0	0	0	0	0
Oven (c/w 3-Burner Cooktop)	POP	POP	POP	POP	POP
Privacy Curtain	0	0	0	0	0
Rear Door Awning (54")	0	0	0	0	0
Rear View Camera System (Color)	0	0	0	0	0
Roll Away Shower Door	N/A	N/A	N/A	N/A	0
Skylight (c/w Pleated Shade)	0	0	0	0	0
Skylight in Shower	N/A	N/A	N/A	N/A	0
Solar Energy System (RV50)	0	0	0	0	0
Stereo AM/FM — Cassette/CD Changer	0	0	0	0	0
Stereo AM/FM — CD/DVD Player	0	0	0	0	0
Stereo AM/FM - CD Player	0	0	0	0	0
Solar Reflective Thermal Pane Windows	0	0	0	0	0
Twin Beds (30" x 74")	0	0	0	0	0
<b>PREFERRED OPTION PACKAGE</b>					
Auto Changeover (Propane Regulator)	Incl.	Incl.	Incl.	Incl.	Incl.
Bifold Range Cover	Incl.	Incl.	Incl.	Incl.	Incl.
Dual Propane Tanks (20 LB ea.)	Incl.	Incl.	Incl.	Incl.	Incl.
Electric Jack, Prewire	Incl.	Incl.	Incl.	Incl.	Incl.
Hidden TV Antenna (c/w TV Booster, Satellite Ready, Cable Hook-up)	Incl.	Incl.	Incl.	Incl.	Incl.
Oven (c/w 3-Burner Cooktop)	Incl.	Incl.	Incl.	Incl.	Incl.
Rack & Ladder	Incl.	Incl.	Incl.	Incl.	Incl.
Spring Filled Mattress (Exchange)	Incl.	Incl.	Incl.	Incl.	Incl.

S = Standard 0 = Optional POP = Preferred Opt. Package



A



B



C

- A. 15C8.2 short box
- B. 15C9.5
- C. 15C9.3



# 1500 SERIES TRUCK CAMPER

Bigfoot 1500 Series Truck Campers are the lightest and most aerodynamic of the Bigfoot Truck Camper lineup.

Featuring Bigfoot's proven two-piece molded fiberglass construction, these models are insulated using a high-density 1" polystyrene insulation, and come equipped with an impressive list of standard features, high quality appliances, and three stylish interior decors to choose from.

With four models, available in both long or short box configurations, there's a Bigfoot 1500 Series Truck Camper to fit your RV lifestyle requirements.







- A. 9.3 short box galley  
B. 9.5FS dinette  
C. 9.5FS galley  
D. 15c9.3 dinette

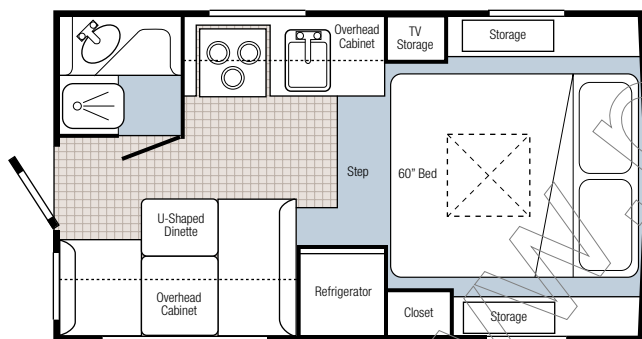


# SPECIFICATIONS

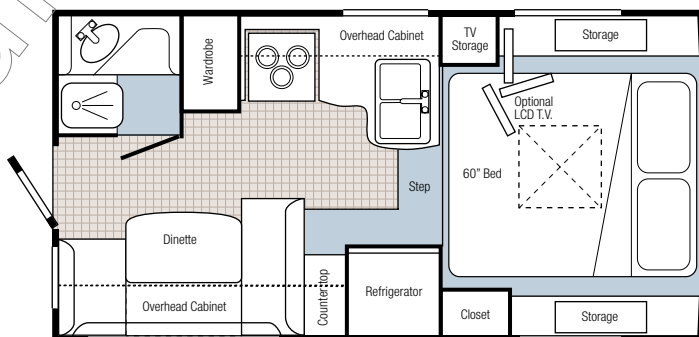
	Units		15C8.2 Short Box		15C9.3 Short Box		15C9.5 FS & FR	
Overall Length	ft/in	mtr	15'-1"	4.59	16'-6"	5.03	16'-6"	5.03
Overall Height*	ft/in	mtr	7'-3"	2.21	7'-5"	2.26	7'-5"	2.26
Overall Width	ft/in	mtr	7'-11"	2.41	7'-11"	2.41	7'-11"	2.41
Interior Headroom	ft/in	mtr	6'-7"	2.03	6'-7"	2.03	6'-7"	2.03
Base Dry Weight	lbs	kg	1790	812	2100	953	1970	894
Fresh Water	US gal.	litres	32	122	32	122	32	122
Grey Water	US gal.	litres	11	42	11	42	11	42
Black Water	US gal.	litres	14	53	14	53	14	53
LPG Capacity	lbs	litres	20	9	20	9	20	9
Water Heater	US gal.	litres	6	23	6	23	6	23
Furnace c/w Elec. Ign.	BTU		16,000		16,000		16,000	
Refrigerator 2-Way	cu. ft.	litres	4	113	4	113	4	113

\* Incl. Truck Bed to Fridge Vent

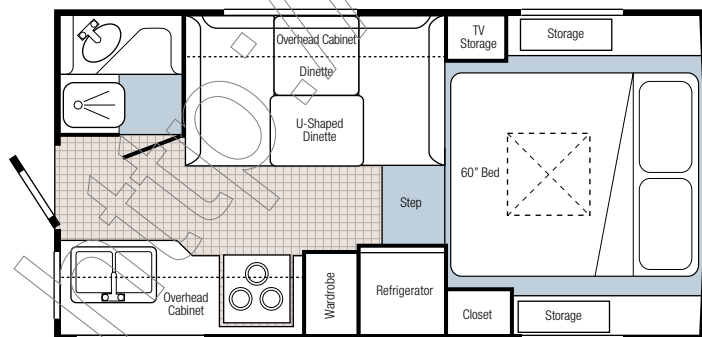
## FLOOR PLANS



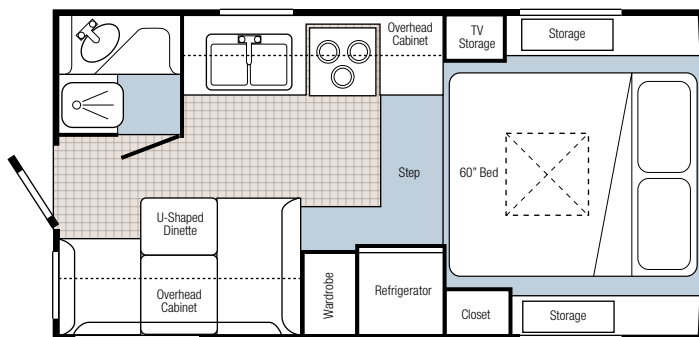
15C8.2 short box



15C9.3 short box



15C9.5FS



15C9.5FR

# 1500 SERIES TR

## FEATURES & OPTIONS

	15C8.2FR	15C9.3	15C9.5FR	15C9.5FS
<b>EXTERIOR</b>				
Lightweight Two Piece Fiberglass Exterior Shell	S	S	S	S
1" High Density EPS Insulation (R6)	S	S	S	S
Radius Corner Safety Glass Windows	S	S	S	S
Folding Assist Handle	S	S	S	S
Molded Propane Tank Storage Compartment	S	S	S	S
Sewer Hose Storage Compartment	S	S	S	S
Aluminum Rear Bumper	N/A	S	N/A	N/A
Radius Corner Compartment Doors	S	S	S	S
Cab Thru Window	S	S	S	S
Radius Corner Entry Door (c/w Deadbolt Lock and Gas Strut)	S	S	S	S
Blocking for Rear Awning	S	S	S	S
Step Bracket	S	S	S	S
Rack & Ladder	S	S	S	S
<b>INTERIOR</b>				
Washable Vinyl Wall Paneling	S	S	S	S
Marine Quality Fabric Headliner	S	S	S	S
Face Framed Double Screwed Oak Styled Cabinets	S	S	S	S
Queen Size Bed with Foam Mattress (60" x 74")	S	S	S	S
36" Headroom in Bunk	S	S	S	S
Shirt Closet in Bunk Area	S	S	S	S
Bedside Storage Boxes	S	S	S	S
TV Shelf	S	S	S	S
Venetian Blinds in Galley	S	S	S	S
<b>KITCHEN AND APPLIANCES</b>				
3-Burner Cooktop	S	S	S	S
Electronic Ignition 16,000 BTU Ducted Forced Air Furnace	S	S	S	S
Fluorescent Light in Galley	S	S	S	S
12-Volt Rangehood (c/w Monitor Panel)	S	S	S	S
Stainless Steel Sink	Single	Double	Double	Double
Cutting Board	S	S	S	S
Single Lever Faucet	S	S	S	S
20 LB Propane Tank (c/w OPD Valve)	S	S	S	S
2-Way 4 Cu. Ft. Refrigerator	S	S	S	S
<b>ELECTRICAL</b>				
Electrical 120-VAC/30-Amp Service	S	S	S	S
45-Amp DC Power Converter (c/w Battery Charger)	S	S	S	S
Prewire for Roof Air and Microwave	S	S	S	S
Power Fan in Bathroom	S	S	S	S
Stereo Prewire (c/w 2 Speakers & Antenna)	S	S	S	S
Battery Ready (c/w Battery Box)	S	S	S	S
Exterior Light	S	S	S	S
<b>PLUMBING</b>				
City Water Hookup	S	S	S	S
12-Volt Demand Water Pump System	S	S	S	S
Molded Fiberglass Shower Enclosure (c/w Vanity and Medicine Cabinet)	S	S	S	S
Water Heater Bypass System	S	S	S	S
RV Anti-Freeze Pickup System	S	S	S	S
Foot-flush RV Toilet	S	S	S	S
Hot Water Heater (6 Gallon)	S	S	S	S
Enclosed Holding Tanks	S	S	S	S
<b>SAFETY</b>				
MVSS 302 Fire Rated Automotive Fabric	S	S	S	S
Smoke Detector	S	S	S	S
Propane Detector	S	S	S	S
Fire Extinguisher	S	S	S	S
Carbon Monoxide Detector	S	S	S	S
Escape Hatch	S	S	S	S





# BUCK CAMPERS

OPTIONS	15C8.2FR	15C9.3	15C9.5FR	15C9.5FS
A & E Box Awning (8')	0	0	0	0
AC Roof – 11,000 BTU	0	0	0	0
Auto Changeover (Propane Regulator)	0	0	0	0
Awning Rail	0	0	0	0
Battery Disconnect (Electronic)	0	0	0	0
Black Tank Rise System	0	0	0	0
Camper 4 Step	0	0	0	0
Day/Night Shades (Pleated)	0	0	0	0
Electronic Ignition Hot Water Heater (DSI)	0	0	0	0
Electric Jacks, Motors & Remote	0	0	0	0
Exterior Shower (c/w Winterizing Valves)	0	0	0	0
Fantastic Fan, Bathroom (Exhaust)	0	0	0	0
Fantastic Fan, Galley (Exhaust)	0	0	0	0
LCD TV (Includes LCD TV Prep. Package)	0	0	0	0
LCD TV Prep. Package (c/w Swing Arm Bracket)	0	0	0	0
Lift Kit Assembly (Ford/Dodge Trucks)	0	N/A	N/A	N/A
Microwave Oven (.7 Cu. Ft.)	0	0	0	0
Optical Rear Vision Door	0	0	0	0
Oven (c/w 3-Burner Cooktop)	0	0	0	0
Privacy Curtain	0	0	0	0
Rear Door Awning (54")	0	0	0	0
Rear View Camera System (Color)	0	0	0	0
Rear Window (Single Pane)	0	0	0	0
Rear Window (Thermal Pane)	0	0	0	0
Skylight (c/w Pleated Shade)	0	0	0	0
Solar Energy System (RV50)	0	0	0	0
Spring Filled Mattress (Exchange)	0	0	0	0
Stereo AM/FM – CD/DVD Player	0	0	0	0
Stereo AM/FM – CD Player	0	0	0	0
Twin Beds (30" x 74")	0	0	0	0
Wheel Well Access Door	0	N/A	N/A	N/A
<b>WINTER PACKAGE</b>				
Solar Reflective Thermal Windows	Incl.	Incl.	Incl.	Incl.
Heated & Insulated Holding Tanks	Incl.	Incl.	Incl.	Incl.
Fantastic Fan (Exhaust)	Incl.	Incl.	Incl.	Incl.
<b>PREFERRED OPTION PACKAGE</b>				
Bifold Range Cover	Incl.	Incl.	Incl.	Incl.
Dual Propane Tanks (20 LB ea.)	Incl.	Incl.	Incl.	Incl.
Electric Jack, Prewire	Incl.	Incl.	Incl.	Incl.
Refrigerator Upgrade (2-Way 6 Cu. Ft. )	Incl.	Incl.	Incl.	Incl.
Hidden TV Antenna (c/w TV Booster, Satellite Ready, Cable Hook-up)	Incl.	Incl.	Incl.	Incl.
Mechanical Jacks (Powder Coated)	Incl.	Incl.	Incl.	Incl.

S = Standard 0 = Optional

# 2500 SERIES TRAVEL TRAILERS

Bigfoot 2500 Series Travel Trailers, available in five versatile floor plans to choose from, provide a satisfying and independent way to travel without having to leave behind the comforts and amenities of home.

Bigfoot Travel Trailers feature our proven two-piece molded fiberglass construction and are insulated using a 1½" high-density polystyrene insulation.

High quality designer fabrics decorate the interiors, and all models feature large, radius corner windows that create a feeling of spaciousness, and provide you with an unobstructed view of the great outdoors at your favorite camping spot.

Bigfoot's unique two-piece construction and excellent aerodynamics of the 2500 Series Travel Trailers will allow you to tow them with ease.

A



B



C



- A. model 21FB exterior
- B. 21FB exterior storage
- C. optional exterior speakers
- D. 175G top inset





# S TRAILERS







A



B



C



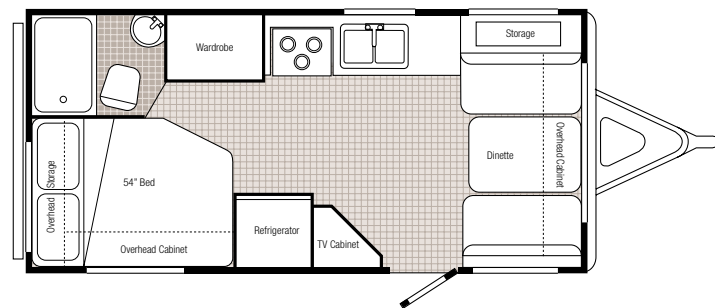
D



E



- A. model B21RB
- B. model B17.5CB
- C. model B21FB
- D. model B17.5CB
- E. model B21FB



25B21RB

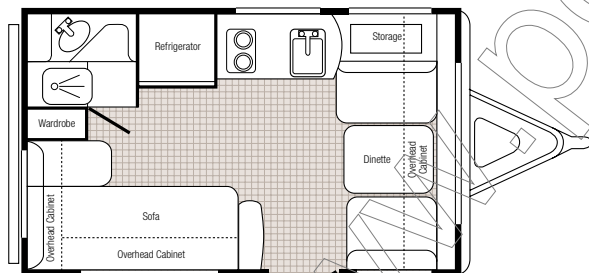


## SPECIFICATIONS

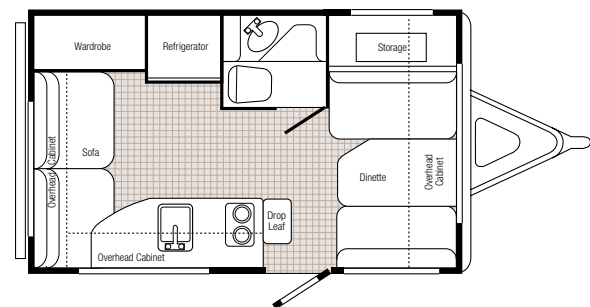
	Units		25B175G		25B175CB		25B21RB		25B21FB		25B25RQ	
Overall Length	ft/in	mtr	17'-5"	5.31	17'-5"	5.31	21'-6"	6.55	21'-6"	6.55	25'-6"	7.77
Overall Height*	ft/in	mtr	8'-8"	2.64	8'-8"	2.64	8'-10"	2.69	8'-10"	2.69	9'-2"	2.79
Overall Width	ft/in	mtr	8'-0"	2.44	8'-0"	2.44	8'-4"	2.54	8'-4"	2.54	8'-4"	2.54
Interior Headroom	ft/in	mtr	6'-4"	1.93	6'-4"	1.93	6'-4"	1.93	6'-4"	1.93	6'-4"	1.93
Base Dry Weight	lbs	kg	2885	1309	2895	1313	3690	1674	3815	1731	4660	2114
Average Hitch Weight	lbs	kg	315	143	315	143	348	158	335	152	610	277
Axle Weight Rating	lbs	kg	1 x 4400	1 x 1996	1 x 4400	1 x 1996	2 x 3500	2 x 1588	2 x 3500	2 x 1588	2 x 3500	2 x 1588
GVWR	lbs	kg	4300	1950	4300	1950	7500	3400	7500	3400	7500	3400
Tires	Size		ST225/75R15									
Fresh Water	US gal.	litres	30	115	30	115	30	114	34	128	45	171
Grey Water	US gal.	litres	21	83	21	83	22	84	27	102	45	171
Black Water	US gal.	litres	21	83	21	83	22	84	22	84	45	171
LPG Capacity	lbs	litres	2 x 20	2 x 9	2 x 20	2 x 9	2 x 20	2 x 9	2 x 20	2 x 9	2 x 20	2 x 9
Water Heater	US gal.	litres	6	23	6	23	6	23	6	23	6	23
Furnace c/w Elec. Ign.	BTU		16,000		16,000		30,000		30,000		30,000	
Refrigerator 2-Way	cu. ft	litres	6	169	6	169	6	169	6	169	6	169

\* To Top of Fridge Vent

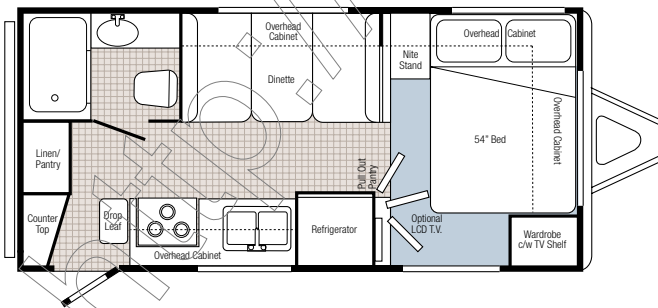
## FLOOR PLANS



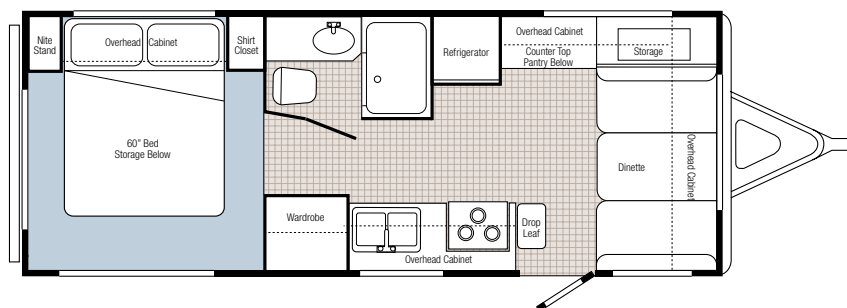
25B175G



25B175CB



25B21FB



25B25RQ

# 2500 SERIES TR

## FEATURES & OPTIONS

	25B175CB	25B175G	25B21FB	25B21RB	25B25RQ
<b>EXTERIOR</b>					
Lightweight Two Piece Fiberglass Exterior Shell	S	S	S	S	S
1 1/2" High Density EPS Insulation (R8)	S	S	S	S	S
Radius Corner Safety Glass Windows	S	S	S	S	S
Folding Assist Handle	S	S	S	S	S
Aluminum Covered Rear Bumper (c/w Sewer Hose Storage)	S	S	S	S	S
Wide Track Axle	Single	Single	Tandem	Tandem	Tandem
Axle Rating	1 x 4400 lbs.	1 x 4400 lbs.	2 x 3500 lbs.	2 x 3500 lbs.	2 x 3500 lbs.
15" Radial Tires with White Spoke Wheels	S	S	S	S	S
Electric Brakes	S	S	S	S	S
Break Away Switch	S	S	S	S	S
Molded Fiberglass Rockguard (c/w Gas Struts)	S	S	S	S	S
Radius Corner Compartment Doors	S	S	S	S	S
Radius Corner Entry Door (c/w Deadbolt Lock and Gas Strut)	S	S	S	S	S
Blocking for Roof Rack & Ladder	S	S	S	S	S
Awning Rail	S	S	S	S	S
Molded Fiberglass Propane Tank Cover	POP	POP	S	S	S
Folding Entry Step	2-Step	2-Step	2-Step	2-Step	3 Step
<b>INTERIOR</b>					
Washable Vinyl Wall Paneling	S	S	S	S	S
Marine Quality Fabric Headliner	S	S	S	S	S
Face Framed Double Screwed Oak Styled Cabinets	S	S	S	S	S
Spring Filled Mattress	N/A	N/A	54" x 74"	54" x 74"	60" x 74"
Day/Night Shades	S	S	S	S	S
Venetian Blinds in Galley	S	S	S	S	S
TV Hook-up	S	S	S	S	S
<b>KITCHEN AND APPLIANCES</b>					
Cooktop	2-Burner	2-Burner	3-Burner	3-Burner	3-Burner
Electronic Ignition Ducted Forced Air Furnace	16,000 BTU	16,000 BTU	30,000 BTU	30,000 BTU	30,000 BTU
Fluorescent Light in Galley	S	S	S	S	S
12-Volt Rangehood (c/w Monitor Panel)	S	S	S	S	S
Stainless Steel Sink	Single	Single	Double	Double	Double
Cutting Board	S	S	S	S	S
Single Lever Faucet	S	S	S	S	S
Dual 20 LB Propane Tanks (c/w OPD Valve)	S	S	S	S	S
2-Way 6 Cu. Ft. Refrigerator	S	S	S	S	S
<b>ELECTRICAL</b>					
Electrical 120-VAC/30-Amp Service	S	S	S	S	S
DC Power Converter (c/w Battery Charger)	45-Amp	45-Amp	45-Amp	45-Amp	60-Amp
Prewire for Roof Air and Microwave	S	S	S	S	S
Power Fan in Bathroom	S	S	S	S	S
Stereo Prewire (c/w 2 speakers & Antenna)	S	S	S	S	S
Battery Ready	S	S	S	S	S
Porch, Hitch and Roadside Lights	S	S	S	S	S
<b>PLUMBING</b>					
City Water Hookup	S	S	S	S	S
12-Volt Demand Water Pump System	S	S	S	S	S
Molded Fiberglass Shower Enclosure (c/w Vanity and Medicine Cabinet)	S	S	S	S	S
Water Heater Bypass System	S	S	S	S	S
RV Anti-Freeze Pickup System	S	S	S	S	S
Foot-flush RV Toilet	S	S	S	S	S
Enclosed Heated & Insulated Holding Tanks	0	0	S	S	S
Electronic Ignition Hot Water Heater (6 Gallon)	S	S	S	S	S
<b>SAFETY</b>					
MVSS 302 Fire Rated Automotive Fabric	S	S	S	S	S
Smoke Detector	S	S	S	S	S
Propane Detector	S	S	S	S	S
Fire Extinguisher	S	S	S	S	S
Egress Window	S	S	S	S	S





OPTIONS	25B17.5CB	25B17.5G	25B21FB	25B21RB	25B25RQ
AC Roof – 11,000 BTU	0	0	0	0	0
Battery Disconnect (Electronic)	0	0	0	0	0
Bedroom Décor Package	N/A	N/A	N/A	N/A	0
Black Tank Rinse System	0	0	0	0	0
Bunk Beds	N/A	N/A	0	0	0
Chrome Wheels	0	0	0	0	0
Continental Tire Kit	0	0	0	0	0
Dual 30 LB Propane Tanks Upgrade	0	0	POP	POP	POP
Exterior Stereo Speakers	N/A	N/A	0	0	0
Exterior Shower (c/w Winterizing Valves)	0	0	POP	POP	POP
Fantastic Fan, Bathroom (Exhaust)	0	0	0	0	0
Fantastic Fan, Bedroom	N/A	N/A	2-Way	Exhaust	2-Way
Fantastic Fan, Galley (Exhaust)	0	0	0	0	0
Heated & Enclosed Holding Tanks	0	0	S	S	S
LCD TV (Includes LCD TV Prep. Package)	0	0	0	0	0
LCD TV Prep. Package (c/w Swing Arm Bracket)	0	0	0	0	0
Microwave Oven.	0.7 Cu. Ft.	0.7 Cu. Ft.	1.0 Cu. Ft.	1.0 Cu. Ft.	1.0 Cu. Ft.
Oven (c/w 3-Burner Cook Top & Bifold Cover)	0	0	POP	POP	POP
Painted Skirts	0	0	0	0	0
Privacy Curtain	0	N/A	0	0	N/A
Rack and Ladder	0	0	0	0	0
Raised Oak Fridge Inserts	N/A	N/A	N/A	N/A	0
Roll Away Shower Door	N/A	N/A	0	0	0
Self Storing Awning	10'	10'	14'	14'	18'
Skylight (c/w Pleated Shade)	0	0	0	0	0
Skylight in Shower	N/A	N/A	N/A	N/A	0
Solar Energy System	0	0	0	0	0
Sofa In Lieu of Dinette	N/A	N/A	0	0	0
Stabilizer Jacks (Front & Rear)	0	0	0	0	0
Stabilizer Jacks (Rear Only)	0	0	0	0	0
Stereo AM/FM – Cassette/CD Changer	N/A	N/A	0	0	0
Stereo AM/FM – CD/DVD Player	0	0	0	0	0
Stereo AM/FM – CD Player	0	0	0	0	0
Solar Reflective Thermal Pane Windows	0	0	0	0	0
Twin Beds (30" x 74")	N/A	N/A	N/A	N/A	0
<b>PREFERRED OPTION PACKAGE</b>					
Auto Change Over (Propane Regulator)	Incl.	Incl.	Incl.	Incl.	Incl.
Bifold Range Cover	N/A	N/A	Incl.	Incl.	Incl.
Dual Propane Tanks (30 LB ea.)	N/A	N/A	Incl.	Incl.	Incl.
Exterior Shower (c/w Winterizing Valves)	N/A	N/A	Incl.	Incl.	Incl.
Fiberglass Propane Tank Cover	Incl.	Incl.	S	S	S
Hidden TV Antenna (c/w TV Booster, Satellite Ready, Cable Hook-up)	Incl.	Incl.	Incl.	Incl.	Incl.
Outside Access Doors	Incl.	Incl.	S	S	S
Oven (c/w 3-Burner Cooktop & Bifold Cover)	N/A	N/A	Incl.	Incl.	Incl.
Spare Tire and Carrier	Incl.	Incl.	Incl.	Incl.	Incl.

S = Standard 0 = Optional POP = Preferred Opt. Package



### BIGFOOT WARRANTY

Bigfoot Industries provides a limited warranty on all Bigfoot products. Bigfoot Industries offers a five-year limited structural warranty on all 3000 Series Campers, and three-year limited structural integrity warranty on all 1500 and 2500 Series Campers and Travel Trailers.

Appliance warranties vary and are set by the respective manufacturer.

Please contact your dealer for complete details regarding warranty policies.

The information contained herein is as accurate as possible at the time of publication. Subsequent refinements and improvements may be evident in the actual products. All liquid capacities are approximate and dimensions are nominal. Some equipment and features illustrated may be optional, or for presentation purpose only.

This brochure may not be used for contractual purposes. Bigfoot Industries reserves the right to improve or modify its products without prior written notice.

Contact your dealer for details.

### BIGFOOT INDUSTRIES

4114 Crozier Road, Armstrong  
British Columbia, Canada V0E 1B6  
Phone: 250 546-2177  
Web: [www.bigfootrv.com](http://www.bigfootrv.com) or  
[www.bigfootowners.com](http://www.bigfootowners.com)



**YOUR LOCAL BIGFOOT DEALER IS:**