

# The Great Escape

Leave your cares behind and explore the big, beautiful world out there in the luxurious and tastefully appointed Embassy, which promises even more of the comforts of home in 2009.

No matter how far afield you travel, you'll feel indulged amidst amenities like reclining optima leather seats, wood-framed refreshment center, standard LCD TV and home theater center with CD and DVD. It's powered by a Ford 6.8L V-10 Triton engine and constructed to Triple E's exacting standards. So get behind the wheel and relax. New worlds beckon.



A35FW in Encore Décor



Everything the traveling gourmet needs is at their fingertips in the elegant, fully equipped galley. The Glamour Package (shown) features tile-look laminate floors and Corian countertops, as well as solid wood drawers and door fronts on all the cabinets. To complement the suite of appliances, there is an optional convection microwave oven (available in A30G model only).

You'll awake ready and rested in the Embassy's stylishly decorated bedroom, which features bedspread, pillow shams and decorator toss cushions in a selection of four distinctive décors. The large wardrobe features a sliding door that creates a separate dressing area; or, if you prefer, bunk beds replace the wardrobe in the A35FB.



A35 Series in Encore Décor featuring glamour package

## STANDARDS AND OPTIONS

	A30G	A35FB	A35FW
<b>CHASSIS AND SUSPENSION</b>			
Airbag Assist Rear Suspension	S	S	S
Block Heater	S	S	S
Chassis - Ford V-10, 6.8L V10 Triton - 18,000 lb. GVW - 190" Wheelbase	S	-	-
Chassis - Ford V-10, 6.8L V10 Triton - 20,500 lb. GVW - 228" Wheelbase	-	S	S
Concealed Locking Fuel Filler	S	S	S
Hitch - Trailer Hitch Receiver w/ wiring and plug - Class III 500/5000 lb	S	S	S
Transmission - Five Speed Automatic c/w Overdrive w/ Transmission Cooler	S	S	S
Wheel Simulators	S	S	S
<b>DRIVERS AREA CONVENIENCES</b>			
Air Conditioner - Chassis	S	S	S
Cameras - Side Turn Cameras	0	0	0
Cruise Control and Tilt Steering Wheel	S	S	S
Mirrors - Heated Remote Mirrors	S	S	S
Power Seat - Six Way Power Driver Seat	0	0	0
Rear View Camera/Monitor - B&W	S	S	S
Seats - UltraLeather / Ultratrim Reclining Driver and Passenger Swivel Bucket Seats	S	S	S
Switch - Battery Boost Switch	S	S	S
Switch - Battery Selector Switch for Radio	S	S	S
Wipers - Wet Arm Windshield Wipers c/w Intermittent Function	S	S	S
<b>VEHICULAR</b>			
Alternator - 130 Amp	S	S	S
Jacks - HWH Hydraulic Leveling Jacks with Joystick Control	S	S	S
Light - High Mounted Spotlight - LED Long Life	S	S	S
Lights - Halogen Automotive Driving Lights	S	S	S
Undercoating - Automotive Type	S	S	S
<b>CONSTRUCTION</b>			
Baggage Doors - Aluminum Baggage Doors with Gas Struts and Slam Latch	S	S	S
Floor - Vacuum Bonded Insulated Steel Framed Floor Construction	S	S	S
Galvanized Luggage Compartments with Cargo Lining	S	S	S
Gelcoat Fiberglass Front & Rear Masks	S	S	S
Steel Cab Floor, Firewall and Dash Structure	S	S	S
Vacuum Bonded Aluminum Framed Insulated Sidewall with Thermal Break	S	S	S
Vacuum Bonded Aluminum Framed Insulated Roof Construction	S	S	S
GelCoat Vetrolite Fiberglass Sidewalls	S	S	S
Roof - Domed Kemlite FRP Flexroof	S	S	S
Windows - Tinted Radius Corner Thermal Pane Windows	S	S	S

**09** New for 2009    **S** Standard    **0** Option

	A30G	A35FB	A35FW
<b>EXTERIOR</b>			
Diamondshield® Paint Protection Film on Front End	0	0	0
Door - Screened Entry Door c/w Integral Deadbolt Lock	S	S	S
Exterior Assist Handle - Monogrammed	S	S	S
Full Paint Exterior (also upgrades Patio Awning to A&E Two Step with Black Hardware and upgrades Slide Toppers to Elite with Metal Weathershield)	0	0	0
Ladder - Exterior	S	S	S
Painted Skirts	S	S	S
Step - Electric Entry	S	S	S
<b>INTERIOR</b>			
Blind - Venetian Blind in Galley	S	S	S
Ceiling - Flat with Padded Vinyl Headliner	S	S	S
Detectors - Electronic Smoke, LP and CO	S	S	S
Doors - Raised Solid Cherry Cabinet Doors	S	S	S
Drawers - Full Extension Ball Bearing Drawer Tracks	S	S	S
Flooring - Carpet in Living Area (as per Floorplan w/ Standard Vinyl Flooring only)	0	0	0
Flooring - Vinyl in Living Area, Galley and Lavatory, and Carpet in Bedroom Areas	S	S	S
Shades - Day/Night Pleated Shades	S	S	S
Slide Out - Electric Slide Out System in Bedroom	-	S	S
Slide Out - HWH Hydraulic Slide Out System in Living Area	S	S	S
<b>FURNITURE</b>			
Booth Dinette - w/ Steel Framing for Seat Belts w/ Laminate Top and Solid Cherry Edging	S	S	S
Cabinet - Refreshment Center	-	0	0
Chair - UltraLeather / Ultratrim Captain's Chair on Passenger Side	-	S	S
<b>09</b> Flip Table - Cherry	-	S	S
Hide-A-Bed - Cloth	-	S	S
Mattress - Air Coil Mattress Upgrade on Hide-a-Bed (c/w 110V Air Pump)	-	0	0
Sofa - Cloth Jackknife Sofa w/Bayonet Arms	S	-	-
<b>GALLEY</b>			
Bi-fold Range Cover	S	S	S
Convection Microwave - OTR c/w Light and 110V Vent Fan w/ Cooktop and Drawers ILO Oven	0	-	-
<b>09</b> Countertop - Laminate Counter with Solid Cherry Edge w/ Acrylic Sink and Matching Backsplash	S	S	S
Cutting Board / Sink Cover	S	S	S
Faucet - Brushed Nickel Galley Faucet with Pull out Sprayer	S	S	S
Microwave - OTR c/w Light and Vent Fan	S	-	-
Microwave Oven	-	S	S
Pantry - Pull Out	S	S	S
Range - Three Burner Cook Top w/ High Output Burner and 22" Oven	S	S	S
Range Hood - w/ light	-	S	S
Refrigerator - Dometic LP/Electric 9 Cu. Ft. w/ Temp Control	S	S	S

## STANDARDS AND OPTIONS

	A30G	A35FB	A35FW
<b>LAVATORY</b>			
Shower - Neo Angle Shower with Glass Doors	S	S	S
<b>09</b> Sink - Acrylic Sink in Laminate Counter with Laminate Edging	S	S	S
Skylight - Residential Dual Pane Neo Angle in Shower	S	S	S
Toilet - Sealand Traveller Lite w/ Sprayer - China - Foot Flush	S	S	S
Window - in Toilet Room	S	S	S
<b>BEDROOM</b>			
Bedspread - Decorative Bed Spread and Throw Pillows	S	S	S
Bunk Beds - 28" x 74"	-	S	-
Headboard - Fabric Wrapped Deluxe Headboard	S	-	-
Make Up Table in Bedroom	-	S	S
Mattress - Innerspring 60" X 74"	S	S	S
Pillows - 2 Sleeping Pillows In Bedroom	S	S	S
Shades - Day/Night Pleated c/w Blackout	S	S	S
Sliding Bed with Bunks	-	S	-
Stool - for Make up Table	-	0	0
Wardrobe and Two Drawers In Bedroom Slide	-	-	S
<b>ENTERTAINMENT</b>			
CD Changer - 10 Stack CD Changer	0	0	0
Radio Monoplex System - Switching for Rear Bedroom Speakers	S	S	S
Satellite Dish - Explorer Dish for Star Choice - Automatic Acquisition	0	0	0
Satellite Dish - Motosat 18" Executive w/ DVB Automatic Acquisition and Identification	0	0	0
Satellite Dish - Winegard with Electronic Elevation Sensor	0	0	0
Satellite Radio Prewire - including Satellite Antenna (Subscription not Included)	0	0	0
Stereo - AM/FM/CD/MP3 Sirius Ready Player in Dash w/ Wireless Remote and Auxiliary Input (Mid Model Year)	S	S	S
Stereo - AM/FM/DVD/CD/Tuner Home Theater with Roof Mounted Speakers	S	S	S
Telephone and Cable TV Hook Up - Exterior	S	S	S
<b>09</b> TV - 12V DC 19" LCD With Remote In Bedroom	0	0	0
<b>09</b> TV - 19" 12V LCD in Bunk Area w/ Prewire for Gaming (See Floorplan for Location)	-	0	-
<b>09</b> TV - 26" LCD TV in Front Overhead	S	S	S
TV Antenna - RoofTop Retractable c/w Booster	S	S	S
<b>HEATING VENTILATING AND AIR CONDITIONING</b>			
Air Conditioner - Centrally Ducted 13,500 BTU w/ Heat Strip and Remote Ducted Return Air	S	S	S
Air Conditioner - Dual Ducted 2 x 13,500 Roof Air w/ Selector Switch w/ Remote Return Air (Note: Front AC Upgraded to 15,000 BTU in CVP)	-	0	0
Fan - Reversible Fantastic Thermostatically Controlled Ceiling Fan (Bedroom)	0	0	0
Furnace - Forced Air Furnace - 35,000 BTU	S	S	S
Vent - 12 Volt Power Roof Exhaust in Lavatory	S	S	S
Vent - Manual Screened Roof Vent in Bedroom	S	S	S
<b>ELECTRICAL</b>			
30 Amp Electrical Service	S	S	S
Batteries - Two - 6 Volt Deep Cycle Auxiliary	S	S	S

	A30G	A35FB	A35FW
<b>ELECTRICAL (con't)</b>			
Battery Tray - Coach Batteries on Slide Out Tray	S	S	S
BIRD - Bi Directional Isolator Relay Delay Battery Charging	S	S	S
Converter - 120Volt/12 Volt/55 Amp c/w Charger and Auto Changeover Switch	S	S	S
Generator - 4.0 KW Onan MicroQuiet	S	S	S
Plug - 12V Power Plug in Dash	S	S	S
Switch - Coach Battery Disconnect	S	S	S
<b>PLUMBING AND LP SYSTEMS</b>			
Exterior Shower with Shut off Valves for Winterizing	S	S	S
Roughed in Plumbing for Washer/Dryer	-	S	S
Water Filter - Faucet in Galley	S	S	S
Water Heater - 6 USG Electronic Ignition LP/Electric/Motoraid	S	S	S
Water Heater Bypass Valve	S	S	S
<b>SYSTEMS</b>			
Washer/Dryer (vented)	-	0	0
<b>AWNINGS</b>			
Awning Package includes:	S	S	S
• A&E 9000 Acrylic Patio Awning w/ Aluminum Weather Shield (Length Shown)	16	14	14
• Weathershield Equipped A&E Elite Slide Topper (Number of Awnings Shown)	1	2	2
<b>CERTIFICATION</b>			
Factory PDI	0	0	0
<b>SPECIAL OPTION PACKAGE(S)</b>			
XL PACKAGE INCLUDES:	S	S	S
• Holding Tanks - Enclosed, Insulated and Heated			
• Light Package in Baggage Compartment			
• Rear Auxiliary Automotive Heater			
• Tinted Thermal Pane Windows			
<b>CUSTOMER VALUE PACKAGE (Mandatory Option)</b>			
	M	M	M
Air Conditioner - 15,000 BTU with Heat Strip (Dual Roof Air Option will be 1 x 15,000 and 1 x 13,500 BTU AC's)			
CB Antenna - includes Coax Lead in under Dash			
Fan - Reversible Thermostatically Controlled Fantastic Fan in Galley or Living Area ILO Manual Vent			
Fans - Chrome Cockpit Ventilating with Dash Switch			
<b>09</b> Mattress - Upgrade Mattress in Hide-A-Bed to Include Air Coil Mattress			
Pillows - Coordinated Pillows For Living Area			
Prewire - Satellite Dish (with 12V Power, Ground, RG-6 Coax and Fish Wire) and Switch Box			
<b>09</b> Refrigerator Inserts - Cherry Framed Raised Panel Fridge Inserts			
Rust Protection			
<b>INTERIOR GLAMOUR PACKAGE</b>			
	-	0	0
Countertop - Solid Surface Counter in Galley with Stainless Steel Undermount Sink and Solid Surface Bi Fold Range Cover			
Fluorescent Lighting in Aisle in Living Area			
Lavatory - Solid Surface Edging on Lavatory Counter			
Tile Look Laminate Floor Upgrade ILO Vinyl in Floorplan (Carpet not available as option with Glamour Package)			



## Exterior Options



Bordeaux



Mayan Gold

Please see your dealer for standard decal/non-full paint package

## Décor



Chestnut Cherry

Captain's Chairs

Sofa

Accent

Bedsread

Carpet



Encore



Veranda



Sun Chasers



Cole Harbour

The booth dinette is one of the most versatile features of the Embassy A35 series. A full slide accommodates the dinette (which affords additional sleeping if needed) and hide-a-bed in coordinating fabrics.



All 3 pictures: A35FW in Encore Décor



Nothing has been overlooked! The A35 series' bedroom comes with optional washer/dryer, hanging wardrobe, make-up center and lots of drawer space. And new for 2009, a built-in LCD TV.



The all-in-one 3-piece bathroom features a neo-angle shower with skylight, large vanity and laminate counter.

EMBASSY 2009



**Two Year Limited Warranty** Triple E is proud to offer a two year limited warranty on structure as well as most major components. Please see your dealer for further details.

**Triple E Recreational Vehicles** P.O. Box 1230, Winkler, Manitoba, Canada R6W 4C4 Telephone: (204) 325-4361 Fax: (204) 325-5241

Triple E Recreational Vehicles are designed and built to meet or surpass CSA-RVIA standards covering electrical services, gas services, plumbing services and vehicular safety. Embassy motorhomes exceed 96" in width. In some states, 96" is the maximum width of vehicles travelling some or all state roads. It is the responsibility of the owner to be familiar with the road usage laws of the states in which you travel. Product improvement is a continuing process at Triple E Recreational Vehicles. We reserve the right to change specifications on any or all products without prior notice; errors and omissions excepted. Triple E Recreational Vehicles is under no obligation to undertake modification to units manufactured prior to changes on specifications. Brochure pictures may be shown with optional equipment. Colours may not be exactly as shown due to the printing process. Please see your dealer for specific colours.

[www.tripleerv.com](http://www.tripleerv.com)

ISO 9001:2000  
REGISTERED



## Specifications

Embassy 2008	A30G	A35FB	A35FW
GVWR-LBS(KG)	18000 (8164)	20700 (9392)	20700 (9392)
UVW-LBS(KG)	15211 (6902)	17191 (7800)	17191 (7800)
NCC-LBS(KG)	2789 (1262)	3509 (1592)	3509 (1592)
WHEELBASE-IN(mm)	190 (4826)	228 (5791)	228 (5791)
LENGTH-FT(mm)	31'1" (9476)	35'11" (10947)	35'11" (10947)
WIDTH-FT(mm)	8'4" (2534)	8'4" (2534)	8'4" (2534)
HEIGHT Incl.A/C-FT(mm)	11'9" (3581)	11'9" (3581)	11'9" (3581)
WATER TANK CAP**-GAL(L)	49 (186)	76 (285)	76 (285)
BLACK HOLDING TANK CAP-GAL(L)	39 (147)	39 (147)	39 (147)
GREY HOLDING TANK CAP-GAL(L)	39 (147)	39 (147)	39 (147)
FUEL CAP-GAL(L)	75 (284)	75 (284)	75 (284)
PROPANE CAP-GAL(L)	25 (95)	25 (95)	25 (95)

\*\*Includes 6 gal. Water Heater  
All Capacities in U.S. Gallons

### GVWR (GROSS VEHICLE WEIGHT RATING)

The maximum permissible weight of this motorhome. The GVWR is equal to or greater than the sum of the unloaded vehicle weight (UVW) plus the net carrying capacity (NCC).

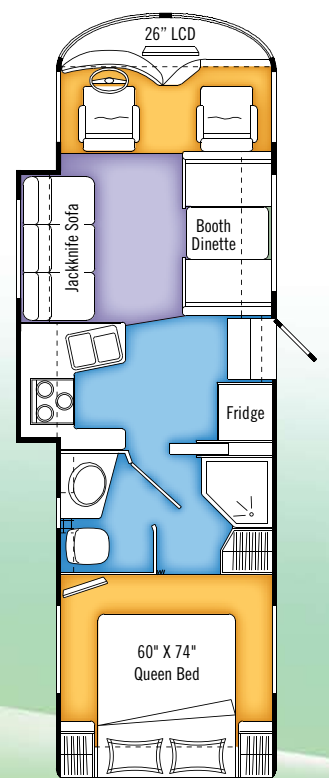
### UVW (UNLOADED VEHICLE WEIGHT)

The weight of the motorhome as built at the factory. The UVW does not include cargo, fresh water, LP gas, factory or dealer installed accessories.

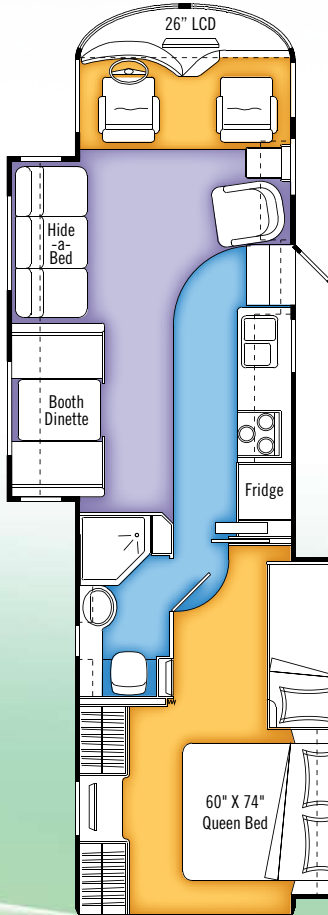
### NCC (NET CARRYING CAPACITY)

The maximum weight of personal belongings, food, fresh water, LP gas, tools, tongue weight of towed vehicle, factory and dealer installed accessories, etc., that can be carried by this motorhome. (NCC is equal to or less than GVWR minus UVW.) Please see your dealer for weights of factory installed options.

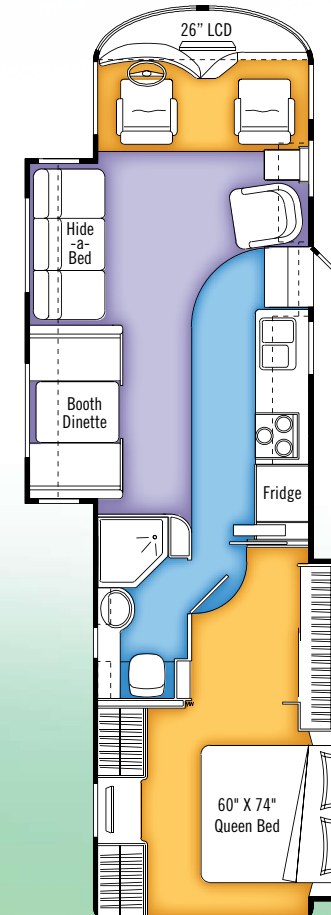
## Floorplans



A30G



A35FB



A35FW

