

ARISTA[®]
2010



HOLIDAY RAMBLER[®]

This is Living[®]



Arista



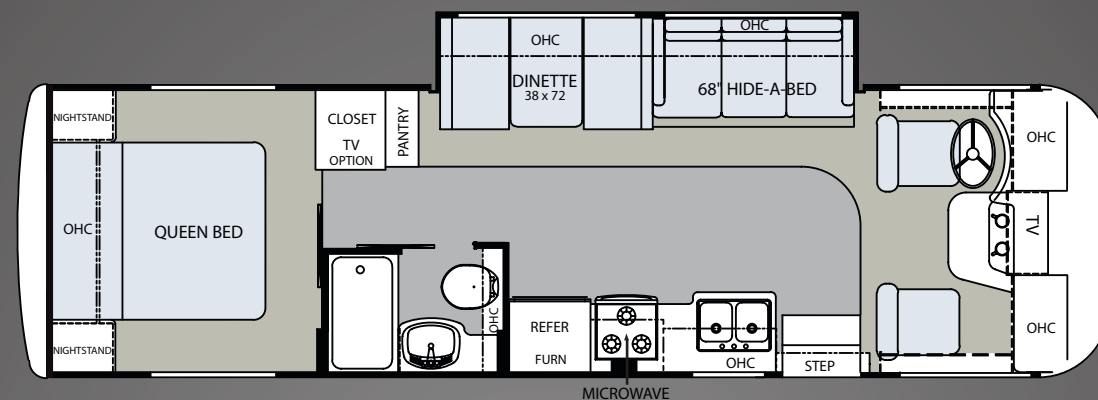
Arista®
2010



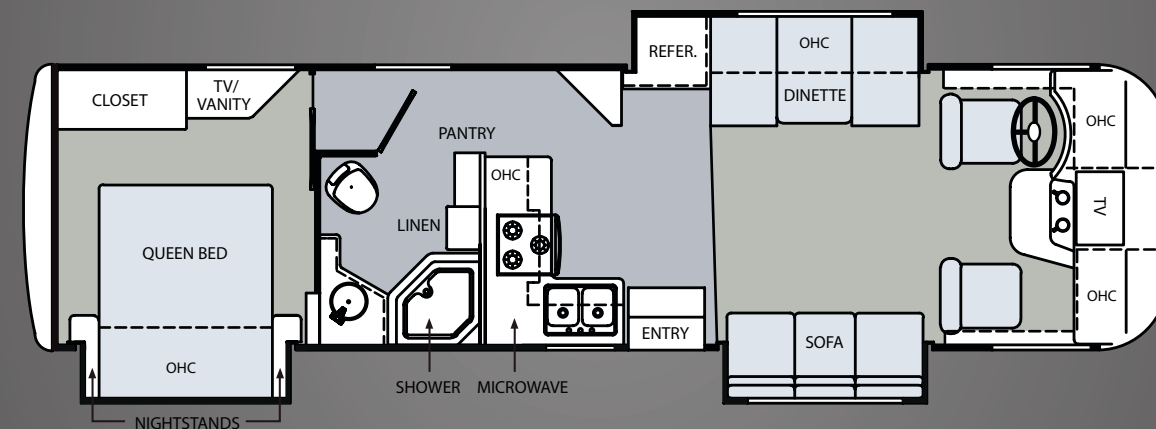
33SDD | Honeycomb II | Newport Cherry II

FLOORPLANS

30PBS



32SBT



CARPET | LINOLEUM

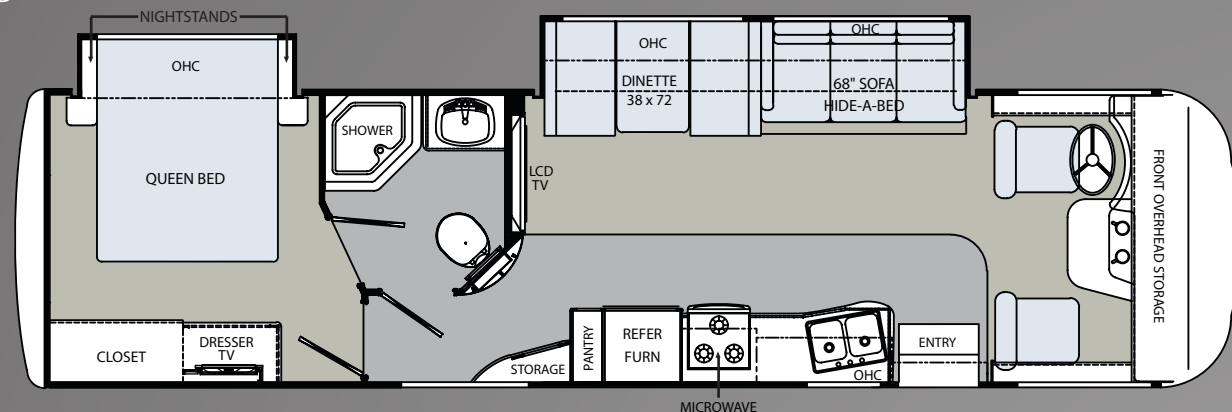
ALL ROADS LEAD TO WWW.HOLIDAYRAMBLER.COM

Wherever the road takes you, you're never more than a click away from your friends at Holiday Rambler. Just go to www.holidayrambler.com for all the latest product news, club dates and destinations, a dealer locator function, and factory tour information. You can also e-mail us directly through the site at any time.

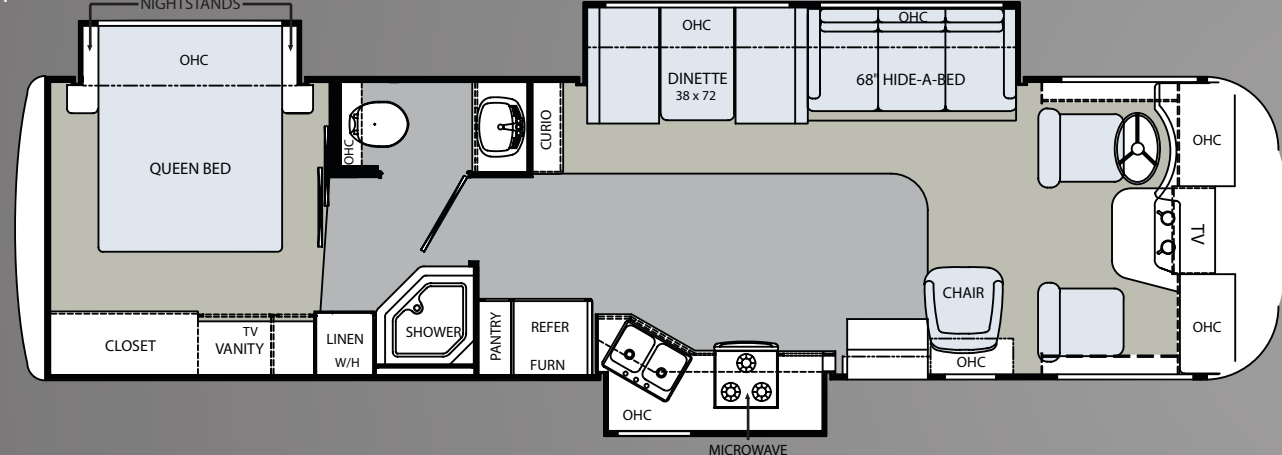




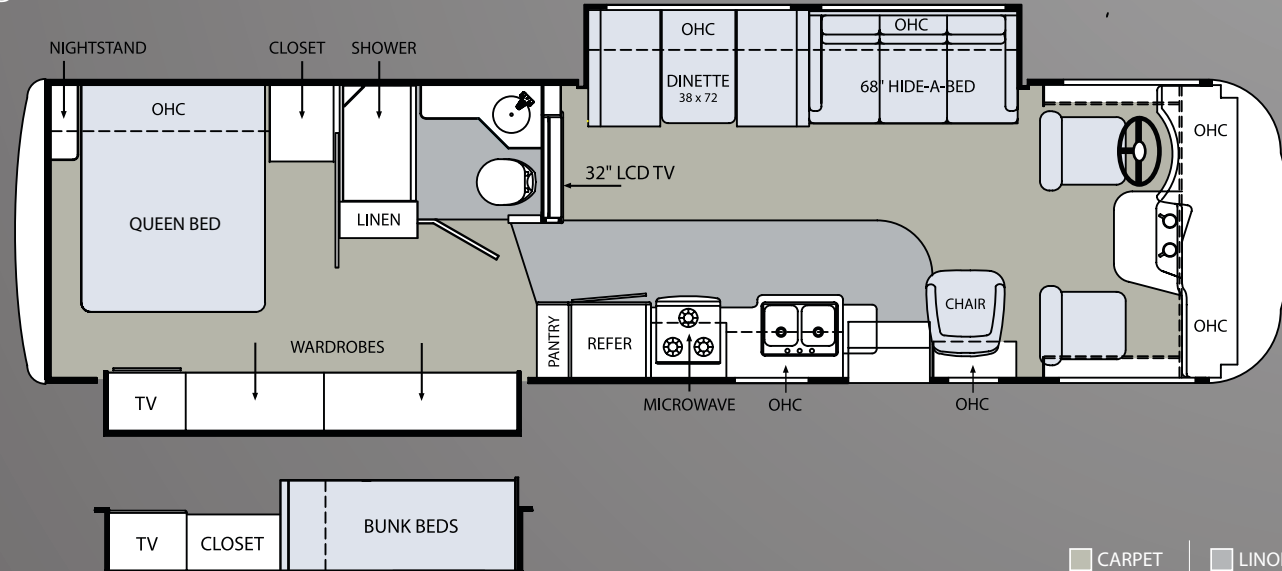
33SDD



34PBT



34SBD



CARPET | LINOLEUM

Due to continuous product improvement, please visit www.holidayrambler.com for the latest in standards and options, specifications, and technical data.

	(OPTIONAL)					
Weights (Workhorse Chassis – 8.1L Vortec V-8) *	30PBS	30PBS	32SBT	33SDD	34PBT	34SBD
Gross Vehicle Weight Rating	16,000	18,000	21,200	21,200	21,200	21,200
Gross Combined Weight Rating	22,000	22,000	26,000	26,000	26,000	26,000
Front Gross Axle Weight Rating	6,500	7,000	7,500	7,500	7,500	7,500
Rear Gross Axle Weight Rating	10,500	12,000	13,500	13,500	13,500	13,500
Weights (Ford Chassis – 6.8L Triton V-10) *						
Gross Vehicle Weight Rating	16,000	18,000	20,500	20,500	20,500	20,500
Gross Combined Weight Rating	26,000	26,000	26,000	26,000	26,000	26,000
Front Gross Axle Weight Rating	6,500	7,000	7,000	7,000	7,000	7,000
Rear Gross Axle Weight Rating	11,000	11,000	13,500	13,500	13,500	13,500
Measurements						
Wheelbase – Workhorse/Ford	190"	190"	208"	208"	228"	228"
Overall Length, Witho der – Workhorse/Ford	31'	31'	32' 8"	33' 11"	34' 8"	34' 8"
Overall Height, Including AC	11' 8"	11' 8"	11' 8"	11' 8"	11' 8"	11' 8"
Interior Height	79"	79"	79"	79"	79"	79"
Interior Width	95.5"	95.5"	95.5"	95.5"	95.5"	95.5"
Exterior Width	99"	99"	99"	99"	99"	99"
Tank Capacities **						
Water Heater (gal.)	6	6	6	6	6	6
Grey Tank (gal.)	40	40	40	40	40	40
Black Tank (gal.)	40	40	40	48	40	40
Fresh Tank (gal.)	50	50	50	50	50	50
LP Tank (lbs./gal.) ***	68/16	68/16	68/16	68/16	68/16	68/16
Fuel – Workhorse/Ford	75	75	75	75	75	75

* Towing capacity is limited by GCWR; your vehicle's towing capacity is the difference between the GCWR and the actual vehicle weight, including all water, fuel, passengers and cargo. Your towed vehicle should be equipped with auxiliary brakes if the weight of the towed vehicle exceeds 1,000 lbs. Consult your owner's manual for further towing information.

** All tank capacities are estimated based upon calculations provided by the tank manufacturers and represent approximate capacities. The actual "usable capacity" may be greater or less than the estimated capacities based upon fabrication and installation of the tanks.

*** Actual filled LP capacity is 80% of listing due to safety shut-off required on tank.

The actual overall length of the recreational vehicle may differ from that indicated in the brochure due to variances in the manufacturing process and/or installed components. The actual length may be greater or less than that indicated. Due to the large variety of options and floorplan arrangements available to our customers, actual weights for each unit can differ significantly. Holiday Rambler provides a weight sticker on each unit we produce which includes that unit's tank capacities and approximate weight. Consult your local Holiday Rambler dealer for unit availability and further information. The information printed in this brochure reflects product design, fabrication, and component parts at the date of printing. The manufacturer reserves the right, at any time, to make changes in product design or material or component specifications as its sole option, without notice. This includes the substitution of components of a different brand or trade name which will result in comparable performance. All information printed in this brochure is subject to change after the date of printing. Some features shown or mentioned in this brochure are optional and may only be available in selected floorplans. Photographs may depict a floorplan option that has been discontinued or is no longer available at the time of your purchase. Photographs may show props or decorations that are not standard equipment. Holiday Rambler, the Holiday Rambler logo and its design, are registered trademarks. Other products and company names are trademarks and/or registered trademarks of their respective holders. While the color of the motorhome's exterior and the interior fabrics depicted in this sales brochure are fair and reasonable depictions, the colors depicted may not be an exact match of the actual colors because of the variances in photo-processing and printing. Due to product improvements, changes during the model year and/or transcription errors that may occur, information represented within this brochure may not be accurate at the time of your purchase. If certain information is significant to your purchasing decision, please confirm the information with your dealer. Component part and appliance manufacturers issue limited warranties covering portions of the recreational vehicle not covered under the Limited Warranties issued by Monaco RV, LLC. To learn specific details regarding warranty coverage, please contact your selling dealership or review the warranty packet inside the recreational vehicle.

BUY LOCALLY. ENJOY EVERYWHERE.

Holiday Rambler strongly encourages our retail customers to purchase from their local dealerships whenever possible. Buying a new Holiday Rambler locally allows a customer to establish a relationship with a dealer close to home and provides convenient service and support from product-trained technicians. On our end, Holiday Rambler will continue to provide our dealer partners and customers with the finest recreational vehicles in the industry.

EXTERIOR

- Fully Welded Tubular Aluminum Roof, Sidewalls and Floor
 - Fully Laminated Roof, Walls and Floors with High-Density Block Foam Insulation
 - Seamless Fiberglass Exterior Sidewalls
 - One-Piece Storage Compartments
 - One-Piece Fiberglass Front and Rear Caps
- One-Piece Fiberglass Interior Engine Cover
 - Rubber Roof
 - Rear Ladder
 - Flush-Mount Radius Baggage Doors
 - Pass-Through Storage Areas
 - Deluxe Exterior Mirrors
 - Double Exterior Electric Entrance Steps
 - Rear Wheel Mud Flaps

OPTIONS

- Partial Paint / Front Mask and Lower Rear Skirt Painted (Smooth Fiberglass Walls w/ Paint Option)
- Deluxe Heated Power Mirrors
- Canadian RV Certification

FORD CHASSIS/ENGINE/SUSPENSION

- 6.8L Triton® V-10, 3-Valve, Gasoline Engine with Sequential Electronic Fuel Injection (SEFI), 362 HP @ 4,750 RPM / 457 lbs./ft. Torque @ 3,250 RPM
 - Engine Displacement: 6.8 Liters, 415 Cubic Inches
 - 5-Speed TorqShift® Automatic Transmission with Overdrive with Tow/Haul Mode
- 130 Amp Alternator
 - Rear Axle Ratio 5.38:1
 - Stainless Steel Wheel Liners with Valve Extenders
 - Rear Multi-Leaf Spring Suspension
 - Automatic Hydraulic Leveling Jacks (N/A 30PBS)
 - Front and Rear Disc, Four-Wheel Anti-Lock Brake System

- Heavy Duty Front Bar w/ Shock Absorbers
- 5,000 lb. Hitch Receiver with Dual Connector 4-Pin or 7-Pin
- One 12V Chassis Battery
- Emergency Start Switch

WORKHORSE CHASSIS/ENGINE/SUSPENSION

- Vortec™ 8.1L V-8, Sequential Fuel Injection (SFI), Gasoline Engine 340 HP @ 4,200 RPM / 455 lbs./ft. Torque @ 3,200 RPM
 - Engine Displacement: 8.1 Liters, 496 Cubic Inches
 - Hydramatic 4L85-E, Automatic 4-speed Electric Transmission with Overdrive (30PBS, 32SBT Only)
 - Allison 1000 MH 6-Speed Automatic Transmission with Overdrive and Transmission Grade Braking (N/A 30PBS, 32SBT)
 - 145 Amp Alternator
- Rear Axle Ratio 4.63:1 (30PBS, 32SBT)
 - Rear Axle Ratio 5.13:1 (N/A 30PBS, 32SBT)
 - Stainless Steel Wheel Liners with Valve Extenders
 - Rear Multi-Leaf Spring Suspension
 - Automatic Hydraulic Leveling Jacks (N/A 30PBS, 32SBT)
 - ABS Brake System
 - 5,000 lb. Hitch Receiver with Dual Connector 4-Pin or 7-Pin
 - One 12V Chassis Battery
 - Emergency Start Circuit

OPTIONS (WORKHORSE/FORD)

- Automatic Hydraulic Leveling Jacks (30PBS and 32SBT Only)
- 18,000 lb. (GVWR) Chassis Option In Place of 16,000 lb. (GVWR) Chassis (30PBS)

COCKPIT

- Automotive Style Dash w/ Wood Grain Dash Kit
 - AM/FM/CD Cassette Radio with Weather Band and Sirius® Satellite Ready
 - Dash Fans
 - Multi-Positioned Sun Visors
- Factory Heat/Air Conditioning, Cruise Control and Tilt Steering Wheel
 - Intermittent Windshield Wipers
 - Map Lights (2) Above Cockpit Seats
 - Leatherette Pilot/Co-Pilot Cockpit Recliner Seats

OPTIONS

- Rear Vision System
- Six-Way Power Driver's Seat

PLUMBING AND LP SYSTEMS

- 6 Gallon Gas Water Heater
 - 12V Water Pump
 - Ext. Utility Center (N/A 30PBS, 32SBT)
 - Exterior Shower (N/A 30PBS)
 - Water Heater Bypass Kit
- Rectangle Shower w/ Folding Door (30PBS)
 - Rectangle Shower w/ Glass Door (34SBD)
 - Neo-Angled Shower w/ Glass Door (N/A 30PBS, 34SBD)

OPTIONS

- Exterior Shower (30PBS Only)
- Glass Shower Door (30PBS Only)

FURNITURE

- Queen Bed with Innerspring Mattress
- Fabric Barrel Chair (34PBT, 34SBD)
- Fabric Booth Dinette with Forward Facing Seatbelts
- Fabric Hide-A-Bed Sofa

OPTIONS

- Leatherette Hide-A-Bed Sofa
- King Bed w/ Innerspring Mattress (34SBD Only) (N/A w/ Bunk Bed Option)
- Hallway Bunks with 2 Fold-Down DVD Players w/ Game Hookups and Lights;

- Wireless Headphones, Bunk Ladder, and 2-Drawer Storage Below (34SBD Only) (N/A w/ King Bed Option)
- Leatherette Euro Recliner with Ottoman In Place of Barrel Chair (34PBT, 34SBD)

APPLIANCES AND ACCESSORIES

- Double Door Refrigerator
- 3-Burner High Output Cooktop with Oven
- Microwave Oven
- Lighted Power Range Hood
- 32" LCD TV – Main Living Area (33SDD, 34SBD)
- 26" LCD TV – Cockpit Overhead Cabinet (30PBS, 32SBT, 34PBT)

- 19" LCD TV – Bedroom (N/A 30PBS, 32SBT)
- Cable TV and Satellite Dish Prep

OPTIONS

- Half-Time Microwave Oven (In Place of Standard Microwave)
- High-Output 3-Burner Cooktop (In Place

- of Cooktop with Oven)
- Surround Sound Home Theater w/ DVD Player
- DVD Player – Living Area
- 19" LCD TV – Bedroom (30PBS, 32SBT)
- Satellite Dish
- Exterior Entertainment Center, AM/FM/CD with 2 Speakers

INTERIOR

- Newport Cherry II Cabinetry
- Cabinet Doors; Upper Doors in Kitchen/Living Area w/ Raised Panel Doors and Top Arch; Lower Doors Square Framed w/ Flat Panel Insert; Upper Doors in Bath/Bedroom Flat Panel Arched
- Stainless Steel Sink w/ High-Raised Faucet and 2 Sink Covers
- Slide-Out Pantry (N/A 30PBS)
- Soft-Touch Vinyl Ceiling (N/A 30PBS, 32SBT)

- Laminate Countertop w/ Stainless Steel Sink Bowl in Bath
- Laminate Countertops Throughout
- Kitchen Countertop Extension (33SDD, 34SBD)
- Wood Slide-Out Fascia w/ Wood Insert
- Satin Nickel Cabinet Door Pulls
- Bath/Bedroom Swing Doors (N/A 32SBT)
- Mini Blinds w/ Valances and Lambrequins
- Television Cabinet – Bedroom
- 2 Decorative Sofa Pillows

- Decorative Fabric Headboard w/ Accents
- Bedspread w/ Sham and Pillow
- Carpet with Padding

OPTIONS

- Decors: Honeycomb II, Tabasco, Timber Ridge
- Full-Length Linoleum
- Day/Night Shades Throughout

ELECTRICAL SYSTEMS

- 30 Amp 120V Distribution Panel
- 50 Amp Electronic 12V Power Converter
- 4.0 kW Generator (30PBS, 32SBT)
- 5.5 kW Generator (N/A 30PBS, 32SBT)
- 12V Auxiliary Battery
- Slide-Out Battery Tray
- Battery Disconnect Switch
- 12V Outlet in Cockpit Area
- Exterior Power Entry Step w/ Light

- Water Pump Switch Convenience Center
- Lights in Outside Storage Compartments
- Map Lights (2) Above Cockpit Seats
- Decorative Satin Nickel Lighting (Living Area Wall light and Bath Vanity Light)

OPTIONS

- 50 amp Service w/ 6 Gallon Gas/Electric Water Heater
- Onan 4.0 kW Generator (30PBS, 32SBT)
- Guardian 5.5 kW Generator (30PBS, 32SBT)
- Onan 5.5 kW Generator
- Second Auxiliary Battery

HEATING, VENTS & AIR CONDITIONING

- 13.5M BTU Roof AC w/ Ducted Air – Front
- In-Floor Rigid Heat Ducts
- 31M BTU Electronic Ignition Furnace (30PBS Only)
- 35M BTU Electronic Ignition Furnace (N/A 30PBS)

- 12V Power Roof Vent in Bathroom
- Heated Holding Tanks (N/A 30PBS)

OPTIONS

- 13.5M BTU Roof AC w/ Ducted Air – Front (Requires 50 Amp Service and 5.5 kW Generator
- Heat Pads for Holding Tanks (30PBS, 32SBT)
- Fantastic Fan – Living Room

WINDOWS, DOORS AND AWNINGS

- Radius Flush-Mount Windows (Safety Glass, Dark Tinted)
- Radius Entrance Door

- Patio Awning
- Slide-Out Topper Awnings
- Tinted Plexiglass Skylight in Bathroom

OPTIONS

- Dual Pane Windows

SAFETY

- Fire Extinguisher
- Deadbolt Lock on Entrance Door
- GFI Protected Circuit on Exterior

- LP Gas Detector
- Smoke Detector
- Carbon Monoxide Detector

- Third Brake Safety Light
- Pilot and Co-Pilot 3-Point Seat Belts
- Seat Belts Throughout



HOLIDAY RAMBLER®

This is Living®

At Holiday Rambler, a brand of Monaco RV, it's our goal for all our customers to enjoy their RV experience from the beginning. We have forged strong, reliable relationships with our dealer partners, and we encourage our customers to do the same. We're proud to boast a network of over 350 dealership partners and service centers across North America. We're confident that this relationship will only enhance your RV experience and provide the added peace of mind you desire, so you can focus on the important stuff. After all, we're not just selling a world-class product, we're selling "fun." You can rest assured, Holiday Rambler and Monaco RV will be along for the ride, every mile your RV adventure takes you.

NAVIGATOR®



SCEPTER®



ENDEAVOR®



NEPTUNE®



ADMIRAL®



ARISTA®



ALUMA-LITE®



AUGUSTA™

