

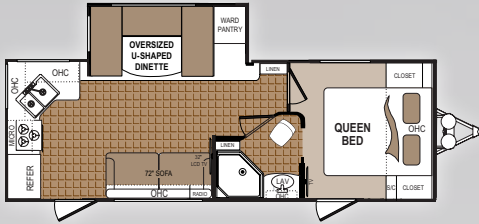
# DENALI

By Dutchmen

## Western Models

### TRAVEL TRAILERS

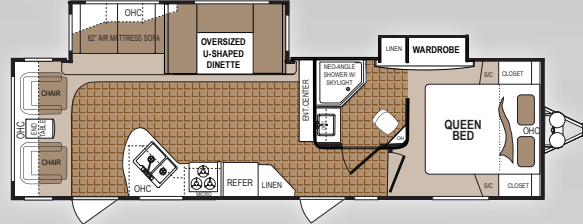
246RK



HITCH WEIGHT (LBS) ..... 786  
UNLOADED WEIGHT (LBS) ... 6,062  
CARGO CAPACITY (LBS) ..... 3,618  
OVERALL HEIGHT ..... 11'  
OVERALL LENGTH ..... 28'

FRESH WATER CAPACITY .....\*52  
BLACK WATER TANK(S) .....42  
GREY WATER TANK(S)..... 84  
FURNACE BTU OUTPUT .....30,000

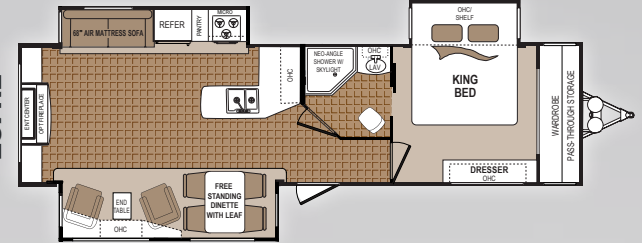
266RL



HITCH WEIGHT (LBS) ..... 936  
UNLOADED WEIGHT (LBS) ... 7,598  
CARGO CAPACITY (LBS) ..... 2,082  
OVERALL HEIGHT ..... 11'  
OVERALL LENGTH ..... 33' 8"

FRESH WATER CAPACITY.....\*52  
BLACK WATER TANK(S) .....42  
GREY WATER TANK(S)..... 84  
FURNACE BTU OUTPUT .....30,000

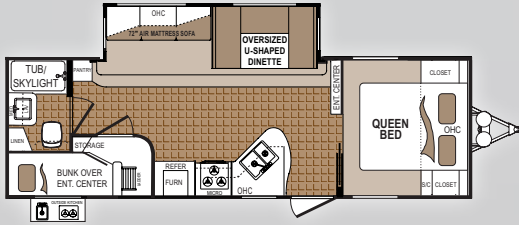
287RE



HITCH WEIGHT (LBS) ..... 909  
UNLOADED WEIGHT (LBS) ... 8,157  
CARGO CAPACITY (LBS) ..... 3,019  
OVERALL HEIGHT ..... 11' 3"  
OVERALL LENGTH ..... 35' 10"

FRESH WATER CAPACITY .....\*52  
BLACK WATER TANK(S) .....42  
GREY WATER TANK(S)..... 42  
FURNACE BTU OUTPUT .....34,000

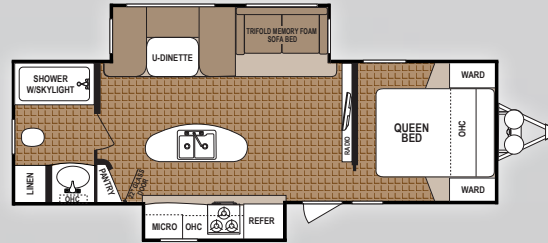
261BH



HITCH WEIGHT (LBS) ..... 807  
UNLOADED WEIGHT (LBS) ... 6,550  
CARGO CAPACITY (LBS) ..... 3,130  
OVERALL HEIGHT ..... 11' 4"  
OVERALL LENGTH ..... 29' 11"

FRESH WATER CAPACITY.....\*52  
BLACK WATER TANK(S) .....42  
GREY WATER TANK(S)..... 42  
FURNACE BTU OUTPUT .....30,000

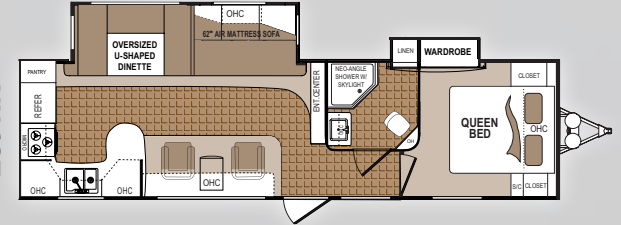
268RB



HITCH WEIGHT (LBS) ..... 975  
UNLOADED WEIGHT (LBS) ... 7,134  
CARGO CAPACITY (LBS) ..... 2,546  
OVERALL HEIGHT ..... 11'  
OVERALL LENGTH ..... 30' 10"

FRESH WATER CAPACITY .....\*67  
BLACK WATER TANK(S) .....42  
GREY WATER TANK(S)..... 42  
FURNACE BTU OUTPUT .....30,000

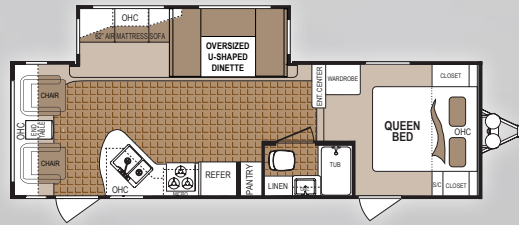
289RK



HITCH WEIGHT (LBS) ..... 934  
UNLOADED WEIGHT (LBS) ... 7,442  
CARGO CAPACITY (LBS) ..... 2,238  
OVERALL HEIGHT ..... 11' 2"  
OVERALL LENGTH ..... 33' 8"

FRESH WATER CAPACITY .....\*52  
BLACK WATER TANK(S) .....42  
GREY WATER TANK(S)..... 84  
FURNACE BTU OUTPUT .....30,000

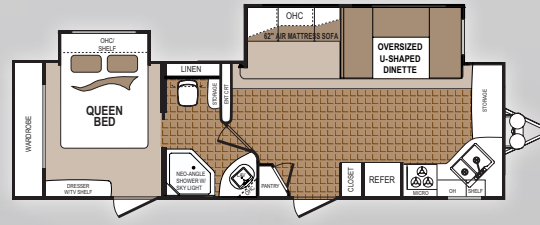
265RL



HITCH WEIGHT (LBS) ..... 798  
UNLOADED WEIGHT (LBS) ... 6,724  
CARGO CAPACITY (LBS) ..... 2,956  
OVERALL HEIGHT ..... 11'  
OVERALL LENGTH ..... 30' 11"

FRESH WATER CAPACITY.....\*52  
BLACK WATER TANK(S) .....42  
GREY WATER TANK(S)..... 42  
FURNACE BTU OUTPUT .....30,000

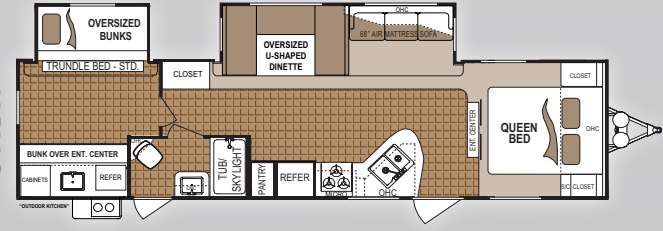
270FK



HITCH WEIGHT (LBS) ..... 889  
UNLOADED WEIGHT (LBS) ... 7,204  
CARGO CAPACITY (LBS) ..... 2,476  
OVERALL HEIGHT ..... 11' 1"  
OVERALL LENGTH ..... 32' 8"

FRESH WATER CAPACITY .....\*52  
BLACK WATER TANK(S) .....42  
GREY WATER TANK(S)..... 84  
FURNACE BTU OUTPUT .....30,000

311BH



HITCH WEIGHT (LBS) ..... 994  
UNLOADED WEIGHT (LBS) ... 7,994  
CARGO CAPACITY (LBS) ..... 1,996  
OVERALL HEIGHT ..... 11'  
OVERALL LENGTH ..... 35' 7"

FRESH WATER CAPACITY.....\*52  
BLACK WATER TANK(S) .....42  
GREY WATER TANK(S)..... 84  
FURNACE BTU OUTPUT .....30,000

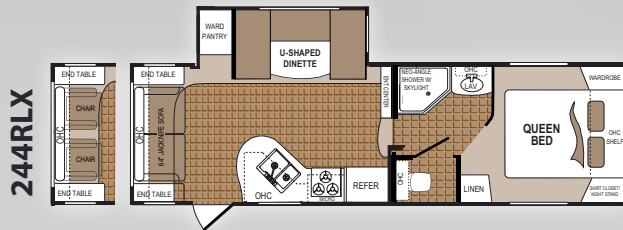
\*FRESH WATER CAPACITY INCLUDES WATER HEATER. ADD 10 GALLONS WITH LUXURY PACKAGE, WHERE AVAILABLE.

# DENALI

By Dutchmen

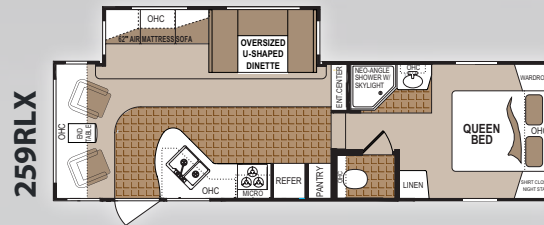
## Western Models

### SUPER-LITE MID PROFILE FIFTH WHEELS



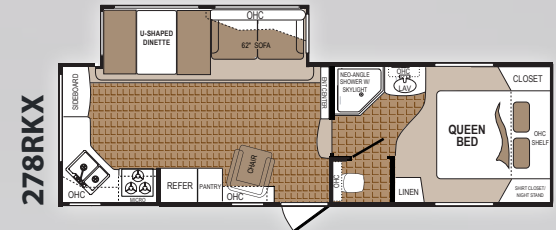
HITCH WEIGHT (LBS) ..... 1,322  
UNLOADED WEIGHT (LBS) ... 6,834  
CARGO CAPACITY (LBS) ..... 3,726  
OVERALL HEIGHT ..... 11' 10"  
OVERALL LENGTH ..... 28' 2"

FRESH WATER CAPACITY ..... \*52  
BLACK WATER TANK(S) ..... 33  
GREY WATER TANK(S) ..... 66  
FURNACE BTU OUTPUT ..... 30,000



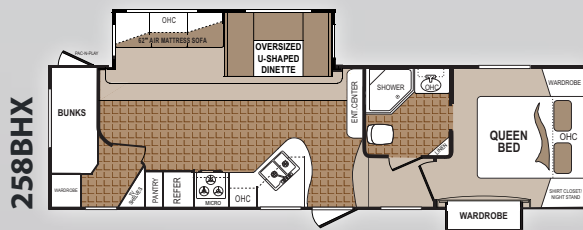
HITCH WEIGHT (LBS) ..... 1,484  
UNLOADED WEIGHT (LBS) ... 7,534  
CARGO CAPACITY (LBS) ..... 3,026  
OVERALL HEIGHT ..... 11' 4"  
OVERALL LENGTH ..... 30' 5"

FRESH WATER CAPACITY ..... \*52  
BLACK WATER TANK(S) ..... 42  
GREY WATER TANK(S) ..... 84  
FURNACE BTU OUTPUT ..... 30,000



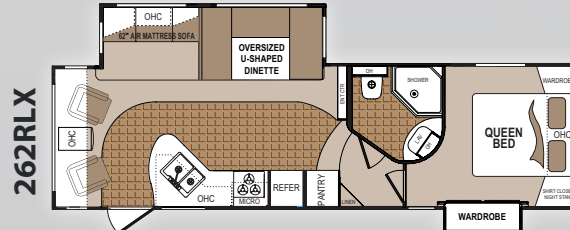
HITCH WEIGHT (LBS) ..... 1,388  
UNLOADED WEIGHT (LBS) ... 7,170  
CARGO CAPACITY (LBS) ..... 3,390  
OVERALL HEIGHT ..... 11' 10"  
OVERALL LENGTH ..... 29' 6"

FRESH WATER CAPACITY ..... \*52  
BLACK WATER TANK(S) ..... 33  
GREY WATER TANK(S) ..... 66  
FURNACE BTU OUTPUT ..... 30,000



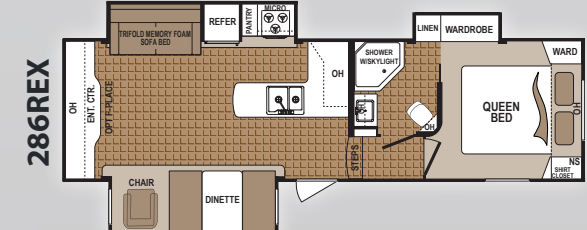
HITCH WEIGHT (LBS) ..... 1,665  
UNLOADED WEIGHT (LBS) ... 8,144  
CARGO CAPACITY (LBS) ..... 2,416  
OVERALL HEIGHT ..... 11' 8"  
OVERALL LENGTH ..... 31' 3"

FRESH WATER CAPACITY ..... \*52  
BLACK WATER TANK(S) ..... 42  
GREY WATER TANK(S) ..... 84  
FURNACE BTU OUTPUT ..... 30,000



HITCH (LBS) ..... 1,601  
UNLOADED WEIGHT (LBS) ... 7,794  
CARGO CAPACITY (LBS) ..... 2,766  
OVERALL HEIGHT ..... 12'  
OVERALL LENGTH ..... 30' 11"

FRESH WATER CAPACITY ..... \*52  
BLACK WATER TANK(S) ..... 42  
GREY WATER TANK(S) ..... 75  
FURNACE BTU OUTPUT ..... 30,000



HITCH WEIGHT (LBS) ..... 1,764  
UNLOADED WEIGHT (LBS) ... 8,352  
CARGO CAPACITY (LBS) ..... 2,208  
OVERALL HEIGHT ..... 11' 11"  
OVERALL LENGTH ..... 32'

FRESH WATER CAPACITY ..... 63  
BLACK WATER TANK(S) ..... 48  
GREY WATER TANK(S) ..... 48  
FURNACE BTU OUTPUT ..... 30,000

\*FRESH WATER CAPACITY INCLUDES WATER HEATER.  
ADD 10 GALLONS WITH LUXURY PACKAGE, WHERE AVAILABLE.

