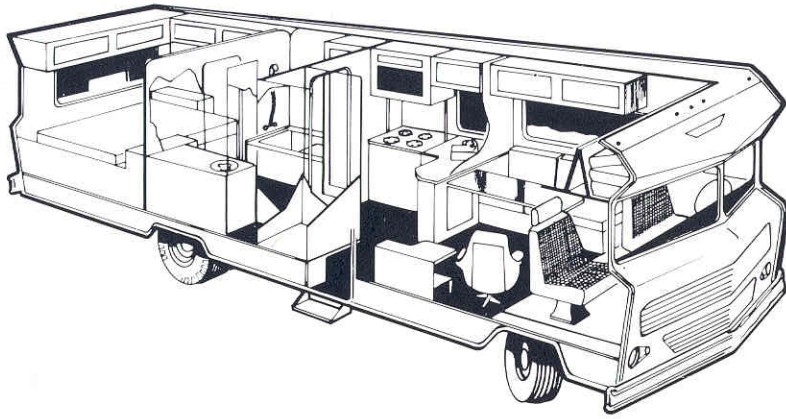




The Revolutionary 1972 D-28 Chieftain II

WINNEBAGO®



D-28 SPECIFICATIONS

Length 28' 1" / width 7' 6" / exterior height 10' 2" / interior height 6' 4" / curbside weight 10,550 / fuel tanks 79 gallons / water system 66 gallons / sleeps 6 / Dodge M-375 chassis / 178" wheelbase / V-8 413 cu. in. engine / 265 H.P. / 3 speed automatic transmission / power steering / power brakes / dual rear wheels.



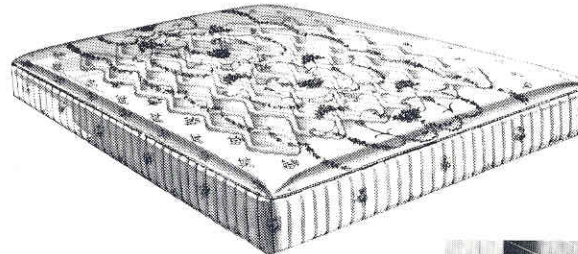
Winnebago creates a revolution. A revolution in the language of motor home travel luxury. It's the all new limited edition D-28 Chieftain II—the last word in comfort and motor home luxury.

Our 28 foot Chieftain II is so roomy; so elegant, it's like having your own yacht on wheels. And you'll always feel right at home whether you're parked at the Country Club or out on the road.

Every D-28 Chieftain II has been exclusively designed for those who demand the ultimate in motor home luxury. Features you would normally pay extra for are included as standard equipment. Everything is plush, modern, and efficient. Our revolutionary Chieftain II has been exclusively designed for those who demand nothing but the best. With such gracious living features built right in, the \$20,000* price is certainly no more than what you'd expect.



GO THE WINNEBAGO ROUTE



*Manufacturers suggested retail price FOB Forest City, Iowa.

For our revolutionary new D-28 Chieftain II, we've taken the outstanding features of our exclusive Chieftain line of motor homes. We've then added a score of new features that enhance the best we offer. The Chieftain II provides the finest Dodge motor home chassis, a 413 cubic inch engine, automatic transmission, power brakes, power steering, and cruise control for effortless driving.

There's a uniquely designed social area, serving bar, and tasteful appointments for entertaining. The rear master bedroom suite features a Sealy Posturepedic innerspring mattress. And there's a huge dressing room with toilet, tub, and shower with overhead vent, wall mounted vanity mirror and side lights. A Thermosan waste disposal system and complete water purification system are included as standard equipment. On or off the road, you'll live in a completely controlled environment with twin roof mounted air conditioners, and forced air ducted heating. The built-in vacuum cleaner, AM/FM stereo and 5,000 watt Onan power plant are a few of the other exclusive Chieftain II features.

There is no doubt. The D-28 Chieftain II by Winnebago has been designed and built for those with discriminating taste.

Standard Equipment

Safety Features:

- Clearance lights comply with laws in every state
- Backup lights, parking lights, turn signals with safety flashers
- Extra side-mounted turn signals
- Seat belts for driver and co-pilot

- Door lock complies with National Highway Safety Bureau standard number 206
- Fire extinguisher
- Tinted windshield

Exterior Features:

- Radius cornered tinted slider windows with screens
- Rear window washer and wiper
- Chrome bumpers, front and rear
- Glide-away step with self-cleaning mesh tread
- Luggage rack and ladder
- Fold down television antenna
- Tire carrier and vinyl cover
- Trailer hitch
- Screen door

Kitchen Features:

- 7 cubic foot gas/electric refrigerator
- 4 burner stove with eye-level oven and power stove vent
- Double stainless steel sink
- Pressurized water system

Sleeping Features:

- Sealy Posturepedic innerspring mattress for master bedroom
- Bedspread and matching head board

Interior Features:

- Deluxe wall-to-wall carpeting
- Pre-finished washable Golden Walnut Paneling
- Single swivel lounge chair
- Beverage tray
- Wall mounted coffee table
- Electric clock
- Waste basket
- Flexsteel lounge converts into bed

Driver's Compartment Features:

- AM radio with 4 speakers
- FM radio with 4 or 8 track stereo
- Automotive instrument panel with generator starter switch, hour meter, battery volt meter, and auxiliary fuel gauge.
- Arm and head rests
- Extra large sun visors
- 4 adjustable defroster vents
- Cigarette lighter
- Ash trays

- Map light
- Inside rear view mirror

Bathroom Features:

- Tub and shower combination with flexible phone head shower
- Power vent in bathroom
- Marine toilet
- Stool cushion
- Motor Aid 6 gallon water heater
- Water purification system
- Twin 30 gallon water tanks

Automotive Features:

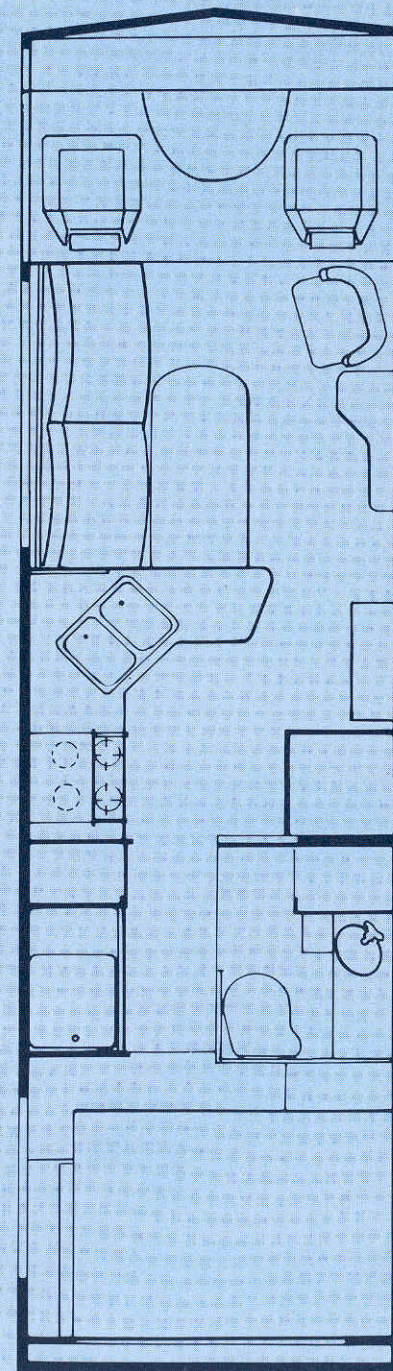
- Heavy duty alternator
- Hydraulic jack
- Dodge V-8 413 cubic inch engine
- Automatic transmission
- Cruise control
- Power brakes
- Power steering
- 29 and 50 gallon gas tanks with electric change-over on dash
- Front end engine access to oil fill, dip stick, radiator fill and window washer reservoir.

Utilities:

- Twin 23,000 BTU furnaces
- Thermosan waste disposal system
- Twin 10,000 BTU roof mounted air conditioners
- 5,000 watt Onan generator with Super Sound Proofing
- Double 40# L.P. gas bottles
- Automatic L.P. changeover
- 220 Amp auxiliary battery
- Battery gauge
- Slide out battery tray
- Hour meter
- Water and holding tank gauge
- City water hook up

Optional Equipment:

- Automotive air conditioning
- Double co-pilot seat
- Spare tire
- Wheel covers
- Mor-Ryde
- Limited slip rear axle
- Battery charger
- Front Flexsteel bunk
- Bunk ladder
- Monomatic A & W toilet



Winnebago Industries, Inc., designs, engineers, and builds a complete line of outstanding recreation vehicles. With the nation's largest and strongest network of dealers, Winnebago commands an enviable reputation for product availability, quality workmanship, and service. You'll find an authorized dealer close at hand no matter where you might be traveling.

Winnebago is a publicly owned company and in 1970 began trading its stock on the New York Stock Exchange. All products are backed by a financially strong and well respected company that continues in its role as the industry leader.

Winnebago offers twelve distinctively different motor home models in either the BRAVE, INDIAN, or CHIEFTAIN series. There's a fully self-contained motor home for every recreation vehicle urge; for every pocketbook. In addition, Winnebago manufactures a full line of travel trailers, camper coaches, and Kap Pickup Covers.

All Winnebago products are quality engineered and built in the world's largest recreation vehicle manufacturing facility. And because Winnebago outsells all other RV manufacturers, it can combine mass production efficiency with raw material buying power. In addition, Winnebago makes use of vertical integration manufacturing concepts. With vertical integration, many of the key component parts are manufactured in our own plant. That reduces costs and insures that every product meets our own high standards of quality and workmanship. For you, that means greater value—getting more for your money when you buy Winnebago.

Whether you're a newcomer to the recreation vehicle field, or a seasoned veteran, there's a Winnebago product that will satisfy your individual needs. When you go the Winnebago route, you've purchased the finest RV product that money can buy.

THERMO-PANEL* CONSTRUCTION...A WINNEBAGO EXCLUSIVE.

Your Winnebago recreation vehicle will be warmer in the winter; cooler in the summer because of our exclusive Thermo-Panel* Construction process. Exterior pre-finished aluminum and interior paneling are sandwiched and permanently bonded to a core of Styrofoam** brand plastic foam insulation. This unique fabricating process is strong, lightweight, and provides excellent insulating properties.



YOUR WINNEBAGO GUARANTEE.

Each new Winnebago motor home, travel trailer, camper coach, or Kap Pickup Cover using our exclusive Thermo-Panel* Construction process is **GUARANTEED** against defects in lamination for the lifetime of the product to the original purchaser.

* Thermo-Panel is a registered trademark of Winnebago Industries, Inc.

** Styrofoam is a registered trademark of the Dow Chemical Company.

WINNEBAGO

AUTHORIZED DEALER