



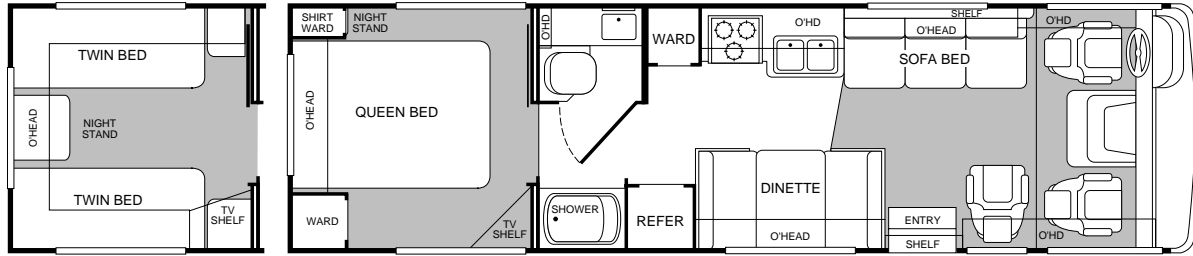
Southwind Storm®

FLEETWOOD® RV

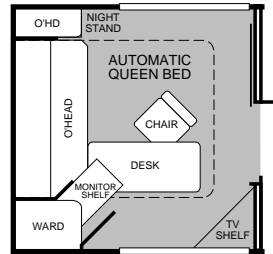
Checked the weather lately? There's a big Storm heading this way.

How does the new Storm manage to offer so many of the finer things associated with higher-end motor homes for such a modest price? We start with the basics. Fleetwood's Power Platform II with an advanced chassis design results in greater structural strength and a smoother ride. Then we add a restyled fiberglass front cap and an expansive automotive-bonded windshield for an impressive view from both inside and out. We didn't stop there—we addressed the interior with the same panache, including hardy alder wood cabinetry, dovetail drawer construction, and day/night shades for enhanced intimacy. The driver's compartment is built for convenience, featuring a map storage area, telephone power port and improved lighting. Adding them all up, it's easy to see why Storm's features, options, and designs make it the clear favorite as Fleetwood's most affordable wide-body motor home in any kind of weather.

2000 Southwind Storm Floor Plans



SmartRoom® converts easily from a bedroom to an office or to 30 sq. ft. of floor space to use however you wish. Actual cabinetry and design varies by product and floor plan.



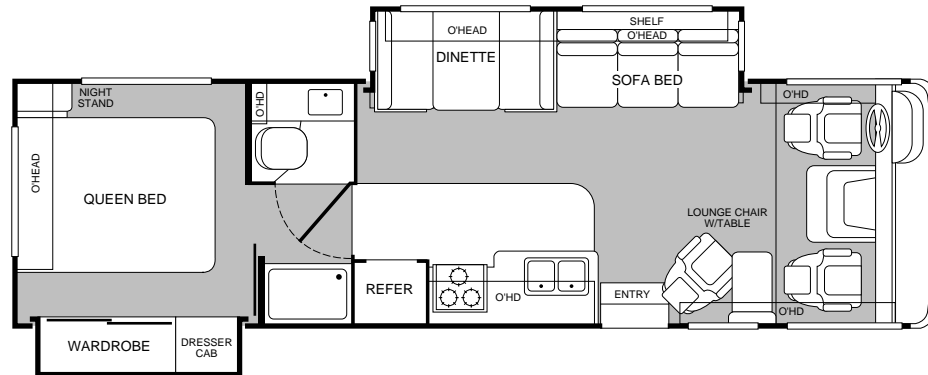
MODEL 30H

- Island Queen Bed
- Private Shower and Toilet
- Lounge Chair
- Sofa Bed and Dinette
- Optional Twin Beds
- Optional SmartRoom®

NEW FOR 2000

MODEL 31W

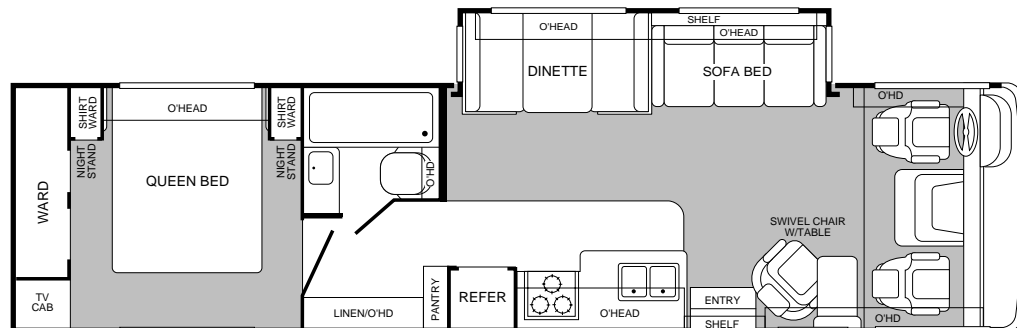
- Living Room Slide-Out
- Lounge Chair with Table
- Private Shower and Toilet
- Spacious Wardrobe Slide-Out
- Island Queen Bed



NEW FOR 2000

MODEL 34D

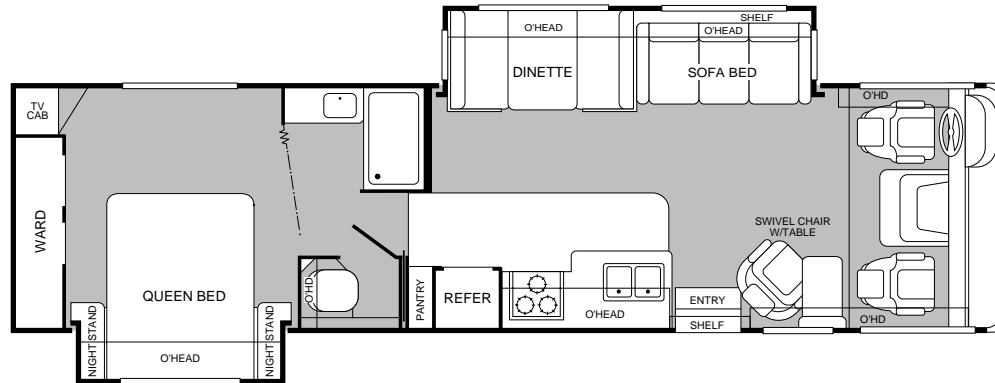
- Living Room Slide-Out
- Sofa Bed and Dinette
- Spacious Wardrobe
- Fully Enclosed Bathroom
- Swivel Chair with Table



NEW FOR
2000

MODEL 34N

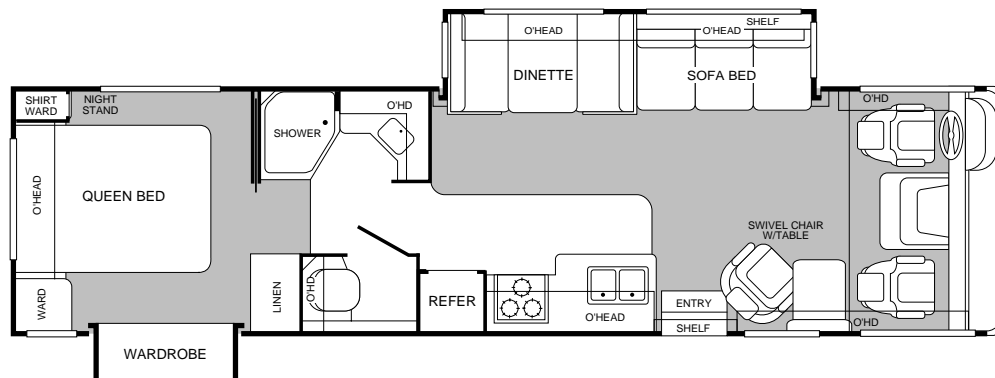
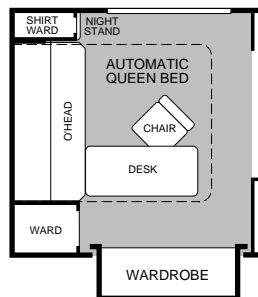
- Living Room Slide-Out
- Bedroom Slide-Out
- Island Queen Bed
- Private Toilet
- Swivel Chair with Table



NEW FOR
2000

MODEL 34T

- Living Room Slide-Out
- Wardrobe Slide-Out
- Dinette and Sofa Bed
- Private Toilet
- Swivel Chair with Table
- Optional SmartRoom®



2000 Southwind Storm Standard Features

EXTERIOR AUTOMOTIVE

Tinted Windshield
Undercoating
Stainless-Steel Wheel Simulators
Valve Extenders
Steel Surface on Bulkhead
Trailer Hitch with 4-Point Electrical Hook-up
Halogen Headlights
Under-Floor Spare Tire (Selected Models)
Dual Battery Charge Control
Single Motor Windshield Wipers with Wet Arm

INTERIOR AUTOMOTIVE

Intermittent Wiper Control
Double Swivel Sun Visors with Map Pockets
Cruise Control
Radio with Cassette AM/FM/MX—Electronic Tuning
Auxiliary Start Circuit
Battery Disconnect System
Auto A/C Heater Combo
Battery Powered Radio Switch—Main/Auxiliary
Driver/Passenger Side Magazine Rack
Tilt Steering Wheel
Driver/Passenger Captain's Chairs
with Reclining Back/Slide Controls
3-Point Seat Belts on Driver/Passenger Seats

PLATFORM CONSTRUCTION

Basement Floor Configuration
Heated Water & Holding Tank Compartments
Carpeted, Galvanized Luggage Compartments
Steel Truss System

BODY STRUCTURE

Vacubond Upper/Lower Floor
Vacubond Walls with Smooth Exterior Fiberglass
Radiused Roof with Ducted A/C & Flat Interior
Rubber Roof
Steel Floor/Wall/Ceiling Framing

ELECTRICAL

Patio Receptacle in Luggage Compartment
120V/12V AC/DC Converter Central Electrical Panel
with Charger
Water Pump Switch
4.0kW Onan® Generator
30-amp Service
Dual 6V/Deep-Cycle 218-amp House Batteries
VCR Ready
Rear TV Receptacle

INTERIOR

3 Interior Decors
Skylight in Tub/Shower
Wall-to-Wall Carpet with Pad—Living & Bedroom
Vinyl Floor Covering—Galley & Bath
Wood Drawers (Dovetail Construction)
Roller Guide Drawer Slides with Transit Ship Locks
Brass Finished Cabinet Hardware
Reclining Bucket Seat/Lounge
Seat Belts at Designated Seating Positions
Shades—Day/Night in Living, Night in Bedroom
Bedspread
Innerspring Mattress
Slide-Out Dinette Bins with Locks
Window Covering
Molded Shower Pan ABS
Bright Brass Bath Accessories
Entry Rail (Oak & Brass)
Sink Cutting Board
Large, Double Stainless-Steel Sink
Adjustable Cabinet Shelves (Selected Cabinets)
Solid Divider Doors

EXTERIOR

Fiberglass Front Cap
Fiberglass Front Bumper
Aluminum Front Grille
ABS Front/Rear Wheel Well Trims
One-Piece, Swing-Down Engine Access Door
Entry Door with Deadbolt Latch
Slider Windows Throughout
Roof Ladder
Exterior Assist Handle
Exterior Rear View Mirrors
20' Sewer Hose
TV Antenna
Park Cable Receptacle
Awning Rail/Drip Molding (Both Sides)
Power Entry Step
Exterior Shower
Porch Light
3 Colorway Graphics to Match Decor
Lower Body Accent Panel
Southwind Storm Logo Badging

APPLIANCES

20" Panasonic® TV in Front Overhead
Smoke Detector
LP Detector
CO Detector
Furnace 34M BTU
6-Gallon Quick Recovery Water Heater with D.S.I.
16" 3-Burner, High-Output Range with Oven
Light/Power Range Hood & Monitor Panel
Folding Range Cover
Single A/C with Solar Panel
Marine Toilet
1-cu.ft. Microwave with Electric Touch Pad
6-cu.ft. Dometic® Double Door Refrigerator
Single-Lever Galley Faucet
Demand Water Pump with Filter
Power Bath Vent
TV Antenna
Video Control Box
Fire Extinguisher
Telephone Jack
12V Jack

INTERIOR LIGHTING

Decor Lighting
Incandescent Lighting
Make-Up Lights in Bath

EXTERIOR STORAGE

Insulated Luggage Doors
Single-Paddle/Metal Latches
Continuous One-Piece Bulb Seals
Gas Lift Strut Supports—One Per Door
Steel Seal Frames
Carpeted Luggage Compartments

Product information and photography included in this brochure were as accurate as possible at the time of publication. For the most current product information and changes, please visit our Website at www.fleetwood.com or contact your local Fleetwood dealer. Subsequent refinements may be evident in the actual product. Prices and specifications are subject to change without notice. All fuel and liquid capacities are approximate and dimensions are nominal. Fleetwood has designed its motor home brands to provide a variety of potential uses for its customers. Each unit features the optimum storage, fluid, seating and sleeping capabilities. Though the customer enjoys this potential, he/she also has the responsibility to select the proper combinations of loads without exceeding the chassis weight capacities.

New Southwind Storm Features For 2000

Our engineering may set us apart from the rest. But the things you'll notice most, when you and your family take a trip, are the top-of-the-line features. This year we have, once again, added to an already large list of features with the following:

- **Power Platform II**
- **Automotive Bonded Windshield**
- **Restyled Fiberglass Front Cap and Lower Fascia**
- **Driver's Compartment Features a Convenient Storage Area for Maps and a Multi-Use Power Port**
- **Dovetail Drawer Construction**
- **Day/Night Shades**

2000 Southwind Storm Options

NEW FOR
2000

NEW FOR
2000

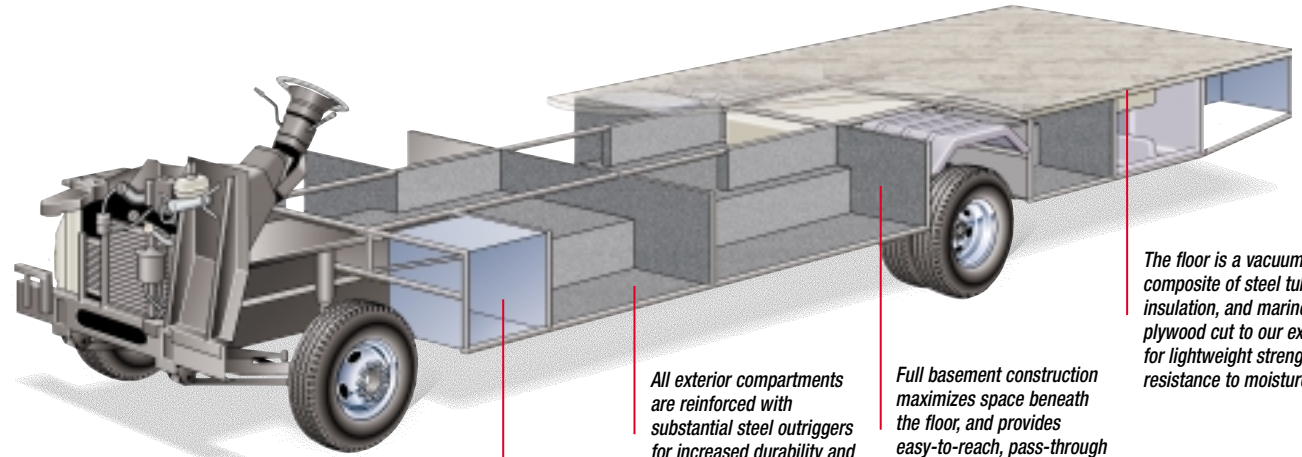
NEW FOR
2000

NEW FOR
2000

	30H	31W	34D	34N	34T
EXTERIOR AUTOMOTIVE					
Workhorse Chassis 7.4L Vortec Engine	Opt	N/A	Opt	N/A	N/A
Ford Chassis 6.8L Engine	Opt	Opt	Opt	Opt	Opt
Rear Vision Camera	Opt	Opt	Opt	Opt	Opt
EXTERIOR					
Awning—USA	Opt	Opt	Opt	Opt	Opt
4-Pt Manual Hydraulic Levelers—Workhorse	Opt	N/A	Std	N/A	N/A
4-Pt Manual Hydraulic Levelers—Ford	Opt	Std	Std	Std	Std
Heated Remote Rear View Mirrors	Opt	Opt	Opt	Opt	Opt
ELECTRICAL					
ECC w/Dual A/C with 5.0kW Generator Upgrade	Opt	Opt	Opt	Opt	Opt
CSA Generator 4.0kW—Onan® Microlite	Opt	Opt	Opt	Opt	Opt
CSA Package—Workhorse	Opt	N/A	Opt	N/A	N/A
CSA Package—Ford	Opt	Opt	Opt	Opt	Opt
CSA w/ECC Dual A/C with 5.0kW Generator Upgrade	Opt	Opt	Opt	Opt	Opt
APPLIANCES					
VCR/VHS	Opt	Opt	Opt	Opt	Opt
Satellite Dish	Opt	Opt	Opt	Opt	Opt
Compact Disc Player	Opt	Opt	Opt	Opt	Opt
Fantastic® Power Roof Vent	Opt	Opt	Opt	Opt	Opt
SLEEPING ACCOMMODATIONS (STANDARD)					
Sofa Bed	46"x 72"	46"x 66"	46"x 66"	46"x 66"	46"x 66"
Dinette	40"x 74"	40"x 74"	40"x 74"	46"x 74"	46"x 74"
Queen Bed	60"x 80"	60"x 80"	60"x 80"	60"x 80"	60"x 80"
SLEEPING ACCOMMODATIONS (OPTIONAL)					
Twin Beds with Nightstand	34"x 76"	N/A	N/A	N/A	N/A
SmartRoom®	60"x 74"	N/A	N/A	N/A	60"x 74"
SLIDE-OUT					
Living Room—Dinette/Sofa	N/A	Std	Std	Std	Std
Bedroom Wardrobe—Closet/Organizer	N/A	Std	N/A	N/A	Std
Bedroom—Bed	N/A	N/A	N/A	Std	N/A
INTERIOR					
SmartRoom®	Opt	N/A	N/A	N/A	Opt
Shower Curtain	N/A	N/A	Std	N/A	N/A
Pleated Shower Door	Std	Std	N/A	Std	N/A
Shower Door with Bright Brass Frame	N/A	N/A	N/A	N/A	Std

The Power Platform II Makes The Difference

Southwind Storm's quality begins long before the features come on board. We begin by building on our exclusive Power Platform II, a unique truss design welded together using tubular steel that's durable, strong, and dependable. The result is a quiet and nearly flawless ride, increased floor strength, and substantially more storage space below. An all-steel foundation further reduces stress loads on the sidewalls and minimizes chassis flex on uneven roads.



Drawing is for illustrative purpose only to highlight aspects of motor home construction. Actual motor home design depends on model and is subject to change.

All exterior compartments are reinforced with substantial steel outriggers for increased durability and years of cargo carrying.

Easy access compartments let you get to Storm's batteries.

Full basement construction maximizes space beneath the floor, and provides easy-to-reach, pass-through storage. Heated compartments enclose the water tanks.

The floor is a vacuum-bonded composite of steel tubing, foam insulation, and marine-grade plywood cut to our exact specs for lightweight strength and resistance to moisture.

2000 Southwind Storm Specifications

FORD CHASSIS	30H	31W	34D	34N	34T
Engine LD	6.8L	6.8L	6.8L	6.8L	6.8L
Wheel Base	190"	208"	208"	208"	208"
GVWR lbs/kgs (1)	18,000/8,165	20,500/9,299	20,500/9,299	20,500/9,299	20,500/9,299
Front GAWR lbs/kgs (2)	7,000/3,175	7,000/3,175	7,000/3,175	7,000/3,175	7,000/3,175
Rear GAWR lbs/kgs (2)	11,000/4,989	13,500/6,123	13,500/6,123	13,500/6,123	13,500/6,123
Base Weight lbs/kgs (3)	13,090/5,937	TBD	15,785/7,160	TBD	TBD
GCWR lbs/kgs (4)	23,000/10,433	25,500/11,567	25,500/11,567	25,500/11,567	25,500/11,567
Hitch Rating/Tongue Weight lbs	5,000/500	5,000/500	5,000/500	5,000/500	5,000/500
Hitch Rating/Tongue Weight kgs	2,268/227	2,268/227	2,268/227	2,268/227	2,268/227
Fuel Capacity gal/lbs	75/450	75/450	75/450	75/450	75/450
Fuel Capacity gal/kgs	75/204	75/204	75/204	75/204	75/204

WORKHORSE CHASSIS	30H	31W	34D	34N	34T
Engine CID	454	N/A	454	N/A	N/A
Wheel Base	190"	N/A	208"	N/A	N/A
GVWR lbs/kgs (1)	16,500/7,484	N/A	20,000/9,072	N/A	N/A
Front GAWR lbs/kgs (2)	5,500/2,495	N/A	5,500/2,495	N/A	N/A
Rear GAWR lbs/kgs (2)	11,000/4,989	N/A	14,500/6,577	N/A	N/A
Base Weight lbs/kgs (3)	12,400/5,625	N/A	TBD	N/A	N/A
GCWR lbs/kgs (4)	20,000/9,072	N/A	21,000/9,525	N/A	N/A
Hitch Rating/Tongue Weight lbs	3,500/250	N/A	3,500/250	N/A	N/A
Hitch Rating/Tongue Weight kgs	1,588/113	N/A	1,588/113	N/A	N/A
Fuel Capacity gal/lbs	75/450	N/A	75/450	N/A	N/A
Fuel Capacity gal/kgs	75/204	N/A	75/204	N/A	N/A

DIMENSIONS	30H	31W	34D	34N	34T
Overall Length	31' 6"	32'	35'	34' 6"	35'
Overall Height	11' 10"	11' 10"	11' 10"	11' 10"	11' 10"
Overall Width (maximum)	102"	102"	102"	102"	102"
Interior Height (maximum)	79"	79"	79"	79"	79"
Interior Width (maximum)	96"	96"	96"	96"	96"

STORAGE CAPACITY (CU.FT.)	30H	31W	34D	34N	34T
Exterior (Ford/Workhorse) Est.	88/88	TBD / N/A	130/TBD	TBD / N/A	TBD / N/A

LIQUID CAPACITIES (GALLONS/LITERS)	30H	31W	34D	34N	34T
Fresh Water	75/284	75/284	80/303	75/284	75/284
Water Heater	6/23	6/23	6/23	6/23	6/23
Body-Waste Holding	50/189	50/189	50/189	50/189	50/189
Grey-Water Holding	50/189	50/189	50/189	50/189	50/189
Appliance LPG Tank (wc/see note)	25/95	25/95	25/95	25/95	25/95

Note: Tank manufacturer's listed water capacity (wc). Actual filled LP capacity is 80% of listing due to safety shutoff required on tank.

1. GVWR (Gross Vehicle Weight Rating): Means the maximum permissible weight of this motor home. The GVWR is equal to or greater than the sum of the unloaded vehicle weight plus the net carrying capacity.
2. GAWR (Gross Axle Weight Rating): Means the maximum permissible loaded weight a specific axle is designed to carry.
3. Base Weight: Means the weight of the motor home without fuel, options, water, cargo, or passengers.
4. GCWR (Gross Combination Weight Rating): Means the value specified by the motor home manufacturer as the maximum allowable loaded weight of this motor home with its towed trailer or towed vehicle. Towing and braking capacities may differ. Refer to Fleetwood and chassis manufacturer manuals for complete information.

FLEETWOOD RV

Fleetwood Enterprises, Inc.
RV Marketing
P.O. Box 7638
Riverside, CA 92513-7638



Southwind
Storm[®]
FLEETWOOD RV

Your local Fleetwood RV dealer is:

TO FIND A FLEETWOOD DEALER near you, call 24 hours a day at 1-800-444-4905 or visit our Website at www.fleetwood.com

FOR CUSTOMER ASSISTANCE, call toll free 24 hours a day at 1-800-322-8216, visit our Website, or you may write to Fleetwood Enterprises, Inc., P.O. Box 7638, Riverside, CA 92513-7638.

Product information and photography included in this brochure were as accurate as possible at the time of publication. For the most current product information and changes, please visit our Website at www.fleetwood.com or contact your local Fleetwood dealer. Subsequent refinements may be evident in the actual product. Prices and specifications are subject to change without notice. All fuel and liquid capacities are approximate and dimensions are nominal. Fleetwood has designed its motor home brands to provide a variety of potential uses for its customers. Each unit features the optimum storage, fluid, seating and sleeping capabilities. Though the customer enjoys this potential, he/she also has the responsibility to select the proper combinations of loads without exceeding the chassis weight capacities.



This award certifies that Fleetwood has met Ford's rigid quality standards for modifying a Ford chassis.