



TrailManor

Newsletter: May/June 2014



The All-New RISE™ by TrailManor

TrailManor Enters A New Era With A New Product Line That Opens With The Touch of A Button.

All it takes is one finger.

To open the brand new RISE by TrailManor travel trailer, you simply touch a button on the remote control. A patented hydraulic system called “R-Drive” does all the work.

The RISE by TrailManor has been in development for nearly a year. It was created because there are scores of people who love the TrailManor concept of a lightweight trailer that lowers for efficient, easy towing, but they were hesitant about being able to open a traditional TrailManor (even though many people

can do it with just one hand). The RISE by TrailManor overcomes this issue, and opens TrailManor up to a whole new market of RV enthusiasts.

The R-Drive hydraulic system has been rigorously tested by the military and has proven to be both tough and reliable. Four synchronized hydraulic lifts at the corners of the trailer raise and lower the roof by remote control. There are no pulleys or cables. You simply touch a button.

And—in the unlikely event that you lose battery power—you can simply attach an electric screwdriver to the hydraulic fitting and open and close the trailer this way.

Continued Page 3

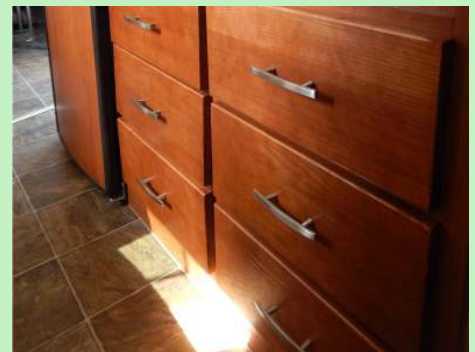
First Pics: RISE



Trailer Front



Curtain and door close off back of trailer to create private dressing area



6 Drawer Galley/Dresser



Murphy Bed Floorplan

Cleo's Column



By Cleo Eickhoff,
TrailManor VP of
Marketing and Co-
Owner

This has to be the best time of every year. . . Springtime!

Trees and flowers are in full bloom, crops are thriving in the field, creeks and rivers are flowing with melted snow and fresh rains AND it is still light in the night sky at 10 p.m. For everyone who is able to enjoy these days out camping – you are blessed.

TrailManor's Nebraska Plant is very near ready for production. The first RISE trailers have been manufactured in Tennessee. We'll begin production in Nebraska soon. The RISE travel trailer has drawn a lot of attention and interest and orders are pouring in. We are excited about having them out in the marketplace for our customers.

Our new upright travel trailer, the *Trailview* and our *RISE truck camper* are nearing completion off the drawing board and should be ready for production soon. The RISE also promises to be very popular as is the upright TrailView. Everyone at TrailManor has been extremely busy getting all these new models out as well as keeping up with production of the classic models. The SilverTrail edition has been a huge success. The updated interior has demanded a lot of attention as well.

One of our Tennessee employees, Todd Mozingo, has two little girls—Skylar, 11, and Riley, 5. Riley has had multiple surgeries because of brain cancer, and recently had another visit with her Mom and Dad to St. Jude's Hospital and Le Bonheur Hospital – both in Memphis, TN. Riley is doing really well and we want to introduce her to you because she is so special to all of us and she is such a firecracker. So, instead of highlighting one of our dealers this month we are highlighting Riley.

Did you see *Trailer Life Magazine's* June magazine edition? We are very pleased that they put TrailManor on the front cover and did a feature story about us.

Until next newsletter. . . Stay healthy, and Happy Camping.

TrailManor's Inspiring Little Trooper: Riley Mozingo



Five-year-old Riley Mozingo is the daughter of TrailManor employee Todd Mozingo and his wife, Tomeka. Her story is one we thought TrailManor owners would like to know.

Riley was a typical 18-month-old child, becoming mobile and getting into everything.

Then she suddenly stopped walking.

Doctors were puzzled, and suggested the problem could be anything from a pulled muscle to fluid on her hip. But two months later, an MRI revealed the real, terrifying cause: a brain tumor so big that the radiologist was surprised that she had walked at all.

Immediately, arrangements were made for Riley to have surgery. After three surgeries in the space of two weeks, she began a year and a half of chemotherapy. After a break in the chemo, the news wasn't good: the tumor had continued growing.

Then recently, a scan showed that some screws from a previous surgery were working loose, which meant more treatment.

In spite of all this, however, Riley is doing remarkably well. Riley's parents keep her life as normal as they can. She attends school, she runs barefoot in the yard, she has pets and she is just like any other little girl with toys, dolls, strollers and friends.

"She is a trooper," her Mom reports. "And she is a little monster who keeps us on our toes," she added.

Riley's parents were always very private about her condition—not that they didn't want anyone to know, they just didn't know how everyone would react. But they

changed their approach when they saw the outpouring of support that came from people throughout the community.

Two years ago, 'Relay For Life' contacted the Mozingos about the possibility of them being involved in that program. They agreed, which led to connections with the Children's Miracle



Photo: The Oak Ridger

Network, which sent the whole family on a trip to Disney World.

Riley's school teacher's grandmother had a connection with Dollywood, and she used that connection and made arrangements for Riley and her family to meet Dolly Parton—an absolute thrill to Riley's sister, Skylar, who is an absolute fan of Dolly's.

The Children's Miracle Network connection also put the Mozingos in touch with an organization called Special Spaces. Riley's school sponsored a fundraising parade for Special Spaces. Two local politicians made it possible for Riley to have her very own horse and carriage to pull her (in a princess outfit) in her very own parade. Special Spaces used the funds to redo and decorate Riley's room in all the Princess décor, to redo and decorate her sister Skylar's room, to give the family a swing/tree house set, to provide new sod for the

lawn, and to provide materials for the parents to build a storage shed.

There was money left over from the project, which will go towards the next child and family that needs the fantastic support and care that Special Spaces provides. And who will be working on that project? Todd and Tomeka Mozingo, of course. They want to pass on the support they've received to someone else in need. And they feel very blessed to have caring people who've gone to exceptional lengths to help their daughter.

In the meantime our little Princess Riley continues her big battle and we'll keep her (and her family) in our prayers.

If you'd like to know more about Children's Miracle Network or Special Spaces, here are website links:

childrensmiraclenetworkhospitals.org
specialspaces.org

RISE by TrailManor

The RISE by TrailManor is a whole new way of thinking about smart RVs.

The RISE by TrailManor is also remarkably lightweight. It can be towed by most minivans, crossovers, and small SUVs, so there's no need to buy a bigger tow vehicle. Because it folds down, it can be stored in some carports and garages (although it is taller than a traditional folding TrailManor). Once open, you have nearly seven feet of headroom, plus living space that features some innovative floorplans.

Every RISE by TrailManor has a dinette, a full kitchen with plenty of storage, and a hardwall bathroom with shower and tub (plus a privacy curtain that turns the back of the trailer into a private dressing area).

The front of the RISE by TrailManor either offers a Murphy Bed/Sofa combination (in Queen size or Full, depending on your needs) OR a unique second dinette that converts to two twin beds or an oversized King bed. So you have options on how to shape your trailer's space.

There's more. A 100-watt solar panel is standard, as is an HD TV antenna and

A HD television mounted on a swivel which folds down and stores in its own cabinet. The TV can be easily positioned to be viewed from the living area dinette or bedroom.

On top of the RISE, there's a rack track that allows you to carry gear such as a kayak, storage pod, or other items for outdoor fun. If you have an expensive kayak, for example, you don't want to leave it lying around the campsite. With the RISE, you can store it on top at night out of harm's way, then lower the top with the touch of a button to retrieve your boat and be on the water first thing the next morning.

There's plenty to love about the new RISE by TrailManor. Dealers are now taking orders for these amazing new trailers, and production has begun.

To learn more about the RISE by TrailManor, visit www.trailmanor.com or contact your TrailManor dealer. (For floorplans, see Page 4)

From A Woman's Point of View

*A new column from Dorie Dew.
Dorie owns a 2006 TrailManor 2720.*



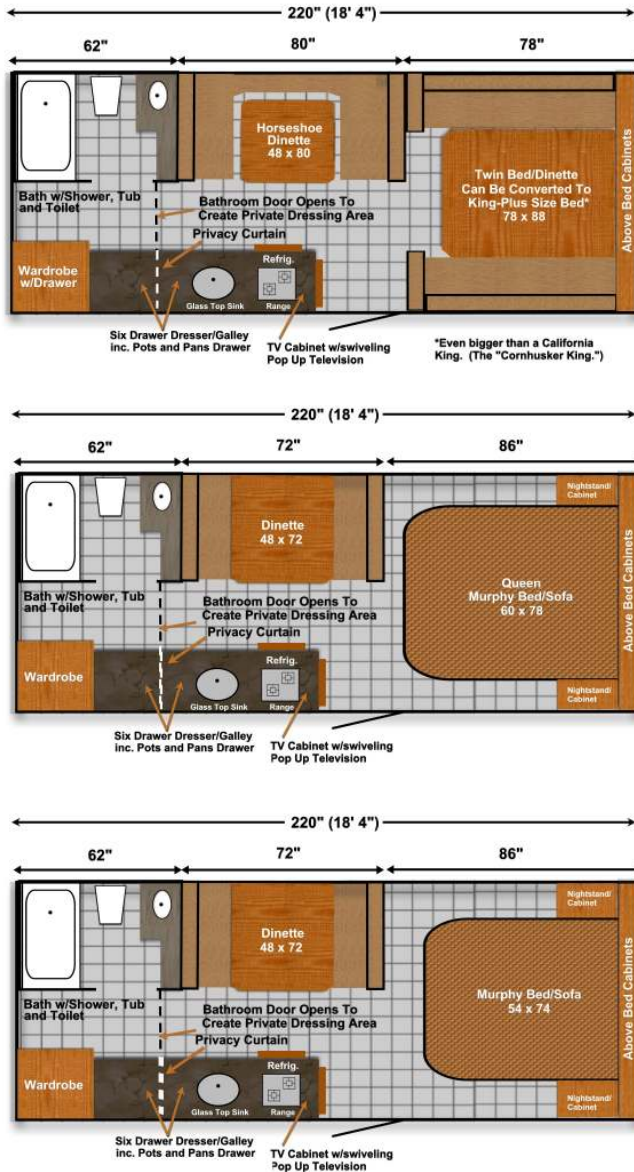
It was risky, especially for a woman traveling solo. But Burr Trail and the red rock scenery of Capitol Reef and the Waterpocket Fold of Utah are calling me. I am promised towering slickrock cliffs and a host of other-worldly formations of Grand Staircase-Escalante National Monument and ending with the Glen Canyon National Recreation Area where the road stops at Bullfrog Marina on Lake Powell.

I am grateful for the compact nature of the Trailmanor. There are 60 plus miles, including switchbacks with room for only one vehicle. Drop-offs in places are made scarier by the loose nature of the soil spilling over the edge of the road. The sign said "Extreme Grades Sharp Curves". There was truth in that advertising.

Leaving the magical hoodoos and tourist-ready convenience of Bryce Canyon behind, I head out on the National Scenic Byway 12 toward Burr Trail. Just out of the tiny corner of a town called Boulder, there is water. I know this only because smears of cottonwood trees and greenery spot an otherwise rock-dry landscape. So, I am maneuvering through thick a patch on a side path that does not quite qualify as a road at this particular juncture. Branches poke across above me and unruly shrubs reach out. It is hot until I reach a deep canyon just 25 feet across, where sunlight does not

Continued Page 4

RISE by TrailManor Floorplans



From A Woman's Point of View (cont.)

penetrate. Staring up the sides of the red rock, nature's million-year-old artwork reaches up to the sky.

Later, the geographical formation known as the Waterpocket Fold, spreads out before me. North America's largest exposed monocline is a vast range of old and new rock strata turned over onto itself. For a geologist, the scene is a scientific study in Continental shifts formed and re-formed across millions of years. As a traveling tourist, the huge curving of earth and stone is simply a thing of beauty.

The views are worth the risk. The Trailmanor made it possible to be here in terrain that few motor homes or travel trailers will (or should) venture into.



Tech Talk With Ed Lytle

If you're running a little late getting started this year, here's a checklist for bringing your TrailManor out of winter storage:

- Clean the exterior, clean & air out the interior
- Check for insects/rodents in the interior
- Look for deterioration and other signs of damage to the exterior & interior
- Ensure the battery is functioning properly
- Have the water system flushed
- Check the functionality of appliances
- Make sure all your equipment is functioning properly
- Check tires, lug nuts & possibly repack bearings

TrailManor

TrailManor Manufacturing Company, LLC
 General Offices: P.O. Box 397, Hartington, NE 68739
 Mfg. Plants: 1202 McGhee Lane Jacksboro, TN 37757
 423.563.6685

www.trailmanor.com

facebook

Like us on Facebook:
www.facebook.com/trailmanor