

# Cottage

by Cedar Creek











Enjoy the comfort of your very own Cottage at your favorite vacation spot. The Cedar Creek Cottage offers the convenience of a park trailer with the amenities of a fine vacation home. Its wide body design and eight feet of interior height provide roomy comfort for family and guests. Whether at the lake, in the mountains, or your favorite campground, your Cottage welcomes you with upscale features created to pamper and appease.





A



B



C



**D**



**E**

- A** The residential kitchen is outfitted with a full size range and oven and an abundance of cabinet storage.
- B** Model 40CFL features a convenient lunch bar for casual dining.
- C** The large home-style refrigerator with ice maker is standard in all models.
- D** The built-in desk complements the entertainment center complete with 32" flat screen HD TV and fireplace.
- E** The dining chairs offer extra storage space underneath the seat.





**A**

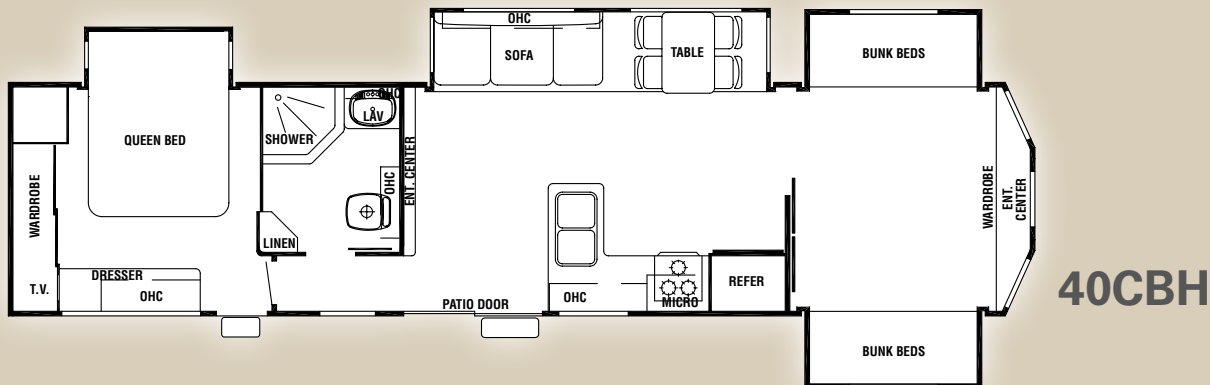
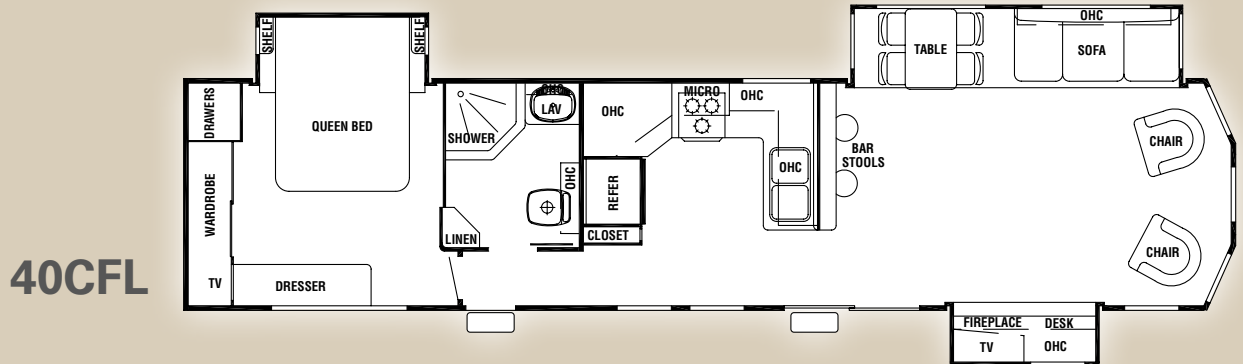
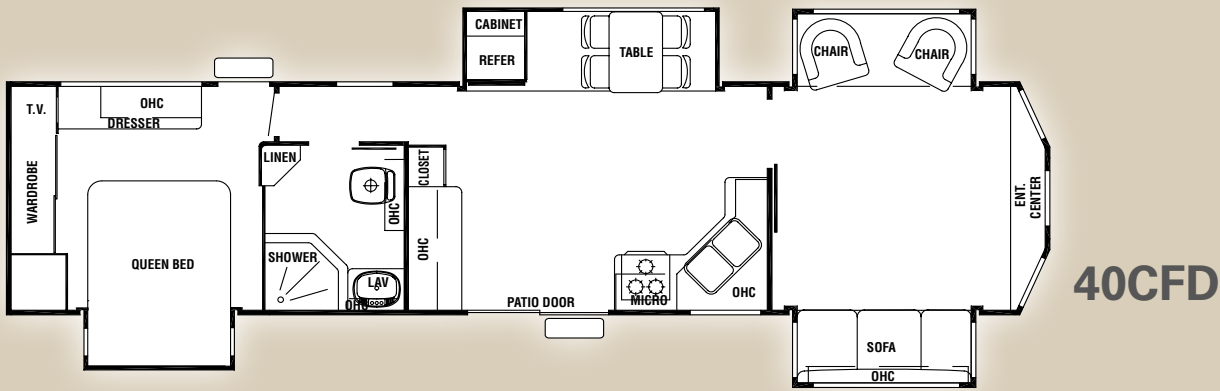


**B**



**C**

- A** The Cottage B & B Package includes many upscale bed and bath luxuries.
- B** The large dresser, with deep drawers and cabinet, adds storage capacity to the bedroom.
- C** The radius-style, residential fiberglass shower is a space-saving feature of this roomy bathroom.



Model	40CFD	40CFL	40CBH
Exterior Length	41'9"	39'6"	39'6"
Exterior Height w/Air Conditioner	12'10"	12'10"	12'10"
Exterior Width	102"	102"	102"
Bedroom Interior Height	8'	8'	8'
Hitch Weight	2042	1371	1456
Axle Dry Weight	9030	8620	8852
Unloaded Vehicle Weight	11072	9991	10308
GVWR	14042	13371	13456
Gross Cargo Capacity	2970	3380	3148
Dual Axles (2)	6000# Straight	6000# Straight	6000# Straight
Wheel Size	16 x 6	16 x 6	16 x 6
Tire Size	LT235/85R/16E	LT235/85R/16E	LT235/85R/16E
Awning Size	18'	18'	18'
Furnace Size	42 BTU	42 BTU	42 BTU
Water Heater Size	20	20	20
Demand Fresh Water Capacity	76	76	76
Black and Grey Water Capacity	40 / 40 / 40	40 / 40 / 40	40 / 40 / 40
Sleeping Capacity	6	6	8

All Weights listed above are base weights. Weight capacities +/- 5%. NOTE: Model number of any particular unit does not necessarily reflect the overall length of the unit itself.



# Cottage

by Cedar Creek

## Standards

- (2) LaZ-Boy® Fabric Recliners
- 8' (96") Interior Height
- 102" Wide Body
- 12 Volt Heating Pads on all Fresh/Gray/Black Tanks
- 12 Volt Battery Disconnect
- 15 Cu. Ft. Residential Refrigerator w/Ice Maker
- 50 Amp Service
- 7' (84") Tall Slide-Outs
- B&B Package (Luxurious Bedroom & Bathroom Upgrades)
- Braced & Wired for 2nd Air Conditioner
- Ceiling Fans (W/A)
- Detachable Hitch
- Fireplace (W/A)
- Freestanding Table w/4 Chairs
- Halogen Flat Ceiling Lights
- One Piece Residential Fiberglass Shower (Radius)
- Porcelain Toilet
- Tinted Safety Glass
- Solid Ash Cabinet Doors
- Totally Enclosed & Insulated Underbelly
- True High Gloss Gelcoat Exterior
- New Customized Full Front Gelcoat Cap w/Picket Fence Design

## Cedar Creek Cottage Package

- (1) 32" LCD Flat Panel HD Television w/Full Dolby Digital
- Dolby Prologic Surround Sound Stereo w/DVD/CD/Tuner
- 30" Residential Microwave
- Thermopane Patio Door
- Hide-A-Bed Air Mattress Sofa
- True Owens Corning® Gelcoat Exterior
- Black Tank Flush
- Sealed Bearing System
- 20 Gallon Electric Water Heater
- 15,000 BTU Air Conditioner
- Fantastic Fan w/Rain Sensor in Kitchen
- 9100 Electric Awning
- Entire Water Filtration System
- Cedar Creek Switch Control Center
- Wineguard HD Ready Pre-Wire

DEALER



A Berkshire-Hathaway Company

Forest River, Inc. / 501 Hawpatch Road / Topeka, IN 46571

Ph: 260-593-2404 / Fax: 260-593-2447

Visit our website at [www.forestriverinc.com](http://www.forestriverinc.com)

F-66-151 2008 Forest River, Inc. Litho U.S.A.

All illustrations and specifications contained in this literature are based on the latest product information at the time of publication. Forest River, Inc. reserves the right to make changes in prices, colors, materials, equipment and specifications at any time without notice and assumes no responsibility for any error in this literature. All units are shipped F.O.B. Topeka, Indiana. • CONSULT YOUR LOCAL DEALER FOR WARRANTY INFORMATION