

FORESTER

Presented by Forest River

With residential glass lighting, stainless steel appliances and upgraded fabrics, the Forester by Forest River has an interior that distinguishes itself from the competition. A fiberglass roof and high gloss sidewalls give the Forester the durability and curb appeal not found on other class C Motorhomes. Forester: Where luxury meets affordability.

SPECIFICATIONS

FORD CHASSIS	2301	2651S	2861DS	2901SS	2941DS	3101SS	3121DS	3161S
WHEELBASE	158"	188"	202"	188"	198"	220"	212"	212"
GVWR	14500	14500	14500	14500	14500	14500	14500	14500
GAWRR	9500	9500	9500	9500	9500	9500	9500	9500
GAWRF	5000	5000	5000	5000	5000	5000	5000	5000
UVW	10110	11745	12750	11535	12535	12895	12870	12510
GCWR	20000	20000	20000	20000	20000	20000	20000	20000
NCC	4390	2755	1750	2965	1965	1605	1630	1990
FUEL CAPACITY (GAL)	55	55	55	55	55	55	55	55
DIESEL ENGINE OPTION	YES	NA	NA	YES	NA	NA	NA	NA
HITCH RATING	5K/500	5K/500	5K/500	5K/500	5K/500	5K/500	5K/500	5K/500
LENGTH - BUMPER TO BUMPER	24'-4"	27'11"	30'-10"	30'2"	30'-11"	31'-11"	31'-11"	31'-11"

CHEVY CHASSIS

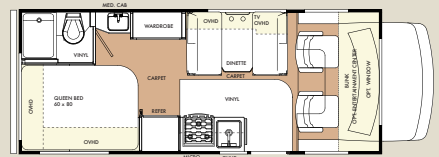
WHEELBASE	159"	NA	NA	189"	199"	221"	NA	213"
GVWR	12300	NA	NA	14050	14050	14050	NA	14050
GAWRR	8600	NA	NA	9450	9450	9450	NA	9450
GAWRF	4300	NA	NA	4600	4600	4600	NA	4600
UVW	0	NA	NA	***	***	***	NA	***
GCWR	16000	NA	NA	17600	17600	17600	NA	17600
NCC	12300	NA	NA	***	***	***	NA	***
FUEL CAPACITY (GAL)	57	NA	NA	57	57	57	NA	57
HITCH RATING	3.5K/350	NA	NA	3.5K/350	3.5K/350	3.5K/350	NA	3.5K/350
LENGTH - BUMPER TO BUMPER	24'-8"			30'7"	31'4"	32'-4"		32'4"

CAPACITIES & DIMENSIONS

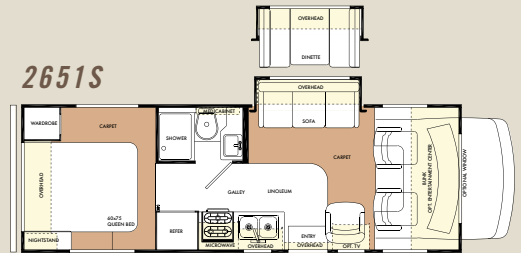
EXTERIOR HEIGHT WITH A/C	11'-2"	11'-2"	11'-2"	11'-2"	11'-2"	11'-2"	11'-2"	11'-2"
EXTERIOR WIDTH	101"	101"	101"	101"	101"	101"	101"	101"
INTERIOR WIDTH	95.5"	95.5"	95.5"	95.5"	95.5"	95.5"	95.5"	95.5"
INTERIOR HEIGHT	84"	84"	84"	84"	84"	84"	84"	84"
FRESH WATER (GAL)	44	38	44	40	40	40	40	40
GREY WATER (GAL)	30	27	47	47	35	47	30	35
BLACK WATER (GAL)	30	27	27	27	35	27	30	35
L.P. CAPACITY (GAL)	9.8/19.6D	9.8	9.8	9.8/19.6D	9.8	9.8	9.8	9.8
AWNING LENGTH	9'-6"	12'-6"	16	14	16	16	15	16
WATER HEATER (GAL)	6	6	6	6	6	6	6	6

*** Not available at time of printing.

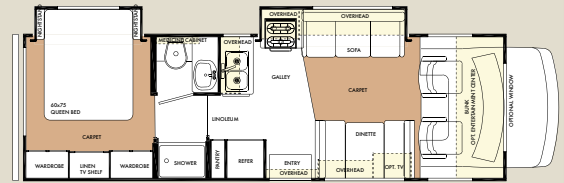
2301



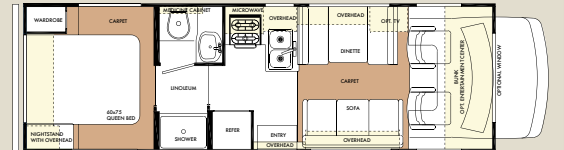
2651S



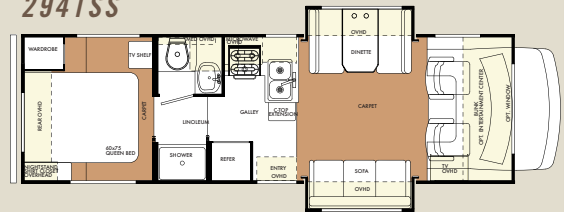
2861DS



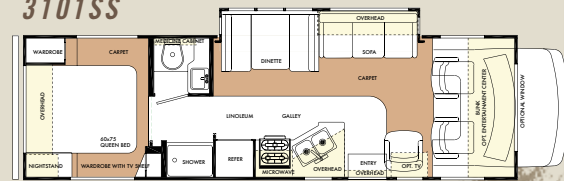
2901SS



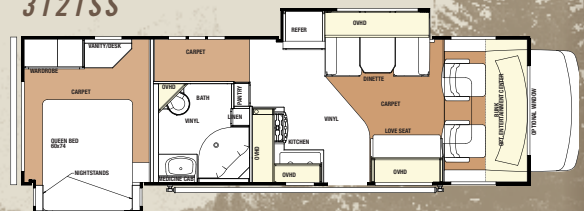
2941SS



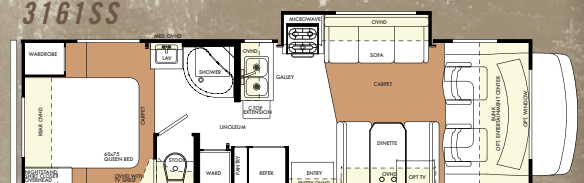
3101SS



3121SS



3161SS



Shown above, the Forester 3121SS with taupe skirt paint.

FORESTER STANDARDS & OPTIONS

WARRANTY: STANDARD FEATURES

- 12 Months/ 12,000 miles basic limited warranty
- Limited Bumper-to-Bumper 3 years/36,000 miles chassis warranty (Ford)
- Limited 5 years/ 60,000 mile Powertrain warranty (Ford)
- Limited 3 years/36,000 mile warranty (Chevy)
- Limited 5 years/100,000 Powertrain warranty (Chevy)

SYSTEMS: STANDARD FEATURES

- Battery disconnect
- Water heater bypass kit
- Deep cycle coach battery
- 30 amp, 12 volt distribution panel & 30' power cord
- 55 amp, 12 volt power converter
- Six gallon gas/electric electronic ignition DSI water heater
- 30,000 BTU electronic ignition furnace
- Arctic package
- Remote emergency start
- Cable/TV and phone jacks
- 13.5 K BTU ducted roof air conditioner
- 40G Guardian generator
- Generator auto transfer switch

OPTIONAL FEATURES

- 4.0 Onan Microquiet generator
- King Dome HD ready satellite system
- Trac-King in-motion HD ready satellite
- Water filtration system
- 2nd auxiliary deep cycle coach battery
- 15K BTU air conditioner with heat pump

EXTERIOR

- 2" laminated high-gloss sidewalls, vacuum bonded with aluminum frame structure, steel backers & block foam insulation
- A & E electric awning

- A & E slide out awnings
- Fiberglass roof
- Stainless steel wheel liners
- Lockable rotocast pass-through storage compartments
- Patio Light
- Entry door with screen door & dead bolt door lock
- Fiberglass running boards
- All radius style exterior doors
- Entry assist handle
- "Easy-Dump" valve dump stations
- "Easy-Fill" exterior water fill stations
- 110 volt, GFI protected exterior receptacle
- Tinted sliding windows
- Deluxe break-away mirrors
- 5,000 lb. tow hitch with 7-pin connector (Ford)
- 3,500 lb. tow hitch with 7-pin connector (Chevy)
- Spare Tire
- Roof Ladder
- Outside shower
- Exterior security light

OPTIONAL FEATURES

- Electric entry step
- Outside Shower
- Slide-out battery tray
- Bigfoot hydraulic automatic leveling jacks
- Two exterior paint packages
- Deluxe break-away heated/remote mirrors

CAB AREA

- AM/FM/CD player
- Upgraded driver and passenger seats
- Cab area privacy curtains
- Dual 12 volt power points
- Cruise control
- Power windows and door locks

OPTIONAL FEATURES

- Color back-up camera with monitor
- Deluxe wood grain dash

GALLEY AREA

- Single lever chrome faucet
- Three burner range with oven
- 6 cubic foot refrigerator/freezer with brushed nickel fronts
- Range hood with fan and light
- Residential-style drawer construction with solid wood fronts and ball-bearing drawer guides
- Microwave oven
- Flip-up countertop extensions
- Sink cover

OPTIONAL FEATURES

- Raised wood refrigerator panels
- Convection microwave IPO oven

BATHROOM AREA

- Large medicine cabinet with mirrored cabinet doors
- Deep sink with dual control faucet
- Porcelain toilet
- Frosted glass shower door (NA 2300, 2450S & 2600S)
- Brushed nickel bath amenity package (towel bar, tissue, toothbrush & soap holder)
- Electric roof vent fan
- Wall mount mirror
- Molded ABS shower pan & surround
- Shower head with flexible hose extension
- Shower skylight
- Light switch

BEDROOM AREA

- Innerspring mattress
- Bedspread with pillow shams
- TV shelf with AC receptacle & cable TV jack

- Adjustable brushed nickel reading lights
- Night shades with upscale window treatments
- Bedroom stereo speaker package
- Bi-fold privacy door
- Light switch
- Rear bedroom window

OPTIONAL FEATURES

- Twin beds with innerspring mattresses (Available IPO north-south nonslide queen bed)
- Bunk beds with innerspring mattresses (Available IPO north-south nonslide queen bed)

LIVING ROOM AREA

- "Soft touch" vinyl padded ceilings
- Cherry or Maple wood cabinetry throughout with raised panel doors
- Brushed nickel handles
- Dream dinette
- 2-way sofa with convertible sleeping
- Night shades with deluxe window treatments
- Residential light fixtures
- 7 foot ceiling height
- Convenience center
- Light switches

OPTIONAL FEATURES

- Cab over entertainment center with 24" TV
- 19" flat panel TV w/ DVD
- DVD with premium surround sound
- 450 watt inverter
- Cab over bunk window
- Ultra Leather sofa
- Fantastic Fan
- 26" flatpanel LCD TV with DVD, surround sound and exterior hook-up

ESPRESSO



HAZELNUT



HIGGINS FERN



SANTA ROSA



A. CHERRY, B. MAPLE



Forest River, Inc. 914 C.R. 1 Elkhart, IN 46514
574.262.2212 800.445.2825 www.forestriverinc.com
www.forestriveraccessories.com

YOUR FORESTER DEALER

All specifications contained herein are based on the latest product information at time of printing. Forest River reserves the right to make changes in colors, materials, equipment and specifications at any time without notice and assumes no responsibility for any errors in this brochure. LITHO U.S.A FOR 0597