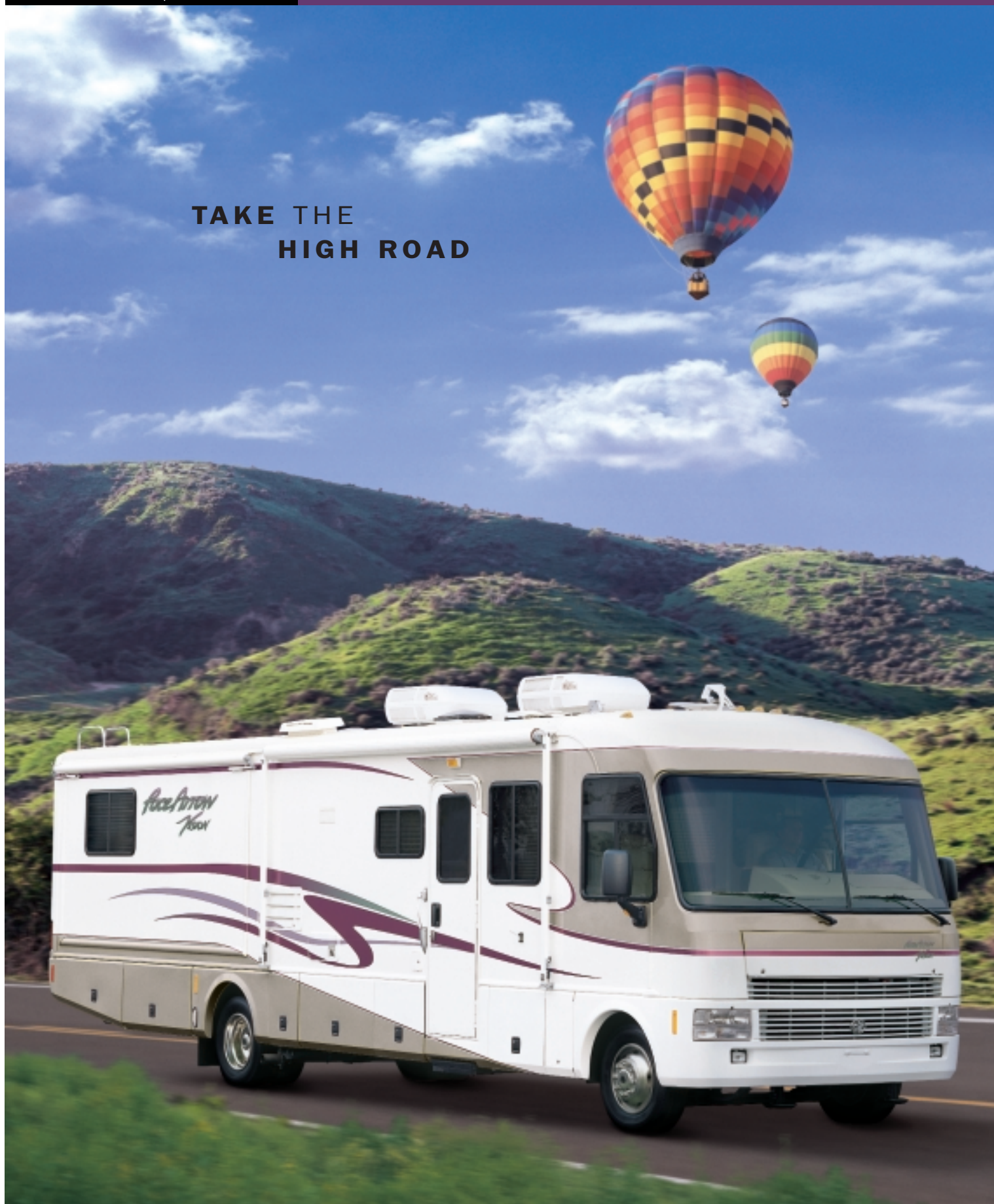


Face Arrow
7500V

2 0 0 1

FLEETWOOD.RV

**TAKE THE
HIGH ROAD**



Freedom

When was the last time you walked on clouds?

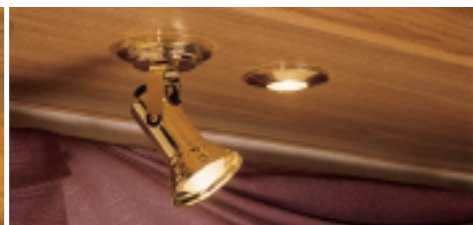
When the feeling of freedom that rises up from somewhere deep inside completely overwhelms you. Unexplainable freedom that makes you feel lighter than air.

Away from everyday life.

That space in time where you forget about the bills and the house, and just exist.



Elegant interior puts the Pace Arrow Vision in a class by itself with dual pane and tinted residential-style windows, and roof air vents in the front for better air flow.



Special decor lighting highlights the handcrafted wood cabinetry with a fit and finish that's second to none.



Innovative design and long-lasting value shows with the galley's oak plank flooring, name-brand appliances and solid countertops of Corian.®

Pace Arrow® Vision has a tradition of being the perfect host offering more standard features than any other Fleetwood Class A gas motor home.

Your elaborately appointed living room welcomes you with elegant, jacquard and tapestry woven fabrics, natural hardwood floors, and plush DuPont carpeting with Teflon® Advanced Carpet Protector. There are beveled mirrors throughout, and glass and brass decor lighting above the dinette and living area. Then, with the combination sofa/bed, turn

your living room into an extra bedroom, complete with built-in side table (optional on 36B and 35R), and a huge slide-out drawer hidden underneath.

During your fun-filled travels, you'll be spending time behind the wheel. So you'll meet, with great approval, the sophisticated wrap-around instrument panel, ergonomically designed for greater visibility and ease-of-use. And, at the helm, optional leather seating makes for a commanding elegance.

So make the Pace Arrow Vision part of your extraordinary life. Go up, up and away, and show the world who's on top.



*Up, Up,
in a*



1



2



3

1 Pace Arrow Vision's 5.5kW ultra-quiet Onan® generator provides 110V service and comes with a 3-year warranty.

2 On the driver's side, hookups are easily accessed and color-coded for quick setup. Adjacent is the wash station for convenient outside cleaning.

3 Every Pace Arrow Vision comes prewired for an optional Winegard® satellite dish.

4 A coach-length, aluminum drip rail prevents discoloring of the sidewall.

5 Polyethylene storage compartments are non-corrosive to prevent rusting.

6 Practical, single die-cast metal paddle latches are flush-mounted for a luggage door system that's durable and easy-to-operate.

7 Pace Arrow Vision's windshield is designed to prevent moisture intrusion and provide an unobstructed panoramic view.

Your senses expand. You see things differently—perhaps clearer.

You're sure your feet aren't touching the ground. At that moment, you completely understand just how awesome life is. And you're grateful.

When was the last time you walked on clouds?

We'll ask you when you get back.



Pace Arrow Vision brings exquisite style and function into the bedroom with a vanity that turns into a table that's wired for your computer and phone (Available on 35R only).



The driver's cockpit is user-friendly with automotive-style gauges and easy-to-reach controls. The out-of-the-way TV lifts up for cabin viewing.



Lots of storage with residential-style cabinets and the large, double stainless steel sink make preparing meals a pleasure.



Pace Arrow Vision's bedroom lavishes your desires with reading lights, coordinated bed and window fabrics, and convenient nightstands.

Reach your destination in style with the finer things in life. View the world outside with a sense of intimacy, through the residential-style window treatments. Or watch your favorite program on a 20" Panasonic® front TV. Its speakers are hidden in the integrated design of the cab—an example of the Vision's well-engineered styling.

The world of technology is never far away with an in-the-dash computer-ready workstation, complete with keyboard drawer and padded flip-down wrist rest for comfort.* And if that isn't

enough, your bedroom vanity quickly turns into a table that is also computer ready (Available on 35R only).

Your stylish vacation home has plenty of drawer space in the bedroom and a full-size wardrobe to keep your hanging clothes looking fresh. Then adjust your bedroom lighting with dual switches for whatever mood you're in.

One thing's for certain, no matter which model you choose, your life with Pace Arrow Vision is a natural high.

* Not intended for use while in transit. Unsecured items are hazardous during traveling.
Panasonic® is a registered trademark of Matsushita Electric Corporation of America.

Tease the Air and Stir the Soul.

There's no better way to see and experience life beyond the ordinary, than with a Pace Arrow® Vision motor home.

The gracefully-styled Pace Arrow Vision comes from a long line of innovative and well-appointed motor homes. From bow to stern, every aspect of the interior is crafted precisely for ease and comfort. Its residential-style overhead cabinets in the galley, slide-out pantry system and easy-to-stand "toe kick" area, below the lower cabinets, feel like home. Especially with the large, double stainless steel sinks with countertops and backsplash made of Corian® that provide lasting beauty and durability. Notice the name-brand appliances ready to help you prepare the best of meals—names like Sharp®, Magic Chef® and Dometic®.

With synchronized rack and pinion engineering, the EZ Glide® Slide-Out System effortlessly expands the size of living room, dinette, galley or bedroom areas for the great indoors.

And, when you're ready to retire for the night, use your pleated day/night shades in the living room and nightshades in the bedroom for privacy. You'll appreciate not only the special brass and glass decor lighting, but also the added fluorescent lighting to make getting around the coach a bit easier.

Spending time with Pace Arrow Vision will be heavenly. So come explore your new life in style.



Features for 2001 Pace Arrow Vision

Our engineering may set us apart from the rest, but the things you'll notice most when you and your family take a trip, are the top-of-the-line features. Here are but a few of the items that make life on the road with Pace Arrow Vision memorable.



The bedroom feature cabinets include this convenient clothes hamper.



For on-the-road convenience, you'll appreciate the optional residential-style washer/dryer (optional on 36B and 36Z).



Make finding your way around the country easier with the optional satellite-connected VDO Dayton Model MS 5000 GPS navigation system, complete with software.



An optional electronic climate control system with dual A/C controls enables a separate climate in the front and rear of the coach.

Computer workstation,* lift-up TV, storage for maps, and cupholders—practical, functional, and all within reach.



Get "live" sound with the DHS Home Theater Sound System.

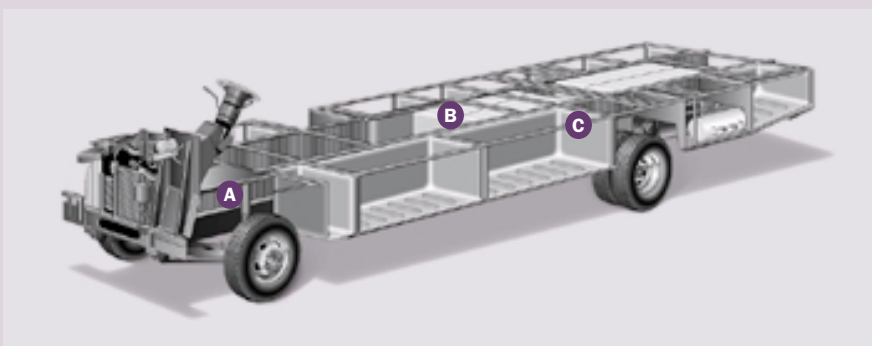


Pace Arrow Vision's basement space includes lots of storage for your gear.



The Power Platform Makes the Difference

Pace Arrow Vision's quality begins long before the features come on board. We begin by building on our exclusive Power Platform, with Paco Beam, a unique truss design welded together using tubular steel that's durable, strong, and dependable. The result is a quiet, and nearly flawless ride, increased floor strength, and substantially more storage space below. An all-steel foundation further reduces stress loads on the sidewalls and minimizes chassis flex on uneven roads.



A Steel I-beams are welded the length of the chassis for enormous weight-bearing ability.

B Water tanks run horizontally down the center of the frame for balance.

C Beefy steel outriggers firmly cradle all exterior compartments and add stability.

Drawing is for illustrative purpose only to highlight aspects of motor home construction. Actual motor home design depends on model and is subject to change.

* Not intended for use while in transit. Unsecured items are hazardous during traveling.

2001 Pace Arrow Vision Standard Features

Appliances

- Front 20" Panasonic® TV with Lift
- Smoke Detector/Alarm
- LPG Detector/Alarm
- CO Detector/Alarm
- 6-Gallon, Quick-Recovery Water Heater with D.S.I. (Gas/Electric)
- 22" 3-Sealed Burner, High-Output Cooktop with Oven
- Light/Power Range Hood
- Monitor Panel
- Folding Range Cover—Flush Mount Solid Surface Top
- Dual Roof A/C—High Efficiency with Solar Panel
- Water Heater Bypass
- Porcelain Toilet with Water Saver
- Toilet Tank San-T-Flush™ System
- 8-cu. ft. Dometic® Double Door Refrigerator
- Single-Lever Galley Faucet
- Water Filter with Faucet
- Demand Water Pump with Filter
- Power Bath Vent
- TV Antenna
- Fan-Tastic® Power Roof Vent
- Fire Extinguisher
- Telephone Jack in Dash & Bedroom
- Rear Speakers in Bedroom

Body Structure

- Vacubond Upper/Lower Floor
- Vacubond Walls w/Smooth, High-Gloss Exterior Fiberglass
- Aluminum Wall/Ceiling Framing
- Interlocking Aluminum Extrusions
- Radius Roof with Ducted A/C
- Rubber Roof
- Power Platform

Electrical

- Patio Receptacle
- 120V/12V AC/DC Converter Central Electrical Panel
- 120V/12V Wire Raceways
- Water Pump Switch
- 5.5kW Onan® Generator
- 30-amp Service
- Wall Switches
- ECC Climate Control
- Dual 6V/Deep-Cycle 218-amp House Batteries
- TV/VCR Ready

Exterior

- Fiberglass Front/Rear Cap
- Swing-Down Engine Access Door
- Fiberglass Front Quarter Panels
- Fiberglass Rear Wheel Well Trim
- Aerodynamic Styling
- Entry Door with Deadbolt Latch
- Slider Windows (Front), Torque Windows (Bedroom)
- Aluminum Front Grill
- Pace Arrow Vision in Chrome Finish Logo Badging

Exterior (cont.)

- Utility Compartment with Exterior Shower
- Roof Ladder
- Exterior Assist Handle
- Heated Remote Rear View Mirrors
- Park Cable Receptacle
- Awning Rail/Drip Molding (Both Sides)
- Power Entry Step
- Porch Light
- 3 Colorway Graphics to Match Decor
- Lower Body Accent Paint

Exterior Automotive

- Large, Curved Aerodynamic Windshield
- Undercoating
- Stainless Steel Wheel Simulators
- Mud Flaps
- Underhood Utility Light
- Steel Surface on Bulkhead
- Trailer Hitch with 7-point Electrical Hookup
- Halogen Headlights
- Driving Lights
- Rear Vision Camera
- Third Brake Light
- Docking Lights
- Single-Motor Windshield Wipers with Wet Arm
- Ford® Chassis 6.8L Triton™ V10 Engine

Exterior Storage

- Insulated Luggage Doors
- Single Paddle/Metal Latches
- Continuous One-Piece Bulb Seal
- Hidden Stainless Steel Latch Rods
- Gas Lift Strut Supports—Two Struts Per Door
- Lighted Compartments
- Aluminum Seal Frames
- Pass-Through Storage

Interior

- 3 Interior Decors
- Woven Jacquard Feature Fabrics
- Skylight in Tub/Shower
- Oak Wood Grain
- Wall-to-Wall Nylon Carpet with Carpet Pad
- Vinyl Floor Covering—Bath Only
- Wood Drawers
- Roller Guide Drawer Slides with Transit Ship Locks
- Radius Corner Cabinetry
- Brass Finished Cabinet Hardware
- Driver/Passenger & Lounge Reclining Bucket Seats
- Mini Blinds in Galley (Metal)
- Bedspread with Decor Pillows
- Restonic® Deluxe Pillow Top Innerspring Mattress
- Oak Cabinet Doors & Drawers
- Corian® Galley Countertops
- Crown Molding
- Slide-out Pantries with Transit Locks
- Oak Plank Flooring in Galley

Interior (cont.)

- Headboard (Except 35R)
- Beveled Mirrors
- Slide-Out Dinette Bins with Locks
- Cedar Lining in Wardrobe
- Window Coverings—Day/Night Shades
- Wainscot Paneling in Bedroom
- Oak Bath Door Trims
- Oak Wood Trim Table Tops
- Trash Basket in Galley
- ABS Molded Tub/Shower with One-Piece Enclosure
- Bright Brass Bath Accessories
- Residential Seat Styling
- Entry Rail (Oak & Brass)
- Oak-Raised Panel Cabinet Doors
- Adjustable Cabinet Shelves (Selected Cabinets)
- Sink Cutting Board
- Solid Divider Doors
- Large, Double Stainless Steel Sink

Interior Automotive

- Intermittent Wiper Control
- Double-Swivel Sun Visors with Map Pockets
- Driver/Passenger Side Window Shade
- Engine Cover Convenience Tray
- Driver's Door with Power Window Lift
- Cruise Control
- Low-Profile Engine Cover
- Radio with Cassette AM/FM/MX—Electronic Tuning
- Auxiliary Start Circuit
- Battery Disconnect System
- Auto A/C Heater Combo
- Radio Switch—Main/Auxiliary
- Soft Surface Automotive Dash
- Computer Workstation in Dash
- Sculptured Driver/Passenger Side Panels
- Tilt Steering Wheel
- Driver/Passenger Captain's Chairs with Reclining Back/Slide Controls
- Dash Fans
- 3-Point Seat Belts on Driver/Passenger Seats

Interior Lighting

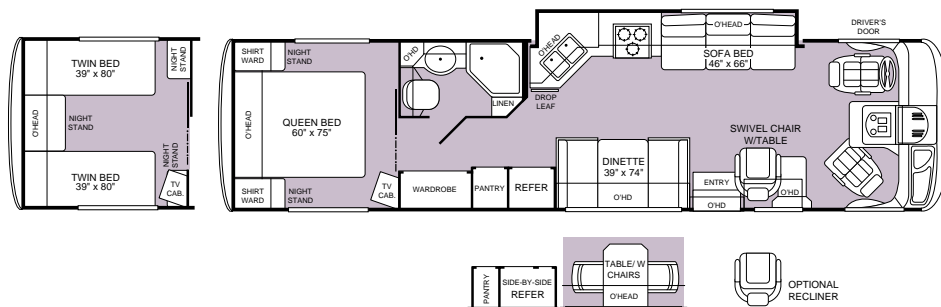
- Wardrobe Lighting
- Chandelier
- Fluorescent Ceiling with Dual Bulb
- Decor Lighting
- Incandescent Lighting
- Wall Sconces
- Make-Up Lights in Bath

Platform Construction

- Basement Floor Configuration
- Heated Water & Holding Tank Compartments
- Polyethylene Luggage Compartment Boxes
- Paco Beams
- Steel Outriggers
- Box Vibration Isolators

2001 Pace Arrow Vision Floor Plans

Model 34C

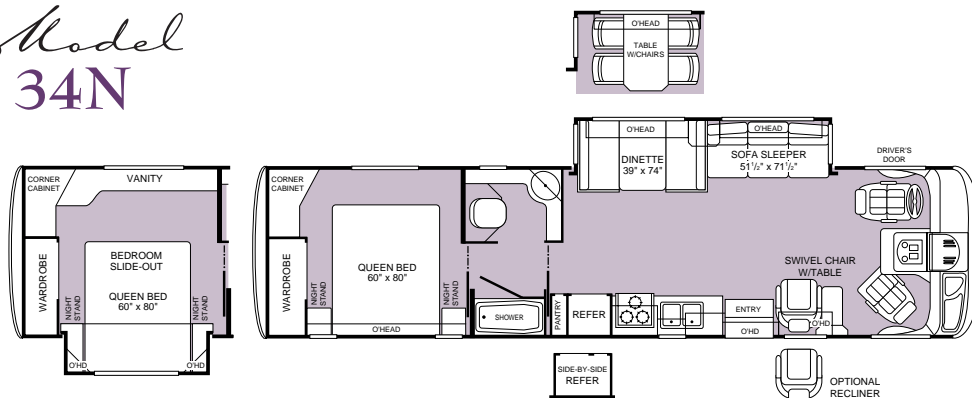


- Island Queen Bed or Optional Twin Beds
- Dual Shirt Wards and Nightstands

- Dinette or Optional Table with Chairs
- Optional Side-by-Side Refrigerator
- Fully Enclosed Bathroom

- Galley/Living Room Slide-Out with Sofa Bed
- Swivel Chair with Table or Optional Recliner

Model 34N



- Optional Bedroom Slide-Out with Vanity
- Island Queen Bed

- Dinette or Optional Table with Chairs
- Optional Side-by-Side Refrigerator

- Living Room Slide-Out with Sofa Sleeper
- Swivel Chair with Table or Optional Recliner

Model 35R



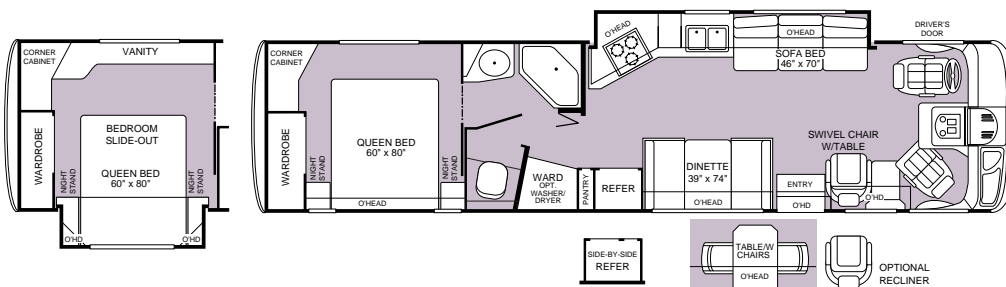
- Double-Slide w/Queen Bed and Wardrobe
- Bedroom Feature Cabinets w/Integrated Vanity
- Optional Side-by-Side Refrigerator
- Fully Enclosed Bathroom
- Living Room Slide-Out with Sofa Bed
- Dinette or Optional Table with Chairs
- Swivel Chair with Table

Model 36B



- Optional Bedroom Slide-Out with Vanity
- Island Queen Bed
- Swivel Chair with Table
- Optional Washer/Dryer
- Optional Side-by-Side Refrigerator
- Living Room Slide-Out with Sofa Bed or Optional Sofa Sleeper
- Dinette or Optional Table with Chairs

Model 36Z



- Optional Bedroom Slide-Out with Vanity
- Private Toilet
- Swivel Chair with Table or Optional Recliner
- Optional Washer/Dryer
- Optional Side-by-Side Refrigerator
- Galley/Living Room Slide-Out with Sofa Bed
- Dinette or Optional Table with Chairs

2001 Pace Arrow Vision Options

Appliances	34C	34N	35R	36B	36Z
22" 3-Sealed Burner Cooktop	OPT	OPT	OPT	OPT	OPT
12 cu. ft. Dometic® Side-by-Side Refrigerator w/Ice Maker	OPT	OPT	OPT	OPT	OPT
8 cu. ft. Dometic® Double Door Refrigerator w/Ice Maker	OPT	OPT	OPT	OPT	OPT
Sharp® Microwave Oven	N/A	STD	STD	STD	N/A
Sharp® Convection Microwave	STD	OPT	OPT	OPT	STD
Sharp® CSA Convection Microwave	OPT	OPT	OPT	OPT	OPT
Washer/Dryer	N/A	N/A	N/A	OPT	OPT
Furnace 20M BTU/34M BTU Dual	N/A	N/A	N/A	STD	STD
Furnace 20M BTU/20M BTU Dual	N/A	STD	STD	N/A	N/A
Furnace 34M BTU	STD	N/A	N/A	N/A	N/A
Fan-Tastic® Power Roof Vent—Bathroom	OPT	OPT	OPT	OPT	OPT
Panasonic® VCR/VHS	OPT	OPT	OPT	OPT	OPT
Rear 13" Panasonic® Television with Remote	OPT	OPT	N/A	OPT	OPT
Multiple CD Changer	OPT	OPT	OPT	OPT	OPT
DSS Manual Lift/Satellite Dish	OPT	OPT	OPT	OPT	OPT
Home Theater Sound	OPT	OPT	OPT	OPT	OPT
Electrical	34C	34N	35R	36B	36Z
7.0kW Generator—Onan® Dual A/C Ready Upgrade	OPT	OPT	OPT	OPT	OPT
CSA Package	OPT	OPT	OPT	OPT	OPT
Exterior	34C	34N	35R	36B	36Z
4-Pt. Manual Hydraulic Leveler—Ford®	N/A	N/A	N/A	N/A	N/A
Awning—USA	OPT	OPT	OPT	OPT	OPT
Front Mask—Bra	OPT	OPT	OPT	OPT	OPT
Interior	34C	34N	35R	36B	36Z
Folding Shower Door	N/A	N/A	N/A	STD	N/A
Glass Shower Door with Bright Brass Frame	STD	STD	STD	N/A	STD
Lounge Recliner	OPT	OPT	OPT	OPT	OPT
Leather Swivel Recliner	OPT	OPT	OPT	OPT	OPT
Dinette Table and Chairs with Free-Standing Extension	OPT	N/A	N/A	N/A	OPT
Coffee Table	OPT	OPT	OPT	OPT	OPT
Interior Automotive	34C	34N	35R	36B	36Z
CB Radio Ready	OPT	OPT	OPT	OPT	OPT
Stereo AM/FM with CD player	OPT	OPT	OPT	OPT	OPT
Power/Seat—Driver	OPT	OPT	OPT	OPT	OPT
Power Fabric Driver/Passenger Seats	OPT	OPT	OPT	OPT	OPT
Driver/Passenger Leather Seats with Power Driver	OPT	OPT	OPT	OPT	OPT
Slide-Out	34C	34N	35R	36B	36Z
Galley—Galley/Sofa	STD	N/A	N/A	N/A	STD
Living Room—Dinette/Sofa	N/A	STD	STD	STD	N/A
Free-Standing Dinette Table & Chairs	N/A	OPT	OPT	OPT	N/A
Bedroom—Queen Bed & Wardrobe	N/A	N/A	STD	N/A	N/A

What happens when you've been setting the standards of RV quality for over 50 years?

You set them even higher. Our customers expect us to. As a matter of fact, first-time RV buyers, who bought other manufacturers' RVs, tell us they wish they'd spent a little bit more for better quality. That's why experienced buyers are more likely to buy a Fleetwood RV.* That's also why Fleetwood RV invests in people, systems and manufacturing quality that are second to none. This may make us a bit more expensive than some brands, but satisfied Fleetwood RV owners know we're worth it.

People... We hire engineers, designers and drafters from leading automotive design schools. Our front-line associates are well-trained, quality-minded men and women who take pride in their work. No other manufacturer has a larger, more professional team behind their products.



Systems... Our product development team uses state-of-the-art, computer-assisted-design (CAD)

technology to build in fit and finish right from the drawing board. Each product is meticulously documented with over 3,500 pages of engineering drawings. A computerized bill of materials details over 20,000 pieces that go into your motor home. And, a vehicle specific *Electronic Parts Catalog* shows 600–800 common parts... so, if you need a new part, your authorized Fleetwood RV service dealership knows exactly what you need. Some manufacturers may not invest the extra time and money to accurately document their products, which could cost you plenty in headaches and hassles down the road.

*Angus Reid RV Market Segmentation Study, 1998

2001 Pace Arrow Vision Specifications

Ford® Chassis	34C	34N	35R	36B	36Z
Engine LD	6.8L	6.8L	6.8L	6.8L	6.8L
Wheelbase	208"	208"	228"	228"	228"
GVWR lbs/kgs (1)	20,500/9,299	20,500/9,299	20,500/9,299	20,500/9,299	20,500/9,299
Front GAWR lbs/kgs (2)	7,000/3,175	7,000/3,175	7,000/3,175	7,000/3,175	7,000/3,175
Rear GAWR lbs/kgs (2)	13,500/6,124	13,500/6,124	13,500/6,124	13,500/6,124	13,500/6,124
Base Weight lbs/kgs (3)	16,020/7,267	16,390/7,435	17,020/7,720	16,710/7,580	16,650/7,552
GCWR lbs/kgs (4)	25,500/11,567	25,500/11,567	25,500/11,567	25,500/11,567	25,500/11,567
Hitch Rating/Tongue Weight lbs	5,000/500	5,000/500	5,000/500	5,000/500	5,000/500
Hitch Rating/Tongue Weight kgs	2,268/227	2,268/227	2,268/227	2,268/227	2,268/227
Fuel Capacity gal/lbs (6.1 lbs/gal)	75/457	75/457	75/457	75/457	75/457

Dimensions	34C	34N	35R	36B	36Z
Length (5)	34' 5"	34' 8"	35' 8"	36' 6"	36' 10"
Height (with A/C)	11' 11"	11' 11"	11' 11"	11' 11"	11' 11"
Width (maximum) (6)	102"	102"	102"	102"	102"
Interior Height (maximum)	79"	79"	79"	79"	79"
Interior Width (maximum)	96"	96"	96"	96"	96"

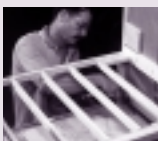
Liquid Capacities (Gallons/Liters)	34C	34N	35R	36B	36Z
Fresh Water Holding Tank (8.3 lbs/gal)	65/246	80/303	70/265	70/265	70/265
Grey Water Holding Tank (8.3 lbs/gal)	58/220	58/220	58/220	58/220	58/220
Black Water Holding Tank (8.3 lbs/gal)	42/159	44/167	42/159	42/159	44/167
Appliance LPG Tank (4.5 lbs/gal) (WC) (7)	25/95	25/95	25/95	25/95	25/95
Water Heater Tank (8.3 lbs/gal)	6/23	6/23	6/23	6/23	6/23

Metric Conversions:	Feet to meters: ft x .304 = meters	Lbs to kgs: lbs x .454 = kgs	Gallons to liters: gal x 3.78 = ltrs
---------------------	------------------------------------	------------------------------	--------------------------------------

1. **GVWR (Gross Vehicle Weight Rating):** Means the maximum permissible loaded weight of the motor home. The GVWR is equal to or greater than the sum of the unloaded vehicle weight plus the net carrying capacity.
2. **GAWR (Gross Axle Weight Rating):** Means the maximum permissible loaded weight a specific axle is designed to carry.
3. **BW (Base Weight):** Means the weight of the motor home without fuel, options, water, cargo or passengers.
4. **GCWR (Gross Combined Weight Rating):** Means the value specified by the motor home manufacturer as the maximum allowable loaded weight of this motor home with its towed vehicle. Towing and braking capacities may differ. Refer to Fleetwood and chassis manufacturer manuals for complete information.
5. Length taken from front bumper to rear bumper.
6. Excludes safety equipment and awnings.
7. Tank Manufacturer's listed water capacity (WC). Actual LPG capacity is 80% of water listing as required by the safety code.

IMPORTANT—PLEASE READ: Product information and photography included in this brochure were as accurate as possible at the time of publication. For the most current product information and changes, please visit our website at www.fleetwood.com or contact your local Fleetwood dealer. Subsequent refinements may be evident in the actual product. Prices and specifications are subject to change without notice. All weights, fuel, liquid capacities and dimensions are approximate. Fleetwood has designed its recreational vehicles to provide a variety of uses for its customers. Each vehicle features optimal seating, sleeping, storage and fluid capacities. The user is responsible for selecting the proper combination of loads to ensure that the recreational vehicle's capacities are not exceeded.

Manufacturing... We only do what we know we're best at—building a quality-finished motor home. When it comes to the appliances, doors, windows, and furniture, we partner with other recognized leaders to do what they know best... top names like Sharp®, Panasonic®, Dometic®, Restonic® and Flexsteel®. Some manufacturers will tell you partnering like this makes us final assemblers. We call it working smarter to bring you more value.



We build our cabinets and secure them to the floor before the walls go up to add strength, and help eliminate noises.

Quality... The quality outside reflects the quality inside—places where you can't see it, but where it really counts. For example, we use vacubonded sidewall construction that's required for the special needs of a motor home. Our new TuffPEX™ plumbing system is able to withstand temperatures as low as -40° F. And now offered on our mid- to high-end Class A motor homes, a new, revolutionary exterior sidewall material which contains no wood products to guard against swelling, rotting and delamination. Before any unit rolls off the line at each of our plants, it goes through a documented checklist containing hundreds of items specific to that product. It won't leave the plant until it has met our high standards. And, the list goes on.

For strength, noise reduction and insulation, composite sidewalls and floors are constructed of aluminum, plywood and polystyrene foam.



From the drawing board to the assembly line, we will continue to develop and manufacture quality products for our customers.

Fleetwood RV... Setting standards beyond your expectations.

Fleetwood's Far-Reaching Warranty and Service Program



Limited One-Year/ Three-Year Warranty

Leaving the Fleetwood dealership after you've purchased your RV doesn't mean leaving each dealer's commitment to your satisfaction behind.

OWNERCARE, Fleetwood's extensive warranty and service program, provides one/three year(s) of dedicated customer satisfaction. OWNER CARE stands out as one of the RV industry's most comprehensive programs and includes systems and applications, construction, no deductible and no service charge. See your nearest Fleetwood dealer for a full explanation of benefits and restrictions.

Fully Transferable

At Fleetwood RV, we're confident in our products and don't hesitate to stand behind them. Your newly purchased Fleetwood RV comes with one of the industry's most comprehensive warranties, fully transferable for the first 12 months.

National Coverage

Have a question about your new Fleetwood RV? We've got it covered. The nation's largest trained dealer network—ready, willing and able to provide you with the services you need to make every moment of owning your RV enjoyable. Over 1,100 Fleetwood dealers throughout the U.S. and Canada are available to you. With national coverage, peace of mind and complete satisfaction are just a phone call away.



An Extra Thank You

Ask your dealer about your Thousand Trails complimentary 30-day membership certificate. It's your chance to get going in your new RV and enjoy some scenic camping, plus our way of thanking you again for your purchase of a Fleetwood RV. For more information on your complimentary membership certificate, please call 1-800-205-0606. Happy (Thousand) Trails!



Fleetwood RV and Motor Sports: A Winning Team



Three wide in the first turn. 200 miles per hour on the back straight. Passing for the lead through the short chute. Nothing beats the excitement of NASCAR racing. Every year thousands of NASCAR fans and Fleetwood RV owners travel to races to support their favorite drivers, enjoy time with family and rekindle friendships.

RVs have become as much a part of motorsports as pit row and the checkered flag. That's why Fleetwood RV is a proud sponsor of 1999 Winston Cup Champion Dale Jarrett and the Robert Yates Racing Team.

As the number one RV manufacturer* in the country, our winning ways continue. Fleetwood RV is now the "Official Recreational Vehicle" at nine

*According to Statistical Surveys Jan. '99-Dec. '99

International Speedway Corporation racetracks.** And for Fleetwood owners, emergency service crews are available at select tracks to ensure a trouble-free weekend. While you're enjoying the race, be sure to look for the Fleetwood RV Prize Patrol and go home with some exciting giveaways.

So this weekend, pack up your friends and family and experience the thrill of cheering on Dale firsthand, in first-class style, with Fleetwood RV.

** Daytona International Speedway, Darlington Raceway, Talladega Superspeedway, California Speedway, Richmond International Speedway, Michigan Speedway, Watkins Glen International Speedway, Phoenix International Raceway, Homestead-Miami Speedway.



www.fleetwood.com

Visit our website to find a dealer near you, learn more about other Fleetwood products or purchase Fleetwood branded apparel. Or call 1-800-444-4905.

FOR CUSTOMER ASSISTANCE, call toll free 24 hours a day at 1-800-322-8216, visit our website, or you may write to Fleetwood Enterprises, Inc., P.O. Box 7638, Riverside, CA 92513-7638.

IMPORTANT—PLEASE READ: Product information and photography included in this brochure were as accurate as possible at the time of publication. For the most current product information and changes, please visit our website at www.fleetwood.com or contact your local Fleetwood dealer. Subsequent refinements may be evident in the actual product. Prices and specifications are subject to change without notice. All weights, fuel, liquid capacities and dimensions are approximate. Fleetwood has designed its recreational vehicles to provide a variety of uses for its customers. Each vehicle features optimal seating, sleeping, storage and fluid capacities. The user is responsible for selecting the proper combination of loads to ensure that the recreational vehicle's capacities are not exceeded.

FLEETWOOD RV

America's Favorite Recreational Vehicles

Fleetwood Enterprises, Inc., RV Marketing, P.O. Box 7638, Riverside, CA 92513-7638

Your local Fleetwood RV dealer is:



This award certifies that Fleetwood has met Ford's rigid quality standards for utilizing a Ford chassis.

Interior & Exterior Colors

Your motor home takes you to new adventures every day.

And since this home will be an enduring part of your life, we offer a selection of colors and textures that are a fine blend of classic and contemporary style.

We search to obtain quality fabrics that are elegant, yet durable, to keep up with your active lifestyle.

Year after year, the look will be as welcoming to you as it is to your guests.

Elegant Ivorywood



Cabernet Vinyard



Silver Constellation



FLEETWOOD FAMILY FUN... THE JOURNEY CONTINUES

Where do you want to be? The possibilities are almost limitless. From mini motor homes to luxury coaches, from gas to diesel performance, there's a Fleetwood motor home to fulfill your dreams.

We know exactly how you feel, realizing there's a whole new world to experience. That's why we made sure you can choose from the broadest selection of brands and floor plans the world has to offer. It's no wonder that one out of four motor homes sold is a Fleetwood.*

This is your journey. Take it for a spin.

*According to Statistical Surveys Jan.'99–Dec.'99

FLEETWOOD® RV

© 2000 Fleetwood Enterprises, Inc.
Inventory Control Number PV01B1/1st Edition 7/00

