

Prowler

**Camp like you did when you were a kid.
But without the dirt in your sleeping bag.**



Travel Trailers and Fifth Wheels

Prowler
Luxury-Lite

Half Ton Towable | Smooth Fiberglass Walls | Functional Floor Plans | Full Featured | Aluminum Construction



Pull-Out Galley Storage (most models) allows quick and easy access to kitchen essentials. The clever design makes finding that bowl faster than popcorn can pop.

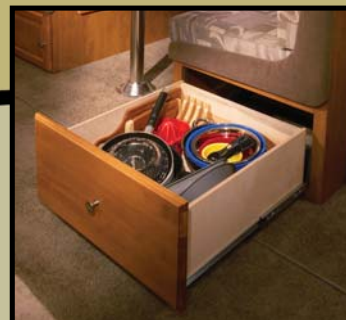


The Galley contains design details that make cooking away from home a joy. A pots and pans drawer with full extension roller bearing drawer guides, a double door refrigerator, a microwave, and a 3-burner range with 16" oven are standard.



The Dinette provides a comfortable place to enjoy Nana's famous chili or family game night.

**Roughing it is overrated.
A clean, comfy, convenient home base
makes the great outdoors seem even greater.**



The Full Extension Drawer under the dinette is the perfect place to store pots and pans.



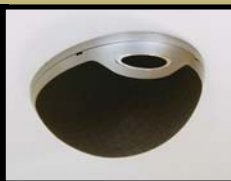
Prowler 260FQS shown in Silver Maple interior Décor with Windsor Birch wood finish.

The Living Room brings camping comfort to a new level, with appealing décor and rich fabrics that are surprisingly durable and easy to clean.



The Entertainment Center with available LCD TV and DVD Player lets you play a movie when it's time to wind down for the night.

Dome Speakers in the living room give your camping trip a soundtrack. They're connected to the standard AM/FM/CD stereo and available DVD and MP3 player.



Prowler is one of the top-selling towable trailer brands of all time, so we know a little something about designing floor plans. A smart one can mean the difference between crowding and comfort. We offer a very wide range of well-designed floor plan configurations to suit up to twelve people.



Under Dinette Storage with aluminum framing keeps the ever-multiplying pile of toys, coloring books, games and treasures safe until playtime.



The Wardrobe designed to hold full-size hangers, keeps your clothes neat and clean.



The Master Bedroom feels just as relaxing as yours at home. After a long day at the river, you can float away on the Queen bed with innerspring mattress.



The Bathroom includes a mirrored medicine cabinet that makes it easy to check your pearly whites. Kids and parents agree the skylight above the shower/tub enclosure makes bath time lots of fun.



As spacious as the great outdoors.
Well, it just feels like it.
You've got stuff? We've got space.
From the inside storage compartments
to the pass-through storage,
Prowler has the room.

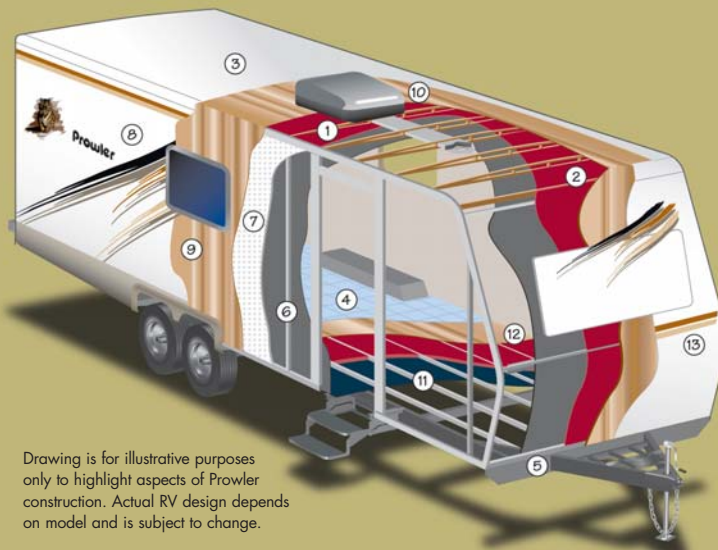


Under-Bed Storage is a convenient place to hide bulkier items that you just can't leave home without.

FIBERGLASS CONSTRUCTION SETS PROWLER APART.

Competitors just can't match the quality of Prowler's construction. Prowler is built strong – with aluminum framed construction and laminated fiberglass exterior sidewalls that provide insulation and rigidity. The quality continues inside, where we use solid hardwood cabinet doors, and seamless vinyl flooring covers the entire floor (not just the parts you can see). This attention to detail creates superior construction, a polished look and an unbeatable value for the money.

1. **ENGINEERED RADIUSUED CEILING TRUSS** – Helps to ensure strength, water runoff and reduced weight.
2. **R7 FIBERGLASS INSULATION** – As in your home, helps to ensure interior comfort in every season.
3. **ONE-PIECE SEAMLESS SYNTHETIC ROOF MEMBRANE** – Provides the ideal weather seal and is warranted for 12 years.
4. **DURABLE VINYL FLOORING** – Easy to clean, this wall to wall flooring holds up to heavy foot traffic.
5. **REINFORCED CAMBERED STEEL CHASSIS** – Provides optimal strength, durability, and towing performance.
6. **1-1/2" ALUMINUM TUBING** – Lightweight, structural studs blend proven framing methods with technologically superior materials.
7. **HIGH-DENSITY BLOCK FOAM INSULATION** – Is custom cut to ensure maximum structure and insulation value.
8. **SMOOTH GLOSS FIBERGLASS EXTERIOR SIDING** - This glossy surface is easy-to-clean and adds beauty and structural integrity.
9. **WOOD SUBSTRATE** – Adds structural reinforcement to the exterior fiberglass panel.
10. **OSB ENGINEERED ROOF SUBSTRATE** – Is designed to maximize strength, is sealed to provide moisture resistance and provides a solid backbone for the rubber roof construction.
11. **2" x 3" FLOOR JOIST** – Allows for the placement of in-floor furnace ducting without compromising structural integrity.

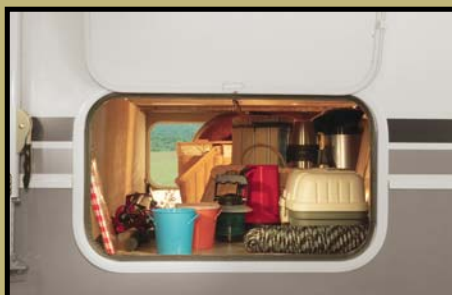


Drawing is for illustrative purposes only to highlight aspects of Prowler construction. Actual RV design depends on model and is subject to change.

12. **ENGINEERED 5/8" OSB FLOORING** – Provides the dependable decking needed to ensure an adequate foundation. Further stability is added by interlocking these sheets using "tongue and groove" construction.
13. **AVAILABLE MOLDED FRONT CAP** – Improved aerodynamics and styling.



The Equa-Flex™ Rubberized Suspension provides a smooth ride and ensures all of your camping gear arrives in style.



Pass-Through Storage is perfect for oversized items like your fishing poles, lawn chairs and cooler.



The Enclosed Chassis (available) allows heating the holding tanks to prevent freezing in cold weather. No need to migrate to warmer climates.



Prowler gives Mother Nature some competition in the beauty department.

With beautiful fabrics and warm woods like these, you could call Prowler “the great indoors.”

Created by professional interior designers, the attractive décors remind you of home.

INTERIOR DÉCOR CHOICES

Windsor Birch



Clear Oak



BLUE MIST

Living Room



Bedroom



SILVER MAPLE

Living Room

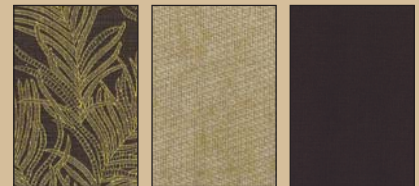


Bedroom



BAMBOO

Living Room

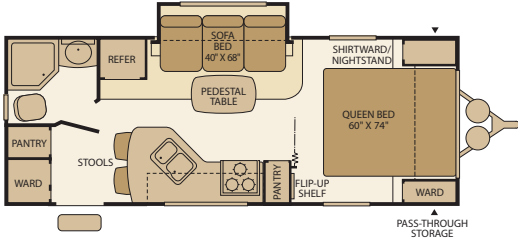


Bedroom

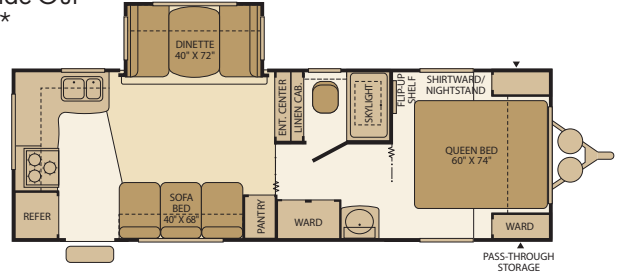


PROWLER TRAVEL TRAILER FLOOR PLANS

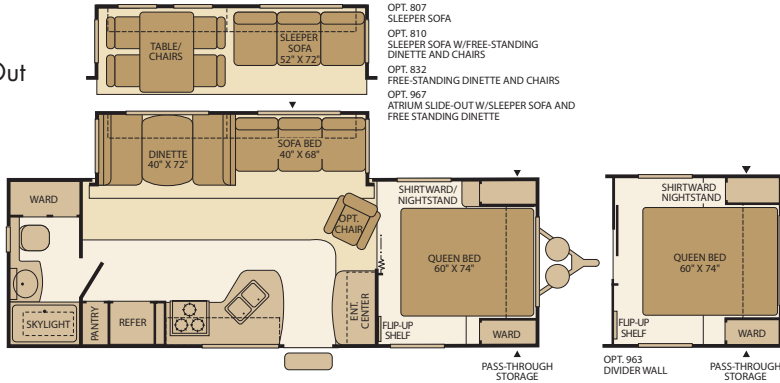
230FQS
Single Slide-Out
Sleeps 4*



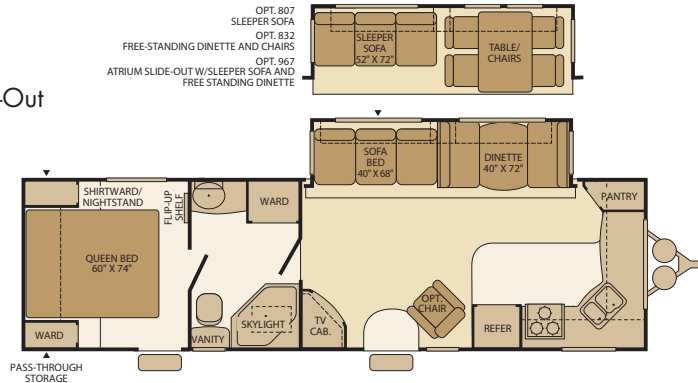
230RKS
Single Slide-Out
Sleeps 6*



260FQS
Single Slide-Out
Sleeps 6*



280FKS
Single Slide-Out
Sleeps 6*

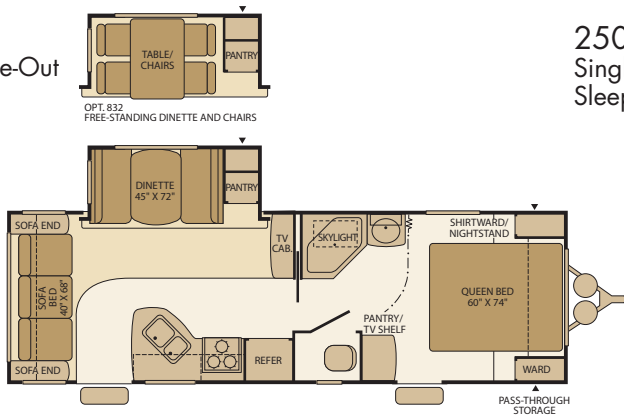


▲ = Exterior Storage

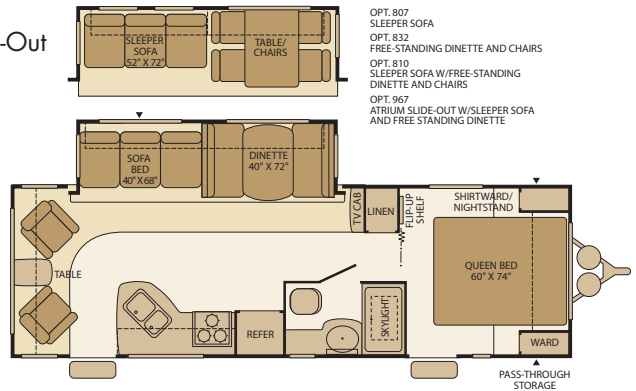
*Sleeping capacity is a variable number and is affected by items such as size of occupant, options and floor plan. Some models are not available in all areas of the country. Please see your local dealer for model availability.

PROWLER TRAVEL TRAILER FLOOR PLANS

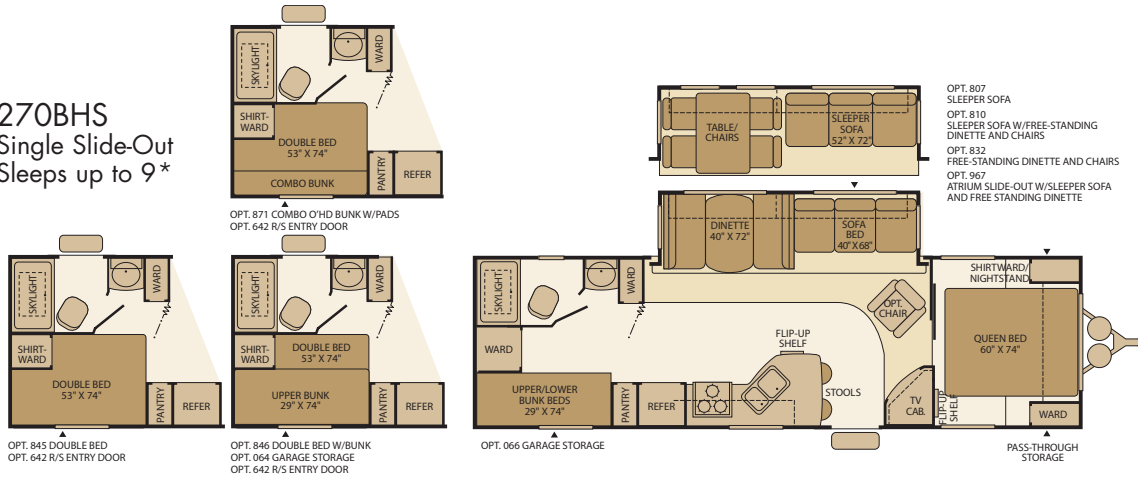
240RLS
Single Slide-Out
Sleeps 6*



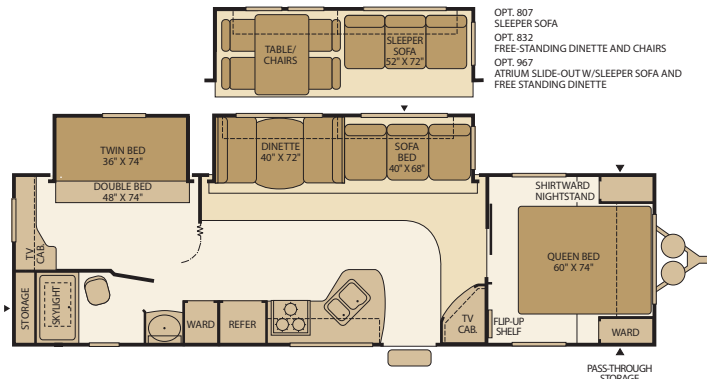
250RLS
Single Slide-Out
Sleeps 6*



270BHS
Single Slide-Out
Sleeps up to 9*



2802BDS
Double Slide-Out
Sleeps 9*

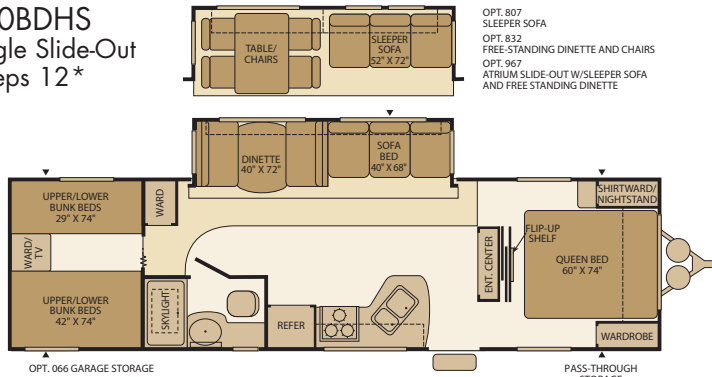


▲ = Exterior Storage

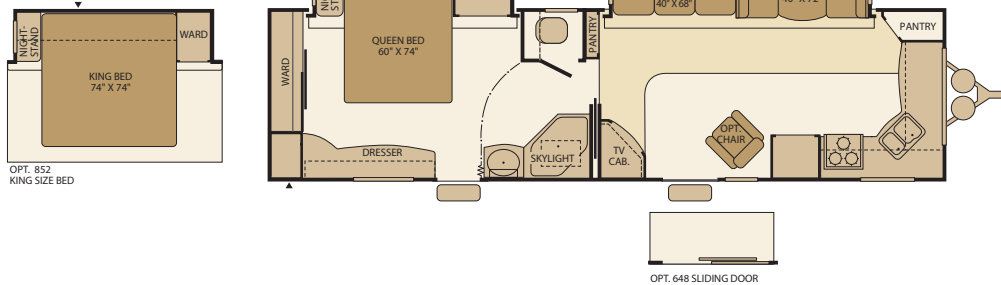
*Sleeping capacity is a variable number and is affected by items such as size of occupant, options and floor plan. Some models are not available in all areas of the country. Please see your local dealer for model availability.

PROWLER TRAVEL TRAILER FLOOR PLANS

310BDHS
Single Slide-Out
Sleeps 12*

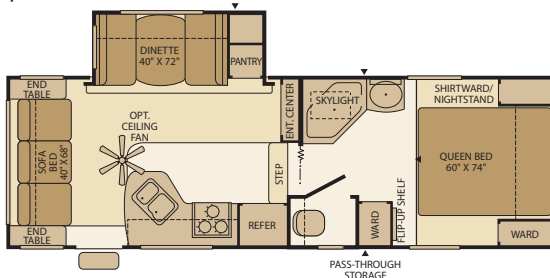


320FKDS
Double Slide-Out
Sleeps 6*

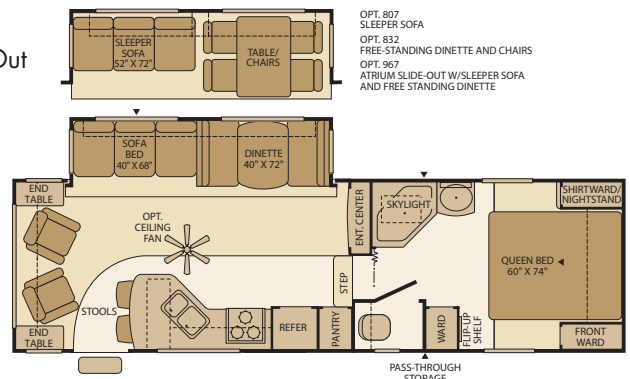


PROWLER FIFTH WHEEL FLOOR PLANS

235RLS
Single Slide-Out
Sleeps 6*



275RLS
Single Slide-Out
Sleeps 6*



▲ = Exterior Storage

*Sleeping capacity is a variable number and is affected by items such as size of occupant, options and floor plan. Some models are not available in all areas of the country. Please see your local dealer for model availability.

PROWLER FEATURES

INTERIOR THROUGHOUT

- AM/FM Stereo/CD Player w/6 Surround Sound Ceiling Mount Speakers & Sub Woofer
- Hydro Flame® Forced Air, Direct Spark Ignition Furnace w/Thermostat
- Ventilated Slide-Out End Wall Windows
- Solid State Converter w/Built-In Battery Charger
- Ceiling Mount 12V Decor Light (Slide-Out Models)
- Water Heater Bypass
- 6-Gallon Propane/110V DSI (Direct Spark Ignition) Water Heater
- Whole Coach Water Filtration
- Aluminum Framing in Dinette and Bed Frame
- Wood Magazine Rack
- Reversible Dinette Seat Cushions
- Swivel Reading Lights Over Sofa

GALLEY

- Deluxe Pull-out Galley Storage System (Most Models)
- 60/40 Sink
- Deluxe Full Extension Roller Bearing Drawer Guides
- Double Door Propane/Electric Refrigerator
- Dual Sink Covers/Cutting Board
- 3-Burner Range w/16" Oven
- Metal Hi-Rise Faucet
- Microwave w/Electronic Touch Pad
- Mortise & Tenon Raised Panel Cabinet Doors
- Pantry w/Fixed Shelves
- Pots & Pans Drawer
- Range Hood w/12V Light & Exhaust Fan
- Upgraded Vinyl Flooring
- Range Cover

BEDROOM

- Custom Headboard
- Innerspring Mattress
- Miniblinds Throughout (Except Bunk Windows)
- Wardrobes Accommodate Residential Size Clothes Hangers
- Strut Assisted Lift-Up Bed Platform w/Below Bed Storage (Most Models)
- Swivel Reading Lights

BATHROOM

- 12V Power Comfort Air Bath Vent
- ABS Tub/Shower Enclosure
- Bathroom Skylight (Except 230FQS)
- Glass Shower Door Enclosure (Select Models)

- Medicine Cabinet w/Mirrored Door
- Porcelain Toilet
- Wall-Switched Ceiling Light
- Raised 6 Panel Bath Door
- Bathroom Window w/Valance & Blinds

SAFETY/CONVENIENCE

- 120V GFI Circuit Protection (Galley/Bath/Patio)
- 4-Wheel Electric Brakes
- Break-Away Emergency Disconnect Brake
- Carbon Monoxide Detector/Alarm
- Large Lend-a-Hand Entry Assist Handle
- Fire Extinguisher
- Propane Detector/Alarm
- Smoke Detector/Alarm
- Wall Mounted Systems Monitor Panel

EXTERIOR THROUGHOUT

- 120V Patio Receptacle
- 26" Radius Entry Door
- Dual 30 lb. Propane Cylinders w/Regulator & Auto-Changeover
- Extended Pin Box & Power Landing Gear (Fifth Wheels)
- Fiberglass Exterior Sidewalls
- Front & Rear Colored Skirt End Caps
- Hitch Light
- Laminated Sidewalls
- Molded Wheel Well Skirts (Color Coordinated to Match Radius Skirt)
- Radius Truss Roof Rafters
- Rear Bumper w/Sewer Hose Carrier
- Split Tank Propane System (Fifth Wheels)
- Welded Battery Rack (Travel Trailers)
- Exterior Shower
- Patio Awning
- Security Light
- Spare Tire w/Cover
- Stabilizer Jacks
- Tinted Safety Glass Windows
- TV Antenna
- Equa-Flex Rubberized Suspension

BODY STRUCTURE

- Cambered Chassis
- I-Beam Main Rails
- One-Piece Seamless Rubber Roof
- Finished Luggage Door Openings
- Lined Luggage Compartments w/Lights
- Locking Radius Luggage Doors

OPTIONS

INTERIOR THROUGHOUT

- AM/FM Stereo/CD with DVD & MP3 Player, 6 Surround Sound Ceiling Mount Speakers & Sub Woofer
- Ceiling Fan (Fifth Wheels)
- Day/Night Shades
- Raised Panel Refrigerator Insert (6 Panel)
- 13,500 BTU Air Conditioner
- Free Standing Chair (Most Models)
- Stainless Steel Appliances
- LCD TV 19" Bedroom
- LCD TV 19" w/DVD
- Flip-Up Counter Extension
- Atrium Slide w/Sleeper Sofa & Free-Standing Dinette
- Large 8 Cu. Ft. Double Door Refrigerator
- Lounge Recliner
- Glass Tub Enclosure (Except 230FQS & 260FQS)

BEDROOM

- Bedroom Carpet (Most Models)
- Upgraded Mattress

EXTERIOR THROUGHOUT

- Fifth Wheel Power Landing Gear
- Black Tank Flush System
- Extreme Edition Package (Double Thickness Insulation in Floor & Ceiling w/Astro-Foil™ in Slide Floor & Around Holding Tanks)
- Fully Enclosed Chassis w/Heated Tanks
- Roof Ladder
- Front ABS Cap (Travel Trailers)
- Slide-out Awning Toppers
- Dual Pane Windows
- Aluminum Wheels
- Exterior Speakers

STORAGE

- Exterior Garage Storage (Select Models)

PROWLER WEIGHTS AND MEASUREMENTS

TRAVEL TRAILERS											FIFTH WHEELS	
Weights	230FQS	230RKS	240RLS	250RLS	260FQS	270BHS	280FKS	2802BDS	310DBHS	320FKDS	235RLS	275RLS
GVWR (lbs) ¹	6,300	7,500	7,540	7,700	7,300	8,000	7,800	8,280	8,008	10,000	8,000	8,081
Gross Dry Weight (lbs) ^{2, 6}	4,833	5,504*	5,524*	6,350*	5,601	6,550*	6,456	6,945	6,601	8,545*	6,593	6,938
Cargo Carrying Cap (lbs) ^{3, 6}	1,467	1,996*	2,016*	1,350*	1,699	1,450*	1,344	1,335	1,407*	1,455*	1,407*	1,143
Hitch Dry Weight (lbs) ^{2, 6, 9}	507	671*	681*	925*	624	850*	984	824	866*	955*	1,410*	1,422
Dimensions & Capacities												
Length (Feet & Inches) ^{4, 6, 8}	25' 6"	28' 9"	29' 8"	29' 8"	28' 5"	32' 9"	32' 8"	33' 6"	34' 4"	35' 1"	27' 2"	30' 6"
Height (Feet & Inches) ^{5, 6}	10' 3"	10' 3"	10' 3"	10' 3"	10' 3"	10' 3"	10' 3"	10' 4"	10' 4"	10' 4"	11' 11"	11' 11"
Fresh Water Holding Tank (gal) ^{6, 7}	40	40	40	40	40	40	40	40	40	50	40	40
Grey Water Holding Tank (gal) ^{6, 7}	40	30/30	40	40	40	40	30/30	40	40	40/21	40	40
Black Water Holding Tank (gal) ^{6, 7}	30	30	30	30	30	30	30	30	30	40	30	30
Propane Capacity (lbs) ^{6, 7}	60	60	60	60	60	60	60	60	60	60	60	60
Tire Size (Load Range)	15"	15"	15"	15"	15"	15"	15"	15"	15"	15"	15"	15"

1. GVWR (Gross Vehicle Weight Rating) is the maximum permissible weight of this trailer when fully loaded. It includes all weight at the trailer axle(s) and tongue or pin.
2. All dry weights are based on the standard model and do not include optional features or equipment.
3. Cargo Carrying Capacity is determined by subtracting Gross Dry Weight from GVWR. Cargo includes all fluids, optional features, equipment, and personal cargo.
4. Length measured from hitch or pin box to rear bumper (excludes accessories). Trailer length includes hitch; fifth wheel includes standard pin box.
5. Actual height may be lower, based on option offerings. Consult with your dealer to obtain actual height for the unit you are interested in.
6. Approximate.
7. Water weight equals 8.3 lbs per gallon. Propane weight equals 4.2 lbs per gallon.
8. Add 10" if equipped with optional spare tire and carrier.

9. Hitch weights are dependent upon how the trailer is equipped with options, on-board cargo and tank fluid levels. Actual hitch weights may be higher or lower than shown. It is recommended that the tow vehicle and hitch for your trailer have sufficient capacity to accommodate the GVWR of the selected trailer.

N/A = Not available at the time of printing.

* = Estimated weights

IMPORTANT— PLEASE READ: Product information, photography and illustrations included in this publication were as accurate as possible at the time of printing. For further product information and changes, please visit our website at www.fleetwoodrv.com or contact your local Fleetwood dealer. Prices, materials, design and specifications are subject to change without notice. All weights, fuel, liquid capacities and dimensions are approximate. Fleetwood has designed its recreational vehicles to provide a variety of uses for customers. Each vehicle features optimal seating, sleeping, storage and fluid capacities. The user is responsible for selecting the proper combination of loads (i.e., equipment, fluids, cargo, etc.) to ensure that the vehicle's capacities are not exceeded.

WHY PROWLER?



PASSION

We're truly passionate about the RV lifestyle. Fleetwood was founded by RV enthusiasts, and that tradition continues today.



QUALITY

There's no cutting corners. Skilled craftsmen build every Fleetwood RV for maximum durability and longevity.



SERVICE

Help is nearby. When you need an upgrade or repair, you'll find facilities all across North America and more than 1,100 dealers ready to assist you.



WARRANTY

Exclusive RV Ownercare warranty. See your Fleetwood dealer for details.



TRUST

More people trust Fleetwood. After all, we've spent over 50 years perfecting RVs, earning the loyalty of generations of RVers.

CONTACT US

To locate a dealer near you, visit our website at www.fleetwoodrv.com or call 1-800-444-4905. We can also be contacted at Fleetwood Customer Relations, P.O. Box 1007, Decatur, IN 46733.

FLEETWOOD TRAVELCADE CLUB

As a Fleetwood owner, you're eligible to become a member of the Fleetwood Travelcade Club. It's a perfect way to meet other Fleetwood owners who love to travel across America and share in the RV lifestyle. Call (877) 577-2560 or visit our website at www.fleetwoodrv.com/owners_club to learn more and join the fun!

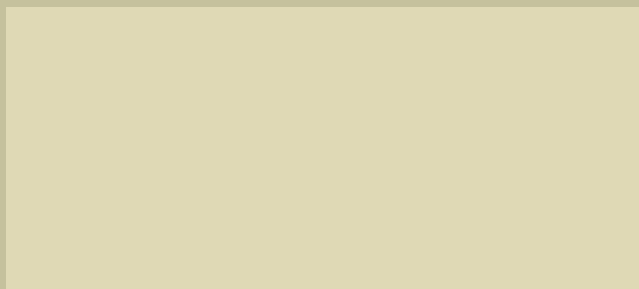
RV OWNERCARE

See your local dealer for complete details.

IMPORTANT—PLEASE READ

Product information, photography and illustrations included in this publication were as accurate as possible at the time of printing. For further product information and changes, please visit our website at www.fleetwoodrv.com or contact your local Fleetwood dealer. Prices, materials, design and specifications are subject to change without notice. All weights, fuel, liquid capacities and dimensions are approximate. Fleetwood has designed its recreational vehicles to provide a variety of uses for customers. Each vehicle features optimal seating, sleeping, storage and fluid capacities. The user is responsible for selecting the proper combination of loads (i.e.: equipment, fluids, cargo, etc.) to ensure that the vehicle's capacities are not exceeded.

Your Local Fleetwood Dealer Is:



TO OUR CUSTOMERS...

To make sure that you get the maximum satisfaction out of your recreational vehicle purchase, there are several things you should know:

1. Learn all you can about the travel trailer or fifth wheel you're planning to buy. Don't rely on word of mouth. Get the facts about the actual trailer length, width, unloaded weight with options, Gross Vehicle Weight Rating, and cargo carrying capacity. These are usually available in the manufacturer's sales literature or from the Cargo Carrying Capacity Label located in each trailer. Be sure to check this information **before** you decide which unit to buy.

2. Verify the towing capacity of your tow vehicle. If you don't know, or aren't sure, you can ask at your automotive dealership. Be sure to match its tow rating to the loaded (not dry) weight of your trailer. Include the weight of water, additional accessories, clothing, food, and gear. To help Fleetwood travel trailer customers estimate this total weight, our Gross Vehicle Weight Ratings reflect the maximum weight of the trailer when fully loaded for camping. Be sure the weight of the tow vehicle plus the weight of your trailer do not exceed the Gross Combined Weight Rating of the tow vehicle.

Taking these simple steps before you buy will help ensure that your trailer and tow vehicle combination is just what you wanted.

See you on the trail!

treadlightly!
with a good perspective

