

Four Winds

Travel Trailers & Fifth Wheels

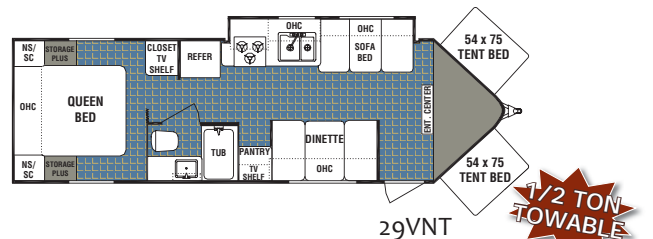
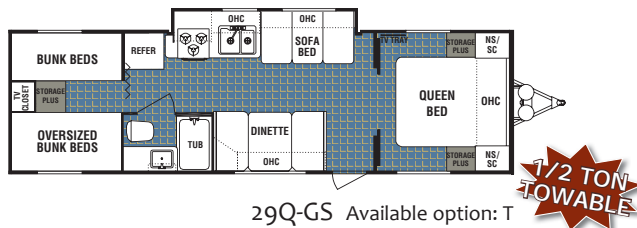
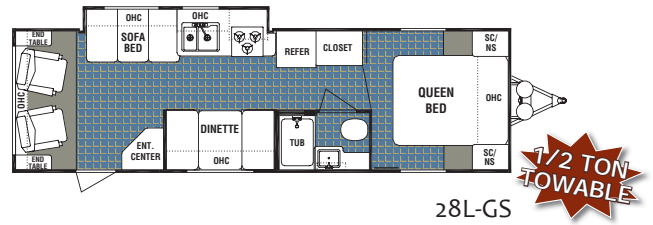
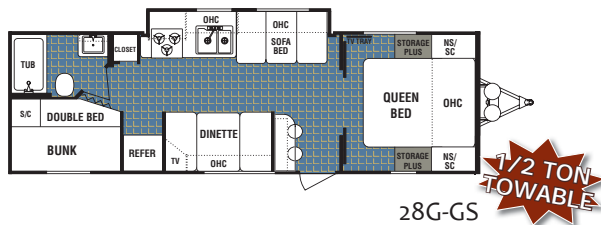
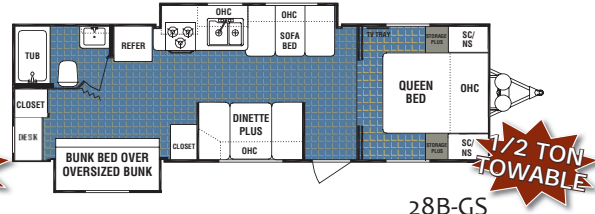
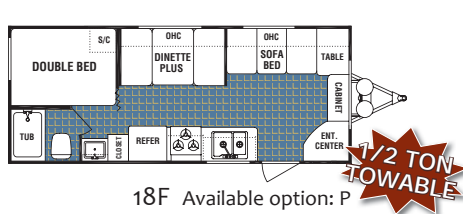
Featuring
**LITE HALF-TON
TOWABLE MODELS**



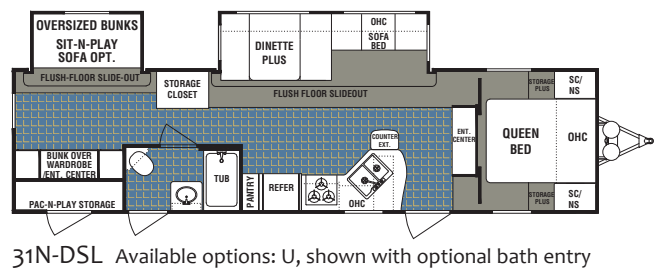
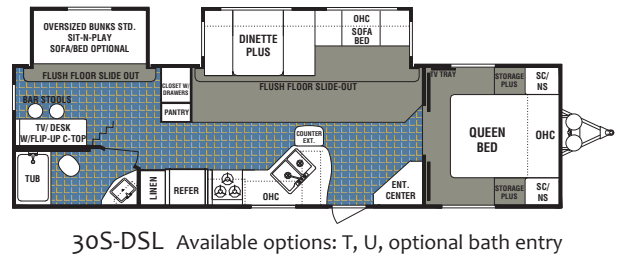
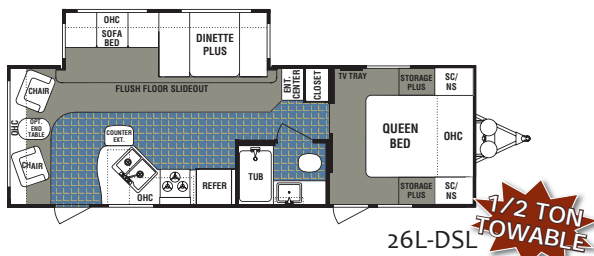
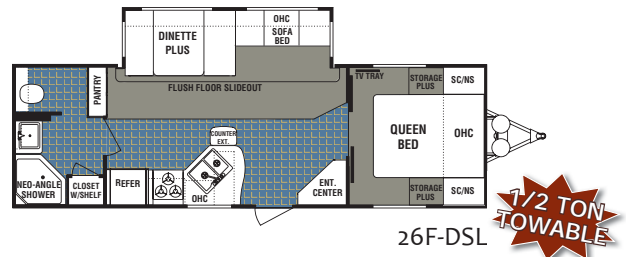
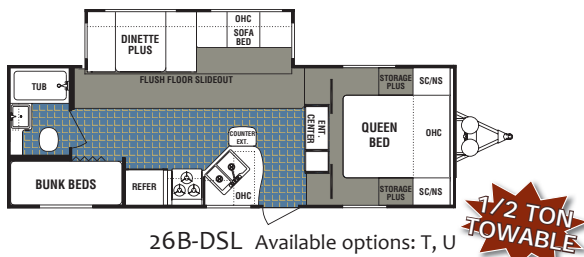
THOR
INDUSTRIES, INC.

FOUR WINDS FLOORPLANS

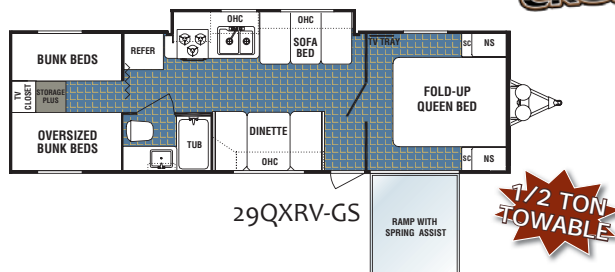
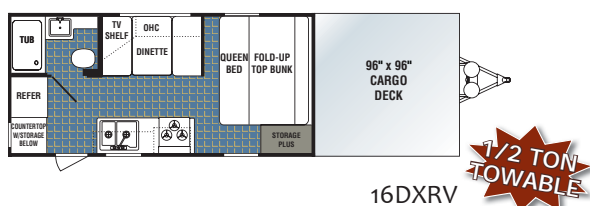
EXPRESS LITE TRAVEL TRAILERS



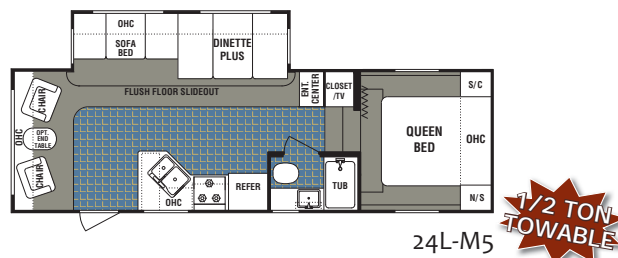
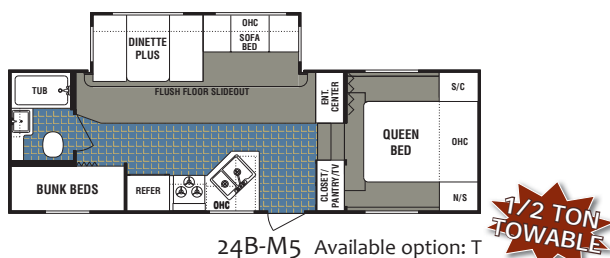
EXPRESS LITE "DSL" TRAVEL TRAILERS



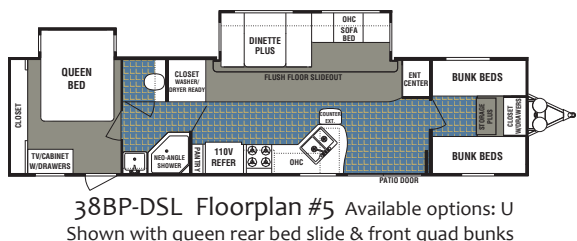
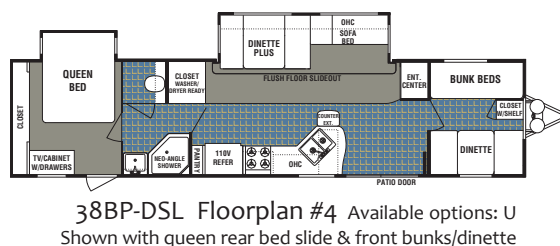
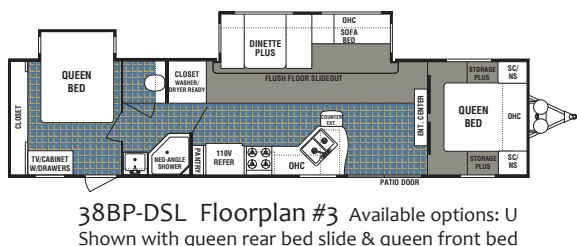
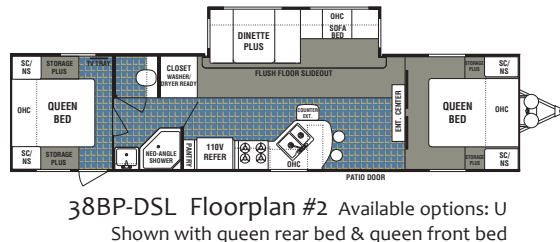
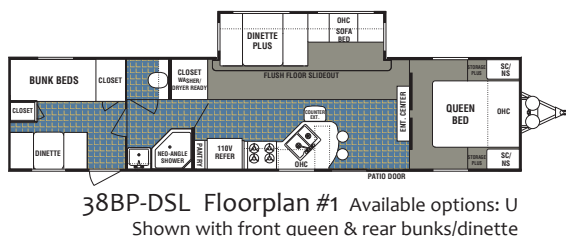
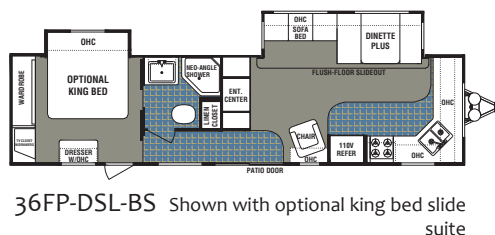
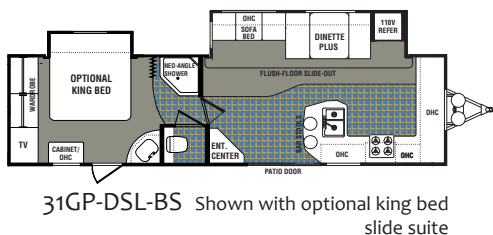
EXPRESS LITE TRAVEL TRAILERS



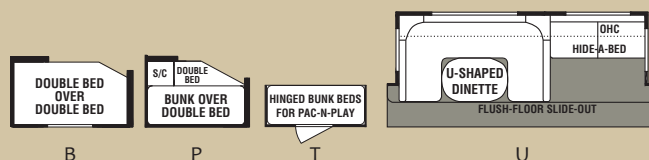
EXPRESS LITE FIFTH WHEELS



SEASONAL LAKE & CAMPGROUND UNITS



FLOORPLAN OPTIONS



FIBERGLASS SIDEWALL PACKAGE



Fiberglass Sidewall Package Option



Standard Aluminum Sidewalls

A Fiberglass Sidewall Package option is available on all Four Winds models. The Fiberglass Sidewall Package option enhances the appearance of the trailer and protects it from hazards of the road. The option replaces the standard corrugated aluminum exterior siding.

Fiberglass sidewalls, normally available only in higher priced trailers, are available from Four Winds. Another great feature at value prices!

WEIGHTS & SPECIFICATIONS

	Floorplan	Base Weight	Hitch Dry Weight	Cargo Capacity	Exterior Length	Exterior Height w/AC	Fresh Water Capacity (Gal.)	Grey Water Capacity (Gal.)	Black Water Capacity (Gal.)	Furnace Size (BTU's)
Express Lite Travel Trailers	18F *	4076	466	3624	23' 5"	10' 4"	30	42	42	25,000
	25C-GS *	4765	466	2935	26' 1"	10' 4"	30	42	42	25,000
	28B-GS *	5775	722	1925	31' 3"	10' 4"	30	42	42	30,000
	28G-GS *	5368	619	2332	29' 11"	10' 4"	30	42	42	30,000
	28L-GS *	5368	619	2332	31' 1"	10' 4"	30	42	42	30,000
	29Q-GS *	5661	606	2120	31' 8"	10' 4"	30	42	42	30,000
	29VNT *	6211	812	1489	33'	12' 4"	30	42	42	30,000
Express Lite "DSL" Travel Trailers	26B-DSL *	5656	692	2353	28' 5"	11' 4"	46	42	42	30,000
	26F-DSL *	5900	775	3700	29' 9"	11' 4"	46	42	42	30,000
	26L-DSL *	6031	561	3649	29' 9"	10' 8"	46	42	42	30,000
	30S-DSL	7542	716	3634	33' 8"	11' 4"	46	42	42	34,000
	31B-DSL *				33' 4"	11' 4"	46	42	42	34,000
	31N-DSL				35' 8"	11' 4"	46	42	42	34,000
Express Lite XRV	16DXRV *	4596	475	3174	33' 2"	11' 4"	30	42	42	25,000
	29QXRV *				31' 8"	10' 4"	30	42	42	30,000
Express Lite Fifth Wheels	24B-M5 *				27' 10"	12' 2"	46	42	42	30,000
	24L-M5 *				26'	12' 2"	46	42	42	30,000
Seasonal Units	31GP-DSL-BS	7706	1067	1984	34' 11"	11'	46	42/42	42	34,000
	36FP-DSL	8239	1221	2937	37' 7"	11'	46	42/42	42	34,000
	38P-DSL #1				39' 2"	11'	46	42/42	42	34,000

* Half-Ton Towable

*Consult your vehicle owner's manual for maximum towing capacity before purchasing a recreation vehicle.

Vehicle loading - Every effort has been made to provide the greatest number of options for the recreational vehicle owner. Along with these choices comes the responsibility to manage the loads that are imposed by the choices that they remain within the manufacturer's specified chassis weight limits. Do not overload the recreational vehicle. Dry weight is the weight of the unit with standard run features. Some optional equipment not included. Net carrying capacity (NCC) is determined by subtracting unloaded vehicle weight (UVW) from gross vehicle weight (GVWR) and includes fluids, options and cargo. Liquid capacities and weights are approximations only.

Warning - This information is intended as a guide only. Weights of individual vehicles may vary. Consult your owner's manual for complete loading, weighing and towing instructions.

Vehicles are designed for recreational use only and not intended for use as a primary residence.

Product information, specifications, and photography in this brochure were as accurate as possible at time of printing. Photographs may contain some features that are optional on your vehicle. Since we continually strive to improve our products, actual products may differ. Prices and specifications are subject to change without notice. All capacities are approximate and dimensions are nominal. Some features shown are optional and may be different or unavailable in Canada. All logos and brand names shown in this brochure are registered trademarks of Dutchmen Mfg. Inc.

VISIT US ON THE WEB FOR:

- New Floorplans
- Product Photos
- Detailed Specifications
- Decor Colors

www.4-WINDS-RV.com

www.4Winds-RV.com

Dutchmen Manufacturing, Inc.

A division of Thor Industries

2164 Caragana Court 4 Goshen, IN 46526

Sales: 574.534.1224 4 Fax: 574.975.0592

Your Local Dealer