

The good life...to go!



TERRY LX

- ALUMINUM FRAMED CONSTRUCTION
- LAMINATED FIBERGLASS SIDEWALL CONSTRUCTION
- FUNCTIONAL FLOOR PLANS
- APPEALING DECORS

 **FLEETWOOD**
Driven to Explore



Terry LX 335RLDS shown in Tropical Bungalow interior with Symphony Cherry wood cabinetry.

IT'S NOT CALLED LX FOR NOTHING.

For the 2009 Terry LX, we didn't hold anything back! It's got it all—name brands, designer décor and more. But its best feature may be the one you don't see: value.



THE GALLEY

is loaded with smart details. Full-extension drawers let you access your cooking supplies easily. Solid surface countertops provide beauty and durability, while optional stainless steel appliances add a touch of elegance.





Bedsread not included.



THE SOFA BED

is topped with a super-comfortable air mattress (optional) and features ample under-bed storage space below.

THE LIVING ROOM

is the perfect place to kick back and relax, thanks to the top-notch entertainment center with 32" LCD HDTV (most models) and home theater system with surround sound.



THE OVERHEAD STORAGE

keeps your dishes (and even that secret cookie jar of yours) out of sight and within easy reach.



THE FREE-STANDING DINETTE

(optional) looks like your dining table at home. With the table extension, you can seat up to five and enjoy the scenery from the picture window.

ENJOY HOME FIELD ADVANTAGE WHEREVER YOU GO.

Just because you like to spend time among the wildlife, doesn't mean you don't enjoy a little civilization now and then. That's why we decked out the Terry LX with all the comforts of home—especially in those places where you need it most.

THE BATHROOM

is about as far from those scary campground facilities as you can get! In here, you're surrounded by special features—like a glass shower enclosure, a mirrored, wood-framed medicine cabinet, vanity lighting, and (are you sitting down?) a real porcelain toilet.



THE DRESSER

offers extra storage room for those oh-so-important changes of clothes. After all, nobody wants to spend their precious vacation time searching for a pair of clean socks!

THE RESIDENTIAL-SIZE WALK-IN WARDROBE

let's you find your fishing vest or that cute new pair of pumps in a jiffy.



THE BEDROOM

is second only to the bathroom as the key to happy camping. After watching your favorite movie on the LCD HDTV (optional), or just gazing into the romantic electric fireplace (optional on most models), drift off on your comfy king bed with innerspring mattress.



TERRY LX INTERIOR DÉCOR CHOICES

TROPICAL BUNGALOW

Living Room



Bedroom



IVY GREEN

Living Room



Bedroom



TERRACOTTA CLAY

Living Room



Bedroom



WOODS

Plantation Cherry



Symphony Cherry



OUR CLAIM TO FAME: THE ALUMINUM FRAME.

To create a lightweight but strong skeleton, we used a welded aluminum frame on all four walls and the floor. Coupled with our lamination process, it provides superior sidewalls that are strong, corrosion resistant and lightweight.

I. HIGH GLOSS FIBERGLASS SIDING -

This durable and glossy surface is easy to clean, and adds beauty and structural integrity.

2. FIBERGLASS FRONT CAP - Provides aerodynamics and styling.

3. 1-1/2" ALUMINUM TUBING - Lightweight, structural studs blend proven framing methods with technologically superior materials.

4. SOLID BLOCK EPS (Expanded Polystyrene) INSULATION - Provides strength and durability while helping to ensure interior comfort in every season.

5. WOOD SUBSTRATE - Adds structural reinforcement to the exterior fiberglass siding.

6. INTERIOR WALL PANEL - Features a durable, easy to clean, decorative finish.

7. 2" x 3" ALUMINUM FLOOR JOISTS - Provides a lightweight floor construction without compromising strength.

8. ENGINEERED 5/8" FLOOR DECK - Provides the dependable decking needed to ensure an adequate foundation. Further stability is added by interlocking these sheets using tongue in groove construction.

9. DURABLE VINYL FLOORING - From the best name in residential flooring.

10. FULLY ENCLOSED CHASSIS - Provides a barrier from ground debris and allows for the holding tanks to be heated.

II. FIBERGLASS INSULATION - As in your home, helps to ensure interior comfort in every season.

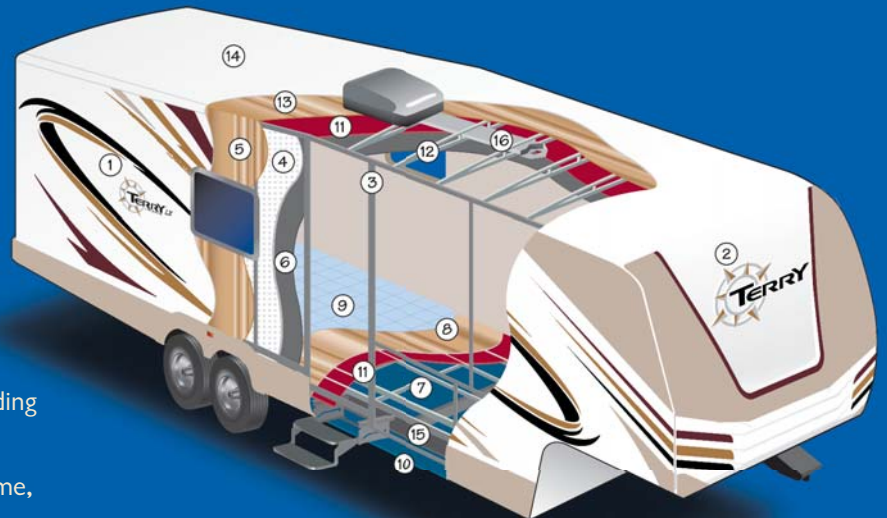
12. ENGINEERED RADIUSED STEEL CEILING TRUSS - Helps to ensure strength, water runoff and reduced weight.

13. ENGINEERED ROOF DECK - Is designed to maximize strength, is sealed to ensure moisture resistance and provides a solid backbone for the rubber roof construction.

14. ARCTIC WHITE SEAMLESS SYNTHETIC ROOF MEMBRANE - Provides the ideal weather seal and is warranted for 12 years.

15. REINFORCED CAMBERED STEEL CHASSIS - Provides optimal strength, durability, and towing performance.

16. DUCTED IN-CEILING AIR CONDITIONING - Efficiently distributes cool air.



Drawing is for illustrative purposes only to highlight aspects of Terry LX construction. Actual RV design depends on model and is subject to change.

EXTREME EDITION PACKAGE



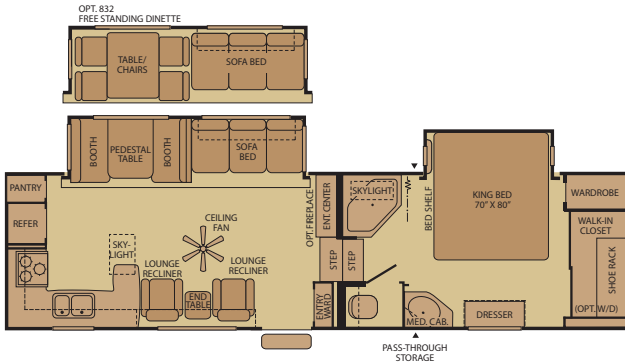
Our optional Extreme Edition Package features double-thick insulation in the floor and ceiling, plus Astro-Foil™ in the living room slide-out floor and around the holding tanks. Combine those features with our standard fully enclosed chassis (which allows for heated holding tanks), and our insulated water lines along the furnace duct, and Terry LX is ready for extended season camping!



TERRY LX FIFTH WHEEL FLOOR PLANS

305RKDS

Double Slide-Out • Sleeps 6



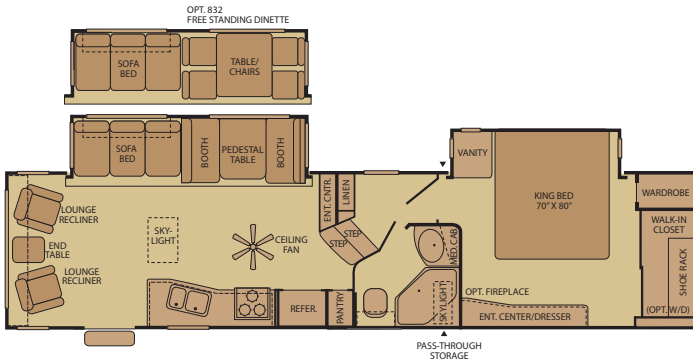
305RLTS

Triple Slide-Out • Sleeps 6



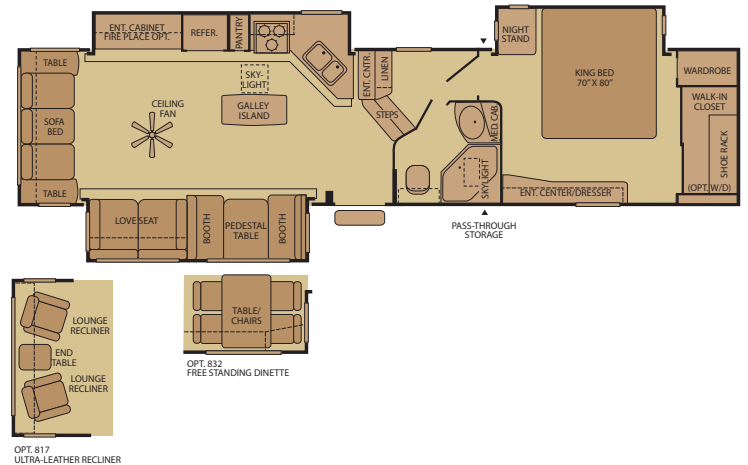
335RLDS

Double Slide-Out • Sleeps 6



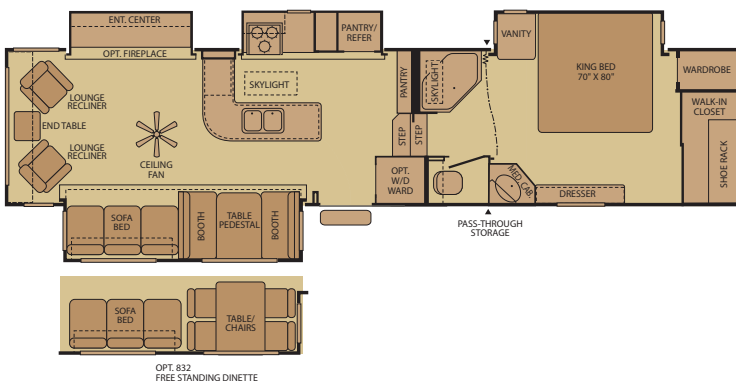
345GSTS

Triple Slide-Out • Sleeps 6



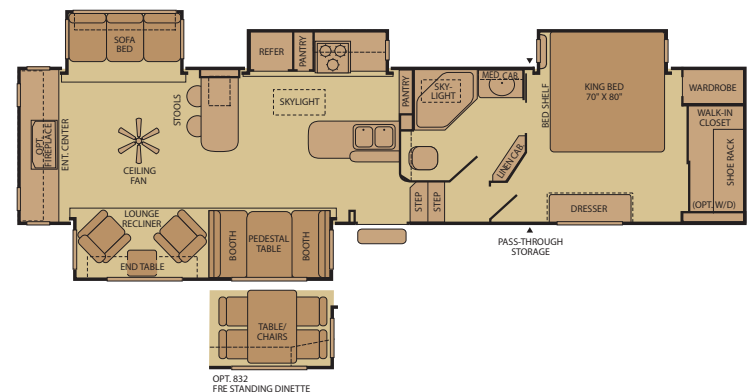
345RLQS

Quad Slide-Out • Sleeps 6



355SAQS

Quad Slide-Out • Sleeps 6



* Sleeping capacity is a variable number and is affected by items such as size of occupant, options and floor plan.
Some models are not available in all areas of the country. Please see your local dealer for model availability.

▲ = Exterior Storage

EXPLORE WIDE-OPEN COUNTRY! (AND THAT'S JUST ON THE INSIDE.)

Out there is a world filled with spectacular beauty, breathtaking sights and room to roam. Inside? Same thing. The Terry LX offers a variety of floor plans that are as flexible as they are functional. Speaking of functionality, you may notice that the useful features aren't confined to the interior. Just take a look.



PASS-THROUGH STORAGE is the place to keep large items, like your golf clubs or your wake board.



THE CONVENIENCE CENTER, lighted for ease of use, contains everything you need behind a locking door including an exterior shower and the water heater bypass.



TERRY LX FEATURES

STANDARD FEATURES

INTERIOR THROUGHOUT

- 13,500 Btu Air Conditioner
- 10-Gallon LP/110V/DSI (Direct Spark Ignition) Water Heater
- AM/FM DVD/CD Home Theater System w/Surround Sound
- 32" HD LCD Television (Select Models)
- Cable TV Hook-Up
- Free Standing Lounge Recliners
- Hydro Flame® Forced Air, Direct Spark Ignition Furnace w/Thermostat
- Mission Grooved Solid Wood Insert Cabinet Doors
- Hidden Hinged Cabinet Doors
- Solid Surface Galley and Lavvy Tops
- Halogen Ceiling and Overhead Cabinet Lighting
- Oversized Light Switches
- Satellite Jack
- Slide-Out End Wall Ventilated Windows
- Solid State Converter w/Built-In Battery Charger
- Wall Mount 12V Decor Light
- Water Heater Bypass
- Day/Night Shades

GALLEY

- Water Purifier
- 12V Dinette Decor Light
- 4 Galley Drawers (Most Models)
- 60/40 Sink
- Solid Surface Top w/Sink Covers
- Stainless Steel Sink
- Deluxe Full Extension Roller Bearing Drawer Guides
- Double Door Propane/Electric Refrigerator
- Solid Surface Flip-Up Galley Extension (Most Models)
- 3-Burner Range w/22" Oven
- Single Lever w/Pull-Out Sprayer Faucet
- Pantry w/Fixed or Removable Shelves
- Pots and Pans Drawer
- Range Cover
- Residential Height Countertops
- Toe Kick
- Upgraded Vinyl Flooring
- Half-time Convection Oven

BEDROOM

- Walk-In Closet w/Pole, Shelf and Shoe Rack
- King Bed w/Innerspring Mattress and Lift-Up Bed Platform w/Below Bed Storage
- Bedroom Carpet
- Night Shades
- Pillow Shams
- Residential Size Wardrobe

BATHROOM

- Solid Surface Lavvy Top
- 12V Power Exhaust Roof Vent
- Glass Shower Enclosure
- ABS Colored Tub/Shower Enclosure
- Wood Frame Medicine Cabinet w/Mirrored Door
- Porcelain Toilet
- 2 Panel Wood Door
- Wall-Switched Ceiling Light
- 3 Bulb Vanity Light
- Weathered Copper Fixtures

SAFETY/CONVENIENCE

- 120V GFI Circuit Protection (Galley/Bath/Patio)
- 4-Wheel Electric Brakes
- Axle Equalizer
- Break-Away Emergency Disconnect Brake
- Carbon Monoxide Detector/Alarm
- Exit Assist Handle
- Fire Extinguisher
- Lend-a-Hand Entry Assist Handle
- Propane Detector/Alarm
- Security Light
- Smoke Detector/Alarm
- Dark Tinted Safety Glass Windows
- Wall Mounted Systems Monitor Panel
- Water System Winterization Port

EXTERIOR THROUGHOUT

- Front Fiberglass Two Tone Cap
- Radius Transition to Sidewalls at Roof Line
- Exterior Convenience Center
- Rear Ladder
- Aluminum Wheels
- Spare Tire w/Cover
- One Step Electric Awning
- 120V Patio Receptacle
- 30" Radius Entry Door
- Fifth Wheel Power Landing Gear
- Dual 30 lb. Propane Cylinders w/Regulator and Auto-Changeover
- Fully Enclosed Chassis
- Extended Pin Box and Power Landing Gear
- High Gloss Fiberglass (Gel Coat) Sidewalls
- Front and Rear Colored Skirt End Caps
- Front Diamond Plate Gravel Guard
- Heated and Enclosed Holding and Water Tanks
- Hitch Light
- Laminated Sidewalls
- Molded Wheel Well Skirts (Color Coordinated to Match Radius Skirt)
- Quick Drain Holding Tank (Fresh Water)
- Radiused Steel Ceiling Truss
- Rear Bumper w/Sewer Hose Carrier
- Satellite Ready
- Split Tank Propane System
- Stabilizer Jacks
- TV Antenna
- Joy Ride Rubberized Suspension

BODY STRUCTURE

- Cambered Chassis
- I-Beam Main Rails
- One-Piece Seamless Rubber Roof

STORAGE

- Finished Luggage Door Openings
- Locking, Lined Luggage Compartments w/Lights
- Radius Luggage Doors

OPTIONS

INTERIOR THROUGHOUT

- 15,000 Btu Air Conditioner
- Secondary A/C 13.5M
- Living Room Carpet (Most Models)
- Deluxe Refrigerator Insert
- Stainless Steel Appliances
- Electric Fireplace (Most Models)
- Sofa Bed w/Air Mattress
- Washer/Dryer Ready
- Free Standing Dinette and Chairs
- Galley Skylight
- Luxurious Simulated Leather Recliners

BEDROOM

- HD LCD Bedroom TV
- Electric Fireplace (Select Models)

EXTERIOR THROUGHOUT

- Rear Fiberglass Cap
- Dual Pane Windows
- Extreme Edition Package (Double Thickness Insulation in Floor and Ceiling w/Astro-Foil™ in Living Room Slide Floor and Around Holding Tanks)
- Slide-Out Toppers
- Rear Power Stabilizing Jacks

WEIGHTS AND MEASUREMENTS

WEIGHTS

FIFTH WHEELS	305RKDS	305RLTS	335RLDS	345GSTS	345RLQS	355SAQS
GVWR (lbs) ¹	14,000	14,000	14,000	N/A	N/A	14,500
Gross Dry Weight (lbs) ^{2,6}	9,164	10,500	9,801	N/A	N/A	11,767
Cargo Carrying Capacity (lbs) ^{3,6}	4,836	3,950	4,199	N/A	N/A	2,733
Hitch Dry Weight (lbs) ^{2,6,8}	2,254	2,110	2,278	N/A	N/A	2,546

DIMENSIONS & CAPACITIES

FIFTH WHEELS	305RKDS	305RLTS	335RLDS	345GSTS	345RLQS	355SAQS
Length (Feet & Inches) ^{4,6}	33' 2"	35' 5"	36' 9"	37' 11"	39' 4"	38' 6"
Height (Feet & Inches) ^{5,6}	12' 5"	12' 5"	12' 5"	12' 5"	12' 5"	12' 5"
Fresh Water Holding Tank (gal) ^{6,7}	65	65	65	65	65	65
Grey Water Holding Tank (gal) ^{6,7}	61	61	61	80	61	80
Black Water Holding Tank (gal) ^{6,7}	40	40	40	40	40	40
Propane Capacity (lbs) ^{6,7}	60	60	60	60	60	60
Tire Size (Load Range)	ST235/ 80R 16D	ST235/ 80R 16D	ST235/ 80R 16D	ST235/ 80R 16D	ST235/ 80R 16D	ST235/ 80R 16D

1. GVWR (Gross Vehicle Weight Rating) is the maximum permissible weight of this trailer when fully loaded. It includes all weight at the trailer axle(s) and tongue or pin.
2. All dry weights are based on the standard model and do not include optional features or equipment.
3. Cargo Carrying Capacity is determined by subtracting Gross Dry Weight from GVWR. Cargo includes all fluids, optional features, equipment, and personal cargo.
4. Length is measured from hitch or pin box to rear bumper (excludes accessories). Trailer length includes hitch; fifth wheel includes standard pin box.
5. Actual height may be lower, based on option offerings. Consult with your dealer to obtain actual height for the unit you are interested in.
6. Approximate.
7. Water weight equals 8.3 lbs per gallon. Propane weight equals 4.2 lbs per gallon.

8. Hitch weights are dependant upon how the trailer is equipped with options, on-board cargo, and tank fluid levels. Actual hitch weights may be higher or lower than shown. It is recommended that the tow vehicle and hitch for your trailer have sufficient capacity to accommodate the Gross Vehicle Weight Rating of the selected trailer.

N/A – Not available at the time of printing.

IMPORTANT— PLEASE READ: Product information, photography and illustrations included in this publication were as accurate as possible at the time of printing. For further product information and changes, please visit our website at www.fleetwoodrv.com or contact your local Fleetwood dealer. Prices, materials, design and specifications are subject to change without notice. All weights, fuel, liquid capacities and dimensions are approximate. Fleetwood has designed its recreational vehicles to provide a variety of uses for customers. Each vehicle features optimal seating, sleeping, storage and fluid capacities. The user is responsible for selecting the proper combination of loads (i.e., equipment, fluids, cargo, etc.) to ensure that the vehicle's capacities are not exceeded.

WHY TERRY LX?



PASSION

We're truly passionate about the RV lifestyle. Fleetwood was founded by RV enthusiasts, and that tradition continues today.



QUALITY

There's no cutting corners. Skilled craftsmen build every Fleetwood RV for maximum durability and longevity.



WARRANTY

Exclusive RV Ownercare warranty. See your Fleetwood dealer for details.



SERVICE

Help is nearby. When you need an upgrade or repair, you'll find Fleetwood dealers all across North America ready to assist you.



TRUST

More people trust Fleetwood. After all, we've spent over 50 years perfecting RVs, earning the loyalty of generations of RVers.

CONTACT US

To locate a dealer near you, visit our website at www.fleetwoodrv.com or call 1-800-444-4905. We can also be contacted at Fleetwood Customer Relations, P.O. Box 1007, Decatur, IN 46733.

FLEETWOOD TRAVELCADE CLUB

As a Fleetwood owner, you're invited to become a member of the Fleetwood Travelcade Club. It's the perfect way to meet other Fleetwood owners who love to travel across America and share in the RV lifestyle. Visit our website at www.fleetwoodrv.com/owners_clubs to learn more and join the fun.

RV OWNERCARE

See your local dealer for complete details.

IMPORTANT—PLEASE READ

Product information, photography and illustrations included in this publication were as accurate as possible at the time of printing. For further product information and changes, please visit our website at www.fleetwoodrv.com or contact your local Fleetwood dealer. Prices, materials, design and specifications are subject to change without notice. All weights, fuel, liquid capacities and dimensions are approximate. Fleetwood has designed its recreational vehicles to provide a variety of uses for customers. Each vehicle features optimal seating, sleeping, storage and fluid capacities. The user is responsible for selecting the proper combination of loads (i.e.: equipment, fluids, cargo, etc.) to ensure that the vehicle's capacities are not exceeded.

Your Local Fleetwood Dealer Is:



TO OUR CUSTOMERS...

To make sure that you get the maximum satisfaction out of your recreational vehicle purchase, there are several things you should know:

1. Learn all you can about the travel trailer or fifth wheel you're planning to buy. Don't rely on word of mouth. Get the facts about the actual trailer length, width, unloaded weight with options, Gross Vehicle Weight Rating, and Cargo Carrying Capacity. These are usually available in the manufacturer's sales literature or from the Cargo Carrying Capacity Label located in each trailer. Be sure to check this information before you decide which unit to buy.
2. Verify the towing capacity of your tow vehicle. If you don't know, or aren't sure, you can ask at your automotive dealership or contact your tow vehicle manufacturer. Be sure to match your tow vehicle's tow rating to the Gross Vehicle Weight Rating (not dry weight) of the trailer you are considering. To help Fleetwood travel trailer customers estimate this total weight, our Gross Vehicle Weight Ratings reflect the maximum weight of the trailer when fully loaded for camping. Be sure the weight of the tow vehicle plus the Gross Vehicle Weight of your trailer does not exceed the Gross Combined Weight Rating (GCWR) of the tow vehicle.

Taking these simple steps before you buy will help ensure that your trailer and tow vehicle combination is just what you wanted. See you on the trail!

tread lightly!®
ON LAND AND WATER



FLEETWOOD
Travel Trailer Division