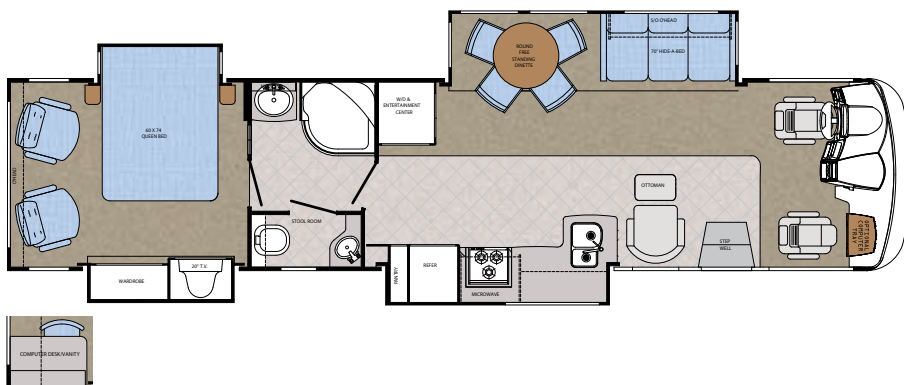




The floor plan shows a large suite with the following features:

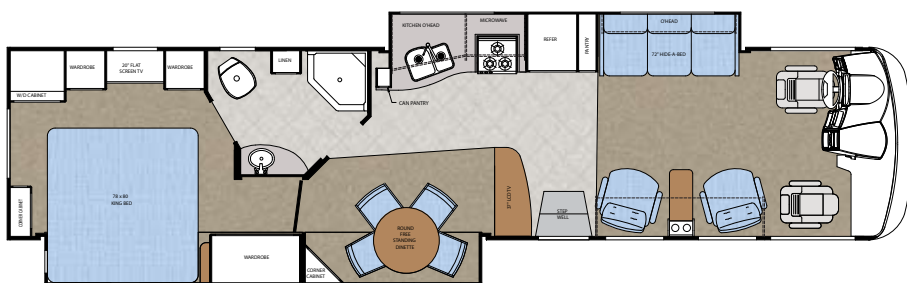
- Entrance:** A large open area with a curved wall on the right, featuring two armchairs and a coffee table.
- Living Area:** A sofa and a television are positioned against the right wall.
- Kitchenette:** Includes a refrigerator, a three-burner electric cooktop, an oven, a microwave, and a sink with a faucet.
- Bathroom:** Contains a toilet, a bathtub/shower area, and a vanity with a mirror.
- Bedroom:** Features a large queen bed and a dresser.
- Storage:** A closet and a linen closet are located near the entrance.
- Dimensions:** The suite is 10' 0" wide by 12' 0" deep.

Model 8388



Chassis	Workhorse
Engine	8.1 V8
Fuel	75
GVWR	24,000
Length	38'-8"
Width	100"
Height w/AC	12'-0"
Interior Height	84"
Wheelbase	250"
Fresh	70 gal.
Grey	50 gal.
Black	50 gal.
LP Gas Tank	85 lbs.
Furnace (BTU's)	40,000 / 25,000
A/C Front/Rear (BTU's)	13,500 / 13,500
Water Heater w/DSI	10 gal.

Model 8389



Chassis	Workhorse
Engine	8.1 V8
Fuel	75
GVWR	24,000
Length	38'-8"
Width	100"
Height w/AC	12'-0"
Interior Height	84"
Wheelbase	266"
Fresh	50 gal.
Grey	50 gal.
Black	50 gal.
LP Gas Tank	85 lbs.
Furnace (BTU's)	40,000 / 25,000
A/C Front/Rear (BTU's)	13,500 / 13,500
Water Heater w/DSI	10 gal.

Sun Voyager

*Holding tank capacities (both fresh water and waste water) are volume calculations based on overall tank dimensions. The capacities may differ from published calculations due to the result of tank installation, tank material variation, tank fitting locations and other plumbing variables.

Sun Voyager

Chassis

- 24,000 GVWR WORKHORSE CHASSIS (REQUIRES 6000 LB HITCH) (8388 8389)

Exterior/Structural

- "Cradle of Strength" Construction:
 - Welded Steel Sub-Floor Truss System
 - 1-1/2" Tubular Metal Cage Construction on Sidewalls & Roof
 - Insulated Floors w/Virtually Seamless Structurewood Decking
 - Vacuum-Bond Laminated 2" Thick Sidewall Construction Smooth Filon Fiberglass
- ALUMINUM SKIN TRUNK DOORS W/SLAM LATCHES
- PRE-MOLDED FRONT & REAR FIBERGLASS CAPS
- LAMINATED FIBERGLASS ROOF
- SLICK WHITE FIBERGLASS EXTERIOR
- FULL BODY PAINT
- THERMOPANE WINDOWS

Heating & Cooling

- DASH A/C
- (1) 40,000 BTU & (1) 25,000 BTU FURNACE (8388 8389)
- (2) 13,500 BTU LOW PROFILE DUCTED AIR CONDITIONERS
- 3-SPEED FANTASTIC ATTIC FAN

Miscellaneous

- LEVELING SYSTEM (8388, 8389)
- 5000 LB TRAILER HITCH
- INTERIOR S.S. ENTRY ASSIST HANDLE
- STORAGE TUB(S) IN BASEMENT
- CARPETED STORAGE BINS
- CARPETED ENGINE COVER
- MUD FLAPS (FRONT & REAR)
- STAINLESS STEEL WHEEL INSERTS
- DELUXE METAL WRAP MAIN AWNING
- SLIDE OUT TOPPER (S)
- SUNROOM SLIDE OUT TOPPER (8388)
- RALLY HOOK UP
 - HOSE FAUCET
 - SHOWER HOSE, HEAD & FAUCET
 - TELEPHONE HOOKUP
 - CABLE TV HOOKUP
 - PAPER TOWEL ROLL DISPENSER
- HEATED HOLDING TANKS
- FIRE EXTINGUISHER W/STRAP
- REAR LADDER
- DASH COMPUTER WORK STATION W/12 V & 110 V OUTLETS
- COAT HOOK

Décor

- MAPLE HARDWOOD INTERIOR
- FLOOR TILE IN KITCHEN, BATH & ENTRY
- DAY/NIGHT PLEATED SHADES
- METAL MINI BLIND KITCHEN
- MIRRORING MEDICINE CABINET
- PRIVACY CURTAIN
- DECORATIVE BEVELED MIRROR DOORS ABOVE SOFA

- DECORATIVE CROWN CEILING MOLDING
- VINYL CEILING LINER

Electrical

- EMERGENCY START SWITCH IN DASH
- AM/FM/CASSETTE STEREO W/CD PLAYER & SPEAKERS
- FLUORESCENT CEILING LIGHTING
- WALL SWITCHES FOR ALL CEILING LIGHTS
- WALL CLOCK
- MAP LIGHTS
- CB ANTENNA
- ANTENNA W/AMPLIFIER, BOOSTER & 2 JACKS
- AUTO ELECTRIC STEP
- 19" FLAT SCREEN COLOR TV IN BEDROOM (NA 8389)
- 32" LCD COLOR TV ON FEATURE WALL (8388)
- 19" LCD COLOR TV IN BEDROOM (8389)
- 19" LCD COLOR TV IN DINING ROOM (8389)
- 37" LCD COLOR TV IN LIVINGROOM (8389)
- DSS PREP (TRIPOD)
- DVD READY
- COLOR BACK UP MONITOR W/AUDIO
- OVERHEAD DEFROST BLOWER
- LIGHTED EXTERIOR STORAGE BINS
- (1) PHONE JACK IN KITCHEN & (1) IN BEDROOM

Furnishings

- 2-TONE COPILOT SEAT
- 2-TONE PILOT SEAT
- (2) BEDROOM CHAIRS W/ OTTOMANS (8388)
- SOFT TOUCH EURO RECLINER & OTTOMAN (PS) (8388)
- SOFT TOUCH RECLINER
- CLOTH SLEEPER (H-A-B) SOFA (DS)
- (2) EURO RECLINERS W/FLIP UP TABLE (8389)
- FS ROUND DINETTE W/(2) RESIDENTIAL DINING CHAIRS (8388 8389)
- VANITY BENCH (8389)
- 60 X 74 BED W/DELUXE INNERSPRING MATTRESS (8388)
- 78 X 80 KING BED W/INNERSPRING MATTRESS & POWER LIFT (8389)
- 3 POINT SEAT BELTS
- (2) THROW PILLOWS (LIVING ROOM) & (2) BEDROOM PILLOWS

Appliances

- DOUBLE DOOR 2 WAY REFER
- ROLL OUT PANTRY (NA W/SBS REF)
- MONITOR PANEL
- 30" OTR CONVECTION MICROWAVE
- 3-BURNER TOP
- FLUSH STOVE TOP COVER
- 10 GAL. DSI WATER HEATER
- 85# LP GAS BOTTLE
- CARBON MONOXIDE DETECTOR
- LP GAS LEAK DETECTOR
- WASHER/DRYER PREP (8388 8389)

Power

- GENERATOR READY
- (2) 12 V AUXILIARY BATTERIES (GROUP 27)

- BATTERY DISCONNECT
- 50 AMP SERVICE W/AUTO TRANSFER SWITCH & 80 AMP CONVERTER

Bath

- SHOWER W/GLASS DOOR & SURROUND (8389)
- RADIUS TUB/SHOWER W/RADIUS GLASS DOOR (8388)
- POWER VENT IN COMMODORE & SHOWER AREA
- PORCELAIN PEDAL STOOL W/SPRAYER
- HOLDING TANK FLUSH KIT
- SKY DOME IN BATH

Packages

- XL PACKAGE
 - CORIAN KITCHEN COUNTERTOP
 - CAP MOUNT HEATED & REMOTE EXTERIOR MIRRORS W/PAINT
 - HARDWOOD DINETTE TABLE
 - 6-PANEL REFER DOOR INSERTS

Popular Options

- ☐ DIESEL PACKAGE (8388 8389)
 - 26,000 GVWR 300 HP CUMMINS
 - FREIGHTLINER, 80 GAL FUEL TANK W/STEEL WHEELS
 - 5.5 ONAN QUIET DIESEL GENERATOR
- ☐ POWER SUNVISORS
- ☐ SAND & BUFF
- ☐ LOGO REAR ROCK GUARD
- ☐ 5.5 ONAN GAS GENERATOR
- ☐ 7.0 KW ONAN GAS GENERATOR
- ☐ 7.5 KW GENERAC GAS GENERATOR
- ☐ 15,000 BTU LOW PROFILE DUCTED A/C IPO 13,500 BTU A/C
- ☐ SURROUND SOUND SYSTEM W/DVD PLAYER
- ☐ GPS NAVIGATION SYSTEM W/ MP3 PLAYER
- ☐ KVH SATELLITEDISH
- ☐ SOFT TOUCH SLEEPER (H-A-B) SOFA IPO CLOTH SLEEPER (DS)
- ☐ 2-TONE 6-WAY POWER PILOT SEAT
- ☐ 2-TONE 6-WAY POWER COPILOT SEAT
- ☐ COMPUTER DESK, (1) CHAIR IPO (2) BEDROOM CHAIRS (8388)
- ☐ (2) FOLDING CHAIRS
- ☐ LARGE 2-WAY REFER W/ICEMAKER & PURIFIER
- ☐ SIDE BY SIDE REFER W/ICE MAKER & PURIFIER
- ☐ COMBO WASH/DRY W/OUTSIDE VENT
- ☐ 2000 WATT INVERTER WITH AUTO START