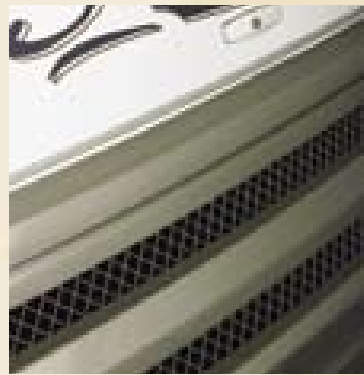
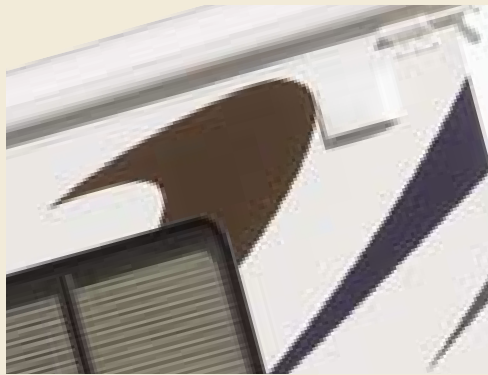


SurfSide

T W O T H O U S A N D S I X



NATIONAL RV, INC. • PERRIS, CALIFORNIA



Surf Side

Built with the same attention to quality, comfort and style that have been the hallmark of National RV motorhomes for decades, the all new Surf Side is the perfect recreational vehicle for young families and adventure seekers.



1 29A CARLSBAD-CHERRY Even Surf Side models with compact overall lengths feature abundant living space.

2 29A CARLSBAD-CHERRY Comfortable Kustom-Fit® cockpit seats swivel to provide additional living area seating.

3 29A CARLSBAD-CHERRY Fully equipped kitchen includes oven, cooktop, microwave and 6 cu. ft. refrigerator. A convection microwave is optional.

4 29A CARLSBAD-CHERRY Bedrooms feature loads of wardrobe and storage space, plus a vivid 20" flat screen TV.

5 29A CARLSBAD-CHERRY The bedroom slide-out (most models—see floor plan drawings on next page) provides generous bedroom space.

FLOOR PLANS

MODEL DS29A

- Maximum livability in a coach of surprisingly compact overall size
- Two spacious roadside slide-outs
- Unobstructed curbside patio area
- Highly functional partial-slideout corner galley
- Split bathroom layout
- Full wall wardrobe, entertainment and storage unit in bedroom
- Rear bay window



MODEL SE33B

- Huge roadside living area slide-out with sleeper sofa and dinette
- Opposing dual sofas
- Spacious angled galley
- Fully enclosed private bathroom
- Head-to-rear queen bed with night stand and wardrobe
- Large windows on opposite bedroom walls



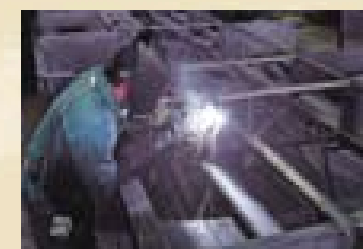
MODEL DS32C

- Two spacious slide-outs
- Huge roadside living area slide-out with sleeper sofa and dinette
- Comfortable barrel chair
- Spacious angled galley
- Open bathroom layout with private toilet room
- Fiberglass stand-or-sit shower
- Full wall wardrobe, entertainment and storage unit in bedroom
- Rear bay window



MODEL DE34D

- Two spacious roadside slide-outs
- Unobstructed curbside patio area
- Spacious angled slide-out galley
- Unique side-aisle floor plan with two bathroom entrances
- Huge fully enclosed bathroom
- One-piece fiberglass stand-or-sit shower
- Rear bay window



DuraFrame®

Like all National RV motorhomes, Surf Side is built on the patented DuraFrame® Chassis System, constructed of fully welded tubular and plate steel to provide a solid coach foundation unmatched by competitors at any price.



Compartment Doors

Side-hinged for easy access, Surf Side's compartment doors are constructed of formed aluminum, laminated with block foam insulation and durable automotive style latches.

2006 SURF SIDE • KEY FEATURES

EXTERIOR & COACH CONSTRUCTION

- DuraFrame® patented steel sub floor construction
- Tubular steel framed laminated floor, roof and sidewalls
- One-piece fiberglass roof skin
- Full panoramic tinted windshield
- Electric slide-out room(s)
- Lighted storage compartments and service area
- Front and rear molded high gloss fiberglass caps and integrated bumper assembly
- Black aluminum rear ladder (option)
- 82" interior height
- Steel insulated front bulkhead
- Custom partial paint and vinyl graphics
- Fuel fill door in rear bumper
- Aluminum exterior storage compartment doors with gas struts, side-hinged for easy access on most applications
- Automotive under-coating (option)

COCKPIT FEATURES

- Big button AM/FM/CD/satellite-ready/cassette stereo with four speakers
- Dash stereo input jack (for MP3 player, etc.)
- Driver and passenger reading lights with switches
- Custom designed dash with full gauge package
- Pantographic windshield wipers
- Oversized tilt steering wheel with power steering
- Motorized rear vision system with microphone (option)
- Power heated high-mount side mirrors
- Passenger work station with 12V/120V receptacle and phone jack in console
- 4-point leveling jacks

FURNITURE, APPLIANCES & ACCESSORIES

- Kustom Fit® fabric cockpit seating
- OptimaLeather® power cockpit seating package (option)
- Fabric sleeper sofa with slide-in armrests
- Freestanding fabric barrel chair (DS32C only)
- 6 cu.ft. double door refrigerator
- Microwave oven
- High output three burner cooktop with range/oven
- Convection microwave oven with drawers below in place of conventional oven (option)
- 24" flat screen TV in living area
- 20" flat screen TV in bedroom
- Home theater entertainment package (option)
- DVD/VCR combo with remote (option)
- Exterior entertainment center (option)
- Convenience package (option): (4) 2-way radios, rechargeable flash light & vacuum, exterior shower, soap dispenser & paper towel holder
- Kingdome® automatic stationary satellite dish (option—pre-wire is standard)

INTERIOR DECOR & FIXTURES

- Maple paneling and doors (cherry optional)
- Drawers with ball bearing roller guide design
- Mini blinds (day/night shades optional)
- Armstrong vinyl flooring in living area and bathroom
- Armstrong vinyl flooring throughout coach (option)
- Plush carpet with deluxe pad in cockpit and bedroom
- Booth dinette with flip open storage access
- Raised panel cabinet doors in living and kitchen areas
- Corian® kitchen counter top with extension
- Porcelain steel sink with wood cutting block sink cover
- Mirrored wardrobe with storage below
- Queen bed with lift up bed top storage compartment
- Residential-style queen mattress

PLUMBING & ELECTRICAL SYSTEMS

- 30 Amp 120V distribution panel and shore power cord
- 12V re-settable push button house circuit breaker distribution panel
- 4.0 kw Onan® Microlite series generator
- 55 amp converter/charger
- 5.5kW Onan® Marquis series generator, 1000 watt inverter and second A/C (option)
- Battery disconnect switch for house batteries
- Systems monitor panel with battery voltage meter
- Three water pump switches (kitchen, bath and service compartment)
- 120V patio receptacle, phone jack and TV receptacle
- Heated systems compartment with easy access
- On-demand water system and water pump
- Black tank rinse system
- Winterization antifreeze inlet to pump
- Water heater bypass valve
- Pressurized water fill with integrated regulator
- 6 gallon gas water heater with DSI
- One-piece fiberglass shower with decorative glass door
- Toilet with sprayer

WINDOWS & DOORS

- Dual pane radius tinted safety glass windows (option)
- Patio awning with vinyl cover
- Bedroom rear picture window (N/A on SE33B)
- 30" Radius entrance door
- Power double entrance step
- Ventilated lounge slide-out side windows (DS32C & SE33B only)
- Slide-out topper awnings

SAFETY FEATURES

- Fog lights and rear third brake light
- Deadbolt lock on entry door
- Fire extinguisher
- Smoke, carbon monoxide (CO) and LPG detectors
- Emergency exit window

CLIMATE CONTROL

- 13,500 BTU ducted roof air conditioner
- 11,000 BTU second roof A/C & Electronic Climate Control System (option—requires 5.5kw gen option)
- 35,000 BTU ducted furnace with electronic ignition
- 12V Fan-Tastic® Vent with wall thermostat
- Cockpit dash fans (option)

GRAPHICS



BAYCLIFF



CARLSBAD

WOODS



CHASSIS & DRIVETRAIN

CHASSIS	Ford Super Duty F-53
Tires	245/70R 19.5-F
Wheels	10-lug 19.5" x 6.75" steel
Brakes	Power, Hydraulic with ABS
Axle Ratio	5.38:1
Fuel Capacity	75 gallons
Hitch	5000lb. Class III; 7-pin connector
Alternator	130 Amp
Chassis Warranty	3 years/36,000 Miles
ENGINE	Ford Triton V-10
Displacement	6.8L (415 CID)
Peak HP	362 @ 4,750 RPM
Peak Torque	457 @ 3,250 RPM
Engine Warranty	3 years/36,000 miles
TRANSMISSION	Ford Torq-Shift
Trans Type	5-speed automatic overdrive
Trans Warranty	3 years/36,000 miles

DECOR FABRICS



BAYCLIFF



CARLSBAD



BOCA RATON

WEIGHT RATINGS (POUNDS)	DS29A	DS33B	SE32C	DE34D
Gross Vehicle Weight Rating (GVWR)	18,000	20,500	20,500	20,500
Gross Combined Weight Rating (GCWR)	26,000	26,000	26,000	26,000
Front Gross Axle Weight Rating	7,000	7,000	7,000	7,000
Rear Gross Axle Weight Rating	11,000	13,500	13,500	13,500
MEASUREMENTS	DS29A	DS33B	SE32C	DE34D
Wheelbase	190"	208"	208"	228"
Overall Length ¹	29' 10"	33' 10"	32' 10"	34' 10"
Overall Height ²	11' 8"	11' 8"	11' 8"	11' 8"
Interior Height	81¾"	81¾"	81¾"	81¾"
Interior Width	97¼"	97¼"	97¼"	97¼"
Exterior Width	100¾"	100¾"	100¾"	100¾"
TANK CAPACITIES (GALLONS)	DS29A	DS33B	SE32C	DE34D
Fresh Water ³	80	80	80	80
Gray Waste	45	42	42	42
Black Waste	40	40	41	40
LP-Gas ⁴	20.3	20.3	20.3	20.3

NOTES: ¹ Overall length measurement given does not include rear ladder.

² Overall height measurement given includes A/C unit (subtract 10" for coach height without A/C).

³ Fresh water capacity given includes water heater capacity of 6 gallons.

⁴ LP-Gas capacity given is liquid volume.



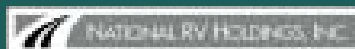
NATIONAL R.V., INC.

3411 N. Perris Boulevard
Perris, California 92571
(800) 322-6007 • Fax (951) 943-8498

www.nationalrv.com

©2005 National R.V., Inc. Due to continuing product improvements, colors, specifications and equipment are subject to change without notice.

V2 • DEC 05



National RV, Inc. is a subsidiary of National RV Holdings, Inc., a public company whose shares are traded on the New York Stock Exchange under the symbol **NVH**. Please see www.nrvh.com for more information.



YOUR AUTHORIZED SURF SIDE DEALER IS: