



2007|Ellipse





THE POWER OF DIESEL. THE COMFORT OF ITASCA.

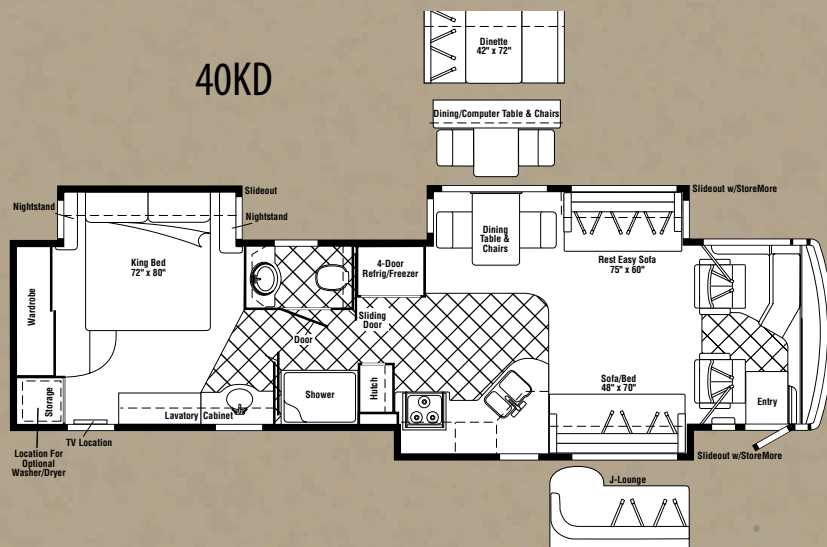
One adventure in the Itasca Ellipse and you'll be a diesel enthusiast for life. Choose from four distinct models, including a quad-slideout design, each built on the heralded Evolution Chassis®. Its formed-steel chassis rail construction works in conjunction with our Smart Storage™ system to provide more plentiful mid-section storage that is easy to access. Inside features like solid-surface countertops, vinyl tile floorcovering, opposing flat-floor slideouts in the living room, the all new 40TD and over 7'2" of interior ceiling height make you proud to call the 2007 Itasca Ellipse your home on the road.

Floorplans

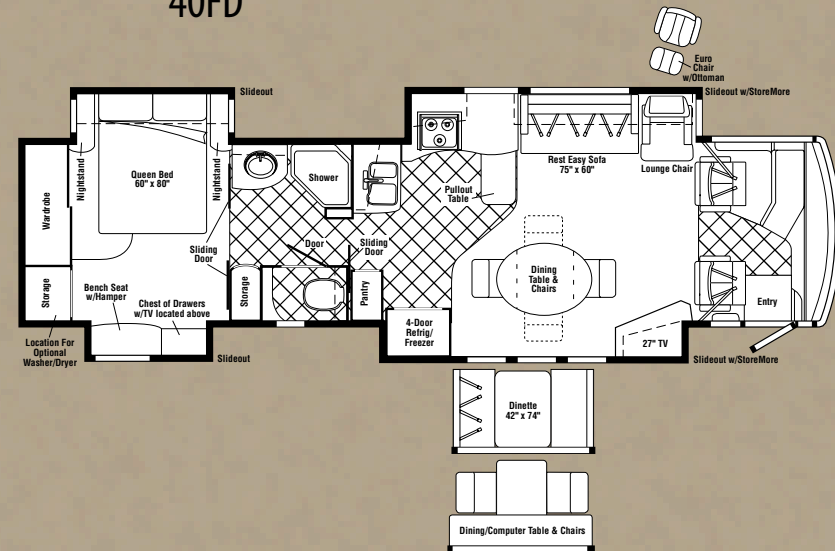
36LD



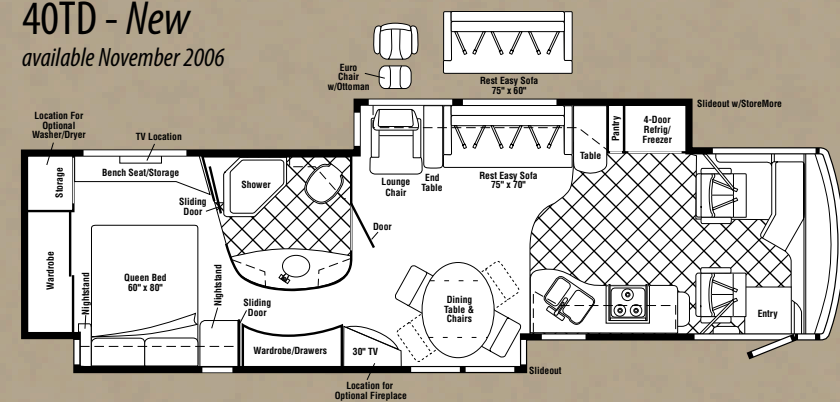
40KD



40FD



40TD - New
available November 2006



Note: Dimensions shown are for sleeping space only and may vary due to styling differences. Dashed lines denote overhead storage areas.

Interior Decor



Peppercorn



Baltic Sea



Copper Canyon



Concert Cherry



Sierra Maple



Washed Maple

Specifications

Weights & Measures	36LD	40FD	40KD	40TD NEW
Length	36'7"	39'11"	39'11"	39'11"
Exterior Height ¹	12'3"	12'4"	12'4"	12'3"
Exterior Width ²	8'5.5"	8'5.5"	8'5.5"	8'5.5"
Exterior Storage ³ (cu. ft.)	109.9	133.5	134.1	138.8
Awning Length	20'	20'	20'	20'
Interior Height	7'2.5"	7'2.5"	7'2.5"	7'2.5"
Interior Width	8'0.5"	8'0.5"	8'0.5"	8'0.5"
Freshwater Capacity w/Heater ⁴ (gal.)	106	106	106	107
Holding Tank Capacity - Black/Gray ⁴ (gal.)	54 / 54	57 / 73	57 / 72	52 / 86
LP Capacity ⁵ (gal.)	31	31	31	31
Fuel Capacity (gal.)	100	100	100	100
GCWR ⁶ (lbs.)	39,410	42,000	42,000	42,000
GVWR (lbs.)	29,410	32,000	32,000	32,000
GAWR - Front (lbs.)	10,410	12,000	12,000	12,000
GAWR - Rear (lbs.)	19,000	20,000	20,000	20,000
Wheelbase	228"	267"	267"	267"

1. The height of each model is measured to the top of the tallest standard feature and is based on the curb weight of a typically equipped unit. The actual height of your vehicle may vary by several inches depending on chassis or equipment variations. Please contact your dealer for further information.
2. Floorplans feature a wide-body design — over 96 inches. In making your purchase decision, you should be aware that some states restrict access on some or all state roads to 96 inches in body width. Before making your purchase decision, you should confirm the road usage laws in the states of interest to you.
3. The load capacity of your motor home is designated by weight, not by volume, so you cannot necessarily use all available space when loading your motor home.
4. Capacities are based on measurements prior to tank installation. Slight capacity variations can result due to installation applications.
5. Capacities shown are tank manufacturer's listed water capacity (W.C.). Actual filled LP capacity is 80% of listing due to overfilling prevention device on tank.
6. Actual towing capacity is dependent on your particular loading and towing circumstances, which includes the GVWR, GAWR and GCWR, as well as adequate trailer brakes. Please refer to the chassis operator's manual of your vehicle for further towing information.

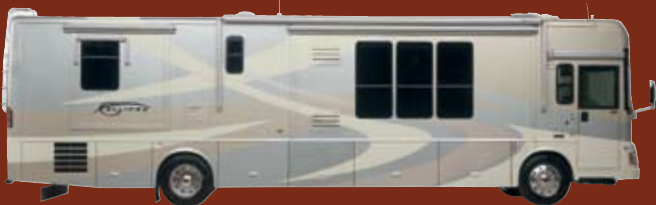
Winnebago Industries" continuing program of product improvement makes specifications, equipment, model availability and prices subject to change without notice.



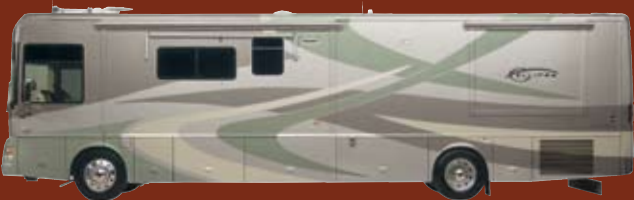
Seat belts are your most important hookup. Always buckle up.
NYSE listing: WGO

Visit www.winnebagoind.com for virtual product tours and the latest product updates.
2006 Winnebago Industries Inc., Forest City, Iowa 50435. Printed in USA.

Exterior Decor



Cream



Sea Spray



Red Sky