

EXPEDITION

CLASS A DIESEL

FUNNY HOW A SIMPLE CHANGE OF SCENERY
CAN CHANGE YOUR ENTIRE OUTLOOK.



2008 Expedition

 FLEETWOOD®

PERFECT FOR TRIPS TO A NEW STATE OF MIND.

Whether it's a quick getaway or a cross-country tour, stress takes a holiday once you head out in your Expedition. You've got the great outdoors to explore, and plenty of scenic real estate to enjoy indoors, too. Your living space increases with triple, quad and full-wall slide-outs. The feeling of spaciousness is heightened with 7-foot ceilings and large windows that flood the coach with natural light. The tension of work, schedules and deadlines soon becomes a dim memory.

Quality



There's no cutting corners. Skilled craftsmen build every Fleetwood RV for maximum durability and longevity.



EXPEDITION



THE ENTERTAINMENT SYSTEM is second to none, with a 26" Samsung® LCD HDTV (select models) and a 5.1 Dolby home theater system that includes surround sound, DVD, CD and an AM/FM radio. Now that's entertainment.



THE PASSENGER SEAT is covered with supple Ultraleather™ that looks and feels like leather, but resists stains and cleans easier. An optional electric footrest lets you kick your feet up, while the power adjustments position the chair just right.



THE ERGONOMIC COCKPIT wraps around you to put all the controls within easy reach. The driver's area has been designed for comfort, even on those marathon drives. Add optional power visors to reduce the sun's glare.

Why Buy Expedition?





EXPEDITION 38V shown in Ebony interior décor with Plantation Cherry wood cabinetry.

Contemporary Interior Décor

The décor is so stylish, it causes many people to remark, "This is nicer than my house."

Spacious Living

The floor plans are designed to maximize the roomy feeling, and the tall ceilings and slides provide even more space.

Name Brand Appliances/Electronics


From the galley to the entertainment system to the bedroom, you'll find name brand appliances, electronics and furnishings.

Top-of-the-line Components

Expedition is outfitted with the finest, from the plush, padded carpeting to the cedar-lined wardrobe in the bedroom suite.

Superior Ride and Handling

Fleetwood diesel coaches have earned a reputation for excellent handling, road manners and comfort.



HIT THE ROAD WITH THE NAMES YOU TRUST.

You'll recognize the brands on all the appliances in the galley, like the GE® convection microwave oven and the Norcold® refrigerator. More household names are found around the coach, such as Samsung®, Restonic® and DuPont®. What this means is that the quality of the appliances and electronics is first-rate, matched only by the superior components. Expedition boasts solid surface countertops and Flexsteel® furniture draped in luxurious Ultraleather™. Clearly, you'll travel in the best of company.

Trust



More people trust Fleetwood. After all, we've spent over 50 years perfecting RVs, earning the loyalty of generations of RVers.



EXPEDITION



THE DINETTE is underneath an oversized picture window, so you can enjoy a view of the setting sun and your spaghetti dinner at the same time. How about a game of checkers afterward? Right below the seat is a pull-out drawer that's the perfect place to store games.



THE CABINETRY features warm wood, finished with elegant, brushed nickel hardware. Inside, the cabinets are deep enough to accommodate full-size dishes. The lining prevents scratching and reduces noise.

THE UNDER-COUNTER TV/DVD PLAYER (optional) lets you watch your favorite morning show while you brew some coffee. The 10" LCD TV monitor flips down and swivels to the best vantage point. It includes a CD player and AM/FM radio.





THE GALLEY is fully equipped to help you whip out meals quickly. The convection microwave cooks faster than a standard oven, and the cooktop offers three burners. The galley sink offers clean, drinkable water, thanks to the whole coach water filtration system.



SOLID SURFACE COVERS fit neatly over the galley sink and range to provide more countertop space instantly. And they're made of the same solid surface material as the countertops, so they are also non-porous and highly resistant to stains and scratches.


THE REFRIGERATOR AND PANTRY keep all your foodstuffs in one place. The Norcold® refrigerator offers 12 cu. feet of space, and the four-door design allows you to keep pizza boxes or party trays inside. The pantry features pull-out baskets for fast snack access when the munchies strike.



FULL-EXTENSION DRAWERS allow you to store things at the very back. There's even a super-deep pots & pans drawer that's big enough for your jumbo spaghetti pot.



THE UNDER SINK STORAGE holds everything you need to keep your coach sparkling clean. Company's coming and you want to show your Expedition off!



LEAVE THE DRAB PLAID TO THE BACKPACKERS.

Getting away doesn't have to mean leaving your sense of style behind. With a polished, contemporary interior design, Expedition closely resembles a spread in your favorite high-end home décor catalog. The fabrics, flooring and wood cabinetry all work splendidly together. Special touches like the detailed molding and designer-look lighting fixtures make it seem like a well-appointed home. Expedition is proof that camping really can be elegant.

Passion



We're truly passionate about the RV lifestyle. Fleetwood was founded by RV enthusiasts, and that tradition continues today.

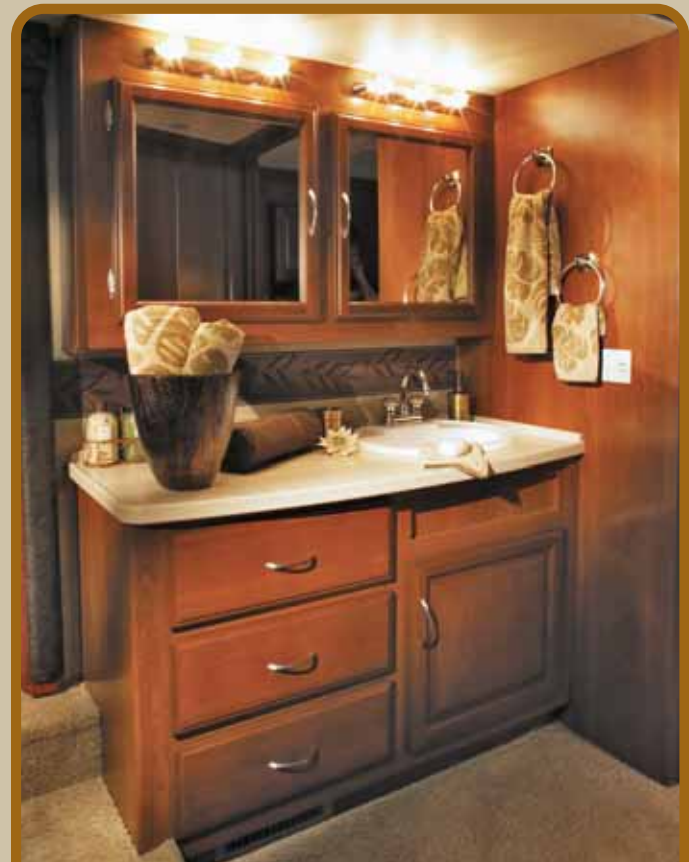


EXPEDITION



THE WASHER/DRYER (optional) ensures that you'll never run out of clean clothes to wear. And it's cleverly concealed behind the cabinetry.

THE VANITY WITH SINK provides another area to shave, primp and get ready for a big night out (models 38S and 38V only). Or, a romantic night in!

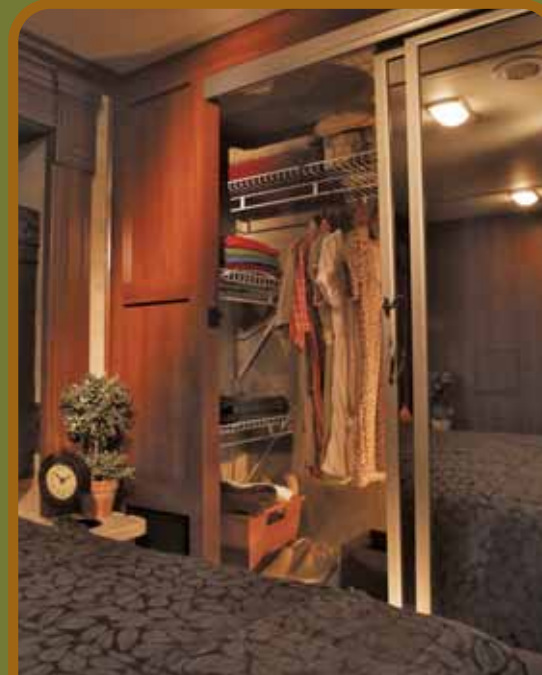




THE BEDROOM SUITE offers plenty of room to unpack and relax, thanks to a 30" bed slide where many competitors only slide 18". The bed is nothing short of dreamy. With a restful queen-size Restonic® innerspring mattress, a good night's sleep is moments away. Just be sure to flick off the remote generator switch on the bedside table before drifting off.



THE LCD TV AND DRESSER creates your own private space for relaxing. After you put your clean laundry away in the dresser, you can kick your feet up in the recliner (38V model only), and enjoy a movie on the Samsung® 19" high-definition TV.



MIRRORED WARDROBE on the wall, who's the largest clotheshorse of them all? You can be, with plenty of closet space with built-in organizers.

IT'S STUNNINGLY GRAPHIC. THE EXTERIOR, THAT IS.

The expressive, artistic graphics on the exterior of Expedition certainly make a grand impression. The ultra-smooth, fiberglass vacu-bonded walls feature full-body paint standard for a luxurious appearance. DuPont® paint is carefully applied in a two-stage process to ensure beautiful results, a longer life and easier maintenance.

EXPEDITION EXTERIORS

DESERT SAND
SCHEME 1*



PATINA
SCHEME 1*



WHITE DIAMOND
SCHEME 1*



SILVER LEAF
SCHEME 1*



SILVER LEAF
SCHEME 2*



* Each color is available in both Scheme 1 and Scheme 2 graphics. See your Fleetwood dealer or visit our website at www.fleetwoodrv.com to view all graphic and color choices.



EXPEDITION

NOPE, IT'S NOT A FANCY HOME FURNISHINGS CATALOG.

These fabrics and woods represent the most current tastes in interior design. And while you can't order them for your home, you can have them in your Expedition. Just choose from three color palettes and two warm wood finishes.

INTERIOR DÉCORS

SPA

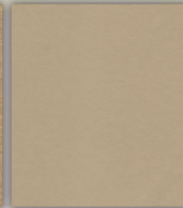
Living/Dining Room



Dinette Cushions



Sofa



Ultraleather™
Driver and Front
Passenger Seats,
Sofa (optional)

Bedroom



Headboard &
Bedspread



Accent Fabric



Throw Pillows

Living/Dining Room



Dinette Cushions

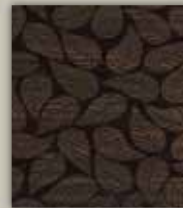


Sofa



Ultraleather™
Driver and Front
Passenger Seats,
Sofa (optional)

Bedroom



Headboard &
Bedspread



Accent Fabric



Throw Pillows

EBONY

Living/Dining Room



Dinette Cushions



Sofa



Ultraleather™
Driver and Front
Passenger Seats,
Sofa (optional)

Bedroom



Headboard &
Bedspread



Accent Fabric



Throw Pillows

BLUE TOPAZ

WOOD FINISHES



Plantation Cherry



Summit Ash

IF ONLY TEENAGERS WERE THIS EASY TO HANDLE.

While the average teenager may not be responsive or well-mannered, your Fleetwood diesel certainly will be. The chassis has a 55-degree wheel cut to help you make tighter turns, and a lower center of gravity for a more stable, comfortable ride. Fleetwood's patented Power Platform® is one reason it drives so well. Combine that with a Cummins® ISB 325HP 6.7L diesel engine and 750 foot pounds of torque, you've got the power to tame steeper hills. All without the engine hump or front engine noise of a gas model.

- ① **ONE-PIECE WINDSHIELD** is a new feature this year, providing a panoramic, wide-open view without a center divider.
- ② **STYLISH HEATED MIRRORS** look cool, but stay warm to prevent dew or frost build-up.
- ③ **AWNINGS** for the patio and entry door keep the sun's rays from heating up your coach inside, and provide shade outside. (Electronic awnings optional.)
- ④ **DIAMOND SHIELD** (optional) protects your paint finish on the lower front cap from paint chips and damage caused by road debris, bug acids and weathering with a clear, 8 mil. urethane film.



Vehicle shown in Silver Leaf Scheme 1 exterior graphics.

- ① **SIDE-SWING LUGGAGE DOORS** on selected compartments are new for 2008. They open to the side, instead of up, making it easier to access your gear.
- ② **HIGH-MOUNTED TAILLIGHTS** are easy to see, even when you're towing another vehicle. Tailgaters be gone!
- ③ **DUAL AIR CONDITIONING UNITS** are mounted on top to improve cooling, and create more room for storage below.
- ④ **4-POINT ELECTRIC LEVELING SYSTEM** levels your coach automatically with the push of a button.



Vehicle shown in Silver Leaf Scheme 1 exterior graphics.



INTERLOCKING CEILING-TO-SIDEWALL CONSTRUCTION helps keep the box square. This assures a proper cabinet fit.



INTERLOCKING FLOOR-TO-SIDEWALL CONSTRUCTION locks tightly to keep out water, dust and noise, and helps eliminate squeaks and rattles.



VACU-BOND® SIDEWALL CONSTRUCTION creates a strong, weather-resistant structure. All sidewalls, floors and ceilings are Vacu-bonded to a durable metal frame, far superior to the pinch roll method our competitors often use.



EXPEDITION

THE MOST IMPORTANT FEATURE IN EXPEDITION: PEACE OF MIND.

Fleetwood engineers have designed dozens of safety features into Expedition. They've thought of everything from blind-spot cameras (optional) to help you change lanes safely, to the safety inspection checklist on the information center monitor. Combined with Fleetwood's superior construction, the result is a coach you can depend on for high quality and safety.

Safety



You've got precious cargo. So we've engineered dozens of innovative safety features into our motor homes to give you more peace of mind.

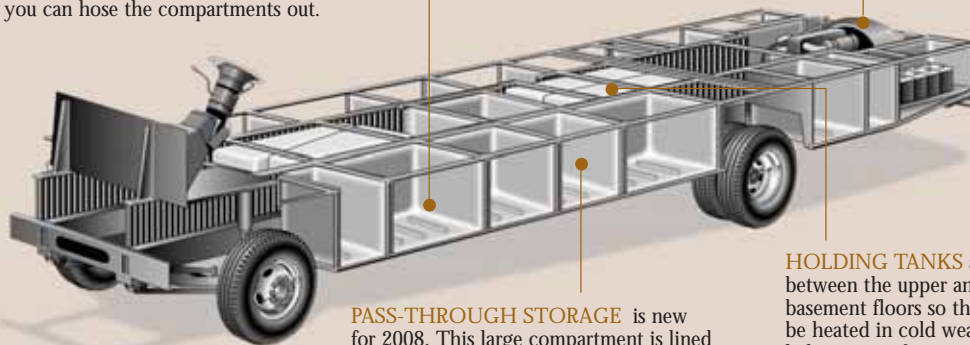


THE POWER PLATFORM®. BECAUSE YOU HAVE A LOT RIDING ON THIS.

Fleetwood's patented Power Platform® is as strong as they come. It begins with two ten-inch steel I-beams welded to the chassis, with steel outriggers extending outward. Together, they create a basement for the fluid tanks and storage, while supporting the floor, walls and roof with a rigid metal frame. The 2008 models feature pass-through storage along with the EZ Store Compartment to provide an abundant amount of storage.

BASEMENT STORAGE features aluminum doors, constructed of heavy-duty molded polyethylene so you can hose the compartments out.

LARGE TOWING CAPACITY† lets you tow most vehicles with ease.



PASS-THROUGH STORAGE is new for 2008. This large compartment is lined with heavy-duty polyethylene so you can hose it out easily.

HOLDING TANKS are enclosed between the upper and lower basement floors so they can be heated in cold weather to help prevent freezing.

† The chassis manufacturer recommends the installation of a supplemental brake control system to activate the brakes on the vehicle or trailer you are towing. Hitch receiver ratings expressed are maximum for the hitch receiver installed and may require the purchase of additional equipment that is dependent on the weight of the towed load. Consult with hitch receiver manufacturer for further information.

Drawings are for illustrative purposes only to highlight aspects of motor home construction. Actual motor home design depends on model and is subject to change.



THE EXTERIOR ENTERTAINMENT CENTER (optional) lets you enjoy the nice weather while you're watching the weatherman describe it. Includes a 19" Samsung® LCD HDTV that folds neatly out of the way, and an AM/FM radio with CD/DVD player.



THE UTILITY COMPARTMENT lets you empty out and clean up from one central location. You can dump the holding tanks, flush the black tank, and rinse everything clean with the water spray.



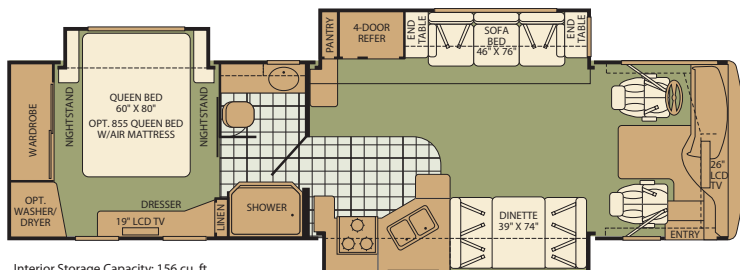
THE EZ STORE COMPARTMENT is a great place to store bigger gear. It's called EZ because the gas-lift strut supports keep the doors open so it's easy for you to get your stuff. And the compartment is easy to access, because it moves with the slide-out.



THE PASS THROUGH STORAGE is a great place for extra-long items like a pair of trekking poles, and you can take them out from either side.

EXPEDITION FLOOR PLANS

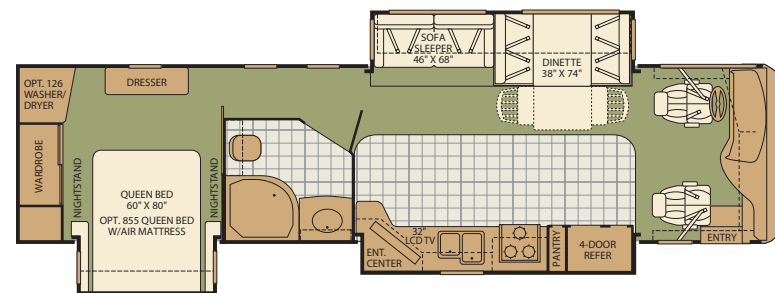
34H



Interior Storage Capacity: 156 cu. ft.
Exterior Storage Capacity: 115 cu. ft.

- Shorter diesel floor plan with triple slide-outs
- Full width bathroom with sliding doors for total privacy
- Available Options: 113, 126, 200, 497, 833, 873

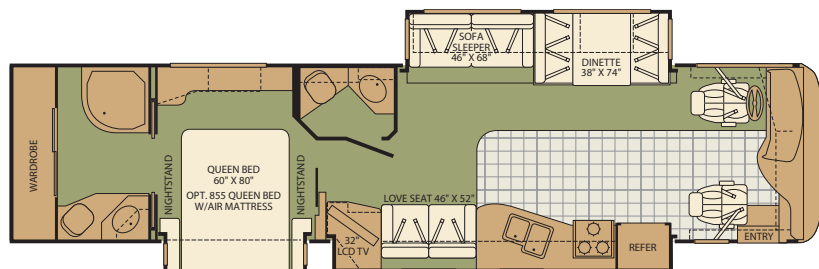
36D



Interior Storage Capacity: 164 cu. ft.
Exterior Storage Capacity: 126 cu. ft.

- Mid-coach home theater with 32" Samsung® LCD HDTV
- Side aisle layout for maximum bedroom privacy and bathroom space
- Available Options: 113, 126, 127, 497, 832, 833

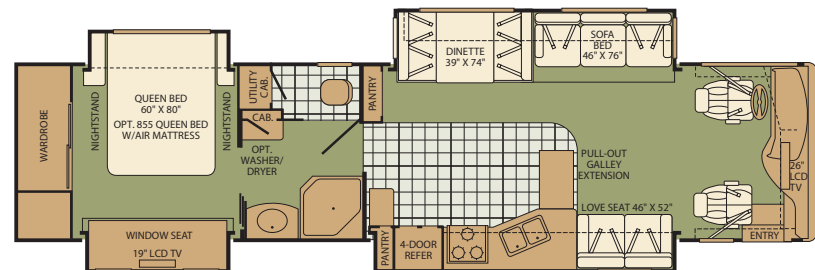
38F



Interior Storage Capacity: 170 cu. ft.
Exterior Storage Capacity: 167 cu. ft.

- Mid-coach home theater with 32" Samsung® LCD HDTV
- Bath and a half layout with full-width rear en suite bathroom
- Available Options: 113, 127, 173, 497, 832, 833

38L



Interior Storage Capacity: 198 cu. ft.
Exterior Storage Capacity: 167 cu. ft.

- Opposing sofas for cozy entertaining
- Ultra comfy window seat in a separate second slide in the bedroom
- Available Options: 113, 126, 127, 173, 200, 357, 497, 821, 832, 833

OPTIONS



OPT. 113 3-BURNER RANGE W/OVEN

REFER

LOVE SEAT 46" X 52"

OPT. 173 ULTRALEATHER LOVE SEAT



OPT. 200 ULTRALEATHER SOFA SLEEPER W/AIR MATTRESS

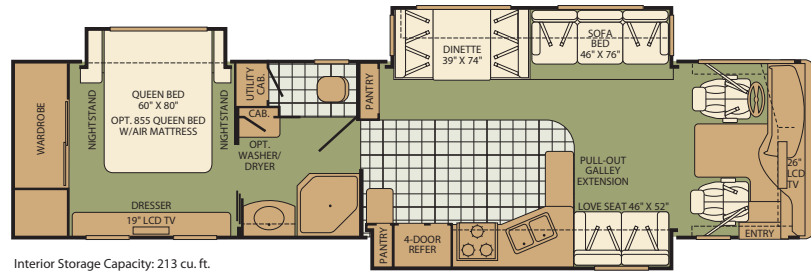
SOFA SLEEPER 59" X 71"

OPT. 201 ULTRALEATHER SOFA SLEEPER W/AIR MATTRESS



EXPEDITION

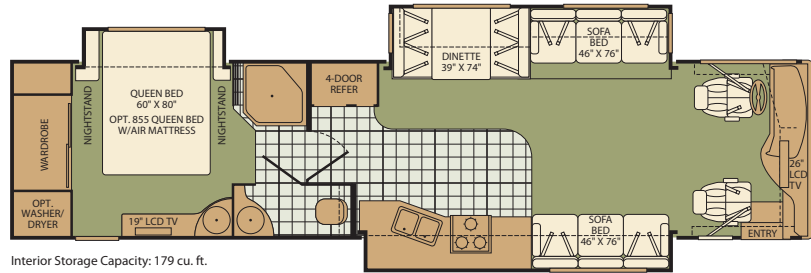
38N



Interior Storage Capacity: 213 cu. ft.
Exterior Storage Capacity: 167 cu. ft.

- Large galley with pull-out countertop extension
- 19" Samsung® LCD HDTV mounted across the foot of the bed for maximum viewing comfort
- Available Options: 113, 126, 127, 173, 200, 497, 821, 832, 833

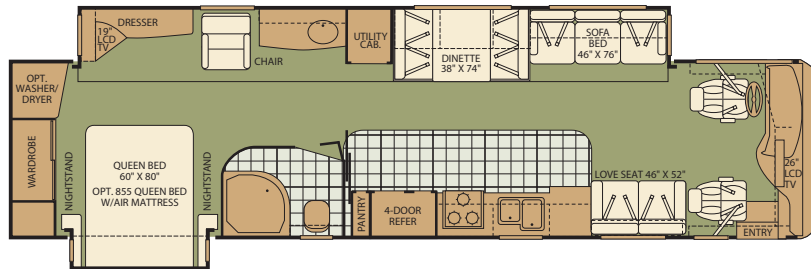
38S



Interior Storage Capacity: 179 cu. ft.
Exterior Storage Capacity: 167 cu. ft.

- Opposing slide-outs in the living/galley area create a very open residential feel
- Second sink in the bedroom suite
- Available Options: 113, 126, 127, 200, 497, 804, 832, 833

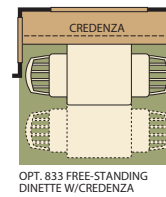
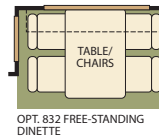
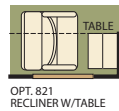
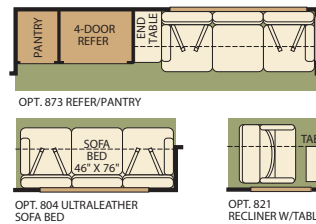
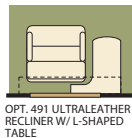
38V



Interior Storage Capacity: 186 cu. ft.
Exterior Storage Capacity: 199 cu. ft.

- Industry leading full-wall slide floor plan with second slide-out in the bedroom
- Bedroom dresser with multiple drawers for maximum storage flexibility
- Available Options: 113, 126, 127, 173, 200, 491, 497, 832, 833

Seatbelt configuration may vary depending on options chosen.



Service



Help is nearby. When you need an upgrade or repair, you'll find facilities all across North America and more than 1,000 dealers ready to assist you.

STANDARD FEATURES

INTERIOR Throughout

- 10 Gallon Quick Recovery Water Heater w/Direct Spark Ignition (Gas/Electric)
- 20,000/25,000 BTU Dual Furnaces
- 84" Interior Ceiling Height
- Ceiling Ducted Roof A/C
- Brushed Nickel Cabinet Hardware
- Complete TuffPEX Plumbing System
- Crown Molding
- Day/Night Pleated Shades
- Deluxe Roller Bearing, Full Extension Drawer Guides & Transit-Ship Locks
- Demand Water Pump w/Filter
- Dual Roof Mounted A/C High Efficiency w/Solar Panel & Chill Grille on Front A/C
- Hardwood Cabinet Doors/Drawers
- Large Overhead Cabinets w/Raised Panel Doors
- Plush Wall-to-Wall Carpet w/Carpet Pad
- Radius Corner Cabinetry
- Solar Battery Charger
- Solid Surface Countertops (Lavy & Galley)
- Vinyl Flooring at Entry
- Wall Switches (Includes Switches for Ceiling Lights & Vents)
- Water Heater Bypass
- Whole Coach Water Filtration System
- Window Coverings
- Wood Finish Return Air Intake for Furnace
- Woven Jacquard Feature Fabrics

Driver Convenience

- Adjustable 3 Point Seat Belts at Driver & Front Passenger Seats (with adjustable shoulder straps)
- AM/FM/CD Stereo, Sirius Satellite Radio® Ready
- Color Back-Up Monitor
- Auto A/C Heater Combo
- Auxiliary Start Circuit
- Battery Disconnect System
- CB Radio Ready
- Cruise Control
- Dash Fans
- Driver/Front Passenger Ultraleather™ Captain's Chairs w/Reclining Back/Slide Controls w/Power Driver Seat
- Multi-Function Sun Visor
- Passenger Armrest w/Integrated Magazine Rack
- Radio Switch Main/Auxiliary Power
- Soft Surface Automotive Dash w/Snack Tray & Convenient Service Door
- Tilt/Telescoping Steering Wheel

Galley

- 22" 3-Burner, High Output Cooktop
- Cabinet Toe Kicks
- Convection Microwave Oven
- Fan-Tastic® Power Roof Vent w/Wall Switch
- Large Double Sink
- Norcold® 12 cu.ft. Refrigerator
- Roll-Out Countertop (38N, 38L)
- Single Lever Faucet w/Pull Out Sprayer
- Soap Dispenser

- Solid Surface Countertop, Sink & Range Covers, Mirror Backsplash in Galley
- Under Galley Shelving & Wastebasket
- Vinyl Flooring
- Window Over Sink

Living Room

- Samsung® 26" LCD HDTV in Front Overhead
- Beveled Decor Mirrors
- Flexsteel® Residential Seat Styling
- Samsung® Home Theater Sound System
- Satellite Dish Ready
- TV Antenna w/Signal Booster
- Video Switch Box

Bedroom

- Samsung® 19" LCD HDTV
- Bedspread w/Decor Pillows
- Innerspring Mattress
- Rear Speakers
- Remote Generator Start
- Ventilated Rear Wardrobe w/Cedar Lining, Carpeted Floor & Wire Organizer

Bathroom

- A/C Venting
- Assist Handle
- Brushed Chrome Bath Accessories
- Cabinet Toe Kicks
- Fan-Tastic® Power Roof Vent w/Wall Switch
- Glass Shower w/Skylight and Low Threshold
- Make-Up Lights
- Porcelain Toilet w/Water Saver
- Vinyl Flooring

Safety/Convenience

- Carbon Monoxide Detector/Alarm
- Energy Management System (EMS) w/Soft Start
- Fire Extinguisher
- Propane Detector/Alarm
- RV System Monitor Panel
- Smoke Detector/Alarm
- Multiple Seatbelt Locations

EXTERIOR Throughout

- 120V/12V AC/DC Converter
- 120V/12V Wire Raceways
- 2000 Watt Pure Sine Wave Inverter w/Remote
- 4 Point Automatic Levelers
- 8.0 kW Onan® Quiet Diesel Generator
- 50 Amp Service
- Aerodynamic Bus Styling
- Awning Rail/Drip Molding (Both Sides)
- Choice of 4 Colorways in 2 Graphic Schemes
- Dual Pane Windows w/Screens
- Fiberglass Front & Rear Bumpers & Wheel Wells
- Fiberglass Front/Rear Caps w/High Mounted Taillights
- Full-Body Paint
- Patio & Entry Door Awning
- Patio Receptacles
- Remote/Heated Rear View Mirrors
- Water Pump Switch (Multiple Locations)

Automotive

- 10,000 lb. Weight Distributing Hitch Receiver w/7 Pin Electrical Hook-Up[†]
- 325HP Cummins® ISB 6.7L Engine
- Air Suspension
- Dual Fuel Fill (One on Each Side)
- Fog Lamps
- Freightliner® Chassis
- Halogen Headlamps
- Large One-Piece Bonded-in Windshield
- Mud Flaps
- Rear Vision Color Adjustable Camera
- Stainless Steel Wheel Simulators
- Single Motor Denso Windshield Wipers w/Wet Arm
- Tire Valve Extenders
- Underhood Utility Light
- Remote Keyless Entry

Safety/Convenience

- 20' Sewer Hose
- Central Electrical Panel
- Dual Battery Charge Control
- Four 6V/Deep Cycle House Batteries
- Park Cable Receptacle
- Porch Light (Doorside)
- Power Entry Step
- Radius Entry Door w/Deadbolt Latch (Keyless Entry Ready)
- Roof Ladder
- Side Opening, Engine Access Door
- Toilet Tank San-T-Flush™ System
- Utility Compartment w/Exterior Shower
- 4 Wheel ABS Brakes
- Automotive Safety Glass
- Daytime Running Lights

Storage

- Aluminum Luggage Door Seal Frames
- Central Utility Compartment
- Continuous One-Piece Compartment Bulb Seal
- EZ Store Compartment on Living Area Slide-Outs
- Pass Through Storage (Except 34H)
- Side Swinging Luggage Doors (Selected Areas)
- Gas Lift Strut Supports (Two Stage Under Slide Box)
- Hidden, Stainless Steel Latch Rods
- Insulated Aluminum Luggage Doors w/Single Paddle Metal Latches & Stainless Steel Hinges
- Lighted Luggage Compartments
- Rotomolded Polyethylene Luggage Compartments
- Spare Tire Compartment

Body Structure

- Aluminum Interlocking Floor/Wall/Ceiling Framing
- Heated Water & Holding Tank Compartments
- Paco Beam System
- Royal Tuff-Ply Radius Roof w/Ducted A/C
- Vacu-bond® Upper/Lower Floors

OPTIONS

INTERIOR - Throughout

- CSA Package (Canadian Specs)**
- Washer/Dryer
- Water Heater 16 Gallon Output

Driver Convenience

- Power Passenger Seat w/Footrest
- Power Driver/Front Passenger Sun Visors

Galley

- 22" 3-Burner, High Output Range w/Oven
- Free-Standing Table & Chairs
- Flip Down 10" LCD TV w/DVD Player

Living Room

- Free-Standing Swivel Recliner (38V)
- Recliner w/Table (38L & 38N)
- Sofa Sleeper w/Air Mattress (34H, 38L, 38N, 38S & 38V)
- Ultraleather™ Love Seat (38F, 38L, 38N & 38V)
- Ultraleather™ Sofa

Bedroom

- Adjustable Air Mattress

EXTERIOR - Throughout

- Window Awning Package
- Auto-Locating Satellite Dish
- Heat Pumps

Automotive

- Electric Awning
- Diamond Shield Clear Front Protective Mask

FLEETWOOD ADVANTAGES

- Full-Wall Slide (Patent Pending)
- 325HP Cummins® ISB 6.7L Engine
- Vacu-bond® Walls w/Smooth High Gloss Exterior Tuff-Coat® Fiberglass
- Power Platform® Construction (Fleetwood Exclusive)
- Large One-Piece Bonded-in Windshield
- Pass Through Storage
- Side Swinging Luggage Doors (Selected Areas)
- Samsung® 26" LCD HDTV in Living Room, Samsung® 19" LCD HDTV in Bedroom
- Deluxe Roller Bearing, Full Extension Drawer Guides
- 84" Interior Ceiling Height

**CSA standards may require substitution or deletion to achieve conformance.

WEIGHTS AND MEASUREMENTS

FREIGHTLINER® CHASSIS

MODELS	34H	36D	38F	38L	38N	38S	38V
Engine Displacement (Liters)	6.7	6.7	6.7	6.7	6.7	6.7	6.7
Wheelbase (Inches)	208"	228"	252"	252"	252"	252"	252"
GVWR (lbs) ¹	31,000	31,000	31,000	31,000	31,000	31,000	31,000
Front GAWR (lbs) ²	12,000	12,000	12,000	12,000	12,000	12,000	12,000
Rear GAWR (lbs) ²	19,000	19,000	19,000	19,000	19,000	19,000	19,000
GCWR (lbs) ³	41,000	41,000	41,000	41,000	41,000	41,000	41,000
Hitch Rating Weight (lbs) ¹	10,000	10,000	10,000	10,000	10,000	10,000	10,000
Tongue Weight (lbs) ¹	1,000	1,000	1,000	1,000	1,000	1,000	1,000
Fuel Capacity (gal)	90	90	90	90	90	90	90

DIMENSIONS & CAPACITIES

MODELS	34H	36D	38F	38L	38N	38S	38V
Overall Length ⁴	34' 8"	36' 4"	38' 4"	38' 4"	38' 4"	38' 4"	38' 4"
Overall Height (with A/C)	12' 8"	12' 8"	12' 8"	12' 8"	12' 8"	12' 8"	12' 8"
Overall Width (maximum) ^{5,6}	102"	102"	102"	102"	102"	102"	102"
Interior Height (maximum)	84"	84"	84"	84"	84"	84"	84"
Interior Width (maximum)	96"	96"	96"	96"	96"	96"	96"
Fresh Water Holding Tank (gal)	86	86	86	86	86	86	86
Grey Water Holding Tank (gal)	50	50	50	50	50	50	50
Black Water Holding Tank (gal)	50	50	50	50	50	50	50
Appliance Propane Tank (gal) (WC) ⁷	24.4	25	25	25	25	25	25
Water Heater Tank (gal)	10	10	10	10	10	10	10

Liquid Weight Reference: Water (gal) = (8.3 lbs/3.8kgs) Fuel (gal) = 7.1 lbs/3.2 kgs) Propane (gal) = (4.2 lbs/1.9 kgs)

Metric Conversion: Multiply pounds x 0.453 to obtain kilograms. Multiply gallons x 3.785 to obtain liters. Multiply liters x 61 to obtain cubic inches.

CHASSIS

Model: Freightliner® XC-Series

Engine: Cummins® ISBXT 6.7L

Torque: 750 lb-ft @ 2400 RPM

Alternator: 170 Amp Leece Neville®

Transmission: Allison® 3000 MH 6-Speed w/Electronic Shifter

Horsepower: 325HP

Warranty



Exclusive RV ownercare warranty.
See your Fleetwood dealer for details.

EXPEDITION

CLASS A DIESEL

1. GVWR (Gross Vehicle Weight Rating) is the maximum permissible weight of this fully loaded motor home. The GVWR is equal to or greater than the sum of the (UVW) unloaded vehicle weight plus the (CCC) cargo carrying capacity*.

2. GAWR (Gross Axle Weight Rating) is the maximum permissible loaded weight a specific axle is designed to carry.

3. GCWR (Gross Combined Weight Rating) is the value specified by the motor home manufacturer as the maximum allowable loaded weight of this motor home with its towed vehicle. Towing and braking capacities may be different. Refer to Fleetwood and chassis manufacturer's manuals for complete information.

4. Length measured from front bumper to rear bumper (excludes accessories).

5. Excludes safety equipment and awnings.

6. Motor homes feature a body-width over 96" which will restrict your access to certain roads. Before purchasing, you should research any state and/or province road laws which may affect your usage.

7. Tank manufacturer's listed water capacity (WC). Actual propane capacity is 80% of water listing as required by the safety code.

† The chassis manufacturer recommends the installation of a supplemental brake control system to activate the brakes on the vehicle or trailer you are towing. Hitch receiver ratings expressed are maximum for the hitch receiver installed and may require the purchase of additional equipment that is dependent on the weight of the towed load. Consult with hitch receiver manufacturer for further information.

N/A = Not available at time of printing.

*UVW and CCC are found on the cargo carrying capacity label in each RV.

IMPORTANT— PLEASE READ: Product information, photography and illustrations included in this publication were as accurate as possible at the time of printing. For further product information and changes, please visit our website at www.fleetwoodrv.com or contact your local Fleetwood dealer. Prices, materials, design and specifications are subject to change without notice. All weights, fuel, liquid capacities and dimensions are approximate. Fleetwood has designed its recreational vehicles to provide a variety of uses for its customers. Each vehicle features optimal seating, sleeping, storage and fluid capacities. The user is responsible for selecting the proper combination of loads (i.e. occupants, equipment, fluids, cargo, etc.) to ensure that the vehicle's capacities are not exceeded.

EXPEDITION

CLASS A DIESEL

RV OWNERCARE*

Limited one-year/15,000-mile coach warranty and three-year/50,000-mile structural warranty, whichever occurs first, and it is fully transferable for the first 12 months. RV OWNERCARE is one of the RV industry's most comprehensive programs and includes systems, appliances, components and construction, with no deductible and no service charge. RV OWNERCARE coverage is provided from a company that will be around in the future to service your needs. See your nearest Fleetwood dealer for a full explanation of benefits and restrictions.

CONTACT US

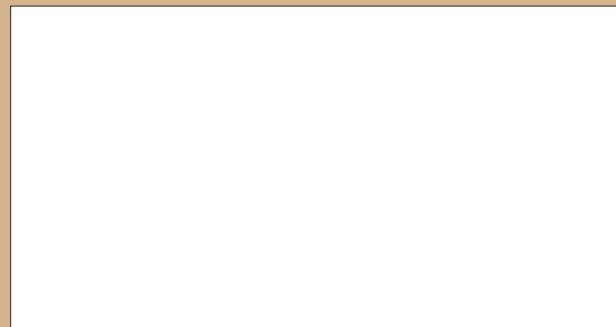
To locate a dealer near you, visit our website at www.fleetwoodrv.com or call 1-800-444-4905. We can also be contacted at Fleetwood Customer Relations, P.O. Box 1007, Decatur, IN 46733.

FLEETWOOD TRAVELCADE CLUB

As a Fleetwood owner, you're eligible to become a member of the Fleetwood Travelcade Club. It's a perfect way to meet other Fleetwood owners who love to travel across America and share in the RV lifestyle. Call (877) 577-2560, or visit our website at www.fleetwoodrv.com/owners_clubs to learn more, and join the fun.



YOUR LOCAL FLEETWOOD DEALER IS:



*For complete info see your Fleetwood dealer.

©2007. Fleetwood Enterprises, Inc.
Printed in the USA. Inventory Control Number EXP08B2, 11/07.
Model Year 2008, Second Edition.

IMPORTANT—PLEASE READ

Product information, photography and illustrations included in this publication were as accurate as possible at the time of printing. For further product information and changes, please visit our website at www.fleetwoodrv.com or contact your local Fleetwood dealer. Prices, materials, design and specifications are subject to change without notice. All weights, fuel, liquid capacities and dimensions are approximate. Fleetwood has designed its recreational vehicles to provide a variety of uses for customers. Each vehicle features optimal seating, sleeping, storage and fluid capacities. The user is responsible for selecting the proper combination of loads (i.e. occupants, equipment, fluids, cargo, etc.) to ensure that the vehicles capacities are not exceeded.

WHY FLEETWOOD?



Quality

There's no cutting corners. Skilled craftsmen build every Fleetwood RV for maximum durability and longevity.



Trust

More people trust Fleetwood. After all, we've spent over 50 years perfecting RVs, earning the loyalty of generations of RVers.



Passion

We're truly passionate about the RV lifestyle. Fleetwood was founded by RV enthusiasts, and that tradition continues today.



Safety

You've got precious cargo. So we've engineered dozens of innovative safety features into our motor homes to give you more peace of mind.



Service

Help is nearby. When you need an upgrade or repair, you'll find facilities all across North America and more than 1,100 dealers ready to assist you.



Warranty

Exclusive RV ownercare warranty. See your Fleetwood dealer for details.

