

GULF STREAM



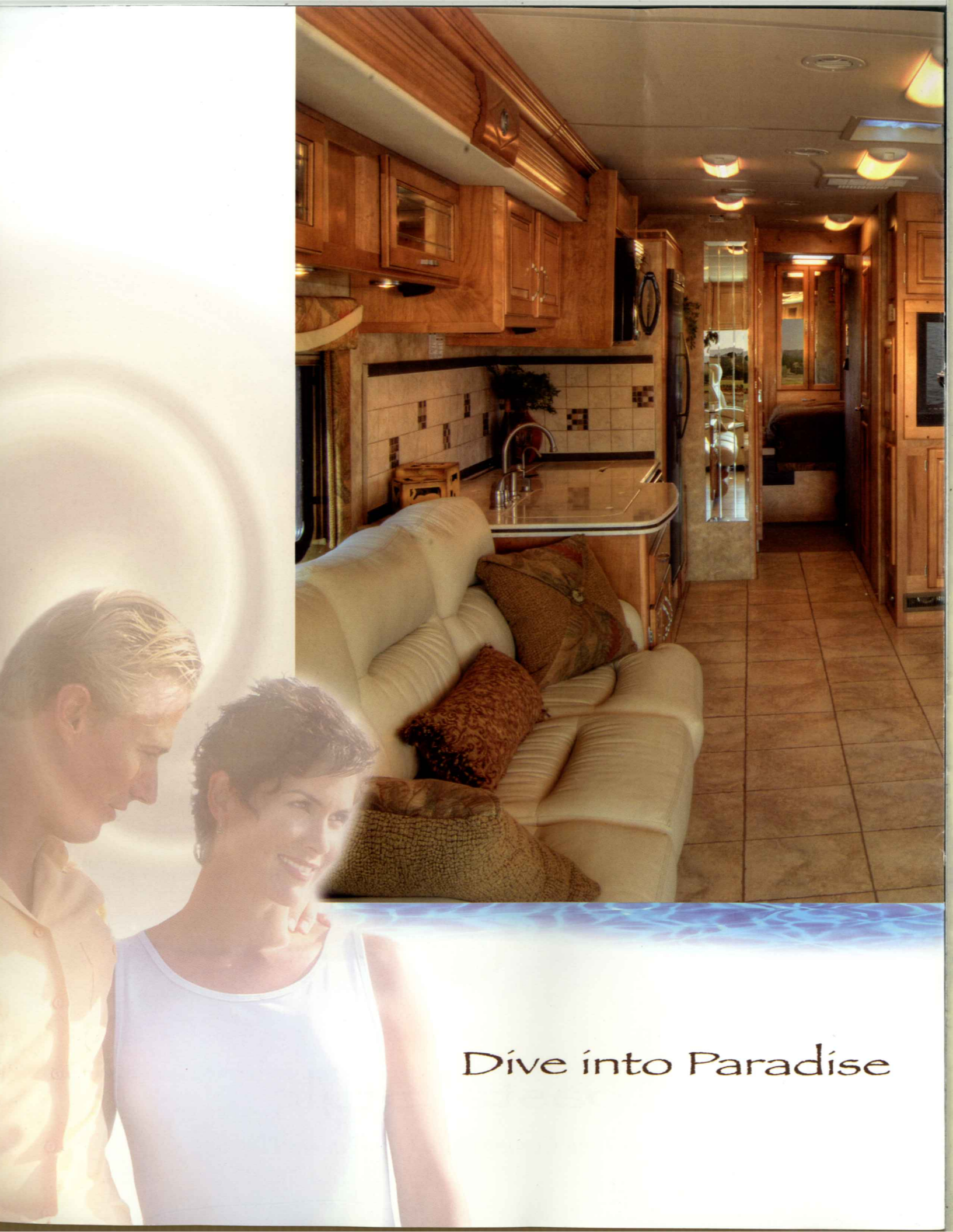
CARIBBEAN

2009



Coastal Style

Your Quality Time Comes From Our Quality Planning



Dive into Paradise



Owning a Caribbean is like experiencing a piece of paradise. Take the plunge, and you'll never look back. This streamlined coach is so very pleasing to the eye; easy style that flatters you. A neutral interior theme with tropical overtures lends to your sunny mindset.

From seascapes to mountain views and everything that's green in between, The Gulf Stream touch lifts you above and beyond.

CARIBBEAN

Food, family, and friends come together in this winning kitchen and dining area featuring well-loved wood cabinetry of maple, spotless countertops of Corian, a functional dinette, and welcomed 32" LCD TV. No need to dine out or carry in; prep time is pleasant and efficient for all your meals and snacks.





Relax & Rejuvenate

Everyone knows the Caribbean stands for R&R. The master suite makes this apparent with stylish appointments that make rejuvenating comfortable and easy. There is space to unwind, exhale, and drift off at night and space to awaken, inhale, and dress in the morning. The Gulf Stream touch takes you away and brings you back.

GULF STREAM





And at the End of the Day...

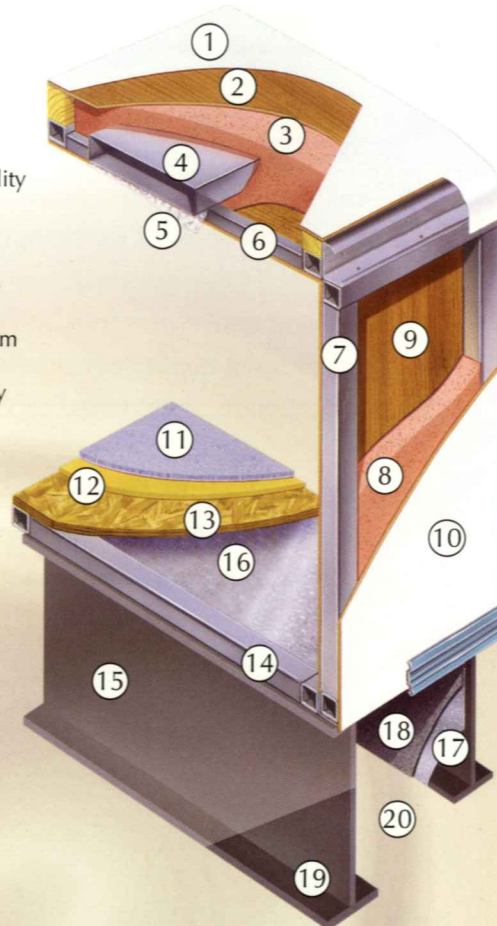
Caribbean stories are told.
Memories are born.
It's all a breeze in your Caribbean.

The Gulf Stream touch ensures
countless adventures ahead.



See the exceptional value of a Gulf Stream Coach Take Time to Compare

1. Laminated seamless fiberglass roof
2. Luan decking for additional strength
3. Molded high density EPS (Expanded Polystyrene) roof brick insulation - provides consistent insulation value as well as superior dimensional rigidity
4. One-piece formed aluminum air conditioning duct, surrounded by EPS insulation
5. Bubble-wrapped foil superior insulation helps prevent condensation
6. Rugged welded tubular aluminum roof framing
7. Rugged heavy-gauge tubular aluminum, fixture welded to form the sidewall framing
8. High-density EPS insulation provides superior lamination and bonding characteristics and insures greater energy efficiency
9. Interior wall panels securely laminated to sidewall fram
10. "Super Slick" fiberglass exterior vacuum-bond laminated to sidewall framing for lasting beauty and durability
11. High-quality stain-resistant carpeting in designer coordinated colors
12. Extra-thick padding under carpet provides extra comfort and increases carpet durability
13. Seamless structure wood floor decking laminated to steel floor structure assures a quiet, long-lasting rigid floor
14. Heavy-gauge tubular steel framing, fixture welded for extra strength and stability
15. Heavy-gauge steel I-beam floor truss system - the strongest foundation in the industry
16. Seamless layer of galvanized steel securely attached to the steel floor framing
17. Galvanized steel used to form each storage & holding compartment
18. Durable all-weather carpeting completes each accessible storage compartment, providing extra protection for luggage and valuables
19. Rust-prohibitive paint coating applied to all steel framing assures corrosion and rust protection
20. The industry's strongest, most spacious exterior storage compartments



The Cradle of Strength

Super Strength Truss System is unmatched in the RV industry. The structural subfloor foundation begins by welding a network of integrated steel trusses to the chassis rail. Specifically designed to distribute and transfer the tremendous forces from the coach to the chassis rail, these trusses are individually tested to withstand 6,000 pounds each.

An all steel overhead structure installed above the cockpit brings strength and rigidity to the upper portion of the coach providing a safe/strong platform to install a TV that will not break free in an impact while maximizing overhead storage.

Caribbean 35A

Length	38'	Water Heater	10 gal.
Height W/AC	12' 3"	LP Gas Tank	115 lbs.
Width	100"	Furnace BTU's	40,000/25,000
Interior Height	84"	Chassis	Freightliner
Interior Width	96"	Engine	340 Cummins
Fresh Water	70 gal.	Fuel	100 gal.
Grey Water	75 gal.	Wheel Base	228"
Black Water	75 gal.	GVWR	28,000

Caribbean 38C

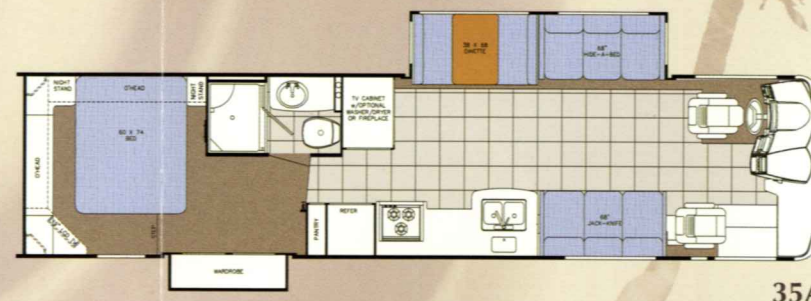
Length	39' 11"	Water Heater	10 gal.
Height W/AC	12'-3"	LP Gas Tank	115 lbs.
Width	100"	Furnace BTU's	40,000/25,000
Interior Height	84"	Chassis	Freightliner
Interior Width	96"	Engine	350 Cummins
Fresh Water	90 gal.	Fuel	100 gal.
Grey Water	75 gal.	Wheel Base	252"
Black Water	75 gal.	GVWR	30,500

CARIBBEAN

Choices Standards

St Thomas

Key West



35A



38C

CHASSIS

- 30,500 GVWR, 350 HP Cummins Freightliner - 38C
- 28,000 GVWR, 340 HP Cummins Freightliner ISB Allison, 6 Speed, Rear Radiator - 35A

EXTERIOR

- Vinyl Warp Awning
- Pre-molded Front/Rear Fiberglass Caps
- Laminated Fiberglass Roof
- Slick Fiberglass Exterior w/ Graphics

DÉCOR

- Mirrored Medicine Cabinet
- Privacy Curtain
- Corian Kitchen Countertop
- Pleated Shades
- Metal Mini Blind Kitchen
- Decorative Crown Ceiling Molding
- Ginger Glazed Maple Hardwood

HEATING & COOLING

- Dash A/C
- (1) 40,000 BTU
- & (1) 25,000 BTU Furnaces
- 13,500 BTU Ducted Roof A/C
- Adt. 13,500 BTU Ducted Roof A/C

MISCELLANEOUS

- Heated Holding Tanks
- Exterior Sideview Mirrors
- Stainless Steel Wheel Inserts
- Jack Leveling System
- 10,000 lb. Hitch
- Interior S.S. Entry Assist Handle
- Carpeted Storage Bins
- Mud Flaps (Front & Rear)
- Fire Extinguisher
- Slide Out Toppers
- Rally Hook Up
- Hose Faucet
- Telephone Hook Up
- Cable TV Hook Up
- Paper Towel Roll Dispenser
- Rear Ladder

POWER

- (2) 12 Volt Aux. Batteries
- - 2000 Watt Inverter
- Battery Disconnect
- 50 AMP Converter
- Generator Ready

BATH

- Power Vent in Bathroom Area
- Sky Dome in Shower Area
- Shower w/ Glass Door & Surround
- Porcelain Stool w/ Sprayer
- Holding Tank Flush Kit

ELECTRICAL

- Overhead Defrost Blower
- Color Back-up Monitor w/ Audio
- Wall Switches for all Ceiling Lights
- AM/FM Cassette Stereo w/ CD Player & Speakers
- Emergency Start Switch in Dash
- Map Lights
- Antenna w/ Amplifier, Booster & 2 Jacks
- CB Antenna
- 1 Phone Jack in Kitchen
- & 1 in Bedroom
- Auto Double Electric Step
- 32" LCD TV on Feature Wall - 35A, 38C
- 37" LCD TV on Feature Wall
- DVD Ready
- DSS Prep (Tripod)
- Lighted Exterior Storage Bins

FURNISHINGS

- 2-Tone Copilot Seat
- 2-Tone Pilot Seat
- 60 x 74 Bed w/ Deluxe Innerspring Mattress - 35A
- 60 x 80 Bed w/ Deluxe Innerspring Mattress - 38C
- Leather Touch Sleeper (H-A-B) Sofa (DS)
- Comfort Plus Dinette Booth Bed
- 2 Throw Pillows (per Sofa)
- & 2 Bedroom Pillows
- 3-Point Seat Belts
- Leather Touch J-Knife Sofa (PS)

APPLIANCES

- Monitor Panel
- 30" OTR Convection Microwave
- 3-Burner Top
- Flush Stove Top Cover
- 10 Gal DSI Water Heater
- 115# LP Gas Bottle
- Carbon Monoxide Detector
- LP Gas Leak Detector
- Prep for Washer/Dryer
- Large 2-Way Refer w/ Icemaker & Purifier (RM2862IM)

Popular Options

VALUE PACKAGE

- Thermopane Windows
- Vinyl Ceiling
- Central Vac
- Fluorescent Lighting
- Power Awning
- Side Cameras

POWER

- 2000 WATT Inverter w/ Auto Start
- 8.0 ONAN Quiet Diesel Generator
- 7.5 Generac Quiet Diesel Generator
- 8.0 Power Tech Cat Generator

HEATING & COOLING

- 15,000 BTU Ducted A/C
- IPO 13,500 BTU A/C
- 3-Speed Fantastic Attic Fan

MISCELLANEOUS

- Power Sun Visor
- Heated & Remote Mirrors
- Surge Protection
- Ceramic Tile

ELECTRICAL

- 19" LCD Color TV in Bedroom
- Deluxe Air Horns # 2029GS
- Surround Sound System w/ DVD Player
- GPS Navigation System & MP3 Player
- KVH Satellite Dish

EXTERIOR

- Rear Rockguard

FURNISHINGS

- 2-Tone 6-Way Power Pilot Seat
- 2-Tone 6-Way Power Copilot Seat
- F/S Buffet Dinette w/ (2) Residential Dining Chairs IPO Booth Dinette
- 2 Folding Chairs

APPLIANCES

- Side by Side Refer w/ Icemaker & Purifier - 35A, 38C
- Combo Wash/Dryer w/ Outside Vent
- 12.3 Dometic Refrigerator

Destination Charge (Units shipped over 500 miles)
 .25/ per mile FOB Nappanee
 Engineering Fee for Deviation from STD Build

Features



Exclusive Benefits

Solid Hardwood Cabinetry

Gulf Stream residential style cabinets are constructed of solid hardwood doors and fronts that are pre drilled and screwed then stained and top coated with a furniture grade finish - providing long lasting beauty and durability as well as strength and quietness to your motorhome.

Other companies use wrapped cabinet fronts prone to peeling, fading and tearing. The softer composite wood used does not hold screws as well as hardwood resulting in loss of strength and squeaking. Discoloration will degrade the beauty and lower the value of your motorhome.

Galvanized Steel Storage Compartments

Seamless, carpeted, galvanized steel storage compartments safely cradle your valuables. Rust protective paint and foam sealed for extended life and a quiet ride.

High Efficiency H-Ducted Roof Air

Dual metal H-Ducted air-conditioning system with foil bubble wrapped insulation for superior climate control. Gulf Stream's roof air-conditioning system is a proven leader versus other brands' floor systems:

After 15 min. - 7 degrees cooler
After 30 min. - 9 degrees cooler
At 1 hour - remains 9 degrees cooler

Flush Floor Slide Out Rooms

True flush floor side out rooms to give you more headroom in the slide and eliminates the step up into the slide room that you will experience in many other brand motorhomes.

Comfort Plus Furniture

Gulf Stream's own Comfort Plus Furniture® features Leather Touch® residential styling, solid construction, total comfort and a comprehensive warranty.

Unlike traditional plywood and foam seating, Comfort Plus dinette seatings features the strength of steel and the comfort of a sprung cushion.

Seamless, Skid Resistant, Puncture Resistant, Fiberglass Roof

Excellent Weathering:

Maintaining the vehicle's quality appearance enhances its resale value.

Tear Resistance:

Flexroofs hard abuse resistant finish resists tearing, a condition that can cause leaks and lead to necessary and expensive repair.

Low Maintenance:

Road grime can easily be removed with normal cleaning maintenance. Rubber chalking due to solar breakdown of the roof surface is eliminated, preserving the original appearance and resale value of the vehicle.

Stain Resistance:

Fiberglass Flexroof is designed to resist staining and maintain its quality appearance.

Structural Integrity:

Unlike conventional EPDM rubber roof membranes, Flexroof is a structural component of the roof system.

Textured Fiberglass:

Helps dissipate heat and prevents tree limbs from tearing or scratching the roof.

24 Month 24,000 Mile, Warranty

Gulf Stream warranty on structural components. See the official written warranty for details.

Coach-Net® 24 Hour Emergency Roadside Assistance

Gulf Stream provides complimentary one-year membership to assist with towing and winching, flat tire change, mobile mechanic, delivery of emergency fluids, jump start/battery boost and lockouts.

Gulf Stream Gold Program & Gulfstreamers International Recreational Vehicle Club Memberships

See details on back page.

GULF STREAM



COACH, INCORPORATED

FAMILY VALUE

Gulf Stream Coach is a privately owned company with over 25 years of RV manufacturing experience.

RV dealers and consumers look to Gulf Stream for high-value products offering quality construction, innovative features, contemporary design, unmatched service, and continual support.

Gulf Stream offers the largest product line in the industry.

From entry level travel trailers to luxury motorhomes - all use the most advanced manufacturing techniques.

Your Quality Time Comes From Our Quality Planning

You're Family Now



The club magazine with up-to-date product information, service tips and company highlights. Members benefit from the Emergency Road Service and Gulf Streamers Insurance options. Both are available at competitive rates with friendly, reliable service. In addition, members save 10% at campgrounds throughout the U.S. and Canada-plus receive discounts at national theme parks and special attractions. Members are provided with RV and travel guides, directories and magazines.

Gulf Streamers spend quality time touring attractions, enjoy fabulous meals, take in area highlights and shows - all to make the most out of their RV experience. Go to www.GulfStreamRV.com and click RV Club for more information.

Learn More About Our Wide Range of Products at
www.GulfStreamRV.com



Post Office Box 1005

Nappanee, IN 46550

• Your Gulf Stream Coach Dealer •

For more information and available options, contact your local Gulf Stream Dealer, www.GulfStreamRV.com, or Gulf Stream Coach, Inc. Gulf Stream: Reserves the right to make changes in prices, colors, materials, components, and specifications and to discontinue models at any time without notice or obligation. Assumes no responsibility for any error in type or print reproduction of specifications or floorplans in this brochure. Photos may show equipment or items that are optional and are not included in the price of the coach. Test drive and review a current model at your nearest dealer. ©2009 Gulf Stream Coach, Inc. Nappanee, Indiana U.S.A.



Premium Customer Care

Over the centuries gold has been one of the most valuable and precious materials on earth. Gulf Stream feels the same way about its family of customers. We want our family to be out on the open

road enjoying our products knowing that they have a friend at Gulf Stream Coach. That's why we have implemented the Gulf Stream GOLD Premium Customer Care Program. The GOLD program gives you access to a specialized group of customer service representatives that can assist you with needs such as:

- Roadside Assistance
- Operating Features
- Service Center Locations
- RV Maintenance
- Product Questions

After the purchase of your new Gulf Stream motorhome, you will receive your GOLD card along with a letter welcoming you to the Gulf Stream Family. You will also receive a phone call asking you a few simple questions about your purchasing experience.



**Personalized
service,
personalized
attention.**

*That is our
GOLD promise
to you.*

**1-800-289-8787
for more
information**

