



2012 AMERICAN REVOLUTION



SET NEW LIMITS.

The American Revolution is so much more than a wildly luxurious coach. It's a bold sign of success, independence and innovative style. There's simply no other coach that can match its knock-out good looks, masterful technology and tactile opulence.



AMERICAN REVOLUTION 42T

Shown in Faded Linen interior décor with Satin Ebony Glaze Mahogany wood cabinetry



EXTERIOR GRAPHICS



CHAMPAGNE BERRY



GOLD STARFIRE



MIDNIGHT SUEDE



SILVER MERLOT



WHITE SHADOW

†Interior décors and/or woods may be subject to change. Printed fabric samples are representations of actual fabrics and may be limited due to standard printing technology.

INTERIOR DÉCOR

Even at a distance, American Coach motor homes make quite an impression. Inside and out, we've added handcrafted touches that demand attention and earn admiration. We've fussed over the finest details, from modern conveniences and sleek technology to exceptional fabrics and superior finishes. All you need to add is your own personal style. No matter where your journey takes you, you'll always travel first class†.

	LUXURIOUS GRAPHITE	GOLDEN SUEDE	FADED LINEN	SOLID WOOD CABINETRY
SOFA				
ACCENT				
BEDSPREAD				
COUNTERTOP				
FLOORING				
CARPET				

MAHOGANY SATIN
w/EBONY GLAZE

REGENCY CHERRY
w/EBONY GLAZE

ALMOND MOCHA GLAZE

STANDARD FEATURES & OPTIONS

STANDARD FEATURES

INTERIOR THROUGHOUT

- Automatic Generator Start System
- 84" Interior Ceiling Height
- PEX Plumbing System
- Manual Double Roller Blinds
- Deluxe Roller Bearing, Full-Extension Drawer Guides & Transit-Ship Locks
- (3) Roof-Mounted A/C High-Efficiency w/ Front Solar Panel and Quiet Design Ducting
- Hardwood Cabinet Doors/Drawers
- Padded Vinyl Ceiling
- Power Vent w/Rain Sensors (Galley, Bath & Shower Area)
- Raised-Panel Cabinet Doors
- Solid Wood Drawers
- Centralized Control Panel Display at Entry
- Tank Level Monitor (Interior Only)
- Central Vacuum System w/Accessory Kit
- Stacked Washer & Dryer

DRIVER CONVENIENCE

- Dual Monitors; Dash Stereo AM/FM, Single CD, MP3, Camera Monitor w/One-way Audio
- Integrated GPS Navigation System
- Rear-Vision System w/One-Way Audio (Camera & Monitor)
- Side-View Cameras
- Denso Climate Control System
- (2) Auxiliary 12V Dash Receptacles
- Adjustable Brake & Throttle Pedals
- Auxiliary Fog Lights
- Auxiliary Driving Lights
- Auxiliary Start Switch
- Battery Disconnect System
- Driver/Front Passenger Map Lights
- Villa® Ultraleather™ Driver Seat w/Manual Lumbar/6-Way Power/Heat/Adjustable Armrest (Integrated Lap & Shoulder Belts)
- Villa Ultraleather Passenger Seat w/6-Way Power/Electric Footrest (Integrated Lap & Shoulder Belts)
- I.C.C. Light Switch
- Electric Step Well Cover w/Lighted Step Well
- Soft Touch Smart Wheel
- Tilt & Telescoping Steering Wheel w/Adjustable Dash Gauge Package

GALLEY

- Base Cabinet Storage for the Range & Galley Sink Covers
- Ceramic & Decorative Glass Tile Backsplashes
- GE® Convection Microwave Oven w/Built-in Range Hood
- Polished Solid-Surface Dinette Table, with 2 Free-Standing Chairs & 2 Folding Chairs
- Faucet w/Pull-Out Sprayer

- Large 70/30 Split Solid-Surface Sink
- Residential Refrigerator
- Recessed Sealed Burners Cooktop (Stainless Steel, 3-Burner)
- Polished Solid-Surface Galley Countertop
- Polished Solid-Surface Range & Sink Covers

LIVING ROOM

- Sony® 32" LCD HDTV in Front Overhead
- Sony 40" LCD HDTV in Midship (Select Models)
- Sony Blu-ray® DVD Home Theater System w/5.1 Dolby® Surround Sound Speakers
- Villa® Ultraleather™ Sofa Bed
- Villa Ultraleather Sofa Sleeper w/Air Mattress
- Coffered Ceilings
- Dimmer-Switched/Halogen Ceiling Lights

BEDROOM

- Sony® Upscaling DVD Player
- Sony 32" LCD HDTV
- 60" X 80" Queen Bed Innerspring Mattress
- Cedar-Lined Wardrobe
- Manual Double Roller Blinds
- Satellite TV Receiver Ready (Coax Cable)
- Polished Solid-Surface Nightstand & Base Cabinet Countertops
- Dimmer-Switched Halogen Ceiling Lights

BATHROOM

- Deluxe Medicine Cabinet
- Hand-Held Shower Head
- Residential China Bowl Flush Toilet w/Hand Sprayer (Select Models)
- Polished Solid-Surface Lavy Top w/Porcelain Bowl & Residential Faucet
- Shower Door w/Obscure Glass
- Skylight in Shower
- Vacuum-Flushed Toilet (Select Models/Locations)

SAFETY/CONVENIENCE

- Multiple Seatbelt Locations
- Carbon Monoxide Detector/Alarm
- Centralized Control Panel Display Center
- Energy Management System (EMS)
- Fire Extinguisher
- Propane Detector/Alarm
- Smoke Detector/Alarm

EXTERIOR THROUGHOUT

- Large Pass-Through Compartments
- 4-Point Automatic Levelers
- (2) 2,000-Watt Pure Sine Wave Inverters w/Remote
- KVH® R5 In-Motion Domed Digital Satellite Antenna
- (8) 6-Volt House/Maintenance-Free AGM Batteries
- Rear Rock Guard w/Logo
- Diamond Shield Clear Front Protective Mask
- 50-Amp Service

- Electric Power Cord Reel
- "Bus Style" Large One-Piece Windshield
- Chrome "Bus Style" Heated Mirrors w/Remote Adjustment & Turn Signal Indicators
- Domed One-Piece Fiberglass Roof w/Radius Corners
- Holding Tanks San-T-Flush™ System
- Frameless Flush-Mount Windows
- Girard Patio Awning
- Electric Front Entry Door Awning
- Electronic Battery Control Center
- Energy Management System (50 Amp)
- Exterior Convenience Light at Dump Valves
- Fiberglass Front/Rear Caps w/High-Mounted Taillights
- Large Windshield Washer Bottle w/Sprayer Nozzles
- Multi-Point Water Pump Switching
- Onan® 8.0 kW Quiet Diesel Generator
- Power Generator Slide
- Sound Insulation Front & Rear
- Top-Mounted Intermittent Wipers
- Utility Light Front & Rear
- Variable Speed Water Pump
- Window Awnings (Bedroom & Front Roadside Windows)
- Sloped Roof on Slide-out Boxes
- Surge Guard RV Power Protection
- Waste Away Sewer Hose Manager
- Dupont Exterior Automotive Full-Body Paint w/Sand of Buff High-Gloss Finish

AUTOMOTIVE

- (2) 12V Chassis Batteries (1,000 Cold Cranking Amps Each Battery)
- 15,000 lb Weight Distributing Hitch Receiver w/7-Pin Electrical Hook-up
- 170-Amp Alternator
- Allison® 3000 MH, 6-Speed Automatic Trans.
- Anti-Lock Brake System (ABS)
- Full Air Brakes w/Automatic Slack Adjusters
- I-Beam Suspension w/Bilstein® Shocks
- Side Radiator Configuration
- Spartan® Modular Chassis w/450HP ISL Cummins® Engine
- Aluminum Wheels (6)
- Mud Flaps (4)

BODY STRUCTURE

- Aluminum Interlocking Floor/Wall/Ceiling Framing
- Heated Water & Holding Tank Compartments
- Liberty® Chassis (American Coach Exclusive)
- Steel Surface on Front Bulkhead/Engine Frame
- Vacu-bond® Insulated Storage Area
- Vacu-bond Sidewall, Roof & Floor Construction

SAFETY/CONVENIENCE

- (4) Turn Signal Lamps on Each Side of Coach

- 30" Front Entry Door w/Dead Bolt
- Front & Rear Docking Lights
- Illuminated Entry Assist Handle
- Porch Light
- Power Entry Step
- Automotive Safety Glass
- Daytime Running Lights

STORAGE

- Exterior Side Hinged Storage Doors
- Lighted Luggage Compartments
- Pass-Through Compartments

OPTIONS

INTERIOR

- Vented Combination Washer/Dryer
- Washer/Dryer Ready

LIVING ROOM

- Expandable L-Sofa (Select Models)
- Villa® Ultraleather™ Wrap-Around Dinette Ensemble
- Villa Ultraleather Sofa Sleeper w/Air Mattress - Passenger Side (Only w/ Dinette Ensemble on Select Models)

GALLEY

- Dometic® 14cf Side-by-Side Stainless Steel Refrigerator
- Recessed 3 Sealed Burner, Stainless Steel Range w/Oven & Solid-Surface Covers
- Fisher & Paykel DishDrawer®
- Electric Cooktop w/Dishwasher (all electric option) (42T, 42W) Deletes LPG
- Electric Cooktop (all electric option) Deletes LPG

BEDROOM

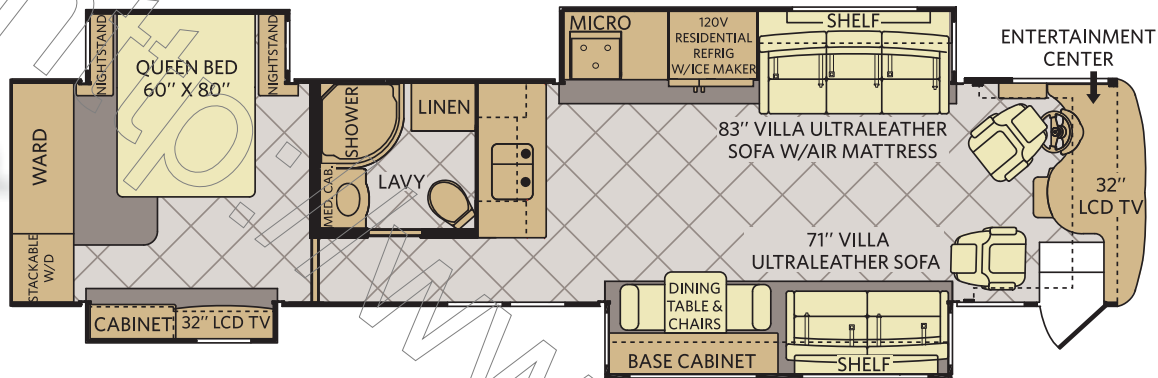
- Queen Bed with Memory Foam Mattress
- King Bed with Memory Foam Mattress
- Dual Control Queen Air Mattress
- Dual Control King Air Mattress

EXTERIOR

- (5) Exterior Graphics Packages (Girard Patio Awning Included in Graphic Package)
- Power Luggage Door Locks
- Tray Packages:
 - 1st Full Bay 54"/36"
 - 1st Full Bay 90"
 - 2nd Full Bay 54"/36"
 - 2nd Full Bay 90"
- Waste Management Pump
- Sidewall Exterior Entertainment Center (32" Sony® LCD / Sony® AM/FM/DVD Radio)

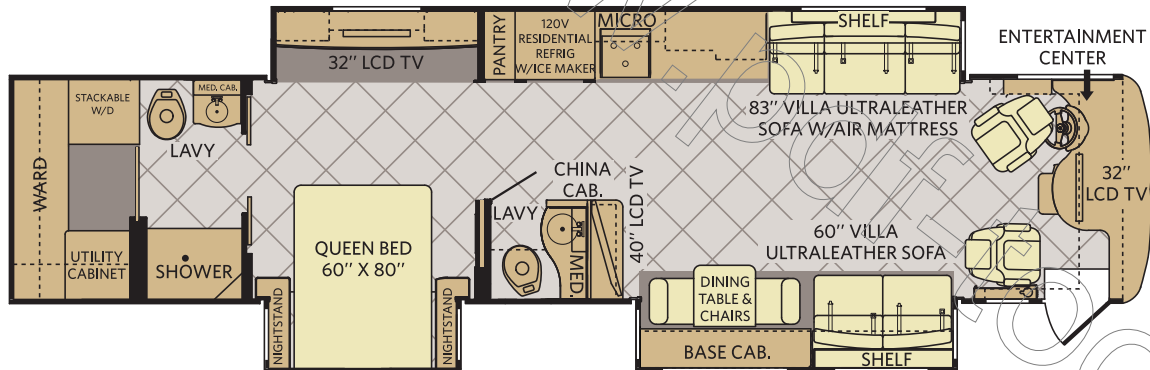
FLOOR PLANS

42Q



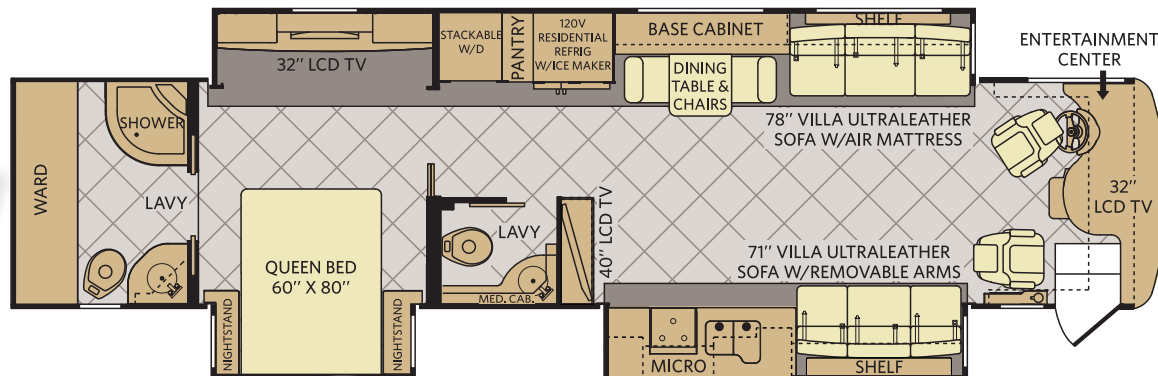
Available options: 107, 115, 124, 126, 127, 129, 191, 205, 828, 853, 854, 855, 856

42T



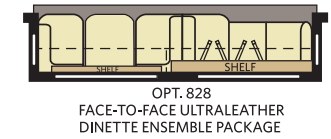
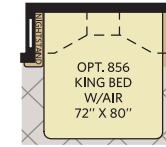
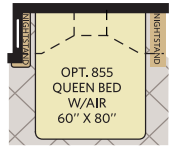
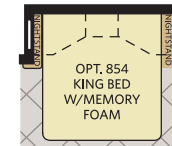
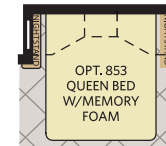
Available options: 107, 115, 124, 125, 126, 127, 129, 828, 853, 854, 855, 856

42W

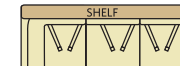


Available options: 107, 115, 124, 125, 126, 127, 129, 828, 853, 854, 855, 856

OPTIONS



OPT. 205
71" VILLA ULTRALEATHER
SOFA W/AIR MATTRESS



OPT. 191
SOFA-L TRANSFORMER
83" X 70" ULTRALEATHER



OPT. 129
WASHER/DRYER READY



OPT. 127
DOMETIC
14" CU. FT.
REFER



OPT. 126
WASHER/DRYER COMBO



OPT. 125
ELECTRIC COOKTOP/
DISHWASHER



OPT. 124
ELECTRIC
COOKTOP



OPT. 115
3 BURNER
RANGE &
22" OVEN



OPT. 107
DISHWASHER

Seatbelt configuration may vary depending on options chosen.



WEIGHTS & MEASUREMENTS

WEIGHTS

MODELS	42Q	42T	42W
Engine Displacement (liters)	8.9	8.9	8.9
Wheelbase (inches)	302"	302"	302"
GVWR (lbs) ¹	44,600	44,600	44,600
Front GAWR (lbs) ²	14,600	14,600	14,600
Rear GAWR (lbs) ²	20,000	20,000	20,000
Tag Axle (lbs) ²	10,000	10,000	10,000
GCWR (lbs) ³	59,600	59,600	59,600
Hitch Rating Weight (lbs) [†]	15,000	15,000	15,000
Tongue Weight (lbs) [†]	1,500	1,500	1,500
Fuel Capacity (gal)	150	150	150

CHASSIS — LIBERTY®

Model: Spartan®

Engine: Cummins® 8.9L ISL w/2-Stage Engine Brake

Transmission: Allison® 3000 MH, 6-Speed w/Electronic Shifter

Alternator: 170 Amp Leece-Neville

Torque: 1,250 lb-ft @ 1,300 RPM

Horsepower: 450HP

Front Tires: Michelin® 305/70R 22.5H

Rear Tires: Michelin® 295/80R 22.5H

DIMENSIONS & CAPACITIES

MODELS	42Q	42T	42W
Overall Length ⁴	42' 11.5"	42' 11.5"	42' 11.5"
Overall Height (with A/C)	12' 11.75"	12' 11.75"	12' 11.75"
Overall Width (maximum) ^{5, 6}	102"	102"	102"
Interior Height (maximum)	84"	84"	84"
Interior Width (maximum)	96"	96"	96"
Fresh Water Holding Tank (gal)	100	100	100
Grey Water Holding Tank (gal)	60	60	60
Black Water Holding Tank (gal)	40	40	40
Appliance Propane Tank (gal) (WC) ⁷	28.2	28.2	28.2

Liquid Weight Reference:

Water (gal) = (8.3 lbs/3.8 kgs) Fuel (gal) = (6.1 lbs/2.8 kgs) Propane (gal) = (4.2 lbs/1.9 kgs)

Metric Conversion:

Multiply pounds x 0.453 to obtain kilograms. Multiply gallons x 3.785 to obtain liters.

Multiply liters x 61 to obtain cubic inches.

- GVWR (Gross Vehicle Weight Rating) is the maximum permissible weight of this fully loaded motor home. The GVWR is equal to or greater than the sum of the (UVW) unloaded vehicle weight plus the (OCCC) occupant cargo-carrying capacity.*
- GAWR (Gross Axle Weight Rating) is the maximum permissible loaded weight a specific axle is designed to carry.
- GCWR (Gross Combined Weight Rating) is the value specified by the motor home manufacturer as the maximum allowable loaded weight of this motor home with its towed vehicle. Towing and braking capacities may be different. Refer to American Coach and chassis manufacturer's manuals for complete information.
- Length measured from front bumper to rear bumper (excludes accessories).
- Excludes safety equipment and awnings.
- Motor homes feature a body width over 96" which will restrict your access to certain roads. Before purchasing, you should research any state and/or province road laws which may affect your usage.
- Tank manufacturer's listed water capacity (WC). Actual propane capacity is 80% of water listing as required by the safety code.

† The chassis manufacturer recommends the installation of a supplemental brake control system to activate the brakes on the vehicle or trailer you are towing. Hitch receiver ratings expressed are maximum for the hitch receiver installed and may require the purchase of additional equipment that is dependent on the weight of the towed load. Consult with hitch receiver manufacturer for further information.

* UVW and OCCC are found on the label containing the federal certification tag in each RV.

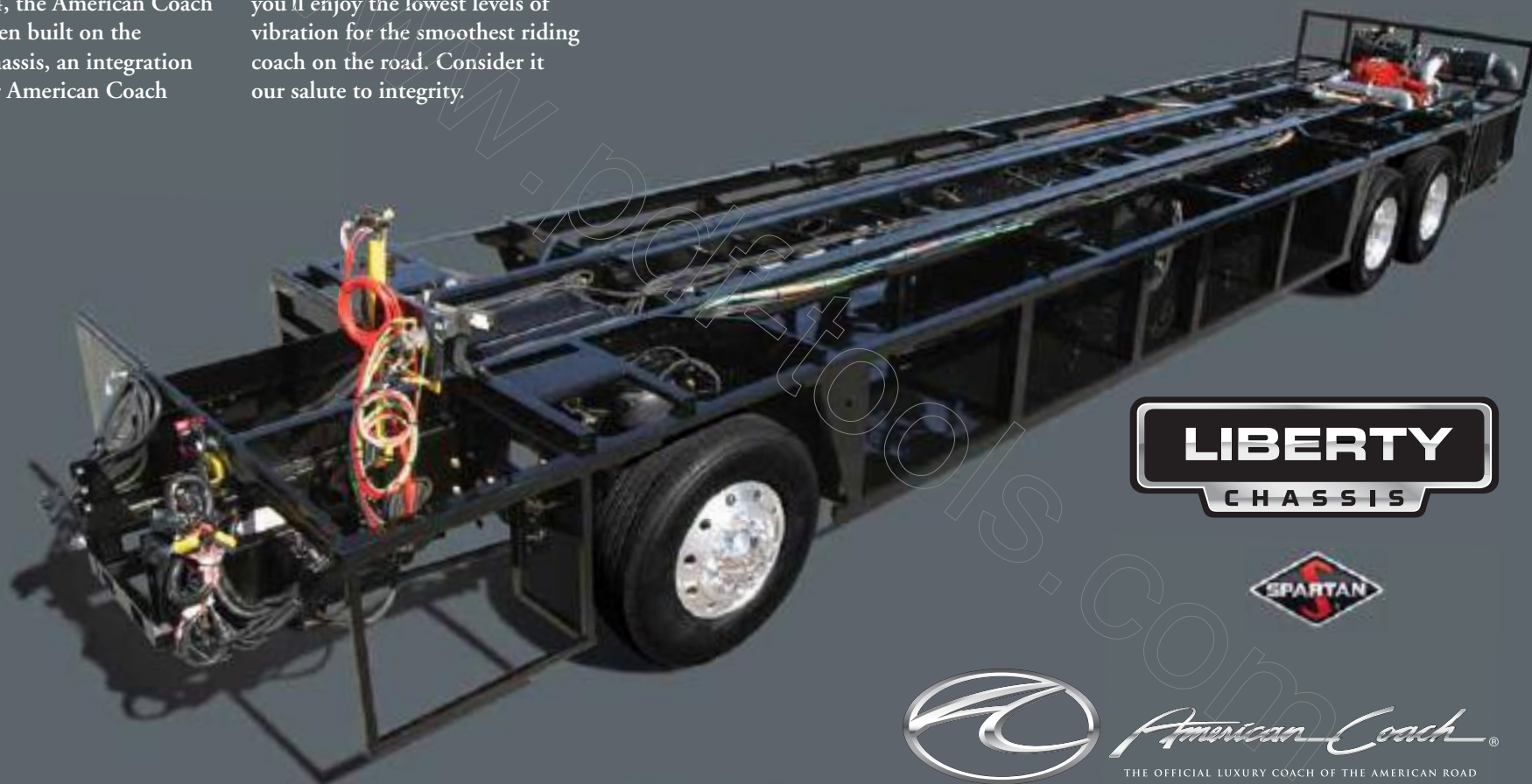
IMPORTANT—PLEASE READ: Product information, photography and illustrations included in this publication were as accurate as possible at the time of printing. For further product information and changes, please visit our website at www.AmericanCoach.com or contact your local American Coach dealer. Prices, materials, design and specifications are subject to change without notice.

All weights, fuel, liquid capacities and dimensions are approximate. American Coach has designed its recreational vehicles to provide a variety of uses for customers. Each vehicle features optimal seating, sleeping, storage and fluid capacities. The user is responsible for selecting the proper combination of loads (i.e., occupants, equipment, fluids, cargo, etc.) to ensure that the vehicle's capacities are not exceeded.

THE LIBERTY CHASSIS

Technology this groundbreaking requires an expert team. That's why American Coach and Spartan decided to join forces—to create a rugged, modular chassis system for an incomparable driving experience. Since 2004, the American Coach line has been built on the Liberty Chassis, an integration of superior American Coach

framing technology and the Spartan Chassis modular system, providing the strength and structure for a ride unrivaled in the luxury coach industry. So even coupled with a high-performance diesel engine, you'll enjoy the lowest levels of vibration for the smoothest riding coach on the road. Consider it our salute to integrity.



LIBERTY
CHASSIS



American Coach®

THE OFFICIAL LUXURY COACH OF THE AMERICAN ROAD

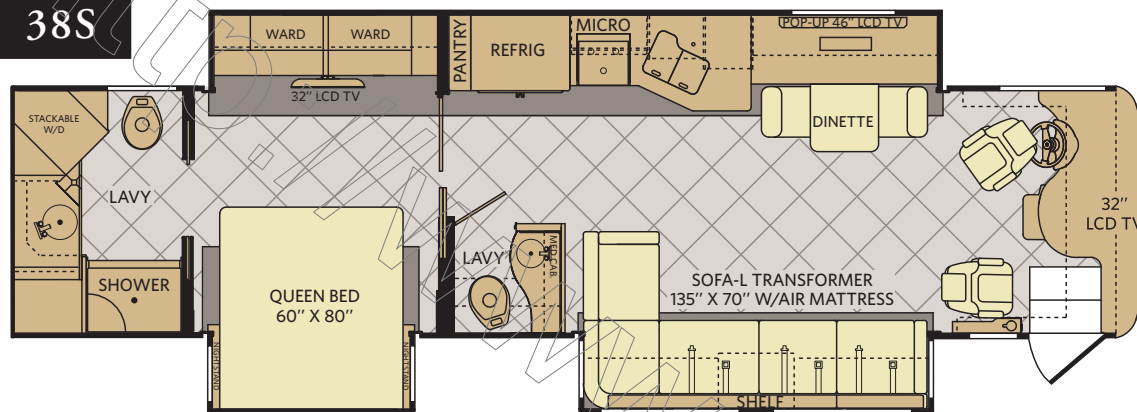
For more information, visit us at www.AmericanCoach.com or call us at 800.854.1344

©2011. Fleetwood RV, Inc. Printed in the USA. Inventory Control Number AR12B1, 09/11. Model Year 2012, First Edition.

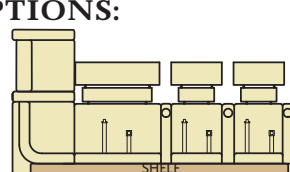
AMERICAN REVOLUTION®



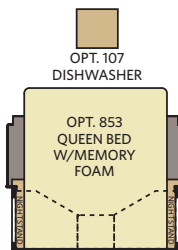
38S



OPTIONS:

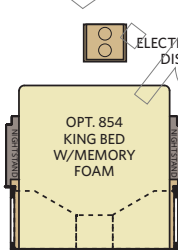


OPT. 193
136" X 70" VILLA ULTRALEATHER
TRANSFORMER SOFA WITH INLINERS
& POWER FOOTRESTS



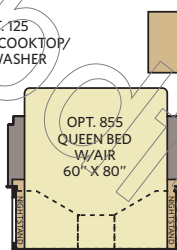
OPT. 107
DISHWASHER

OPT. 853
QUEEN BED
W/MEMORY
FOAM

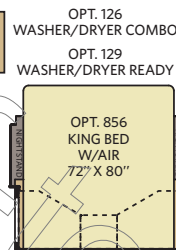


OPT. 125
ELECTRIC COOKTOP/
DISHWASHER

OPT. 854
KING BED
W/MEMORY
FOAM



OPT. 855
QUEEN BED
W/AIR
60" X 80"



OPT. 856
KING BED
W/AIR
72" X 80"

OPT. 126
WASHER/DRYER COMBO
OPT. 129
WASHER/DRYER READY

FLOOR PLAN FEATURES:

- Quiet Air Conditioning System
- Dual Dash Monitors
- Sony® Blu-ray® Surround Sound System
- All Electric/No LP
- Powered Front Privacy Blinds
- Power Generator Slide
- Villa® Ultraleather Furniture
- Frameless Windows
- 46" Sony® Pop-Up TV
- Slide-out Mounted Girard Awning
- Aqua-Hot® Heating System
- Residential Refrigerator
- Full & Half Bath



WEIGHTS & MEASUREMENTS

CHASSIS LIBERTY® 400

MODELS	38S
Engine Displacement (liters)	8.9
Wheelbase (inches)	254"
GVWR (lbs) ¹	34,700
Front GAWR (lbs) ²	14,700
Rear GAWR (lbs) ²	20,000
GCWR (lbs) ³	44,700
Hitch Rating Weight (lbs) [†]	7,500
Fuel Capacity (gal)	100

LIBERTY CHASSIS

Engine: Cummins® 8.9L ISL
VGT Engine Brake
Transmission: Allison® 3000 MH,
6-Speed w/Electronic Shifter

Alternator: 170 Amp Leece-Neville
Horsepower: 400HP
Torque: 1,250 lb-ft @ 1,300 RPM
Front Tires: Michelin® 305/70R 22.5H
Rear Tires: Michelin® 295/80R 22.5H

DIMENSIONS & CAPACITIES

MODELS	38S
Overall Length ⁴	38' 11.5"
Overall Height (with A/C)	12' 11.75"
Overall Width (maximum) ^{5,6}	102"
Interior Height (maximum)	84"
Interior Width (maximum)	96"
Fresh Water Holding Tank (gal)	100
Grey Water Holding Tank (gal)	60
Black Water Holding Tank (gal)	40

Addendums

1. GVWR (Gross Vehicle Weight Rating) is the maximum permissible weight of this fully loaded motor home. The GVWR is equal to or greater than the sum of the (UVW) unloaded vehicle weight plus the (OCCC) occupant cargo-carrying capacity.
2. GAWR (Gross Axle Weight Rating) is the maximum permissible loaded weight a specific axle is designed to carry.
3. GCWR (Gross Combined Weight Rating) is the value specified by the motor home manufacturer as the maximum allowable loaded weight of this motor home with its towed vehicle. Towing and braking capacities may be different. Refer to Fleetwood and chassis manufacturer's manuals for complete information.
4. Length measured from front bumper to rear bumper (excludes accessories).
5. Excludes safety equipment and awnings.

6. Motor homes feature a body width over 96" which will restrict your access to certain roads. Before purchasing, you should research any state and/or province road laws which may affect your usage.
7. Tank manufacturer's listed water capacity (WC). Actual propane capacity is 80% of water listing as required by the safety code.

† The chassis manufacturer recommends the installation of a supplemental brake control system to activate the brakes on the vehicle or trailer you are towing. Hitch receiver ratings expressed are maximum for the hitch receiver installed and may require the purchase of additional equipment that is dependent on the weight of the towed load. Consult with hitch receiver manufacturer for further information.

* UVW and OCCC are found on the label containing the federal certification tag in each RV.