



# FREEDOM Freedom Express TO EXPLORE

ULTRA LIGHT TRAVEL TRAILERS ▼ DEEP SLIDES ▼ TOY HAULERS ▼ EXPANDABLES



  
**Coachmen**  
Recreational Vehicles  
**50<sup>th</sup> ANNIVERSARY**







## Freedom of Choice – Ultra Lightweight Towability & Convenience

Lightweight Freedom Express has been designed for ease of towing with today's half ton and mid-sized SUVs. All tanks are located under the floor to lower the center of gravity for increased storage capacity and improved handling. Sidewalls are built with Azdel substrate that's 50% lighter than wood and is impervious to moisture, rot and mildew while providing improved insulation.

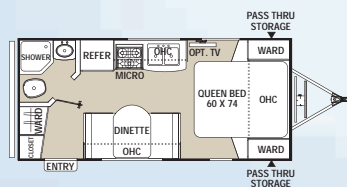
**233 RBS** This two slide, island kitchen model has a private front bedroom and expansive rear bathroom. Coupled with a deep U-dinette and entertainment tower, it's perfect for empty nesters. Shown in Truffle.



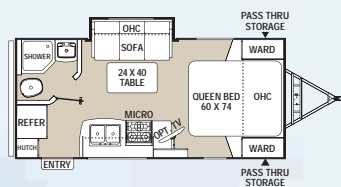
**246 RKS** This popular rear kitchen model with a jack knife sofa and wardrobe slide has plenty of storage with multiple wardrobes. Truffle decor shown.



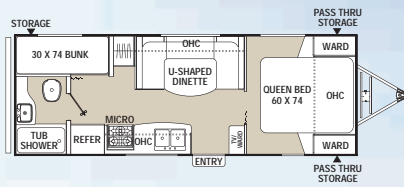
**236 BHS** This two bunk, 87" U-dinette slide model has a private front bedroom, an entertainment tower that can be viewed from the bunk area, plus plenty of counter and storage space. Shown in Cobblestone.



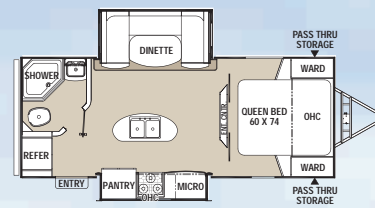
**191 RB**



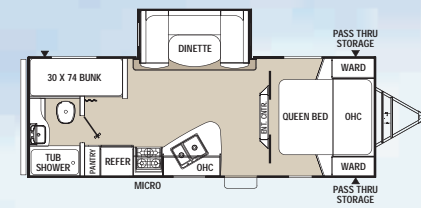
**192 RBS**



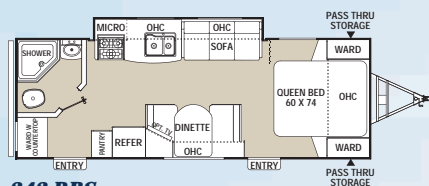
**230 BH**



**233 RBS**



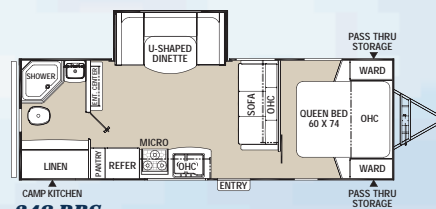
**236 BHS**



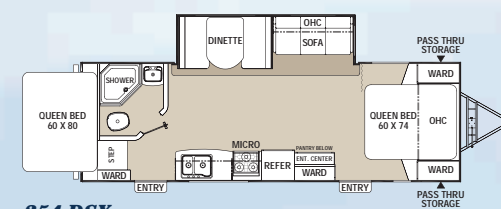
**242 RBS**



**246 RKS**



**248 RBS**



**254 DSX**

## Ultra Lights

**192 RBS** This rear bath model is under 4,000 lbs. and features a walk-around queen bed, a TV with an articulating bracket and sofa slide out. Shown in Garnet decor.

Freedom Express	191 RB	192 RBS	230 BH	233 RBS	236 BHS	242 RBS	246 RKS	248 RBS	254 DSX
Shipping Weight*	3,317	3,535	3,729	4,471	4,637	4,492	4,310	5,047	5,112
Hitch Weight	364	392	404	635	634	487	500	705	844
Carrying Capacity	2,381	2,363	2,873	2,487	2,321	2,466	2,648	2,411	2,346
Exterior Length (Bumper to Hitch)	22' 3"	22' 6"	26' 11"	24' 11"	27' 3"	27' 10"	28' 3"	28' 11"	29' 7"
Exterior Height (Includes A/C)	10'	10'	10'	10' 7"	10' 9"	10'	10'	10' 9"	10' 9"
Interior Height (Coach)	81"	81"	81"	81"	81"	81"	81"	81"	81"
Awning Length	12'	14'	18'	16'	18'	18'	18'	16'	18'
Fresh Water Capacity (gal.)	36	36	36	36	49	49	49	49	49
Grey Water Capacity (gal.)	30	30	30	30	33	33	33	33	33
Waste Water Capacity (gal.)	30	30	30	30	33	33	33	33	33
Tire Size	ST205/75R14C	ST205/75R14C	ST205/75R14C	ST205/75R14C	ST205/75R14C	ST205/75R14C	ST205/75R14C	ST205/75R14C	ST205/75R14C

\*Shipping weights do not include options.



*With a lower center of gravity and aerodynamic radius front body styling, Freedom Express is easy to maneuver creating a more enjoyable traveling experience for the driver*







**310 BHDSLE** This Liberty Edition two slide bunkhouse has a private master suite up front. There's a second entry to the bath from outside for added convenience. Shown in Autumn.



**297 RLDS** This deep slide master bedroom has a large front wardrobe, a vanity and is shown in Caramel decor.



## Total Freedom – Ultra Lightweight Selection

When there's a chance to escape from your busy life, Freedom Express makes it hassle free, fun and easy. These models are value packed with industry leading features and conveniences including Congoleum® designer flooring, seamless countertops with waterfall edges, full extension ball bearing drawer glides and our exclusive removable silverware drawer.

Our 38" Deep Slide models offer expansive single, double and triple slide living areas. Choose from the industry's best bunk and rear lounge floorplans, plus V-nose and Toy Hauler models.

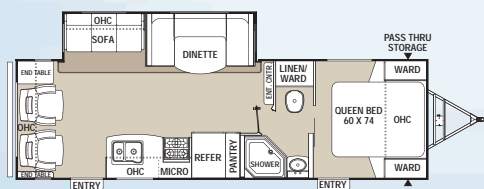
The Liberty Edition luxury upgrade is available on Deep slide models (Maple Leaf Edition in Canada). It includes high end amenities usually reserved for travel trailers and fifth-wheels costing thousands of dollars more.

**322RLDSLE**  
Redefine roughing it. This spacious triple slide has an island kitchen, theater seating, an 80" tri-fold hide-a-bed sofa, an entertainment center inside and an exterior TV. Shown in Caramel.

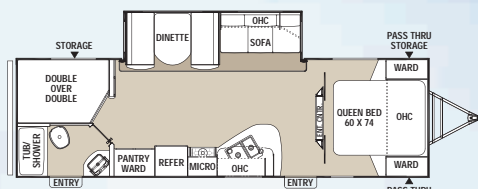


Deep Slides	281 RLDS	282 BHDS	292 BHDS
Shipping Weight*	5,550	5,572	5,492
Hitch Weight	712	737	740
Carrying Capacity	1,908	2,086	1,306
Exterior Length (Bumper to Hitch)	31' 8"	31' 11"	33' 5"
Exterior Height (Includes A/C)	10' 9"	10' 9"	10' 9"
Interior Height (Coach)	81"	81"	81"
Awning Length	18'	18'	18'
Fresh Water Capacity (gal.)	49	49	49
Grey Water Capacity (gal.)	33	33	33
Waste Water Capacity (gal.)	33	33	33
Tire Size	ST205/75R14C	ST205/75R14C	ST205/75R14C

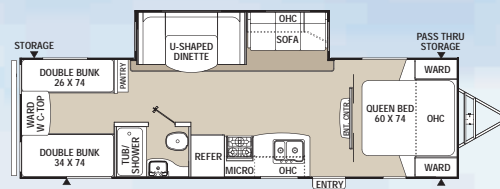
\*Shipping weights do not include options.



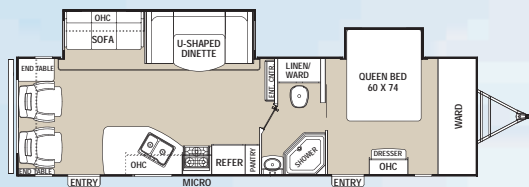
**281 RLDS**



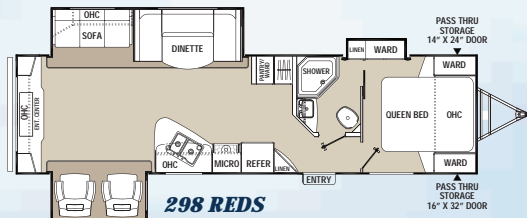
**282 BHDS**



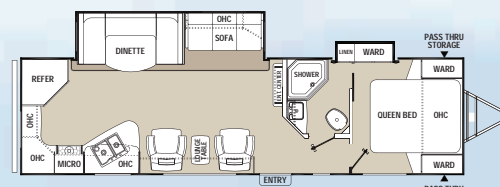
**292 BHDS**



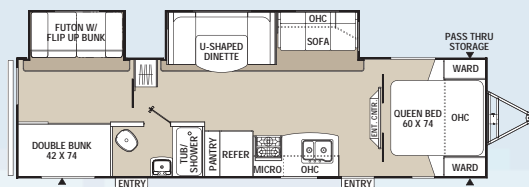
**297 RLDS**



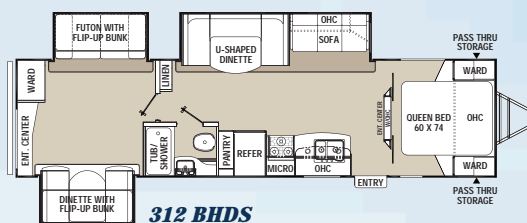
**298 REDS**



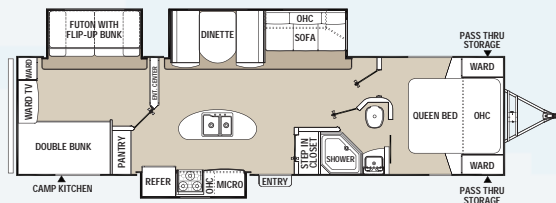
**305 RKDS**



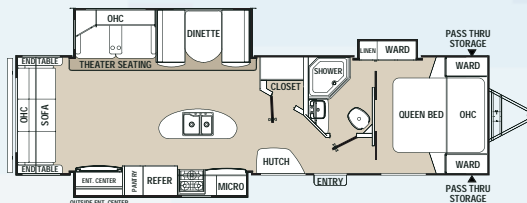
**310 BHDS**



**312 BHDS**



**320 BHDS**

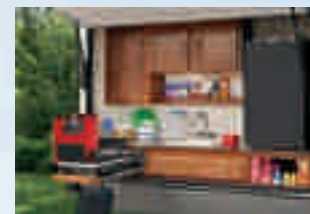


**322 RLDS**



**320 BHDS** Large closet shelves provide plenty of room for shoe storage.

**Freedom Camp Kitchen** Standard on 292 BHDS, 310 BHDS and 320 BHDS.



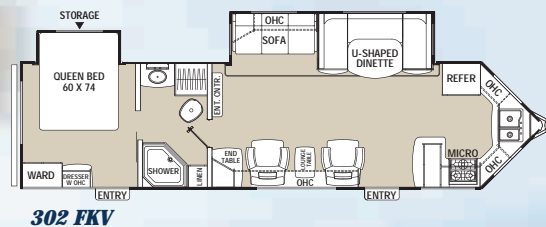
**320 BHDS** This versatile rear bedroom's upper bunk folds-up and out of the way for convenience. Cube cushions can be rearranged into different configurations for family and friends.



297 RLDS	298 REDS	305 RKDS	310 BHDS	312 BHDS	320 BHDS	322 RLDS
6,499	6,876	6,199	6,597	7,122	7,374	7,200
898	832	774	865	870	841	912
3,953	2,982	3,259	3,061	3,336	3,643	2,558
35' 2"	35' 2"	34' 6"	35' 7"	36' 9"	36' 11"	35' 11"
11'	11'	11'	11'	11' 2"	11' 2"	11' 2"
81"	81"	81"	81"	81"	81"	81"
20'	18'	20'	18'	18'	20'	20'
49	49	49	49	49	49	49
33	33	63	33	33	66	33
33	33	33	33	33	33	33
ST225/75R15D	ST225/75R15D	ST225/75R15D	ST225/75R15D	ST225/75R15D	ST225/75R15D	ST225/75R15D







<b>Freedom Express V-Nose</b>	<b>302 FKV</b>
Shipping Weight	7,063
Hitch Weight	925
Carrying Capacity	2,695
Exterior Length (Bumper to Hitch)	34' 9"
Exterior Height (Includes A/C)	11'
Interior Height (Coach)	81"
Awning Length	20'
Fresh Water Capacity (gal.)	49
Grey Water Capacity (gal.)	66
Waste Water Capacity (gal.)	33
Tire Size	ST225/75R15D

## Built for Easy Towing

### V-Nose

#### **302 FKVLE**

*This V-Nose rear bedroom slide has over 50 cu. ft. of front kitchen space for the chef on board. The large wrap-around countertop provides plenty of workspace. The spacious living room is perfect for entertaining. Twin rocking chairs are shown here with a clever convertible end table that flips-up to create a cushiony extra seat for the U-dinette. Shown in Autumn decor with the Premium Package.*

*V-Nose models are only available in the Liberty and Maple Leaf Edition Packages.*





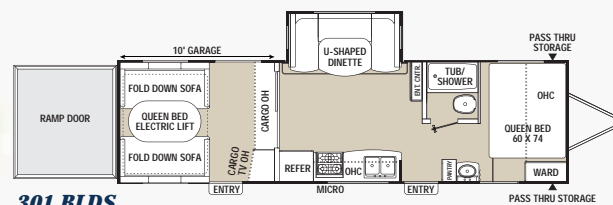
## Toy Haulers

Whether you're hauling mini-bikes or motocross, four wheelers or Fat Boys, there's a Freedom Express Toy Hauler for you. The Deep Slide 301BLDS has a 10' enclosed garage with a slider patio door, raised roof line and a beavertail ramp transition.

### 301 BLDS

*This model has a front bedroom, a deep U-dinette with versatile rear quarters for extra sleeping space, toy storage and entertaining. Patio doors provide a vapor barrier or room separation.*

*Shown in Cobblestone.*



**301 BLDS**

### Freedom Express Blast 301 BLDS

Shipping Weight	6,459
Hitch Weight	950
Carrying Capacity	3,399
Exterior Length (Bumper to Hitch)	33' 7"
Exterior Height (Includes A/C)	11' 10"
Interior Height (Coach)	90"
Awning Length	18'
Fresh Water Capacity (gal.)	98
Grey Water Capacity (gal.)	33
Waste Water Capacity (gal.)	33
Tire Size	ST225/75R15D

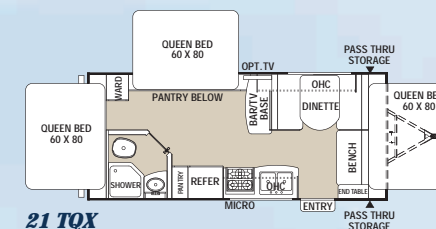




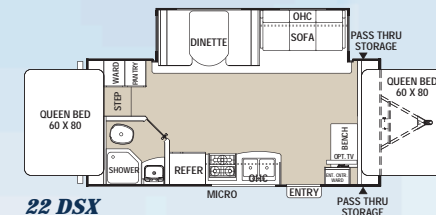
**21 TQX** Freedom Express Expandables feature exceptional floor space, storage and counter space – remarkable for an expandable! This triple-tent 21TQX is shown in Truffle decor.

## Expandables

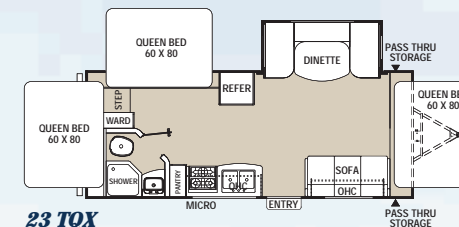
Pack all the livability of a 28'-33' travel trailer into the towability (and price) of a 19'-23' trailer. Freedom Express Expandables are easy to tow and come with the Secure-Lok tent system which eliminates the hassle of Velcro or bungees, making set-up and tear-down a snap – even for one person.



**21 TQX**



**22 DSX**



**23 TQX**



Freedom Express Expandables	21 TQX	22 DSX	23 TQX
Shipping Weight*	3,335	4,135	4,293
Hitch Weight	430	550	635
Carrying Capacity	2,463	2,863	2,665
Exterior Length (Bumper to Hitch)	22' 7"	22' 2"	24' 3"
Exterior Height (Includes A/C)	10' 3"	10' 9"	10' 9"
Interior Height (Coach)	81"	81"	81"
Awning Length	14'	16'	18'
Fresh Water Capacity (gal.)	36	36	36
Grey Water Capacity (gal.)	30	30	30
Waste Water Capacity (gal.)	30	30	30
Tire Size	ST205/75R14C	ST205/75R14C	ST205/75R14C

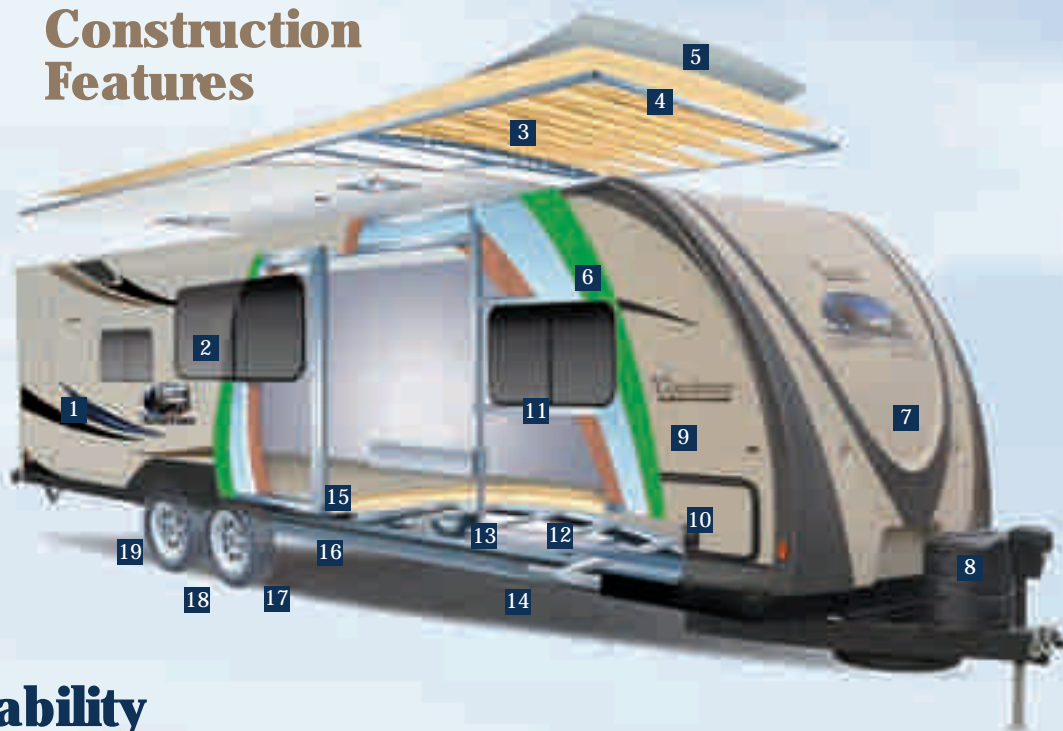
\*Shipping weights do not include options.





**21 TQX** This roomy Expandable features three fold-out queen beds, plenty of storage – all at a weight less than 4,000 lbs.!

## Construction Features



1. 3M breathable graphics
2. Tinted, safety glass windows
3. Trussed crossmembers
4. Crowned aluminum reinforced roof
5. EDPM rubber roofing
6. Azdel Composite Panels
7. Aerodynamic front profile
8. Dual 20 lb. LP gas tanks
9. Welded Aluminum structure, vacuum-bonded sidewalls and flooring
10. Smooth exterior fiberglass skin
11. Aluminum framed openings
12. Fully enclosed, heated underbelly (27' and above)
13. Fully welded tubular aluminum floor structure
14. Happijac SureTrac™ rack and pinion slide systems
15. Congoleum Designer Carefree Resilient Flooring
16. Powder E-coated, welded I-beam frame
17. Super-Lube® axle hubs
18. Stable-Ryd® spread axle design (27' and above)
19. Nitrogen filled radial tires

## The Ultimate in Towability

### Lightweight

- ▼ Laminated sidewalls and floor
- ▼ Azdel behind the walls
- ▼ Bow trusses aluminum and wood
- ▼ Rod & angle crossmembers in frame
- ▼ All tanks mounted under floor to lower center of gravity and improve interior storage

### Aerodynamic

- ▼ Aerodynamic front profile (Cuts through the air)
- ▼ Enclosed underbelly (Reduced turbulence/drag)

### Stable-Ryd® Suspension

- ▼ Spread axle improves weight distribution.
- ▼ Wide track axles provide a wider, more secure stance on the road.
- ▼ Spread axle design allows us to reduce the tongue weight for optimum performance.



- ▼ 50% Lighter than wood
- ▼ No rot, mold or water damage
- ▼ R-2 thermal insulation
- ▼ Odorless, no formaldehyde
- ▼ Sound & energy absorbing
- ▼ Impact & puncture resistant
- ▼ Made in USA

## Freedom Express is Truly Green



Freedom Express is TRA gold level rated. As a certified green RV, Freedom Express utilizes effective production techniques in combination with healthy materials, plus efficient usage of energy and water to produce a high quality RV with less environmental impact.



# Lightweight Towability and Enhanced Aerodynamics

Freedom Express Ultra-Light travel trailers are ideal for half-ton tow vehicles and optimized fuel efficiency. Designed with fully laminated, aluminum framed walls and floor, Freedom Express travel trailers and hybrid expandables are incredibly lightweight and durable.

## Freedom Express & Deep Slide Standard Features & Options

FE = Freedom Express Ultra Lites ▼ LE = Liberty/Maple Leaf Edition Ultra Lites ▼ DS = Deep Slide Models ▼ EXP = Expandable Models ▼ TH = Toy Hauler

	FE	LE
<b>INTERIOR &amp; DÉCOR</b>		
Cierra Cherry Colored Cabinetry and Arched Overheads	X	X
Maple Hardwood Cabinet Doors and Drawer Faces	X	X
Furniture Grade, Pocket Drilled and Screwed Stile and Rail Cabinet Front Construction	X	X
Mortise and Tenon Cabinet Door Construction	X	X
Full Extension Roller Bearing Drawer Guides	X	X
Three Designer Decors - Cobblestone, Garnet, Truffle	X	N/A
Three Designer Decors - Autumn, Caramel, Desert Onyx	N/A	X
Designer Hard Valance Window Treatments	X	X
Pleated Night Shades (N/A in kitchen)	X	X
Optic-Lense Lighting Package	X	X
Range Hood with 12V Exhaust and Light	X	X
Sealed/Seamless Countertops	X	X
LG Solid Surface Kitchen Countertops with Undermount Sink	N/A	X
Brushed Nickle Hardware	X	X
High-Rise Kitchen Faucet	X	X
60/40 Stonecast Composite Kitchen Sink	X	X
Silverware Drawer with Removable Tray	X	X
Jackknife Sofa	X	N/A
43" Deep Convertible Booth Dinettes (Select models)	X	X
87" Convertible U-Dinettes (Select models)	X	X
Dinette Storage Access Doors	X	X
Hide-A-Bed Sofa (Most Deep Slide models)	OPT	STD
Accent Wall in Master Bedroom	X	X
Evergreen Sleep System Mattress	X	X
Two Full-Length Mirrored Closets in Master, and Over-Bed Cabinets with Integrated Reading Lights	X	X
Two Nightstands with 110V Outlets (Most models)	X	X
Storage Under Master Bed and Bunks (Select models)	X	X
Wooden Privacy Slider Doors to Master Suite		
In Place of Curtain or Accordion Door (Most models)	X	X
Entertainment Tower with Rotating TV for Bedroom Viewing (Select models)	X	X
Exhaust Vent with Fan in Bathroom	X	X
Wood Medicine Cabinet with Bathroom Mirror	X	X
Foot Pedal Toilet	X	X
Porcelain Toilet	N/A	X

	FE	LE
Interior Speakers with Selector Switch	X	X
55 Amp Power Converter	X	X
GFI Receptacles in Bathroom and Kitchen	X	X
LP Leak Alarm	X	X
Fire Extinguisher	X	X
Smoke and Carbon Dioxide Detector	X	X
Multiple Egress Windows with Screen and Prop Rod	X	X
Shoe Storage (Select models)	X	X
Ducted Air Conditioning (27' and above)	X	X
Cable Support Tent Ends - 1000# Capacity (EXP)	EXP	N/A
Frame Mounted Tie-Down D-Rings In Floor	TH	TH
Adjustable High/Low Fresh Air Vents	TH	TH
Zippered Roll-up Screen Wall with Privacy Panels at Ramp Door	TH	TH
Two Jackknife Sofas In Cargo Area	TH	N/A
Large Indoor/Outdoor folding Table	TH	N/A
Raised Roof Line - 90" Interior Cargo Height	TH	TH
Beavertail Ramp Transition	TH	TH
Sliding Patio Door Between Cargo and Living Areas	TH	TH
Helmet/Gear Storage in Cargo Area	TH	TH
<b>EXTERIOR</b>		
Aerodynamic Front Profile	X	X
Dual 20# LP bottles	X	X
LP Bottle Cover w/Valve Access	X	X
60° A-frame	X	X
Dual Battery Rack	X	X
Insulated, Painted Radius Entry Door with Screen Door	X	X
Amber Patio Light	X	X
Double Entry Step	X	N/A
Triple Entry Step	N/A	X
Wide Stance Stable-Ryd Spread Axle Design (27' and above)	X	X
Premium Aluminum Rims	X	X
Nitrogen Filled Radial Tires	X	X
3M Digitally Printed, Breathable Graphics	X	X
Black Framed, Tinted, Safety Glass Windows	X	X
Door Side Cable TV Connection	X	X
Super Lube Axles	X	X

	FE	LE
Dehco TV/Stereo Antenna	X	X
Marine Grade Exterior Speakers	X	X
Lighted Expanded Pass-through Storage (Most models)	X	X
Water Heater Bypass	X	X
30 Amp Power Cord with Storage Compartment	X	X
Heavy Duty Welded Safety Chains	X	X
Four-Wheel Electric Brakes	X	X
Breakaway Safety Cable	X	X
Exterior GFI Outlet Near Awning	X	X
High-Capacity Roto-Cast Holding and Fresh Water Tanks	X	X
Hinge Mounted Spring Assist Ramp Door System	TH	TH
Integrated Bar and Latch Locking System on Ramp Door	TH	TH
HappiJac Double Hat Rail, Rack and Pinion 12V Slide System (18" slides)	X	X0
LCI Rack and Pinion 12V Slide System with Full Width Welded Ram (38" slides)	X	X
A-Frame Mounted Generator/Storage Rack (N/A on Liberty/Maple Leaf Editions)	TH	N/A
Electric Awning (IPO Manual)	X	X
<b>CONSTRUCTION</b>		
Powder E-Coated Welded I-Beam Frame with Full Width Outriggers	X	X
Alumicage Welded Aluminum Structure, Vacuum Bonded Floor and Sidewalls	X	X
Azdel Composite (IPO luan behind fiberglass)	X	X
Smooth Fiberglass Exterior Skin	X	X
Aluminum Framed Openings	X	X
Powder E-Coated Steps and Axles	X	X
Floorplan Specific Cambered Frame Design	X	X
Full Walk-on, Crowned, Aluminum Reinforced Roof with EPDM Membrane over 3/8" Roof Decking	X	X
Double Wiper Seals on All Slideouts	X	X
Enclosed and Heated Underbelly (27' and above)	X	X
<b>STANDARD EXTRAS</b>		
Green Certification	X	X
Seal Tech and Rain Bay Testing on Every Unit	X	X
One-Year Free Membership to Coachnet Roadside Assistance	X	X
One-Year Free Membership to Coachmen Owner's Association (C.O.A.)	X	X

### Standard Decor

Cobblestone



Garnet



Truffle





# Freedom Express Options & Packages

	FE	LE	27' Models and Above	FE	LE	27' Models and Below	FE	LE
OPTIONS			<b>FREEDOM VALUE PACKAGE (Required)</b>	<b>X</b>	<b>X</b>	<b>FREEDOM VALUE PACKAGE (Required)</b>	<b>X</b>	<b>N/A</b>
• 15,000 BTU A/C	X	X	• Black and Tan Exterior			• Black and Tan Exterior		
• 50 Amp Service with Second A/C Prep	X	X	• Aluminum Wheels			• Aluminum Wheels		
• Push-button Power Stabilizer Jacks (27' and above)	X	X	• Power Awning			• Power Awning		
• Power Tongue Jack	OPT	STD	• 24" or 32" LED TV			• 24" or 32" LED TV		
• Coleman Slide-Out High Output Grill (Select models)	X	X	• AM/FM/CD/DVD			• AM/FM/CD/DVD		
• Recliners	N/A	X	• 4 Interior, 2 Exterior Speakers			• 4 Interior, 2 Exterior Speakers		
• Frameless Windows	X	X	• Skylight			• Skylight		
• Liberty/ Maple Leaf Edition Luxury Upgrade (DS only- description below)	N/A	X	• Stonecast Sink			• Stonecast Sink		
• Electric Queen Track Bed	TH	TH	• Night Shades in the Living Area			• Night Shades in the Living Area		
• Second Electric Queen Track Bed	TH	TH	• Metal Skirting			• Metal Skirting		
• Canadian Compliance	X	X	• Color Matched Fenders			• Color Matched Fenders		
<b>LIBERTY/MAPLE LEAF EDITION</b>	<b>N/A</b>	<b>X</b>	• Folding Entry Assist Handle			• Folding Entry Assist Handle		
• Raised Panel Cierra Glazed Maple Doors			• Ducted Ceiling Air Conditioning (27' and above)			• Push-button Power Tongue Jack		
• Raised Panel Refer Inserts			• Heated Enclosed 32/34 Holding Tanks (27' and above)			• Spread Axle Design (27' and above)		
• LG Solid Surface Kitchen Countertop with Undermount Sink and Sink Covers			• 49 Gallon Fresh Water Holding Tank (27' and above)			• 6 Gallon Gas/Electric DSI Hot Water Heater		
• Hinged Door, Slider Door, and Pots and Pans Drawer Under Dinette			• Push-button Power Tongue Jack			• Tinted Safety Glass Windows		
• Three Upgrade Décors - Autumn, Caramel, Onyx			• Spread Axle Design (27' and above)			• TV Antenna with Booster		
• Porcelain Toilet with Foot Flush			• 6 Gallon Gas/Electric DSI Hot Water Heater			• Exterior Shower Station		
• Kitchen Feature Wall/Backsplash			• Tinted Safety Glass Windows			• Spare Tire Kit		
• Central Control Panel for Switches and Gauges			• TV Antenna with Booster			• Front Diamond Plate		
• Congoleum Designer Carefree Premium Floorcovering			• Exterior Shower Station			• EZ Lube Axles		
• 32" LCD TV			• Spare Tire Kit			• RVIA		
• Freedom Sky View Window with Pleated Shade and Hi-Intensity Puck Lights over Dinette			• Front Diamond Plate			• Congoleum Flooring		
• Sconce Light in Slide Out			• EZ Lube Axles			• Mortise and Tenon Cabinet Doors		
• LED Accent Lights in Kitchen			• RVIA			• Microwave		
• Painted Fiberglass Cap with LED Hitch and Marker Lights			• Congoleum Flooring			• Oven with 3 Burner Cooktop		
• Special Liberty/Maple Leaf Edition Graphics with Charcoal Skirt Metal			• Mortise and Tenon Cabinet Doors			• 6 Cu. Ft. Two Door Refrigerator		
• Slam Latch Baggage Doors on Pass Through Storage			• Microwave			• 18,000 BTU Furnace		
• Enclosed and Heated Gate Valves			• Oven with 3 Burner Cooktop			• Silverware Drawer		
• Camp Side Security Light			• 6 Cu. Ft. Two Door Refrigerator			• Evergreen Queen Mattress (Select models)		
• Black Tank Flush System			• Ducted Furnace (27' and above)			<b>50TH ANNIVERSARY PACKAGE</b>	<b>X</b>	<b>X</b>
			• Silverware Drawer			• 50th Anniversary Wall Clock Replaces Standard Clock		
			• Evergreen Queen Mattress (Select models)			• Darkwood Anniversary Edition Block in Center Replaces Current		
			<b>PREMIER PACKAGE</b>	<b>N/A</b>	<b>X</b>	• LED 4" Recessed Lights in Living Area		
			• 26" Electric Fireplace with Slate and Walnut Look Surround			• LED Pancake Lights at Overhead Cabinets and Bedroom		
			• Large 8 Cu. Ft. Refrigerator			• White LED Awning Light		
			• Energy Efficient LED Lighting over Dinette			• LED Step Light		
			• Coffered Ceiling with LED Accent Lights			• LED Lights Throughout Coach		
						• 24" x 48" Anniversary Table		



## Liberty Edition Decor Upgrade

*Autumn*



*Caramel*



*Desert Onyx*





# FREEDOM Freedom Express TO EXPLORE

MODERN LIVING • THOROUGH FINISHES • DRIFTWOODS • TOP QUALITY • EXPANDABLES



**Find out why Freedom Express has become one of the most demanded ultra light towable RV brands on the market today!**



## Travel Easy™ Roadside Assistance

RVing is easier with Coachmen's Travel Easy™ Roadside Assistance provided FREE the first year of ownership to those who purchase a New Coachmen RV. Administered by Coach-Net, this service provides you with 24/7 operational, technical and emergency road service coverage. Also included is towing, fuel delivery, jump starts, lockout service, tire changes, mobile mechanic and unlimited technical assistance. Anywhere. Anytime. Travel Easy™ is the security of knowing that help is an easy phone call away.



## Big benefits for new owners – FREE One Year Membership in the Coachmen Owners Association!

Coachmen is proud to sponsor the largest manufacturer sponsored camping club in North America...Coachmen Owners' Association (COA). COA provides you a world of ways to enjoy your RV. This is FUN ON OVERDRIVE and provides: Free Trip Routing, Exciting Tours & Rallies, Free Campground Directory, Local/State Club Activities, Easy RVing Magazine Free, Theme Park Discounts, Fuel Discounts, Free onebigplanet® Memberships with discounts at 180,000 merchants and Much More! Every new Coachmen RV buyer is eligible for a 1 Year FREE membership in the Coachmen Owners' Association. It all adds up to an easy ownership experience!



423 N. Main Street ▼ P.O. Box 30 ▼ Middlebury, IN 46540

To learn more about Coachmen RV and our products and see how Coachmen is making the easy life easier, visit [www.coachmenrv.com](http://www.coachmenrv.com) or call 1.800.353.7383.



Forest River, Inc. encourages our customers to purchase their Forest River products from a local dealership whenever possible for the following reasons:

- 1) Forest River, Inc. dealers are independently owned and operated businesses so priority service and scheduling is at their discretion and is often provided to customers that purchased their unit at that dealership.
- 2) Purchasing locally allows customers to establish meaningful relationships with a dealer, enhancing the RV experience through assistance with product questions, user tips or RV regulations for your state or country, and much more!
- 3) Canadian customers must meet requirements to bring an RV purchased out of the country to their home. These requirements may involve additional inspections and certifications, taxes and fees. Your local Canadian Dealer is a professional at meeting these requirements.
- 4) Scheduling timely warranty repairs and adjustments through a local dealership provides far greater flexibility and convenience to you, the customer!

It is the goal of Forest River, Inc. that all of our RV owners fully enjoy the RV experience and that customer satisfaction meets or exceeds their expectations!



Learn More  
Scan this barcode using a QR Reader on your smart phone to learn more about Forest River.



A Berkshire Hathaway company.

All information contained in this brochure is believed to be accurate at the time of publication. However, during the model year, it may be necessary to make revisions and Coachmen reserves the right to make all such changes without notice, including prices, colors, materials, equipment and specifications as well as the addition of new models and the discontinuance of models shown in this brochure. Therefore, please consult with your Coachmen dealer and confirm the existence of any materials, design or specifications that are material to your purchase decision. All units are shipped F.O.B. point of manufacture. ©Forest River, Inc. 2013 Freedom Express 11/13