

**FLEETWOOD**  
*Driven to Explore*

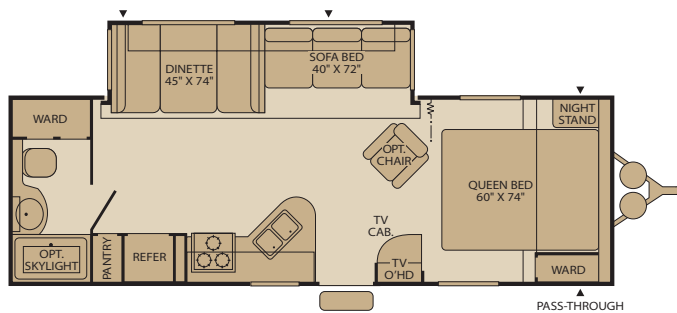
TERRY DAKOTA-Travel Trailers and Fifth Wheels-2006

**TERRY®**  
**DAKOTA**

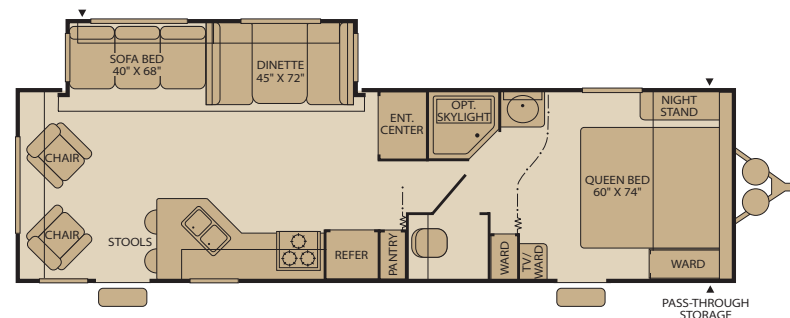


## Travel Trailer Floor Plans

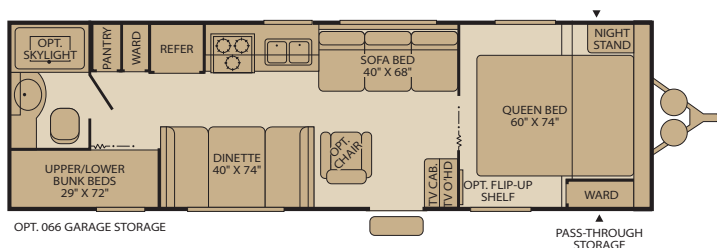
**270FQS**  
Single Slide-Out  
Sleeps 6



**300RLS**  
Single Slide-Out  
Sleeps 6

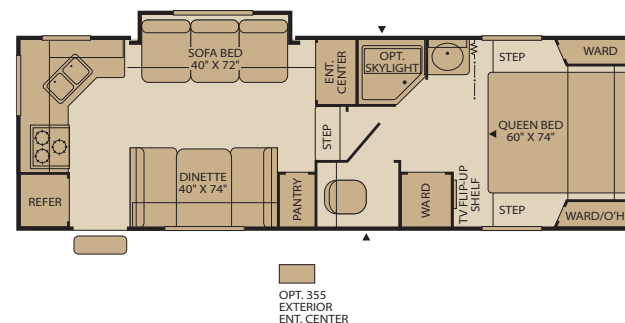


**280BH**  
Sleeps 8

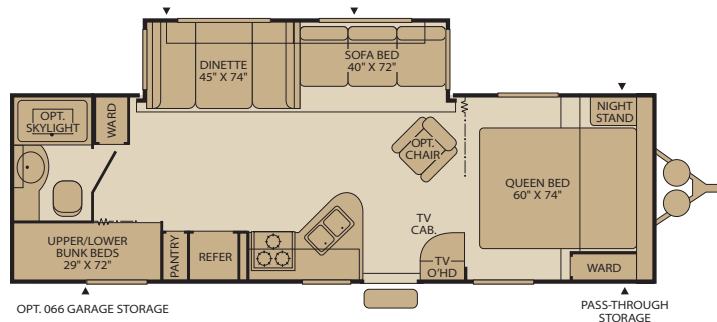


## Fifth Wheel Floor Plans

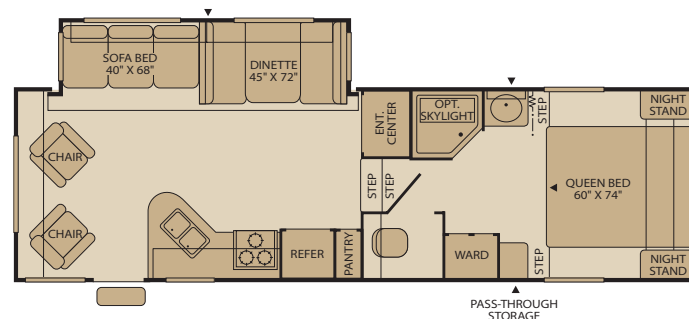
**255RKS**  
Single Slide-Out  
Sleeps 6



**290BHS**  
Single Slide-Out  
Sleeps 8



**275RLS**  
Single Slide-Out  
Sleeps 6



Some models are not available in all areas of the country.  
Please see your local dealer for model availability.

Sleeping capacity based on standard layout.  
Optional furniture may increase or decrease sleeping capacity.

## Weights and Measurements

	TRAVEL TRAILERS				FIFTH WHEELS	
WEIGHTS	270FQS	280BH	290BHS	300RLS	255RKS	275RLS
GVWR (lbs) <sup>1</sup>	7,300	6,800	7,500	7,600	8,100	9,000
Gross Dry Weight (lbs) <sup>2,6</sup>	5,160	4,491	5,265	N/A	5,910	6,574
Cargo Carrying Capacity (lbs) <sup>3,6</sup>	2,140	2,309	2,235	N/A	2,190	2,426
Hitch Dry Weight (lbs) <sup>2,6,9</sup>	546	439	545	N/A	1,372	1,426

DIMENSIONS AND CAPACITIES						
Length (Feet and Inches) <sup>4,6,8</sup>	29' 0"	30' 6"	30' 6"	33' 6"	27' 7"	30' 3"
Height (Feet and Inches) <sup>5,6</sup>	9' 11"	9' 7"	9' 11"	9' 11"	11' 0"	11' 4"
Fresh Water Holding Tank (gal) <sup>6,7</sup>	40	40	40	40	40	40
Grey Water Holding Tank (gal) <sup>6,7</sup>	40	40	40	21/21	40	40
Black Water Holding Tank (gal) <sup>6,7</sup>	40	40	40	40	40	40
Propane Capacity (lbs) <sup>6,7</sup>	60	60	60	60	60	60
Tire Size (Load Range)	ST205/ 75R 14(C)	ST205/ 75R 14(C)	ST205/ 75R 14(C)	ST205/ 75R 15(C)	ST205/ 75R 14(C)	ST225/ 75R 15(C)

- GVWR (Gross Vehicle Weight Rating) is the maximum permissible weight of this trailer when fully loaded. It includes all weight at the trailer axle(s) and tongue or pin.
- All dry weights are based on the standard model and do not include optional features or equipment.
- Cargo Carrying Capacity is determined by subtracting Gross Dry Weight from GVWR. Cargo Carrying Capacity includes all fluids, optional features, equipment, and personal cargo.
- Length taken from hitch or pin box to rear bumper (excludes accessories). Trailer length includes 3' 6" for hitch; fifth wheel includes standard pin box.
- Add 9" if equipped with optional roof air conditioner.
- Approximate.
- Water weight equals 8.3 lbs per gallon. Propane weight equals 4.2 lbs per gallon.

- Add 10" if equipped with optional spare tire and carrier.
- Hitch weights are dependent upon how the trailer is equipped with options, on-board cargo and tank fluid levels. Actual hitch weights may be higher or lower than shown. It is recommended that the tow vehicle and hitch for your trailer have sufficient capacity to accommodate actual usage.

N/A = Not available at time of printing.

**IMPORTANT— PLEASE READ:** Product information, photography and illustrations included in this publication were as accurate as possible at the time of printing. For further product information and changes, please visit our website at [www.fleetwoodrv.com](http://www.fleetwoodrv.com) or contact your local Fleetwood dealer. Prices, materials, design and specifications are subject to change without notice. All weights, fuel, liquid capacities and dimensions are approximate. Fleetwood has designed its recreational vehicles to provide a variety of uses for customers. Each vehicle features optimal seating, sleeping, storage and fluid capacities. The user is responsible for selecting the proper combination of loads (i.e., equipment, fluids, cargo, etc.) to ensure that the vehicle's capacities are not exceeded.

### To Our Customers...

To make sure that you get the maximum satisfaction out of your recreational vehicle purchase, there are several things you should know:

- Learn all you can about the travel trailer or fifth wheel you're planning to buy. Don't rely on word of mouth. Get the facts about the actual trailer length, width, unloaded weight with options, Gross Vehicle Weight Rating, and cargo carrying capacity. These are usually available in the manufacturer's sales literature or from the Cargo Carrying Capacity Label located in each trailer. Be sure to check this information **before** you decide which unit to buy.

- Verify the towing capacity of your tow vehicle. If you don't know, or aren't sure, you can ask at your automotive dealership. Be sure to match its tow rating to the loaded (not dry) weight of your trailer. Include the weight of water, additional accessories, clothing, food, and gear. To help Fleetwood travel trailer customers estimate this total weight, our Gross Vehicle Weight Ratings reflect the maximum weight of the trailer when fully loaded for camping. Be sure the weight of the tow vehicle plus the weight of your trailer do not exceed the Gross Combined Weight Rating of the tow vehicle.

Taking these simple steps before you buy will help ensure that your trailer and tow vehicle combination is just what you wanted.

Happy Camping!

## Standard Features

### Interior

#### THROUGHOUT

- **8' Wide Units - 92-5/8" Interior Width**
- **80" Interior Height**
- **Deluxe Roller Bearing, Full Extension Drawer Guides**
- 6-Gallon Propane Water Heater
- Arched Panel Overhead Cabinet Doors
- Cable TV Hook-Up
- Hydroflame Direct Spark Ignition Furnace w/Thermostat
- Miniblinds Throughout (Except Bunk Windows)
- Overhead Storage Cabinets
- Prewired for Roof Air Conditioner
- Prewired for Stereo & Speakers
- Prewired for TV Antenna
- Range Hood w/12V Light & Exhaust Fan
- Solid State Converter w/Built-in Battery Charger (Amps Vary by Floor Plan)
- Ventilating Slide-Out End Windows
- Water Heater Bypass

#### GALLEY

- **3 Burner (1 High-Output) Range w/Oven**
- **Dometic® Propane/Electric Refrigerator**
- **Double Bowl Stainless Steel Sink**
- **Pots & Pans Drawer (Most Models)**
- Decor Wall Border
- Full-Shelf Storage, Below Sink
- High Rise Faucet
- Pantry w/Fixed Shelves
- Pedestal Table w/Large Dinette Window (Most Models)
- Residential Height Countertops

#### BEDROOM

- **Innerspring Mattress**
- **Lift-Up Bed Platform w/Below Bed Storage (Most Models)**
- **Wardrobes Accommodate Residential Size Clothes Hangers**
- Decor-Coordinated Bedspread and Headboard

#### BATHROOM

- **Medicine Cabinet w/Mirrored Door**
- **Tub/Shower Surround**
- 12V Power Exhaust Roof Vent
- Glass Shower Enclosure (Select Models)
- Thetford® Fresh Water Flush Toilet
- Two Towel Bars
- Wall-Switched Ceiling Light

#### SAFETY/CONVENIENCE

- Carbon Monoxide Detector/Alarm
- Fire Extinguisher
- Propane Detector/Alarm
- Smoke Detector/Alarm

### Exterior

#### THROUGHOUT

- **Aluminum Framed Sidewalls**
- **Dual 30 lb. Tank Propane Cylinders w/Regulator & Auto-Changeover**
- **Propane Bib (Low Pressure) w/Quick Release Fitting**
- **Seamless, One-Piece Rubber Roof**
- **Smooth Fiberglass Siding**
- **Sub-Floor Fresh Water Holding Tank**
- 120V Patio Receptacle
- Dual Battery Rack
- Hitch Light
- Molded Step Trim
- Molded Wheel Well Skirts
- Patio Light-Interior Switch
- Radius Truss Roof Rafters
- Rear Bumper w/Sewer Hose Carrier
- Stabilizer Jacks (Slide-Out Models Only)

#### SAFETY/CONVENIENCE

- **Large Lend-A-Hand Assist Handle**
- **Wall-Mounted Systems Monitor Panel**
- 120V GFI Circuit Protection (Galley/Bath/Patio)
- 4-Wheel Electric Brakes
- Break-Away Emergency Disconnect Brake
- Entry Step Light
- Retractable Entry Step w/Non-Skid Strip

#### STORAGE

- **Locking, Insulated Luggage Compartments w/Lights**

## Options

#### THROUGHOUT (Interior)

- 13,500 BTU Air Conditioner
- 15,000 BTU Air Conditioner
- AM/FM Stereo/CD Player & Upgraded Speaker
- AM/FM Stereo/CD/DVD Player w/Home Theater Sound System
- Day/Night Shades
- Propane Direct Spark Ignition 6-Gallon Water Heater
- Whole Coach Water Filtration System

#### BEDROOM

- Bedroom Carpet (Most Models)

#### LIVING ROOM

- Lambrequins
- Living Room Carpet (Most Models)

#### GALLEY

- Free-Standing Dinette (Most Models)
- Microwave
- Range Cover

#### THROUGHOUT (Exterior)

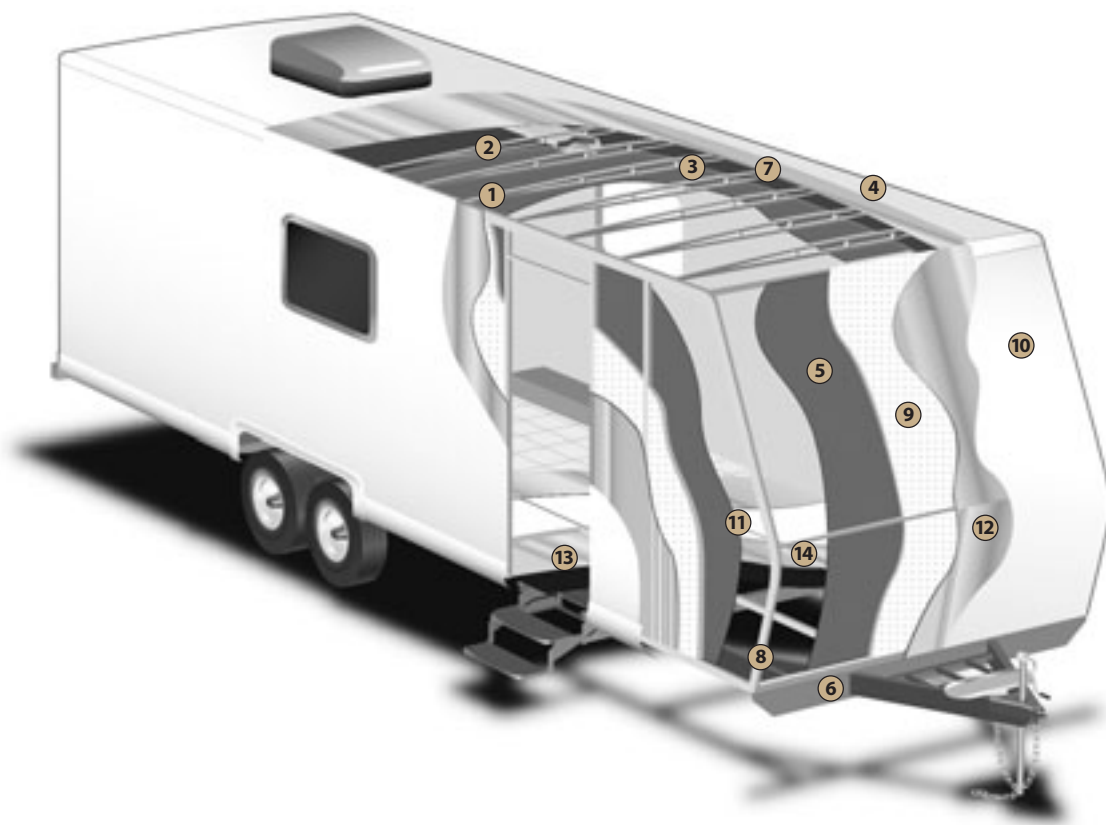
- Custom Wheels
- Enclosed Chassis w/Heated Holding and Water Tanks
- Exterior Entertainment Center
- Exterior Shower
- Front ABS Cap
- Patio Awning
- RVQ Exterior BBQ
- Safety Glass Windows
- Slide-Out Toppers
- Spare Tire and Carrier
- TV Antenna

## Decor Choices

- Iceberg (Blue)
- Rose Petal (Burgundy)
- Seaside (Neutral)
- Willow Bend (Green)

## A Look Into What it Takes to Build the World's Best Travel Trailers and Fifth Wheels

It takes more than good looks to become one of America's leading RV manufacturers. It takes quality. Quality in the way we design, test, and build our products. Quality in our furnishings, appliances and other conveniences. And because we want our customers for life, we pay strict attention to every detail from concept to completed product. Fleetwood – not just another pretty face. You'll have to look a lot deeper. That's where our true beauty lies.



- 1. Engineered Radiused Ceiling Truss** – Ensures strength, water runoff and reduced weight.
- 2. In-Ceiling Air Conditioning Duct** – Distributes cool air throughout the RV better than in-floor ducting.
- 3. Fiberglass Insulation** – Ensures interior comfort in every season.
- 4. Arctic White Seamless, One-Piece Rubber Roof** – Provides the ideal weather seal.
- 5. Interior Wall Panel** – Features a durable, easy-to-clean, decorative vinyl.
- 6. Steel Chassis** – Provides optimal strength, durability and performance.
- 7. Wood Decking** – Provides a solid backbone for the roof construction.
- 8. 1 1/2" Wide Aluminum Tubing** – Lightweight, structural studs blend proven framing methods with technologically superior materials.
- 9. High-Density Block Foam Insulation** – Is custom fit to ensure maximum structural integrity and insulation value.
- 10. Smooth Gloss Fiberglass Exterior Siding** – Adds more structural integrity than aluminum siding, provides a glossy surface that is easy-to-clean and adds long lasting beauty.
- 11. Laminated Plywood Floor** – Provides the interior structural strength to the laminated floor construction.
- 12. Wood Substrate** – Adds structural reinforcement to the exterior fiberglass panel.
- 13. Wood Floor Substrate** – Provides the foundation for the all-weather underbelly.
- 14. Underbelly** – Is a lightweight seamless, durable weather barrier.

*Drawings are for illustrative purposes only to highlight aspects of construction. Actual RV design depends on model and is subject to change.*



## What Drives You?

Maybe it's feeling like you're the only one on Earth. Perhaps it's the unique sense of closeness with the great outdoors. Or, it might be the joy that comes from spending quality time with family and friends. Whatever the reason, we know that you have a strong drive to experience everything that comes with spending time on the road. And for more than 50 years, we've shared that passion with you. Because we're RV enthusiasts ourselves, you can see our passion in the vehicles we design and build. Own a Fleetwood, and you'll feel like you're not just traveling, but embarking on an experience unlike any other. Set your own course for adventure and get out there and explore the world around you. Once you do, you'll see what it is that drives us — it's you.

### RV OWNERCARE\*

#### The Fleetwood One-Year Hitch to Bumper Warranty Coverage\*

This comprehensive program includes systems, appliances, components and construction — with no additional costs to you.

#### One-Year Full Warranty\*

Leaving the Fleetwood dealership after you've purchased your RV doesn't mean leaving Fleetwood's commitment to your satisfaction behind. This complete warranty is unique because it's just that — complete.

#### Fully Transferable\*

Because we don't hesitate to stand behind our products, the complete **warranty is fully transferable** during the 12 months of warranty coverage, which is a plus for resale value.

#### National Coverage

Traveling to Spokane? Buffalo? We've got you covered with one of the nation's largest trained service networks. In fact, **1,100 Fleetwood dealers** are just a phone call away.

**Require these features when you purchase your new RV...  
Fleetwood does.**



[www.fleetwoodrv.com](http://www.fleetwoodrv.com)

\*For complete info see your Fleetwood dealer. ©2006. Fleetwood Enterprises, Inc.  
Printed in the USA. Inventory control number TED06F2 1/06.

**FLEETWOOD TRAVELCADE CLUB** As a Fleetwood owner, you're eligible to become a member of our owners' group, Fleetwood Travelcade Club. It's a perfect way to meet other Fleetwood owners who love to travel across America and share in the RV lifestyle. Call (877) 577-2560 or visit [www.fleetwood.com/clubs](http://www.fleetwood.com/clubs) to learn more and join the fun!

**FLEETWOODRV.COM** To locate a dealer near you, visit our website or call 1-800-444-4905. We can also be contacted at Fleetwood Customer Relations, P.O. Box 7638, Riverside, CA 92513-7638.

**IMPORTANT—PLEASE READ** Product information, photography and illustrations included in this publication were as accurate as possible at the time of printing. For further product information and changes, please visit our website at [www.fleetwoodrv.com](http://www.fleetwoodrv.com) or contact your local Fleetwood dealer. Prices, materials, design and specifications are subject to change without notice. All weights, fuel, liquid capacities and dimensions are approximate. Fleetwood has designed its recreational vehicles to provide a variety of uses for customers. Each vehicle features optimal seating, sleeping, storage and fluid capacities. The user is responsible for selecting the proper combination of loads (i.e.: equipment, fluids, cargo, etc.) to ensure that the vehicle's capacities are not exceeded.

Your local Fleetwood dealer is:

