

DOLPHIN



1990 MICRO-MINI
MOTORHOMES



The Best Travel Plans Begin With Dolphin.

Richly appointed, thoroughly engineered and solidly built, each Dolphin motorhome is the result of more than a quarter century of experience and quality. National RV, manufacturer of the industry's first and foremost micro-minis, has built in excellence at every turn. Equally important, we've made Dolphin very affordable by combining a surprisingly reasonable purchase price with economical operating costs that assure value down the road. Fact is, previously owned Dolphins command the highest resale in their class.

One look inside, and you'll start to see why as you marvel at the interior richness and spaciousness. Luxury abounds, highlighted by designer quality draperies, fabrics and deep pile carpeting. And the interiors are as roomy as they are attractive. Spacious Dolphin floor plans provide the exceptional headroom normally associated with much larger units, wide-open galley, and generously sized aisles. And each Dolphin is completely self-contained with a fully-equipped bath, plus accommodations to sleep four in comfort.

Check payload capacities, and you'll discover another important Dolphin advantage. With a Dolphin, you can pack more with the confidence that you're not overloading your motorhome.



Even at fully loaded capacity, your Dolphin will travel comfortably, handle right, and deliver plenty of power with its fuel-injected Toyota engine.

Yes, Dolphin is a pure pleasure to drive. This nimble, responsive compact is easy to maneuver, even in tight spots. On the highway, the 150 horsepower V6 engine pulls hills with ease and delivers the power you need to pass with confidence. Contributing to your driving ease are a wealth of standard features including cruise control, tilt steering wheel, and an automatic/over-drive transmission to save

on gas. A streamlined, wind-cutting front end further contributes to exceptional performance and boosts fuel economy in the process.

In short, Dolphin has everything you want in a motorhome—well appointed interiors, self-contained convenience, exceptional driveability, and enduring value. You name it, and you get it with Dolphin!

Ask any of our 20,000 happy Dolphin owners what a difference National RV quality can make. Then see your authorized dealer for a personal tour of our four exciting models. One's bound to be a perfect fit with your travel plans!



DOLPHIN



900

Step into one of the most pleasant motorhomes of Dolphin's line — the exciting model 900.

From the moment you enter, you're sure to feel right at home. Comfortable seating and sleeping areas are all around you.

Enjoy conversation on a large sofa that just invites you to stretch out. And opposite the sofa

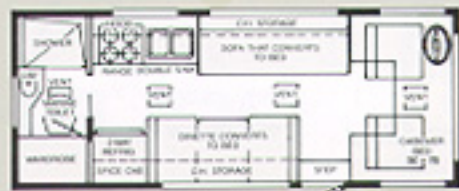
is additional seating in the form of a dinette with a large table — or you can select the option of a pair of barrel chairs. There's also plenty of sleeping accommodations. In addition to the overhead bed, both the sofa and dinette convert into beds.

Surrounded by windows, you'll really appreciate the open-air feeling and can experience

the great outdoors. Yes, here you'll have a shower and all the storage space you need.



MODEL 900
Rear Bath



MODEL 500
Rear Dinette



outdoors even when cozily inside
are all the conveniences of home.
d a fully carpeted rear bath with
vanity and large wardrobe. Typical
lphin models, the 900 has loads of
space for food, clothing, and your
belongings.



*The powerful 150 HP fuel-injected
V6 engine is a pure pleasure to drive.
And the fuel-saving automatic over-
drive transmission will keep your
pit stops few and far between.*

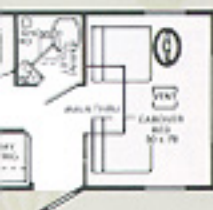
500

Experience delightful dining in this unique
Dolphin motorhome. Your special booth is
reserved, and what a view through the large
tinted windows that surround you! In the even-
ing, this area converts into a queen size bed for
comfortable sleeping on a 5" thick mattress.
Drapes and sheers on the windows keep out
the light to assure your total privacy. Also, two
more in your party can bed down above the
cab on a 50" x 78" mattress.

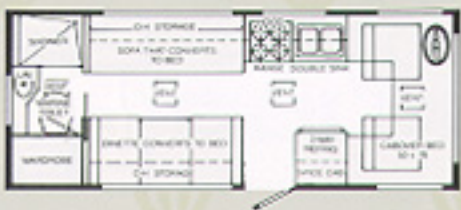


800

Here, you're welcomed into a cheery kitchen,
with a conversation area off to the side. You'll
enjoy the sofa/bed across from the dinette area
that features a large table. You'll also appreciate
the spaciousness and amenities the rear bath
offers. Its separate shower, vanity and ward-
robe make you feel right at home. And as an
option if you so choose, you can replace the
dinette area with barrel chairs and a compan-
ion round table.



MODEL 800
Front Kitchen



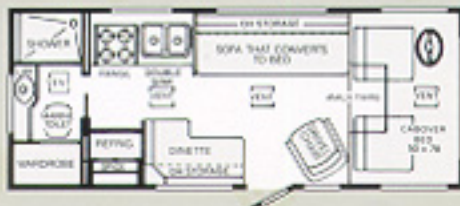
400

Once inside the 400, you're greeted by an L-shaped dinette that you'll find ideal for entertaining friends or just plain relaxing. If you'd like, you can set up two tables to create conversation areas. The one by, the dinette is shown here, and a second table can be placed in front of the sofa.

The 400 is all-around comfortable with two beds — one's the convertible sofa and the other is a full-size mattress over the cab.



MODEL 400
L-Shaped Dinette



Specifications

CAB & CHASSIS

400 500 800 900

Toyota 6,000 lbs. GVW w/137" Wheelbase	•	•	•	•
3 Ltr. V6 (150 HP) Fuel Inj. Engine	•	•	•	•
Automatic or 5-Speed Transmission	•	•	•	•
Transmission Oil Cooler (Autom. Transmission Only)	•	•	•	•
Tilt Steering Wheel	•	•	•	•
Cruise Control	•	•	•	•
All Wheels Interchangeable	•	•	•	•
Spare Tire and Wheel	•	•	•	•
Bucket Seats w/Custom Upholstery	•	•	•	•
Hose Carrying Bumper w/10' Sewer Drain Hose	•	•	•	•
Heavy Duty Springs	•	•	•	•
Adjustable Air Suspension	•	•	•	•
Dual Rear Wheels	•	•	•	•
Dual Head Rear View Mirrors	•	•	•	•
Large Radiator for Extra Cooling	•	•	•	•

GALLEY

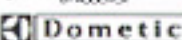
4 Burner Range w/Oven	•	•	•	•
Range Hood w/Fan & Light	•	•	•	•
4 Cu. Ft. Combination Gas/LPG/110V Refrig. (Dometic)	•	•	•	•
Stainless Steel Double Sink	•	•	•	•

INTERIOR FEATURES

Nylon Carpeted Throughout w/Pad	•	•	•	•
5" Laminated Foam Cushions and Mattress	•	•	•	•
Mini Blinds on Windows	•	•	•	•
Wooden Drawers on Steel Guides w/Travel Locks	•	•	•	•
Low Voltage Clock	•	•	•	•
Aromatic Cedar Wardrobe	•	•	•	•
Separate Shower Area	•	•	•	•
Wash Basin (Lavatory)	•	•	•	•
Power Vent In Bath	•	•	•	•
12V Demand Water Pump	•	•	•	•
16,000 BTU Forced Air Furnace w/Thermostat	•	•	•	•
City Water Hook-Up	•	•	•	•
Low Point Drains for Winterizing	•	•	•	•

FOOTNOTES

Add 9" from roofline to overall height to allow for roof rack & ladder.
Add 12" from roof-line to overall height if equipped w/Air conditioning.
Overall length is from front bumper to back bumper. Due to continual product improvement, we reserve the right to change materials, colors, specifications, and prices at any time, without notification.



EXTERIOR FEATURES

400 500 800 900

Roof Rack and Ladder	•	•	•	•
Large Storage Compartment	•	•	•	•
Roof Vents	•	•	•	•
Large Tinted Radius Corner Windows	•	•	•	•

ELECTRICAL

12 Volt Interior Lighting	•	•	•	•
Door Entrance Light	•	•	•	•
Systems Monitor Panel	•	•	•	•
Pre-Wired for Speakers	•	•	•	•
Cable TV Hook-Up	•	•	•	•
Dual Batteries	•	•	•	•
110 to 12V Conv. w/Battery Charger & 25' Power Cord	•	•	•	•
Electrical Control Centralized Breakers & Fusing	•	•	•	•

OPTIONAL EQUIPMENT

Roof Mounted Air Conditioner	•	•	•	•
Cab Dash Air Conditioning	•	•	•	•
AM/FM Stereo w/Cassette	•	•	•	•

CONSTRUCTION FEATURES

Insulated Floor with Polymax Underbelly	•	•	•	•
Steel Reinforced Construction	•	•	•	•
Fiberglass Laminated Sidewalls	•	•	•	•
Block Foam Insulation in Roof, Sidewalls, Back & Fk.	•	•	•	•
Tapered Roof for Proper Drainage	•	•	•	•
Reinforced & Wired for Future Air Conditioner Install.	•	•	•	•

CAPACITIES & DIMENSIONS

Overall Length	21'7"	21'4"	21'7"	21'7"
Overall Width	82"	82"	82"	82"
Overall Height	8'9"	8'9"	8'9"	8'9"
Fuel Capacity (Gallons)	17.2	17.2	17.2	17.2
Fast Recovery Water Heater (Gallons)	6	6	6	6
Propane Tank w/Sight Gauge (Gallons)	5	5	5	5
Waste Holding Tank (Gallons)	19	20	19	19
Gray Water Waste Holding Tank (Gallons)	17.5	18	17.5	17.5
Fresh Water Tank (Gallons)	17	17	17	17



NATIONAL RV INC.

3411 North Perris Boulevard • Perris, CA 92370 • (714) 943-6007