



# Terra

Live it up.



TERRA-Class A Gas-2006



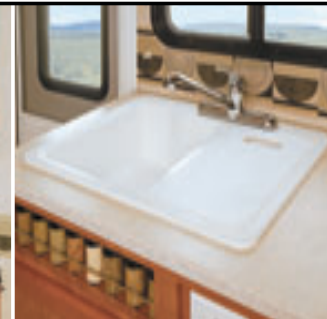
LIFE SHOULD NEVER GO  
UNREWARDED. TREAT YOURSELF  
TO AN ADVENTURE AND  
NEVER LOOK BACK. THE RIDE OF  
YOUR LIFE IS ABOUT  
TO BEGIN. HOLD ON TIGHT.



## All This Room

You'll be pleasantly surprised by all the room Terra provides thanks to its well designed floor plan layouts. It's roominess is maximized with features like a spacious dinette that comfortably seats four and

large dinette window for a great view of your surroundings. You'll also enjoy inviting Flexsteel® furniture with a lifetime warranty on the frame, and full extension drawer guides, giving you full access to every drawer.



**TERRA'S GALLEY** makes the best use of space so preparing a meal on the go is always convenient. Take advantage of the functional, folding countertop extension providing you more surface area in an instant. You'll also enjoy the convenience of an integrated spice rack, durable wood drawer construction, antique brass finished hardware, 3-burner cook top and the optional convection microwave for quick meals.

**THE LARGE DOUBLE SINK** features a single lever faucet making for quick and easy clean up. Sink lids provide additional countertop space.

**THE POTS & PANS DRAWER** is specifically designed to easily access and store your large cookware.

**THE 8 CU. FT. DOMETIC® REFRIGERATOR AND PANTRY** provide great room to store your perishable and non-perishable items.



*Terra 29J shown in Mossy interior decor  
with Windsor Birch wood finish.*

## Comfortable Convenience

You should never have to sacrifice comfort or convenience on the road, and now you don't have to. Terra's bedroom boasts a spacious floor plan layout, giving you plenty of room to wind down after an action packed day. You'll enjoy

an inviting innerspring, queen size mattress always making it easy to catch some Z's while you take advantage of features like the optional day/night pleated shades, making it easy to sleep peacefully anytime.



**THE BEDROOM WARDROBE** accommodates full-size hangers and features plenty of space to hang garments and ample room for shoe storage.



**THE SHOWER WITH SKYLIGHT** features a retractable hand held shower head with water saver to conserve water while dry camping, and integrated shelves are provided for storing soap and shampoo.



**INTEGRATED TOWEL RACKS** are the perfect place to hang towels for drying, just like home.



**TERRA'S BATHROOM** features a residential sized medicine cabinet and sink, drawer storage for toiletries, integrated towel racks for your convenience, three bulb vanity light for abundant lighting, a marine toilet with tissue holder and a power bath vent for fresh air ventilation.



**OVER-THE-BED STORAGE** adds elegance and gives you ample room to store additional bedding or towels.

**THE BEDROOM TV SHELF** provides park cable, 12V & 120V outlets (TV not included).

**TUFF-COAT® EXTERIOR FIBERGLASS SIDEWALLS** are a seamless, one piece fiberglass composite that resists UV rays, cracks and impacts.

**THE ROOF LADDER** makes it easy to access the roof for cleaning or maintenance.



**THE REAR FUEL FILL** is easy to fill up no matter what side of the pump you're on (most models).

**5,000 LB. TOWING CAPACITY†** allows you to tow a variety of toys.

**EXTERIOR AWNING** is standard and provides great protection from the weather, so you can enjoy your surroundings rain or shine.



**OUR TUFF-PLY ROOF** is UV resistant, durable, easy to clean, and doesn't scratch like many competitors' fiberglass or aluminum roofs.

**THE REDESIGNED FRONT CAP** is all new, adding to Terra's curb appeal and style.

**ONAN® 4.0KW MICRO QUIET GENERATOR** minimizes campground noise and runs very quietly compared to other generators.

†The chassis manufacturer recommends the installation of a supplemental brake control system to activate the brakes on the vehicle or trailer you are towing.

Vehicle shown in Mossy exterior graphics.



**THE ENTERTAINMENT CENTER** is redesigned for '06, featuring an amazing 20" flat screen TV that is mounted in the front overhead instead of below in the dash. This makes for improved TV viewing and a spacious driver's area.



**THE DRIVER'S AREA** features tilt wheel steering, easy to read gauges, an AM/FM radio with CD player (Sirius® satellite radio ready), double swivel sun visors with map pockets and driver/passenger captain's chairs with reclining back and side controls.



**THE 4-POINT AUTOMATIC LEVELING SYSTEM** levels the entire motor home if you are camped or parked on an uneven surface. (optional on select models)

**THE SYSTEM MONITOR PANEL** provides a central place to conveniently check all of your holding tank levels.



**PASS-THROUGH STORAGE** is an excellent feature that allows you to conveniently store oversized items (available on select models).

THREE EXTERIORS. THREE INTERIORS. THE CHOICE IS YOURS.

For '06, choose from three standard exterior graphic packages with color coordinated interior fabric motifs.

TERRA EXTERIOR/INTERIOR COLOR CHOICES



BLUE DUSK

Living/Dining Room

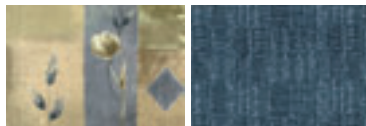


Sofa Bed & Dinette Cushions

Swivel Chair & Throw Pillow

Driver/Front Passenger Bucket Seats

Bedroom



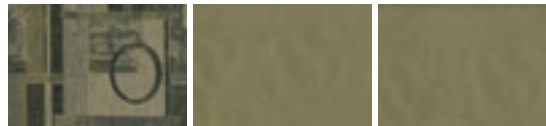
Bedsread

Pillow Shams



MOSSY

Living/Dining Room



Sofa Bed & Dinette Cushions

Swivel Chair & Throw Pillow

Driver/Front Passenger Bucket Seats

Bedroom



Bedsread

Pillow Shams



FREESTYLE

Living/Dining Room

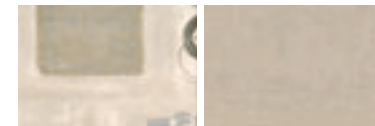


Sofa Bed & Dinette Cushions

Swivel Chair & Throw Pillow

Driver/Front Passenger Bucket Seats

Bedroom



Bedsread

Pillow Shams

INTERIOR WOOD FINISH



Windsor Birch

## What Drives You?

Maybe it's feeling like you're the only one on Earth. Perhaps it's the unique sense of closeness with the great outdoors. Or, it might be the joy that comes from spending quality time with family and friends. Whatever the reason, we know that you have a strong drive to experience everything that comes with spending time on the road. And for more than 50 years, we've shared that passion with you. Because we're RV enthusiasts ourselves, you can see our passion in the vehicles we design and build. Own a Fleetwood, and you'll feel like you're not just traveling, but embarking on an experience unlike any other. Set your own course for adventure and get out there and explore the world around you. Once you do, you'll see what it is that drives us — it's you.



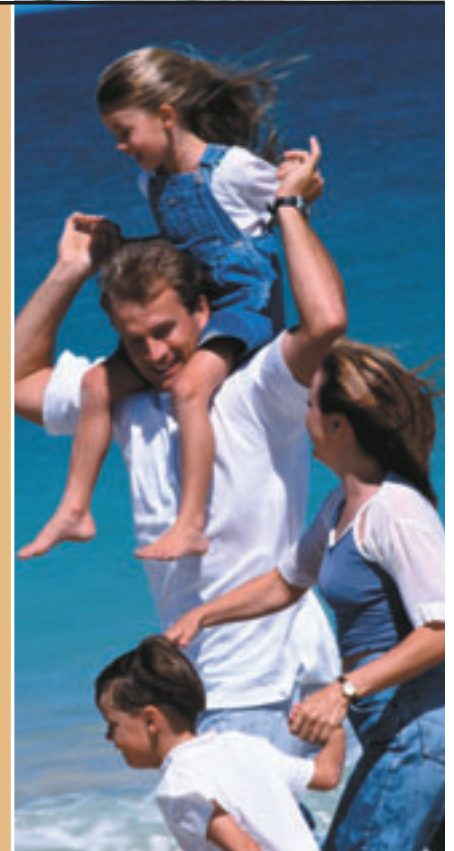
**RV OWNERCARE\*** is a limited one-year/15,000-mile coach warranty and three-year/50,000-mile structural warranty, whichever occurs first, and it is fully transferable for the first 12 months. RV OWNERCARE is one of the RV industry's most comprehensive programs and includes systems, appliances, components and construction, with no deductible and no service charge. RV OWNERCARE coverage is provided from a company that will be around in the future to service your needs. See your nearest Fleetwood dealer for a full explanation of benefits and restrictions.

**FLEETWOOD TRAVELCADE CLUB** As a Fleetwood owner, you're eligible to become a member of our owners' group, Fleetwood Travelcade Club. It's a perfect way to meet other Fleetwood owners who love to travel across America and share in the RV lifestyle. Call (877) 577-2560 or visit [www.fleetwood.com/clubs](http://www.fleetwood.com/clubs) to learn more and join the fun!

**FLEETWOODRV.COM** To locate a dealer near you, visit our website or call 1-800-444-4905. We can also be contacted at Fleetwood Customer Relations, P.O. Box 7638, Riverside, CA 92513-7638.

**IMPORTANT—PLEASE READ** Product information, photography and illustrations included in this publication were as accurate as possible at the time of printing. For further product information and changes, please visit our website at [www.fleetwoodrv.com](http://www.fleetwoodrv.com) or contact your local Fleetwood dealer. Prices, materials, design and specifications are subject to change without notice. All weights, fuel, liquid capacities and dimensions are approximate. Fleetwood has designed its recreational vehicles to provide a variety of uses for customers. Each vehicle features optimal seating, sleeping, storage and fluid capacities. The user is responsible for selecting the proper combination of loads (i.e.: occupants, equipment, fluids, cargo, etc.) to ensure that the vehicle's capacities are not exceeded.

Your local Fleetwood dealer is:



[www.fleetwoodrv.com](http://www.fleetwoodrv.com)

\*For complete info see your Fleetwood dealer. © 2005. Fleetwood Enterprises, Inc. Printed in the USA. Inventory control number TRA06B1 7/05.

**treadlightly!**  
LEAVING A GOOD IMPRESSION

