



Pace Arrow[®] Vision

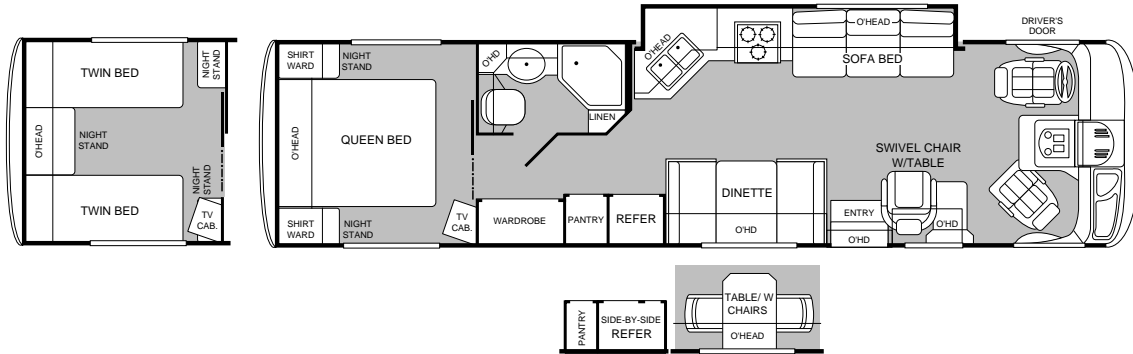
FLEETWOOD[®] RV

If the lap of luxury is one of your destinations, you've arrived.

Life on the road has never been more appealing than in the new Pace Arrow Vision. For extended weekend excursions or long-term explorations, Pace Arrow Vision defines everything you have come to expect in sophisticated style and elegance without compromising an ounce of performance. At Fleetwood, we know you wouldn't have it any other way. That's why we've built Pace Arrow Vision to outperform every other Class A motor coach in terms of quality, refinement, and luxury. But we didn't stop there. Fleetwood's 50 years has taught us a thing or two about what the discriminating RVer is looking for in terms of innovative design and long-lasting value. So we set out to distinguish Pace Arrow Vision from the competition by increasing even its superior standards—advanced construction, sleek automotive styling, practical floor plans and elegant interiors. The result is the motor home that has since become the number one selling high-line gasoline coach in the country. In other words, we reached our destination. Now you can reach all of yours.*

*According to Statistical Survey Data January – December 1998 C498

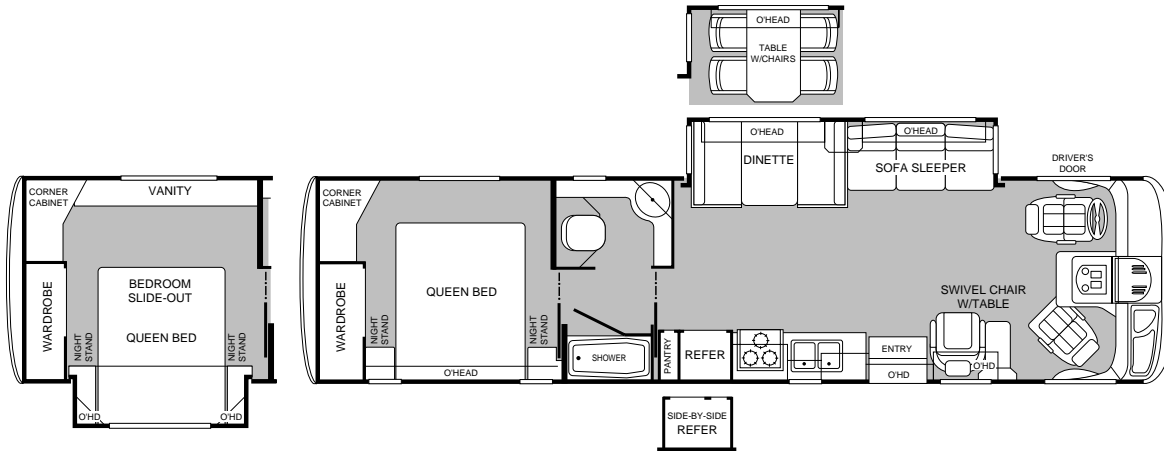
2000 Pace Arrow Vision Floor Plans



MODEL 34C

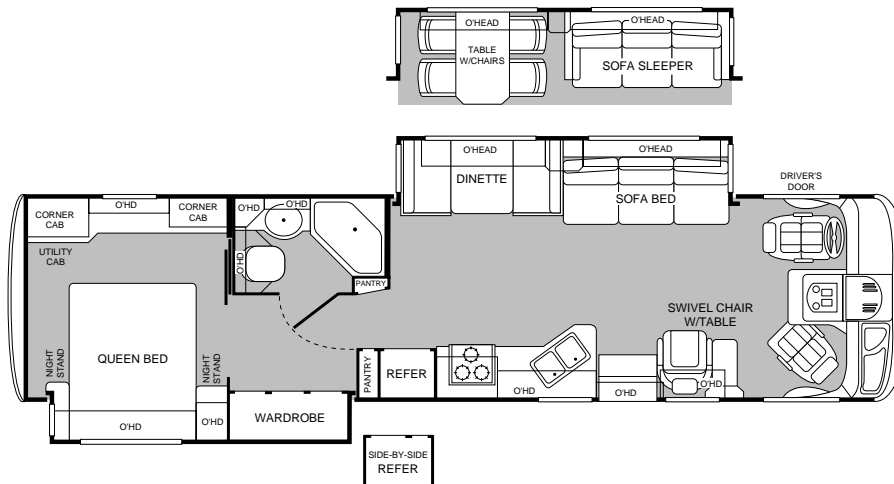
- Driver's Side Door
- Galley Slide-Out
- Swivel Chair with Table
- Dinette or Optional Table with Chairs
- Optional Dometic® Side-by-Side Refrigerator
- Queen Bed or Optional Twin Beds
- Fully Enclosed Bathroom

MODEL 34N

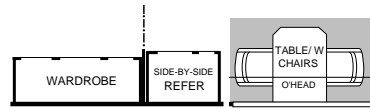
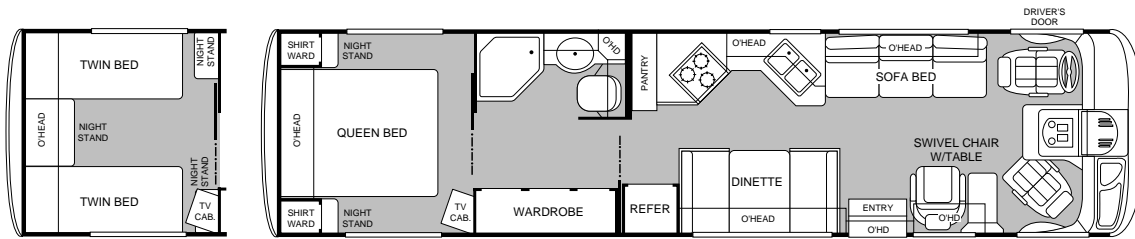


- Driver's Side Door
- Living Room Slide-Out
- Dinette or Optional Table with Chairs
- Swivel Chair with Table
- Optional Dometic® Side-by-Side Refrigerator
- Optional Bedroom Slide-Out with Vanity

MODEL 35R

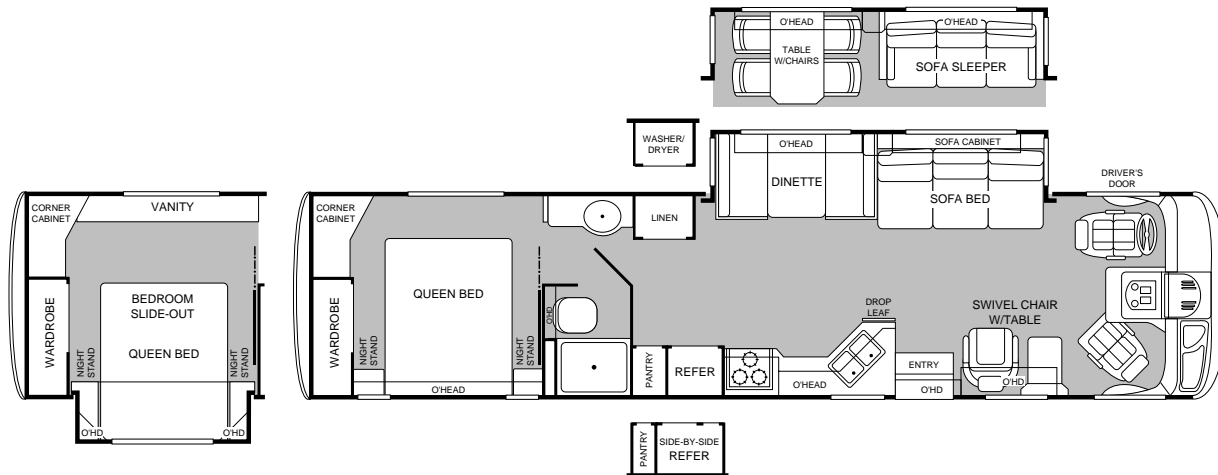


- Driver's Side Door
- Dinette or Optional Table with Chairs
- Living Room Slide-Out
- Swivel Chair with Table
- Fully Enclosed Bathroom
- Bedroom/Wardrobe Slide-Out
- 20" Panasonic® TV in Bedroom



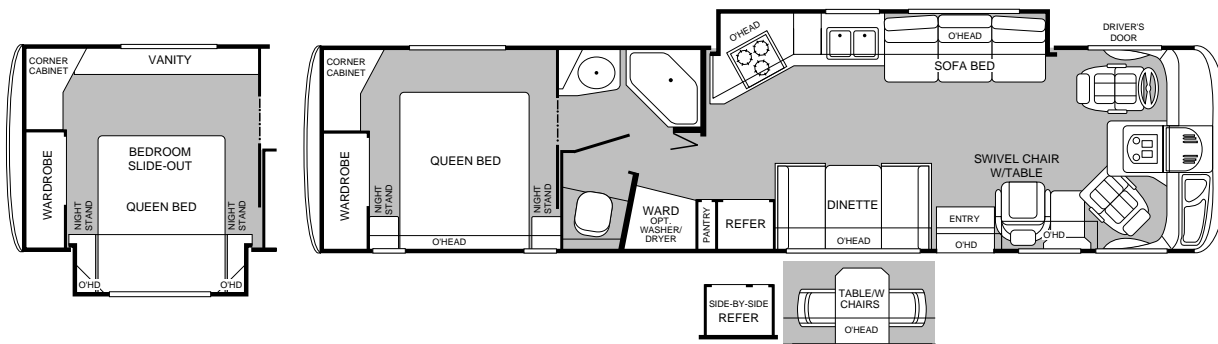
MODEL 35W

- Driver's Side Door
- Dinette or Optional Table with Chairs
- Swivel Chair with Table
- U-Shaped Kitchen
- Optional Dometic® Side-by-Side Refrigerator
- Queen Bed or Optional Twin Beds
- Extra Large Wardrobe



MODEL 36B

- Driver's Side Door
- Swivel Chair with Table
- Living Room Slide-Out
- Dinette or Optional Table with Chairs
- Optional Bedroom Slide-Out with Vanity
- Optional Dometic® Side-by-Side Refrigerator
- Optional Washer/Dryer



MODEL 36Z

- Driver's Side Door
- Galley Slide-Out
- Dinette or Optional Table with Chairs
- Swivel Chair with Table
- Optional Dometic® Side-by-Side Refrigerator
- Optional Washer/Dryer
- Optional Bedroom Slide-Out with Vanity
- Private Toilet

2000 Pace Arrow Vision Standard Features

EXTERIOR AUTOMOTIVE

Large, Curved Aerodynamic Windshield
Undercoating
Stainless-Steel Wheel Simulators
Mud Flaps
Underhood Utility Light
Steel Surface on Bulkhead
Trailer Hitch with 4-point Electrical Hook-Up
Halogen Headlights
Driving Lights
Rear Vision Camera
Third Brake Light
Docking Lights
Single Motor Windshield Wipers with Wet Arm

INTERIOR AUTOMOTIVE

Intermittent Wiper Control
Double Swivel Sun Visors with Map Pockets
Driver/Passenger Side Window Shade
Engine Cover Convenience Tray
Driver's Door with Power Window Lift
Cruise Control
Low Profile Engine Cover
Radio with Cassette AM/FM/MX—Electronic Tuning
Auxiliary Start Circuit
Battery Disconnect System
Auto A/C Heater Combo
Radio Switch—Main/Auxiliary
Soft Surface Automotive Dash
Computer Workstation in Dash
Sculptured Driver/Passenger Side Panels
Tilt Steering Wheel
Driver/Passenger Captain's Chairs
with Reclining Back/Slide Controls
Dash Fans
3-Point Seat Belts on Driver/Passenger Seats

EXTERIOR

Fiberglass Front/Rear Cap
One-Piece, Swing-Down Engine Access Door
Fiberglass Front Quarter Panels
Fiberglass Rear Wheel Well Trim
Aerodynamic Styling
Entry Door with Deadbolt Latch
Slider Windows Throughout
Aluminum Front Grille
Pace Arrow Vision in Chrome Finish Logo Badging
Utility Compartment with Exterior Shower
Roof Ladder
Exterior Assist Handle
Heated Remote Rear View Mirrors
Park Cable Receptacle
Awning Rail/Drip Molding (Both Sides)
Power Entry Step
Porch Light
3 Colorway Graphics to Match Decor
Lower Body Accent Paint

INTERIOR

3 Interior Decors
Woven Jacquard Feature Fabrics
Skylight in Tub/Shower
Oak Wood Grain
Wall-to-Wall Nylon Carpet with Carpet Pad
Vinyl Floor Covering—Bath Only
Wood Drawers
Roller Guide Drawer Slides with Transit Ship Locks
Radius Corner Cabinetry
Brass Finished Cabinet Hardware
Driver/Passenger & Lounge Reclining Bucket Seats
Mini Blinds in Galley (Metal)
Bedsprad with Decor Pillows
Deluxe Pillow-Top Innerspring Mattress
Oak Cabinet Doors & Drawers
Corian® Galley Countertops
Crown Molding
Slide-out Pantries with Transit Locks
Oak Plank Flooring in Galley
Headboard with Beveled Mirrors
Beveled Mirrors
Slide-Out Dinette Bins with Locks
Cedar Lining in Wardrobe
Window Coverings—Day/Night Shades
Wainscot Paneling in Bedroom
Oak Bath Door Trims
Oak Wood Trim Table Tops
Trash Basket in Galley
Molded Tub/Shower ABS with One-Piece Enclosure
Bright Brass Bath Accessories
Residential Seat Styling
Entry Rail (Oak & Brass)
Oak Raised Panel Overhead Cabinet Doors
Oak Flat Panel Base Cabinet Doors
Adjustable Cabinet Shelves (Selected Cabinets)
Sink Cutting Board
Solid Divider Doors
Large, Double Stainless-Steel Sink

BODY STRUCTURE

Vacubond Upper/Lower Floor
Vacubond Walls w/Smooth, High-Gloss
Exterior Fiberglass
Aluminum Wall/Ceiling Framing
Interlocking Aluminum Extrusions
Radiused Roof with Ducted A/C
Rubber Roof
Power Platform

PLATFORM CONSTRUCTION

Basement Floor Configuration
Heated Water & Holding Tank Compartments
Polyethylene Luggage Compartment Boxes
Paco Beams
Steel Outriggers
Box Vibration Isolators

APPLIANCES

Front Panasonic® 20" TV with Lift
Smoke Detector
LP Detector
CO Detector
6-Gallon, Quick-Recovery Water Heater with D.S.I.
22" 3-Burner, High-Output Cook Top with Oven
Light/Power Range Hood & Monitor Panel
Folding Range Cover—Flush Mount Solid Surface Top
Dual Roof A/C—High Efficiency with Solar Panel
Water Heater Bypass
Porcelain Toilet with Water Saver
Toilet Tank "Sani-flush" System
8-cu.ft. Dometic® Double Door Refrigerator
Single-Lever Galley Faucet
Water Filter with Faucet
Demand Water Pump with Filter
Power Bath Vent
TV Antenna
Fantastic® Power Roof Vent
Fire Extinguisher
Telephone Jack
Rear Speakers in Bedroom

INTERIOR LIGHTING

Wardrobe Lighting
Chandelier
Fluorescent Ceiling with Dual Bulb
Decor Lighting
Incandescent Lighting
Wall Sconces
Make-Up Lights in Bath

ELECTRICAL

Patio Receptacle
120V/12V AC/DC Converter Central Electrical Panel
120V/12V Wire Raceway
Water Pump Switch
5.5kW Onan® Generator
30-amp Service
Wall Switches
ECC Climate Control
Dual 6V/Deep-Cycle 218-amp House Batteries
TV/VCR Ready

EXTERIOR STORAGE

Insulated Luggage Doors
Single Paddle/Metal Latches
Continuous One-Piece Bulb Seal
Hidden Stainless-Steel Latch Rods
Gas Lift Strut Supports—Two Struts Per Door
Lighted Compartments
Aluminum Seal Frames
Pass-Through Storage

Product information and photography included in this brochure were as accurate as possible at the time of publication. For the most current product information and changes, please visit our Website at www.fleetwood.com or contact your local Fleetwood dealer. Subsequent refinements may be evident in the actual product. Prices and specifications are subject to change without notice. All fuel and liquid capacities are approximate and dimensions are nominal. Fleetwood has designed its motor home brands to provide a variety of potential uses for its customers. Each unit features the optimum storage, fluid, seating and sleeping capabilities. Though the customer enjoys this potential, he/she also has the responsibility to select the proper combinations of loads without exceeding the chassis weight capacities.

New Pace Arrow Vision Features For 2000

Our engineering may set us apart from the rest. But the things you'll notice most, when you and your family take a trip, are the top-of-the-line features. This year we have, once again, added to an already large list of features the following:

- *Optional Home Theater Sound System*
- *CB Radio Ready Option*
- *5000 lb. Hitch Capacity*
- *Toilet Tank "Sani-flush" System*
- *New Wall Switches*
- *Porcelain Toilet*
- *Improved Shower Door Latches*
- *Illuminated Porch Light Switch*

2000 Pace Arrow Vision Options

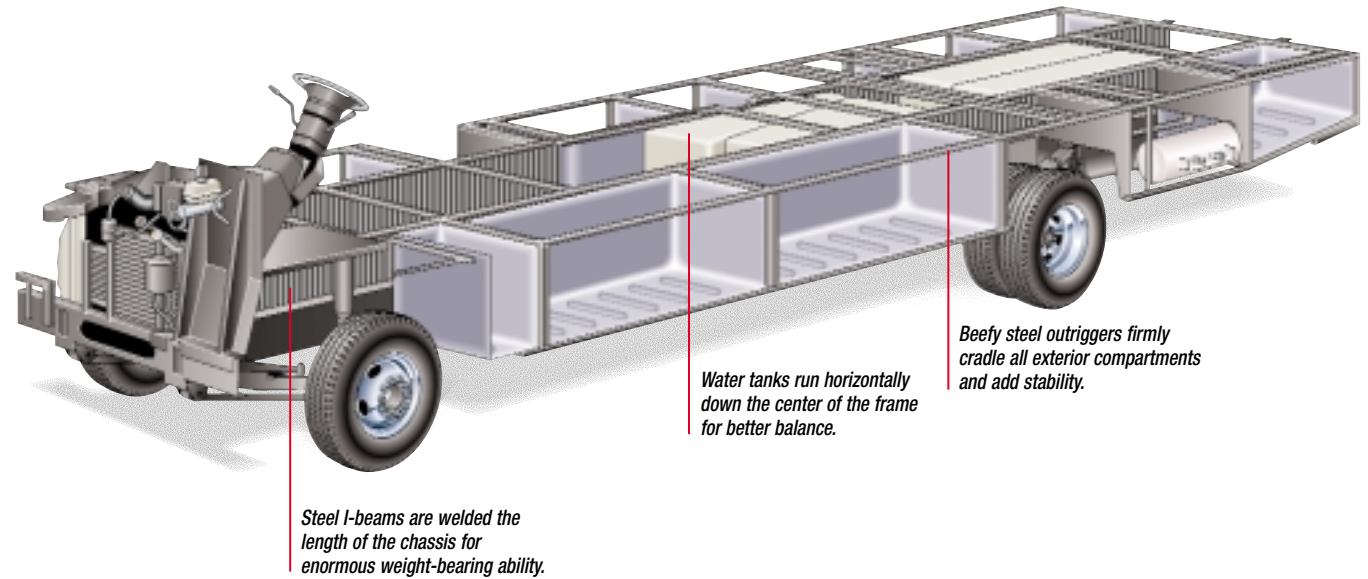
EXTERIOR AUTOMOTIVE	34C	34N	35R	35W	36B	36Z
Ford Chassis 6.8L Engine	Opt	Opt	Opt	Opt	Opt	Opt
EXTERIOR	34C	34N	35R	35W	36B	36Z
4-Pt. Manual Hydraulic Leveler—Ford	N/A	N/A	N/A	Opt	N/A	N/A
Awning - USA	Opt	Opt	Opt	Opt	Opt	Opt
Front Mask-Bra	Opt	Opt	Opt	Opt	Opt	Opt
INTERIOR AUTOMOTIVE	34C	34N	35R	35W	36B	36Z
CB Radio Ready	Opt	Opt	Opt	Opt	Opt	Opt
Stereo AM/FM with CD player	Opt	Opt	Opt	Opt	Opt	Opt
Power Driver Seat	Opt	Opt	Opt	Opt	Opt	Opt
Driver/Passenger Leather Seats w/Power Driver	Opt	Opt	Opt	Opt	Opt	Opt
APPLIANCES	34C	34N	35R	35W	36B	36Z
Dometic® Side-by-Side Refrigerator w/Ice Maker	Opt	Opt	Opt	Opt	Opt	Opt
Dometic® Double Door Refrigerator w/Ice Maker	Opt	Opt	Opt	Opt	Opt	Opt
Microwave Oven	N/A	Std	Std	Std	Std	N/A
Convection Microwave	Std	Opt	Opt	Opt	Opt	Std
CSA Convection Microwave	Opt	Opt	Opt	Opt	Opt	Opt
Washer/Dryer	N/A	N/A	N/A	N/A	Opt	Opt
Furnace 20M BTU/34M BTU (Dual)	N/A	N/A	N/A	Std	Std	Std
Furnace 20M BTU/20M BTU (Dual)	N/A	Std	Std	N/A	N/A	N/A
Furnace 34M BTU	Std	N/A	N/A	N/A	N/A	N/A
Fantastic® Power Roof Vent—Bathroom	Opt	Opt	Opt	Opt	Opt	Opt
VCR/VHS	Opt	Opt	Opt	Opt	Opt	Opt
Rear Panasonic® Television with Remote	Opt	Opt	N/A	Opt	Opt	Opt
Multiple CD Changer	Opt	Opt	Opt	Opt	Opt	Opt
DSS Manual Lift/Satellite Dish	Opt	Opt	Opt	Opt	Opt	Opt
Home Theater Sound	Opt	Opt	Opt	Opt	Opt	Opt
SLEEPING ACCOMMODATIONS (STANDARD)	34C	34N	35R	35W	36B	36Z
Sofa Bed	46"x 66"	N/A	46"x 70"	46"x 70"	46"x 70"	46"x 70"
Sofa Sleeper	N/A	51 1/2"x 71 1/2"	Opt	N/A	Opt	N/A
Dinette	39"x 74"	39"x 74"	39"x 74"	39"x 74"	39"x 74"	39"x 74"
Queen Bed	60"x 75"	60"x 80"	60"x 80"	60"x 75"	60"x 80"	60"x 80"
SLEEPING ACCOMMODATIONS (OPTIONAL)	34C	34N	35R	35W	36B	36Z
Twin Beds with Nightstand	39"x 80"	N/A	N/A	39"x 80"	N/A	N/A
Bedroom Slide-Out—Queen Bed	N/A	60"x 80"	N/A	N/A	60"x 80"	60"x 80"
Sofa Sleeper	N/A	Std	51 1/2"x 71 1/2"	N/A	51 1/2"x 71 1/2"	N/A
SLIDE-OUT	34C	34N	35R	35W	36B	36Z
Galley—Galley/Sofa	Std	N/A	N/A	N/A	N/A	Std
Living Room—Dinette/Sofa	N/A	Std	Std	N/A	Std	N/A
Free-Standing Dinette Table & Chairs	N/A	Opt	Opt	N/A	Opt	N/A
Bedroom—Queen Bed & Wardrobe	N/A	N/A	Std	N/A	N/A	N/A
INTERIOR	34C	34N	35R	35W	36B	36Z
Folding Shower Door	N/A	N/A	N/A	N/A	Std	N/A
Glass Shower Door with Bright Brass Frame	Std	Std	Std	Std	N/A	Std
Lounge Recliner	Opt	Opt	Opt	Opt	Opt	Opt
Leather Swivel Recliner	Opt	Opt	Opt	Opt	Opt	Opt
Dinette Table with Free-Standing Extension	Opt	N/A	N/A	Opt	N/A	Opt
Coffee Table	Opt	Opt	Opt	N/A	Opt	Opt
ELECTRICAL	34C	34N	35R	35W	36B	36Z
7.0 Generator—Onan® Dual A/C Ready Upgrade	Opt	Opt	Opt	Opt	Opt	Opt
CSA Package	Opt	Opt	Opt	Opt	Opt	Opt

There's no place like home—especially when you can take it with you.

Once you've boarded the new Pace Arrow Vision you may never go home again. That is, of course, if you're not already calling your Pace Arrow Vision home. Pace Arrow Vision provides the luxury, enjoyment, livability, and design enhancements that make lingering in your coach nearly irresistible. From bow to stern, every aspect of the interior is crafted precisely for your ease and comfort. A sophisticated, wrap-around instrument panel ergonomically designed for visibility and ease-of-use awaits the driver. And an elaborately-appointed living room welcomes each resident with elegant, jacquard and tapestry woven fabrics, brilliant hardwood floors and plush Dupont® carpeting with Teflon Advanced Carpet Protector. Now glance about and take note of the residential-quality window treatments for increased privacy and an intimate ambiance. A smartly-designed galley featuring oak cabinet doors, solid surface countertops, and our slide-out pantry system makes "eating in" the preferred option. With Pace Arrow Vision you'll have everything you need, whenever you need it. Looks like staying at home is starting to take on a whole new meaning.

The Power Platform Makes The Difference

Pace Arrow Vision's quality begins long before the features come on board. We begin by building on our exclusive Power Platform, with Paco Beam, a unique truss design welded together using tubular steel that's durable, strong, and dependable. The result is a quiet and nearly flawless ride, increased floor strength, and substantially more storage space below. An all-steel foundation further reduces stress loads on the sidewalls and minimizes chassis flex on uneven roads.



Water tanks run horizontally down the center of the frame for better balance.

Beefy steel outriggers firmly cradle all exterior compartments and add stability.

Steel I-beams are welded the length of the chassis for enormous weight-bearing ability.

Drawing is for illustrative purpose only to highlight aspects of motor home construction. Actual motor home design depends on model and is subject to change.

2000 Pace Arrow Vision Specifications

FORD CHASSIS	34C	34N	35R	35W	36B	36Z
Engine CID	415	415	415	415	415	415
Wheel Base	208"	208"	228"	228"	228"	228"
GVWR lbs/kgs (1)	20,500/9,299	20,500/9,299	20,500/9,299	20,500/9,299	20,500/9,299	20,500/9,299
Front GAWR lbs/kgs (2)	7,000/3,175	7,000/3,175	7,000/3,175	7,000/3,175	7,000/3,175	7,000/3,175
Rear GAWR lbs/kgs (2)	13,500/6,124	13,500/6,124	13,500/6,124	13,500/6,124	13,500/6,124	13,500/6,124
Base Weight lbs/kgs (3)	15,970/7,244	16,300/7,394	16,750/7,598	14,950/6,781	16,600/7,530	16,650/7,552
GCWR lbs/kgs (4)	25,500/11,567	25,500/11,567	25,500/11,567	25,500/11,567	25,500/11,567	25,500/11,567
Hitch Rating/Tongue Weight lbs	5,000/500	5,000/500	5,000/500	5,000/500	5,000/500	5,000/500
Hitch Rating/Tongue Weight kgs	2,268/227	2,268/227	2,268/227	2,268/227	2,268/227	2,268/227
Fuel Capacity gal/lbs	75/450	75/450	75/450	75/450	75/450	75/450
Fuel Capacity gal/kgs	75/204	75/204	75/204	75/204	75/204	75/204

DIMENSIONS	34C	34N	35R	35W	36B	36Z
Overall Length	34' 5"	34' 8"	35' 8"	35' 2"	36' 6"	36' 10"
Overall Height with A/C	11' 11"	11' 11"	11' 11"	11' 11"	11' 11"	11' 11"
Overall Width (maximum)	102"	102"	102"	102"	102"	102"
Interior Height (maximum)	79"	79"	79"	79"	79"	79"
Interior Width (maximum)	96"	96"	96"	96"	96"	96"

STORAGE CAPACITY (CU.FT.)	34C	34N	35R	35W	36B	36Z
Exterior	99	114	113	121	123	104

LIQUID CAPACITIES (GLNS/LTRS)	34C	34N	35R	35W	36B	36Z
Fresh Water	60/227	80/303	70/265	80/303	70/265	70/265
Water Heater	6/23	6/23	6/23	6/23	6/23	6/23
Body-Waste Holding	42/159	44/167	42/159	42/159	42/159	44/167
Grey-Water Holding	58/220	58/220	58/220	58/220	58/220	58/220
Appliance LPG Tank (wc/see note)	25/95	25/95	25/95	25/95	25/95	25/95

Note: Tank manufacturer's listed water capacity (wc). Actual filled LP capacity is 80% of listing due to safety shutoff required on tank.

1. **GVWR (Gross Vehicle Weight Rating):** Means the maximum permissible weight of this motor home. The GVWR is equal to or greater than the sum of the unloaded vehicle weight plus the net carrying capacity.
2. **GAWR (Gross Axle Weight Rating):** Means the maximum permissible loaded weight a specific axle is designed to carry.
3. **Base Weight:** Means the weight of the motor home without fuel, options, water, cargo, or passengers.
4. **GCWR (Gross Combination Weight Rating):** Means the value specified by the motor home manufacturer as the maximum allowable loaded weight of this motor home with its towed trailer or towed vehicle. Towing and braking capacities may differ. Refer to Fleetwood and chassis manufacturer manuals for complete information.

Pace Arrow
Vision
FLEETWOOD, RV

FLEETWOOD RV

Fleetwood Enterprises, Inc.
RV Marketing
P.O. Box 7638
Riverside, CA 92513-7638



Fleetwood
Vision
FLEETWOOD RV

Your local Fleetwood RV dealer is:

TO FIND A FLEETWOOD DEALER near you, call 24 hours a day at 1-800-444-4905 or visit our Website at www.fleetwood.com

FOR CUSTOMER ASSISTANCE, call toll free 24 hours a day at 1-800-322-8216, visit our Website, or you may write to Fleetwood Enterprises, Inc., P.O. Box 7638, Riverside, CA 92513-7638.

Product information and photography included in this brochure were as accurate as possible at the time of publication. For the most current product information and changes, please visit our Website at www.fleetwood.com or contact your local Fleetwood dealer. Subsequent refinements may be evident in the actual product. Prices and specifications are subject to change without notice. All fuel and liquid capacities are approximate and dimensions are nominal. Fleetwood has designed its motor home brands to provide a variety of potential uses for its customers. Each unit features the optimum storage, fluid, seating and sleeping capabilities. Though the customer enjoys this potential, he/she also has the responsibility to select the proper combinations of loads without exceeding the chassis weight capacities.

© 1999 Fleetwood Enterprises, Inc.

Inventory Control Number 270002/2nd Edition 12/99



This award certifies that Fleetwood has met Ford's rigid quality standards for modifying a Ford chassis.