

*Pace Arrow*<sup>®</sup>



2004

#### Explore Pace Arrow's Features and Benefits.

**84" Interior Height** — Taller ceilings add increased headroom for a residential feel and additional overhead cabinet storage.

**27" Panasonic Flat Screen TV** — Located in front overhead, the Panasonic flat screen TV reduces glare and gives a modern high-tech look to the television.

**Electric Awning** — Gives the customer the convenience of one touch operation of their awning. (Optional on select models)

**22 1/2" Wheels** — Gives the coach a high line "diesel" look while adding larger exterior storage compartments.

**Low Profile Engine Cover** — Designed with a very low profile engine cover to allow easy passage into the driver/passenger seats.

**Electric Sun Visor** — Increases convenience by allowing the driver / passenger to operate the visors while remaining seated.

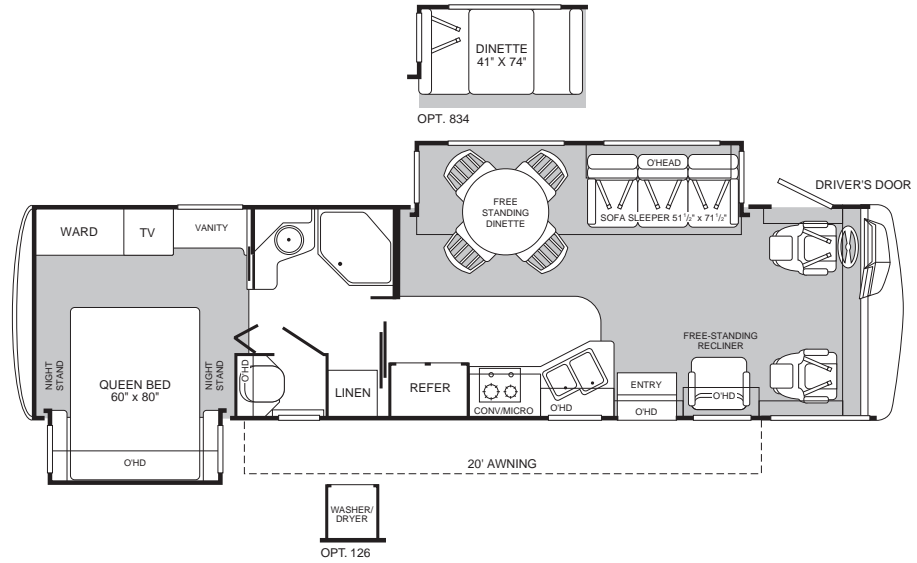
**Aluminum Extrusions** — These interlocking aluminum extrusions ensure precision mating of the sidewall to floor and sidewall to roof transitions, providing a square / level structure.

**Whole House Water Filter** — This feature filters all the water used in the coach, not just the drinking water.

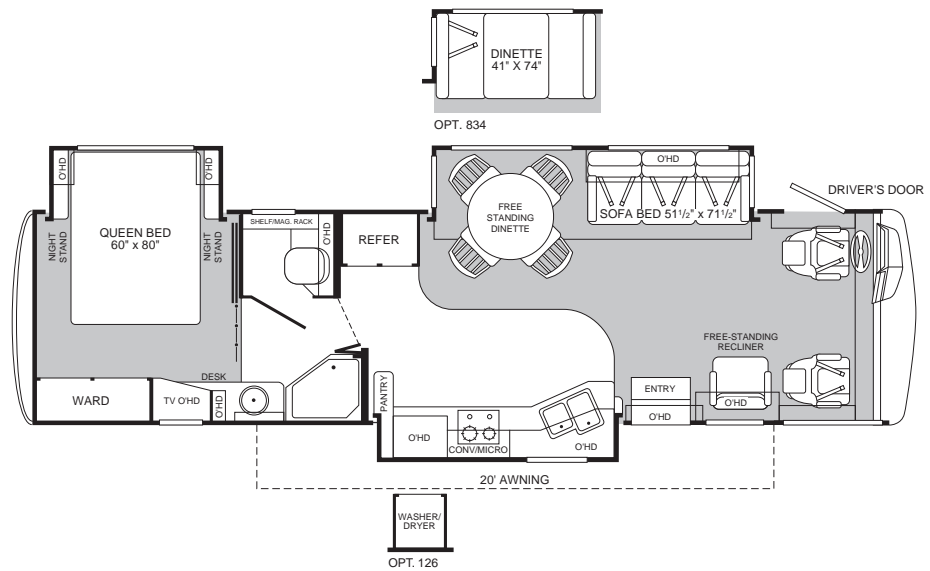
**Power Window / Driver Door** — Gives customers the luxury and convenience expected of luxury vehicles.

**By Fleetwood** — a name you know, a name you trust.

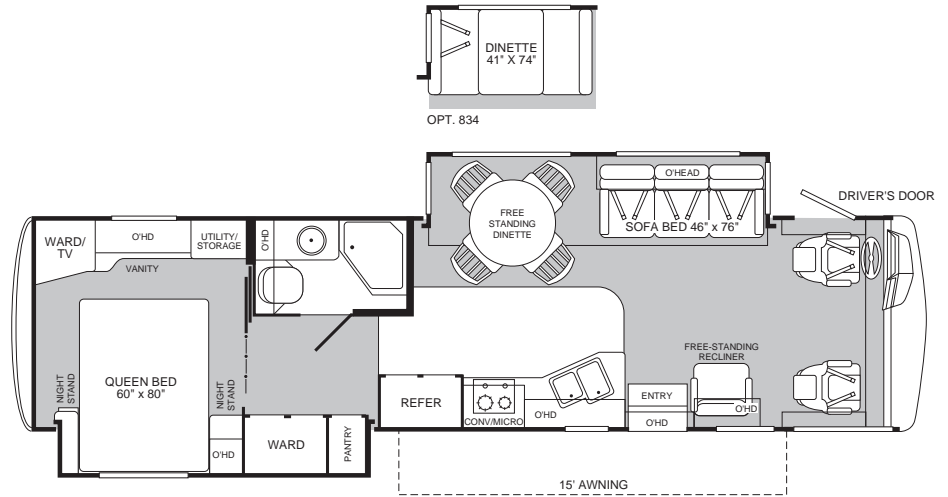
## Model 35G



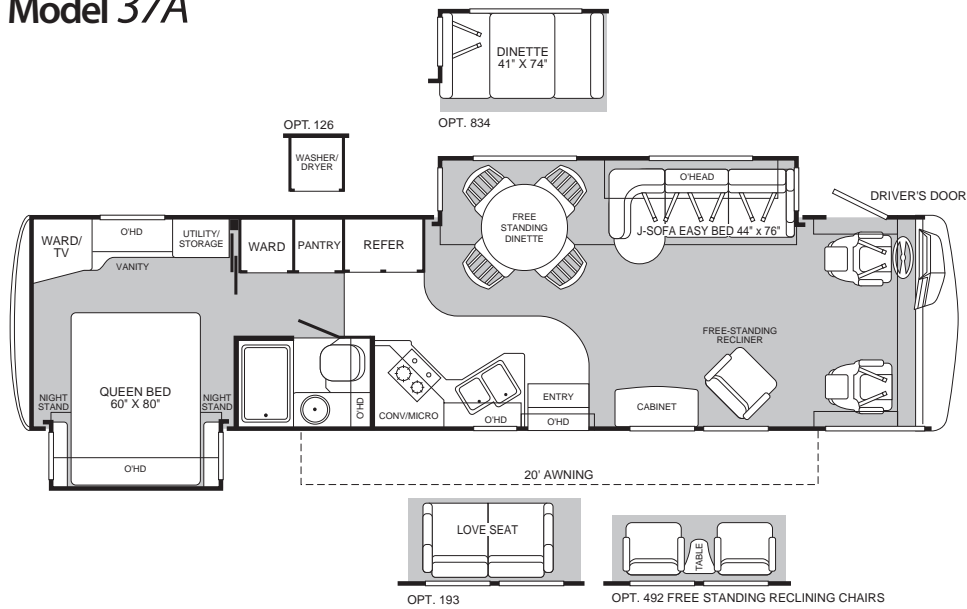
## Model 36B



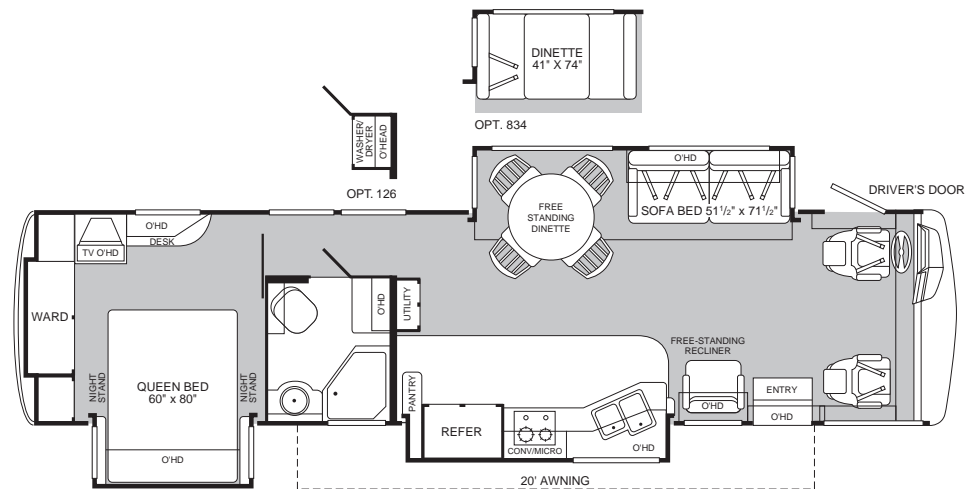
# Model 36R



# Model 37A



# Model 37C



# Standard Features

## Appliances

---

- Panasonic® 5-Disc DVD Home Theater Sound System
- Panasonic® 27" Flat Screen TV in Front Overhead
- Panasonic® 20" TV in Bedroom
- Hi-Fi VCR
- DSS Manual Lift Satellite Dish
- TV Antenna
- 2-Burner Cooktop w/Sealed Burners
- GE® Convection Oven, Stainless, 1.4 cu. ft. Capacity w/Built-in Rangehood and Light
- 12 cu. ft. Stainless Steel Dometic® Refrigerator w/Ice Maker
- Dual Roof A/C High Efficiency w/Solar Panel and Chill Grilles
- Coffeemaker
- 10-Gallon, Quick-Recovery Water Heater w/D.S.I. (Gas/Electric)
- 2 Fan-Tastic® Power Roof Vents—Galley and Bath
- Telephone Jack in Dash, Dinette and Bedroom
- Porcelain Toilet w/Water Saver
- Single-Lever Galley Faucet w/Pull Out Spray
- Full Coach Water Filter
- Soap Dispenser in Galley
- Toilet Tank San-T-Flush™ System
- Water Heater Bypass System
- Detectors/Alarms for Smoke, LP Gas, and CO
- Fire Extinguisher

## Body Structure

---

- Power Platform Construction, Longitudinal I-Beams w/Steel Outriggers
- Vacu-bond® Walls w/Smooth, High-Gloss Exterior Fiberglass
- Vacu-bond® Upper/Lower Floors
- Aluminum Interlocking Floor/Wall/Ceiling Framing
- Royal Tuff-Ply™ Roof

## Electrical

---

- 5.5kW Onan® Quiet Generator
- Centralized Monitor Panel w/Slide-Out Controls and Battery Disconnects
- 120V/12V AC/DC Converter Central Electrical Panel
- Dual 6V/Deep-Cycle 218-amp House Batteries
- 30-amp Service
- Dual Patio Receptacles
- 3-Way Water Pump Switch
- Wall Switches
- Automotive Wire Harnesses

## Exterior

---

- 4-Point Automatic Hydraulic Leveler System
- Patio Awning
- Large, Heated Remote Rear View Mirrors
- Double Kwikke® Power Entry Step w/Light
- 3 Graphic Colorways to Match Decor
- Fiberglass Front/Rear Caps
- Molded Front Rear Wheel Well Trims
- Flush Mounted Furnace and Water Heater
- Aluminum Tube Front Grille
- Awning Rail/Drip Molding (Both Sides)
- Swing-Up Engine Access Door

- Entry Door with Deadbolt Latch
- Utility Compartment w/Exterior Shower
- "Ultimate"™ Sewer Hose
- Roof Ladder
- Dual Battery Charge Control
- Park Cable Receptacle
- Accessory LP Gas Supply with Hose\*\*
- Porch Light

## Platform Construction

---

- Basement Floor Configuration
- Heated Water & Holding Tank Compartments
- Coach Vibration Isolators

## Exterior Automotive

---

- Large, Curved Aerodynamic Windshield
- Undercoating
- Stainless Steel Wheel Simulators
- Mud Flaps
- Underhood Utility Light
- Steel Surface on Bulkhead
- 5,000 lb. Trailer Hitch w/7-Point Hook-Up
- Dual Halogen Headlights
- Wrap-Around Euro Design Taillights
- Rear Vision Camera with One-Way Audio
- Single Motor Windshield Wipers w/Wet Arm

## Exterior Storage

---

- Insulated Aluminum Skin Luggage Doors
- Molded Polyethylene Storage Compartments
- Single Paddle/Latches
- One-Piece Compartment Bulb Seal
- Gas Strut Door Supports
- Lighted Compartments
- Steel Sealed Frames

## Interior

---

- Flush Floor Living Room Slide-Out
- Ultraleather™ Furniture w/Throw Pillows
- Morbern® Vinyl Ceiling, Cushioned
- Fabrica Nylon Carpet with Pad
- Armstrong® Solarian® Vinyl Floor Covering
- Freestanding Reclining Chair w/Security Bracket
- Solid Surface Galley, Lavy and Countertops
- 3-Point Front Seat Belts
- Bedspread with Deluxe Fabric Headboard
- Restonic® Deluxe Pillow Top Innerspring Mattress
- Wardrobes w/Mirrored Doors, Cedar Lining, and Wire Shelf
- Dual Glazed Slider Windows with Day/Night Shades
- Entry Assist Rail
- Engine Cover Convenience Tray
- Wood Drawers
- Radius Corner Cabinetry
- Wine Cabinet (37A Only)
- Freestanding Dinette Table with Four Chairs
- Slide-Out Dinette Bins with Optional Fixed Dinette
- Solid Wood Lavy Door
- Solid Wood Dinette Table Tops
- Alder-Stained Drawer Fronts and Raised Panel Cabinet Doors, Arched Designs, Glass Inserts in Selected Locations
- Built-In Galley Cutting/Bread Board (Selected Models)
- Ironing Board (Conveniently Slides into Galley, Stores In Wardrobe on Selected Models)

- Roller Bearing Drawer Guides
- Solid Divider Doors
- Full Extension Drawer Slides
- Brushed Chrome Finish Cabinet Hardware
- Mirrored Galley Backsplashes
- Trash Receptacle Under Sink
- Large Double Stainless Steel Galley Sink
- Skylight in Tub/Shower
- Beveled Mirror in Lavy
- Molded Color Coordinated Acrylic Shower
- Nickel Finish Bath Accessories
- Nickel Finish Metal Designer Lavy Faucet
- Single Level Shower Control, Nickel Finish, w/Slide Adjustable Shower Head and Soap Dish
- Shower Dispenser for Lotion, Shampoo, Soap, Etc.
- 4 Striking Interior Theme Decors

## Interior Automotive

---

- Dual Chrome Electric Horns
- Digital Compass and Outside Temperature Gauge
- Denso® Intermittent Wiper Controls
- ICC Switch
- Double-Swivel Sun Visors with Map Pockets
- Driver's Door with Power Window Lift
- Cruise Control
- Low Profile Engine Cover
- Dual Media Radio with AM/FM/Cassette/CD/MX-Electronic Tuning
- Tilt Steering Wheel
- Dash Fans
- Computer Workstation, Dash
- Auxiliary Start Circuit
- Denso® Auto A/C Heater Combo
- Radio Switch—Main/Auxiliary Power
- Driver/Passenger Ultraleather™ Captain's Chairs with Reclining Back/Slide Controls w/Power Driver Seat

## Interior Lighting

---

- Wardrobe Lighting
- Fluorescent Ceiling Lights with Dual Bulbs
- Decor Lighting
- Incandescent Lighting

\* The chassis manufacturer recommends the installation of a supplemental brake control system to activate the brakes on the vehicle or trailer you are towing.

\*\* CSA standards may require substitution or deletion to achieve conformance.

# Options

## Appliances

---

- Washer/Dryer (Not Available on 36R)

## Exterior Automotive

---

- CSA Package—Workhorse®
- Workhorse® Chassis 8.1L Vortex V8 Engine

## Interior

---

- Fixed Dinette w/Solid Wood Table and Ultraleather™, High Resiliency Foam Cushions

## Interior Automotive

---

- Driver/Passenger Shades w/Electronic Sun Visor
- King Dome Auto Seek Satellite Dish

Workhorse® Chassis	35G	36B	36R	37A	37C
Engine LD	8.1L	8.1L	8.1L	8.1L	8.1L
Wheelbase	228"	228"	228"	242"	242"
GVWR (lbs) (1)	22,000	22,000	22,000	22,000	22,000
Front GAWR (lbs) (2)	8,000	8,000	8,000	8,000	8,000
Rear GAWR (lbs) (2)	14,500	14,500	14,500	14,500	14,500
Base Weight (lbs) (3)	18,600	19,100	18,800	18,600	19,500
GCWR (lbs) (4)	26,000	26,000	26,000	26,000	26,000
Hitch Rating Weight (lbs)*	5,000	5,000	5,000	5,000	5,000
Tongue Weight (lbs)*	500	500	500	500	500
Fuel Capacity (gal)	75	75	75	75	75

## Dimensions and Capacities

Overall Length (5)	35' 8"	36' 2"	36' 2"	37' 8"	37' 8"
Overall Height (with A/C) (8)	12' 10"	12' 10"	12' 10"	12' 10"	12' 10"
Overall Width (maximum) (6)	102"	102"	102"	102"	102"
Interior Height (maximum)	84"	84"	84"	84"	84"
Interior Width (maximum)	96"	96"	96"	96"	96"
Fresh Water Holding Tank (gal)	80	80	80	80	80
Grey Water Holding Tank (gal)	58	58	58	58	58
Black Water Holding Tank (gal)	47	42	42	42	42
Appliance LP Gas Tank (gal) (WC) (7)	25	25	25	25	25
Water Heater Tank (gal)	10	10	10	10	10

**Liquid Weight Reference:** Water (gal) = (8.3 lbs/3.8 kgs) Fuel (gal) = (6.1 lbs/2.8 kgs) LPG (gal) = (4.2 lbs/1.9 kgs)

**Metric Conversion:** Multiply pounds x 0.453 to obtain kilograms Multiply gallons x 3.785 to obtain liters

1. GVWR (Gross Vehicle Weight Rating): Means the maximum permissible loaded weight of the motor home. The GVWR is equal to or greater than the sum of the unloaded vehicle weight plus the net carrying capacity.
  2. GAWR (Gross Axle Weight Rating): Means the maximum permissible loaded weight a specific axle is designed to carry.
  3. Base Weight: Means the estimated weight of the motor home without fuel, options, water, cargo or passengers.
  4. GCWR (Gross Combined Weight Rating): Means the value specified by the motor home manufacturer as the maximum allowable loaded weight of this motor home with its towed vehicle. Towing and braking capacities may differ. Refer to Fleetwood and chassis manufacturer manuals for complete information.
  5. Length taken from front bumper to rear bumper (excludes accessories).
  6. Excludes safety equipment and awnings.
  7. Tank Manufacturer's listed water capacity (WC). Actual LPG capacity is 80% of water listing as required by the safety code.
- \* The chassis manufacturer recommends the installation of a supplemental brake control system to activate the brakes on the vehicle or trailer you are towing.

**IMPORTANT — PLEASE READ:** Product information, photography and illustrations included in this publication were as accurate as possible at the time of printing. For further product information and changes, please visit our website at [www.fleetwoodrv.com](http://www.fleetwoodrv.com) or contact your local Fleetwood dealer. Prices, materials, design and specifications are subject to change without notice. All weights, fuel, liquid capacities and dimensions are approximate. Fleetwood has designed its recreational vehicles to provide a variety of uses for its customers. Each vehicle features optimal seating, sleeping, storage and fluid capacities. The user is responsible for selecting the proper combination of loads (i.e. occupants, equipment, fluids, cargo, etc.) to ensure that the vehicle's capacities are not exceeded.



## RV OWNERCARE...

is a limited one-year/three-year or 15,000 mile warranty, whichever occurs first, and it is fully transferable for the first 12 months.



**RV OWNERCARE** is one of the RV industry's most comprehensive programs and includes systems, appliances, components, and construction, with no deductible and no service charge.

**RV OWNERCARE** coverage is provided from a company that will be around in the future to service your needs. See your nearest Fleetwood dealer for a full explanation of benefits and restrictions.

## Club Fleetwood...

As a Fleetwood owner, you're eligible to become a member of our owners group, Club Fleetwood. It's a perfect way to meet other Fleetwood owners who love to travel to beautiful resorts and vacation spots all across America. Call (877) 577-2560 and join the fun!



## What Drives You?

Maybe it's feeling like you're the only one on Earth. Perhaps it's the unique sense of closeness with the great outdoors. Or, it might be the joy that comes from spending quality time with family and friends.

Whatever the reason, we know that you have a strong drive to experience everything that comes with spending time on the road. And for more than 50 years, we've shared that passion with you.

Because we're RV enthusiasts ourselves, you can see our passion in the vehicles we design and build. Own a Fleetwood, and you'll feel like you're not just traveling, but embarking on an experience unlike any other.

Set your own course for adventure and get out there and explore the world around you. Once you do, you'll see what it is that drives us — it's you.



Your local Fleetwood dealer is:

[www.fleetwoodrv.com](http://www.fleetwoodrv.com) Visit our website to find a dealer near you or learn more about other Fleetwood products. Or call 1-800-444-4905.



**IMPORTANT—PLEASE READ:** Product information, photography and illustrations included in this publication were as accurate as possible at the time of printing. For further product information and changes, please visit our website at [www.fleetwoodrv.com](http://www.fleetwoodrv.com) or contact your local Fleetwood dealer. Prices, materials, design and specifications are subject to change without notice. All weights, fuel, liquid capacities and dimensions are approximate. Fleetwood has designed its recreational vehicles to provide a variety of uses for its customers. Each vehicle features optimal seating, sleeping, storage and fluid capacities. The user is responsible for selecting the proper combination of loads (i.e. occupants, equipment, fluids, cargo, etc.) to ensure that the vehicle's capacities are not exceeded.