



REVOLUTION



2004

Explore Revolution's Features and Benefits.

Adjustable Dash Gauge Package, Smart Wheel, Adjustable Brake and Accelerator Pedals, Six-Way Power Driver Seat, Two Piece 50" Windshield — We can accommodate any size of person in our driver's seat comfortably. This combination of unique features makes the driving experience in the Revolution truly incredible. What better way to see the USA than from the driver's seat of a Revolution?

Keyless Entry — This feature offers two push button key fobs and additional remotes found at the passenger seat and in the bedroom. No more crawling out of bed to see if the front door is locked, just roll over and press a button!

Full Body Paint Exterior Graphics — In our "state of the art" facility we polish, buff and apply a clear coat finish. We partner with Sherwin Williams to achieve a luxurious exterior typically found on more expensive motor homes.

Freightliner Stacked Rail XC Chassis — Paired with a Cummins 350HP Diesel Engine and Side Mounted Radiator. We designed a "balanced" house to be placed on top of this chassis. This allows us to offer an incredible driving experience!

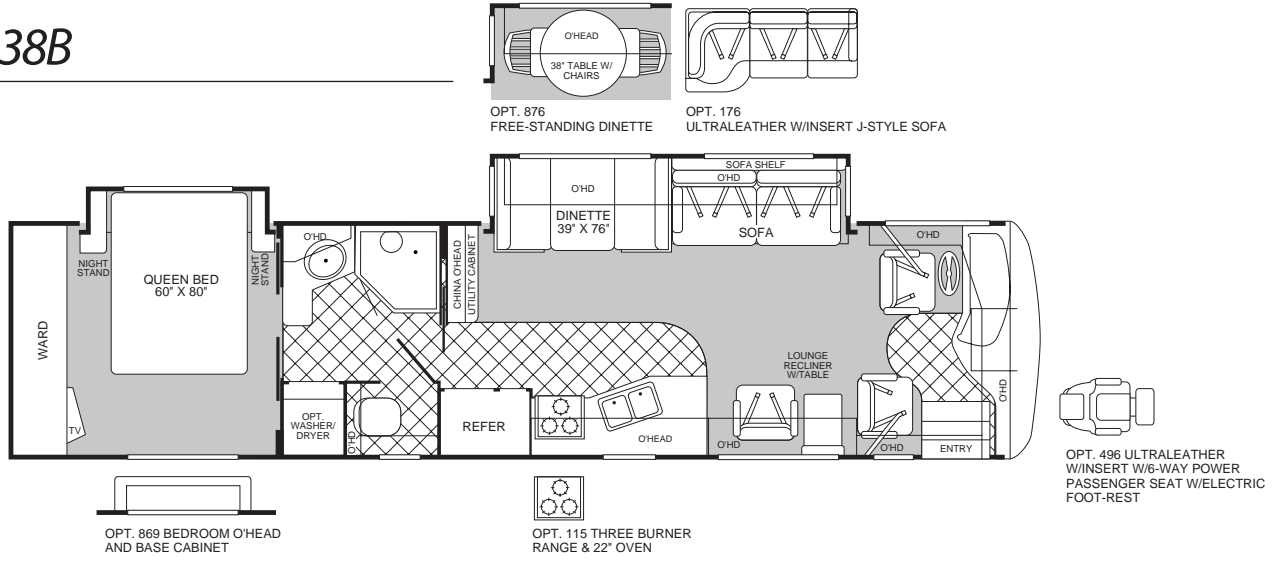
Nine Interior Decors and Eight Exteriors to Choose From — At NO additional cost to the customer. Most of the competition charges \$\$\$ to get the look we have in the Revolution.

Steel Frame, Insulated, Vacubond Sidewalls, Roof and Floors — Structural Integrity ALL around.

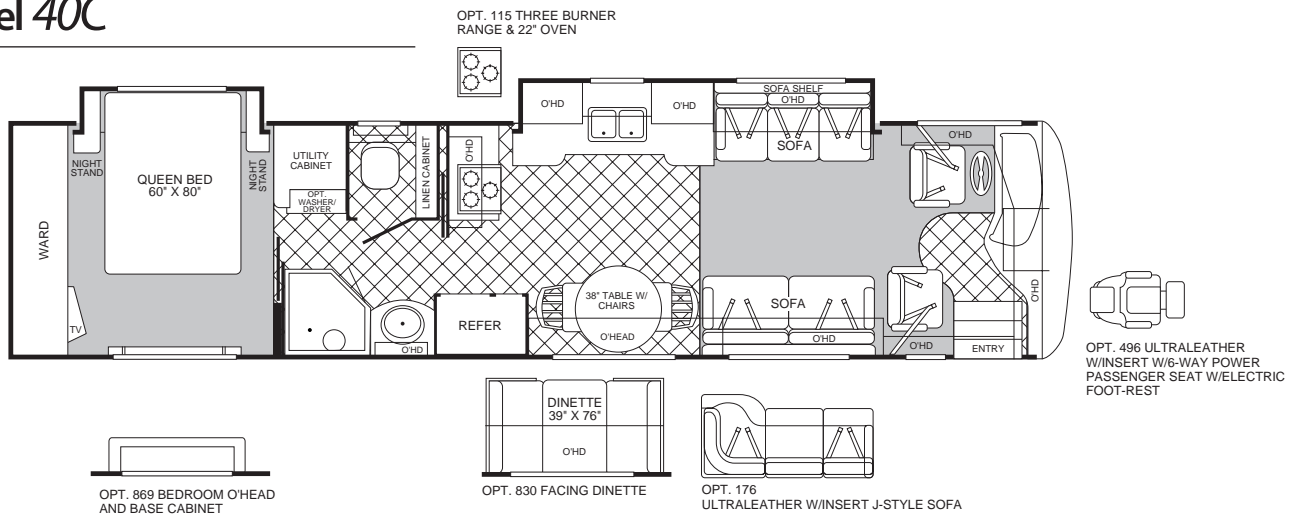
Name Brand Electronics — Including Panasonic TV's, DVD and VCR Receivers, Hughes Satellite Receiver and KVH Domed Dish. All are part of the standard audio-visual features you will find in the 2004 Revolution.

By Fleetwood — a name you know, a name you trust.

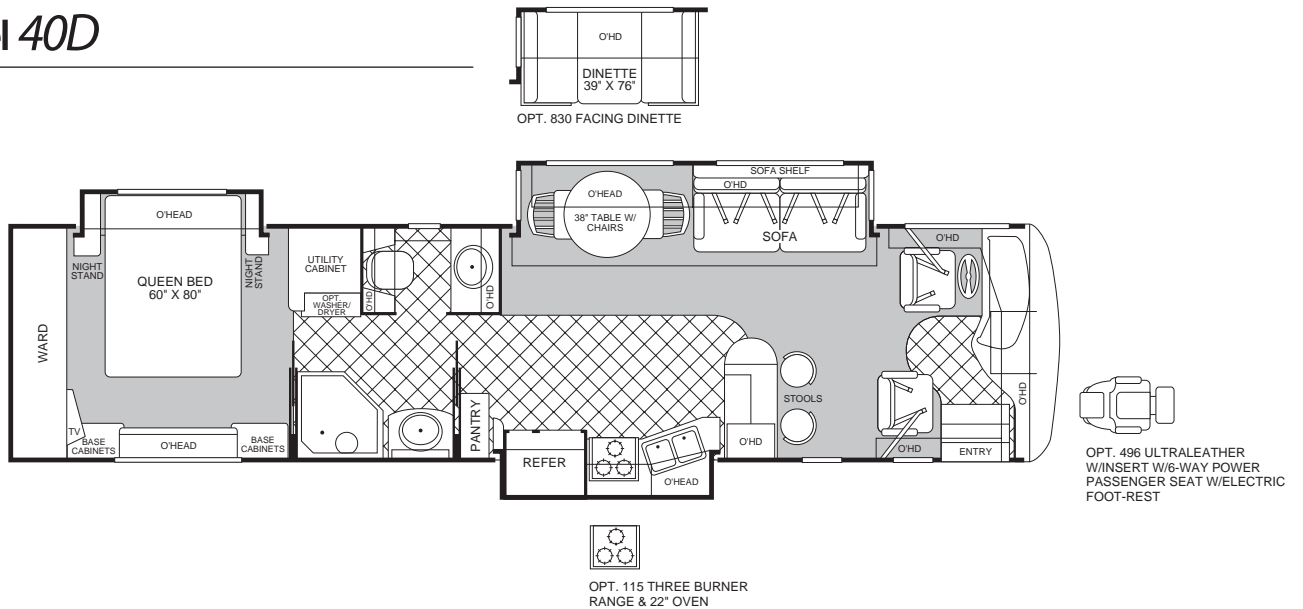
Model 38B



Model 40C



Model 40D



Standard Features

Appliances

- Norcold® 12 cu.ft. (4 Door) Refrigerator
- 3-Burner Cook-top (Sealed Burners)
- GE® Convection Microwave Oven
- 10 Gallon LP Gas/DSI/120V Water Heater
- 20" Panasonic® Stereo Rear Bedroom TV
- 27" Panasonic® Stereo Front Overhead TV
- TV Antenna
- 4 Head/Hi-Fi Panasonic® VCR
- Smoke Detector/Alarm
- LP Gas Detector/Alarm
- CO Detector/Alarm
- Fire Extinguisher

Body Structure

- Raised Stacked Rail Chassis
- Full Basement Storage
- One-Piece Fiberglass Roof

Electrical

- Dual (25M & 35M) BTU Furnaces
- Dual Roof A/C High Efficiency
- 160 Amp Alternator
- 50 Amp Power Cord Service
- 2,000 Watt Inverter/Converter
- 7.5 KW Onan® QD Diesel Generator
- Energy Management System

Exterior

- 10,000 lb. Trailer Hitch*
- Radius Roof with Flat Interior
- Double Entry Step with Power Step Cover
- One-Piece Hood with Easy Lift System
- Dual Glazed Windows
- Exterior Utility Compartment

- Exterior Paper Towel Holder & Soap Dispenser
- Exterior Assist Handle
- Full Length Interior Assist Handle
- Inverted Bus Style Mounted Exterior Mirrors
- Screen Entry Door with Easy Latch Access
- Clear Coat/Polish & Buff Exterior with Coordinating Awning Package** (8 Exterior Graphics Choices)
- 29" Entry Door with Keyless Entry
- Exterior Aluminum Rear Ladder
- Semi-Automatic Hydraulic Levelers

Exterior Automotive

- Cummins® 8.3 Litre, 350 hp ISC Diesel with Side Radiator
- Dual Fuel Fill
- Mud Flaps
- Radial Tires—275 R80 225
- Front Mask
- Intermittent Windshield Wipers
- Remote Heated Rear View Mirrors
- Aluminum Wheels (4)
- Roof Mounted Chrome Air Horns

Exterior Storage

- Lockable Luggage Doors

Interior

- Vinyl Ceiling
- Ducted Roof Air Package
- Solid Surface Double Galley Sink
- Single Handle Galley Faucet with Removable Sprayer Head
- Porcelain Toilet with Hand Spray
- Residential Drawer Guides with Drawer Lock
- Sliding Exterior Wardrobe Mirror Doors

- Pleated Day & Night Shades—Living & Bedroom Areas
 - 1" Mini Blind—Galley & Bath Windows
 - Residential Grade Carpeting—Living & Bedroom Areas
 - Diagonal Ceramic Tile Floor—Galley, Entry & Bath Areas
 - Solid Surface Galley & Lavy Tops
 - Solid Wood Cabinet Doors & Drawers
 - Hardwood Cabinetry with New Residential Hardware (Choice of Cherry, Maple or Walnut)
 - Slide-Out Room Awnings
 - Multiple Slide-Outs
 - Solid Surface Backsplash with Beveled Mirrors
 - Solid Surface Nightstand Tops
 - Solid Surface Linen Top
 - DSS KVH Dish and Receiver
 - Pneumatic Stepwell Cover
 - Home Theater System with DVD Player
 - Shower with Seat and Obscure Glass Door
 - Shoe Storage
- (Standard Furniture Offering is Ultraleather™ w/Inlay)

Interior Automotive

- 2-Din Dash Radio with AM/FM Stereo/CD
- Rear Vision Camera & Monitor Package
- European Style Automotive Dash
- Adjustable Dash Gauge Package with Column
- Smart Steering Wheel
- Passenger Drink Holder/Coin Tray
- Denso® Dash A/C System
- 2-Speed Overhead Dash Fans
- 3-Point Seat Belts
- Power Driver's Seat Pedestal

- Rain Sensor Power Vent
- Aluminum Rims
- Adjustable Pedals
- Back-Up Alarm
- Power Sun Visors (3)
- Manual Sun Shade—Driver Side

Options

- Optional Graphics (Eight Choices)
- Wider, Ultraleather™ Passenger Seat with Electrical Footrest
- Ultraleather™ J-Style Sofa
- Central Vacuum Cleaner
- Exterior Entertainment Package with TV
- Bedroom Overhead with Base Cabinet
- "In Motion" DSS System
- 54" Slide-Out Tray
- 36" Slide-Out Tray
- 90" Full Slide-Out Basement Tray
- Compact Disc Changer
- New! CB Ready
- GPS System (Integrated into the Sony® Back-Up Monitor)
- 3-Burner with Cook-Top & 22" Oven
- Facing Dinette
- Free Standing Dinette
- Washer/Dryer
- CSA—Freightliner
- Chrome Exterior Mirrors
- New! A/C with Heat Pump/Solar
- New! Rear Rock Guard

* The chassis manufacturer recommends the installation of a supplemental brake control system to activate the brakes on the vehicle or trailer you are towing.

** Includes Slide-Out Rooms, Entry Door, Patio and Windows. Patio Awning is Electric.

Specifications

Freightliner® Chassis	38 B	40 C	40D
Engine (ltrs.)	8.3L	8.3L	8.3L
Wheel Base	252"	266"	266"
GVWR (lbs.)(1)	31,000	31,000	31,000
Front GAWR (lbs.)(2)	12,000	12,000	12,000
Rear GAWR (lbs.)(2)	19,000	19,000	19,000
Base Weight (lbs.)(3)	26,200	26,700	27,850
GCWR (lbs.)(4)	41,000	41,000	41,000
Hitch Rating Weight (lbs.)*	10,000	10,000	10,000
Tongue Weight (lbs.)*	1,000	1,000	1,000
Fuel Capacity (gal.)	150	150	150
Overall Length(5)	38' 9"	39' 11"	39' 11"
Overall Height with A/C	12' 5"	12' 5"	12' 5"
Overall Width (max.)(6)	101"	101"	101"
Interior Height (max.)	79"	79"	79"
Interior Width (max.)	96"	96"	96"
Fresh Water Holding Tank	95 gal	95 gal	95 gal
Grey Water Holding Tank	60 gal	60 gal	60 gal
Black Water Holding Tank	40 gal	40 gal	40 gal
Appliance LP Gas Tank (WC)(7)	38 gal	50 gal	50 gal
Water Heater Tank	10 gal	10 gal	10 gal

Liquid Weight Reference: Water (gal.) = (8.3 lbs./3.8 kgs.)
 Fuel (gal.) = (7.1 lbs./3.2 kgs.)
 LP Gas (gal.) = (4.2 lbs./1.9 kgs.)

Metric Conversion: Multiply pounds x 0.453 to obtain kilograms
 Multiply gallons x 3.785 to obtain liters

1. GVWR (Gross Vehicle Weight Rating): Means the maximum permissible loaded weight of the motor home. The GVWR is equal to or greater than the sum of the unloaded vehicle weight plus the net carrying capacity.
2. GAWR (Gross Axle Weight Rating): Means the maximum permissible loaded weight a specific axle is designed to carry.
3. Base Weight: Means the estimated weight of the motor home without fuel, options, water, cargo or passengers.
4. GCWR (Gross Combined Weight Rating): Means the value specified by the motor home manufacturer as the maximum allowable loaded weight of this motor home with its towed vehicle. Towing and braking capacities may differ. Refer to Fleetwood and chassis manufacturer manuals for complete information.
5. Length taken from front bumper to rear bumper (excludes accessories).
6. Excludes safety equipment and awnings.
7. Tank Manufacturer's listed water capacity (WC). Actual LP Gas capacity is 80% of water listing as required by the safety code.

N/A: Not available for this model.

* The chassis manufacturer recommends the installation of a supplemental brake control system to activate the brakes on the vehicle or trailer you are towing.

REVOLUTION

RV OWNERCARE...

is a limited one-year/three-year or 15,000 mile warranty, whichever occurs first, and it is fully transferable for the first 12 months.

RV OWNERCARE is one of the RV industry's most comprehensive programs and includes systems, appliances, components, and construction, with no deductible and no service charge.

RV OWNERCARE coverage is provided from a company that will be around in the future to service your needs. See your nearest Fleetwood dealer for a full explanation of benefits and restrictions.

Club Fleetwood...

As a Fleetwood owner, you're eligible to become a member of our owners group, Club Fleetwood. It's a perfect way to meet other Fleetwood owners who love to travel to beautiful resorts and vacation spots all across America. Call (877) 577-2560 and join the fun!



What Drives You?

Maybe it's feeling like you're the only one on Earth. Perhaps it's the unique sense of closeness with the great outdoors. Or, it might be the joy that comes from spending quality time with family and friends.

Whatever the reason, we know that you have a strong drive to experience everything that comes with spending time on the road. And for more than 50 years, we've shared that passion with you.

Because we're RV enthusiasts ourselves, you can see our passion in the vehicles we design and build. Own a Fleetwood, and you'll feel like you're not just traveling, but embarking on an experience unlike any other.

Set your own course for adventure and get out there and explore the world around you. Once you do, you'll see what it is that drives us — it's you.



Your local Fleetwood dealer is:

www.fleetwoodrv.com Visit our website to find a dealer near you or learn more about other Fleetwood products. Or call 1-800-444-4905.



IMPORTANT—PLEASE READ: Product information, photography and illustrations included in this publication were as accurate as possible at the time of printing. For further product information and changes, please visit our website at www.fleetwoodrv.com or contact your local Fleetwood dealer. Prices, materials, design and specifications are subject to change without notice. All weights, fuel, liquid capacities and dimensions are approximate. Fleetwood has designed its recreational vehicles to provide a variety of uses for its customers. Each vehicle features optimal seating, sleeping, storage and fluid capacities. The user is responsible for selecting the proper combination of loads (i.e. occupants, equipment, fluids, cargo, etc.) to ensure that the vehicle's capacities are not exceeded.