

SOUTHWIND® 2012

FLEETWOOD RV | CLASS A GAS



Morning Fog

TOP FEATURES

- Full-Body Paint
- 22.5" Aluminum Wheels
- One-Piece Panoramic Windshield
- Corian® Countertops
- Glazed Hardwood Cabinet Doors
- Sony® Electronics
- Sony Blu-ray® Surround Sound System (Optional)
- 7' Interior Ceiling Height
- Halogen Lighting
- Soft-Touch Vinyl Ceiling



Antique Frost



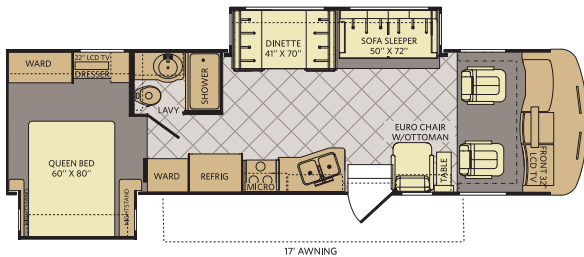
Sierra Stream



Vapor Mist

CHESTNUT RAVEN	CHOCOLATE BISQUE	CABINETRY
		WARM HONEY
		BROWN SUGAR

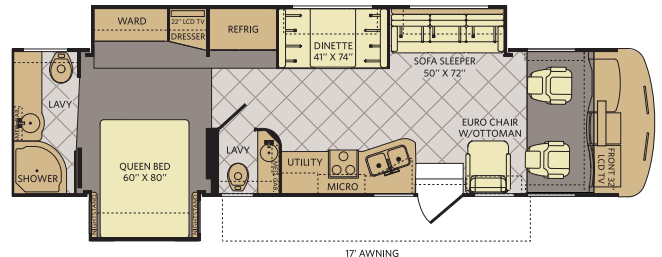
32VS



INTERIOR STORAGE CAPACITY: 144 CU. FT.
EXTERIOR STORAGE CAPACITY: 112 CU. FT.

Available options: 113, 192, 345, 490, 830, 833

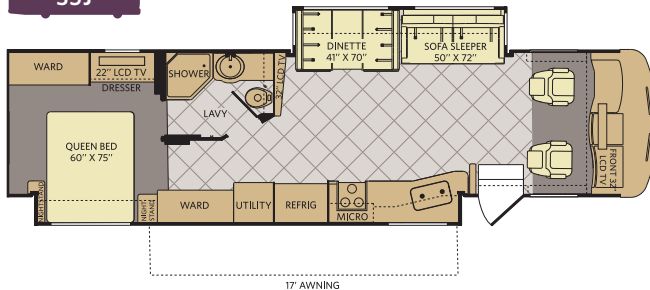
36D



INTERIOR STORAGE CAPACITY: 145 CU. FT.
EXTERIOR STORAGE CAPACITY: 105 CU. FT.

Available options: 113, 126, 192, 490, 830, 833

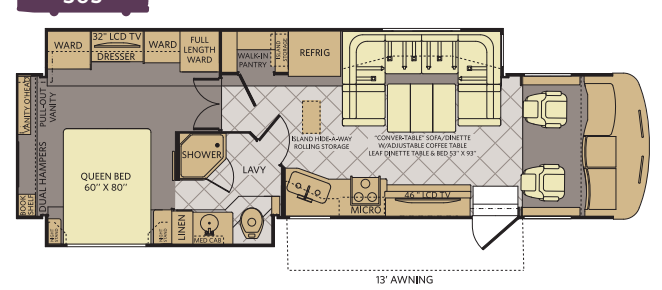
35J



INTERIOR STORAGE CAPACITY: 173 CU. FT.
EXTERIOR STORAGE CAPACITY: 87 CU. FT.

Available options: 113, 126, 192, 830, 833, 852, 866

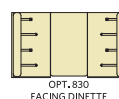
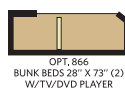
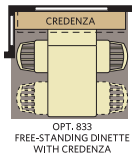
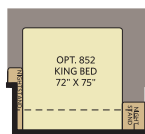
36S



INTERIOR STORAGE CAPACITY: 132 CU. FT.
EXTERIOR STORAGE CAPACITY: 100 CU. FT.

Available options: 093, 113, 126, 139, 852

OPTIONS



WEIGHTS & MEASUREMENTS

CHASSIS	FORD*			
MODELS	32VS	35J	36D	36S
Engine Displacement (liters)	6.8	6.8	6.8	6.8
Wheelbase (inches)	208"	228"	228"	228"
GVWR (lbs) ¹	22,000	22,000	22,000	22,000
Front GAWR (lbs) ²	8,000	8,000	8,000	8,000
Rear GAWR (lbs) ²	15,000	15,000	15,000	15,000
GCWR (lbs) ³	26,000	26,000	26,000	26,000
Hitch Rating Weight (lbs) ¹	5,000	5,000	5,000	5,000
Tongue Weight (lbs) ¹	500	500	500	500
Fuel Capacity (gal)	80	80	80	80

FORD CHASSIS

Model: Ford®
Engine: 6.8L Triton V10
Transmission: Ford®, 5-Speed, Automatic w/Overdrive

Alternator: 175 Amp
Torque: 457 lb-ft @ 3,250 RPM
Horsepower: 362HP

DIMENSIONS & CAPACITIES

MODELS	32VS	35J	36D	36S
Overall Length ⁴	33' 5"	36' 11"	36' 5"	36' 5"
Overall Height (with A/C)	12' 10"	12' 10"	12' 10"	12' 10"
Overall Width (maximum) ^{5, 6}	102"	102"	102"	102"
Interior Height (maximum)	84"	84"	84"	84"
Interior Width (maximum)	96"	96"	96"	96"
Fresh Water Holding Tank (gal)	80	85	80	80
Grey Water Holding Tank (gal)	58	58	58	58
Black Water Holding Tank (gal)	42	42	42	42
Appliance Propane Tank (gal) (WC) ⁷	25	25	25	25
Water Heater Tank (gal)	10	10	10	10

Liquid Weight Reference:

Water (gal) = (8.3 lbs/3.8 kgs) Fuel (gal) = (6.1 lbs/2.8 kgs) Propane (gal) = (4.2 lbs/1.9 kgs)

Metric Conversion:

Multiply pounds x 0.453 to obtain kilograms. Multiply gallons x 3.785 to obtain liters.
 Multiply liters x 61 to obtain cubic inches.

Disclaimers

- GVWR (Gross Vehicle Weight Rating) is the maximum permissible weight of this fully loaded motor home. The GVWR is equal to or greater than the sum of the (UVW) unloaded vehicle weight plus the (OCCC) occupant cargo-carrying capacity.*
- GAWR (Gross Axle Weight Rating) is the maximum permissible loaded weight a specific axle is designed to carry.
- GCWR (Gross Combined Weight Rating) is the value specified by the motor home manufacturer as the maximum allowable loaded weight of this motor home with its towed vehicle. Towing and braking capacities may be different. Refer to Fleetwood and chassis manufacturer's manuals for complete information.
- Length measured from front bumper to rear bumper (excludes accessories).
- Excludes safety equipment and awnings.
- Motor homes feature a body width over 96" which will restrict your access to certain roads. Before purchasing, you should research any state and/or province road laws which may affect your usage.
- Tank manufacturer's listed water capacity (WC). Actual propane capacity is 80% of water listing as required by the safety code.

† The chassis manufacturer recommends the installation of a supplemental brake control system to activate the brakes on the vehicle or trailer you are towing. Hitch receiver ratings expressed are maximum for the hitch receiver installed and may require the purchase of additional equipment that is dependent on the weight of the towed load. Consult with hitch receiver manufacturer for further information.

* UVW and OCCC are found on the label containing the federal certification tag in each RV.

RV OWNERCARE**

Limited one-year/15,000-mile coach warranty and three-year/45,000-mile structural warranty, whichever occurs first, and it is fully transferable for the first 12 months. RV OWNERCARE is one of the RV industry's most comprehensive programs and includes systems, appliances, components and construction, with no deductible and no service charge. RV OWNERCARE coverage is provided by a company that will be around in the future to service your needs. See your nearest Fleetwood RV dealer for a full explanation of benefits and restrictions.

CONTACT US

To locate a dealer near you, visit our website at www.fleetwoodrv.com or call 1-800-322-8216. We can also be contacted at Fleetwood RV Customer Relations, P.O. Box 1007, Decatur, IN 46733.

FLEETWOOD RV MOTOR HOME CLUBS

As a Fleetwood RV owner, you're invited to become a member of several Fleetwood RV motor home clubs. Becoming a club member is the perfect way to meet other Fleetwood owners who love to travel across America and share in the RV lifestyle. Visit our website at www.fleetwoodrv.com/owners_clubs to learn more and join the fun.

IMPORTANT—PLEASE READ

Product information, photography and illustrations included in this publication were as accurate as possible at the time of printing. For further product information and changes, please visit our website at www.fleetwoodrv.com or contact your local Fleetwood RV dealer. Prices, materials, design and specifications are subject to change without notice. All weights, fuel, liquid capacities and dimensions are approximate. Fleetwood RV has designed its recreational vehicles to provide a variety of uses for customers. Each vehicle features optimal seating, sleeping, storage and fluid capacities. The user is responsible for selecting the proper combination of loads (i.e., occupants, equipment, fluids, cargo, etc.) to ensure that the vehicle's capacities are not exceeded.



**All 2012 Fleetwood RV motor homes include a 1-year membership to Coach-Net. For complete info, see your Fleetwood RV dealer.

©2011 Fleetwood RV Inc. Printed in USA. Inventory Control Number SW12B1, 08/11. Model Year 2012, First Edition.

WHY FLEETWOOD RV?



Quality

There's no cutting corners. Skilled craftsmen build every Fleetwood RV for maximum durability and longevity.



Safety

You've got precious cargo. So we've engineered dozens of innovative safety features into our motor homes to give you more peace of mind.



Trust

More people trust Fleetwood RV. After all, we've spent over 60 years perfecting RVs, earning the loyalty of generations of RVers.



Service

Help is nearby with 24/7 emergency roadside assistance through Coach-Net®*. And when you need an upgrade or repair, you'll find Fleetwood RV dealers all across North America ready to assist you.



Passion

We're truly passionate about the RV lifestyle. Fleetwood RV was founded by RV enthusiasts, and that tradition continues today.



Warranty

Exclusive RV ownercare warranty. See your Fleetwood RV dealer for details.