

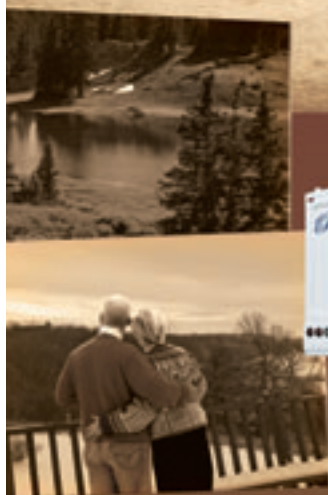
Regal

Regal™

Camp like the king of the mountain.



Fifth Wheels



Functional Comfort | Abundant Storage | Smart Details | Aluminum Frame | Residential Upgrades



The Pull-Out Baskets help you pack faster so you can head out sooner. Just fill them up in the house, and slide them back into place.



The Easy-Pull, Full Extension Drawer Guides pull out all the way, so you can take advantage of all the space.



The Free-Standing Dinette looks like your dining table at home, and with the pull-out extension you can seat five for dinner. It's fancy enough for your Thanksgiving feast!



The Dinette Chairs are not only comfortable, they're secret storage units! The seat lifts up for handy additional storage space.

Welcome home.
You may never want to go back.

Regal 365BHTS shown in Waterfall interior décor with Clear Oak wood finish.



The Living Room features residential upgrades that turn a RV into a home. Upscale features such as a cushy sofa and decorative lighting are standard. A glowing fireplace, washer/dryer, flat screen TV, and larger refrigerator are available too.



An All New Solid Surface Countertop with an integrated double-bowl sink designed for double duty, featuring separate bowls to wash and rinse your dishes. It also becomes additional counter space when you need it – simply put on the sink lid covers.



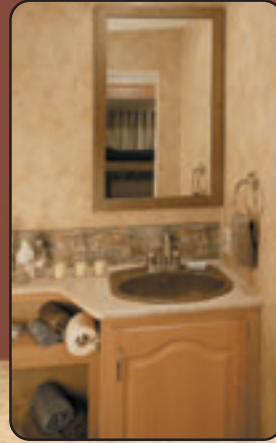
The Galley is loaded with smart details, because it's been designed by seasoned RVers. For example, the overhead cabinets are deep enough for full-size cookware. The galley is also equipped with notable name brands such as Dometic® and Magic Chef®.



The Guest Bedroom (select models), with a full-size bed and overhead bunk, gives overnight guests the same sleeping privacy that you enjoy in the master bedroom.



The Entertainment Center and Wardrobe holds not only your shirts, pants and socks, but a good size TV as well (TV not included).



The Guest Bathroom (available) means you don't need to share your personal space. Your guests enjoy their own sink and toilet.



The Shirtward holds a season's worth of clothing with a hanging rack and three big drawers.

Enjoy the royal treatment in Regal. The Regal lets you live like royalty wherever you are, with a spacious galley, large bathroom, and big refrigerator. In short, Regal is designed for functional comfort and long-term stays.



The Master Bedroom features a comfortable innerspring mattress. Queen-size is standard and king-size is available – how appropriate to find a queen or a king in a trailer named Regal!

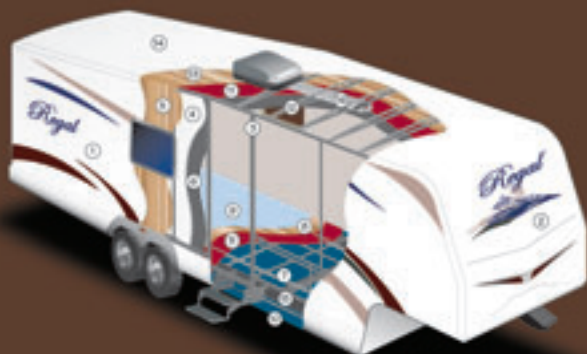


The Master Bathroom is spacious enough to hold a marble-finish shower and sink, porcelain toilet, medicine cabinet, and you – with room to spare. The solid door between the bed and bathroom provides privacy.



Our claim to fame: The Aluminum Frame.

To create a lightweight but strong skeleton, we use a welded aluminum frame on all four walls and the floor. Coupled with our lamination process, it provides superior sidewalls that are strong, corrosion resistant and lightweight.



Drawing is for illustrative purposes only to highlight aspects of Regal construction. Actual RV design depends on model and is subject to change.

- 1. HIGH GLOSS FIBERGLASS SIDING** - This durable and glossy surface is easy to clean, and adds beauty and structural integrity.
- 2. FIBERGLASS FRONT CAP** - Improved aerodynamics and styling.
- 3. 2" x 2" ALUMINUM SIDEWALL STUDS** - Keeps weight down while providing structural integrity to the sidewall.
- 4. SOLID BLOCK EPS (Expanded Polystyrene) INSULATION** - Provides strength and durability while helping to ensure interior comfort in every season.
- 5. WOOD SUBSTRATE** - Adds structural reinforcement to the exterior fiberglass siding.
- 6. INTERIOR WALL PANEL** - Features a durable, easy to clean, decorative finish.
- 7. 2" x 3" ALUMINUM FLOOR JOISTS** - Provides a lightweight floor construction without compromising strength while allowing for the placement of in-floor furnace ducting.
- 8. ENGINEERED 5/8" OSB FLOORING** - Provides the dependable decking needed to ensure an adequate foundation. Further stability is added by interlocking these sheets using tongue in groove construction.
- 9. ARMSTRONG® FLOORING** - From the best name in residential flooring.
- 10. FULLY ENCLOSED CHASSIS** - Provides a barrier from ground debris and allows for the holding tanks to be heated.
- 11. R7 FIBERGLASS INSULATION** - As in your home, helps to ensure interior comfort in every season.
- 12. ENGINEERED RADIUSED STEEL CEILING TRUSS** - Ensures strength, water runoff and reduced weight from wood structures.
- 13. ENGINEERED OSB ROOF SUBSTRATE** - Is designed to maximize strength, is sealed to ensure moisture resistance and provides a solid backbone for the synthetic rubber roof construction.
- 14. ONE-PIECE SEAMLESS SYNTHETIC RUBBER ROOF MEMBRANE** - Provides the ideal weather seal and is warranted for 12 years.
- 15. REINFORCED CAMBERED STEEL CHASSIS** - Provides optimal strength, durability, and towing performance.
- 16. DUCTED IN-CEILING AIR CONDITIONING** - Efficiently distributes cool air.

Interior décor

	ESTATE			GOLDENROD			WATERFALL			
Living Room										
Bedroom										
	A Sofa Bed & Swivel Recliner B Dinette Chairs & Throw Pillow C Ultraleather™ (Available Sofa & Recliner) D Bedspread & Headboard E Throw Pillow & Pillow Shams		A Sofa Bed B Dinette Chairs & Swivel Recliner C Ultraleather™ (Available Sofa & Recliner) D Bedspread & Headboard E Throw Pillow & Pillow Shams		A Sofa Bed B Dinette Chairs & Swivel Recliner C Ultraleather™ (Available Sofa & Recliner) D Bedspread & Headboard E Throw Pillow & Pillow Shams				A Sofa Bed B Dinette Chairs & Swivel Recliner C Ultraleather™ (Available Sofa & Recliner) D Bedspread & Headboard E Throw Pillow & Pillow Shams	Clear Oak Anderson Walnut

Regal Fifth Wheel Floor Plans

Personal space included, standard.

No matter how many in your family, you'll find the floor plan that gives everybody enough space. The Regal comes in sizes from 30 to 39 feet, with two to four slide-outs for added living area. Along with this bigger space comes larger appliances, superior construction materials and outstanding workmanship. So go ahead, pick your favorite floor plan.

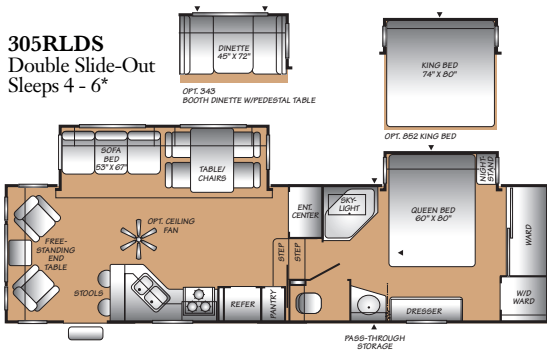


A Fully Enclosed Chassis is available. No need to migrate to warmer climates. The enclosed chassis allows heating the holding tanks to help prevent freezing in colder weather.

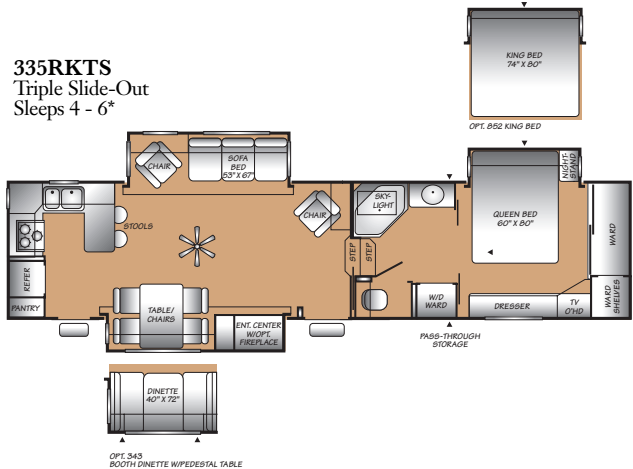


Pass-Through Storage is the place to keep large items like camp chairs and tables. And you can get them out from either side.

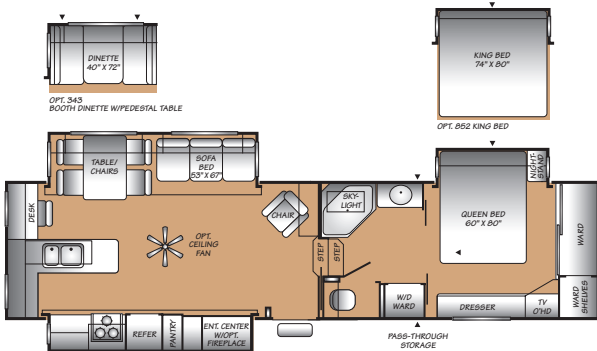
305RLDS
Double Slide-Out
Sleeps 4 - 6*



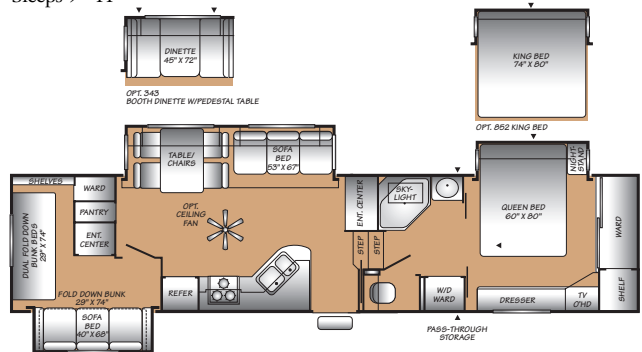
335RKTS
Triple Slide-Out
Sleeps 4 - 6*



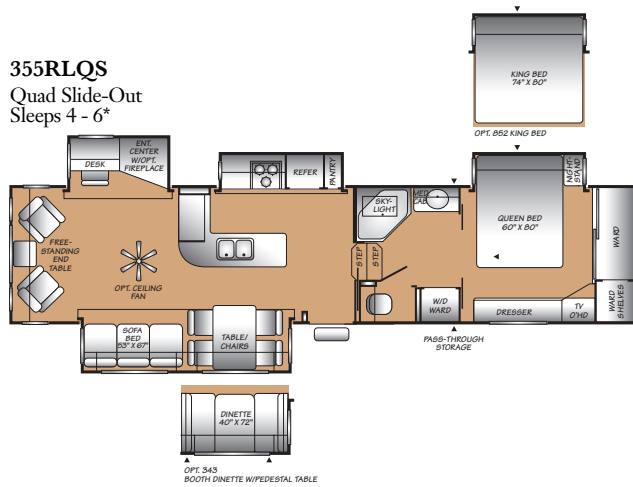
325RKTS
Triple Slide-Out
Sleeps 4 - 6*



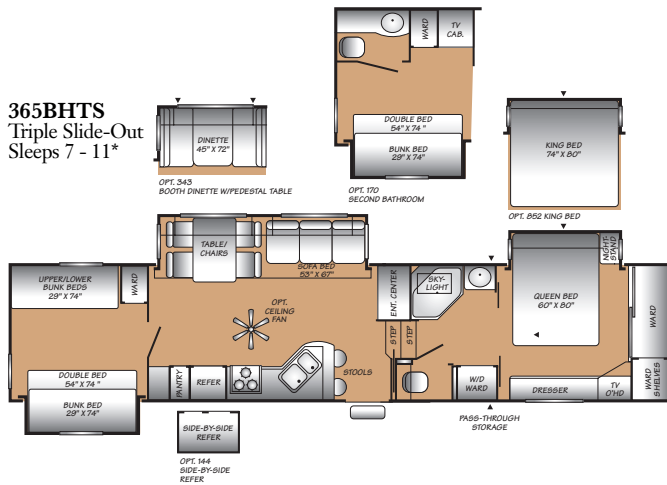
345BHTS
Triple Slide-Out
Sleeps 9 - 11*



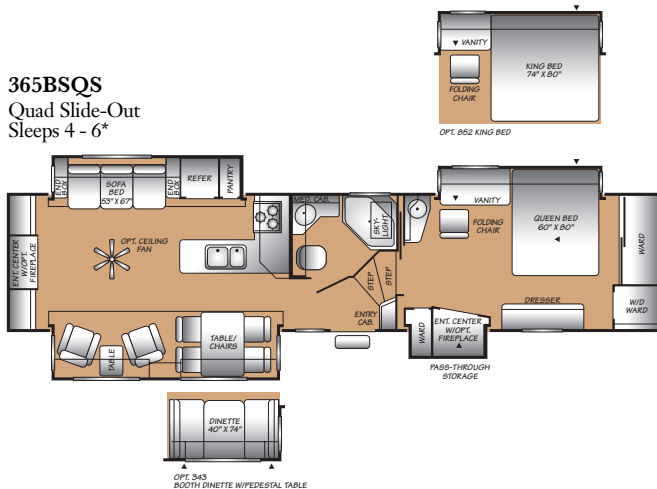
355RLQS Quad Slide-Out Sleeps 4 - 6*



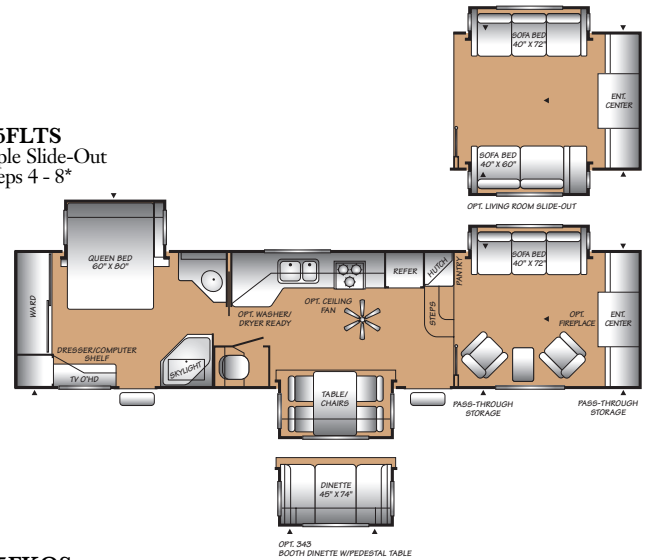
365BHTS Triple Slide-Out Sleeps 7 - 11*



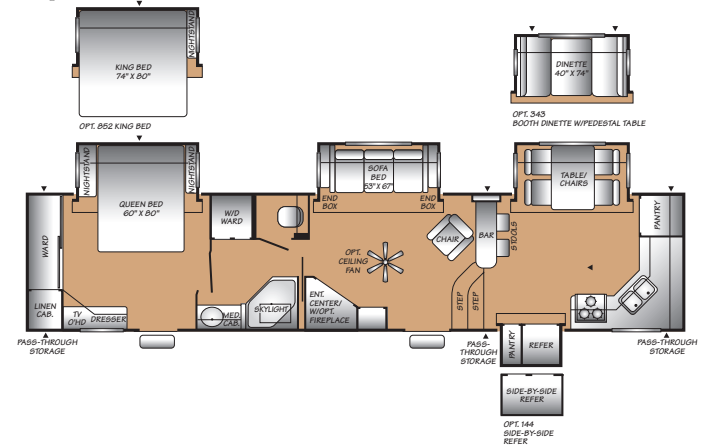
365BSQS Quad Slide-Out Sleeps 4 - 6*



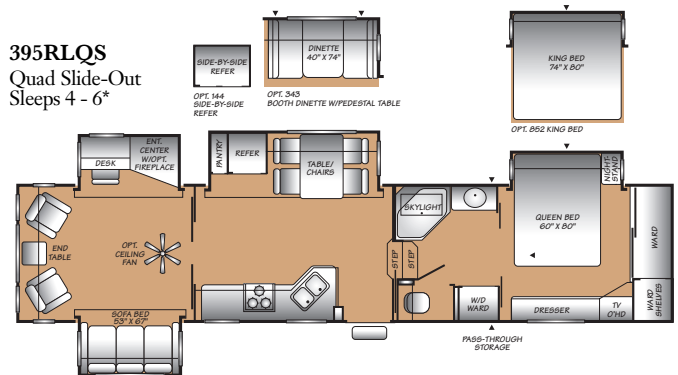
365FLTS Triple Slide-Out Sleeps 4 - 8*



385FKQS Quad Slide-Out Sleeps 4 - 6*



395RLQS Quad Slide-Out Sleeps 4 - 6*



= Exterior storage

*Sleeping capacity is a variable number and is affected by items such as size of occupant, options and floor plan. Some models are not available in all areas of the country. Please see your local dealer for model availability.

REGAL WEIGHTS AND MEASUREMENTS

MODELS	305RLDS	325RKTS	335RKTS	345BHTS	355RLQS	365BHTS	365BSQS	365FLTS	385FKQS	395RLQS
WEIGHTS										
GVWR (lbs) ¹	11,800	13,500	13,800	13,800	14,300	14,400	14,300	13,800	14,700	15,200
Gross Dry Weight (lbs) ^{2, 6}	8,995	10,685	11,000*	11,078	11,300*	11,138	11,500*	10,272	11,800*	12,700*
Cargo Carrying Capacity (lbs) ^{3, 6}	2,805	2,815	2,800*	2,722	3,000*	3,262	2,800*	3,528	2,900*	2,500*
Hitch Dry Weight (lbs) ^{2, 6, 8}	1,793	2,047	2,000*	2,335	2,300*	1,927	2,200*	1,645	2,450*	2,200*
DIMENSIONS & CAPACITIES										
Length (Feet & Inches) ^{4, 6}	32' 11"	35' 11"	37' 8"	37' 11"	37' 8"	39' 10"	38' 3"	37' 9"	39' 10"	39' 7"
Height (Feet & Inches) ^{5, 6}	12' 6"	12' 6"	12' 6"	12' 6"	12' 6"	12' 6"	12' 6"	12' 6"	12' 6"	12' 6"
Fresh Water Holding Tank (gal) ^{6, 7}	65	65	65	65	65	65	65	65	65	65
Grey Water Holding Tank (gal) ^{6, 7}	80	80	80	80	80	80	80	80	80	80
Black Water Holding Tank (gal) ^{6, 7}	40	40	40	40	40	40	40	40	40	40
Propane Capacity (lbs) ^{6, 7}	60	60	60	60	60	60	60	60	60	60
Tire Size (Load Range)	ST235/ 80R16(D)	ST235/ 80R16(D)	ST235/ 80R16(D)	ST235/ 80R16(D)	ST235/ 80R16(D)	LT235/ 85R16(G)	ST235/ 80R16(D)	ST235/ 80R16(D)	LT235/ 85R16(G)	LT235/ 85R16(G)

REGAL FEATURES

INTERIOR

- Atwood XT H20T® 10-Gallon LP/120V DSI Water Heater w/Bypass
- Atwood® Excalibur XT™ 2-Stage DSI Furnace w/ Digital Thermostat
- Cable TV Hook-Up
- Roller Bearing, Full Extension Drawer Guides
- Cathedral-Arched Overhead and Base Cabinet Doors

LIVING ROOM

- Swivel Reading Lights
- Deluxe Flexsteel® Furniture Styling

GALLEY

- 8 cu. ft. Dometic® Double Door Propane/110V Electric Refrigerator
- Magic Chef® 3-Burner (1 High-Output), 22" Range w/Oven and Cover
- 12V Fluorescent Lighting
- Sink Covers
- Removable Galley Baskets
- Single Lever Faucet w/Pull-out Sprayer
- Pots & Pans Drawer
- Spice Rack
- Tip-Out Sponge Tray (Select Models)
- Lazy Susan (Most Models)
- Water Purifier

BEDROOM

- 6' 6" Bedroom Ceiling Height
- Cedar Lined Wardrobe
- Clothes Hamper
- Lift-Up Bed Platform w/Below Bed Storage (Most Models)
- Pillow Shams
- Sliding Underbed Storage Box (Select Models)
- Innerspring Mattress

BATHROOM

- 12V Power Exhaust Vent
- 3-Bulb Lavy Vanity Light
- Bathroom Skylight

- Glass Shower Enclosure
- Medicine Cabinet w/Mirrored Door
- Removable Wire Basket (Most Models)

SAFETY/CONVENIENCE

- Carbon Monoxide Detector/Alarm
- Fire Extinguisher
- Propane Detector/Alarm
- Smoke Detector/Alarm
- Systems Monitor Panel

EXTERIOR

- 120V Patio Receptacle
- Attic Vents
- Dual 30 lb. Split Tank Propane Cylinders w/ Regulator & Auto-Changeover
- Extended Pin Box & Power Landing
- Gear w/Snap Jack Pins
- Hitch Light
- Mid-Coach Turn Signals
- Rear Center Brake Light
- Phone & Satellite Jacks
- Outside Security Lighting
- SAFETY/CONVENIENCE
- 120V GFI Circuit Protection
- 4-Wheel Electric Brakes
- Entry Step Light
- Roadside Utility Light

OPTIONS

- Half-Time Convection OTR Microwave
- Dual Pane Windows
- Laminate Wood Flooring
- Booth Dinette
- Ultraleather™ Furniture
- Spare Tire and Carrier
- 2nd 13,500 BTU A/C
- Generator Ready
- 10 Cu. Ft. Double Door Refrigerator
- 12 Cu. Ft. Side-By-Side Refrigerator (Select Models)
- 80" Long King Bed (Most Models)
- Washer/Dryer Ready

- Slide Room Awnings
- Comfort-Air® Power Roof Vent
- Ceiling Fan
- Fireplace (Most models)
- Central Vacuum
- Safe Box
- Anderson Walnut Interior

INTERIOR VALUE PACKAGE

- 15,000 BTU A/C
- Day/Night Shades
- AM/FM DVD/CD Home Theater System W/Surround Sound
- 27" Flat Screen TV
- Residential Style Solid Composite Galley Countertop w/Integrated Double Bowl Sink
- Free Standing Table w/Storage and Extension
- Free Standing Chairs w/Storage
- OTR Microwave w/Electronic Touch Pad
- 80" Long Queen Bed
- Porcelain Foot Pedal Toilet
- Marble Look Shower and Surround w/ Shower Massage and Soap Dish
- Marble Look Lavy Sink W/High Arch Faucet

EXTERIOR VALUE PACKAGE

- Fully Enclosed Chassis w/Heated Holding Tanks
- Chrome Wheels
- Laminated High Gloss Fiberglass Exterior
- Exterior Shower
- Fiberglass Front and Rear Cap
- Patio Awning
- 50-Amp Service W/Detachable Power Cord
- TV Antenna
- Deep Tinted Safety Glass Windows
- Roof Ladder
- Large Lend-A-Hand Assist Handle
- Black Tank Flush
- Stabilizer Jacks
- Shock Absorbers

1. GVWR (Gross Vehicle Weight Rating) is the maximum permissible weight of this trailer when fully loaded. It includes all weight at the trailer axle(s) and tongue or pin.

2. All dry weights are based on the standard model and do not include optional features or equipment.

3. Cargo Carrying Capacity is determined by subtracting Gross Dry Weight from GVWR. Cargo Carrying Capacity includes all fluids, optional features, equipment, and personal cargo.

4. Length taken from hitch or pin box to rear bumper (excludes accessories). Trailer length includes hitch; fifth wheel includes standard pin box.

5. Actual height may be lower, based on option offerings. Consult with your dealer to obtain actual height for the unit you are interested in.

6. Approximate.

7. Water weight equals 8.3 lbs. per gallon. Propane weight equals 4.2 lbs per gallon.

8. Hitch weights are dependent upon how the trailer is equipped with options, on-board cargo and tank fluid levels. Actual hitch weights may be higher or lower than shown. It is recommended that the tow vehicle and hitch for your trailer have sufficient capacity to accommodate actual usage.

N/A = Not available at the time of printing.

* = Estimated weights.

IMPORTANT—PLEASE READ

Product information, photography and illustrations included in this publication were as accurate as possible at the time of printing. For further product information and changes, please visit our website at www.fleetwoodrv.com or contact your local Fleetwood dealer. Prices, materials, design and specifications are subject to change without notice. All weights, fuel, liquid capacities and dimensions are approximate. Fleetwood has designed its recreational vehicles to provide a variety of uses for customers. Each vehicle features optimal seating, sleeping, storage and fluid capacities. The user is responsible for selecting the proper combination of loads (i.e.: equipment, fluids, cargo, etc.) to ensure that the vehicle's capacities are not exceeded.

S = Standard O = Optional

WHY REGAL?



PASSION

We're truly passionate about the RV lifestyle. Fleetwood was founded by RV enthusiasts, and that tradition continues today.



QUALITY

There's no cutting corners. Skilled craftsmen build every Fleetwood RV for maximum durability and longevity.



SERVICE

Help is nearby. When you need an upgrade or repair, you'll find facilities all across North America and more than 1,100 dealers ready to assist you.



WARRANTY

Exclusive RV Ownercare warranty. See your Fleetwood dealer for details.



TRUST

More people trust Fleetwood. After all, we've spent over 50 years perfecting RVs, earning the loyalty of generations of RVers.

CONTACT US

To locate a dealer near you, visit our website at www.fleetwoodrv.com or call 1-800-444-4905. We can also be contacted at Fleetwood Customer Relations, P.O. Box 1007, Decatur, IN 46733.

FLEETWOOD TRAVELCADE CLUB

As a Fleetwood owner, you're eligible to become a member of the Fleetwood Travelcade Club. It's a perfect way to meet other Fleetwood owners who love to travel across America and share in the RV lifestyle. Call (877) 577-2560 or visit our website at www.fleetwoodrv.com/owners_clubs to learn more and join the fun!

RV OWNERCARE*

See your local dealer for complete details.

IMPORTANT—PLEASE READ

Product information, photography and illustrations included in this publication were as accurate as possible at the time of printing. For further product information and changes, please visit our website at www.fleetwoodrv.com or contact your local Fleetwood dealer. Prices, materials, design and specifications are subject to change without notice. All weights, fuel, liquid capacities and dimensions are approximate. Fleetwood has designed its recreational vehicles to provide a variety of uses for customers. Each vehicle features optimal seating, sleeping, storage and fluid capacities. The user is responsible for selecting the proper combination of loads (i.e.: equipment, fluids, cargo, etc.) to ensure that the vehicle's capacities are not exceeded.

TO OUR CUSTOMERS...

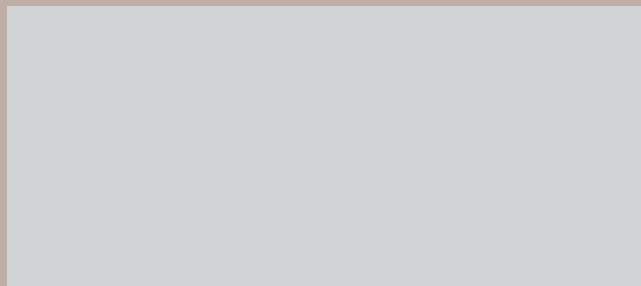
To make sure that you get the maximum satisfaction out of your recreational vehicle purchase, there are several things you should know:

1. Learn all you can about the travel trailer or fifth wheel you're planning to buy. Don't rely on word of mouth. Get the facts about the actual trailer length, width, unloaded weight with options, Gross Vehicle Weight Rating, and Cargo Carrying Capacity. These are usually available in the manufacturer's sales literature or from the Cargo Carrying Capacity Label located in each trailer. Be sure to check this information **before** you decide which unit to buy.
2. Verify the towing capacity of your tow vehicle. If you don't know, or aren't sure, you can ask at your automotive dealership. Be sure to match its tow rating to the loaded (not dry) weight of your trailer. Include the weight of water, additional accessories, clothing, food, and gear. To help Fleetwood travel trailer customers estimate this total weight, our Gross Vehicle Weight Ratings reflect the maximum weight of the trailer when fully loaded for camping. Be sure the weight of the tow vehicle plus the weight of your trailer do not exceed the Gross Combined Weight Rating of the tow vehicle.

Taking these simple steps before you buy will help ensure that your trailer and tow vehicle combination is just what you wanted.

See you on the trail!

Your Local Fleetwood Dealer Is:



treadlightly!®
LEAVING A GOOD IMPRESSION



FLEETWOOD
Travel Trailer Division

*For complete info see your Fleetwood dealer.
©2006. Fleetwood Enterprises, Inc. Printed in the U.S.A.
Model Year 2007, 2nd Edition RE07B2, 11/06.